



1. Beachwood Church
(structure #22a)
2. Boxley Valley, Buffalo National River,
Newton County, Arkansas
3. Craig Frazier, NPS/DSC
4. July, 1983
5. NPS/DSC
6. view from southeast
7. BV#13



1. Old Boxley Water Mill, 1870, NR-1974
(structure #11a)
2. Boxley Valley, Buffalo National River,
Newton County, Arkansas
3. Craig Frazier, NPS/DSC
4. October, 1983
5. NPS/DSC
6. view from west
7. BV#15



1. Bell hay barn
(structure #26b)
2. Boxley Valley, Buffalo National River,
Newton County, Arkansas
3. Craig Frazier, NPS/DSC
4. June, 1983
5. NPS/DSC
6. view from southwest
7. BV#16



1. Former John Edgmon, now Luallen, House
(structure #02a)
2. Boxley Valley, Buffalo National River,
Newton County, Arkansas
3. Craig Frazier, NPS/DSC
4. October, 1983
5. NPS/DSC
6. view from northeast
7. BV#17



1. Bell Second House
(structure #26i)
2. Boxley Valley, Buffalo National River,
Newton County, Arkansas
3. Craig Frazier, NPS/DSC
4. July, 1983
5. NPS/DSC
6. view from southwest
7. BV#18



1. Bell Swing Bridge
(structure #26j)
2. Boxley Valley, Buffalo National River,
Newton County, Arkansas
3. Craig Frazier, NPS/DSC
4. June, 1983
5. NPS/DSC
6. view from west
7. BV#19



1. Casey Store/cafe/residence
(structure #08b)
2. Boxley Valley, Buffalo National River,
Newton County, Arkansas
3. Craig Frazier, NPS/DSC
4. October, 1983
5. NPS/DSC
6. view from southwest
7. BV#20



1. Casey Saw Mill
(structure #08e)
2. Boxley Valley, Buffalo National River,
Newton County, Arkansas
3. Craig Frazier, NPS/DSC
4. July, 1983
5. NPS/DSC
6. View from west
7. BV#21



1. Former Marion Edgmon, now Bill Fowler
House, 1895
(structure #04a)
2. Boxley Valley, Buffalo National River,
Newton County, Arkansas
3. Craig Frazier, NPS/DSC
4. October, 1983
5. NPS/DSC
6. View from northwest
7. BV#22



1. Orphea Duty House, 1873
(structure #10a)
2. Boxley Valley, Buffalo National River,
Newton County, Arkansas
3. Craig Frazier, NPS/DSC
4. October, 1983
5. NPS/DSC
6. view from northeast
7. BV#23



1. Edgmon-Fowler Farm
(farmsite #3)
2. Boxley Valley, Buffalo National River,
Newton County, Arkansas
3. Craig Frazier, NPS/DSC
4. October, 1983
5. NPS/DSC
6. View from Northeast
7. BV#24



1. Villines Old Store
(structure #18b)
2. Boxley Valley, Buffalo National River,
Newton County, Arkansas
3. Craig Frazier, NPS/DSC
4. June, 1983
5. NPS/DSC
6. View from west
7. BV#25



1. Wooden Hardware on Edgmon Barn Door
(Structure #01c)
2. Boxley Valley, Buffalo National River,
Newton County, Arkansas
3. Craig Frazier, NPS/DSC
4. June, 1983
5. NPS/DSC
6. Exterior Detail
7. BV#27



1. Villines Hay Barn
(structure 20g)
2. Boxley Valley, Buffalo National
River, Newton County, Arkansas
3. Criag Frazier, NPS/DSC
4. October, 1983
5. NPS/DSC
6. View from S.W. of post-traditional
(category 4) **steel clad barn.**
7. **BV** #33



1. Boxley Valley Landscape
- 2/ Boxley Valley, Buffalo National River, Newton
County, Arkansas
3. Ric Alsech
4. Summer, 1984
5. NPS/DSC
6. view to west
7. BV #34



1. Boxley Valley, State Highway 43
2. Boxley Valley, Buffalo National River, Newton County, Arkansas
3. Ric Alesch
4. Summer, 1984
5. NPS/DSC
6. view to south
7. BV #36



1. Boxley Valley landscape
2. Boxley Valley, Buffalo National River, Newton
County, Arkansas
3. Ric Alesch
4. Summer, 1984
5. NPS/DSC
6. view to east
7. BV #37



1. Boxley Valley Landscape
2. Boxley Valley, Buffalo National River, Newton
County, Arkansas
3. Ric Alesch
4. Summer, 1984
5. NPS/DSC
6. view to east
7. BV #38



1. Boxley Valley landscape
2. Boxley Valley, Buffalo National River, Newton
County, Arkansas
3. Ric Alesch
4. Summer, 1984
5. NPS/DSC
6. view to west
7. BV #40



1. Boxley Valley landscape
2. Boxley Valley, Buffalo National River,
Newton County, Arkansas
3. Ric Alesch
4. Summer, 1984
5. NPS/DSC
6. View to west
7. BV #41



1. Boxley Valley landscape
2. Boxley Valley, Buffalo National River, Newton
County, Arkansas
3. Ric Alesch
4. Summer, 1984
5. NPS/DSC
6. view to west
7. BV #42



1. Buffalo River
2. Boxley Valley, Buffalo National River, Newton
County, Arkansas
3. Ric Alesch
4. summer, 1984
5. NPS/DSC
6. view to north
7. BV #43



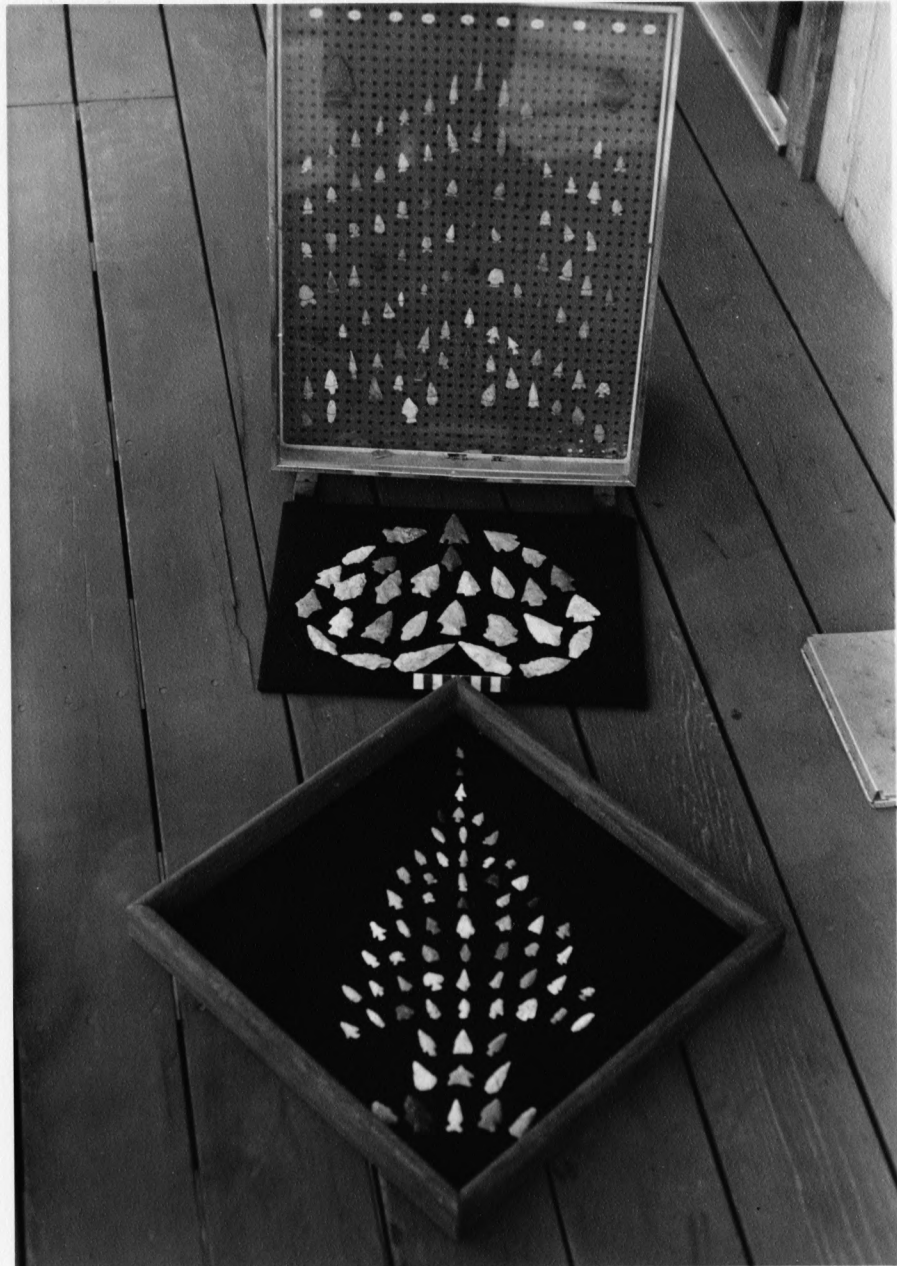
Buffalo National River, Boxley District
Arkansas

Dola Berg

negative at Buffalo NR, Harrison, Arkansas

Bluff shelter

Cob Cave, 3NW 6



Buffalo National River, Boyley District
Arkansas

Tim Klinger, 1988

Negatives at Buffalo NR, Harrison, Ar
Artifact collection of Bill Clark
3NW 611, Casey-Clark Site



Buffalo National River, Bouley District
Arkansas

Dola Berg

negative at Buffalo NR, Harrison, Ar
open field site

3NW 460, Doy Scroggins



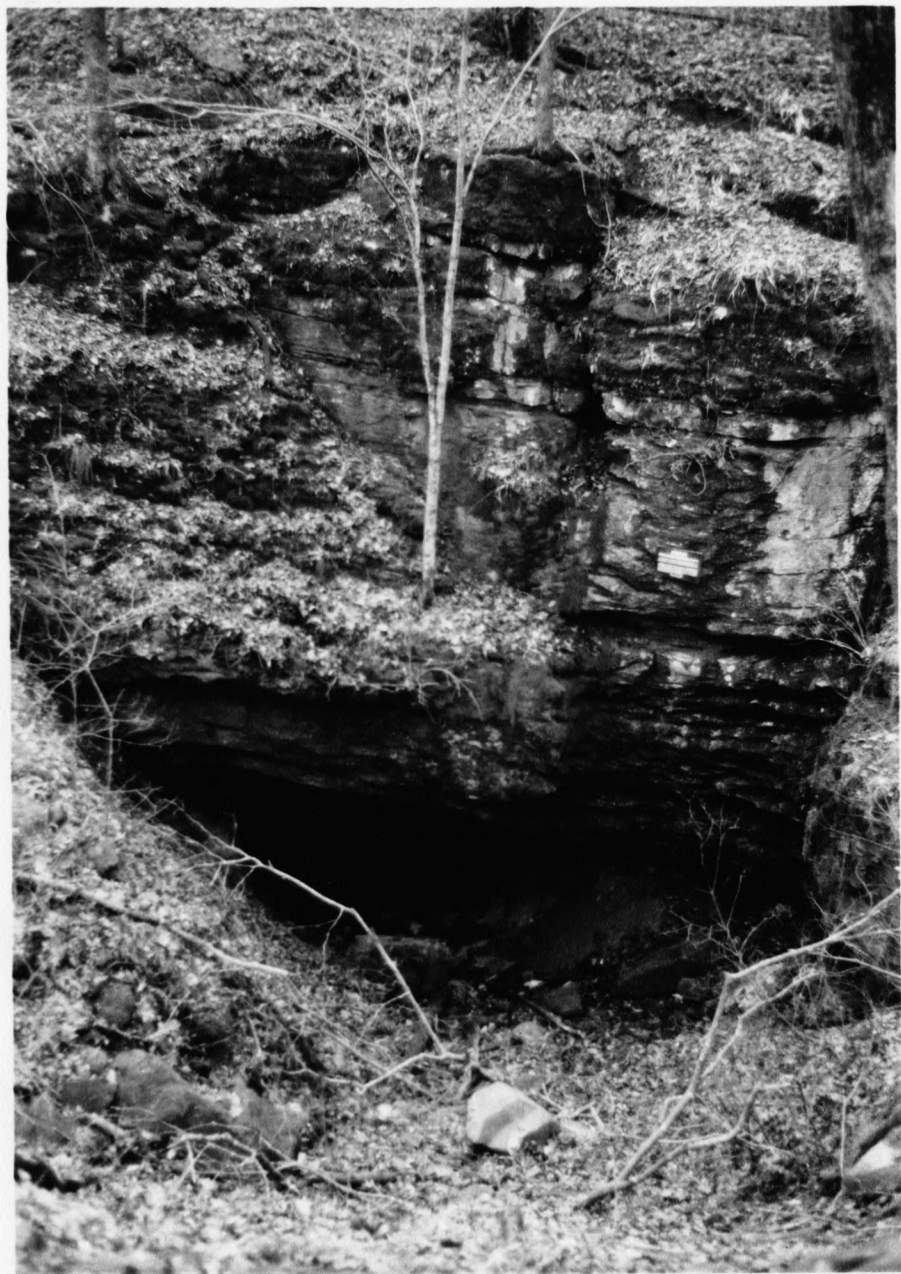
Buffalo National River, Boxley District
Arkansas

Roger Coleman, 1986

negative at Buffalo NR, Harrison, Ar

artifact collection of
3NW611, Casey Clark

Walter Williams
Site and general Boxley area



Buffalo National River, Boxley District
Arkansas

Myra Dec

negative at Buffalo NB, Harrison, Ar
Cave

3NW 431, Cave Mt Cave



Buffalo National River, Boxley District

Arkansas

Dola Berg

negative at Buffalo NR, Harrison, Arkansas

ferrace old site

3NW 182, Ponca Ford Bottom



Buffalo National River, Bouley District
Arkansas

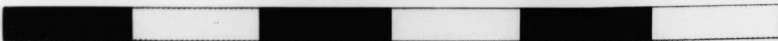
Roger Coleman, 1986

negative at Buffalo NR, Harrison, Ar
open terrace

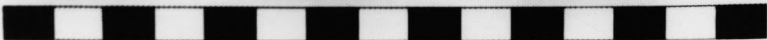
3NW 611, Casey Clark



INCH



CM

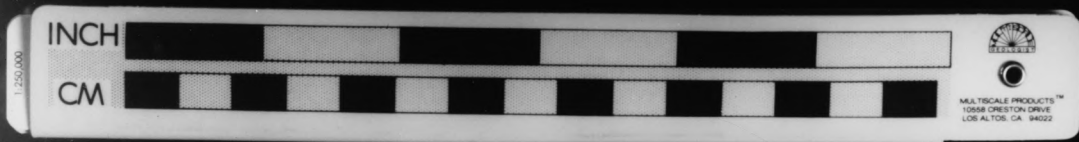


MULTISCALE PRODUCTS™
10588 CRENSHAW DRIVE
LOS ALTOS, CA 94022

Buffalo National River, Boxley District
Arkansas

Carol Spears, 1988

Negative at SPEARS, West Fork, Arkansas
Gary Projectile Points (Late Archaic)
3NW 662, Luallen Site



Buffalo National River, Boxley District
Arkansas

Carol Spears, 1988

negative at SPEARS, West Fork, Arkansas
projectile points

a-b lancelet

c stone square stemmed

d+e big sandy

f. side notched

3NW 663, Sattler Site



Buffalo National River, Boxley District
Arkansas

Carol Spears, 1988

negative at SPEARS, West Fork, Arkansas

upper terrace facing east

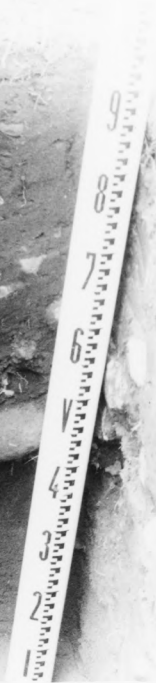
3NW 663, Sattler Site

3 NW 662

TU-L-6

SOUTH WALL

6-16-88



Buffalo National River, Boxley District
Arkansas

Carol Spears, 1988

negative at SPEARS, West Fork, Arkansas

Cultural midden in South wall of Tu 6

3NW 462, Luallen Site



Buffalo National River, Boxley District
Arkansas

Carol Spears, 1988
negative at SPEARS

Upper terrace facing west
West Fork, Arkansas

3NW 663, Sattler Site

3 NW 663
FEATURES
1 & 2
5-17-86



Buffalo National River, Boxley Dist.
Arkansas

Carol Spears, 1988

negative at SPEARS, West Fork, Ar
facing east, Features 1+2

prehistoric pits - Middle Archaic

Feature 1 4420-4925 BC
(corrected C₁₄)

Feature 2 4740-5240 BC
(corrected C₁₄)

3NW 663, Sattler Site