



Clendenin-1894

1894

MAIN STREET - 1984 PHOTOGRAPH

Buildings located on right side on Main St. are still standing to this day. #1-~~4~~, ~~6-7~~, #8.

Left side corner - Dalton Bldg. not built quite yet.

Streets were not paved, just wagons and oxen.

Opposite corner on same block from where the Dalton Bldg. will be built, is the Senator SIDNEY H. ROBERTSON House #31 was built then moved in 1923 to ELK AVENUE, BEHIND WHERE YOU SEE IT LOCATED NOW, TO MAKE WAY FOR THE CLENDENIN STATE BANK.

CLENDENIN HISTORIC DISTRICT, CLENDENIN, WV
KANAWHA CO.

PHOTO 1 of 14



Excluding movie theatre, these are 1894 buildings, on main St.

#1 - DARVEYS BLDG.

#2 - ORE'S VIDEO STORE

#3 - OLD JACKSON GROCERY STORE

#4 - LYNCH FLORAL CENTER / JACKSON HARDWARE

#5 - JOE'S LAUNDRY / OLD MOVIE THEATRE

CLENDENIN HISTORIC DISTRICT, CLENDENIN, WV
KANAWHA CO.

PHOTO 2 of 14



READER.

J.M. THIBET & SONS, SHOE MERCHANTS

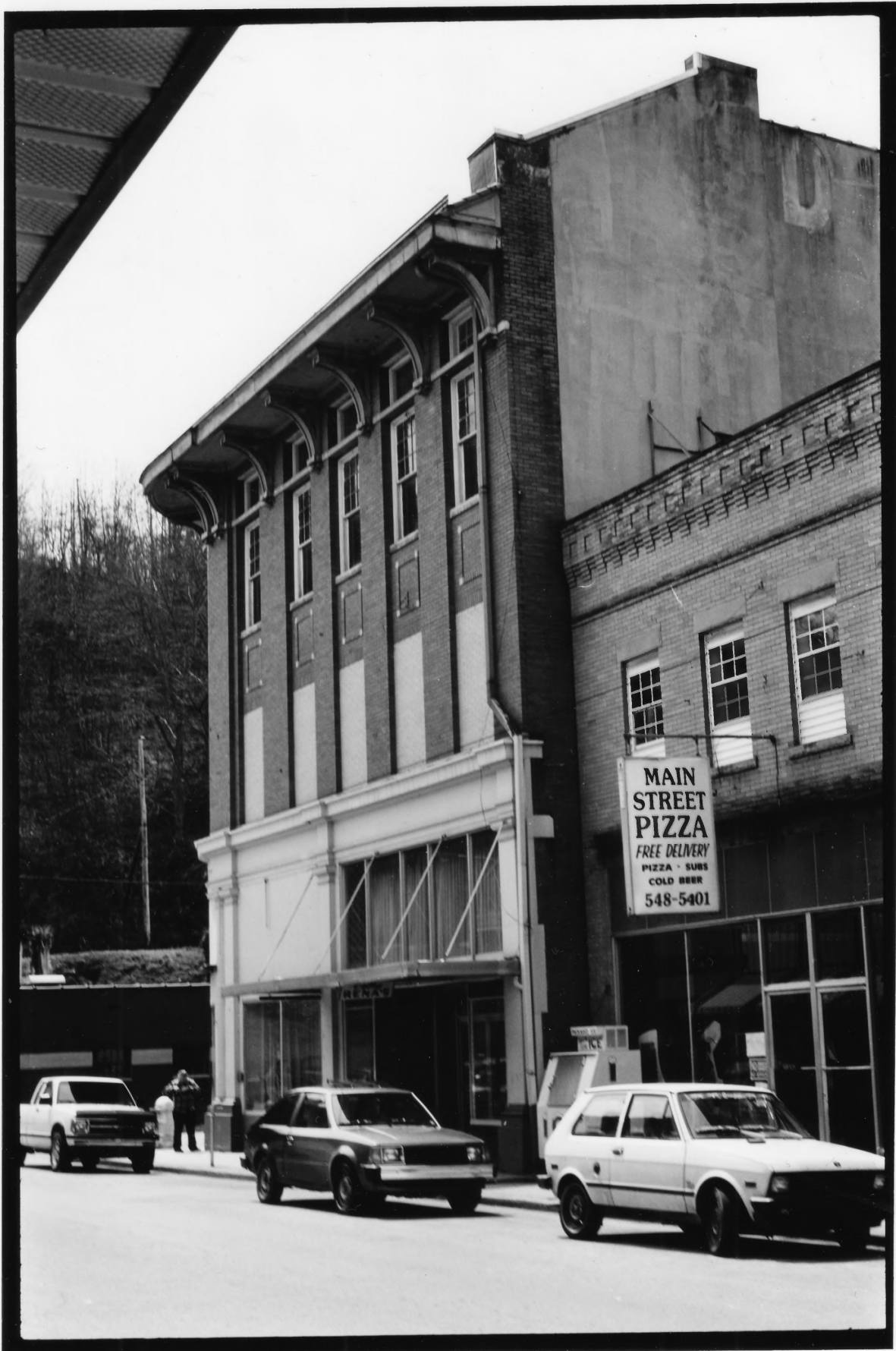
DURNO
SHOES

ENTIRE
FAMILY FROM
HEAD TO FOOT
Thibet & Sons

MEAT MARKET

#16, Dalton Building completed, 1914.

GLENDENIN HISTORIC DISTRICT, CLENDENIN, WV
KANAWHA CO.
Photo 3 of 14



#16. Dalton Building c. 1915

CLENDENIN HISTORIC DISTRICT, CLENDENIN, WV
KANAWHA CO.

PHOTO 4 of 14



Dalton
#16. Building - ground-breaking
ceremony

CLENDENIN HISTORIC DISTRICT, CLENDENIN, WV
KANAWHA CO -

PHOTO 5 of 14



Corner Maywood & Main Street.

#16 Dalton Bldg.

#17 Melton State Farm

#18 Apt. Building/Store

#19 Eugends Used Furniture Store

#20 Liza's Food Market

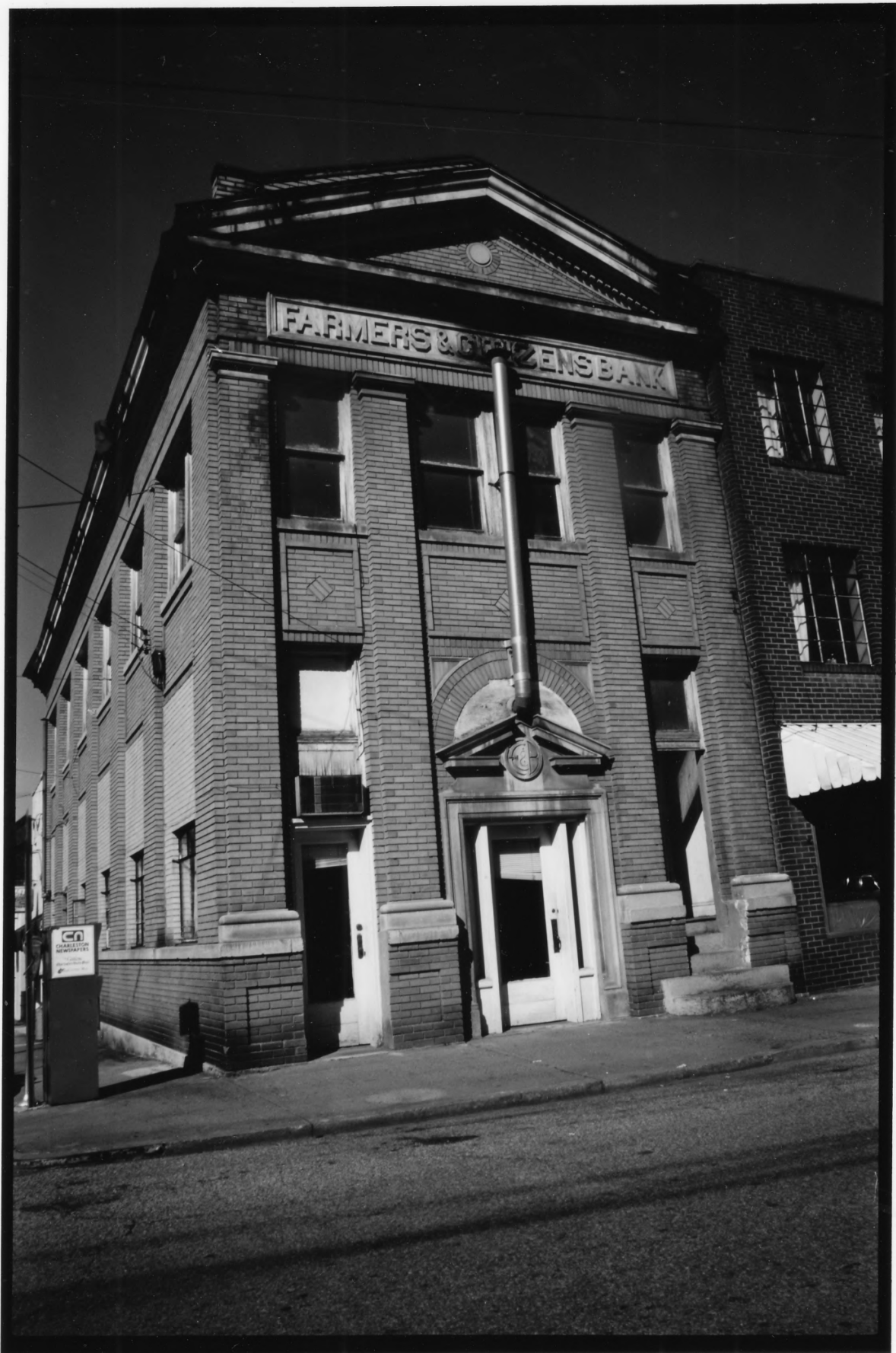
#21 Roxy Theatre

#22 Hi-R Block/Apt. Building

#23 Old Farmers & Citizens Bank

CLENDENIN HISTORIC DISTRICT, CLENDENIN, WV
KANAWHA CO.

PHOTO 6 of 14



#23 - OLD FARMERS AND CITIZENS BANK

CLENDENIN HISTORIC DISTRICT, CLENDENIN, WV
KANAWHA CO.

PHOTO 7 of 14



25 - OSBORNE GARAGE / DOLLAR General Store
1920

CLENDENIN HISTORIC DISTRICT, CLENDENIN, WV
KANAWHA CO,

PHOTO 8 of 14



From left to Right:

#32- MONARCH HOTEL - c1900

#33- FRAME APT. BUILDING c. 1905

#34- Three houses c. 1915

- Chinese Laundry

- City Hall and Jail

- Real estate, oil; gas - office building - KOONTZ early 1900 - 1930's

CLENDENIN HISTORIC DISTRICT, CLENDENIN, WV
KANAWHA CO

PHOTO 9 of 14



#41 - Clendenin - Campbell House - 1920

CLENDENIN HISTORIC DISTRICT, CLENDENIN, WVA
KANAWHA CO,

PHOTO 10 of 14



40[#] United Methodist Church 1921-22c.

CLENDENIN HISTORIC DISTRICT, CLENDENIN, WV
KANAWHA CO.

PHOTO 11 of 14



#45 - L.V. KOONTZ HOUSE 1911

CLENDENIN HISTORIC DISTRICT, CLENDENIN, WV
KANAWHA CO,

PHOTO 12 of 14



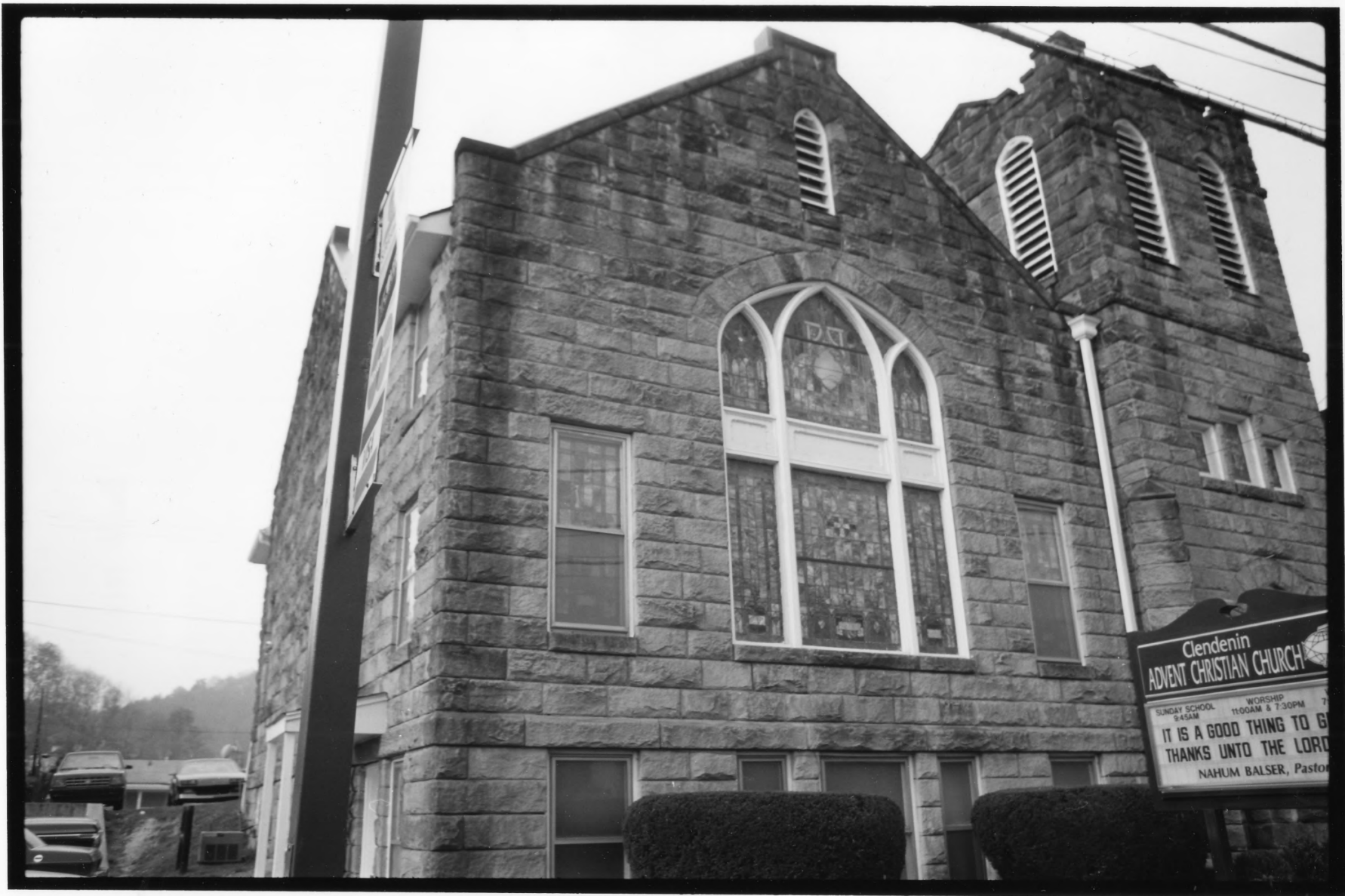
#45 - L.V. KOONTZ HOUSE 1911

CARRIAGE HOUSE TO LEFT

SERVANTS QUARTERS

CLENDENIN HISTORIC DISTRICT, CLENDENIN, W
KANAWHA CO.

PHOTO 13 of 14



Clendenin
ADVENT CHRISTIAN CHURCH

SUNDAY SCHOOL 9:45AM WORSHIP 11:00AM & 7:30PM
IT IS A GOOD THING TO GIVE
THANKS UNTO THE LORD
NAHUM BALSER, Pastor

#69. - WOOD MEMORIAL CHURCH / CLENDENIN ADVENT
CHRISTIAN CHURCH

Built 1914

CLENDENIN HISTORIC DISTRICT, CLENDENIN, WV
KANAWHA CO.

PHOTO 14 of 14