



①

U.S. ARSENAL / PORTER MILITARY ACADEMY

CHARLESTON, SC

CAROL ANN BOWERS, 1995

NEGATIVE: HISTORIC CHARLESTON FOUNDATION

VIEW LOOKING NORTH ALONG ASHLEY AVE

SHOWING 19<sup>th</sup> CENTURY BRICK WALL



(2)

U.S. ARSENAL / PORTER MILITARY ACADEMY

CHARLESTON, SC

CARROLL ANN BOWERS, 1995

NEGATIVE: HISTORIC CHARLESTON FOUNDATION


VIEW FROM THE SOUTHEAST SHOWING BRICK WALL,

WARING LIBRARY, AUTO (NONCONTRIBUTING)

DENTAL MUSEUM



MACAULAY  
LIBRARY

  
Macaulay Museum  
Of Dental History  
177-A-150 Bldg.

Wickliff  
Ashlee  
Parkin  
←

③ U.S. ARSENAL / PORTER MILITARY ACADEMY

CHARLESTON, SC

CARROLL ANN BOWERS, 1995

NEGATIVE: HISTORIC CHAS. FOUNDATION

VIEW LOOKING NORTH INCLUDING WARING LIBRARY

AND (NOW-CONTRIBUTING) DENTAL MUSEUM



④ WASHINGTON HISTORICAL LIBRARY, U.S. ARSENAL / PORTER MILITARY ACADEMY

CHARLESTON, SC

CARROLL ANN BOWERS, 1995

NEGATIVE: HISTORIC CHASN. FOUNDATION

SOUTH (FRONT) ELEVATION





WARING  
HISTORICAL  
LIBRARY

⑤

WARING LIBRARY / PORTER MILITARY ACADEMY

U.S. ARSENAL

CHARLESTON, SC

CARROLL ANN BOWERS, 1995

NEGATIVE: HISTORIC CHARLESTON FOUNDATION

SOUTH & SOUTHWEST ELEVATIONS, DETAIL OF

BRICKWORK  $\frac{1}{2}$  STONE TRIM  
1



⑥

WARING LIBRARY

U.S. ARSENAL / PORTER MILITARY ACADEMY

CHARLESTON, SC

CARROLL ANN BOWERS, JULY 1995

NEGATIVE: HISTORIC CHASN. FOUNDATION

VIEW FROM SOUTHWEST CORNER



⑦

WARING LIBRARY

U.S. ARSENAL / PORTER MILITARY ACADEMY

CHARLESTON, SC

CARROLL ANN BOWERS, 1995

NEGATIVE: HISTORIC CHASN. FOUNDATION

NORTHWEST ELEVATION



⑧

WARING LIBRARY / PORTER MILITARY ACADEMY

U.S. ARSENAL

CHARLESTON, SC

CAROLL ANN BOWERS, JULY 1995

NEGATIVE: HISTORIC CHASN. FOUNDATION

WEST ELEVATION





WAR  
HISTORY  
LIBRARY

WAR  
HISTORY  
LIBRARY

⑨ WARING LIBRARY

U.S. ARSENAL / PORTER MILITARY ACADEMY

CHARLESTON, SC

CARROLL ANN BOWERS, 1995

NEGATIVE: HISTORIC CHASN. FOUNDATION

SOUTHEAST ELEVATION



⑩ U.S. ARSENAL / PORTER MILITARY ACADEMY

CHARLESTON, S.C.

CARROLL ANN BOWERS, 1995

NEGATIVE: HISTORIC CHASN. FOUNDATION

WEST ELEVATION of 19<sup>th</sup> CENTURY WAR  
ALONG ASHLEY AVE.



⑪ U.S. ARSENAL / PORTER MILITARY ACADEMY

CHARLESTON, SC

JARROLL ANN DOWERS, 1995

NEGATIVE HISTORIC CHARLESTON FOUNDATION

VIEW LOOKING NORTHEAST ACROSS PARKING AREA

SHOWING COLLOCK HALL, (NON-CONTRIBUTING)

DENTAL MUSEUM & WARING LIBRARY



12

WARING HISTORICAL LIBRARY, U.S. ARSENAL / PORTER MILITARY  
ACADEMY

CHARLESTON, SC.

DR CURTIS WORTHINGTON, 1995

NEGATIVES: WARING LIBRARY

FIRST FLOOR ROOM





⑬

WARING LIBRARY, U.S. ARSENAL / PORTER MILITARY ACADEMY

CHARLESTON, SC

DR. CURTIS WORTHINGTON, APRIL 1995

NEGATIVES: M. U. S. C., WARING HISTORICAL LIBRARY

FIRST FLOOR VIEW SHOWING STAIRCASE



①④ WARING, LIBRARY, U.S. ARSENAL / PORTER MILITARY ACADEMY

CHARLESTON, SC

DR CURTIS WORTHINGTON, APRIL 1995

NEGATIVES: M. U.S.C., WARING HISTORICAL LIBRARY

STAIRCASE DETAIL



①⑤ WARING HISTORICAL LIBRARY, U.S. ARSENAL / PORTER MILITARY ACADEMY

CHARLESTON, SC,

DR. CURTIS WORTHINGTON, 1995

NEGATIVES: WARING LIBRARY

SECOND FLOOR ROOM



①⑥ Colcock Hall / Porter Military Academy

U.S. ARSENAL

CHARLESTON, S.C.

CARROLL ANN BOWERS, 1995

TITLE: HISTORIC CHAS. FOUNDATION

SOUTHEAST CORNER AND SURROUNDING LANDSCAPE





①⑦ CONCOCK HALL / PORTER MILITARY ACADEMY

UNITED STATES ARSENAL

CHARLESTON, SC

DR CURTIS WORTHINGTON, 1995

NEGATIVE: WARING HISTORICAL LIBRARY

SOUTH (PRINCIPAL) ELEVATION



COLCOCK HALL

18

COCKER HALL / PORTER MILITARY ACADEMY

U.S. ARSENAL

CHARLESTON, SC

DR. CURTIS WORTHINGTON, 1995

NEGATIVE: WARREN HIST. LIBRARY

SOUTH ELEVATION, DETAIL of 1<sup>st</sup> FLOOR ENTRY



①⑨ Colcock Hall / Porter Military Academy

U.S. ARSENAL

CHARLESTON, SC

DR. CURTIS WORTHINGTON, 1995

NEGATIVE: WARING LIBRARY

EAST ELEVATION



20

COLCOCK HALL / PORTER MILITARY ACADEMY

U.S. ARSENAL

CHARLESTON, SC

DR CURTIS WORTHINGTON, 1995

NEGATIVE: WARING HISTORICAL LIBRARY

NORTH ELEVATION





②1

COLCOCK HALL, U.S. ARSENAL / PORTER MILITARY ACADEMY

CHARLESTON, SC

DR. CURTIS WORTHINGTON, 1995

NEGATIVE: WARING HISTORICAL LIBRARY

INTERIOR, FIRST FLOOR, DETAIL OF ORIGINAL COLUMN



22

COLCOCK HALL, U.S. ARSENAL / PORTER MILITARY ACADEMY

CHARLESTON, SC

DR. CURTIS WORTHINGTON, 1995

NEGATIVE: WARING HISTORICAL LIBRARY

INTERIOR, FIRST FLOOR, CENTRAL STAIRCASE



②③ COLLOCK HALL, PORTER MILITARY ACADEMY

CHARLESTON, SC

DR. CURTIS WORTHINGTON, 1995

NEGATIVE: WARING HISTORICAL LIBRARY

INTERIOR, FIRST FLOOR, DETAIL OF DOOR TO WEST ROOM



24

COLCOCK HALL, U.S. ARSENAL / PORTER MILITARY ACADEMY

CHARLESTON, SC

DR. CURTIS WORTHINGTON, 1995

NEGATIVE: WARING HISTORICAL LIBRARY

INTERIOR, FIRST FLOOR, WEST ROOM





②⑤ ST. LUKE'S CHAPEL, / PORTER MILITARY ACADEMY  
UNITED STATES ARSENAL  
CHARLESTON, S.C.  
DR. CURTIS WORTHINGTON, 1995  
NEGATIVE: WARWICK HISTORICAL LIBRARY  
SOUTH ELEVATION



(26)

ST LUKE'S CHAPEL

UNITED STATES ARSENAL / PORTER MILITARY ACADEMY

CHARLESTON, SC

DR. CURTIS WORTHINGTON, 1995

NEGATIVE: WARING HISTORICAL LIBRARY

SOUTHEAST ELEVATION SHOWING

SOUTH WING



ST. LUKE'S CHAPEL,  
UNITED STATES ARSENAL, (27) PORTER MILITARY ACADEMY  
CHARLESTON, SC

DR. CURTIS WORTHINGTON, 1995

NEGATIVE: WARING HISTORICAL LIBRARY

VIEW FROM THE NORTHEAST



(28) ST. LUKE'S CHAPEL,  
UNITED STATES ARSENAL, / PORTER MILITARY ACADEMY

CHARLESTON, SC

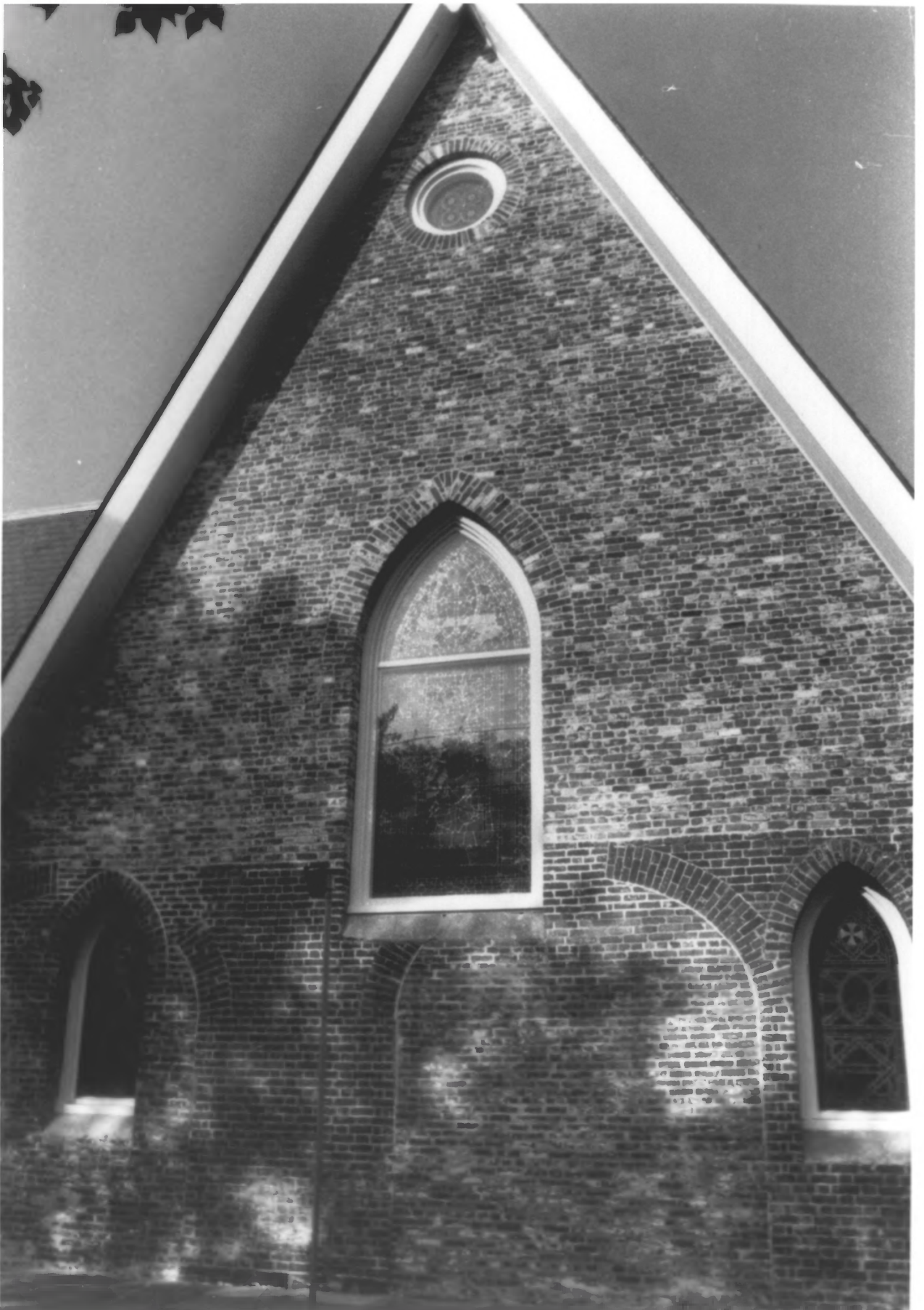
DR. CURTIS WORTHINGTON, 1995

NEGATIVE: WARING HISTORICAL LIBRARY

EAST ELEVATION DETAIL

of CLOSED CENTRAL DOORWAY





29 ST. LUKE'S CHAPEL,  
UNITED STATES ARSENAL, / PORTER MILITARY ACADEMY  
CHARLESTON, SC

DR. CURTIS WORTHINGTON, 1995

NEGATIVE: WARING HISTORICAL LIBRARY

EAST ELEVATION



30

ST. LUKE'S CHAPEL

UNITED STATES ARSENAL / PORTER MILITARY ACADEMY

CHARLESTON, SC

DR. CURTIS WORTHINGTON, 1995

NEGATIVE: WARING HISTORICAL LIBRARY

WEST ELEVATION of WEST ADDITION



U.S. ARSENAL

(31)

PORTER MILITARY ACADEMY

CHARLESTON, S.C.

CARROLL ANN BOWERS, 1995

NEGATIVE: HISTORIC CHASN. FOUNDATION

VIEW OF SOUTHEAST WING OF ST. LUKE'S CHAPEL

LOOKING NORTHWEST TO WALL & BEE STREET



32 ST. LUKE'S CHAPEL,  
UNITED STATES ARSENAL, / PORTER MILITARY ACADEMY  
CHARLESTON, SC

PHOTOGRAPHER UNKNOWN, 1989

COLOR PRINT: WARING HISTORICAL LIBRARY

SOUTHEAST CORNER SHOWING HUGO DAMAGE





St. Luke's Chapel

33

ST. LUKE'S CHAPEL .

UNITED STATES ARSENAL / PORTER MILITARY ACADEMY

CHARLESTON, SC

PHOTOGRAPHER SEPTEMBER 1989  
UNKNOWN,

COLOR PRINT: WARING HISTORICAL LIBRARY

SOUTH ELEVATION SHOWING HUGO DAMAGE



(34)

ST. LUKE'S CHAPEL,

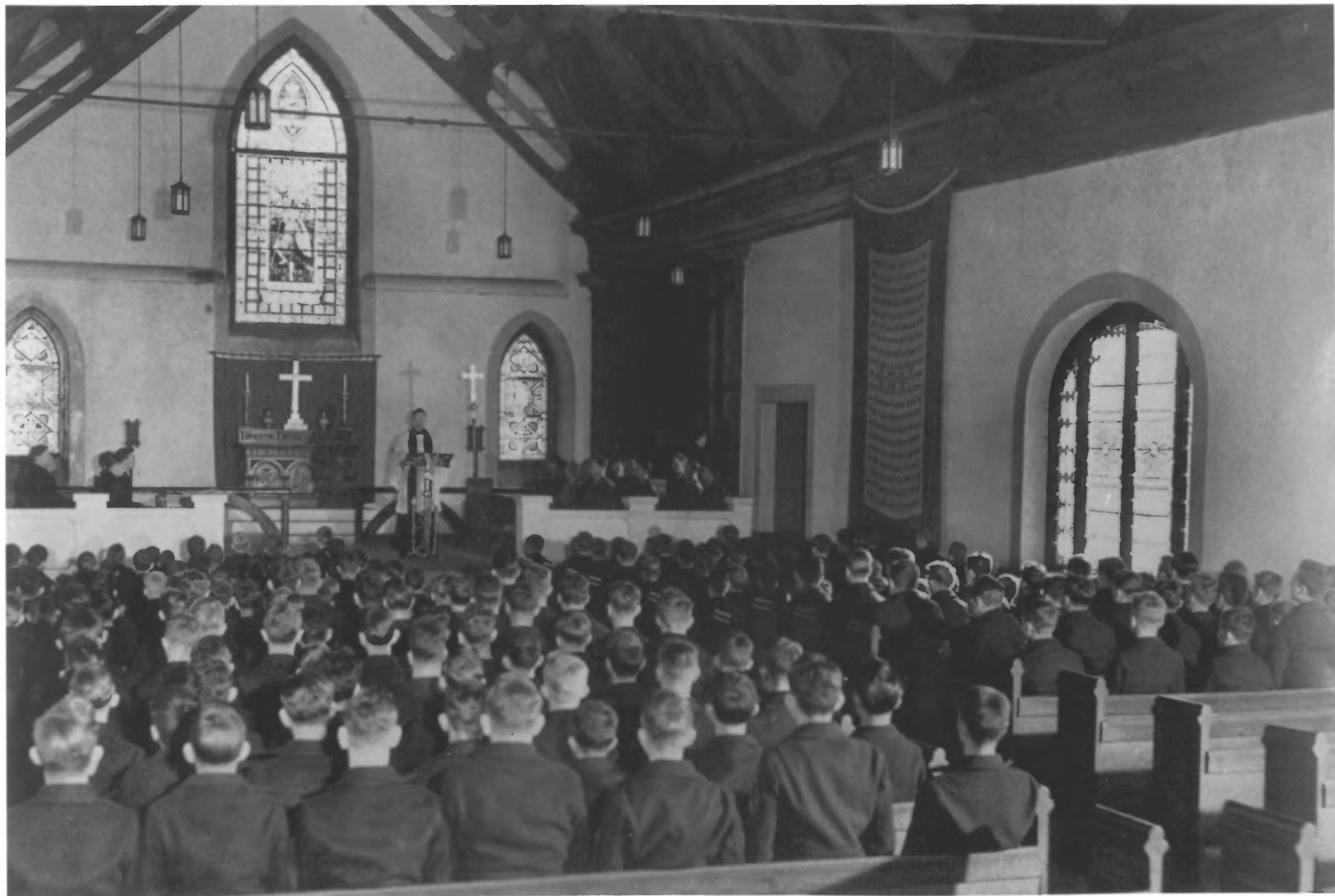
UNITED STATES ARSENAL, / PORTER  
MILITARY ACADEMY

CHARLESTON, SC

MUSC PHOTOGRAPHER, 1989

PRINT: WARING, HISTORICAL LIBRARY

VIEW OF SOUTHWEST CORNER, WEST ADDITION  
SHOWING HUGO DAMAGE



(35) ST. LUKE'S CHAPEL,  
UNITED STATES ARSENAL, / PORTER MILITARY ACADEMY  
CHARLESTON, SC

PORTER MILITARY ACADEMY STAFF MEMBER, 1946

PRINT: WARING HISTORICAL LIBRARY

INTERIOR VIEW



(36)

ST. LUKE'S CHAPEL

UNITED STATES ARSENAL / PORTER MILITARY ACADEMY

CHARLESTON, SC

M. U. S. C. STAFF PHOTOGRAPHER, PRE 1989

INTERIOR, DETAIL OF ALTAR

PRINT: WARING LIBRARY





(37) ST. LUKE'S CHAPEL,  
UNITED STATES ARSENAL, / PORTER MILITARY ACADEMY  
CHARLESTON, SC

NEGATIVES: WARING HISTORICAL LIBRARY

TAKEN BY MUSC OFFICIAL PHOTOGRAPHER, pre 1989

INTERIOR VIEW



(38)

ST. LUKE'S CHAPEL,

UNITED STATES ARSENAL, / PORTER MILITARY ACADEMY

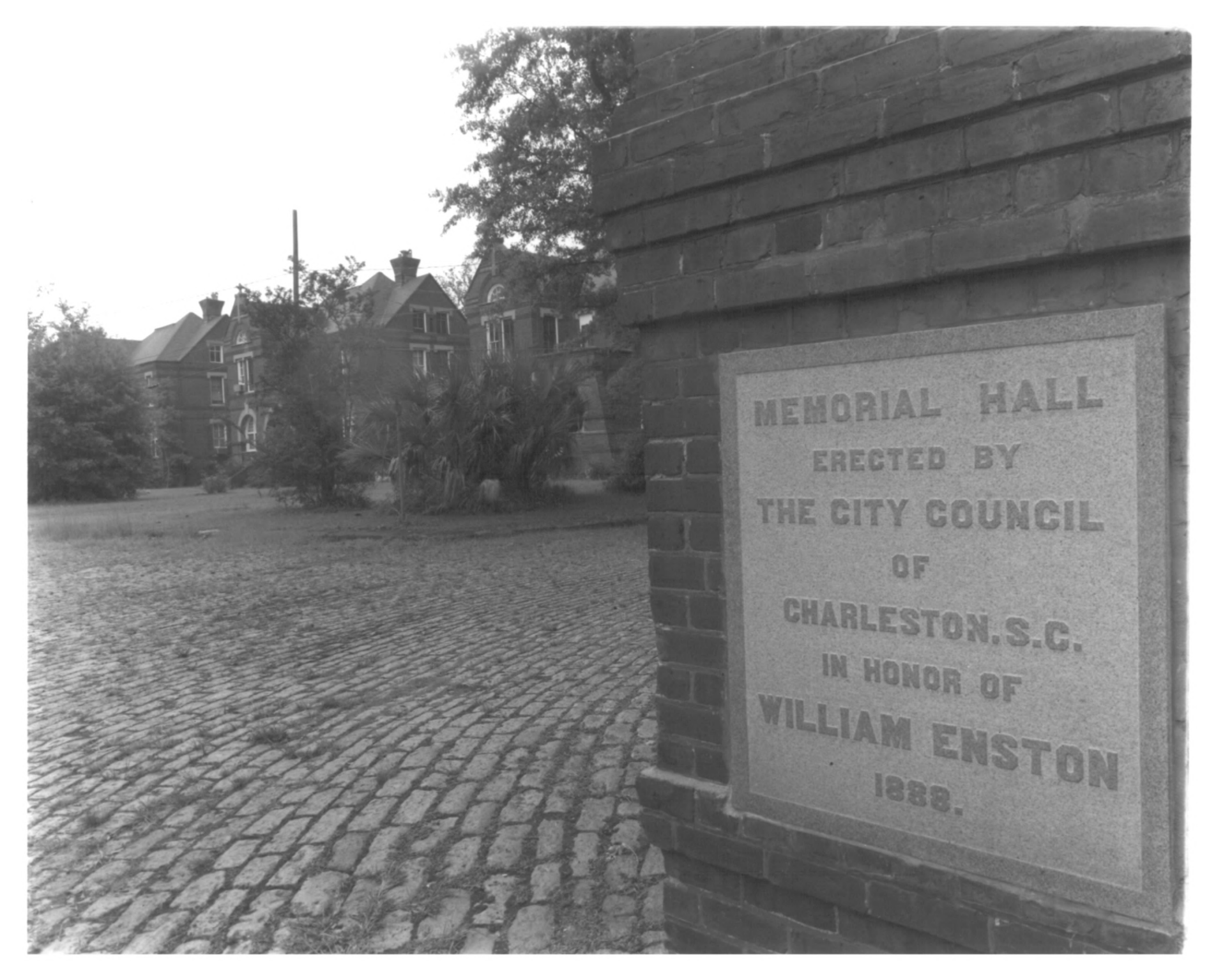
CHARLESTON, SC,

NEGATIVE: WARING HISTORICAL LIBRARY

BEFORE 1989

MUSC PHOTOGRAPHER

INTERIOR, CENTRAL AISLE LOOKING EAST



**MEMORIAL HALL**  
**ERECTED BY**  
**THE CITY COUNCIL**  
**OF**  
**CHARLESTON, S.C.**  
**IN HONOR OF**  
**WILLIAM ENSTON**  
**1888.**



SC-686-1

ENSTON HOMES  
900 KING ST.

CHARLESTON, SC

① MEMORIAL HALL CORNERSTONE  
COTTAGES ON COLSTERWORTH AVE.  
LOOKING NORTH



SC-686-2

ENSTON HOMES

900 KING ST.

CHARLESTON, SC

② COTTAGES ON N.W. END OF ST. MARTIN'S CT.  
LOOKING N.W.





SC-686-3

ENSTON HOMES

900 KING ST.

CHARLESTON, SC

③ COTTAGES ON N.E. END OF ST. MARTINS G.  
LOOKING WEST



SC- 686-4

ENSTON HOMES

900 KING ST.

CHARLESTON, SC

④ COTTAGES ON N.W. END OF ST. MARTINS G.  
LOOKING S.E.



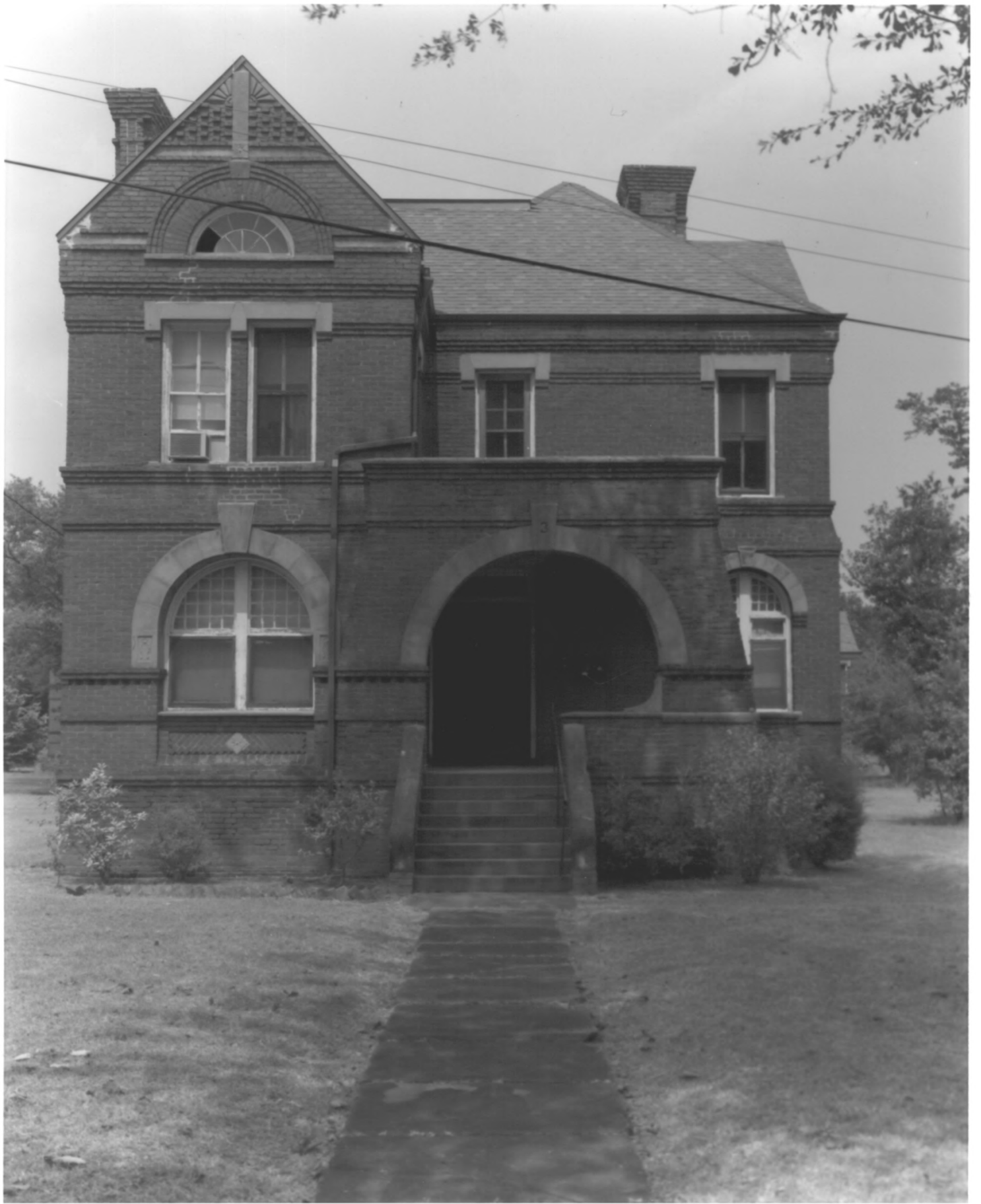
SC-686-5

ENSTON HOMES

900 KING ST.

CHARLESTON, SC

⑤ COTTAGES ON N.W. END OF ST. MARTIN'S CT.  
LOOKING S.E., CLOSER



SC-686-6

ENSTON HOMES

900 KING ST.

CHARLESTON, SC

⑥ COTTAGE NO. 3, S.W. FRONT



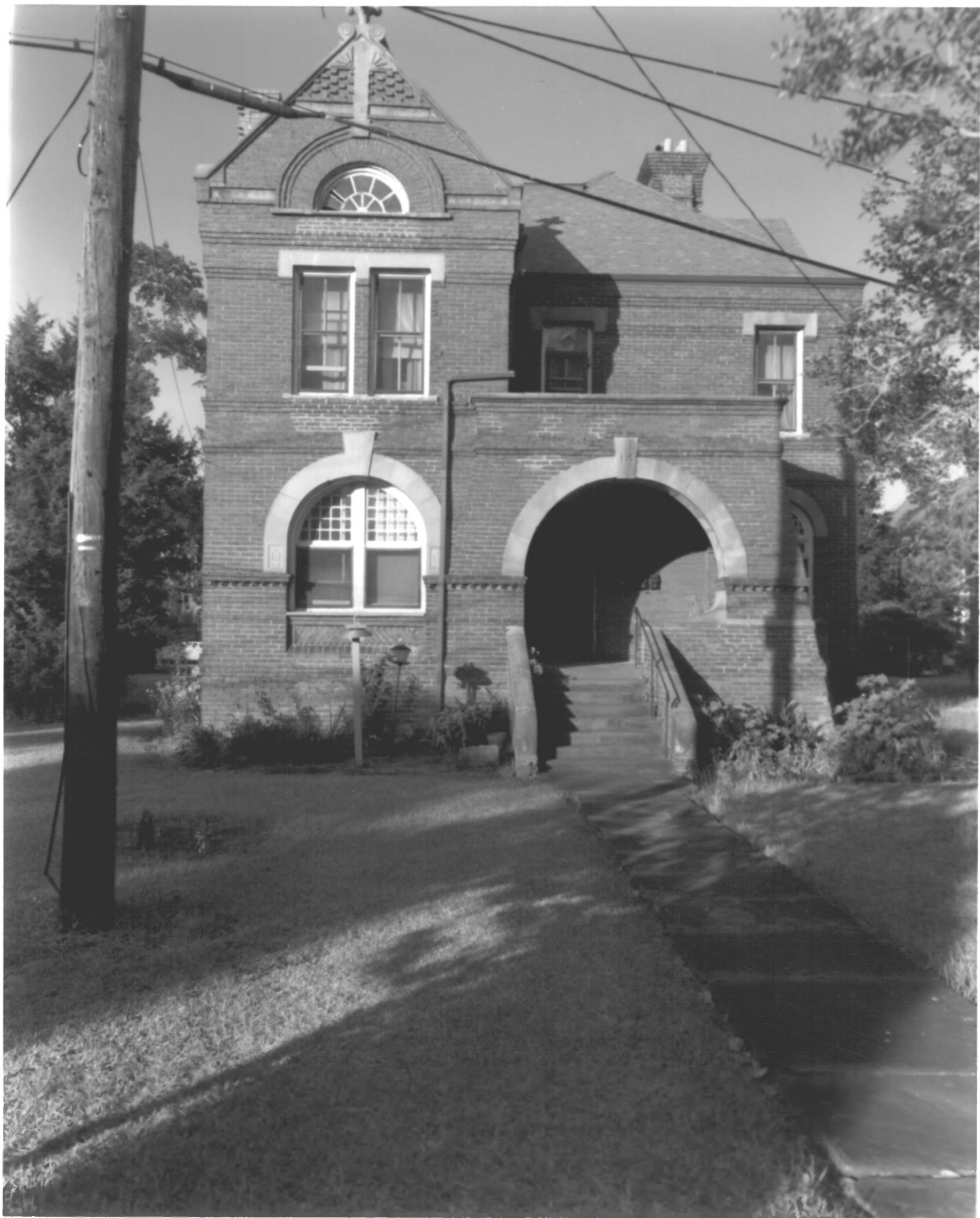


SC-686-7

ENSTON HOMES  
900 KING ST.

CHARLESTON, SC

⑦ COTTAGE NO. 3, S.W. FRONT, DETAIL OF  
WINDOW & ENTRANCE



SC-686-8

ENSTON HOMES

900 KING ST.

CHARLESTON, SC

⑧ COTTAGE NO. 14, S.E. FRONT



SC - 686 A-1

ENSTON HOMES  
900 KING ST.  
CHARLESTON, SC

⑨ S. W. FRONT, COTTAGE No. 2



SC-686-B-1

ENSTON HOMES  
900 KING ST.  
CHARLESTON, SC

⑩ N.W. SIDE & S.W. FRONT, COTTAGE No. 6





SC-686-d-1

ENSTON HOMES  
900 KING ST.  
CHARLESTON, SC

①① MEMORIAL HALL, S. W. FRONT



SC-686-C-2

ENSTON HOMES  
900 KING ST.  
CHARLESTON, SC

(12) MEMORIAL HALL, S. W. FRONT



SC-686-C-3

ENSTON HOMES

900 KING ST.

CHARLESTON, SC

(13) MEMORIAL HALL, S.W. FRONT & S.E. SIDE



COLSTERWORTH ST

SC-686-C-4

ENSTON HOMES  
900 KING ST.  
CHARLESTON, SC

⑭ MEMORIAL HALL, S.E. & N.E SIDES





SC-686-E-1

ENSTON HOMES

900 KING ST.

CHARLESTON, SC

(15) WATER TOWER, S. SIDE



SC-686-G-1

ENSTON HOMES  
900 KING ST.

CHARLESTON, SC

(16) ENGINE HOUSE, S.W. SIDE & S.E. FRONT