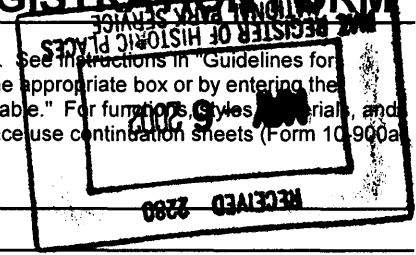


658

NATIONAL REGISTER OF HISTORIC PLACES REGISTRATION FORM

This form is for use in nominating or requesting determinations of eligibility for individual properties or districts. See instructions in "Guidelines for Completing National Register Forms" (National Register Bulletin 16). Complete each item by marking "x" in the appropriate box or by entering the requested information. If an item does not apply to the property being documented, enter "N/A" for "not applicable." For functions, styles, materials, and areas of significance, enter only the categories and subcategories listed in the instructions. For additional space use continuation sheets (Form 10-900a). Type all entries.



1. Name of Property

historic name Cumming Bandstand
other names/site number n. a.

2. Location

street & number corner of Court Square North (Main St.) and Court Square East (Dahlonega St.)
city, town Cumming () vicinity of
county Forsyth code GA 117
state Georgia code GA zip code 30040

() not for publication

3. Classification

Ownership of Property:

- () private
- (X) public-local
- () public-state
- () public-federal

Category of Property:

- () building(s)
- () district
- () site
- (X) structure
- () object

Number of Resources within Property:

Contributing

Noncontributing

buildings	0	0
sites	0	0
structures	1	0
objects	0	0
total	1	0

Contributing resources previously listed in the National Register: N/A

Name of previous listing: N/A

Name of related multiple property listing: N/A

4. State/Federal Agency Certification

As the designated authority under the National Historic Preservation Act of 1966, as amended, I hereby certify that this nomination meets the documentation standards for registering properties in the National Register of Historic Places and meets the procedural and professional requirements set forth in 36 CFR Part 60. In my opinion, the property meets the National Register criteria. () See continuation sheet.

Richard Coates
Signature of certifying official

5-1-02
Date

W. Ray Luce
Historic Preservation Division Director
Deputy State Historic Preservation Officer

In my opinion, the property () meets () does not meet the National Register criteria. () See continuation sheet.

Signature of commenting or other official

Date

State or Federal agency or bureau

5. National Park Service Certification

I, hereby, certify that this property is:

entered in the National Register

Edson H. Beall 6.20.02

determined eligible for the National Register

determined not eligible for the National Register

removed from the National Register

other, explain:

see continuation sheet

Ray
Keeper of the National Register Date

6. Function or Use

Historic Functions:

RECREATION AND CULTURE: music facility (bandstand)

Current Functions:

RECREATION AND CULTURE: outdoor recreation, music facility

7. Description

Architectural Classification:

Other: Bandstand

Materials:

foundation	wood
walls	wood
roof	asphalt shingles
other	n.a.

Description of present and historic physical appearance:

The Cumming Bandstand is in Cumming, the county seat of Forsyth County. Situated approximately 40 miles north of Atlanta, Cumming has historically been a small county-seat community in a rural county; but during the past decade, the county has grown rapidly as suburban development has spread northward from Atlanta along the Georgia 400 corridor, and considerable new development is taking place in the traditionally small county seat.

The Cumming Bandstand is located at the northeast corner of the historic courthouse square in downtown Cumming. This corner of the square is formed by the intersection of Court House North (Main Street) and Court House East (Dahlonega Street).

Built in 1915, the bandstand is a small, one-story, octagonally shaped, open-air wood-framed structure. The wood-framed floor or platform of the bandstand is raised approximately four feet above ground level and is approximately 18 feet across; each of its eight sides is six-and-a-half feet long. Eight six-inch-square perimeter posts support the octagonally shaped roof; these posts are tied to the structure with a simple horizontal railing and angle braces. Simple wooden benches supported by wide-board legs are located between the posts on seven sides of the structure; the horizontal railings between the main posts serve as the backs of the benches. Replacement concrete steps provide access through the one open side of the bandstand. The pyramidal roof features exposed rafters and rafter ends; the roof itself is covered with modern asphalt shingles. The clear-span roof structure is made of exposed dimensioned lumber with radiating beams, rafters, and angled supports forming a complex truss-like structure. Wood lattice (in-kind replacement of the original) and recent shrubbery screen the underside of the bandstand. All the wood is painted white with the exception of the floor and bench seats which are painted a dark gray-green.

National Register of Historic Places **Continuation Sheet**

Section 7--Description

The bandstand stands at the corner of Court House North (Main Street) and Court House East (Dahlongega Street) at the northeast corner of the courthouse square. It is surrounded on two sides (to the west and south) by the open lawn and large shade trees of the courthouse square; a small contemporary shrubbery garden separates the bandstand from the adjacent city streets. The bandstand shares the courthouse square with the large 1978 courthouse which replaced the 1905 courthouse after it was burned in 1973. A mixture of historic and nonhistoric commercial and other structures surrounds the courthouse square; large-scale new development is taking place across the streets immediately north and east of the bandstand.

8. Statement of Significance

Certifying official has considered the significance of this property in relation to other properties:

nationally statewide locally

Applicable National Register Criteria:

A B C D

Criteria Considerations (Exceptions): N/A

A B C D E F G

Areas of Significance (enter categories from instructions):

Architecture
Entertainment/Recreation

Period of Significance:

1915-1953

Significant Dates:

1915

Significant Person(s):

n.a.

Cultural Affiliation:

n.a.

Architect(s)/Builder(s):

John Robbs (builder)

National Register of Historic Places **Continuation Sheet**

Section 8--Statement of Significance

Narrative statement of significance (areas of significance)

The Cumming Bandstand is significant as one of a very small number of extant historic bandstands on county courthouse squares in Georgia. Although other historic bandstands exist in city parks and on current and former military bases, relatively few were ever built and very few remain on county courthouse squares. Only two are currently listed in the National Register--both are included in historic downtown districts (in Bainbridge, Decatur County, and Sandersville, Washington County)—and no other National Register-eligible bandstands on county courthouse squares are known to exist at this time.

Forsyth County was created on the Georgia frontier in 1832 out of land seized from the Cherokee Indian Nation by the State of Georgia. Cumming was chartered as its county seat in 1834. Its first courthouse was likely a private home and then a log structure on the southwest corner of the new courthouse square. In 1839 a frame courthouse was constructed on the courthouse square at the center of the still-small but growing county-seat community. This wood courthouse was replaced on the square by a brick building in 1854, and it was replaced by a larger brick structure in 1905. In 1973 the early 20th-century courthouse was burned. A much larger traditionally designed courthouse replaced it on the square in 1978.

The Cumming Bandstand was built on the Forsyth County courthouse square in 1915 by local contractor John Robbs. Construction costs were paid for with private donations. The bandstand was built for the Cumming Cornet Band which held concerts on the courthouse square on Sunday afternoons. The bandstand also was used for other band concerts and choral performances (particularly by high school groups) and for outdoor recreational activities, political campaigns, weddings, and informal socializing along with celebrations of local agricultural and industrial progress. The bandstand was located adjacent to the area on the courthouse square where the annual summer Chataqua was staged, and it was a focal point for annual “Fescue Festivals” celebrating local agriculture starting in 1948.

The Cumming Bandstand is significant in the area of architecture as a rare, intact, and excellent example of a bandstand on a courthouse square in Georgia. It retains its distinctive polygonal form, open-air construction, raised platform, perimeter benches, and pyramidal roof along with virtually all its original construction materials. It is characterized by simple, straightforward design and construction befitting its historical place in the small county-seat community of a rural county. It remains situated on the northeast corner of the historic courthouse square in the center of downtown Cumming, bordered on two sides by open lawn and large shade trees. It is significant in the area of entertainment/recreation for its use in a variety of outdoor activities including band concerts and choral performances, political campaigns, weddings, local festivals, and celebrations of local agricultural and industrial progress, along with informal socializing. These were important social and recreational activities in a small county-seat community in a rural county. The bandstand, along with the landscaped courthouse square, provided a stage as well as a focal point for them. The importance of the bandstand in local social and recreational activities is testified by the number of

National Register of Historic Places **Continuation Sheet**

Section 8--Statement of Significance

historic photographs of events on the courthouse square which show the bandstand being used as an integral part of the activities.

National Register Criteria

A: The Cumming Bandstand meets National Register Criterion A for its associations with important local social and recreational activities including band concerts and choral performances, political campaigns, weddings, local festivals, and celebrations of local agricultural and industrial progress, along with informal socializing . These were important social and recreational activities in a small county-seat community in a rural county.

C: The Cumming Bandstand meets National Register Criterion C as a rare, intact, and excellent example of a bandstand on a courthouse square in Georgia which retains its distinctive polygonal form, open-air construction, raised platform, perimeter benches, and pyramidal roof along with virtually all its original construction materials.

Criteria Considerations (if applicable)

n. a.

Period of significance (justification)

The period of significance begins in 1915 with the construction and first use of the bandstand. It extends until 1953, which closely coincides with the end of the historic period (50-year cut-off) but includes the last "historic" events and activities associated with the bandstand including the annual "Fescue Festivals" which started in the late 1940s and continued until 1953 at this location.

Contributing/Noncontributing Resources (explanation, if necessary)

The one contributing structure is the bandstand. There are no noncontributing resources.

9. Major Bibliographic References

This nomination is based in large measure on the "Historic Property Information Form: Cumming Bandstand," prepared by Annette Bramblett, 2001. On file at the Historic Preservation Division, Georgia Department of Natural Resources, Atlanta, Georgia.

Bagley, Garland C. *History of Forsyth County, Georgia, Vol. I.* Easley, South Carolina: Southern Historical Press, Inc., 1985.

---- . *History of Forsyth County, Georgia, Vol. II.* Easley, South Carolina: Southern Historical Press, Inc., 1990.

Barrett, Gladys K. *Stroll Around the Square in Cumming.* Cumming, Georgia: Wilco Press, 1989.

Shadburn, Don L. *Pioneer History of Forsyth County, Georgia.* Roswell, Georgia: W. H. Wolfe Associates, 1981.

Previous documentation on file (NPS): (X) N/A

- preliminary determination of individual listing (36 CFR 67) has been requested**
- preliminary determination of individual listing (36 CFR 67) has been issued**
date issued:
- previously listed in the National Register**
- previously determined eligible by the National Register**
- designated a National Historic Landmark**
- recorded by Historic American Buildings Survey #**
- recorded by Historic American Engineering Record #**

Primary location of additional data:

- State historic preservation office**
- Other State Agency**
- Federal agency**
- Local government**
- University**
- Other, Specify Repository:**

Georgia Historic Resources Survey Number (if assigned): FO-OC-47

10. Geographical Data

Acreage of Property 0.33 acres

UTM References

A) Zone 16 Easting 763565 Northing 3788580

Verbal Boundary Description

The nominated property is drawn to scale with a dashed line on the attached "Property/Sketch Map." The nominated property is an L-shaped tract that comprises the northeast corner of the courthouse square. It extends from the north and east facades of the 1978 courthouse building to the curb along the south side of Court House North (Main Street) and the west side of Court House East (Dahlonoga Street). The L-shaped tract runs along the south curb line of Court House North (Main Street) from its intersection with Court House East (Dahlonoga Street) for a distance of approximately 160 feet to a parking area behind (west of) the courthouse and along the west curb line of Court House East (Dahlonoga Street) from its intersection with Court House North (Main Street) approximately 130 feet to the front walk of the courthouse.

Boundary Justification

The nominated property encompasses the intact quadrant of the historic courthouse square which formed the immediate historic setting for the bandstand. It includes the bandstand at the northeast corner and the landscaped courthouse square with its open lawn and large shade trees extending west of the bandstand to a parking area behind the courthouse and south of the bandstand to the modern front walk to the courthouse. This is the remaining historic portion of the courthouse square directly associated with the bandstand and the activities that took place in and around the bandstand.

11. Form Prepared By

State Historic Preservation Office

name/title Richard Cloues, Deputy State Historic Preservation Officer
organization Historic Preservation Division, Georgia Department of Natural Resources
mailing address 156 Trinity Avenue, S.W., Suite 101
city or town Atlanta **state** Georgia **zip code** 30303
telephone (404) 656-2840 **date** May 1, 2002
e-mail richard_cloues@dnr.state.ga.us

Consulting Services/Technical Assistance (if applicable) () not applicable

name/title Annette Bramblett
organization Historical Society of Forsyth County, Inc.
mailing address 2960 Dishroom Road
city or town Cumming **state** GA **zip code** 30040
telephone 770-887-8464
e-mail n.a.

- () **property owner**
() **consultant**
() **regional development center preservation planner**
(X) **other:** Historical Society representative

Property Owner or Contact Information

name (property owner or contact person) Forsyth County Board of Commissioners
organization (if applicable) Forsyth County
mailing address 110 East Main Street, Suite 210
city or town Cumming **state** GA **zip code** 30040
e-mail (optional) n.a.

National Register of Historic Places **Continuation Sheet**

Photographs

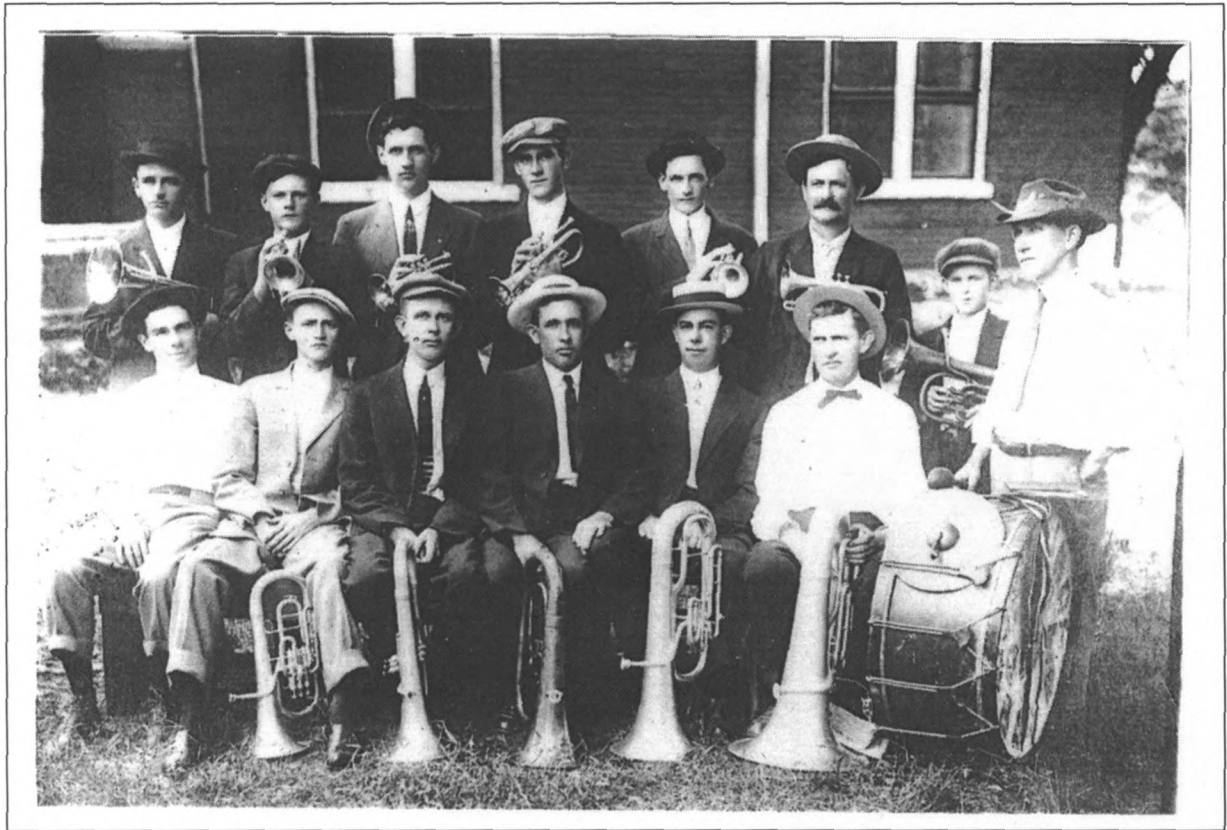
Name of Property: Cumming Bandstand
City or Vicinity: Cumming
County: Forsyth
State: Georgia
Photographer: James R. Lockhart
Negative Filed: Georgia Department of Natural Resources
Date Photographed: December 2001

Description of Photograph(s):

Number of photographs: 6

1. Cumming Bandstand, from Court Square East; photographer facing west.
2. Cumming Bandstand (foreground), 1978 Forsyth County Courthouse (background), from intersection of Court Square East and Courth Square North; photographer facing southwest.
3. Cumming Bandstand from courthouse square; photographer facing northeast.
4. Cumming Bandstand from courthouse square; photographer facing northwest.
5. Cumming Bandstand, interior view; photographer facing west.
6. Cumming Bandstand, courthouse square, and downtown Cumming, from intersection of Court Square North and Court Square East; photographer facing southwest.

(HPD WORD form version 11-03-01)



Cumming Bandstand
Forsyth County, Georgia

ATTACHMENT 1 OF 3

Cumming Cornet Band
Courthouse Square

1916



Cumming Bandstand
Forsyth County, Georgia

ATTACHMENT 2 OF 3

1949 Fescue Festival on Courthouse Square
Bandstand in upper right corner of picture
Photographer facing northwest

1949

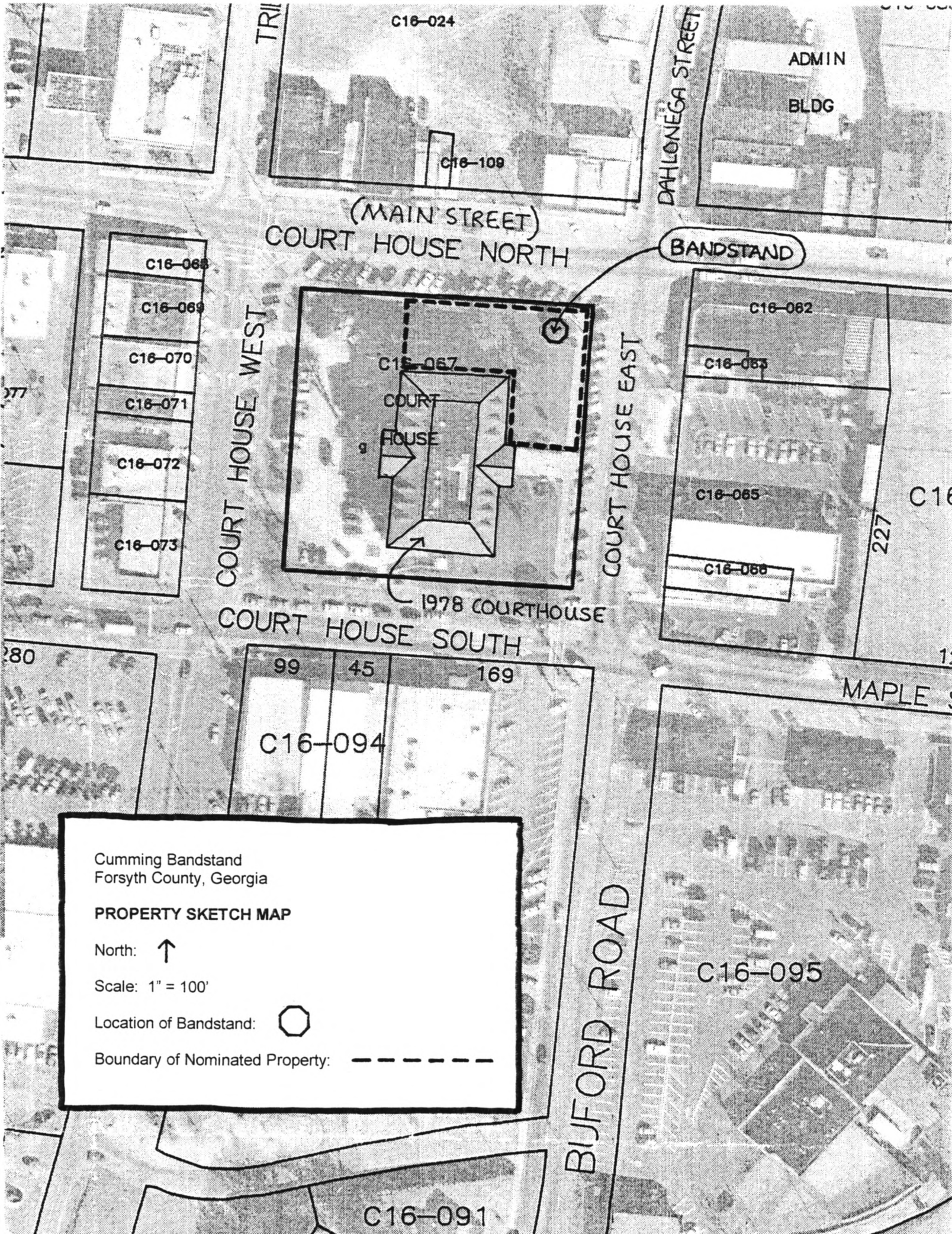


Cumming Bandstand
Forsyth County, Georgia

ATTACHMENT 3 OF 3

1949 Fescue Festival on Courthouse Square
Close-up of Bandstand
Photographer facing northwest

1949



C16-024

C16-109

ADMIN
BLDG

DAHLONEGA STREET

TRIL

(MAIN STREET)
COURT HOUSE NORTH

BANDSTAND

C16-068

C16-069

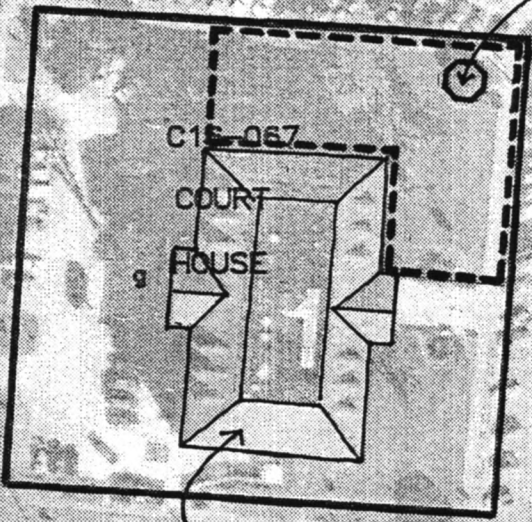
C16-070

C16-071

C16-072

C16-073

COURT HOUSE WEST



COURT HOUSE EAST

C16-062

C16-063

C16-065

C16-066

227

C16

1978 COURTHOUSE
COURT HOUSE SOUTH

99 45 169

C16-094

MAPLE STREET

BIJFORD ROAD

C16-095

C16-091

Cumming Bandstand
Forsyth County, Georgia

PROPERTY SKETCH MAP

North: ↑

Scale: 1" = 100'

Location of Bandstand: ○

Boundary of Nominated Property: - - - - -