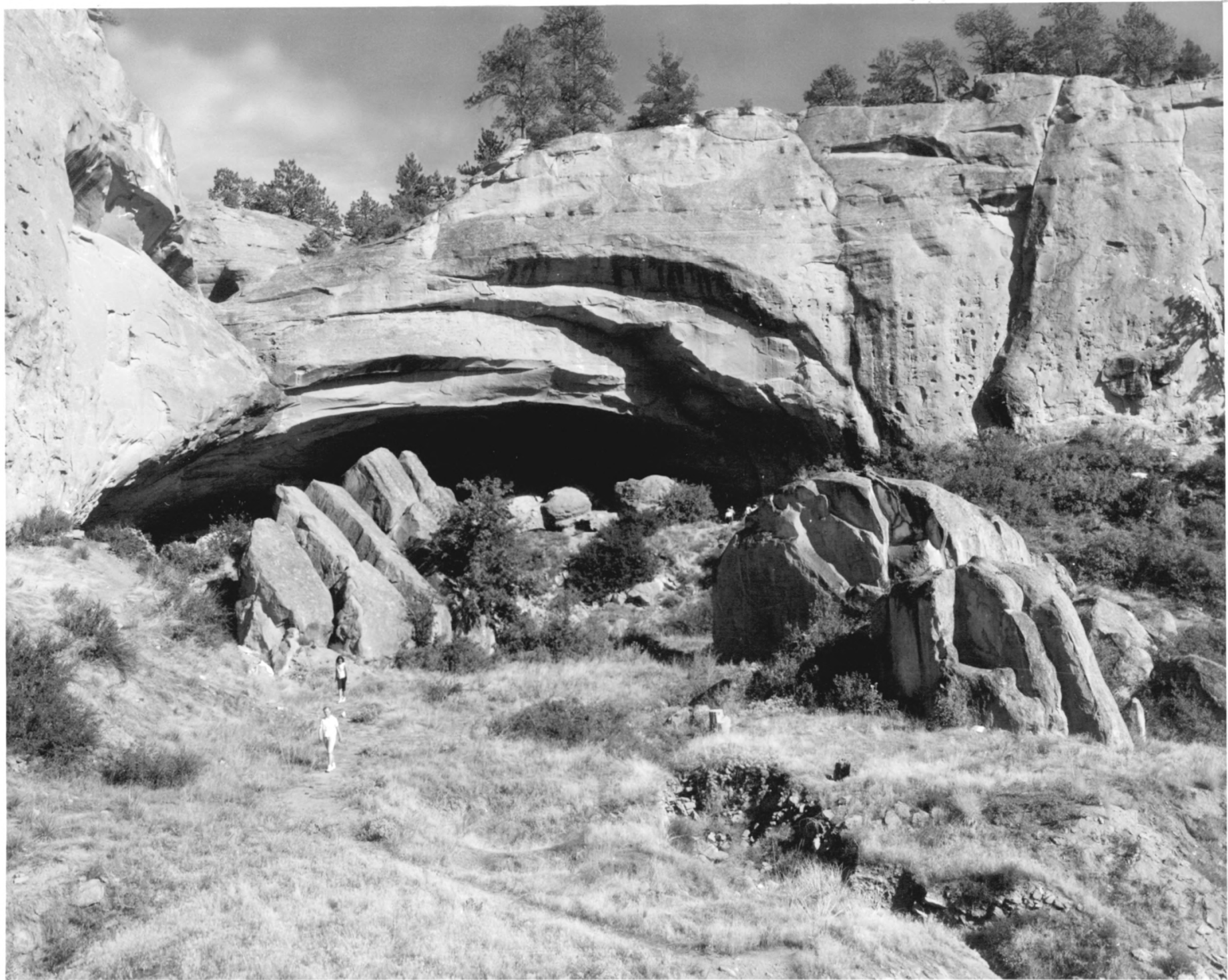




.....
PICTOGRAPH CAVE

Billings, Montana, Yellowstone County
Vernon Hennessay, Yellowstone Natl. Park,
11/9/70, negative filed at, unknown
Pictograph Cave looking east; vintor trail
in foreground.



35 miles

50 pias

MONTANA

15475

View NNE toward Pictograph Cave; Ghost Cave is to
photographers' left.

September, 1956



PICTOGRAPH CAVE

Billings, Montana, Yellowstone County

Vernon Hennessay, 11/9/70

negative filed at, unknown

Gentle slopes with boulders in front of and to the west of Pictograph Cave, arroyo to left leading from mouth of cave.

INDIAN CAVES NATIONAL HISTORIC LANDMARK (Pictograph Caves)

Evidence of gross vandalism in the area. If there were ever any pictographs here, they are obscured.

NOV 8 1970

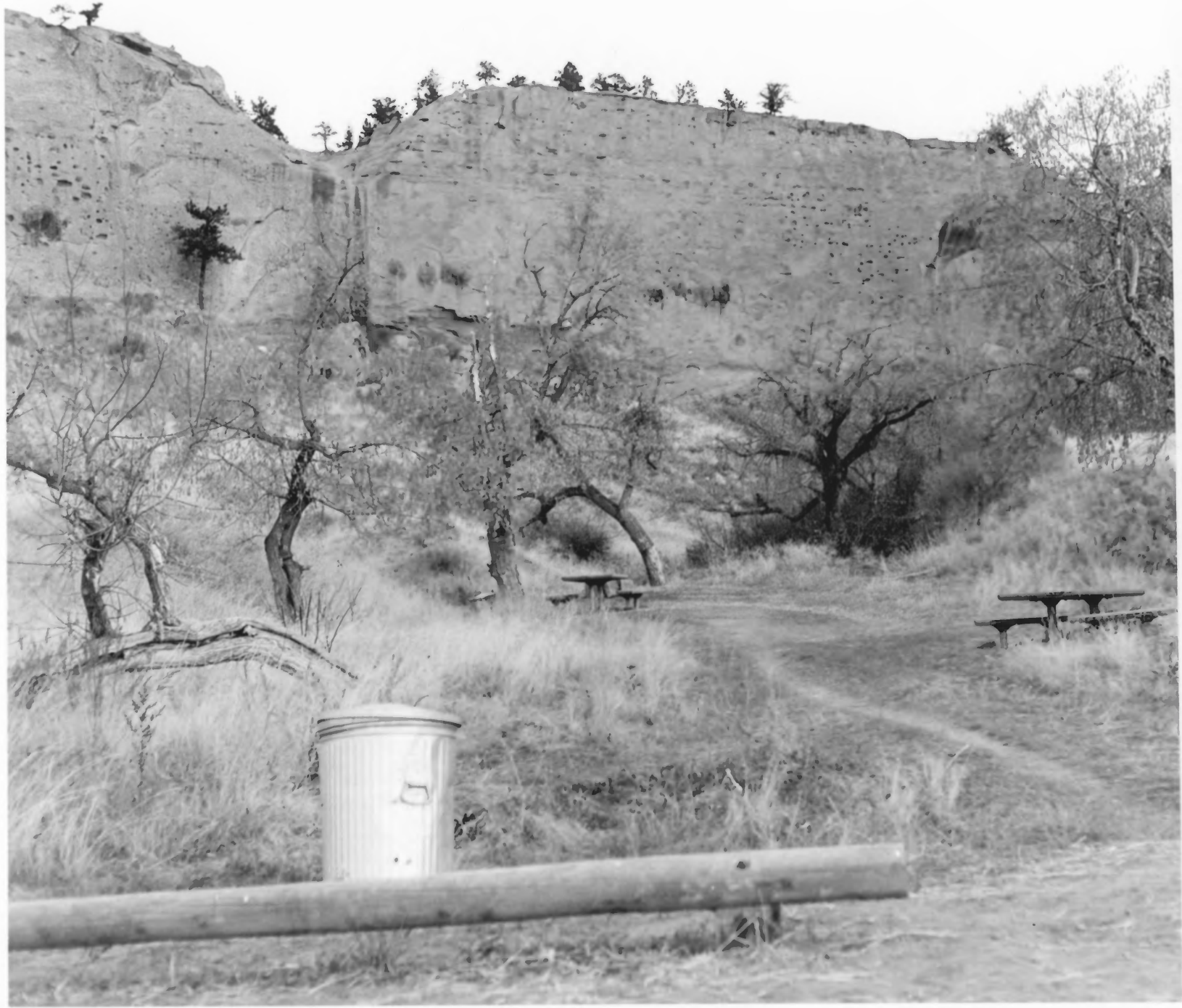


INDIAN CAVES NATIONAL HISTORIC LANDMARK (Pictograph Caves)

Evidence of gross vandalism in the area. If there were ever any pictographs here, they are obscured.

NOV 9 1970





INDIAN CAVES NATIONAL HISTORIC LANDMARK (Pictograph Caves)

Picnic facilities as shown from the parking area.

NOV 9 1970

TOP



PICTOGRAPH CAVE

Billings, Montana, Yellowstone County
Vernon Hennessy, Yellowstone Natl. Park,
11/9/70, negative filed at is unknown
One of few remaining series of pictographs
in 1970 on back wall of Pictograph Cave.

INDIAN CAVES NATIONAL HISTORIC LANDMARK (Pictograph Caves)

Pile of broken sandstone which has sluffed off the ceiling above. Some of this sluffed-off material may have contained pictographs which were destroyed when it came of the ceiling.

NOV 9 1970



