

MAY 19 1986
APR 4 1986

FORM A - AREA

MASSACHUSETTS HISTORICAL COMMISSION
294 Washington Street, Boston, MA. 02108

Form numbers in this area	Area letter
	MC I 7

USGS Maps St

Photo (3x3" or 3x5")
Staple to left side of form

Photo number 77-21

52-11
77-27
52-2

Town Cambridge Mass.
Cambridge MRA

Name of area (if any) Shady Hill

Historic District

General date or period 1889-1936

Sketch map. Draw a general map of the area indicating properties within it. Number each property for which individual inventory forms have been completed. Label streets (including route numbers, if any) and indicate north. (Attach a separate sheet if space here is not sufficient)

SEE ATTACHED MAP

USGS Quad: Boston North

26.457 acres

UTM's A-19/326420/4693830
 B-19/326340/4693800
 C-19/326280/4693640
 D-19/326070/4693600
 E-19/326025/4693800
 F-19/326020/4693970
 G-19/326100/4694120 _____ H-19/326180/4694100

Recorded by Therese Alduino

Organization Cambridge Historical Co.

Date 1985

(Staple additional sheets here)

INVENTORY FORM CONTINUATION SHEET

MASSACHUSETTS HISTORICAL COMMISSION
Office of the Secretary, Boston

Community:

Cambridge Mass.
Cambridge MRA

Form No:

M.C.
I 7

Property Name: Shady Hill N.R.D.

Indicate each item on inventory form which is being continued below.

Criteria For Evaluation

The Shady Hill National Register District is significant as the most homogenous grouping of Queen Anne and Colonial Revival houses in Cambridge. In addition to the architectural values represented by the various buildings and their architects, many of the houses were the homes of prominent Americans associated with Harvard University. Finally, the subdivision plan for the district was designed by the Olmsted firm. The area retains its integrity of location, design, setting, material, feeling and workmanship, and fulfills Criteria A, B, and C of the National Register of Historic Places. The Shady Hill National Register District was found to be significant under the themes of architecture, landscape architecture, community design, and education, as proposed by Dr. Cynthia Zaitzevsky to the Review Committee for the Study of Architecture of Harvard University and its Environs in Cambridge.

The Shady Hill district is a residential neighborhood composed of a curvilinear street pattern, the Olmsted/Eliot plan, and one cul-de-sac, Shady Hill Square. The single-family houses are substantial and well set back from the street. Maintenance and landscaping are excellent. Architecturally, the district features a predominance of Queen Anne and Colonial Revival style houses with a few distinguished earlier types along Kirkland Street. The two institutional complexes within the district, the American Academy and the World Religions Center, are so well sited as not to impose on the residential quality of the area.

Part of the district's distinctive character stems from its clearly defined boundaries. The area is bounded by the Cambridge/Somerville line along Beacon Street, Museum Street, Francis Street, the rear lot lines of 1-23 Francis Street, Kirkland Street, and the rear lot lines of Sedwick Road and 73-81 Kirkland Street. To the west the district abuts the institutional complex of Harvard's North Yard, and to the east, the commercial strip along Beacon Street. The district is also much homogenous than the architecturally and economically mixed neighborhoods to the north and south.

Staple to Inventory form at bottom

ARCHITECTURAL SIGNIFICANCE of area. (Describe physical setting, general character, and architecturally significant structures).

The Shady Hill district is an area of remarkable homogeneity characterized by tree-lined streets, expansive homes and fairly large lots. Comprised of mostly Queen Anne and Colonial Revival houses, with a few earlier estates near Kirkland St., the district gives the feeling of an upper-middle-class suburban oasis, a few blocks from Harvard Square.

Number 61 Kirkland Street is one of the few Mansard houses in the Shady Hill district. Designed in 1858 by Charles W. Eliot along with an adjoining house (Number 59, since demolished) for his father, Samuel A. Eliot, it is a two story brick house rising from a cut granite and rubble stone foundation to a slate mansard roof with wide segmentally pedimented dormers with Greek Revival pilaster strips. Additionally, the house features a classical cornice with wood dentils and modillions; brick segmentally arched windows with 6/6 sash and triple belt courses, the upper of which forms the sills for the second story windows; and corbelled chimneys. The facade (east) is symmetrical with an enclosed center entry porch flanked by narrow, paired segmental arched windows; three segmental arched windows light the second story. The side elevations are symmetrical.

HISTORICAL SIGNIFICANCE of area. (Explain development of area, what caused it, and how it affected community; be specific). Continued

Although there are scattered buildings of earlier date along Kirkland Street, the bulk of the Shady Hill neighborhood was not subdivided until the 1880's. By this time, the land was in two parcels: the Frost Estate along what is now Francis Avenue and the Norton Estate on the remainder of the property. The house lots in both sections were sold subject to stringent deed restrictions.

The Norton Estate passed to Charles Eliot Norton, later Harvard's first Professor of Fine Arts, in 1853. Fifteen years later, Norton asked his friend, Frederick Law Olmsted to make a plan for the area. Norton wished to subdivide about two-thirds of the property along Kirkland Street, to preserve his own house with approximately ten acres of surrounding land, and to donate to the public a landscaped parkway strip between Kirkland and Jarvis Streets. The logical continuation for the parkway would have been through Harvard property to the Common. This imaginative plan was never executed.

In 1887-1888, Charles Eliot designed another subdivision plan for Shady Hill, the lower part of which, near Kirkland Street, was carried out. The plan included a typical, Olmsted/Eliot type of curvilinear street pattern. The deed restrictions required substantial, single-family houses with large set-backs. The first houses were built in 1889, and the neighborhood was virtually built up

BIBLIOGRAPHY and/or REFERENCES

Continued

SEE ATTACHED BIBLIOGRAPHY

INVENTORY FORM CONTINUATION SHEET

MASSACHUSETTS HISTORICAL COMMISSION
Office of the Secretary, Boston

Community: Cambridge Mass. Cambridge MRA	Form No: M.C. I 7
Property Name: Shady Hill	

Indicate each item on inventory form which is being continued below.

Architectural Significance con't.

metrical and obviously secondary; the rear elevation in blank and stuccoed following the demolition of 59 Kirkland Street.

Following close on the heels of the Loring-Pierce House, the Charles W. Eliot House is an important early example of the Mansard style, unusual for its brick construction. Following its 1848 introduction to Boston, the Mansard style spread slowly to Cambridge in the 1850's, where it appeared in gradually increasing numbers through the 1860's and 70's. Few examples from the 1850's remain.

Another early example is the Ebenezer Francis House at 1 Francis Avenue. Built in 1836 by Harvard College carpenter Ebenezer Francis for himself, it is a traditional (Georgian-Federal) five bay, center entry plan with paired end wall chimneys. Sheathed in clapboards, it rises two and one half stories from a granite foundation to a slate covered, gable roof. It is extended to the north by a two-story three bay gable roof ell which is probably a later addition. Contemporary (Greek Revival) features include wide cornerboards and frieze, as well as gable ends treated as pediments. Windows contain 6/6 sash in simple frames; second story windows are set directly below the frieze. The entry, framed by sidelights and an elliptical fan and protected by a porch on slender paired columns, results from a 20th century Neo-Federal remodeling. The Francis House is significant as a well-conceived Neo-Federal overlay on a traditional Greek Revival style house. As such, the Francis House ties together its early associations with Professors' Row and those of its Colonial Revival style neighbors.

Perhaps the most characteristic house of the Shady Hill neighborhood is the Hyatt-Durant House at 19 Francis Avenue, which combines the gambrel roof of early colonial and the decorative detail of late Georgian with the strong plastic forms of Queen Anne. Designed in 1889 by C.H. McClare, notable decorative features on this house include the Palladian window in the gambrel with its ornamented mastic panel, the dentil cornice, the balustrated entrance porch supported by Tuscan columns, the swags over various window openings, and the leaded window at the stair landing on the north facade. This building was considered significant enough to be recorded by the Historic American Building Survey.

A more unusual house is the Francis J. Child House at 67 Kirkland Street. Built in 1861, the house is architecturally significant for its interesting combination of the Mansard style with the applied gothic decoration one might find in an A.J. Downing cottage. The Child House is composed of two mansard roofed blocks, each one symmetrically arranged but both combined to form an asymmetrical massing. This arrangement is somewhat unusual for the early 1860's which tended

Staple to Inventory form at bottom.

cont.

INVENTORY FORM CONTINUATION SHEET

MASSACHUSETTS HISTORICAL COMMISSION
Office of the Secretary, Boston

Community: Cambridge Mass. Cambridge NRA	Form No: M.C. I 7
Property Name: Shady Hill	

Indicate each item on inventory form which is being continued below.

Architectural Significance con't.

to favor more formal organizations. The lower mansard roof is distinguished by hexagonal slates. Downing's theories on cottage design, publicized in Cottage Residences (1842) and The Architecture of Country Houses (1850), incorporated the picturesque aesthetic characterized by elements of irregularity, roughness and variety. Also important were the integration of the house with its natural setting and the use of ornament to animate the cottage facade. Elements of this design influence seen at 67 Kirkland Street include the jigsaw-cut cornice boards, the veranda as an important means of linking the house to its surroundings and the tall chimney stacks and slender porch posts which enliven the facade.

Other houses of note within the Shady Hill district include 9 Francis Avenue (1886), a late example of the Mansard style; 14 Francis Avenue, a shingle-style Colonial Revival house, designed in 1895 by William Rotch Ware; 44 Francis Avenue, a large brick, Neo-Georgian house (1913, Derby & Robinson); 105 Irving (1890, Longfellow, Alden and Harlow); 110 Irving (1889, W.R. Emerson) and 114 Irving (1911-1912, Gustav Stickley), a rare example of the Craftsman style in Cambridge. Also, 1 Bryant Street (1911, A.W. Jackson) a Stucco-style house; another house by William Ralph Emerson at 7 Scott Street (1891); and an unusual example of the Neo-Federal in brick at 17 Farrar Street, designed in 1897 by M.N. Stearns. Of more recent date are the Center for the Study of World Religions (42 Francis St., 1959, Sert, Jackson and Gourley) and the American Academy of Arts and Sciences on the site of the former Norton estate (1980, Kallman, Mckinnell and Wood) at 136 Irving Street. Through the use of a residential facade and a generous amount of land respectively, these institutional buildings help to retain the residential character of the neighborhood.

In all, Shady Hill presents an extraordinary grouping of well-designed houses, principally of Queen Anne and Colonial Revival styles. As such, it is significant under Criterion C.

There are a number of outstanding buildings in the district that must be counted as non-contributing for reasons of age alone. These include the Josep Lluís Sert House at 64 Francis Street (1957), a fine, inward-looking modern design by the architect; the Center for the Study of World Religions at 42 Francis Street (1959), and important Sert-designed institutional building; and the American Academy of Arts and Sciences at 136 Irving Street (1980), the home this important organization. These properties should be evaluated for their significance once they are old enough to qualify for the National Register.

Staple to Inventory form at bottom.

INVENTORY FORM CONTINUATION SHEET

MASSACHUSETTS HISTORICAL COMMISSION
Office of the Secretary, Boston

Community: Cambridge Mass. Cambridge MRA	Form No: M.C. I 7
Property Name: Shady Hill	

Indicate each item on inventory form which is being continued below.

Architectural Significance con't.

to favor more formal organizations. The lower mansard roof is distinguished by hexagonal slates. Downing's theories on cottage design, publicized in Cottage Residences (1842) and The Architecture of Country Houses (1850), incorporated the picturesque aesthetic characterized by elements of irregularity, roughness and variety. Also important were the integration of the house with its natural setting and the use of ornament to animate the cottage facade. Elements of this design influence seen at 67 Kirkland Street include the jigsaw-cut cornice boards, the veranda as an important means of linking the house to its surroundings and the tall chimney stacks and slender porch posts which enliven the facade.

Other houses of note within the Shady Hill district include 9 Francis Avenue (1886), a late example of the Mansard style; 14 Francis Avenue, a shingle-style Colonial Revival house, designed in 1895 by William Rotch Ware; 44 Francis Avenue, a large brick, Neo-Georgian house (1913, Derby & Robinson); 105 Irving (1890, Longfellow, Alden and Harlow); 110 Irving (1889, W.R. Emerson) and 114 Irving (1911-1912, Gustav Stickley), a rare example of the Craftsman style in Cambridge. Also, 1 Bryant Street (1911, A.W. Jackson) a Stucco-style house; another house by William Ralph Emerson at 7 Scott Street (1891); and an unusual example of the Neo-Federal in brick at 17 Farrar Street, designed in 1897 by M.N. Stearns. Of more recent date are the Center for the Study of World Religions (42 Francis St., 1959, Sert, Jackson and Gourley) and the American Academy of Arts and Sciences on the site of the former Norton estate (1980, Kallman, Mckinnell and Wood) at 136 Irving Street. Through the use of a residential facade and a generous amount of land respectively, these institutional buildings help to retain the residential character of the neighborhood.

In all, Shady Hill presents an extraordinary grouping of well-designed houses, principally of Queen Anne and Colonial Revival styles. As such, it is significant under Criterion C.

There are a number of outstanding buildings in the district that must be counted as non-contributing for reasons of age alone. These include the Josep Eluis Sert House at 64 Francis Street (1957), a fine, inward-looking modern design by the architect; the Center for the Study of World Religions at 42 Francis Street (1959), and important Sert-designed institutional building; and the American Academy of Arts and Sciences at 136 Irving Street (1980), the home this important organization. These properties should be evaluated for their significance once they are old enough to qualify for the National Register.

See also the original form

Staple to Inventory form at bottom.

INVENTORY FORM CONTINUATION SHEET

MASSACHUSETTS HISTORICAL COMMISSION
Office of the Secretary, Boston

Community:	Form No:
Cambridge Mass. Cambridge MRA	M.C. I 7
Property Name: Shady Hill	

Indicate each item on inventory form which is being continued below.

Historical Significance con't.

twenty years later, making this district a remarkable homogenous grouping of Queen Anne and Colonial Revival style houses. The first area to be built up within the Eliot subdivision was Irving Street, the last, Shady Hill Square, a little development off Holden Street that was part of the Shady Hill estate until 1915, when it was laid out into two single and five double family houses surrounding a garden-like square. Residential construction in the district continued through the 1920s and 1930s, primarily in the Colonial Revival style

Buildings of historical significance include the William James House at 95 Irving Street (1889, W.R. Emerson). William James, brother of the author Henry James, was a famous Harvard philosopher. The James family occupied the residence from the time it was commissioned by Pr. James in 1889 until 1968 when descendant John S.R. James deeded the land and house to Harvard College. In addition, the William James House is significant for its associations with its architect, William R. Emerson. In his book The Shingle Style and the Stick Style, Vincent Scully quotes an obituary for Emerson as follows:

Mr. Emerson was a native product of New England, delighting in ingenious contrivances and original inventions, filled with enthusiasms for whatever was spontaneous and natural, and abhorring conventions of any sort. He was the creator of the shingle country house of the New England coast... and taught his generation how to use local materials without apology, but rather pride in their rough and homespun character. (p. 111).

The William James House, with its gambrel roof, brown shingles and smallish windows with small panes, derived from seventeenth and early eighteenth century prototypes was a notable enough example of Emerson's interpretation of the Colonial Revival style to be documented by the Historic American Building Survey.

At 104 Irving Street is the childhood home of poet e. e. cummings. The house was commissioned by his father, Professor Edward Cummings, an educator at Harvard as well as a pastor. e. e. cummings was born in the house in 1894 and lived there until he graduated from Harvard College in 1911. cummings received his Bachelor's and Master's degrees from Harvard. In 1917 he moved to New York City where he resided at 21 E. 15th Street.

cummings speaks of the house in a book entitled six nonlectures, which consists of talks originally delivered at Harvard as the Charles Eliot Norton Lectures of 1952-53. He says, "My own home faced the Cambridge world as a finely and solidly constructed mansion, preceded by a large oval lawn and ringed with an imposing white-pine hedge."

Staple to Inventory form at bottom

Continued

INVENTORY FORM CONTINUATION SHEET

MASSACHUSETTS HISTORICAL COMMISSION
Office of the Secretary, Boston

Community:	Form No:
Cambridge Mass.	M.C.
Cambridge MRA	I 7
Property Name: Shady Hill	

Indicate each item on inventory form which is being continued below.

Historical Significance con't.

And later, "One of the many wonderful things about a home is that it can be as lively as you please without ever becoming public. The big Cambridge house was in this respect, as in all other respects, a true home." cummings lived in the house with his parents, his sister, two successive grandmothers, an aunt, an uncle, and three to four servants. From six nonlectures, it is evident that the house was of great emotional significance to the poet. Although the former Cummings summer home in Silver Lake, New Hampshire, is preserved as an historic site, 104 Irving Street is significant as e. e. cummings' principal home while he lived in Massachusetts.

Two earlier houses, the Ebenezer Francis House at 1 Francis Avenue (1836, Ebenezer Francis) and the Charles W. Eliot House, 61 Kirkland Street (1858, Charles W. Eliot) are significant for their associations with Professors' Row. The western end of Kirkland Street was known as Professors' Row as early as 1830 on account of the number of Harvard professors who made their homes in the area. Charles Eliot was president of Harvard from 1869-1909, and is credited with transforming a college into a world reknown university.

For its importance in understanding the development of Mid Cambridge during the 1890's and 1900's , particularly in light of its Olmsted/Eliot subdivision plan, Shady Hill meets Criterion A. In addition, for its associations with such people of national prominence as e. e. cummings, William James and Charles Eliot and those of more regional distinction, such as William R. Emerson, Shady Hill meets Criterion B.

Staple to Inventory form at bottom

MASSACHUSETTS HISTORICAL COMMISSION
Office of the Secretary, Boston

Cambridge Mass.
Cambridge MA

M.C.
I 7

Property Name: Shady Hill N.R.D.

Indicate each item on inventory form which is being continued below.

Bibliography/References

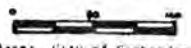
- Cambridge Historical Commission. Survey of Architectural History
in Cambridge: Volume I, East Cambridge (1965), out of print.
Volume II, Mid Cambridge (1967), Cambridge, MA
Volume III, Cambridgeport (1971), Cambridge, MA
Volume IV, Old Cambridge (1973), Cambridge, MA
Volume V, Northwest Cambridge (1977), Cambridge, MA
- Cambridge Historical Society, Proceedings (1906-Present), Cambridge, MA.
- D.A.R., Winthrop Chapter, An Historical Guide to Cambridge (1907),
Cambridge, MA.
- Gillman, A. (ed.), Cambridge of Eighteen Hundred and Ninety-Six (1896),
Cambridge, MA.
- Paige, L.R., History of Cambridge (1877), Boston, MA.; Supplement
(1930), Boston, MA.
- Rand, C., Cambridge, U.S.A. (1964), New York, NY.
- Rettig, R.B., Guide to Cambridge Architecture (1969), Cambridge, MA.
- Stillman, W.J. (ed.), Poetic Localities of Cambridge (1876),
Cambridge, MA.
- Woods, R.A., and Kennedy, A.J. (Warner, ed.), Zone of Emergence
(1962), Cambridge, MA.
- Zaitzevsky, C., with the advice of the Review Committee members,
The Harvard University Study of Historic and Architectural
Properties in the Environs of Cambridge, (April 1983-December
1984), Cambridge, MA.

Staple to Inventory form at bottom



Shady Hill Historic District
Cambridge, Mass. District
Cambridge MRA
* Non contributing

SHADY HILL N.R.D.
Base: City of Cambridge Assessor's Plans
January 1983



MAP #	HISTORIC NAME	STREET ADDRESS	DATE OF CONSTRUCTION	STYLE*	N/NC*
147,36	NA	1 Bryant St.	1911	CR	C
147,35	NA	5 Bryant St.	1916	CR	C
147,24	NA	7 Bryant St.	1915	CR,NT	C
146,82	NA	20-24 Bryant St.	1916	stucco	C
147,61	NA	21 Bryant St.	1932	NT	C
146A,105	NA	2-4 Farrar St.	1927	CR,NG	C
146A,27	NA	9 Farrar St.	1890	CR	C
146A,26	NA	15 Farrar St.	1898	CR	C
146A,125	NA	16 Farrar St.	1931	CR	C
146A,129	NA	17 Farrar St.	1897	CR	C
146A,98	NA	18-20 Farrar St.	1923	CR	C
146A,121	NA	22 Farrar St.	1928	CR	C
146A,119	NA	26 Farrar St.	1928	CR	C
145,36	Ebenezer Francis House	1 Francis Avenue	1836	GR	C
146,86	NA	6 Francis Avenue	1940	CR	NC
145,46	NA	7 Francis Avenue	1894	CR	C
146,88	NA	8 Francis Avenue	1940	CR	NC
145,16	NA	9 Francis Avenue	1875?	MS	C
146,89	NA	10 Francis Avenue	1894	QA,CR	C
145,15	NA	11 Francis Avenue	1894	CR	C
146,90	NA	12-14 Francis Avenue	1895	CR	C

DISTRICT DATA SHEET

MAP #	HISTORIC NAME	STREET ADDRESS	DATE OF CONSTRUCTION	STYLE*	C/NC*
146,91	NA	16 Francis Avenue	1906	CR	C
145,14	Wm. M. Davis House	17 Francis Avenue	1896	CR	C
146,52	NA	18 Francis Avenue	1911	CR	C
145,42	Hyatt-Durant House	19 Francis Avenue	1889	QA,CR	C
145,43	NA	21 Francis Avenue	1925	CR	C
146,53	NA	22 Francis Avenue	1912	NT	C
145,40	NA	23 Francis Avenue	1902	QA,NT	C
146,49	NA	24 Francis Avenue	1906	CR	C
146,48	NA	30 Francis Avenue	1905	CR	C
146,42	NA	32 Francis Avenue	1903	QA,CR	C
147,54,46	World Religions Ctr.	42 Francis Avenue	1959	MD	NC
147,47	NA	44 Francis Avenue	1913	CR,NG	C
147,12	NA	53 Francis Avenue	1913	CR	C
147,56	NA	56 Francis Avenue	1914	CR,NG	C
147,30	NA	57 Francis Avenue	1913	stucco	C
147,31	NA	59 Francis Avenue	1916	CR	C
147,55	NA	60 Francis Avenue	1961	MD	NC
147,29	NA	63 Francis Avenue	1913	NT	C
147,50	Josep Lluís Sert House	64 Francis Avenue	1957	MD	NC
147,26	NA	65 Francis Avenue	1916	CR	C

DISTRICT DATA SHEET

MAP #	HISTORIC NAME	STREET ADDRESS	DATE OF CONSTRUCTION	STYLE *	C/H/C
147,28	NA	67 Francis Avenue	1926	CR	C
147,33	NA	68 Francis Avenue	1921	CR	C
147,59	NA	70 Francis Avenue	1879/1912	CR	C
147,37	NA	73 Francis Avenue	1926	CR,NG,NT	C
147,38	NA	75-77 Francis Avenue	1925	CR,NG	C
146A,122	NA	11 Holden St.	1928	CR	C
146A,130	NA	41 Holden St.	1840	GO	C
146A,117	NA	45 Holden St.	1928	CR	C
146A,106	NA	80-82 Irving St.	1927	CR,NG	C
146,79	NA	81 Irving St.	1916	CR	C
146A,107	NA	84-86 Irving St.	1927	CR,NG	C
146,78	NA	89 Irving St.	1916	CR	C
146,81	William James House	95 Irving St.	1889	CR	C
146,11	NA	99 Irving St.	1889	CR	C
146,10	NA	103-103A Irving St.	1889	CR	C
146,14	e e cumrings House	104 Irving St.	1893	QA,CR	C
146,9	Van Dael--DeSola Pool House	105 Irving St.	1890	CR	C
146,8	NA	107 Irving St.	1891	CR	C
146,7	NA	109 Irving St.	1893	CR	C
146,15	NA	110 Irving St.	1889	QA	C

DISTRICT DATA SHEET

MAP #	HISTORIC NAME	STREET ADDRESS	DATE OF CONSTRUCTION	STYLE *	C/NC*
146,54	NA	114 Irving St.	1911	none	C
147,57	NA	133 Irving St.	1963	MD	NC
147,41	American Academy of Arts and Sciences	136 Irving St.	1980	MD	NC
147,39	NA	138 Irving St.	1912	CR	C
146,87	NA	49 Kirkland St.	1886	QA,CR	C
146A,108	NA	55 Kirkland St.	1927	CR	C
146A,109	NA	57-59 Kirkland St.	1927	CR	C
146A,110	Charles W. Eliot House	61 Kirkland St.	1858	MS	C
146A,37	Frances J. Child House	67 Kirkland St.	1861	MS	C
146A,28	NA	2 Scott St.	1889	CR	C
146,20	NA	7 Scott St.	1891	CR	C
146A,29	NA	8 Scott St.	1889	QA,CR	C
146,62	NA	11 Scott St.	1893	QA,CR	C
146A,63	NA	12 Scott St.	1894	CR	C
146A,118	NA	14 Scott St.	1927	CR	C
146A,115	NA	18 Scott St.	1928	CR	C
146A,65	NA	1 Shady Hill Sq.	1915	stucco	C
146A,141,142	NA	2-3 Shady Hill Square	1915	stucco	C
146A,67,72	NA	4-5 Shady Hill Sq.	1915	stucco	C
146A,137	NA	6-7 Shady Hill Sq.	1915	stucco	C

MAP #	HISTORIC NAME	STREET ADDRESS	DATE OF CONSTRUCTION	STYLE*	C/NC**
146A,139,140	NA	8-9 Shady Hill Square	1915	stucco	C
146A,143,144	NA	10-11 Shady Hill Square	1915	stucco	C
146A,71	NA	12 Shady Hill Square	1915	stucco	C

*GR=Greek Revival; MS=Mansard; GO=Gothic Revival; QA=Queen Anne; CR=Colonial Revival; NG=Neo-Georgian;
NT=Neo-Tudor; MD=Modern.

**C=Contributing; NC=Non-Contributing.

United States Department of the Interior
National Park Service

National Register of Historic Places
Inventory—Nomination Form

For NPS use only
received
date entered

Continuation sheet

Item number

Page

Multiple Resource Area
Thematic Group

Name Cambridge Multiple Resource Area
State MASSACHUSETTS

Nomination/Type of Review

Date/Signature

181. Memorial Drive Apartments Hist. Dist.

Entered in the
National Register

for Keeper Alvina Byers 5/19/86

Attest

182. Montrose, The

Entered in the
National Register

for Keeper Alvina Byers 5/19/86

Attest

183. Peabody Court Apartments

Entered in the
National Register

for Keeper Alvina Byers 5/19/86

Attest

184. Shady Hill Historic District

Substantive Review

for Keeper Patrick Andrews 5/19/86
Attest Beth L. Savage 5-19-86

Attest

185. Stanstead, The

Entered in the
National Register

for Keeper Alvina Byers 5/19/86

Attest

186. Stickney-Shepard House

Entered in the
National Register

for Keeper Alvina Byers 5/19/86

Attest

187. Warren, H. Langford, House

Entered in the
National Register

for Keeper Alvina Byers 5/19/86

Attest

188. Withey, S. B., House

Entered in the
National Register

for Keeper Alvina Byers 5/19/86

Attest

189. Wood, J. A., House

Entered in the
National Register

for Keeper Alvina Byers 5/19/86

Attest

190. ~~Biological~~ Laboratory

Substantive Review

for Keeper automatically
DOE/owner obj. 1/26/87

Keeper

Attest

DOE/OWNER OBJECTION

Determined Eligible

LANDSCAPE
86001680

WASO Form - 177
("R" June 1984)

UNITED STATES DEPARTMENT OF THE INTERIOR
NATIONAL PARK SERVICE

NATIONAL REGISTER OF HISTORIC PLACES
EVALUATION/RETURN SHEET

Shady Hill Historic District (Cambridge MRA)
Middlesex County
MASSACHUSETTS

Substantive Review

APR 4 1986

Working No. _____
Fed. Reg. Date: _____
Date Due: 5/1/86 — 5/19/86
Action: ACCEPT 5-19-86
 RETURN _____
 REJECT _____
Federal Agency: _____

- resubmission
- nomination by person or local government
- owner objection
- appeal

Substantive Review: sample request appeal NR decision

Reviewer's comments:

*architecturally significant
historically important for association w/ locally
signif. individuals*

Recom./Criteria accept
Reviewer Patricia Anders
Discipline Historien
Date 5/15/86
_____ see continuation sheet

Nomination returned for: _____ technical corrections cited below
_____ substantive reasons discussed below

1. Name

2. Location

3. Classification

Category	Ownership	Status	Present Use
	Public Acquisition	Accessible	

4. Owner of Property

5. Location of Legal Description

6. Representation in Existing Surveys

Has this property been determined eligible? yes no

7. Description

Condition	Check one	Check one
<input type="checkbox"/> excellent	<input type="checkbox"/> unaltered	<input type="checkbox"/> original site
<input type="checkbox"/> good	<input type="checkbox"/> altered	<input type="checkbox"/> moved date _____
<input type="checkbox"/> fair	<input type="checkbox"/> deteriorated	
	<input type="checkbox"/> ruins	
	<input type="checkbox"/> unexposed	

Describe the present and original (if known) physical appearance

- summary paragraph
- completeness
- clarity
- alterations/integrity
- dates
- boundary selection

8. Significance

Period _____ Areas of Significance—Check and justify below

Specific dates _____ Builder/Architect _____

Statement of Significance (*in one paragraph*)

- summary paragraph
- completeness
- clarity
- applicable criteria
- justification of areas checked
- relating significance to the resource
- context
- relationship of integrity to significance
- justification of exception
- other

9. Major Bibliographical References

10. Geographical Data

Acreage of nominated property _____

Quadrangle name _____

UTM References _____

Verbal boundary description and justification _____

11. Form Prepared By

12. State Historic Preservation Officer Certification

The evaluated significance of this property within the state is:

____ national ____ state ____ local

State Historic Preservation Officer signature

title _____ date _____

13. Other

- Maps
- Photographs
- Other

Questions concerning this nomination may be directed to _____

Signed _____ Date _____ Phone: _____



Shady Hill N.R.D.

Cambridge MA. Ma

44 Francis Avenue

52-2



Shady Hill N.R.D.

Cambridge MA, Ma

95 Irving Street

52-11



Shady Hill N.R.D.

Francis, Eborzo, Hesse

1 Francis Avenue 77-21

Cambridge MA, Ma



Shady Hill N.R.D.

Hyatt-Durant Hall

19 Francis Avenue

77-27

Cambridge MRA, Ma

Please refer to the map in the
Multiple Property Cover Sheet
for this property

Multiple Property Cover Sheet Reference Number: 64000275

Shady Hill HD

2
-yesterday

file NR
(Camb MRA)

2326 20th Street, N.W.
Washington, D.C. 20009

January 9, 1986

RECEIVED

JAN 13 1986

MASS. HIST. COMM.

Ms. Valerie A. Talmage
Executive Director
State Historic Preservation Officer
Massachusetts Historical Commission
80 Boylston Street
Boston, MA. 02116

Dear Ms. Talmage:

By this letter I wish formally to register my objection to the designation of a Shady Hill Historic District.

I am the sole owner of the property at 1 Bryant Street (147.36).

I trust that this notarized letter satisfies all of the requirements for such an objection, pursuant to the instructions in your form letter to me, dated December 10, 1985.

Douglas H. Ginsburg

Mary Ann Berry
Notary



HARVARD LAW SCHOOL

CAMBRIDGE · MASSACHUSETTS · 02138

✓02
11/5
Shady Hill #10

January 24, 1986

Ms. Valerie A. Talmage
Executive Director
Massachusetts Historical Commission
The Commonwealth of Massachusetts
80 Boylston Street
Boston, Massachusetts 02116

Dear Ms. Talmage:

I am the sole owner of the house located at 81 Irving Street, Cambridge, Massachusetts. I wish formally to object to my house being listed in the National Register of Historic Places.

Sincerely yours,

Martha A. Field
Professor of Law

Commonwealth of Massachusetts
Middlesex, ss.

Then personally appeared the above-named Martha A. Field and signed the above in my presence.

Notary Public

My Commission expires: 2/2/91

105 Irving Street
Cambridge, Massachusetts 02138

Shady Hill HD
52

MKS please
note on BDS

RECEIVED

FEB 1986

MASS. HIST. COM. HOUSE

The Massachusetts Historical Comm.
80 Boylston St.
Boston, Mass. 02116

that
house
is — Pool
House

Dear Miss Zimmerman,

I am willing, and honored,
to have my property at 105 Irving St.
Cambridge, Massachusetts listed
in the National Register as part of
The Shady Hill Historic District.

I would appreciate very
much if the house could be
registered as the Professor
ITHIEL DE SOLA POOL house. My late
husband was a public figure,
internationally acclaimed (see
WHOS WHO IN AMERICA & WHOS WHO IN
THE WORLD) a professor of Political
Science at M.I.T., the author of
many books, several prize winning.
We have lived in the house
since 1959, longer than either
of the 2 former owners. If you
would like further documentation
I shall be pleased to give it.

January 31, 1986

Sincerely,
Grandma Kenzie Pool
(Mrs. Ithiel de Sola Pool)

HARVARD UNIVERSITY

ROBERT H. SCOTT
VICE PRESIDENT FOR ADMINISTRATION

MASSACHUSETTS HALL
CAMBRIDGE, MASSACHUSETTS 02138
617-495-4374

June 11, 1986

Ms. Carol Shull, Chief of Registration
National Park Service
Department of Interior
P.O. Box 37127
Washington, D. C. 20013-7127

Dear Ms. Shull,

The Massachusetts Historical Commission has asked us to notify you concerning the status of objections we have filed for the inclusion of Harvard-owned buildings in the Cambridge Multiple Resource Area nomination to the National Register.

On behalf of the President and Fellows of Harvard College, I withdraw previous objections filed for the following National Register nominations:

- 9 Kirkland Place (included in the Kirkland Place National Register District) *Deleted 5/19/86*
- ✓ Harvard Houses National Register District
- ✓ 1 Francis Avenue (included in the Shady Hill National Register District) *Deleted 5/19/86*
- ✓ 16 Prescott Street (individual building nomination)
- ✓ University Museum, 11-25 Divinity Avenue (individual)
- ✓ Divinity Hall, 12 Divinity Avenue (individual)
- ✓ Sears Tower, 60 Garden Street (individual)
- ✓ 21 Kirkland Street (individual)
- ✓ 34 Kirkland Street (individual)
- ✓ 38 Kirkland Street (individual)

Harvard University no longer owns the properties at 19 Francis Avenue and 14-16 Farwell Place, which we did own and did oppose at the time of proposed nomination.

I also withdraw my notarized statement of February 11, 1986, objecting to the inclusion of the Harvard Yard District (including all buildings, gates and other structures as described on the nomination


JUN 17 1986

Ms. Carol Shull
June 11, 1986
Page 2

form). This nomination has been clarified by the Cambridge and Massachusetts Historical Commissions and is now acceptable to Harvard. Please note that this letter does not affect my separate notarized statement of the same date, objecting to inclusion of the Harvard University Graduate Center and the Biological Laboratory at 16 Divinity Avenue.

We look forward to cooperative and informative use of the National Register program.

Sincerely,



Robert H. Scott

RHS/mc
4.63

cc: Valerie A. Talmage, Massachusetts Historical Commission
Charles M. Sullivan, Cambridge Historical Commission

FORM B - BUILDING

MASSACHUSETTS HISTORICAL COMMISSION
Office of the Secretary, State House, Boston

In Area no. MID CAMB.	Form no. MC II B 3
--------------------------	--------------------------

2. Photo (3x3" or 3x5")
Staple to left side of form
Photo number 1097-20

1. Town Cambridge
Address 1 Francis Avenue
Name Ebenezer Francis House
Present use residential

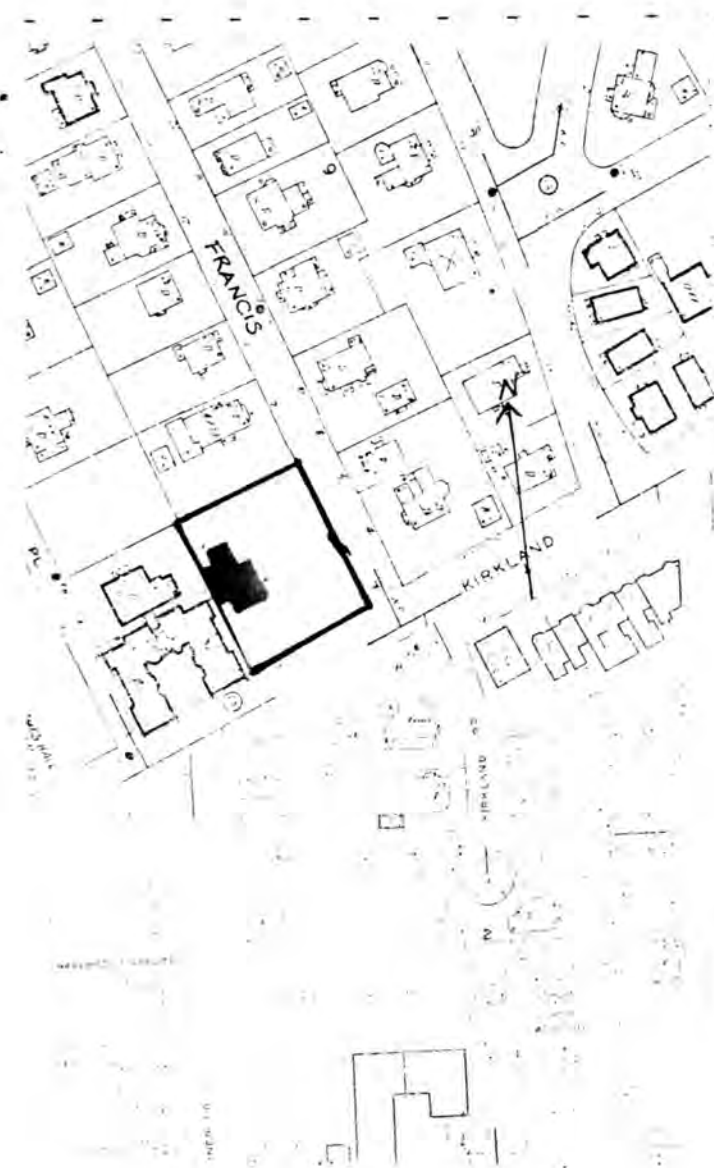
Present owner Harvard University

3. Description:
Date 1836
Source deed records
Style Greek Revival
Architect unknown
Exterior wall fabric wood
Outbuildings (describe) -----
Other features wide entablature
under eaves, pedimented gable facing
the street.
Altered Yes Date 1935
Moved No Date ----

5. Lot size:
One acre or less XX Over one acre ---
Approximate frontage 165'
Approximate distance of building from street
80'

6. Recorded by Robert Nylander
Organization Cambridge Historical Comm.
Date 1968

UTM - BOSTON NORTH
19/326100/4693630



ASSESSOR # 145-36

7. Original owner (if known) Ebenezer Francis

Original use residential

Subsequent uses (if any) and dates same

8. Themes (check as many as applicable)

Aboriginal	<input type="checkbox"/>	Conservation	<input type="checkbox"/>	Recreation	<input type="checkbox"/>
Agricultural	<input type="checkbox"/>	Education	<input type="checkbox"/>	Religion	<input type="checkbox"/>
Architectural	<input checked="" type="checkbox"/>	Exploration/ settlement	<input type="checkbox"/>	Science/ invention	<input type="checkbox"/>
The Arts	<input type="checkbox"/>	Industry	<input type="checkbox"/>	Social/ humanitarian	<input type="checkbox"/>
Commerce	<input type="checkbox"/>	Military	<input type="checkbox"/>	Transportation	<input type="checkbox"/>
Communication	<input type="checkbox"/>	Political	<input type="checkbox"/>		
Community development	<input type="checkbox"/>				

9. Historical significance (include explanation of themes checked above)

In 1836 Harvard College carpenter Ebenezer Francis bought part of the Gideon Frost estate and built the house at 1 Francis Avenue, where he lived until his death some fifty years later.

Basically a simple Greek Revival house, the Francis House was remodelled in the early twentieth century to resemble a Late Georgian building.

The Francis House embodies the distinctive characteristics of the Greek Revival style including wide corner boards and entablature, and gable ends treated as pediments, and so meets criterion C. It is coupled with a fine Neo-Federal entry and porch which complements the original design.

UBSI 100

10. Bibliography and/or references (such as local histories, deeds, assessor's records, early maps, etc.)

NATIONAL REGISTER OF HISTORIC PLACES

United States Department of the Interior
National Park Service

Substantive Review included in Shady Hill H.D.
EVALUATION / RETURN SHEET

DOE/OWNER OBJECTION

Property: Ebenezer Francis House
(Cambridge Multiple Resource Area)
State, County: MA - Middlesex
Federal Agency: _____

Working No. 11-14-80-2862
Fed. Reg. Date: _____
Date Due: 4/17/82
Action: ACCEPT
 RETURN 6-10-82
 REJECT _____

- resubmission
- nomination by person or local government
- owner objection
- appeal

photos
maps _____

Substantive Review: sample request appeal NR decision

Reviewer's comments:

This building is nominated under criterion c, yet there has been no local architectural context provided from which to evaluate the significance of the property, nor is there an explanation of what features this building possesses to make it distinctive enough, in comparison to other local examples of the Greek Revival style of architecture, to merit individual listing under criterion c.

Recom. / Criteria Returns
Reviewer Patrick Andrus
Discipline Historian
Date 6/10/82
 see continuation sheet

Nomination returned for: technical corrections cited below
 substantive reasons discussed below

1. Name

2. Location

3. Classification

Category	Ownership	Status	Present Use
	Public Acquisition	Accessible	

4. Owner of Property

5. Location of Legal Description

6. Representation in Existing Surveys

Has this property been determined eligible? yes no

7. Description

- | | | | |
|------------------------------------|---------------------------------------|------------------------------------|---|
| Condition | | Check one | Check one |
| <input type="checkbox"/> excellent | <input type="checkbox"/> deteriorated | <input type="checkbox"/> unaltered | <input type="checkbox"/> original site |
| <input type="checkbox"/> good | <input type="checkbox"/> ruins | <input type="checkbox"/> altered | <input type="checkbox"/> moved date _____ |
| <input type="checkbox"/> fair | <input type="checkbox"/> unexposed | | |

Describe the present and original (if known) physical appearance

- summary paragraph
- completeness
- clarity
- alterations/integrity
- dates
- boundary selection

8. Significance

Period _____ Areas of Significance—Check and justify below

Specific dates _____ Builder/Architect _____

Statement of Significance (in one paragraph)

- _____ summary paragraph
- _____ completeness
- _____ clarity
- _____ applicable criteria
- _____ justification of areas checked
- _____ relating significance to the resource
- _____ context
- _____ relationship of integrity to significance
- _____ justification of exception
- _____ other

9. Major Bibliographical References

10. Geographical Data

Address of nominated property _____

Quadrangle name _____

USIT Reference _____

Verbal boundary description and justification _____

11. Form Prepared By

12. State Historic Preservation Officer Certification

The evaluated significance of this property within the state is:

_____ national _____ state _____ local

State Historic Preservation Officer signature _____

Title _____ date _____

13. Other

- _____ Maps
- _____ Photographs
- _____ Other

Questions concerning this nomination may be directed to Patrick Andrews

Signed W.H. Brannan Date 6-10-82 ~~4-28-82~~ Phone: 202 272-3504

Comments for any item may be continued on an attached sheet

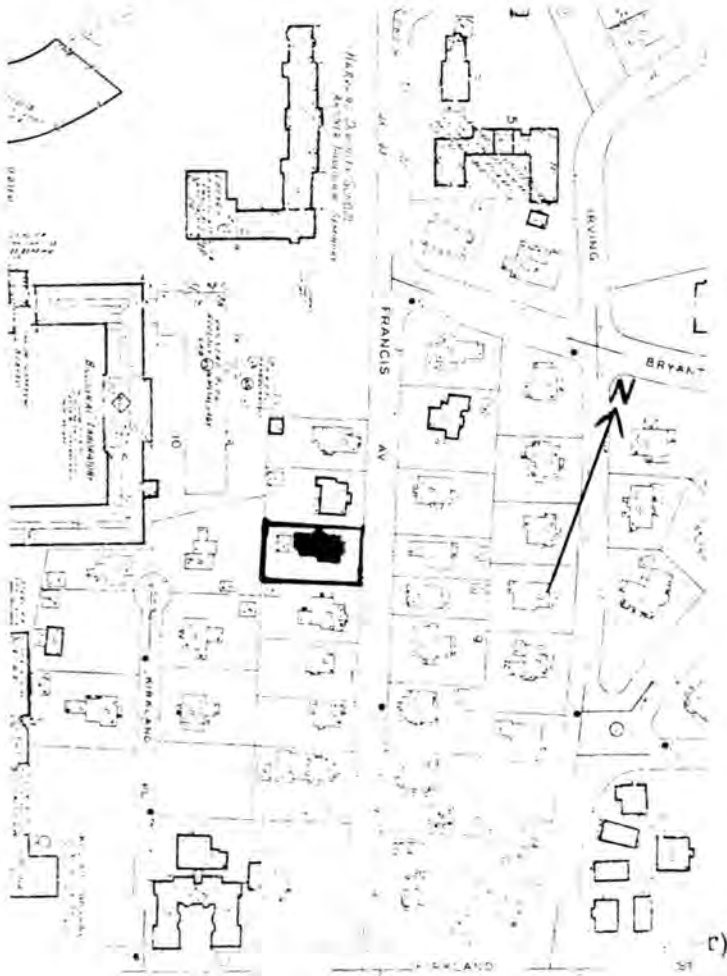
FORM B - BUILDING

MASSACHUSETTS HISTORICAL COMMISSION
Office of the Secretary, State House, Boston

In Area no. MID CAMB.	Form no. MC II B 31
--------------------------	---------------------------

2. Photo (3x3" or 3x5")
Staple to left side of form
Photo number 1109-15

4. Map. Draw sketch of building location
in relation to nearest cross streets and
other buildings. Indicate north.



ASSESSOR # 145-42

1. Town Cambridge

Address 19 Francis Ave.

Name Hyatt-Durant House

Present use residential

Present owner Harvard University

3. Description:

Date 1889

Sourced deed records

Style Queen Anne w/ Colonial detail

Architect C.H. McClare

Exterior wall fabric wood clapboards

Outbuildings (describe) -----

Other features Decorated mastic panels in gable with date "1889"; leaded windows for stair landing glass mosaic.

Altered converted into Date 1945
two-family house

Moved No Date ----

5. Lot size:

One acre or less XX Over one acre ---

Approximate frontage 78'

Approximate distance of building from street

30'

6. Recorded by Bainbridge Bunting - HABS

Organization Cambridge Historical Comm.

Date 1964

HABS - 1968

UTM - BOSTON NORTH
19/326050/4693720

7. Original owner (if known) Alpheus Hyatt

Original use residential

Subsequent uses (if any) and dates same

8. Themes (check as many as applicable)

Aboriginal	<input type="checkbox"/>	Conservation	<input type="checkbox"/>	Recreation	<input type="checkbox"/>
Agricultural	<input type="checkbox"/>	Education	<input checked="" type="checkbox"/>	Religion	<input type="checkbox"/>
Architectural	<input checked="" type="checkbox"/>	Exploration/ settlement	<input type="checkbox"/>	Science/ invention	<input type="checkbox"/>
The Arts	<input type="checkbox"/>	Industry	<input type="checkbox"/>	Social/ humanitarian	<input type="checkbox"/>
Commerce	<input type="checkbox"/>	Military	<input type="checkbox"/>	Transportation	<input type="checkbox"/>
Communication	<input type="checkbox"/>	Political	<input type="checkbox"/>		
Community development	<input type="checkbox"/>				

9. Historical significance (include explanation of themes checked above)

The Hyatt-Durant house is one of the best examples of Queen Anne architecture in Cambridge. It is especially noteworthy for its impressive Colonial Revival detail. Such detail is particularly evident on the dentil cornice. The house was the home for Prof. Alpheus Hyatt, who willed his collection of paintings and objects d'art to the Fogg Museum, Harvard University. The building was later owned by Prof Will B. Durant, a renowned historian of the 1920s.

The house embodies the distinctive characteristics of the Queen Anne style as enumerated above and so meets criterion C.

10. Bibliography and/or references (such as local histories, deeds, assessor's records, early maps, etc.)

NOV 14 1980

NATIONAL REGISTER OF HISTORIC PLACES

Substantive Review

United States Department of the Interior
National Park Service

EVALUATION / RETURN SHEET *filled in Shaddy Hill Hi*

DOE / OWNER OBJECTION

Property: Hyatt - Durant House
(Cambridge Multiple Resource Area)
State, County: MA - Middlesex
Federal Agency: _____

Working No. 11-14-80-2862
Fed. Reg. Date: _____
Date Due: 4/17/82
Action: ACCEPT
 RETURN 6-10-82
 REJECT

resubmission
 nomination by person or local government
 owner objection
 appeal

photos
maps _____

Substantive Review: sample request appeal NR decision

Reviewer's comments:

Returned per agreement by MA. SHPO to resubmit to State Review Board

Is this bldg. significant under criterion B for its association with the noted Historian Will Durant?
Did Durant live here (form says he owned the building) - if so, how long was he here? Was it during his productive period?

Recom. / Criteria Return
Reviewer Patrick Andrus
Discipline Historian
Date 6/10/82
 see continuation sheet

Nomination returned for: technical corrections cited below
 substantive reasons discussed below

1. Name

2. Location

3. Classification

Category Ownership Status Present Use
Public Acquisition Accessible

4. Owner of Property

5. Location of Legal Description

6. Representation in Existing Surveys

has this property been determined eligible? yes no

7. Description

Condition: excellent deteriorated good ruins fair unexposed
Check one: unaltered altered
Check one: original site moved date _____

Describe the present and original (if known) physical appearance

- _____ summary paragraph
- _____ completeness
- _____ clarity
- _____ alterations/integrity
- _____ dates
- _____ boundary selection

8. Significance

Period _____ Areas of Significance—Check and justify below

Specific dates _____ Builder/Architect _____

Statement of Significance (in one paragraph)

- _____ summary paragraph
- _____ completeness
- _____ clarity
- _____ applicable criteria
- _____ justification of areas checked
- _____ relating significance to the resource
- _____ context
- _____ relationship of integrity to significance
- _____ justification of exception
- _____ other

9. Major Bibliographical References

10. Geographical Data

Acres of nominated property _____

Quadrangle name _____

USGS References _____

Verbal boundary description and justification _____

11. Form Prepared By

12. State Historic Preservation Officer Certification

The evaluated significance of this property within the state is:

_____ national _____ state _____ local

State Historic Preservation Officer signature _____

Title _____ date _____

13. Other

- _____ Maps
- _____ Photographs
- _____ Other

Questions concerning this nomination may be directed to

Patrick Ardus

Signed W.H. Brackman

Date 6.10.82

Phone: 202 272-3504

Comments for any item may be continued on an attached sheet

FORM B - BUILDING

MASSACHUSETTS HISTORICAL COMMISSION
Office of the Secretary, State House, Boston

In Area no. Mid-Camb.	Form no. MC IIB22
--------------------------	-------------------------

1. Town Cambridge

Address 61 Kirkland Street

Name Charles W. Eliot House

Present use residential

Present owner Harvard University

3. Description:

Date 1858

Source deed records, maps

Style Mansard

Architect Charles W. Eliot

Exterior wall fabric brick/wood

Outbuildings (describe) -----

Other features at one time adjoining another house; classic Mansard style roofline, some Greek Revival detailing

Altered no Date -----

Moved No Date -----

5. Lot size:

One acre or less XX Over one acre ---

Approximate frontage 150 feet

Approximate distance of building from street
100 feet

6. Recorded by Antoinette Downing

Organization Cambridge Historical Comm.

Date 1967

UTM-BOSTON NORTH
19|326250|4693660

2. Photo (3x3" or 3x5")
Staple to left side of form
Photo number 1109-28



Assessor # 146A-110

7. Original owner (if known) Charles W. Eliot

Original use residential

Subsequent uses (if any) and dates same

8. Themes (check as many as applicable)

Aboriginal	_____	Conservation	_____	Recreation	_____
Agricultural	_____	Education	<u>XX</u>	Religion	_____
Architectural	<u>XX</u>	Exploration/ settlement	_____	Science/ invention	_____
The Arts	_____	Industry	_____	Social/ humanitarian	_____
Commerce	_____	Military	_____	Transportation	_____
Communication	_____	Political	_____		
Community development	<u>XX</u>				

9. Historical significance (include explanation of themes checked above)

Number 61 Kirkland Street is located in the Shady Hill neighborhood. The area is one of the most homogeneous residential groupings in the entire city and is characterized by tree-lined streets, expansive homes and fairly large lots. Number 61, a classic Mansard structure constructed in 1858, has a number of significant features including paired windows, wide dormers with Greek Revival pilaster strips, and a successful integration of wood dentils into an otherwise brick building.

The house was designed by Charles W. Eliot who also constructed an adjoining brick house (Number 59) for his father Samuel A. Eliot. Number 59 was later demolished. Charles Eliot occupied the house in 1858 and continued to live there after his appointment to the presidency of Harvard University in 1869.

The house meets criterion B due to its associations with Charles Elliot, one of Harvard's most illustrious presidents (1869-1909). It also embodies the distinctive characteristics of the Mansard style as enumerated above and so meets criterion C.

10. Bibliography and/or references (such as local histories, deeds, assessor's records, early maps, etc.)

NOV 17 1961

NATIONAL REGISTER OF HISTORIC PLACES

United States Department of the Interior
National Park Service

Substantive Review *Included in Shady Hill HD*
EVALUATION / RETURN SHEET

Property: Charles W. Eliot House
(Cambridge Multiple Resource Area)
State, County: MA - Middlesex
Federal Agency: _____

DOE/OWNER OBJECTION
Working No. 11-14-80-2862
Fed. Reg. Date: _____
Date Due: 4/17/82
Action: ACCEPT
 RETURN 6-10-82
 REJECT
photos 1
maps _____

resubmission
 nomination by person or local government
 owner objection
 appeal

Substantive Review: sample request appeal NR decision

Reviewer's comments:
The building is nominated under criteria B&C - yet there has been provided no local architectural context from which to evaluate the significance of the property, nor is there an explanation of what features this building possesses that make it distinctiv enough, in comparison to other local examples of the Mansard style of architecture, to merit individual listing under criterion C (in addition to criterion B).

Recom. / Criteria Return
Reviewer Patrick Andrus
Discipline Historian
Date 6/10/82
see continuation sheet

Nomination returned for: technical corrections cited below
 substantive reasons discussed below

1. Name

2. Location

3. Classification

Category Ownership Status Present Use
Public Acquisition Accessible

4. Owner of Property

5. Location of Legal Description

6. Representation in Existing Surveys

Has this property been determined eligible? yes no

7. Description

Condition: excellent deteriorated good ruins fair unspoiled
Check one: unaltered altered
Check one: original site moved date _____

Describe the present and original (if known) physical appearance

- _____ summary paragraph
- _____ completeness
- _____ clarity
- _____ alterations/integrity
- _____ dates
- _____ boundary selection

8. Significance

Period _____ Areas of Significance—Check and justify below

Specific dates _____ Builder/Architect _____

Statement of Significance (in one paragraph)

- _____ summary paragraph
- _____ completeness
- _____ clarity
- _____ applicable criteria
- _____ justification of areas checked
- _____ relating significance to the resource
- _____ context
- _____ relationship of integrity to significance
- _____ justification of exception
- _____ other

9. Major Bibliographical References

10. Geographical Data

Address of nominated property _____

Quadrangle name _____

USGS References _____

Verbal boundary description and justification _____

11. Form Prepared By

12. State Historic Preservation Officer Certification

The evaluated significance of this property within the state is:

_____ national _____ state _____ local

State Historic Preservation Officer signature _____

title _____ date _____

13. Other

- _____ Maps
- _____ Photographs
- _____ Other

Questions concerning this nomination may be directed to

Patrick Andrews

Signed W.H. Brannan

Date 6.10.82

Phone: 202 272-3504

Comments for any item may be continued on an attached sheet