

United States Department of the Interior  
National Park Service

RECEIVED 2280

SEP 25 2009

# NATIONAL REGISTER OF HISTORIC PLACES REGISTRATION FORM

## 1. Name of Property

historic name:

other names/site number: Glenwood-Vicklan Historic District

NAT. REGISTER OF HISTORIC PLACES  
NATIONAL PARK SERVICE

## 2. Location

street &amp; number: including Vicklan Street, Glenwood Circle, Edna Drive, and Chambers Street (east of the bayou)

city or town: Vicksburg

state: Mississippi

code: MS

county: Warren

code: 149

vicinity

zip code: 39180

## 3. State/Federal Agency Certification

As the designated authority under the National Historic Preservation Act of 1966, as amended, I hereby certify that this X nomination        request for determination of eligibility meets the documentation standards for registering properties in the National Register of Historic Places and meets the procedural and professional requirements set forth in 36 CFR Part 60. In my opinion, the property X meets        does not meet the National Register Criteria. I recommend that this property be considered significant        nationally        statewide X locally.        See continuation sheet for additional comments.)

Signature of certifying official

09.21.2009

Date

State Historic Preservation Officer

State or Federal agency and bureau

In my opinion, the property        meets        does not meet the National Register criteria. (       See continuation sheet for additional comments.)

Signature of commenting or other official

Date

State or Federal agency and bureau

## 4. National Park Service Certification

I, hereby certify that this property is:  
✓ entered in the National Register,  
       See continuation sheet.

       determined eligible for the  
National Register  
       See continuation sheet.

       determined not eligible for the  
National Register

       removed from the National Register

       other (explain):

Signature of the Keeper

Date of Action

11/03/2009

\_\_\_\_\_ other (explain): \_\_\_\_\_

---

**5. Classification**

---

**Ownership of Property:**  
private

**Number of Resources within Property:**  
(Do not include previously listed resources in the count)

**Category of Property:**  
district

Contributing	Noncontributing	
157	6	buildings
1		sites
		structures
		objects
158	6	Total

**Name of related multiple property listing**  
(Enter "N/A" if property is not part of a multiple property listing.)

**Number of contributing resources previously listed  
in the National Register**

Historic Resources of Vicksburg, Mississippi

0

---

**6. Function or Use**

---

**Historic Functions:** Domestic: single dwelling

**Current Functions:** Domestic: single dwelling

---

**7. Description**

---

**Architectural Classification(s):** Tudor Revival, Colonial Revival, Neoclassical, Craftsman, Minimal Traditional, Ranch, Contemporary, Split-level

**Materials:**

foundation: brick, concrete

roof: asphalt, asbestos

walls: brick, weatherboard, stucco, asbestos, vinyl

other

**Narrative Description:**

See Continuation Sheets

**United States Department of the Interior  
National Park Service**

**NATIONAL REGISTER OF HISTORIC PLACES  
CONTINUATION SHEET**

Section: 7

Page: 5

Glenwood-Vicklan Historic District  
Vicksburg, Warren County, Mississippi

The Glenwood-Vicklan Historic District is located on the edge of the central business district in Vicksburg, Warren County, Mississippi. The district terrain is flat on the south half, rising to hills on the north side. The west boundary of the district abuts the border of the South Cherry Street National Register Historic District. The district includes the entire lengths of Vicklan Street, Glenwood Circle, and Edna Drive and Chambers Street from the bayou to Glenwood Circle. The streets are straight at the west end and gently curved in the east end. In the middle of the neighborhood is Glenwood Circle, a half circle street at the apex of a triangle that extends to the north from Vicklan Street. Vicklan and Chambers streets are parallel, and run east-west, until they run into Glenwood Circle where Chambers Street ends. Vicklan then curves to the north and continues to curve until it ends at a T-intersection with East Avenue. Edna Drive runs north-south from Vicklan to a T-intersection with East Avenue. Wilson Street connects Vicklan and Chambers from north to south at the west end of the district. The district can be accessed by major local arteries: Cherry Street on the west, East Avenue on the north, and Mission 66 on the east.

The district is purely residential and contains 163 buildings (131 houses and 32 garages). This neighborhood began as an extension of Chambers Street, a late 19th century and early 20th century affluent residential area neighborhood (listed in the National Register of Historic Places as a part of the South Cherry Street National Register District), when a bridge was constructed across the bayou at what was then the east end of the street. The Glenwood-Vicklan area filled up with houses from 1911 through the 1960s, with houses being constructed almost continually. With the exception of Edna Drive, the construction was not concentrated into one time period, but spanned the years from 1929 to 1966, with a house being built in nearly every year. The lots along Edna Drive were sold in the early 1950s with houses constructed in 1952 and 1953, for the most part. Interestingly, there are no detached garages on Edna Drive, only carports and attached garages.

The lot sizes in the district are generally 50' x 150' on Chambers Street, 65' x 200' on Vicklan Street, 75' x 230' on Glenwood Circle, and 76' x 250' on Edna Drive, with a few houses in the district either occupying two lots or adjoining a vacant lot. Setbacks in the district are generally 35' from the street. There are a few houses, especially along Glenwood Circle that are set farther back. The Glenwood-Vicklan neighborhood continues to be a desired area for families and includes a small open space with modern playground equipment, large live oak trees and a grassy area (No. 132). Sidewalks provide safe access around the neighborhood and rights-of-way beside the sidewalk are heavily landscaped. There are a number of very large magnolia trees in yards in the district which add considerable character to the streetscape.

The houses were built in a wide range of architectural styles representing the traditional tastes of the early twentieth century (Tudor Revival, Colonial Revival, Neoclassical, Craftsman, and Minimal Traditional) through the more modern expressions of the architecture of the 1950s (Ranch, Contemporary, and Split-level). The buildings in the district are in good condition, retain their architectural integrity, and have had some level of rehabilitation. The most frequent alterations made to the buildings within the district are the additions of synthetic siding and window replacement.

**United States Department of the Interior  
National Park Service**

**NATIONAL REGISTER OF HISTORIC PLACES  
CONTINUATION SHEET**

Section: 7 Page: 6

Glenwood-Vicklan Historic District  
Vicksburg, Warren County, Mississippi

Tudor Revival residences are represented by resources #27, #28, #87 and are one-story brick residences with gable roofs, some with flared cross gables, tapered chimneys, half timbering and diamond-paned windows.

There are four Craftsman-inspired residences (#2, #29, #81, #82) in the district. These houses are brick, stucco and clapboard-sided, one-story buildings with gable roofs highlighted by exposed rafter ends and widely overhanging eaves. Most have corner porches supported with brick or square wood columns. Craftsman-inspired doors and surrounds, windows, and vents in the gable ends, complete these residences.

The Colonial Revival style is represented by four residences (#10, #33, #62 and #65) in the district. These houses are generally one-story, clapboard-sided with a hip roof and dormers, Palladian windows, cornice returns, and 6/6 double-hung windows.

The Minimal Traditional and Ranch styles are also well represented in the Glenwood-Vicklan District. The Minimal Traditional houses are generally small, brick or clapboard buildings topped with gabled roofs with cross gables. There is little ornamentation, but often a cross-gabled portico supported with square box columns highlight the façade. Examples of this style are resources #41, #43, #52, and #55. The Ranch style (resources #1, #6, #39, #108) spans the 1950s and 1960s, and are brick residences with gable roofs, carports recessed under the main roof (on an end) supported by decorative wrought iron columns, and porticos or small porches with wrought iron columns.

In addition to residences, there are thirty-two detached garages, most of which are small one-story, asbestos shingle buildings with gable roofs. Garages were designed for one or two cars and some are open while others have one or two garage doors. They are generally free of ornamentation, with the exception of one with a half-timbered gable end (#87B).

Of the 163 resources in the district, 158 are contributing and six are non-contributing, with only three of the non-contributing being buildings constructed within the period of significance. These three historic residences are non-contributing because of the addition of brick siding over original clapboard siding which has drastically changed the character of the house. There are no buildings previously listed in the National Register in the district.



United States Department of the Interior  
National Park Service

NATIONAL REGISTER OF HISTORIC PLACES  
CONTINUATION SHEET

Section: 7

Page: 7

Glenwood-Vicklan Historic District  
Vicksburg, Warren County, Mississippi

Inventory of Resources

C= Contributing resource  
NC= Noncontributing resource

The inventory is arranged alphabetically by street name in ascending numerical order. Buildings are classified as contributing (C) or noncontributing (NC) to the historic character of the district.

1. C 1429 Chambers Street c. 1950 Ranch  
A one-story brick Ranch residence, facing south, with an asphalt shingle hip roof with a shed roof over the carport on the left end. There is a flat roof over the portico supported with decorative wrought iron columns. There are four bays: an off-center single-leaf glazed door (six lights) flanked by a large three-part picture window and a 6/6 double-hung aluminum window on the left and a 6/6 double-hung aluminum window on the right. Overhanging boxed eaves. Brick pier foundation. All bays set in plain openings.
2. C 1503 Chambers Street c. 1932 Craftsman  
A one-story stucco Craftsman residence, facing west, with an asbestos shingle hip-to-gable roof pierced by a gabled dormer with a vent. There is a cross gable with a porch recessed under the main roof supported with stuccoed columns. There is an exterior stuccoed chimney on the facade. There is a shed over a carport on the left end supported with decorative wrought iron columns. There are two bays: a set of three wood casement windows and a 6/1 double-hung wood window. The entrance is under the porch and is not visible. All bays set in plain openings. Overhanging eaves. Exposed rafter ends covered. Brick pier foundation.
3. C 1504 Chambers Street c. 1930  
A one-story stucco residence, facing north, with an asphalt shingle hip roof with a cross gable on the right side. There is a large brick exterior chimney on the left facade. There are three bays: an off-center single-leaf paneled door with fluted pilasters supporting a plain entablature flanked by a pair of 6/6 double-hung wood windows on the left and a pair of eight-light fixed wood windows on the right. The entry is set in a projecting gable room. Brick pier foundation. Overhanging eaves with the rafter ends covered with the fascia.
4. C 1505 Chambers Street c. 1931  
A one-story stucco residence, facing west, with an asphalt shingle gable roof with a cross hip roof. There is a porch recessed under the main roof on the left facade which is entered through an arched opening flanked by small rectangular fixed sashes with bars. There are two bays: a pair of 6/1 double-hung wood windows under the porch and a set of three 6/1 double-hung wood windows. Brick pier foundation. Overhanging open eaves. All bays set in plain openings.

United States Department of the Interior  
National Park Service

NATIONAL REGISTER OF HISTORIC PLACES  
CONTINUATION SHEET

Section: 7

Page: 8

Glenwood-Vicklan Historic District  
Vicksburg, Warren County, Mississippi

4B. C Garage for 1505 Chambers Street c. 1931

A one-story stucco one-car gabled garage with a garage door. Located on the left side, rear.

5. C 1506 Chambers Street c. 1937

A one-story stucco residence, facing north, with an asphalt shingle hip roof with cross gables on each side and over a projection on the façade. In front of the gable on the façade is a gabled arched portico. There are 5 bays: the off-center door, a single-leaf glazed door (fanlight), and a series of 6/6 double-hung vinyl windows are found in the projection; to the left of this projection are two 6/6 double-hung vinyl windows and to the right is a 6/6 double-hung wood window. Overhanging open eaves. There is an interior brick chimney. Brick pier foundation. All bays set in plain openings.

5B. C Garage for 1506 Chambers Street c. 1937

A one-story board and batten one-car gabled garage with a garage door. Located on the right side, rear.

6. C 1509 Chambers Street c. 1951 Ranch

A one-story brick Ranch, facing west, with an asphalt shingle gable roof with a shed roof over the right half which includes the garage. There are two bays: a set of 2/2 double-hung wood windows and a single-leaf glazed (a small square light) door. There is a shed roof over a portico supported with a decorative wrought iron column. All bays set in plain openings. Overhanging boxed eaves. Brick pier foundation.

7. C 1510 Chambers Street c. 1949

A one-story brick residence, facing east, with an asphalt shingle hip roof with an end brick chimney. There are five bays: a center recessed single-leaf (two small lights and four panels) door flanked by a fixed leaded window and an 8/8 double-hung wood window on each side. The entrance is enhanced with a surround featuring a broken entablature. Brick pier foundation.

8. C 1511 Chambers Street c. 1950 Minimal Traditional

A one-story brick Minimal Traditional residence, facing west, with an asphalt shingle stepped gable roof with a cross gable over a portico supported with decorative wrought iron columns. There is a three-sided bay window with a hip roof. There are four bays: an 8/8 double-hung vinyl window, a single-leaf panel door, an 8/8 double-hung vinyl window, and the bay with 4/4, 8/8, 4/4 double-hung vinyl windows. Close boxed eaves. Brick pier foundation. All bays set in plain openings.

9. C 1522 Chambers Street c. 1911

A one-story stucco residence, facing north, with an asphalt shingle gable roof pierced by an interior brick chimney and a gabled dormer filled with a fixed-light sash. The roof projects on the right half over a slightly projecting section which houses the recessed entry porch which is entered through a pair of wood French doors which are arched and set into an arched wall opening. There are three bays: the off-center entry to the porch flanked by a series of three 6/1 double-hung wood windows on the left and a set of three casement windows set in an arched opening (the windows are arched to fit the opening). Overhanging boxed eaves. Brick pier foundation.

United States Department of the Interior  
National Park Service

NATIONAL REGISTER OF HISTORIC PLACES  
CONTINUATION SHEET

Section: 7

Page: 9

Glenwood-Vicklan Historic District  
Vicksburg, Warren County, Mississippi

10. C 1523 Chambers Street c. 1946 Colonial Revival

A one-story asbestos-sided Colonial Revival residence, facing west, with a slate shingle gable roof with a shed roof over the full-facade porch supported with Doric columns. There are three gabled dormers with 6/6 double-hung wood windows. There are 7 bays: an off-center door flanked by two 6/6 double-hung wood windows on the left and four 6/6 double-hung wood windows on the right. The door is a four-light, one panel. Overhanging boxed eaves. Brick pier foundation. All bays set in plain openings.

11. C 1601 Chambers Street c. 1948

A one-story vinyl-sided residence, facing west, with an asphalt shingle gable roof with a stucco arched portico. There are four bays: a single-leaf panel door flanked by a pair of 6/6 double-hung wood windows on the left and two pair on the right. All bays set in plain openings. Brick pier foundation. Close boxed eaves.

12. C 1603 Chambers Street c. 1946 Minimal Traditional

A one-story asbestos-sided Minimal Traditional residence, facing west, with an asphalt shingle gable roof. There are five bays: an 8/8 double-hung window, a 6/6 double-hung window, a single-leaf glazed (four lights) door, and an 8/8 double-hung window. Brick pier foundation. All bays set in plain openings. Overhanging boxed eaves.

13. C 1605 Chambers Street c. 1951 Minimal Traditional

A one-story asbestos-sided Minimal Traditional residence, facing west, with an asphalt shingle gable roof pierced by a triangular vent. The porch is recessed under main roof on the right facade and is supported with decorative wrought iron columns and is enclosed with glass. There are two bays: an 8/8 double-hung wood window and a three-part window with a 6/6 double-hung wood window, a one-light fixed window, and a 6/6 double-hung window. The entrance is on the porch and is not visible. Close boxed eaves. All bays set in plain openings. Brick pier foundation.

14. C 1607 Chambers Street c. 1949 Minimal Traditional

A one-story asbestos-sided Minimal Traditional residence, facing west, with an asphalt shingle gable roof with a cross gable on the left facade over a projecting room. There is a shed over a porch across the facade supported with decorative wrought iron columns. There are three bays: an off-center single-leaf panel door flanked by pairs of 8/8 double-hung aluminum windows. Close boxed eaves. All bays set in plain openings. Brick pier foundation.

- 14B. C Garage for 1607 Chambers Street c. 1949

A one-story asbestos shingle one-car gabled garage with a garage door. Located on the right side, rear.

15. C 1608 Chambers Street c. 1928

A one-story asbestos-sided residence, facing west, with an asphalt shingle gable roof with a cross gable on the left facade and a gabled projection to the right of it which houses the entry through an arched opening. There are four bays: a pair of 6/1 double-hung wood windows, a set of three 6/1



United States Department of the Interior  
National Park Service

NATIONAL REGISTER OF HISTORIC PLACES  
CONTINUATION SHEET

Section:

7

Page: 10

Glenwood-Vicklan Historic District  
Vicksburg, Warren County, Mississippi

double-hung wood windows, a single-leaf glazed (fanlight) door and a single 6/1 double-hung wood window. No eaves. Brick pier foundation. All bays set in plain openings.

15B. C Garage for 1608 Chambers Street c. 1928

A one-story stucco two-car gabled garage without garage doors. Located on the right side, rear.

16. C 1609 Chambers Street c. 1954

A two-story brick residence, facing west, with an asphalt shingle gable roof with three gabled wall dormers breaking through the roof over each bay. There is an end brick chimney. There is a gabled one-story wing on the right end. There is a one-story shed roof carport on the left end. There are five bays: three in the main block (a single-leaf panel door with one sidelight and two multi-light vinyl fixed sash windows with transoms) and two in the wing (pair of four-light fixed sash and a multi-light fixed vinyl window). Close boxed eaves. All bays set in plain openings.

17. C 1610 Chambers Street c. 1932 Minimal Traditional

A one-story brick Minimal Traditional residence, facing north, with a slate gable roof with a cross gable over a projecting room on the left façade which has a small portico with a shed roof on the right side of it. There is a brick exterior chimney on the façade. There are four bays: two 6/6 double-hung wood windows, a single-leaf glazed (nine lights) door and a 6/6 double-hung wood window. No eaves. Brick pier foundation. All bays set in plain openings.

17B. C Garage for 1610 Chambers Street c. 1932

A one-story asbestos shingle one-car gabled garage with a garage door. Located on the right side, rear.

18. C 1612 Chambers Street c. 1946

A one-story asbestos-sided residence, facing north, with an asphalt shingle gable roof with a cross gable over a projecting room on the left. There is a shed roof over the porch set to the right of the projection supported with decorative wrought iron columns. There are three bays: a 6/6 double-hung wood window, a single-leaf paneled door and a large multi-light fixed window. Close boxed eaves. Brick pier foundation. All bays set in plain openings.

19. C 1615 Chambers Street c. 1937

A one-story brick L-front residence, facing west, with an asphalt shingle gable roof with a cross gable over a projecting room on the right facade. The porch to the left of the projection has a flat roof supported by decorative wrought iron columns. There is a wood balustrade on the roof of the porch. There are three bays in the projection: a center single-leaf panel door flanked by 6/6 double-hung wood windows. There are brick quoins around the door and a heavy entablature. Close boxed eaves. Brick pier foundation.

20. C 1616 Chambers Street c. 1946

A one-story asbestos-sided residence, facing north, with an asphalt shingle gable roof with a cross gable over a small projection that houses the recessed entry. There is a brick exterior chimney on



United States Department of the Interior  
National Park Service

**NATIONAL REGISTER OF HISTORIC PLACES  
CONTINUATION SHEET**

Section: 7

Page: 11

Glenwood-Vicklan Historic District  
Vicksburg, Warren County, Mississippi

the façade. There are three bays: the off-center single-leaf glazed door (three-light, three-panel) flanked by a pair of 6/6 double-hung wood windows on the left and a single 6/6 double-hung wood window on the right. Close boxed eaves. Brick pier foundation. All bays set in plain openings.

20B. C Garage for 1616 Chambers Street c. 1946

A one-story asbestos shingle one-car gabled garage with a garage door. Located on the left side, rear.

21. C 1617 Chambers Street c. 1934

A one-story vinyl-sided residence, facing west, with an asphalt shingle gable roof with a cross gable in the center. There is an exterior brick facade chimney. There are four bays: a center single-leaf glazed (four small square lights) arched door flanked by a small 6/6 double-hung vinyl window on the left and a single 6/6 double-hung vinyl window and a pair of the same on the right. Close boxed eaves. All bays set in plain openings. Brick pier foundation.

22. C 1618 Chambers Street c. 1946

A one-story stone and asbestos-sided residence, facing north, with an asphalt shingle gable roof pierced by a brick interior chimney and a gabled dormer filled with a 6/6 double-hung wood window. The porch is screened and is recessed under the main roof on the left end. There is a cross gable over a projecting room on the left façade. There are two bays: casement windows and a pair of 6/6 double-hung wood windows. The entrance is under the porch and is not visible. Brick pier foundation. Close boxed eaves.

22B. C Garage for 1618 Chambers Street c. 1946

A one-story board and batten two-car gabled garage with two garage doors. Located on the left side, rear.

23. C 1619 Chambers Street c. 1953

A one-story brick residence, facing west, with an asphalt shingle gable roof with a gable set on the right facade over a projection that contains a room and a porch supported with a brick column. There are four bays: two 6/1 double-hung wood window, a single-leaf glazed (four small lights) door, and an 8/1 double-hung wood window. There is a tall exterior brick chimney. All bays set in plain openings. Overhanging boxed eaves. Brick pier foundation.

24. C 1621 Chambers Street c. 1929

A one-story brick residence, facing west, with an asphalt shingle gable roof with a gable over a shorter wing on the right end. There is a cross gable over a projecting room and a small gable on the left facade which is a brick arched portico. There are four bays: a wood casement window, a pair of French doors under the portico, and two pair of casement windows (wood). There is an interior brick chimney. All bays set in plain openings. Brick pier foundation. Overhanging boxed eaves.

United States Department of the Interior  
National Park Service

NATIONAL REGISTER OF HISTORIC PLACES  
CONTINUATION SHEET

Section: 7 Page: 12

Glenwood-Vicklan Historic District  
Vicksburg, Warren County, Mississippi

25. C 1623 Chambers Street c. 1949

A one-story stucco residence with a two-story section on the right end, facing west. Both sections have asphalt shingle hip roofs. There is a hip roofed projecting room on the left end. A porch set between the projection and the two-story section is covered with a shed roof supported with a metal pole on a low brick wall. There are three casement windows: one in the projection, one under the porch and one in the two-story section. The entrance is into the side and is a single-leaf panel door. All bays set in plain openings. Brick pier foundation. Overhanging boxed eaves.

26. C 1625 Chambers Street c. 1956

A one-story brick residence, facing west, with an asphalt shingle hip roof with a shed roof over a room on the left end. There are three bays: a center single-leaf panel door flanked by casement windows. Overhanging boxed eaves. All bays set in plain openings. Brick pier foundation.

- 26B. C Garage for 1625 Chambers Street c. 1956

A one-story gabled asbestos shingle one-car garage with a garage door. Located on the left side, rear.

27. C 1628 Chambers Street c. 1930 Tudor Revival

A one-story stucco Tudor Revival residence, facing north, with an asphalt shingle gable roof with a cross gable on the right façade over a porch which is recessed under the main roof and supported with stuccoed piers forming an arched opening. There is a brick end chimney. There are three bays: a 6/1 double-hung wood window, a set of three 6/1 double-hung wood windows, and a single-leaf French door which is recessed. No eaves. Brick pier foundation. All bays set in plain openings.

28. C 1632 Chambers Street c. 1932 Tudor Revival

A one-story stucco Tudor Revival residence, facing north, with a tall asphalt shingle gable roof with a tall gable over a projecting room on the right façade. There is a hipped projection on the left end and a hip over a porte cochere on the right end. There is a brick interior chimney. There are six bays: an aluminum casement window and a single-leaf glazed door (full light) in the hipped wing; a pair of casement windows (diamond paned with a heavy wood plain window head), a pair of floor-length diamond-paned fixed lights, a single-leaf glazed (arched with a four-light window), and a small fixed window. The entry door is set in an arched opening which is outlined with brick. Brick pier foundation. No eaves.

29. C 1642 Chambers Street c. 1925 Craftsman

A one-story brick Craftsman residence, facing north, with an asphalt shingle gable roof pierced by a brick ridge chimney and two gabled dormers filled with 6-light casement windows. There is a full-façade hip roof which is broken in the center with a gabled entry. The right section of this hipped projection is a porch supported with brick columns, and it is screened. There are two bays: a series of wood casement windows and a door recessed under the gabled entry porch which has a screen door and the main door can not be seen. The screen door is set in an arched opening. Brick pier foundation. Overhanging eaves.

United States Department of the Interior  
National Park Service

NATIONAL REGISTER OF HISTORIC PLACES  
CONTINUATION SHEET

Section: 7

Page: 13

Glenwood-Vicklan Historic District  
Vicksburg, Warren County, Mississippi

29B. C Garage for 1642 Chambers Street c. 1925

A one-story board and batten one-car gabled garage without a garage door. Located on the right side, rear.

30. C 1644 Chambers Street c. 1940

A one-story brick residence, facing north, with an asphalt shingle gable roof with a cross gable over a projecting room. A flat metal roof projects on the left façade over a carport. There are seven bays which are mostly hidden behind a tall brick wall: a 1/1 double-hung wood window, a single-leaf panel door, a set of three 1/1 double-hung wood windows, a casement window, a 1/1 double-hung wood window, a single-leaf glazed door (one small square light in the top), a series of casement windows that turn the corner. Brick pier foundation. All bays set in plain openings. Overhanging boxed eaves.

31. C 1645 Chambers Street c. 1928

A one-story stucco residence, facing west, with an asphalt shingle hip roof with a hip over a wing on the left end. There is a brick chimney between the main block and the wing. There is a cross gable on the right facade over a projecting room with a half timbering in the gable end. The portico to the left of the projection is stuccoed and covered with a shed roof. The opening is a pointed arch. There are four bays: diamond-paned wood casement windows, a pair of the same, a single-leaf panel door and a large multi-light fixed wood window. All bays set in plain openings. Brick pier foundation. No eaves.

32. C 1701 Chambers Street c. 1937

A one-story brick and clapboard residence, facing east, with an asphalt shingle hip roof with a cross gable over a slightly projecting room. To the left of the projection is a suspended shed roofed portico. On the right of the projection is a three-sided bay window with a hip roof. There are four bays: an 8/8 double-hung vinyl window and a single-leaf full-glazed door to the left of the projection, a three-part bay in the projection (4/4, 8/8, 4/4), and a 6/6 double-hung window, multi-light fixed window, 6/6 double-hung wood window in the hipped bay window. No eaves. All bays set in plain openings. Brick pier foundation.

33. C 1705 Chambers Street c. 1939 Colonial Revival

A one-story brick Colonial Revival residence, facing east, with an asbestos shingle gable roof with a gable over the screened porch on the left end supported with square wood posts. There is an asphalt gabled carport on the right end supported with decorative wrought iron columns. There is a flat roof over the portico supported with decorative wrought iron columns, in the center of the main block. The entry is a single-leaf glazed door (two small lights, four panels) and is flanked by 8/8 double-hung wood windows. No eaves. Brick pier foundation.

34. C 1800 Edna Drive c. 1952

A one-story brick residence, facing west, with an asphalt shingle stepped gable roof with closed boxed eaves. There are four bays: an off-center door flanked by two pair of 6/6 double-hung wood windows on the left and a pair on the right. The door is a paneled single-leaf which is recessed with vertical bead board on the walls of the recess. The cornice is denticulated. Brick pier foundation. All bays set in plain openings.



United States Department of the Interior  
National Park Service

NATIONAL REGISTER OF HISTORIC PLACES  
CONTINUATION SHEET

Section: 7

Page: 14

Glenwood-Vicklan Historic District  
Vicksburg, Warren County, Mississippi

35. C 1801 Edna Drive c. 1952

A one-story brick and clapboard residence, facing east, with an asphalt shingle hip roof. There is a gabled portico supported with fluted Doric columns. There are five bays: a three-part window (6/6 double-hung vinyl), a single-leaf panel door with five-light sidelights and transom, and three 8/8 double-hung vinyl windows. There is a large carport addition on the right facade with a hip roof supported with brick columns. There are three French doors under the carport. Overhanging boxed eaves. All bays set in plain openings. Brick pier foundation.

36. C 1802 Edna Drive c. 1952

A one-story asbestos-sided shingle residence, facing west, with an asphalt shingle hip roof with a small cross hip on the right facade. There is a shed supported with decorative wrought iron columns over a carport on the left end. There are four bays: 8/8 double-hung wood window, single-leaf panel door, three-part (4/4, multi-light fixed, 4/4 double-hung) window and an 8/8 double-hung wood window in the projecting bay. All bays set in plain openings. Brick pier foundation. Overhanging boxed eaves.

37. C 1803 Edna Drive c. 1956

A one-story asbestos-sided (sides) and narrow brick (facade) residence, facing east, with an asphalt shingle hip roof with the carport recessed under main roof on the right facade supported with decorative wrought iron columns. The porch is recessed under the main roof and runs the right half of the facade and is supported with decorative wrought iron columns. There are three bays: three multi-light casement windows. The entrance is into the side, off the porch, and is a single-leaf panel door. Overhanging boxed eaves. Brick pier foundation. All bays set in plain openings.

38. C 1804 Edna Drive c. 1952

A one-story board and batten sided residence, facing west, with an asphalt shingle hip roof with a gabled off-center porch supported with decorative wrought iron columns. There is a shed roof over a carport on the left end supported with square wood posts. There are four bays: an off-center single-leaf glazed (two square lights in top) door flanked by a multi-light casement and three-part window (a one-light fixed flanked by casement) on the left and three-part of the same on the right. Overhanging boxed eaves. Brick pier foundation. All bays set in plain openings.

39. C 1805 Edna Drive c. 1954 Ranch

A one-story asbestos-sided (left half) and brick (right half) Ranch residence, facing east, with an asphalt shingle hip roof with a carport recessed under the main roof supported with square wood posts. There are four bays: two casement windows, a single-leaf glazed (oval light – new) door and a large casement window. Overhanging boxed eaves. Brick pier foundation. All bays set in plain openings.

40. C 1806 Edna Drive c. 1952

A one-story asbestos-sided residence, facing west, with a stepped gable roof with the center section raised and extended over a porch supported with decorative wrought iron columns. There is a shed roof over the carport on the left end supported with decorative wrought iron columns. There are five bays: a center single-leaf glazed (two square light) door flanked by a 6/6 double-hung wood window



**United States Department of the Interior  
National Park Service**

**NATIONAL REGISTER OF HISTORIC PLACES  
CONTINUATION SHEET**

Section: 7

Page: 15

Glenwood-Vicklan Historic District  
Vicksburg, Warren County, Mississippi

and pairs of 6/6 double-hung wood windows. There is a denticulated cornice. All bays set in plain openings. Brick pier foundation. Close boxed eaves.

41. C 1807 Edna Drive c. 1952 Minimal Traditional  
A one-story asbestos-sided Minimal Traditional residence, facing east, with an asphalt shingle gable roof with a gable over the carport on the right supported with metal poles. The porch is recessed under main roof for about half of the facade and is supported with decorative wrought iron columns. There are four bays: a pair of 3/1 double-hung wood windows, a smaller 3/1 double-hung wood window, a single-leaf panel door and a set of three 3/1 double-hung wood windows. All bays set in plain openings. Brick pier foundation. Close boxed eaves.
42. C 1808 Edna Drive c. 1952  
A one-story brick (wainscoting) and clapboard residence, facing west, with an asphalt shingle gable roof which extends over the facade slightly and is supported with decorative wrought iron columns at the entrance. There is a flat roof supported with metal poles over the carport. There are three bays: a single-leaf glazed (five small lights and four panels) door and a three-part 2/2 double-hung wood window, one-light fixed, 2/2 double-hung wood window and a 2/2 double-hung wood window. Overhanging boxed eaves front and no eaves sides. Brick pier foundation. All bays set in plain openings. There is brick around the door.
43. C 1809 Edna Drive c. 1950 Minimal Traditional  
A one-story asbestos-sided and brick (projecting room) Minimal Traditional residence, facing east, with an asphalt shingle gable roof with a gable over a projecting room in the center facade. There is a corner porch recessed under main roof supported with square wood posts. There is a gabled garage on the right side connected to the main house by a gabled hyphen. There are two bays: a wood casement window and a multi-light fixed window. The entry is into the side and is a single-leaf panel door. There is a casement window in the hyphen. Overhanging boxed eaves. All bays set in plain openings. Brick pier foundation.
44. C 1811 Edna Drive c. 1952  
A one-story asbestos shingle L-front residence, facing east, with an asphalt shingle gable roof and a cross gable on the left facade over a projecting room. The porch on the right of the projection is covered with a shed roof supported with square wood box columns. There are three bays: an 8/8 double-hung wood window, a single-leaf panel door and multi-light fixed window under the porch. No eaves. Brick pier foundation. All bays set in plain openings.
45. C 1812 Edna Drive c. 1953  
A one-story brick residence, facing west, with an asphalt shingle hip roof with a hip over the center porch supported with decorative wrought iron columns, and a hip over the projecting garage on the left facade. There are three bays: a 6/6 double-hung wood window, a single-leaf panel door and a three-part (6/6 double-hung wood window, one-light fixed, 6/6 double-hung wood window) window. Overhanging boxed eaves. Brick pier foundation. All bays set in plain openings.

United States Department of the Interior  
National Park Service

NATIONAL REGISTER OF HISTORIC PLACES  
CONTINUATION SHEET

Section: 7

Page: 16

Glenwood-Vicklan Historic District  
Vicksburg, Warren County, Mississippi

46. C 1813 Edna Drive c. 1952

A one-story brick residence, facing east, with an asphalt shingle hip roof with a hip over the projecting garage on the right facade. There are three bays: a casement window, single-leaf glazed (1 rectangular light) door and a casement window. All bays set in plain openings. Widely overhanging boxed eaves. Brick pier foundation.

47. C 1815 Edna Drive c. 1955

A one-story brick residence, facing east, with an asphalt shingle hip roof with a hip over a slightly projecting room on the facade. There is a shed over a carport on the right side. There are four bays: a 2/2 double-hung wood window, a set of three 2/2 double-hung wood windows, a single-leaf glazed (four small lights, four panels) door and a 2/2 double-hung wood window. Widely overhanging boxed eaves. All bays set in plain openings. Brick pier foundation.

48. C 1816 Edna Drive c. 1952

A one-story clapboard and brick (wainscoting) residence, facing west, with an asphalt shingle gable roof with a brick ridge chimney. There is a gabled room on the left end toward the rear. There is a new gabled porch supported with square metal posts on the right facade. There are six bays: a 2/2 double-hung wood window, a set of three 2/2 double-hung wood windows, a single 2/2 double-hung wood window, a three-part (2/2 double-hung wood window, one-light fixed, 2/2 double-hung wood window, a single-leaf glazed (fanlight) door, and a set of three 2/2 double-hung wood windows. There is a brick ridge chimney. Concrete slab foundation. All bays set in plain openings. No eaves.

49. C 1817 Edna Drive c. 1952

A one-story wood shingle (wainscoting) and board and batten residence, facing east, with an asphalt shingle gable roof. The carport is recessed under main roof on the left facade and is supported with paired square wood posts on a wood shingled knee wall. There are two bays: two casement windows. The entry is into the side and is a single-leaf panel door. Overhanging boxed eaves. All bays set in plain openings. Brick pier foundation.

50. C 1819 Edna Drive c. 1952

A one-story board and batten and brick (right end) residence, facing east, with an asphalt shingle gable roof with a gable on the north end with an exterior brick chimney. There are three bays: a three-part (casement, one-light fixed, casement) windows, and two pair of 2/2 double-hung wood. The center section is recessed and the entry is into the side which is a single-leaf panel door. Overhanging boxed eaves. Brick pier foundation. All bays set in plain openings.

51. C 1820 Edna Drive c. 1952

A one-story asbestos-sided residence, facing west, with an asphalt shingle hip roof and a shed over a porte cochere on the left end supported with metal poles. There are three bays: a three-part (4/4, double-hung wood, multi-light fixed, 4/4) window, a single-leaf glazed (new) door and a 6/6 double-hung wood window. All bays set in plain openings. Overhanging boxed eaves. Brick pier foundation.

United States Department of the Interior  
National Park Service

NATIONAL REGISTER OF HISTORIC PLACES  
CONTINUATION SHEET

Section: 7 Page: 17

Glenwood-Vicklan Historic District  
Vicksburg, Warren County, Mississippi

52. C 1821 Edna Drive c. 1952 Minimal Traditional  
A one-story asbestos-sided Minimal Traditional residence, facing east, with an asphalt shingle gable roof with a cross gable over a slightly projecting room. To the right of the projection is a shed covered portico supported with decorative wrought iron columns. There are three bays: an off-center single-leaf panel door flanked by a 2/2 double-hung wood window on the left and a large multi-light diamond-paned fixed window on the right. All bays set in plain openings. Brick pier foundation. No eaves.
53. NC 1822 Edna Drive c. 1966  
A one-story brick residence, facing west, with an asphalt shingle hip roof with a hipped section on the left end. There is an exterior brick chimney. There are 7 bays: two four-light fixed aluminum windows, a 2/2 double-hung aluminum window, a one-light fixed sash window, a 2/2 double-hung aluminum window, a single-leaf glazed (three stepped lights) door with sidelights, and a pair of 1/1 double-hung aluminum windows. There is a square lantern with a vent on the ridge. Overhanging boxed eaves. Brick pier foundation. All bays set in plain openings.
54. C 1823 Edna Drive c. 1954  
A one-story clapboard residence, facing east, with an asphalt shingle hip roof with a cross hip on the right facade. There is a garage recessed under main roof on the left. The roof extends over a narrow porch from the projection to the left and is supported with square wood posts. There are four bays: a single-leaf door that is shuttered with a shuttered door over it and a set of 2/2 double-hung wood windows under the porch and two sets of three 2/2 double-hung wood windows that wrap the corners of the projection. Overhanging boxed eaves. Brick pier foundation. All bays set in plain openings.
55. C 1825 Edna Drive c. 1952 Minimal Traditional  
A one-story brick (center projection) and drop siding Minimal Traditional residence, facing east, with an asphalt shingle gable roof with a cross gable in the center over a projecting room. The gable end is filled with vertical siding and completed with cornice returns. There are four bays: a casement window that wraps the corner (left), the single-leaf glazed (fanlight) door and a casement window in the projection; and a pair of casement wood windows. Overhanging boxed eaves. Brick pier foundation. All bays set in plain openings.
56. C 1826 Edna Drive c. 1953  
A one-story brick residence, facing west, with an asphalt shingle hip roof with a hip over the carport on the left at the rear supported with decorative wrought iron columns on brick knee wall. There are four bays: a pair of 1/1 double-hung aluminum windows that wrap the corner, a single-leaf panel door, a pair of aluminum casement windows, and a pair of casements that wrap the corner. Overhanging boxed eaves. All bays set in plain openings. Brick pier foundation.
57. C 1827 Edna Drive c. 1951  
A one-story brick residence, facing east, with an asphalt shingle hip roof with a cross hip and an exterior brick chimney. There is a flat roof over the portico supported with decorative wrought iron columns. There are four bays: a casement window, a pair of casements, a single-leaf glazed (a



United States Department of the Interior  
National Park Service

NATIONAL REGISTER OF HISTORIC PLACES  
CONTINUATION SHEET

Section: 7

Page: 18

Glenwood-Vicklan Historic District  
Vicksburg, Warren County, Mississippi

rectangular light) door with one sidelight, and a three-part casement window. Overhanging boxed eaves. Brick pier foundation. All bays set in plain openings.

58. C 1828 Edna Drive c. 1955

A one-story brick residence, facing west, with an asphalt shingle hip roof with a cross gable on the left end that extends over the carport and is supported with brick columns. There is a small entry porch recessed under the main roof just off the carport supported with a brick column and a decorative wrought iron column. There are three bays: a three-part (casement, one-light fixed, casement) window, and two casement (aluminum) windows that wrap the corners. The entry into the side is a single-leaf glazed (three stepped lights) door. All bays set in plain openings. Brick pier foundation. Widely overhanging boxed eaves.

59. C 1829 Edna Drive c. 1952

A one-story brick residence, facing east, with an asphalt shingle hip roof with a shed on the north elevation over a carport supported with square box columns. The corner porch (right) is supported with square box columns. There are four bays: a 2/2 double-hung wood window, two multi-light fixed windows, and a single-leaf panel door (under the porch). Brick pier foundation. All bays set in plain openings. Overhanging boxed eaves.

60. C 1831 Edna Drive c. 1953

A one-story brick Minimal Traditional residence, facing east, with an asphalt shingle hip roof with a hipped center porch supported with decorative wrought iron columns. There is an exterior brick chimney. There are three bays: an off-center single-leaf panel door flanked by pairs of 2/2 double-hung wood windows. The porte cochere on the left side has a gable roof supported with a brick wall. No eaves. All bays set in plain openings. Brick pier foundation.

61. C 1 Glenwood Circle c. 1950

A one-story brick residence, facing east, with an asphalt shingle hip roof with a hip over a projecting three-sided bay. There is a flat roof over the portico supported with decorative wrought iron columns. There are five bays: an off-center, single-leaf glazed (rectangular light, two panels) door flanked by a pair of 2/2 double-hung wood windows, a single 2/2 double-hung wood window, and a pair of 2/2 double-hung wood windows on the left, and the three-sided bay on the right filled with a 2/2 double-hung wood window, a three-part (fixed light flanked by 2/2 double-hung wood windows), and a 2/2 double-hung wood window. There is a carport on the right façade recessed under the main roof. Close boxed eaves. All bays set in plain openings. Brick pier foundation.

62. C 2 Glenwood Circle c. 1939 Colonial Revival

A one-story wood shake Colonial Revival residence, facing east, with an asphalt shingle gable roof with no eaves. There is gable on each end and an interior brick chimney. The entrance is recessed on the right façade of the main block and the recess is faced with pilasters. There are five bays: a 6/6 double-hung wood window in the left gabled section; two 6/9 double-hung wood windows and a single-leaf paneled door with transom in the main block and a 6/9 double-hung wood window in the right gabled section. Brick pier foundation.



United States Department of the Interior  
National Park Service

NATIONAL REGISTER OF HISTORIC PLACES  
CONTINUATION SHEET

Section: 7

Page: 19

Glenwood-Vicklan Historic District  
Vicksburg, Warren County, Mississippi

63. NC 2 ½ Glenwood Circle c. 1997

A one-story brick and vinyl modern residence, facing east, with a stepped gable roof and a hip roof over an off-center porch supported with square boxed columns. There are five bays: an off-center single-leaf full-glazed door with sidelights and transom flanked by a 12/9 double-hung vinyl window and a bay window (4/4 double-hung, multi-light fixed, 4/4 double-hung), on the left and three 12/9 double-hung vinyl windows on the right. All bays set in plain openings except door. Brick pier foundation. Overhanging boxed eaves.

64. C 3 Glenwood Circle c. 1939

A one-story clapboard residence, facing south, with an asphalt shingle gable roof pierced with two gabled dormers filled with 6/6 double-hung wood windows. There is a gabled addition on the left end with a dormer filled with 6/6 double-hung wood windows. There is a full façade (main block) porch with a shed roof supported with chamfered columns with a wood balustrade. There is a pair of 6/6 double-hung aluminum windows in the addition. There are five bays in the main block: center double-leaf paneled doors with a fanlight flanked by two 6/6 double-hung wood windows. Close boxed eaves. All bays set in plain openings. Brick pier foundation.

- 64B. C Garage for 3 Glenwood Circle c. 1939

A one-story board and batten two-car gabled garage without a garage door. Located on the right side, rear.

65. C 4 Glenwood Circle c. 1938 Colonial Revival

A two-story clapboard Colonial Revival residence, facing south, with an asphalt shingle hip roof with a one-story gabled wing on the left and a one-story porch on the right with a flat roof supported with brick columns. Behind the porch is a flat roofed carport supported with metal poles. There are two 6/6 double-hung wood windows in the left wing. There are three bays on the first floor: a center single-leaf glazed (four small lights, four panels) door with pilasters supporting the entablature, flanked by 6/6 double-hung wood windows. There are three 6/6 double-hung wood windows on the second floor. No eaves.

- 65B. C Garage for 4 Glenwood Circle c. 1938

A two-story asbestos shingle gabled garage with two 6/6 double-hung wood windows on the second floor and a single car opening without a door. Located on the right side, rear.

66. C 5 Glenwood Circle c. 1950

A one-story brick (wainscoting) and board and batten Contemporary residence, facing south, with a low asphalt shingle hip roof. There is a hipped wing on an angle on the right end. There are 6 bays: casement windows, a three-part casement window (single-light flanked by casement windows), a recessed single-leaf glazed (two small lights, four panels) door, and two casement windows in the wing. Widely overhanging eaves. Brick pier foundation. All bays set in plain openings. There is a gabled concrete block garage.

United States Department of the Interior  
National Park Service

NATIONAL REGISTER OF HISTORIC PLACES  
CONTINUATION SHEET

Section: 7

Page: 20

Glenwood-Vicklan Historic District  
Vicksburg, Warren County, Mississippi

- 66B. C Garage for 5 Glenwood Circle c. 1950

A one-story gabled concrete block and plywood two-car garage without garage doors. Located on the left side, rear.

67. C 7 Glenwood Circle c. 1950

A one-story asbestos-sided residence, facing south, with an asphalt shingled stepped gable roof with a brick end chimney. There is an off-center corner porch recessed under the main roof supported with a square wood boxed column. There are four bays: a single-leaf paneled door under the porch flanked by a set of three 8/8 double-hung wood windows on the left and two pair of 6/6 double-hung wood windows on the right. Overhanging boxed eaves. Brick pier foundation. All bays set in plain openings.

68. C 8 Glenwood Circle c. 1939 Neoclassical

A two-story brick Neoclassical residence, facing south, with an asphalt shingle gable roof with paired brick chimneys on either end. There is a two-story round portico supported with two-story Corinthian columns with a flat roof topped with a wood balustrade. There is a balcony at the second floor center bay which has a wrought iron balustrade. There is a gabled garage joined to the house with an open gabled hyphen. There are five bays: a center single-leaf paneled door with sidelights and fanlight flanked by two 8/8 double-hung wood windows. There are five bays on the second floor: a pair of French doors in the center flanked by two 8/8 double-hung wood windows. There is a wide plain wood cornice. Brick pier foundation. Close boxed eaves.

69. C 9 Glenwood Circle c. 1949

A one-story stucco and stone residence, facing south, with an asphalt shingle gable roof with an exterior brick and stone chimney on the façade. There is a large cross gable over a projecting room on the right façade. There is a cross gable over a bay with 6/6, 4/4, 6/6 double-hung aluminum windows. Next to it is a new (2005) portico supported with wood posts. The projection has a series of four 6/6 double-hung aluminum windows and is set in a stone-filled opening. There is a garage recessed under the main roof on the left façade. Concrete slab foundation. No eaves.

70. C 1521 Vicklan Street c. 1954

A one-story brick and board and batten residence, facing east, with an asphalt shingle gable roof and a gable over a carport on the left end. There is a cross gable over a projecting section on the right facade. There are four bays: an off-center single-leaf panel door flanked by wood casement windows on the left and two wood casement windows on the right. All bays set in plain openings. Brick pier foundation. Overhanging eaves.

71. C 1525 Vicklan Street c. 1932

A one-story board and batten residence, facing south, with an asphalt shingle gable roof with a shed over the full facade porch supported with square wood box columns. There is a gable over a large carport on the left end supported with square wood posts. There are five bays: center double-leaf panel doors flanked by two 9/6 double-hung windows with shutters and a shaped window head. Overhanging eaves. Brick pier foundation.

United States Department of the Interior  
National Park Service

NATIONAL REGISTER OF HISTORIC PLACES  
CONTINUATION SHEET

Section: 7

Page: 21

Glenwood-Vicklan Historic District  
Vicksburg, Warren County, Mississippi

72. C 1526 Vicklan Street c. 1937

A one-story vinyl sided residence, facing north, with an asbestos shingle gable roof with a brick chimney on the facade. There are three small cross gables across the center section of the facade. The first (left) gable has a rectangular diamond paned fixed sash; the second houses a pair of 1/1 double-hung wood windows, and the third is bricked and houses the recessed entry - single-leaf panel door. To the left of these gabled projections is a pair of 1/1 double-hung wood windows and to the right are two 6/6 double-hung windows. All bays set in plain openings. Brick pier foundation. No eaves.

73. NC 1527 Vicklan Street c. 1941

A one-story brick (modern) over original clapboard residence, facing south, with an asphalt shingle gable roof with an exterior brick chimney. There are two cross gables. The clipped gable on the left facade covers a projecting room while the gable on the right covers a porch supported with brick columns. There are two bays: a pair of 6/1 double-hung wood windows in the projection and a single 6/1 double-hung wood window under the porch. The entrance is a single-leaf French door into the side, off the porch. The building is non-contributing because brick siding has been added over the original clapboard siding. All bays set in plain openings. Brick pier foundation. Overhanging boxed eaves.

74. C 1528 Vicklan Street c. 1937

A one-story stucco and brick (new) residence, facing north, with an asphalt shingle gable roof with a cross gable on the right facade. A shed roof covers the porch on the left façade which has been closed with stucco and a fixed diamond-paned window. Over the projection is a brick exterior chimney flanked by pairs of fixed diamond-paned windows. All bays set in plain openings. Brick pier foundation. Close eaves.

75. C 1530 Vicklan Street c. 1928

A one-story stucco residence, facing north, with a broad asphalt shingle gable roof with a small cross gable on the left end. There is a corner porch of the left façade supported with decorative wrought iron columns. There are four bays: a 10/10 double-hung wood window in the projection, a single-leaf paneled door under the porch and two 10/10 double-hung wood windows. Overhanging eaves with exposed rafter ends. Brick pier foundation. All bays set in plain openings.

- 75B. C Garage for 1530 Vicklan Street c. 1928

A two-story asbestos shingle two-car gabled garage with one large garage door and one 6/6 double-hung wood window on the second floor. Located on the left side, rear.

76. C 1600 Vicklan Street c. 1929

A one-story clapboard residence, facing north, with an asphalt shingle gambrel roof with an arched portico supported with narrow Doric columns. There is a large dormer with a small 6/6 double-hung wood window. The porch recessed under main roof on the left facade is enclosed with wood casement windows. There are three bays: a center single-leaf glazed (fanlight) door with fanlight flanked



United States Department of the Interior  
National Park Service

NATIONAL REGISTER OF HISTORIC PLACES  
CONTINUATION SHEET

Section: 7

Page: 22

Glenwood-Vicklan Historic District  
Vicksburg, Warren County, Mississippi

by 12/12 double-hung wood windows. All bays set in plain openings. Brick pier foundation. Overhanging boxed eaves.

76B. C Garage for 1600 Vicklan Street c. 1929

A two-story clapboard two-car garage with a gambrel roof. There are two 1/1 double-hung aluminum windows on the second floor. There are two garage doors. Located on the right side, rear.

77. C 1602 Vicklan Street c. 1961

A one-story asbestos shingle residence, facing north, with an asphalt shingle hip roof with a flat roof over a carport on the left end. There are three bays: an off-center single-leaf panel door flanked by a large multi-light wood window on the left and a pair of 1/1 double-hung wood window on the right. All bays set in plain openings. Brick pier foundation. Overhanging boxed eaves.

78. C 1604 Vicklan Street c. 1941

A one-story brick residence, facing north, with an asbestos shingle gable roof with a cross gable over a slightly projecting room. There is an interior brick chimney and two gabled dormers filled with a pair of six-light fixed sash windows. There are four bays: a 6/6 double-hung wood window, a set of three 6/6 double-hung wood windows, a single-leaf panel door with fluted pilasters, and a 6/6 double-hung wood window. There is a six-light fixed sash window in the gable end. All bays set in plain openings except door. Brick pier foundation. Close boxed eaves.

79. C 1606 Vicklan Street c. 1934

A two-story stucco residence, facing north, with an asbestos shingle hip roof with an exterior brick chimney. There are five bays: a center single-leaf paneled door flanked by two 6/6 double-hung wood windows. The surround is fluted pilasters supporting a broken pediment. All bays set in plain openings except door. Brick pier foundation. Close boxed eaves.

79B. C Garage for 1606 Vicklan Street c. 1934

A one-story two-car vertical board garage with two doors. Located on the right side, rear.

80. C 1608 Vicklan Street c. 1940

A one-story brick residence, facing north, with an asbestos shingle gable roof with a gabled wing that is set at an angle to the main block on the right side. This wing has a large brick chimney on the facade and three bays: two 6/6 double-hung wood windows and a large multi-light fixed window. There is a cross gable over a projecting two-bay room with a recessed wood vent in the gable end. There is a gable over a slightly projecting entrance. The main block has five 6/6 double-hung wood windows and a single-leaf panel door. There is a gable over a small room on the left end toward the rear which has a porch supported with square wood posts. The room has a 6/6 double-hung wood window and houses a side entrance – a single-leaf glazed door. There are two triangular vents in the front slope. All bays set in plain openings. Brick pier foundation. Close boxed eaves.

80B. C Garage for 1608 Vicklan Street c. 1940

A one-story brick two-car gabled garage without garage doors. Located on the right side, rear.



United States Department of the Interior  
National Park Service

NATIONAL REGISTER OF HISTORIC PLACES  
CONTINUATION SHEET

Section: 7

Page: 23

Glenwood-Vicklan Historic District  
Vicksburg, Warren County, Mississippi

81. C 1615 Vicklan Street c. 1925 Craftsman

A one-story brick Craftsman residence, facing south, with an asphalt shingle gable roof with a gabled dormer in the front slope filled with four 6-light fixed sash windows and one on the west slope. There is a projecting gable on the left facade over a projecting room and a corner (left facade) porch supported with a brick column. There are four bays: a 6/1 double-hung wood window under the porch, a 6/1 double-hung wood window in the projection, a set of three 6/1 double-hung wood windows, and a set of four multi-light casement wood windows. The entrance is into the side off the porch and is a single-leaf panel door. Overhanging boxed eaves. All bays set in plain openings. Brick pier foundation.

81B. C Garage for 1615 Vicklan Street c. 1925

A one-story brick two-car gabled garage without garage doors. Located on the left side, rear.

82. C 1617 Vicklan Street c. 1925 Craftsman

A one-story stucco Craftsman residence, facing south, with an asbestos shingle gable roof pierced by a gabled dormer filled with a 6/6 double-hung wood window. There is a cross gable on the left facade over a projecting room and a small gabled portico stuccoed arch with wrought iron handrail. The porch is recessed under the main roof on the right facade and is supported with stuccoed columns and a decorative wrought iron balustrade. There are three bays: a three part arched window with three 6/1 double-hung wood windows set in an arched opening, a single-leaf glazed (nine-light round in top) door, and a 6/1 double-hung wood window. Brick pier foundation. Overhanging eaves.

82B. C Garage for 1617 Vicklan Street c. 1925

A one-story asbestos shingle one-car gabled garage without a garage door. Located on the right side, rear.

83. C 1619 Vicklan Street c. 1928 Tudor Revival

A one-story brick Tudor Revival residence, facing south, with an asphalt shingle gable roof with a cross gable in the center with an arched opening. There is a large brick exterior chimney with chimney posts. There are four bays: a 12/12 double-hung wood window left of the chimney, a single-leaf arched glazed (square light) door, a three-part arched multi-light window, and a three-part 1/1 double-hung wood window. All bays set in plain openings. Brick pier foundation. Close boxed eaves.

83B. C Garage for 1619 Vicklan Street c. 1928

A one-story asbestos shingle two-car gabled garage without garage doors. Located on the left side, rear.

84. C 1625 Vicklan Street c. 1930

A one-story brick residence, facing south, with an asphalt shingle gable roof with a cross gable over a projecting room on the right. A small gable to the left side of the projection is set over the entrance. To the front of this gable is a slight shed supported with a Doric column. There is an interior brick chimney. There are two triangular wood vents. There are six bays: a pair of 6/6 double-hung vinyl windows in the left facade which was a porch originally; two 6/6 double-hung wood windows and a

United States Department of the Interior  
National Park Service

NATIONAL REGISTER OF HISTORIC PLACES  
CONTINUATION SHEET

Section: 7 Page: 24

Glenwood-Vicklan Historic District  
Vicksburg, Warren County, Mississippi

single-leaf glazed (new) door in the main block, and two 6/6 double-hung wood windows in the projection. Close boxed eaves. Brick pier foundation. All bays set in plain openings.

85. C 1629 Vicklan Street c. 1939

A one-story brick residence, facing south, with an asbestos shingle gable roof with a cross gable on the right facade and a gabled portico brick arch to the front on it on the left facade. The porch on the left facade is enclosed with two fixed sashes. There are three other bays: a three-part (1/1 double-hung wood window), a single-leaf glazed arched door (with a fanlight in the top) set in an arched opening, and two 1/1 double-hung wood windows. Close boxed eaves. Brick pier foundation.

85B. C Garage for 1629 Vicklan Street c. 1939

A one-story asbestos shingle two-car gabled garage without garage doors. Located on the left side, rear.

86. C 1631 Vicklan Street c. 1958

A one-story stucco L-shaped Contemporary residence, facing south, with an asphalt shingle hip roof which has a bay window on the corner with a hip roof. A metal awning supported with metal poles runs along the facade. There are four bays: a single-leaf glazed (four-light, one panel) door, a pair of casement wood windows. There is an interior stucco chimney. All bays set in plain openings. Brick pier foundation. Overhanging eaves.

87. C 1632 Vicklan Street c. 1929 Tudor Revival

A one-story brick Tudor Revival residence, facing north, with an asphalt single gable roof with a cross gable on the right facade with half timbering in the gable end. There is a flat roof over the porte cochere on the right side supported with brick columns. There is a flat roof over a small addition on the left end. There is a slightly projecting gable which contains the entrance. There is an exterior brick chimney. There are three bays: three casement wood windows on the left of the chimney; a single-leaf panel door and a four-part wood casement window with transoms to the right of the entry. Brick pier foundation. No eaves.

87B. C Garage for 1632 Vicklan Street c. 1929

A one-story brick two-car gabled garage with one large garage door. The gable end is half-timbered. Located on the right side, rear.

88. C 1634 Vicklan Street c. 1949

A one-story brick and vinyl sided residence, facing north, with an asphalt shingle hip roof with a cross gable over an off-center projecting room (brick). There are five bays: the center single-leaf French door flanked by a three-part (casement window, one-light fixed window, casement window) window and a multi-light casement window on the left and a three-part window (casement window, one-light fixed window, casement window) and a set of three casement windows that wrap the corner. All bays set in plain openings. Brick pier foundation. Close boxed eaves.

United States Department of the Interior  
National Park Service

NATIONAL REGISTER OF HISTORIC PLACES  
CONTINUATION SHEET

Section: 7

Page: 25

Glenwood-Vicklan Historic District  
Vicksburg, Warren County, Mississippi

88B. C Garage for 1634 Vicklan Street c. 1949

A one-story brick two-car hip roof garage with two garage doors. Located on the left side, rear.

89. C 1636 Vicklan Street c. 1937

A one-story asbestos shingle residence, facing north, with an asphalt shingle gable roof with a gabled room on the right end. There is a porch set to the right of the facade with a cross gable roof supported with square wood box columns connected with a wood balustrade. There is a wood fanlight in the gable end. There are three bays: a 12/12 double-hung wood window on the left of the porch; a single-leaf French door with 12/12 floor length wood windows, and a 6/6 double-hung wood window in the wing. All bays set in plain openings. Brick pier foundation. No eaves.

90. C 1638 Vicklan Street c. 1948

A one-story clapboard residence, facing north, with an asphalt shingle gable roof pierced by two gabled dormers filled with 6/6 double-hung vinyl windows. There is a shed-covered portico supported with decorative wrought iron columns. There are five bays: a series of single-light windows that enclose the porch, two 6/6 double-hung wood windows, a single-leaf panel door and a 6/6 double-hung wood window. There is an interior brick chimney. All bays set in plain openings. Brick pier foundation. Close boxed eaves.

90B. C Garage for 1638 Vicklan Street c. 1948

A one-story wood shingle two-car gabled garage with garage doors. Located on the left side, rear.

91. C 1640 Vicklan Street c. 1951 Minimal Traditional

A one-story brick Minimal Traditional residence, facing north, with an asphalt shingle gable roof with a cross gable roof with a cross gable over a projecting room on the left facade. There is a shed over a porch which stretches almost across the entire facade. The porch is supported with square wood box columns. There are five bays: a center single-leaf panel door flanked by two 6/6 double-hung wood windows. No eaves. All bays set in plain openings. Brick pier foundation.

91B. C Garage for 1640 Vicklan Street c. 1951

A one-story asbestos shingle one-car gabled garage with a garage door. Located on the right side, rear.

92. C 1642 Vicklan Street c. 1953 Ranch

A one-story brick (wainscoting) and board and batten Ranch residence, facing north, with a low asphalt shingle roof. The carport is recessed under main roof on the right side and is supported with a metal pole. There are five bays: a center single-leaf glazed door with one sidelight flanked by two pair of louvered windows and a fixed sash on the left and a pair of louvered windows on the right. All bays set in plain openings. Concrete slab foundation. Close boxed eaves.



United States Department of the Interior  
National Park Service

NATIONAL REGISTER OF HISTORIC PLACES  
CONTINUATION SHEET

Section: 7 Page: 26

Glenwood-Vicklan Historic District  
Vicksburg, Warren County, Mississippi

93. C 1646 Vicklan Street c. 1951

A one-story brick residence, facing north, with an asphalt shingle gable roof. There is a shed roof over an almost full-facade porch supported with decorative wrought iron columns. There are four bays: an off-center single-leaf panel door flanked by an 8/8 double-hung wood window and a 6/6 double-hung wood window on the left and a 6/6 double-hung wood window on the right. No eaves. All bays set in plain openings. Brick pier foundation.

94. C 1648 Vicklan Street c. 1950

A one-story asbestos-sided (left facade) and brick residence, facing north, with an asphalt shingle gable on hip roof with a brick end chimney. A shed roof projects over a porch set on the right facade supported with decorative wrought iron columns. There are five bays: two 6/6 double-hung wood windows; and under the porch are a single-leaf panel door and two 6/6 double-hung wood windows. Close boxed eaves. All bays set in plain openings. Brick pier foundation.

95. C 1650 Vicklan Street c. 1949 Minimal Traditional

A one-story asbestos-sided Minimal Traditional residence, facing north, with an asphalt shingle gable roof with a cross gable over a projecting room on the right facade. There is a brick exterior chimney. The center entrance is recessed and there is a single-leaf panel door with a sidelight. There is a large multi-light fixed window on the left of the entry and a pair of 6/6 double-hung wood windows on the right. All bays set in plain openings. Brick pier foundation. Narrow eaves.

96. C 1652 Vicklan Street c. 1952 Minimal Traditional

A one-story asbestos-sided and brick Minimal Traditional residence, facing north, with an asphalt shingle hip roof with a hip over a projecting room on the left facade. There are three bays: a center single-leaf glazed (round light) door flanked by a 2/2 double-hung wood window on the left and set of three 2/2 double-hung wood window on the right. Closed boxed eaves. Brick pier foundation. All bays set in plain openings.

97. C 1654 Vicklan Street c. 1941 Minimal Traditional

A one-story brick Minimal Traditional residence, facing north, with an asphalt shingle gable roof with a gable over the porte cochere supported with brick columns. There is a cross gable portico supported with decorative wrought iron columns. There is a gable over a porch on the left end which is glassed in. There are three bays: a center single-leaf glazed (three small lights, four panels) door flanked by pairs of 6/6 double-hung wood windows. There is a six-light fixed sash window in the gable end. All bays set in plain openings. Brick pier foundation. Close boxed eaves.

98. C 1656 Vicklan Street c. 1950 Minimal Traditional

A one-story asbestos-sided Minimal Traditional residence, facing north, with stepped asphalt shingle gable roof. The center section of the roof is raised and extends over a slightly projecting room and a corner porch supported with decorative wrought iron columns. There are four bays: an off-center single-leaf glazed (four-light, one panel (new)) door flanked by a 6/6 double-hung wood window and an 8/8 double-hung wood window on the left and a pair of 6/6 double-hung wood windows on the right. All bays set in plain openings. Brick pier foundation. Overhanging boxed eaves.



United States Department of the Interior  
National Park Service

NATIONAL REGISTER OF HISTORIC PLACES  
CONTINUATION SHEET

Section: 7 Page: 27

Glenwood-Vicklan Historic District  
Vicksburg, Warren County, Mississippi

99. C 1658 Vicklan Street c. 1948

A one-story stucco residence, facing north, with an asphalt shingle hip roof with a hip over a projecting room on the right facade. The porte cochere is recessed under main roof and is supported with stuccoed columns – a room has been extended into the porte cochere and there is a single-leaf panel door. There are three bays: a center single-leaf panel door flanked by a three-part (casement, one-light fixed, casement) wood window on the left and a casement window on the right. There is a stuccoed interior chimney. All bays set in plain openings. Brick pier foundation. Overhanging boxed eaves.

100. C 1913 Vicklan Street c. 1940 Minimal Traditional

A one-story asbestos-sided Minimal Traditional residence, facing north, with an asphalt shingle gable roof with a cross gable over a projecting room on the right facade and one set in front of it on its right facade. A shed roof covers a portico on the left facade of the first projection. There are three bays: an 8/8 double-hung wood window, an off-center single-leaf panel door and a 6/6 double-hung wood window. All bays set in plain openings. Brick pier foundation. Close boxed eaves. (Note: while it appears that this house number is out of line, it is not, it is the actual house number and falls between the 1600s and the 1700s.)

100B. C Garage for 1913 Vicklan Street c. 1940

A one-story asbestos shingle one-car gabled garage with a garage door. Located on the left side, rear.

101. C 1915 Vicklan Street c. 1946

A one-story asbestos shingle residence, facing north, with an asphalt shingle hip roof with a cross gable on the right facade. There is a gabled portico on the left facade of this gable, supported with square wood posts. There are five bays: a 15/15 double-hung wood window, a single-leaf panel door, two 6/6 double-hung wood windows, and a pair of 6/6 double-hung wood windows. Brick pier foundation. No eaves. (Note: while it appears that this house number is out of line, it is not, it is the actual house number and falls between the 1600s and the 1700s.)

102. C 1917 Vicklan Street c. 1947

A one-story brick residence, facing north, with an asphalt shingle hip roof with a hip over a carport on the right rear. There is an interior brick chimney. There is a hip over a projecting section on the right facade which has a hipped porch on its left facade supported with square wood posts. There are five bays: two pair 6/6 double-hung aluminum windows, a single-leaf panel door with sidelights, a three-part window (6/6, 1-light fixed, 6/6), and a pair of 6/6 double-hung aluminum windows. All bays set in plain openings. Brick pier foundation. Close eaves. (Note: while it appears that this house number is out of line, it is not, it is the actual house number and falls between the 1600s and the 1700s.)

103. C 1706 Vicklan Street c. 1954

A one-story brick and vertical siding shed style residence, facing north, with an asphalt shingle shed roof that intersects toward the middle. The center section is recessed under the main roof and is

United States Department of the Interior  
National Park Service

NATIONAL REGISTER OF HISTORIC PLACES  
CONTINUATION SHEET

Section: 7

Page: 28

Glenwood-Vicklan Historic District  
Vicksburg, Warren County, Mississippi

supported with metal poles. The carport is recessed under the main roof. There are two bays: A large four-light, one-panel door set in a large glass opening and a series of wood casement windows. Widely overhanging boxed eaves. All bays set in plain openings. Concrete slab foundation.

104. C 1708 Vicklan Street c. 1952

A one-story asbestos shingle residence, facing north, with an asphalt shingle gable roof with a cross gable over a slightly projecting room. There are five bays: a pair of 2/2 double-hung wood windows; two single 2/2 double-hung wood windows in the projection; and a pair of 2/2 double-hung wood windows. The entry is into the left end of the projection and is a single-leaf panel door. All bays set in plain openings. Brick pier foundation. Close boxed eaves.

105. C 1710 Vicklan Street c. 1951

A one-story brick and vinyl-sided residence, facing north, with an asphalt shingle gable roof with a cross gable on the left facade with a gabled portico supported with metal poles. There are six bays: a single-leaf French door, two pair of 6/6 double-hung aluminum windows, a single-leaf panel door and two 6/6 double-hung aluminum windows. All bays set in plain openings. Overhanging boxed eaves. Concrete slab foundation.

106. NC 1712 Vicklan Street c. 1964

A one-story brick residence, facing north, with an asphalt shingle stepped gable roof with a flat roof on the right end over an open storage area, a flat roof in front of the right facade over a carport and a shed on the left facade over a storage area. There are five bays: an off-center single-leaf panel door flanked by two 6/6 double-hung aluminum windows over panels on the left and two on the right. All bays set in plain openings. Brick pier foundation.

107. C 1802 Vicklan Street c. 1955 Ranch

A one-story clapboard and brick (with lapping mortar) wainscoting Ranch residence, facing northwest, with an asphalt shingle gable roof with a cross gable over a projecting room on the left facade. There is a carport recessed under the main roof on the right facade supported with a square wood post. There are four bays: a one-light fixed aluminum window in the projection and a single-leaf panel door, a two-light fixed sash window and a one-light fixed sash window. All bays set in plain openings. Concrete slab foundation. Widely overhanging eaves.

108. C 1804 Vicklan Street c. 1961 Ranch

A one-story brick Ranch, facing west, with an asphalt shingle hip roof with a brick interior chimney. There is a hipped projecting room on the right facade. The porch to the left of the projection is recessed under the main roof and is supported with Doric columns. There are four bays: a three-light fixed aluminum window, a four-light fixed aluminum window, a single-leaf panel door and a sliding window. All bays set in plain openings. Concrete slab foundation. Widely overhanging boxed eaves.

109. C 1806 Vicklan Street c. 1963 Ranch

A one-story board and batten and drop siding (wainscoting) Ranch residence, facing west, with an asphalt shingle gable roof with an interior brick chimney. There is a flat roof over a carport on the left

United States Department of the Interior  
National Park Service

NATIONAL REGISTER OF HISTORIC PLACES  
CONTINUATION SHEET

Section: 7

Page: 29

Glenwood-Vicklan Historic District  
Vicksburg, Warren County, Mississippi

end supported with metal poles. The slight porch is recessed under the main roof and is supported with metal poles. There are four bays: a pair of 1/1 double-hung wood windows, a three-light fixed wood sash window, a single-leaf panel door, and a set of three 1/1 double-hung wood windows. Overhanging eaves. All bays set in plain openings. Concrete slab foundation.

110. C 1807 Vicklan Street c. 1953

A one-story board and batten Contemporary residence, facing east, with a low asphalt shingle gable roof. The garage is under the left end. The porch is recessed under main roof and is supported with square wood posts. There are four bays: a long rectangular eight-light fixed sash window, a large fixed sash window under the porch, a two-light fixed window and a 1/1 double-hung wood window. All bays set in plain openings. Brick pier foundation. Overhanging eaves.

111. C 1808 Vicklan Street c. 1952

A one-story brick and board and batten residence, facing west, with an asphalt shingle gable roof with a gable over a projecting room on the right facade. The carport is recessed under the main roof on the left facade and is supported with a metal pole. There are five bays: a two-light fixed wood window flanked by a single-leaf panel door under the carport and shuttered window and casement windows (wood) in the projection. Overhanging eaves. All bays set in plain openings. Concrete slab foundation.

112. C 1809 Vicklan Street c. 1950

A one-story brick (wainscoting) and vertical siding residence, facing east, with an asphalt shingle hip roof which has a square lantern vent. There is a hip roof over the carport on the right supported with decorative wrought iron columns. There are three bays: a single-leaf panel door, two three-part windows (casement, fixed light, casement). Widely overhanging boxed eaves. All bays set in plain openings. Brick pier foundation.

113. C 1810 Vicklan Street c. 1952

A one-story vinyl-sided residence, facing west, with an asphalt shingle gable roof with a gable over a carport on the left end supported with decorative wrought iron columns. There is a portico with a shed roof supported by square wood posts. There are three bays: a pair of 2/2 double-hung aluminum windows, a single-leaf glazed (three stepped lights) door and a one-light fixed window. No eaves. All bays set in plain openings. Concrete slab foundation.

114. C 1811 Vicklan Street c. 1951

A one-story brick residence, facing east, with an asphalt shingle stepped gable roof. The center section is raised and extends over a porch which is supported with decorative wrought iron columns. There are five bays: a center single-leaf panel door flanked by a 12/12 wood window and an 8/8 double-hung wood window. All bays set in plain openings. Brick pier foundation. Overhanging boxed eaves.

114B. C Garage for 1811 Vicklan Street c. 1951

A one-story asbestos shingle one-car gabled garage with a garage door. Located on the left side, rear.



United States Department of the Interior  
National Park Service

NATIONAL REGISTER OF HISTORIC PLACES  
CONTINUATION SHEET

Section: 7

Page: 30

Glenwood-Vicklan Historic District  
Vicksburg, Warren County, Mississippi

115. C 1812 Vicklan Street c. 1953

A one-story brick residence, facing west, with an asphalt shingle hip roof with a hip over a carport on the left façade. There are four bays: a multi-light fixed sash window, a single-leaf glazed (two square lights in top) door and two two-light sliding windows. There is a flat awning over the entrance. All bays set in plain openings. Brick pier foundation. Overhanging eaves.

116. C 1813 Vicklan Street c. 1952 Minimal Traditional

A one-story asbestos Minimal Traditional residence, facing east, with an asphalt shingle gable roof with a cross gable on the left facade over a projecting room. A carport has been added on the right and has a gable roof which extends to the front to form a flat roof. The porch to the right of the projection is covered by the main roof which extends to form a flat roof and is supported with decorative wrought iron columns. There are three bays: an 8/8 double-hung wood window, a single-leaf glazed (two square lights in top) door and a large multi-light fixed window. No eaves. All bays set in plain openings. Brick pier foundation.

117. C 1814 Vicklan Street c. 1950

A one-story asbestos-sided residence, facing west, with an asphalt shingle gable roof with a projecting gable room on the left end toward the rear. There is a shed metal awning over the entrance supported with decorative wrought iron columns. There are five bays in the main block: a center single-leaf glazed (fanlight) door flanked by two 6/6 double-hung wood windows. There is a 6/6 double-hung wood window in the projection. Brick pier foundation. No eaves. All bays set in plain openings.

118. C 1815 Vicklan Street c. 1950 Minimal Traditional

A one-story asbestos-sided Minimal Traditional residence, facing east, with an asphalt shingle gable roof with a cross gable over a projecting room on the right façade. There is a metal roof supported with decorative wrought iron columns over the entrance. There are three bays: a center single-leaf glazed (three small lights in top) door flanked by pairs of 6/6 double-hung wood windows. No eaves. Brick pier foundation. All bays set in plain openings.

118B. C Garage for 1815 Vicklan Street c. 1950

A one-story asbestos shingle one-car gabled garage with a garage door. Located on the right side, rear.

119. C 1816 Vicklan Street c. 1947

A one-story vinyl-sided residence, facing west, with an asphalt shingle gable roof with a gabled room (brick) on the right end and a gable over a room on the right end. There is a gabled portico. There are four bays: a bay hidden behind a dark storm window, a single-leaf glazed (four small lights, four panel) door and a bay hidden behind a dark storm window. No eaves. All bays set in plain openings. Brick pier foundation.

119B. C Garage for 1816 Vicklan Street c. 1947

A one-story asbestos shingle one-car gabled garage with a garage door. Located on the right side, rear.



United States Department of the Interior  
National Park Service

NATIONAL REGISTER OF HISTORIC PLACES  
CONTINUATION SHEET

Section: 7

Page: 31

Glenwood-Vicklan Historic District  
Vicksburg, Warren County, Mississippi

120. C 1817 Vicklan Street c. 1953

A one-story brick residence, facing east, with an asphalt shingle hip roof with a cross gable over a projecting gable room. There is a gabled portico on the left facade of the projection supported with decorative wrought iron columns. The gable end is covered in board and batten and filled with a rectangular wood vent. There are five bays: a three-part window (casement, one-light fixed, casement), a single-leaf arched panel door set in an arched opening; another three-part window, a casement window, and a casement/fixed light window that wraps the corner. All bays set in plain openings. Brick pier foundation. Close boxed eaves.

121. C 1818 Vicklan Street c. 1953 Minimal Traditional

A one-story asbestos-sided Minimal Traditional residence, facing west, with an asphalt shingle gable roof with a cross gable on the right facade. There are three bays: a three-part wood window (casement, fixed light, casement), an off-center single-leaf panel door and a pair of 2/2 double-hung wood windows. Exterior brick chimney. All bays set in plain openings. Brick pier foundation. No eaves.

121B. C Garage for 1818 Vicklan Street c. 1953

A one-story asbestos shingle one-car gabled garage with a garage door. Located on the right side, rear.

122. C 1819 Vicklan Street c. 1951

A one-story clapboard residence, facing east, with an asphalt shingle hip roof with a hip over a projecting room on the left facade. The covered porch is recessed under the main roof of the projection and is supported with decorative wrought iron columns. A gabled hyphen connects to a hip roofed room on the left side. There is a 6/6 double-hung wood window in the hyphen. There are three bays: an off-center single-leaf glazed (two square lights in top) door under the porch flanked by large multi-light fixed wood windows.

123. NC 1820 Vicklan Street c. 1953

A one-story brick (over original clapboard) residence, facing west, with an asphalt shingle gable roof. The porch on the right facade is recessed under main roof supported with square wood posts. There are four bays: two 6/6 double-hung aluminum windows, and a single-leaf glazed (octagonal window) and a large multi-light fixed wood window under the porch. The building is non-contributing because of the addition of brick siding over the original clapboard. No eaves. Brick pier foundation. All bays set in plain openings.

123B. C Garage for 1820 Vicklan Street c. 1953

A one-story board and batten one-car gabled garage with a garage door. Located on the right side, rear.

124. C 1821 Vicklan Street c. 1953 Minimal Traditional

A one-story asbestos-sided Minimal Traditional residence, facing east, with an asphalt shingle gable roof with a cross gable over a projecting room on the left facade. The porch on the right of the

United States Department of the Interior  
National Park Service

NATIONAL REGISTER OF HISTORIC PLACES  
CONTINUATION SHEET

Section: 7

Page: 32

Glenwood-Vicklan Historic District  
Vicksburg, Warren County, Mississippi

projection is recessed under the main roof and is supported with decorative wrought iron columns. There are three bays: a 2/2 double-hung wood window, a single-leaf glazed (three stepped lights) door, a multi-light fixed wood window. No eaves. All bays set in plain openings. Brick pier foundation.

124B. C Garage for 1821 Vicklan Street c. 1953

A one-story asbestos shingle one-car gabled garage with a garage door. Located on the right side, rear.

125. C 1822 Vicklan Street c. 1953

A one-story aluminum-sided residence, facing west, with an asphalt shingle gable roof with a cross gable on the façade supported with decorative wrought iron columns over a large bay. There is a flat roof over a carport on the left and with a single-leaf panel door under it. The left corner of the main block is recessed for a small porch supported with decorative wrought iron columns. The entrance, a single-leaf glazed (three stepped lights) door is into the side under this porch. There are three bays: a large three-part window (a multi-light fixed window flanked by casement windows) and two 2/2 double-hung aluminum windows. All bays set in plain openings. Brick pier foundation. No eaves.

126. NC 1823 Vicklan Street c. 1955

A one-story brick (over original clapboard) residence, facing east, with an asphalt shingle hip roof. There is a slightly projecting bay in the center with a hip roof. The carport is on the right and is recessed under main roof. There are four bays: a pair of 2/2 double-hung wood windows, a 2/2 double-hung wood window, a three-part (1/1 double-hung, 1-light fixed, 1/1 double-hung) wood window, a single-leaf glazed (one-light, 1 panel) door. The building is non-contributing because brick veneer has been added over the original clapboard siding. Overhanging eaves. All bays set in plain openings. Brick pier foundation.

127. C 1824 Vicklan Street c. 1953

A one-story asbestos-sided residence, facing east, with an asphalt shingle gable roof which extends over a porch on the left end which has been enclosed with a pair of 6/6 double-hung wood windows. There is a gabled portico supported with decorative wrought iron columns. There are three bays: an off-center single-leaf glazed (three stepped lights) door flanked by a pair of 6/6 double-hung wood windows on the left and a three-part (4/4 double-hung, one-light fixed, 4/4 double-hung) wood window. Brick pier foundation. All bays set in plain openings.

128. C 2200 Wilson Street c. 1943

A two-story brick (facade, first floor) and wood shake residence, facing east, with an asphalt shingle gable roof pierced by two gables over the windows. There is a one-story wing on the left end covered with a gable roof and filled with two 6/6 double-hung wood windows. There are two bays in the main block with a single-leaf glazed (six-light, one-panel) door and a three-part (4/4, 6/6, 4/4) double-hung wood window. The door surround is fluted pilasters supporting a plain entablature. Brick pier foundation. No eaves.

United States Department of the Interior  
National Park Service

NATIONAL REGISTER OF HISTORIC PLACES  
CONTINUATION SHEET

Section: 7 Page: 33

Glenwood-Vicklan Historic District  
Vicksburg, Warren County, Mississippi

129. C 2203 Wilson Street c. 1935

A two-story brick residence, facing west, with an asbestos shingle gable with a gable over the center bay. There is a brick end chimney. There is a one-story board and batten addition on the left end with a 6/6 double-hung vinyl window. There are three bays on the first floor: a center single-leaf panel door with four-light sidelights and a fanlight. The door surround is plain pilasters supporting a large shaped entablature. The entry is flanked by pairs of 9/9 double-hung vinyl windows. There are three 9/9 double-hung vinyl windows on the second floor. Brick pier foundation.

130. C 2205 Wilson Street c. 1950 Ranch

A one-story brick Ranch residence, facing west, with an asphalt shingle hip roof with a cross hip over a projecting bay on the left facade and one on the right facade. There are nine bays: a 9/9 double-hung wood window, a pair of 4/4 double-hung wood windows, four multi-light fixed windows, a recessed single-leaf panel door and two 9/6 double-hung wood windows over wood panels. There is an interior brick chimney. All bays set in plain openings. Brick pier foundation. Overhanging boxed eaves.

130B. C Garage for 2205 Wilson Street c. 1950

A one-story clapboard one-car gabled garage with a garage door. Located on the left side, at the sidewalk.

131. C 2206 Wilson Street c. 1949

A one-story brick and clapboard residence, facing east, with an asphalt shingle gable roof with a hip over a projecting room in the center. There is a brick ridge chimney. There is a carport recessed under the main roof which is supported with square wood box columns on a brick knee wall on the right end. There are seven bays: two 12/12 double-hung wood windows, a single-leaf panel door, and four 8/8 double-hung wood windows. There is a single-leaf panel door under the carport.

132. C Glenwood Circle Park c. 1938

A small triangular and circular green space with mature trees created by the streets forming Glenwood Circle has traditionally been undeveloped. Playground equipment was installed in the circle at some point and has been replaced by newer equipment. The triangular section remains undeveloped.

---

**8. Statement of Significance**

---

**Applicable National Register Criteria**

- A** Property is associated with events that have made a significant contribution to the broad patterns of our history.
- B** Property is associated with the lives of persons significant in our past.
- X **C** Property embodies the distinctive characteristics of a type, period, or method of construction or represents the work of a master, or possesses high artistic values, or represents a significant and distinguishable entity whose components lack individual distinction.
- D** Property has yielded, or is likely to yield information important in prehistory or history.

**Areas of Significance**

Architecture

**Period of Significance**

1911-1959

**Significant Dates****Criteria Considerations:**

Property is:

- ☐ **A** owned by a religious institution or used for religious purposes.
- ☐ **B** removed from its original location.
- ☐ **C** a birthplace or a grave.
- ☐ **D** a cemetery.
- ☐ **E** a reconstructed building, object, or structure.
- ☐ **F** a commemorative property.
- ☐ **G** less than 50 years of age or achieved significance within the past 50 years.

n/a

**Significant Person(s)**

n/a

**Cultural Affiliation(s)**

n/a

**Architect/Builder**

n/a

**Narrative Statement of Significance:** See continuation sheets.

---

**9. Major Bibliographical References**

---

**Bibliography** See continuation sheet.

**Previous documentation on file (NPS)**

- ☐ preliminary determination of individual listing (36 CFR 67) has been requested.
- ☐ previously listed in the National Register
- ☐ previously determined eligible by the National Register
- ☐ designated a National Historic Landmark
- ☐ recorded by Historic American Buildings Survey  
# \_\_\_\_\_
- ☐ recorded by Historic American Engineering Record  
# \_\_\_\_\_

**Primary Location of Additional Data**

- ☒ State Historic Preservation Office
- ☐ Other State agency
- ☐ Federal agency
- ☐ Local government
- ☐ University
- ☐ Other

Name of repository:  
Vicksburg Foundation for Historic  
Preservation



United States Department of the Interior  
National Park Service

NATIONAL REGISTER OF HISTORIC PLACES  
CONTINUATION SHEET

Section: 8

Page: 35

Glenwood-Vicklan Historic District  
Vicksburg, Warren County, Mississippi

Statement of Significance

The Glenwood-Vicklan Historic District meets National Register Criterion C in the area of architecture as one of the best intact examples of a middle- to upper-class residential neighborhood exhibiting the popular styles of the first half of the 20<sup>th</sup> century in Vicksburg, Mississippi. The architectural and historic context of Vicksburg is discussed in the Multiple Property Listing documentation for the **Historic Resources of Vicksburg, Mississippi**. (1992) The district includes examples of Tudor Revival, Colonial Revival, Neoclassical, Craftsman, Minimal Traditional, Ranch, Contemporary, and Split-level. The district retains its integrity of location, design, setting, materials, feeling, and association through an orderly progression of styles that were popular during this period of time.

The area that includes Chambers Street, Glenwood Circle, and the west half of Vicklan Street was developed by John and P. L. Hennessey who were in the real estate and insurance business. The viaduct over Stout's Bayou was constructed by the City of Vicksburg to provide access from the west to this new area. Vicklan Street was then extended after a tall bluff was removed and lots were laid out on Edna Drive. The houses in the Glenwood-Vicklan neighborhood were built by middle to upper class white men and women who were professionals (doctors, dentists, accountants, engineers), retailers (furniture and shoe store owner, car dealership owner), as well as those in the service industry (insurance agents, real estate agents, and service station owners). Many of these people moved from homes in the busy downtown area to this neighborhood with its quiet streets and more suburban type atmosphere. The Glenwood-Vicklan district was, however, within the city limits and close to the retail and governmental center of town. The district reflects the trend for families to move to areas outside of the downtown area because cars had become more affordable and widespread. The physical evidence of the increase in automobile ownership is found in the number of garages and carports in the district, as well as the increase in the size of lots to accommodate off-street parking. This is not seen in the earlier downtown neighborhoods where the houses are close together and parking is on the street.

The Glenwood-Vicklan Historic District is located on the edge of the central business district in Vicksburg, Warren County, Mississippi. The district terrain is flat on the south half, rising to hills on the north side. The west boundary of the district abuts the border of the South Cherry Street National Register Historic District. The district includes the entire lengths of Vicklan Street, Glenwood Circle, and Edna Drive and Chambers Street from the bayou to Glenwood Circle.

The district is purely residential and contains 163 buildings (131 houses and 32 garages). This neighborhood began as an extension of Chambers Street, a late 19<sup>th</sup> century and early 20<sup>th</sup> century affluent residential neighborhood (listed in the National Register of Historic Places as a part of the South Cherry Street National Register District), when a bridge was constructed across the bayou at what was then the east end of the street. The Glenwood-Vicklan area filled up with residences from 1911 through to the 1960s, with houses being constructed almost continually. With the exception of Edna Drive, the construction was not concentrated into one time period, but spanned the years from 1929 to 1966, with a house being built in nearly every year. The lots along Edna Drive were sold in the early 1950s with houses constructed in 1952 and 1953, for the most part.

**United States Department of the Interior  
National Park Service**

**NATIONAL REGISTER OF HISTORIC PLACES  
CONTINUATION SHEET**

Section: 8

Page: 36

Glenwood-Vicklan Historic District  
Vicksburg, Warren County, Mississippi

The district's period of significance extends from 1911 to 1959. This period begins with the earliest residence constructed in 1911 and ends in 1959, 50 years from the date of this nomination. Of the 163 buildings in the district, 157 were built within the period of significance.

In addition to residences, there are thirty-two detached garages, most of which are small one-story buildings. The district conveys a sense of architectural cohesiveness through design, settings and materials. Its architectural styles represent an orderly evolution from Tudor Revival to Contemporary reflecting changing tastes and popularity. The neighborhood reflects a feeling of time and place, a time when children played in their front yards, streets, and sidewalks. There are no intrusive buildings to detract from the district's ability to convey a sense of significance. The three non-contributing historic buildings (#73, #123, #126) have had brick veneer added, but to the casual observer, do not appear out of place in the district. Likewise, the other three non-contributing residences, built in 1964 (#106), 1966 (#53), and 1997 (#63), also appear to belong to the district because of their size, mass, materials, setback, and features. There are three residences (#77, #108, #109) constructed between 1961 and 1963, being only two to four years beyond the period of significance, which are designated as contributing because they are stylistically comparable to those Ranch style residences in the district built in 1959 or earlier.

The Glenwood-Vicklan District is distinguished from neighboring areas because it is a cohesive unit of houses separated from the buildings to its south by a bayou and the neighborhood beyond the bayou is of later vintage, primarily the 1970s. The South Cherry Street National Register District is to the west beyond the bayou. The South Cherry Street Historic District is primarily composed of earlier-constructed buildings and includes non-residential buildings that markedly distinguish it from the Glenwood-Vicklan district. To the north of the district, the arterial East Avenue is lined with later-constructed buildings and a later-constructed subdivision is located to the east.

There are, of course, other neighborhoods in Vicksburg, Mississippi that contain residential buildings of the styles represented in this district. However, none of these areas conveys a sense of place, contains as many intact examples of the styles represented in the Glenwood-Vicklan district, has retained all of its originally constructed buildings, or is void of intrusive structures. The Glenwood-Vicklan Historic District is singular in this respect. Of the districts previously listed in the National Register in Vicksburg, none is strictly residential, without intrusive buildings, or of the compact time period that this neighborhood is. The Main Street Historic District, listed in 1979, is a small district that includes the earliest residential and commercial buildings in the city. The district has a nineteenth-century character with low-scale buildings, cast-iron fences and brick streets that clearly distinguish it from the twentieth century feel in the Glenwood-Vicklan district with its curving streets and ample evidence of the automobile era.

The Uptown Vicksburg Historic District, listed in 1993, also differs in setting, feel, and association from the Glenwood-Vicklan district. The Uptown Historic District includes the governmental, commercial and social center of the city. The mix of residential, commercial and institutional buildings illustrate the Vicksburg boom period, from the 1880 to 1910. The South Cherry Street Historic District, listed in 2003, is dominated by the grand residences built by men who prospered in the cotton industry. The Grove Street Historic District, listed in 2007, contains some residences built in the architectural styles found in

**United States Department of the Interior  
National Park Service**

**NATIONAL REGISTER OF HISTORIC PLACES  
CONTINUATION SHEET**

Section: 8

Page: 37

Glenwood-Vicklan Historic District  
Vicksburg, Warren County, Mississippi

the Glenwood-Vicklan district, but also contains important institutional resources, including the National Historic Landmark Old Warren County Courthouse. The periods of significance for all the other historic districts in Vicksburg begin in the antebellum period with resources that reflect that age. The Glenwood-Vicklan Historic District, singularly, reflects a twentieth century neighborhood built for middle to upper class whites who depended on the automobile for transportation.

There are other residential areas in Vicksburg which were developed prior to this neighborhood or date from the 1950s and 1960s.

The buildings within the district have always been well-maintained, providing little need for extensive rehabilitation.



**United States Department of the Interior  
National Park Service**

**NATIONAL REGISTER OF HISTORIC PLACES  
CONTINUATION SHEET**

Section: 9 Page: 38

Glenwood-Vicklan Historic District  
Vicksburg, Warren County, Mississippi

**Bibliography**

The Vicksburg Foundation for Historic Preservation. Vicksburg Cultural Resource Survey, Phase 8, 2006.

The Vicksburg Foundation for Historic Preservation. Multiple Resource Nomination for Vicksburg, Mississippi, 1988.

Sanborn Insurance Maps for Vicksburg, Mississippi, 1932 and 1949.

---

**10. Geographical Data**

---

Acreage of Property: Approximately 33

UTM References:	Zone	Easting	Northing		Zone	Easting	Northing	
A	15	700660	3580050		D	15	700330	3579860
B	15	700650	3579780		E	15	700450	3579820
C	15	700150	3579640		F	15	700460	3580040

\_\_\_ See continuation sheet.

**Verbal Boundary Description** See continuation sheet.

**Boundary Justification:** See continuation sheet.

---

**11. Form Prepared By**

---

name/title: Nancy Bell

organization: Vicksburg Foundation for Historic Preservation

street & number: 1107 Washington Street

city or town: Vicksburg

date: 5/28/2009

telephone: 601.636.5010

state: MS

zip code: 39183

---

**Additional Documentation**

---

Submit the following items with the completed form:

Continuation Sheets

Maps

A USGS map (7.5 or 15 minute series) indicating the property's location.

A sketch map for historic districts and properties having large acreage or numerous resources.

Photographs

Representative black and white photographs of the property.

Additional items (Check with the SHPO or FPO for any additional items)

---

**Property Owner(s)**

---

name: multiple property owners

street & number:

city or town:

state:

telephone:

zip code:

---

**Paperwork Reduction Act Statement:** This information is being collected for applications to the National Register of Historic Places to nominate properties for listing or determine eligibility for listing, to list properties, and to amend existing listings. Response to this request is required to obtain a benefit in accordance with the National Historic Preservation Act, as amended (16 U.S.C. 470 et seq.).

**Estimated Burden Statement:** Public reporting burden for this form is estimated to average 18.1 hours per response including the time for reviewing instructions, gathering and maintaining data, and completing and reviewing the form. Direct comments regarding this burden estimate or any aspect of this form to the Chief, Administrative Services Division, National Park Service, P.O. Box 37127, Washington, DC 20013-7127; and the Office of Management and Budget, Paperwork Reductions Projects (1024-0018), Washington, DC 20503.

**United States Department of the Interior  
National Park Service**

**NATIONAL REGISTER OF HISTORIC PLACES  
CONTINUATION SHEET**

Section: 10 Page: 39

Glenwood-Vicklan Historic District  
Vicksburg, Warren County, Mississippi

**Section 10. Geographical Data**

**Verbal Boundary Description**

The boundaries of the Glenwood-Vicklan Historic District are shown on an accompanying map.

**Boundary Justification**

The boundaries of the Glenwood-Vicklan Historic District reflect a thorough survey of the historic resources of the neighborhood to the east of the present South Cherry Street National Register District. Boundaries were drawn to include streets which have large numbers of historic resources that retain their integrity and which, when viewed together, retain architectural cohesiveness through design, setting, materials, and feeling of time and place.



**United States Department of the Interior  
National Park Service**

**NATIONAL REGISTER OF HISTORIC PLACES  
CONTINUATION SHEET**

Section: Photographs Page: 40

Glenwood-Vicklan Historic District  
Vicksburg, Warren County, Mississippi

**Photographs**

The following information is the same for all photographs.

1. Glenwood-Vicklan Historic District
2. Vicksburg, Warren County, Mississippi
3. Nancy Bell
4. May 2009
5. Mississippi Department of Archives and History

Photo 1	2700 block of Chambers Street	view to northwest
Photo 2	2700 block of Chambers Street	view to west
Photo 3	2700 block of Chambers Street	view to northwest
Photo 4	1800 block of Edna Drive- east side	view to northeast
Photo 5	1800 block of Edna Drive	view to northwest
Photo 6	1800 block of Edna Drive	view to northeast
Photo 7	Glenwood Circle	view to north
Photo 8	Glenwood Circle (#68)	view to northwest
Photo 9	1500 block of Vicklan Street	view to southwest
Photo 10	1600 block of Vicklan Street- south side	view to southeast
Photo 11	1600 block of Vicklan Street- south side	view to southwest
Photo 12	1600 block of Vicklan Street	view to southeast
Photo 13	1600 block of Vicklan Street	view to east
Photo 14	1700 block of Vicklan Street	view to southwest
Photo 15	1700 block of Vicklan Street	view to southwest
Photo 16	1800 block of Vicklan Street	view to northwest
Photo 17	1800 block of Vicklan Street	view to south
Photo 18	2200 block of Wilson Street	view to south

UNITED STATES DEPARTMENT OF THE INTERIOR  
NATIONAL PARK SERVICE

NATIONAL REGISTER OF HISTORIC PLACES  
EVALUATION/RETURN SHEET

REQUESTED ACTION: NOMINATION

PROPERTY Glenwood-Vicklan Historic District  
NAME:

MULTIPLE Vicksburg MPS  
NAME:

STATE & COUNTY: MISSISSIPPI, Warren

DATE RECEIVED: 9/25/09 DATE OF PENDING LIST: 10/09/09  
DATE OF 16TH DAY: 10/24/09 DATE OF 45TH DAY: 11/08/09  
DATE OF WEEKLY LIST:

REFERENCE NUMBER: 09000886

REASONS FOR REVIEW:

APPEAL: N DATA PROBLEM: N LANDSCAPE: N LESS THAN 50 YEARS: N  
OTHER: N PDIL: N PERIOD: N PROGRAM UNAPPROVED: N  
REQUEST: Y SAMPLE: N SLR DRAFT: N NATIONAL: N

COMMENT WAIVER: N

☒ ACCEPT ☐ RETURN ☐ REJECT 11/03/09 DATE

ABSTRACT/SUMMARY COMMENTS:

Very high concentration of contributing resources. This district  
reflects upper middle class growth in the pre & post WWII years. High  
quality houses of popular styles provide a cohesive streetscape with  
good landscaping. nominated under MPS - Vicksburg.

RECOM./CRITERIA Accept C

REVIEWER J. Abbott DISCIPLINE \_\_\_\_\_

TELEPHONE \_\_\_\_\_ DATE \_\_\_\_\_

DOCUMENTATION see attached comments Y/☒ see attached SLR Y/☒

If a nomination is returned to the nominating authority, the  
nomination is no longer under consideration by the NPS.



MS, Warren County, Glenwood-Vickland #1  
Photo 1 of 18





MS, Warren County, Glenwood-Vicki lan HD  
Photo 2 of 18



MS, Warren County, Glenwood-Vicklau HD

Photo 3 of 18





Ms. Warren County, Glenwood-Vicklan H-D.

Photo 4 of 18



MS. Warren County, Glenwood-Vicklan  
H.D.

Photo 5 of 18





MS. Warren County, Glenwood-Vicklax  
H.T.

Photo 6 of 18





MS, Warren County, Glenwood-Vicklau  
H.D.

Photo 7 of 18





SLOW

MS, Warren County, Glenwood - Vicklan Hl

Photo 8 of 18





MS, Warren County, Glenwood-Vicklan H?  
Photo 9 of 18





MS, Warren County, Glenwood-Vicklen H.D.

Photo 10 of 18



MS, Warren County, Glenwood-Vicklun H.D.  
Photo 11 of 18





Ms, Warren County, Glenwood-Vicklau H.D.

Photo 12 of 18



MS, Warren County, Glenwood-Vicklau HD

Photo 13 of 18





MS, Warren County, Glenwood-Vicklau HD  
Photo 14 of 18



Ms, Warren County, Glenwood-Vicklau (H7)

Photo 15 of 18





Ms. Warren County, Glenwood-Vicklau HD

Photo 16 of 18



MS, Warren County, Glenwood-Vicklan H.I.

Photo 17 of 18






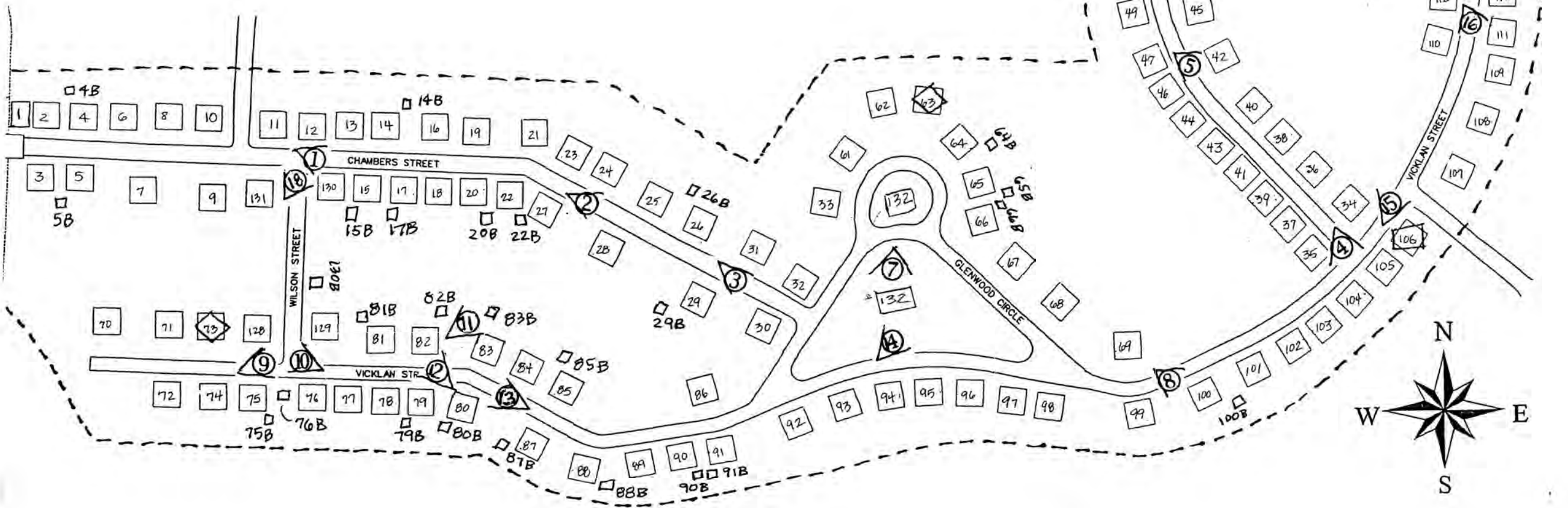


MS, Warren County, Glenwood-Vicklan H.D.  
Photo 18 of 18

# Glenwood-Vicklan Historic District Vicksburg, Warren County, MS

May 2009

Contributing building/site	
Non-contributing building	
Photograph number and direction	
District boundary	-----

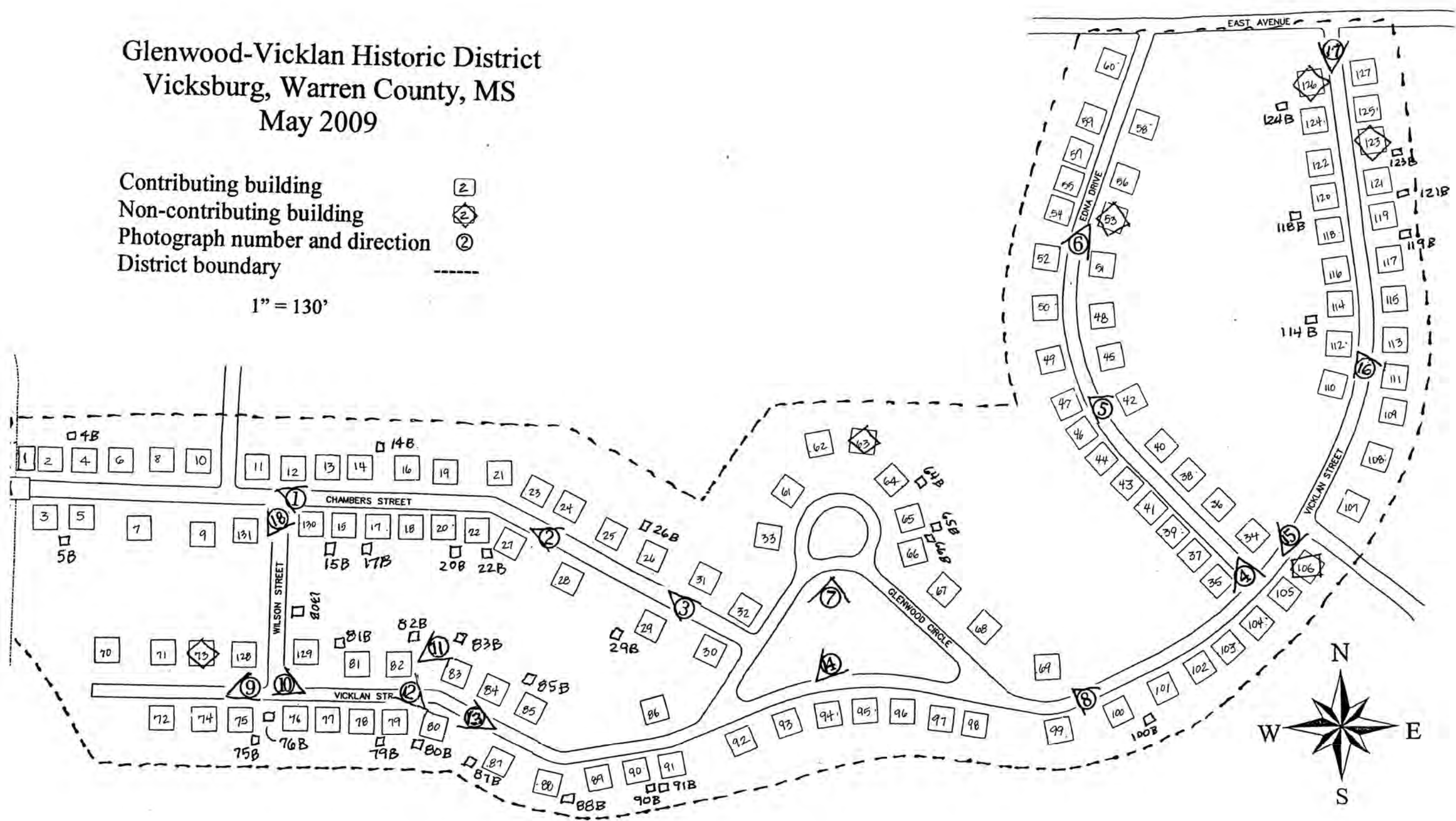


Glenwood-Vicklan Historic District  
Vicksburg, Warren County, MS

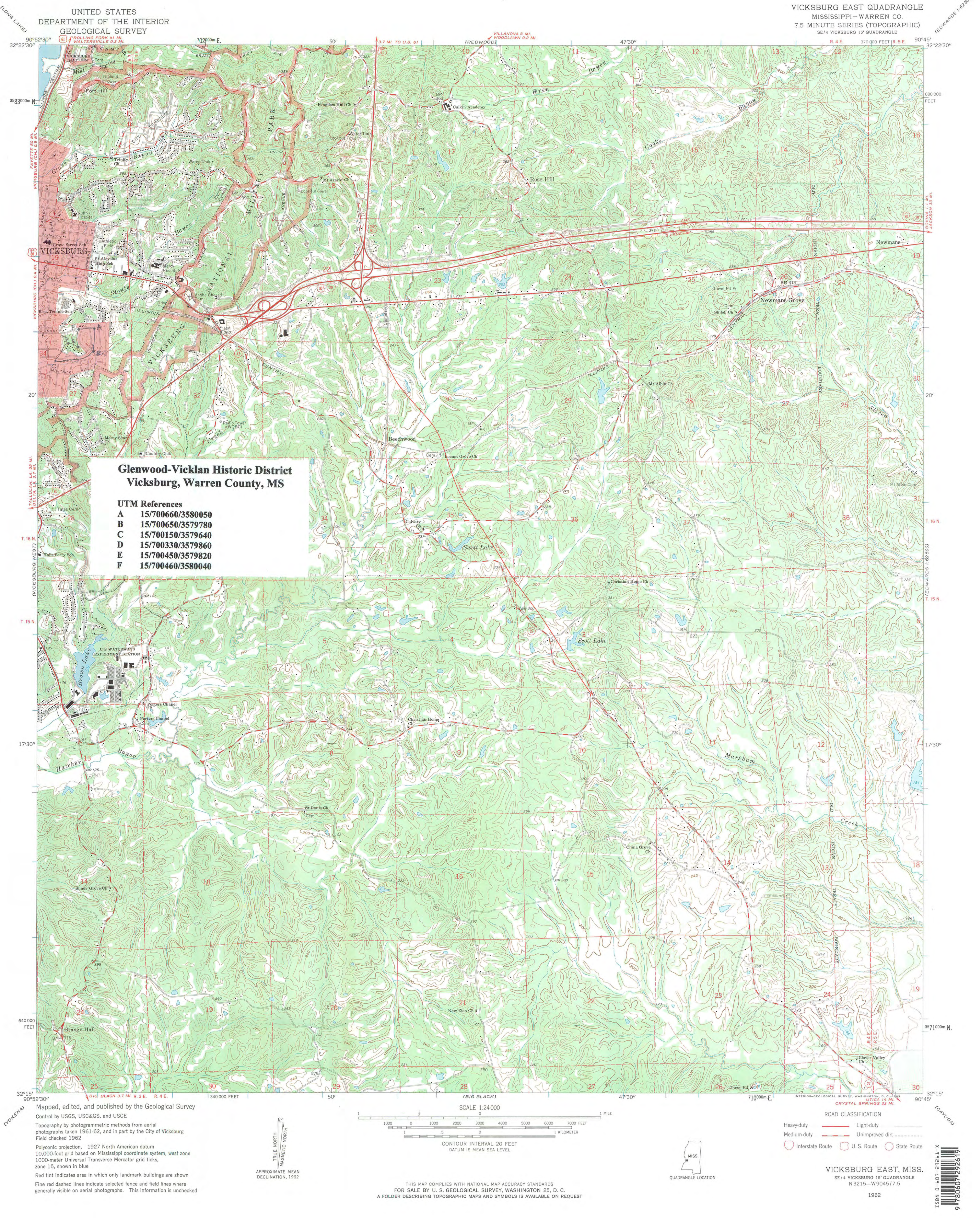
May 2009

- Contributing building      ②  
Non-contributing building      ②  
Photograph number and direction      ②  
District boundary      -----

1" = 130'







UNITED STATES  
DEPARTMENT OF THE INTERIOR  
GEOLOGICAL SURVEY

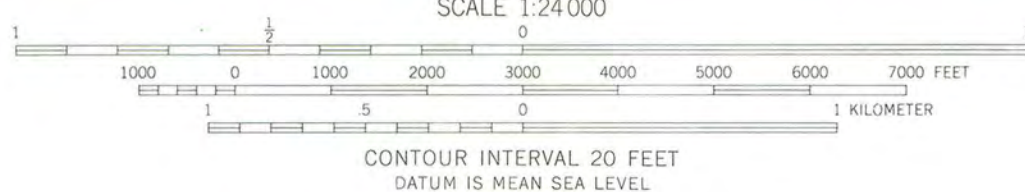
VICKSBURG EAST QUADRANGLE  
MISSISSIPPI - WARREN CO.  
7.5 MINUTE SERIES (TOPOGRAPHIC)  
SE 1/4 VICKSBURG 15' QUADRANGLE

**Glenwood-Vicklan Historic District  
Vicksburg, Warren County, MS**

**UTM References**  
**A 15/700660/3580050**  
**B 15/700650/3579780**  
**C 15/700150/3579640**  
**D 15/700330/3579860**  
**E 15/700450/3579820**  
**F 15/700460/3580040**

Mapped, edited, and published by the Geological Survey  
Control by USGS, USC&GS, and USCE  
Topography by photogrammetric methods from aerial  
photographs taken 1961-62, and in part by the City of Vicksburg  
Field checked 1962  
Polyconic projection. 1927 North American datum  
10,000-foot grid based on Mississippi coordinate system, west zone  
1000-meter Universal Transverse Mercator grid ticks,  
zone 15, shown in blue  
Red tint indicates area in which only landmark buildings are shown  
Fine red dashed lines indicate selected fence and field lines where  
generally visible on aerial photographs. This information is unchecked

TRUE NORTH  
MAGNETIC NORTH  
APPROXIMATE MEAN  
DECLINATION, 1962



THIS MAP COMPLIES WITH NATIONAL MAP ACCURACY STANDARDS  
FOR SALE BY U. S. GEOLOGICAL SURVEY, WASHINGTON 25, D. C.  
A FOLDER DESCRIBING TOPOGRAPHIC MAPS AND SYMBOLS IS AVAILABLE ON REQUEST



**ROAD CLASSIFICATION**  
Heavy-duty ——— Light-duty ———  
Medium-duty ——— Unimproved dirt ———  
○ Interstate Route □ U.S. Route ○ State Route

**VICKSBURG EAST, MISS.**  
SE 1/4 VICKSBURG 15' QUADRANGLE  
N 3215 - W 9045 / 7.5

1962







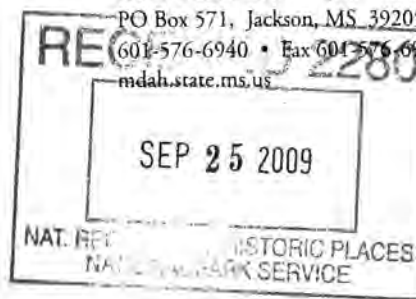
HISTORIC PRESERVATION

Ken P'Pool, director • Jim Woodrick, acting director

PO Box 571, Jackson, MS 39205-0571

(601) 576-6940 • Fax (601) 576-6955

mdah.state.ms.us



September 22, 2009

Dr. Janet Snyder Matthews

Keeper of the National Register of Historic Places and Associate Director for Cultural Resources

National Park Service

1201 Eye Street, NW (2280)

Washington, D.C. 20005

Dear Dr. Matthews:

We are pleased to enclose the nomination form and supporting documents to nominate the following property to the National Register of Historic Places:

Alexander Teen Center, Lincoln County, Mississippi

Glenwood-Vicklan Historic District, Warren County

Vaiden High School, Carroll County, Mississippi

Wiener House at 228 Ridge Drive, Hinds County, Mississippi

The properties were approved for nomination by the Mississippi Historic Preservation Professional Review Board at its meeting on September 17, 2009. The Review Board also recommended the following property be removed from the National Register of Historic Places:

Armour Company Smokehouse and Distribution Plant, Hinds County, Mississippi

We trust you will find the enclosed materials in order and will let us hear from you at your convenience.

Sincerely,

A handwritten signature in black ink, appearing to read 'Will M. P'Pool'.

Kenneth H. P'Pool

Deputy State Historic Preservation Officer

By: William M. Gatlin

National Register Coordinator



HISTORIC PRESERVATION

Ken P'Pool, director • Jim Woodrick, acting director  
PO Box 571, Jackson, MS 39205-0571  
601-576-6940 • Fax 601-576-6955  
mdah.state.ms.us

November 30, 2009

Mr. James Gabbert  
National Register of Historic Places  
National Park Service  
1201 Eye Street, NW (2280)  
Washington, D.C. 20005

Re: Glenwood-Vicklan Historic District, Vicksburg, Warren County, Mississippi

Dear Jim:

Enclosed please find the new map for the Glenwood-Vicklan Historic District that shows a scale of 1:130.

Sincerely,  
  
William M. Gatlin

National Register Coordinator