

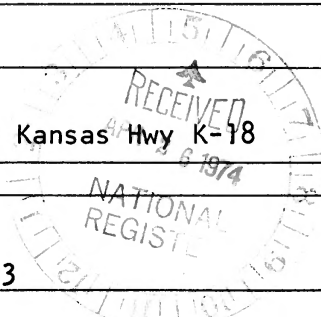


UNITED STATES DEPARTMENT OF THE INTERIOR
NATIONAL PARK SERVICE

**NATIONAL REGISTER OF HISTORIC PLACES
PROPERTY PHOTOGRAPH FORM**

(Type all entries - attach to or enclose with photograph)

1. NAME		
COMMON Building No. 3, Post Chapel (St. Mary's Chapel)	AND/OR HISTORIC Old Post Chapel	NUMERIC CODE (Assigned by NPS) 20-061 MAY 1 1974
2. LOCATION		
STATE Kansas	COUNTY Geary	TOWN Junction City
STREET AND NUMBER 4 miles northeast of Junction City on Kansas Hwy K-18		
3. PHOTO REFERENCE		
PHOTO CREDIT Audio-Visual Division Director of Com-Elec Fort Riley, Kansas	DATE 1973	NEGATIVE FILED AT Audio-Visual Division Director of Com-Elec Fort Riley, Kansas
4. IDENTIFICATION		



DESCRIBE VIEW, DIRECTION, ETC.

View from Barry Avenue in a northeasterly direction. Constructed in 1855 for Post Chapel.

(See Continuation Sheet)

PROPERTY OF THE NATIONAL REGISTER

#1 of 19 photos

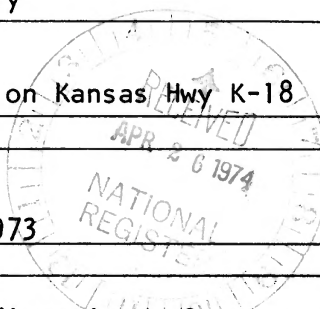


UNITED STATES DEPARTMENT OF THE INTERIOR
NATIONAL PARK SERVICE

**NATIONAL REGISTER OF HISTORIC PLACES
PROPERTY PHOTOGRAPH FORM**

(Type all entries - attach to or enclose with photograph)

1. NAME		
COMMON	AND/OR HISTORIC	NUMERIC CODE <i>(Assigned by NPS)</i>
Buffalo Corral	Hay Corral (Storage)	20-061 MAY 1 1974
2. LOCATION		
STATE	COUNTY	TOWN
Kansas	Geary	Junction City
STREET AND NUMBER		
4 miles northeast of Junction City on Kansas Hwy K-18		
3. PHOTO REFERENCE		
PHOTO CREDIT	DATE	NEGATIVE FILED AT
Audio-Visual Division Director of Com-Elec Fort Riley, Kansas	1973	Audio-Visual Division Director of Com-Elec Fort Riley, Kansas



4. IDENTIFICATION
DESCRIBE VIEW, DIRECTION, ETC.

View from K-18 in a southeasterly direction. Constructed prior to 1878 for Hay Storage. The Stables were then wooden and there were loose animals on Post. The stone wall was to keep out these and other animals.

(See Continuation Sheet)

PROPERTY OF THE NATIONAL REGISTER

#2 of 19 photos

0115



UNITED STATES DEPARTMENT OF THE INTERIOR
NATIONAL PARK SERVICE

**NATIONAL REGISTER OF HISTORIC PLACES
PROPERTY PHOTOGRAPH FORM**

(Type all entries - attach to or enclose with photograph)

1. NAME

COMMON

AND/OR HISTORIC

NUMERIC CODE *(Assigned by NPS)*

Ogden Monument

Ogden Monument

20-061

MAY 1 1974

2. LOCATION

STATE

Kansas

COUNTY

Geary

TOWN

Junction City

STREET AND NUMBER

4 miles northeast of Junction City on Kansas Hwy K-18

3. PHOTO REFERENCE

PHOTO CREDIT

Audio-Visual Division
Director of Com-Elec
Fort Riley, Kansas

DATE

1956

NEGATIVE FILED AT

Audio-Visual Division
Director of Com-Elec
Fort Riley, Kansas

4. IDENTIFICATION

DESCRIBE VIEW, DIRECTION, ETC.

View from Hwy K-18 in a southerly direction. Constructed in 1926 (approx) of native limestone and named in honor of Major E. A. Ogden, the man appointed to build the Post.

(See continuation Sheet)

PROPERTY OF THE NATIONAL REGISTER

#3 of 19 photos

JN64



UNITED STATES DEPARTMENT OF THE INTERIOR
NATIONAL PARK SERVICE

NATIONAL REGISTER OF HISTORIC PLACES
PROPERTY PHOTOGRAPH FORM

(Type all entries - attach to or enclose with photograph)

1. NAME

COMMON Quarters No. 123, Field Grade Officers's Quarters	AND/OR HISTORIC Old Chaplain's Quarters	NUMERIC CODE (Assigned by NPS) 20-061 MAY 1 1974
--	--	--

2. LOCATION

STATE Kansas	COUNTY Geary	TOWN Junction City
-----------------	-----------------	-----------------------

STREET AND NUMBER

4 miles northeast of Junction City on Kansas Hwy K-18

3. PHOTO REFERENCE

PHOTO CREDIT Audio-Visual Division Director of Com-Elec Fort Riley, Kansas	DATE 1958	NEGATIVE FILED AT Audio-Visual Division Director of Com-Elec Fort Riley, Kansas
---	--------------	--

4. IDENTIFICATION

DESCRIBE VIEW, DIRECTION, ETC.

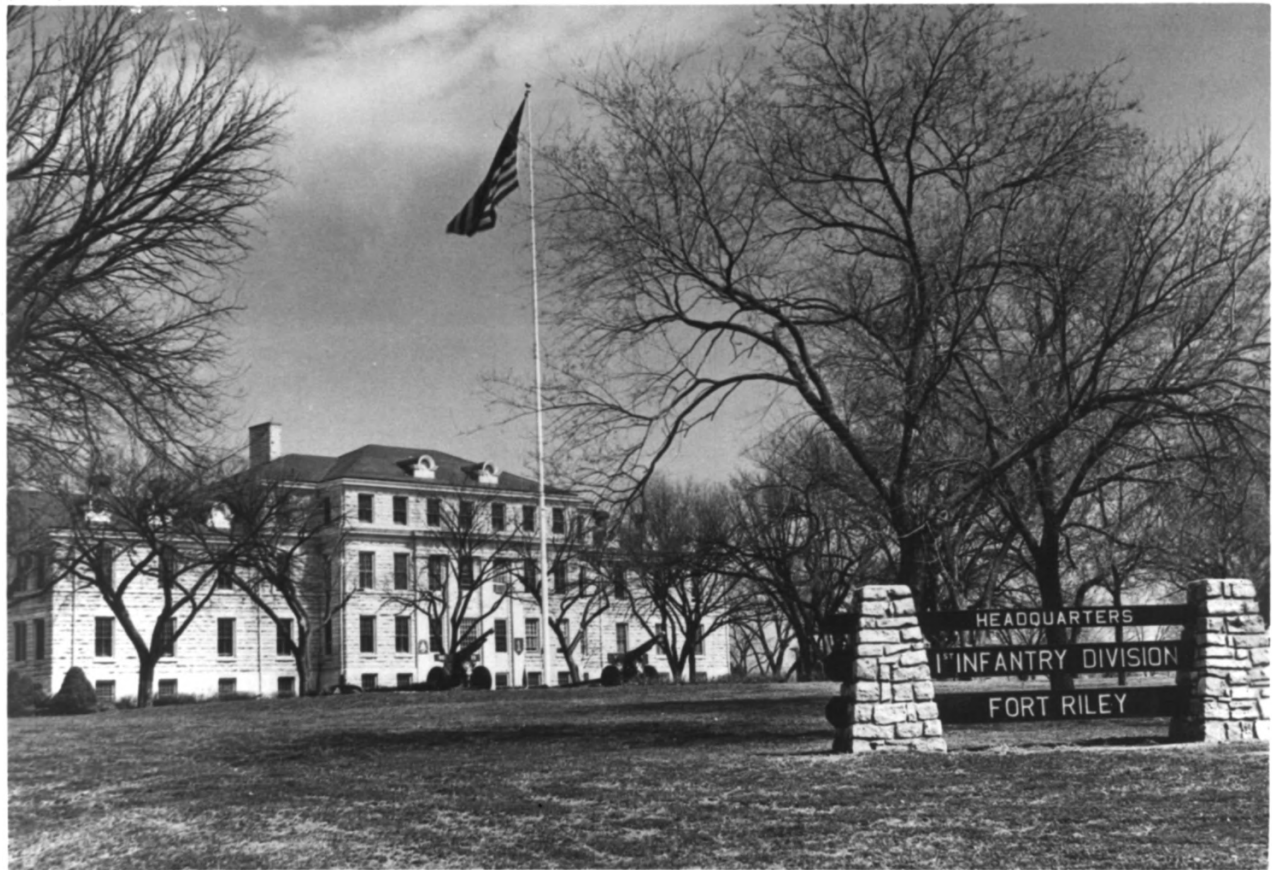
View from Hwy K-18 in a northwesterly direction. Constructed in 1855 as the Chaplain's Quarters.

(See Continuation Sheet)

PROPERTY OF THE NATIONAL REGISTER

#5 of 19 photos

one 7



HEADQUARTERS
1st INFANTRY DIVISION
FORT RILEY

UNITED STATES DEPARTMENT OF THE INTERIOR
NATIONAL PARK SERVICE

**NATIONAL REGISTER OF HISTORIC PLACES
PROPERTY PHOTOGRAPH FORM**

(Type all entries - attach to or enclose with photograph)

1. NAME

COMMON Building 108, Post Headquarters (Summerall Hall)	AND/OR HISTORIC Old Post Hospital	NUMERIC CODE <i>(Assigned by NPS)</i> 20-061 MAY 1 1974
--	--------------------------------------	---

2. LOCATION

STATE Kansas	COUNTY Geary	TOWN Junction City
-----------------	-----------------	-----------------------

STREET AND NUMBER

4 miles northeast of Junction City on Kansas Hwy K-18

3. PHOTO REFERENCE

PHOTO CREDIT Audio-Visual Division Director of Com-Elec Fort Riley, Kansas	DATE 1961	NEGATIVE FILED AT Audio-Visual Division Director of Com-Elec Fort Riley, Kansas
---	--------------	--

4. IDENTIFICATION

DESCRIBE VIEW, DIRECTION, ETC.

The view is from Hwy K-18 in a northeasterly direction. Constructed in 1889 as the Post Hospital and converted to current use in 1948. This replaced Bldg 30 (now the Cavalry Museum) as the Post Hospital in 1890.

(See Continuation Sheet)

PROPERTY OF THE NATIONAL REGISTER

#6 of 19 photos



UNITED STATES DEPARTMENT OF THE INTERIOR
NATIONAL PARK SERVICE

**NATIONAL REGISTER OF HISTORIC PLACES
PROPERTY PHOTOGRAPH FORM**

(Type all entries - attach to or enclose with photograph)

1. NAME		
COMMON (L/R) Bldg No. 92, Bde HQ Bldg.; Bldg 90, EM Barracks	AND/OR HISTORIC Bldg No. 92, Custer Hall Bldg No. 90, Rose Hall	NUMERIC CODE <i>(Assigned by NPS)</i> 20-061 MAY 1 1974
2. LOCATION		
STATE Kansas	COUNTY Geary	TOWN Junction City
STREET AND NUMBER		
4 miles northeast of Junction City on Kansas Hwy K-18		
3. PHOTO REFERENCE		
PHOTO CREDIT Audio-Visual Division Director of Comm-Elec Fort Riley, Kansas	DATE 1973	NEGATIVE FILED AT Audio-Visual Division Director of Com-Elec Fort Riley, Kansas
4. IDENTIFICATION		

DESCRIBE VIEW, DIRECTION, ETC.

View from Godfrey Avenue across Artillery Parade Field in a southwesterly direction. Bldg No. 92, constructed in 1889, Artillery Administration, Bldg No. 90 in 1903, Artillery Barracks.

(See Continuation Sheet)

PROPERTY OF THE NATIONAL REGISTER

#7 of 19 photos



UNITED STATES DEPARTMENT OF THE INTERIOR
NATIONAL PARK SERVICE
NATIONAL REGISTER OF HISTORIC PLACES
PROPERTY PHOTOGRAPH FORM

(Type all entries - attach to or enclose with photograph)

1. NAME		
COMMON Building No. 60, Cavalry Stable	AND/OR HISTORIC Cavalry Stable	NUMERIC CODE <i>(Assigned by NPS)</i> 20-061 MAY 1 1974
2. LOCATION		
STATE Kansas	COUNTY Geary	TOWN Junction City
STREET AND NUMBER 4 miles northeast of Junction City on Kansas Hwy K-18		
3. PHOTO REFERENCE		
PHOTO CREDIT Audio-Visual Division Director of Com-Elec Fort Riley, Kansas	DATE 1973	NEGATIVE FILED AT Audio-Visual Division Director of Com-Elec Fort Riley, Kansas
4. IDENTIFICATION		

DESCRIBE VIEW, DIRECTION, ETC.

View from Cameron Avenue in a southeasterly direction. Constructed in 1889 for a Cavalry Stable. This was a part of the Main Cavalry Stable line.

(See Continuation Sheet)

PROPERTY OF THE NATIONAL REGISTER

#8 of 19 photos



UNITED STATES DEPARTMENT OF THE INTERIOR
NATIONAL PARK SERVICE

**NATIONAL REGISTER OF HISTORIC PLACES
PROPERTY PHOTOGRAPH FORM**

(Type all entries - attach to or enclose with photograph)

1. NAME		
COMMON	AND/OR HISTORIC	NUMERIC CODE <i>(Assigned by NPS)</i>
Commissary (Main)	West Riding Hall	20-061 MAY 1 1974
2. LOCATION		
STATE	COUNTY	TOWN
Kansas	Geary	Junction City
STREET AND NUMBER		
4 miles northeast of Junction City on Kansas Hwy K-18		
3. PHOTO REFERENCE		
PHOTO CREDIT	DATE	NEGATIVE FILED AT
Audio-Visual Division Director of Comm-Elec Fort Riley, Kansas	1973	Audio-Visual Division Director of Comm-Elec Fort Riley, Kansas

4. IDENTIFICATION
DESCRIBE VIEW, DIRECTION, ETC.

View from Custer Avenue in a northwesterly direction. Constructed for Equestrian Training (riding hall) in 1908. Converted to present use in 1972. This was one of the two larger riding halls in the world and permitted all winter mounted instruction.

(See Continuation Sheet)

PROPERTY OF THE NATIONAL REGISTER

49 of 19 photos



UNITED STATES DEPARTMENT OF THE INTERIOR
NATIONAL PARK SERVICE

**NATIONAL REGISTER OF HISTORIC PLACES
PROPERTY PHOTOGRAPH FORM**

(Type all entries - attach to or enclose with photograph)

1. NAME

COMMON Bldg No. 165, EM Barracks (w/mess facilities)	AND/OR HISTORIC Thorne Hall	NUMERIC CODE <i>(Assigned by NPS)</i> 20-061 MAY 1 1974
--	--------------------------------	---

2. LOCATION

STATE Kansas	COUNTY Geary	TOWN Junction City
-----------------	-----------------	-----------------------

STREET AND NUMBER

4 miles northeast of Junction City on Kansas Hwy, K-18

3. PHOTO REFERENCE

PHOTO CREDIT Audio-Visual Division Director of Com-Elec Fort Riley, Kansas	DATE 1956	NEGATIVE FILED AT Audio-Visual Division Director of Com-Elec Fort Riley, Kansas
---	--------------	--

4. IDENTIFICATION

DESCRIBE VIEW, DIRECTION, ETC.

View from Custer Avenue in a northeasterly direction. Constructed in 1908 as a 2-Company Barracks for cooks and bakers.

(See Continuation Sheet)

PROPERTY OF THE NATIONAL REGISTER

#10 of 19 photos

INCL 12

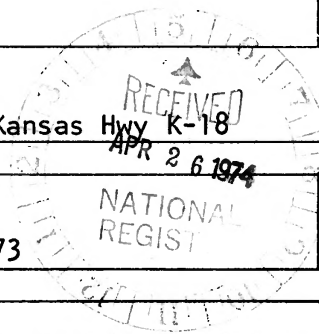


UNITED STATES DEPARTMENT OF THE INTERIOR
NATIONAL PARK SERVICE

**NATIONAL REGISTER OF HISTORIC PLACES
PROPERTY PHOTOGRAPH FORM**

(Type all entries - attach to or enclose with photograph)

1. NAME		
COMMON (L/R) Bldgs Nos. 146, 38 & 39, EM Barracks	AND/OR HISTORIC None	NUMERIC CODE <i>(Assigned by NPS)</i> 20-061 MAY 1 1974
2. LOCATION		
STATE Kansas	COUNTY Geary	TOWN Junction City
STREET AND NUMBER		
4 miles northeast of Junction City on Kansas Hwy K-18		
3. PHOTO REFERENCE		
PHOTO CREDIT Audio-Visual Division Director of Com-Elec Fort Riley, Kansas	DATE 1973	NEGATIVE FILED AT Audio-Visual Division Director of Com-Elec Fort Riley, Kansas



4. IDENTIFICATION
DESCRIBE VIEW, DIRECTION, ETC.
View from Sheridan Avenue across Cavalry Parade Field in a southwesterly direction.
Construction: Bldg No. 39, 1886; Bldg 38, 1887 and Bldg No. 146, 1903, all were
constructed for Cavalry Barracks.

(See Continuation Sheet)

PROPERTY OF THE NATIONAL REGISTER

#11 of 19 photos

INCL 13



UNITED STATES DEPARTMENT OF THE INTERIOR
NATIONAL PARK SERVICE

NATIONAL REGISTER OF HISTORIC PLACES
PROPERTY PHOTOGRAPH FORM

(Type all entries - attach to or enclose with photograph)

1. NAME

COMMON Bldg No. 801, Post Headquarters Annex (Patton Hall)	AND/OR HISTORIC Academic Building, Cavalry School	NUMERIC CODE (Assigned by NPS) 20-061 MAY 1 1974
--	---	--

2. LOCATION

STATE Kansas	COUNTY Geary	TOWN Junction City
-----------------	-----------------	-----------------------

STREET AND NUMBER

4 miles northeast of Junction City on Kansas Hwy K-18

3. PHOTO REFERENCE

PHOTO CREDIT Audio-Visual Division Director of Com-Elec Fort Riley, Kansas	DATE Unknown	NEGATIVE FILED AT Audio-Visual Division Director of Com-Elec Fort Riley, Kansas
---	-----------------	--

4. IDENTIFICATION

DESCRIBE VIEW, DIRECTION, ETC.

View from Henry Avenue in an easterly direction. Constructed in 1940 as an Academic Building and has been used as a headquarters building since 1950 (approx).

(See Continuation Sheet)

PROPERTY OF THE NATIONAL REGISTER

#12 of 19 photos



UNITED STATES DEPARTMENT OF THE INTERIOR
NATIONAL PARK SERVICE

**NATIONAL REGISTER OF HISTORIC PLACES
PROPERTY PHOTOGRAPH FORM**

(Type all entries - attach to or enclose with photograph)

1. NAME		
COMMON Building No. 30, Cavalry Museum	AND/OR HISTORIC Old Post Hospital Old Post Headquarters	NUMERIC CODE <i>(Assigned by NPS)</i> 20-061 MAY 1 1974
2. LOCATION		
STATE Kansas	COUNTY Geary	TOWN Junction City
STREET AND NUMBER		
4 miles northeast of Junction City on Kansas Hwy K-18		
3. PHOTO REFERENCE		
PHOTO CREDIT Audio-Visual Division Director of Com-Elec Fort Riley, Kansas	DATE 1956	NEGATIVE FILED AT Audio-Visual Division Director of Com-Elec Fort Riley, Kansas
4. IDENTIFICATION		

DESCRIBE VIEW, DIRECTION, ETC.

View from Sheridan Avenue in a southerly direction. Constructed in 1855 as Original Hospital of the Post; converted in 1890 to Post Headquarters; briefly after WWII the library, and since 1957 the U. S. Cavalry Museum.

(See Continuation Sheet)

PROPERTY OF THE NATIONAL REGISTER

#13 of 19 photos

INCL 15



UNITED STATES DEPARTMENT OF THE INTERIOR
NATIONAL PARK SERVICE

**NATIONAL REGISTER OF HISTORIC PLACES
PROPERTY PHOTOGRAPH FORM**

(Type all entries - attach to or enclose with photograph)

1. NAME

COMMON Building No. 34, NCO Academy (Wainwright Hall)	AND/OR HISTORIC Student Officer Barracks & Mess and before that Academic Bldg, Cav Sch	NUMERIC CODE <i>(Assigned by NPS)</i> 20-061 MAY 1 1974
---	--	---

2. LOCATION

STATE Kansas	COUNTY Geary	TOWN Junction City
-----------------	-----------------	-----------------------

STREET AND NUMBER

4 miles northeast of Junction City on Kansas Hwy 418

3. PHOTO REFERENCE

PHOTO CREDIT Audio-Visual Division Director of Com-Elec Fort Riley, Kansas	DATE 1956	NEGATIVE FILED AT Audio-Visual Division Director of Com-Elec Fort Riley, Kansas
---	------------------	--

4. IDENTIFICATION

DESCRIBE VIEW, DIRECTION, ETC.

View from Sheridan Avenue in a southerly direction. Constructed in 1946 as an Academic Building and is currently used as the Fifth Army NCO Academy.

(See Continuation Sheet)

PROPERTY OF THE NATIONAL REGISTER

15 of 19 photos

INCL 17



UNITED STATES DEPARTMENT OF THE INTERIOR
NATIONAL PARK SERVICE

**NATIONAL REGISTER OF HISTORIC PLACES
PROPERTY PHOTOGRAPH FORM**

(Type all entries - attach to or enclose with photograph)

1. NAME		
COMMON Building No. 24, Quarters Nos. 24-A & 24-B	AND/OR HISTORIC Custer's Home, Quarters No. 24-A	NUMERIC CODE <i>(Assigned by NPS)</i> 20-061 MAY 1 1974
2. LOCATION		
STATE Kansas	COUNTY Geary	TOWN Junction City
STREET AND NUMBER		
4 miles northeast of Junction City on Kansas Hwy K-18		
3. PHOTO REFERENCE		
PHOTO CREDIT Audio-Visual Division Director of Com-Elec Fort Riley, Kansas	DATE 1963	NEGATIVE FILED AT Audio-Visual Division Director of Com-Elec Fort Riley, Kansas
4. IDENTIFICATION		

DESCRIBE VIEW, DIRECTION, ETC.

View from Sheridan Avenue in a northeasterly direction. Constructed in 1855 for Double Officers Quarters and currently used for Company Grade Officer's Quarters. Quarters 24-A was General Custer's quarters during his assignment at Fort Riley after the Civil War.

(See Continuation Sheet)

PROPERTY OF THE NATIONAL REGISTER

#16 OF 19 photos



UNITED STATES DEPARTMENT OF THE INTERIOR
NATIONAL PARK SERVICE

**NATIONAL REGISTER OF HISTORIC PLACES
PROPERTY PHOTOGRAPH FORM**

(Type all entries - attach to or enclose with photograph)

1. NAME		
COMMON	AND/OR HISTORIC	NUMERIC CODE <i>(Assigned by NPS)</i>
Forsyth Avenue	Forsyth Avenue/Officers Row	20-061 MAY 1 1974
2. LOCATION		
STATE	COUNTY	TOWN
Kansas	Geary	Junction City
STREET AND NUMBER		
4 miles northeast of Junction City on Kansas Hwy K-18		
3. PHOTO REFERENCE		
PHOTO CREDIT	DATE	NEGATIVE FILED AT
Audio-Visual Division Director of Com-Elec Fort Riley, Kansas	Unknown	Audio-Visual Division Director of Com-Elec Fort Riley, Kansas
4. IDENTIFICATION		

DESCRIBE VIEW, DIRECTION, ETC.
View from Old Trooper Monument northerly to Commander's Quarters, Building No. 1.

(See Continuation Sheet)

PROPERTY OF THE NATIONAL REGISTER

#18 of 19 photos



UNITED STATES DEPARTMENT OF THE INTERIOR
NATIONAL PARK SERVICE

**NATIONAL REGISTER OF HISTORIC PLACES
PROPERTY PHOTOGRAPH FORM**

(Type all entries - attach to or enclose with photograph)

1. NAME		
COMMON Quarters No. 1, Building No. Commander's Quarters	AND/OR HISTORIC , None	NUMERIC CODE <i>(Assigned by NPS)</i> 20-061 MAY 1 1974
2. LOCATION		
STATE Kansas	COUNTY Geary	TOWN Junction City
STREET AND NUMBER		
4 miles northeast of Junction City on Kansas Hwy K-18		
3. PHOTO REFERENCE		
PHOTO CREDIT Audio-Visual Division Director of Com-Elec Fort Riley, Kansas	DATE APR 26 1974 Unknown	NEGATIVE FILED AT Audio-Visual Division Director of Com-Elec Fort Riley, Kansas
4. IDENTIFICATION		

DESCRIBE VIEW, DIRECTION, ETC.

View from Barry Avenue in a northeasterly direction. Constructed in 1887 for Commanding Officer's Quarters. The commander's quarters looks down "Officers Row" in a southerly direction toward "Old Trooper Monument".

(See Continuation Sheet)

PROPERTY OF THE NATIONAL REGISTER
#19 of 19 photos

INCL 21



14040-1942-3293/AL68-

FT RILEY

Custer's Home, Building #24, Fort Riley,
Kansas, looking Northeast.

Frank W. Frasure, DAC
Post Photographic Lab
Fort Riley, Kansas

20 June 68

Publication or commercial use of this
photograph requires release by a U. S.
Army Information Officer. Credit
"U. S. Army Photograph".



14040-1942-3290/AL68-

FT RILEY

Custer's Home, Building #24, Fort Riley,
Kansas, looking Southwest.

Frank W. Frasure, DAC
Post Photographic Lab
Fort Riley, Kansas

20 June 68

Publication or commercial use of this
photograph requires release by a U. S.
Army Information Officer. Credit
"U. S. Army Photograph".



14040-1942-3286/AL68-

FT RILEY

Guster's Home, Building #24, Fort Riley,
Kansas, looking North.

Frank W. Frasure, DAC
Post Photographic Lab
Fort Riley, Kansas

20 June 68

Publication or commercial use of this
photograph requires release by a U. S.
Army Information Officer. Credit
"U. S. Army Photograph".



14040-1942-3289/AL68-

FT RILEY

Custer's Home, Building #24, Fort Riley,
Kansas, looking North.

Frank W. Frasure, DAC
Post Photographic Lab
Fort Riley, Kansas

20 June 68

Application or commercial use of this
photograph requires release by a U. S.
Army Information Officer. Credit
"U. S. Army Photograph".



14040-1942-3287/AL68-

FT. RILEY

Custer's Home, Building #24, Fort Riley,
Kansas, looking North.

Frank M. Frasure, DAC
Post Photographic Lab
Fort Riley, Kansas

20 June 68

Publication or commercial use of this
photograph requires release by a U. S.
Army Information Officer. Credit
"U. S. Army Photograph".



14040-1942-3292/AL68-

FT RILEY

Custer's Home, Building #24, Fort Riley,
Kansas, looking Northwest.

Frank W. Frasure, DAC
Post Photographic Lab
Fort Riley, Kansas

20 June 68

Publication or commercial use of this
photograph requires release by a U. S.
Army Information Officer. Credit
"U. S. Army Photograph".



CUSTER'S HOME

14040-1942-3288/AL68-

FT RILEY

Custer's Home, Building #24, Fort Riley,
Kansas, looking North.

Frank W. Frasure, DAC.
Post Photographic Lab
Fort Riley, Kansas

20 June 68

Publication or commercial use of this
photograph requires release by a U. S.
Army Information Officer. Credit
"U. S. Army Photograph".



14040-1942-3291/AL68-

FT RILEY

Custer's Home, Building #24, Fort Riley,
Kansas, looking South.

Frank W. Frasure, DAC
Post Photographic Lab
Fort Riley, Kansas

20 June 68

Publication or commercial use of this
photograph requires release by a U. S.
Army Information Officer. Credit
"U. S. Army Photograph".