



HOKUKANO-UALAPUE NHL

Photograph 1

View north. Kahokukano and Pakui Heiau on high ridge (right); Kapioho Heiau in gulch (left). Photo by J. F. G. Stokes, 1909. Bernice P. Bishop Museum Negative 989.

Neg. No.: 989

Credit Line: BISHOP MUSEUM
STOKES

This photo is issued by the BISHOP MUSEUM with the understanding that it is for research or personal use only. Written permission must be obtained for any other purposes.

HEIAU, KAHUKUKANO,
MOLOKAI. 1909



HOKUKANO-UALAPUE NHL

Photograph 2:

View north. Closeup: Kahokukano Heiau
(foreground) and Pakui Heiau (background).
Photo by J. F. G. Stokes, 1909. Bernice P.
Bishop Museum Negative 1111.

Neg. No.: 1111

Credit Line: BISHOP MUSEUM
STOKES

This photo is issued by the BISHOP MUSEUM
with the understanding that it is for research or
personal use only. Written permission must be
obtained for any other purposes.

HEIAU PAKUI, MOLOKAI.
1909



HOKUKANO-UALAPUE NHL

Photograph 3

View north. Pakui Heiau. Photo by J. F. G.
Stokes, 1909. Bernice P. Bishop Museum
Negative 1112.

Neg. No.: 1112

Credit Line: BISHOP MUSEUM
STOKES

This photo is issued by the BISHOP MUSEUM
with the understanding that it is for research or
personal use only. Written permission must be
obtained for any other purposes.

HEIAU OF PAKUI, MOLOKAI.
1909



HOKUKANO-UALAPUE NHL

Photograph 4

View east. Pakui Heiau. Photo by Earl
Neller, Office of Hawaiian Affairs, September
23, 1987.



HOKUKANO-UALAPUE NHL

Photograph 5

View west. Pakui Heiau. Photo by Earl
Neller, Office of Hawaiian Affairs, September
23, 1987.



HOKUKANO-UALAPUE NHL

Photograph 6

View east. Kahokukano Heiau, fourth terrace.
Photo by Earl Neller, Office of Hawaiian
Affairs, September 23, 1987.



HOKUKANO-UALAPUE NHL

Photograph 7

View west. Kahokukano Heiau, south retaining wall of third terrace. Photo by Earl Neller, Office of Hawaiian Affairs, September 23, 1987.



HOKUKANO-UALAPUE NHL

Photograph 8

Aerial view (to west) of Kaluakapi'ioho
Heiau taken from Kahokukano Heiau. Photo
by J. F. G. Stokes, 1909. Bernice P.
Bishop Museum Negative 1108.

Neg. No: 1108

Credit Line: BISHOP MUSEUM

This photo is issued by the BISHOP MUSEUM
with the understanding that it is for research or
personal use only. Written permission must be
obtained for any other purposes.

HEIAU KAPIOHO
MOLOKAI



HOKUKANO-UALAPUE NHL

Photograph 9

Aerial view (to west) of Kaluakapi'ioho Heiau taken from Kahokukano Heiau. Photo by Earl Neller, Office of Hawaiian Affairs, September 23, 1987.



HOKUKANO-UALAPUE NHL

Photograph 10

View west. Kaluakapi'ioho Heiau, east wall.
Photo by J. F. G. Stokes, 1909. Bernice P.
Bishop Museum Negative 988.

Neg. No.: 988

Credit Line: BISHOP MUSEUM

STOKES

This photo is loaned by the BISHOP MUSEUM
with the understanding that it is for research or
personal use only. No other permission must be
obtained for any other purposes.

HEIAU - KAPIOHO. TAKEN FROM
KAHUKUKANO, MOLOKAI, 1909.



HOKUKANO-UALAPUE NHL

Photograph 11

View north. Kaluakapi'ioho Heiau, south wall. Photo by J. F. G. Stokes, 1909.
Bernice P. Bishop Museum Negative 987.

Neg. No.: 987

Credit Line: BISHOP MUSEUM

STOKES

This photo is issued by the BISHOP MUSEUM with the understanding that it is for research or personal use only. Written permission must be obtained for any other purposes.

HEIAU KAPIOHO OHIA, MOLOKAI.
1909



HOKUKANO-UALAPUE NHL

Photograph 12

View north. Kaluakapi'ioho Heiau, south wall. Photo by Earl Neller, Office of Hawaiian Affairs, September 23, 1987.



HOKUKANO-UALAPUE NHL

Photograph 13

View east. Pu'u 'Olelo Heiau. Photo by
Earl Neller, Office of Hawaiian Affairs,
September 23, 1987.



HOKUKANO-UALAPUE NHL

Photograph 14

View west. Pu'u 'Olelo Heiau. Photo by
Earl Neller, Office of Hawaiian Affairs,
September 23, 1987.



HOKUKANO-UALAPUE NHL

Photograph 15

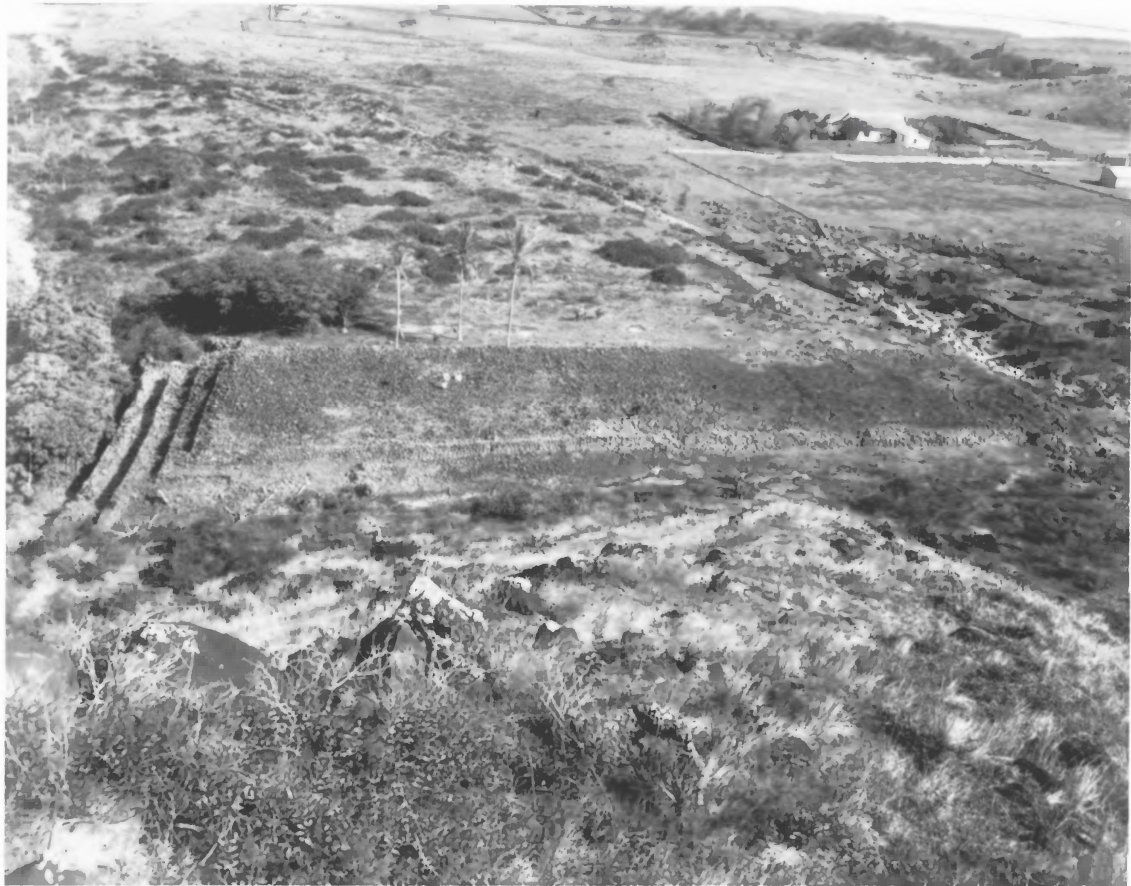
View south. Kukui Heiau, east wall. Photo by Earl Neller, Office of Hawaiian Affairs, September 23, 1987.



HOKUKANO-UALAPUE NHL

Photograph 16

View west. Kukui Heiau, interior. Photo
by Earl Neller, Office of Hawaiian Affairs,
September 23, 1987.



HOKUKANO-UALAPUE NHL

Photograph 17

Aerial view (to west). Iliiliopae Heiau.
Photo by J. F. G. Stokes, 1909. Bernice
P. Bishop Museum Negative 1124.

Neg. No.: 1124

Credit Line: BISHOP MUSEUM

STOKES

This photo is loaned by the BISHOP MUSEUM
and the user must acknowledge its use for research or
special use on all publications. Permission must be
obtained for any other use.

HEIAU, ILIILIOPOE, MAPULEHU,
MOLOKAI. 1909,



View west. Iliiliopae Heiau, south end of east wall illustrating multiple construction.

Photo by J. F. G. Stokes, 1909. Bernice P. Bishop Museum Negative 1130.

Neg. No.: 1130

Credit Line: BISHOP MUSEUM
STOKES

This photo is issued by the BISHOP MUSEUM with the understanding that it is for research or personal use only. Written permission must be obtained for any other purposes.

HEIAU ILIILIOPOE, MAPULEHU,
MOLOKAI. 1909



HOKUKANO-UALAPUE NHL

Photograph 19

View west. Iliiliopae Heiau, south end of east wall illustrating multiple terrace construction. Photo by Bernice P. Bishop Inventory Team, 1974.



HOKUKANO-UALAPUE NHL

Photograph 20

View west. Iliiliopae Heiau, south end of east wall, recently fallen trees. Photo by Earl Neller, Office of Hawaiian Affairs, September 23, 1987.



HOKUKANO-UALAPUE NHL

Photograph 21

View west. Iliiliopae Heiau, south end of east wall. Photo by Earl Neller, Office of Hawaiian Affairs, September 23, 1987.



HOKUKANO-UALAPUE NHL

Photograph 22

View east. Iliiliopae Heiau, main platform surface with filled pit and recent disturbance. Photo by Earl Neller, Office of Hawaiian Affairs, September 23, 1987.



HOKUKANO-UALAPUE NHL

Photograph 23

View east. Illiiliopae Heiau, banyan tree on main platform. Photo by Earl Neller, Office of Hawaiian Affairs, September 23, 1987.



HOKUKANO-UALAPUE NHL

Photograph 24

View north. Iliiliopae Heiau, ferns growing in pit feature. Photo by Earl Neller, Office of Hawaiian Affairs, September 23, 1987.



HOKUKANO-UALAPUE NHL

Photograph 25

View west. Iliiliopae Heiau, ti plant growing in pit feature. Photo by Earl Neller, Office of Hawaiian Affairs, September 23, 1987.



HOKUKANO-UALAPUE NHL

Photograph 26

View south from Pakui Heiau. Kahokukano Heiau in foreground; Ualapue Fishpond in background. Photo by J. F. G. Stokes, 1909. Bernice P. Bishop Museum Negative 1113.

Neg. No.: 1113

Credit Line: BISHOP MUSEUM
STOKES

This photo is issued by the BISHOP MUSEUM with the understanding that it is for research or personal use only. Written permission must be obtained for any other purposes.

HEIAU, KAHUKUKANO, MOLOKAI.
1909



HOKUKANO-UALAPUE NHL

Photograph 27

View south. Ualapue Fishpond. Photo by
Earl Neller, Office of Hawaiian Affairs,
September 23, 1987.



HOKUKANO-UALAPUE NHL

Photograph 28

View east. Ualapue Fishpond, seawall.
Photo by Bernice P. Bishop Museum
Inventory Team, 1974.



HOKUKANO-UALAPUE NHL

Photograph 29

View southwest from Pakui Heiau. Keawanui
Fishpond. Photo by Bernice P. Bishop
Museum Inventory Team, 1974.



HOKUKANO-UALAPUE NHL

Photograph 30

Keawanui Fishpond, seawall and makaha
(sluice gate). Photo by Earl Neller,
Office of Hawaiian Affairs, September 23,
1987.