

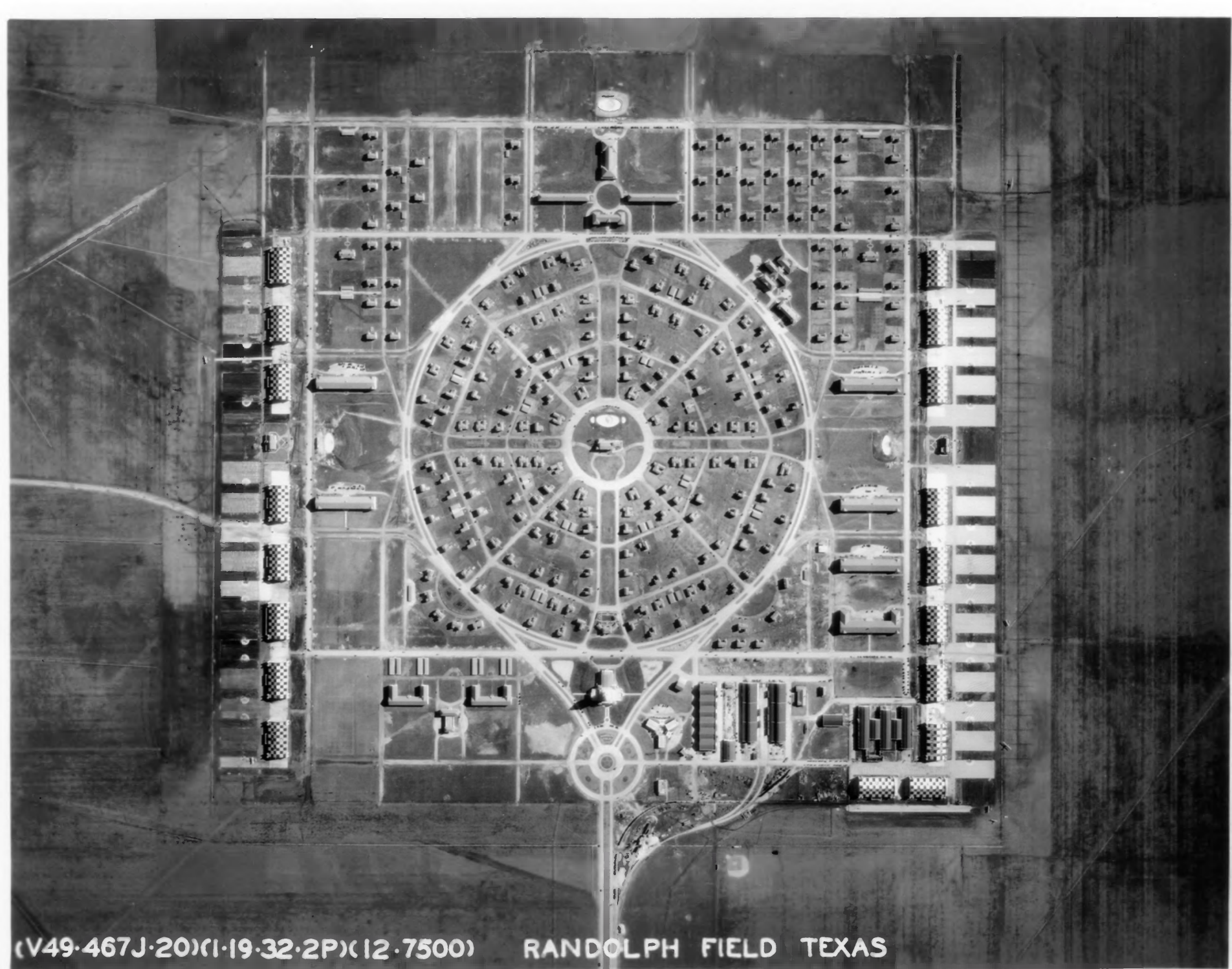


(O-298-467-J-22)(12-9-31-11A)(12-7000) - RANDOLPH FIELD - TEXAS - (LOOKING SOUTH)

1. RANDOLPH AFB TX

Ariel view of Randolph Field

from northwest looking  
south east, 1931



(V49-467J-20)(1-19-32-2P)(12-7500)

RANDOLPH FIELD TEXAS



2. RANDOLPH AFB, TX

Aerial view of Plan and Layout

1932



3. RANDOLPH AFB, TX  
Closeup aerial view of Randolph Field  
Administration Building looking  
southeast towards Flying Cadet Complex  
c. 1931



5. RANDOLPH AFB, TX

Flying Cadet Complex from southeast  
looking northeast, c. 1939





(G156-467J-20)(I-8-32-10A) CADET MESS

BLDG. 242 - RANDOLPH FIELD TEX.

6. RANDOLPH AFB, TX

Flying Cadet Administration Building  
(Cadet Mess) from southeast looking  
northeast, 1932



HOSPITAL

7. RANDOLPH AFB, TX

SCHOOL

School of Aviation Medicine,  
north facade, c. 1939





Aircraft flying over "Taj" during  
filming of "West Point of the Air"  
ca. 1934



Randolph Field Historic District  
Bexar County, Texas  
Photo No. 12

Streetscape, Outer Octagon,  
View of Facilitied 359 and  
358, towards southeast





Randolph Field Historic District  
Bexar County, Texas

Photo No. 6

Detail of original multi-light  
casement window on Facility  
900



224

THE  
MAYOR'S  
OFFICE

Randolph Field Historic District  
Bexar County, Texas

Photo No. 1

View of shop or industrial  
area towards northeast.





Randolph Field Historic District

Bexar County, Texas

Photo No. 31

Facility 900, interior

Staircase



62

Randolph Field Historic District  
Bexar County, Texas

Photo No. 45

Facility 62, view towards  
northeast