



JAN 22 1988

1. MAJOR JOHN GILMAN HOUSE
2. EXETER, NH.
3. LYNNE MONROE
4. DECEMBER, 1987
5. 5 HOBBS ROAD, KENINGTON, NH. 03833
6. NE (WEST + SOUTH ELEVATIONS OF MAIN BLOCK)
7. #1



JAN 22 1988

1. MAJOR JOHN GILMAN HOUSE
2. EXETER, NH.
3. LYNNE MONROE
4. DECEMBER, 1987
5. 5 HOBBS ROAD, ICENINGTON. NH 03833
6. SE (NORTH + WEST ELEVATIONS 7 MAIN BLOCK)
7. #2



JAN 22 1988

1. MAJOR JOHN GILMAN HOUSE

2. EXETER, NH

3. LYNNE MONROE

4. DECEMBER, 1987

5. SHOBBS ROAD, KENSINGTON, NH 03833

6. NW (SOUTH + EAST ELEVATIONS, ELLS AND BARN)

7. #3



JAN 20 1988

1. Major General ...

2. ...

3. December 1987

4. Howard ... KENSINGTON ...

5. ... (YARO)





JAN 22 1988

1. MAJOR JOHN GILMAN HOUSE
2. EXETER, NH.
3. LYNN MONROE
4. DECEMBER, 1987
5. 5 HOBBS ROAD - KEWINGTON, NH 03833
6. NE (WEST + SOUTH ELEVATIONS), CARRIAGE BARN)
7. #5



JAN 22 1988

1. MAJOR JOHN GILMAN HOUSE
2. EXETER, N.H.
3. LYNNE MONROE
4. DECEMBER, 1987
5. STUBBS ROAD, KENSINGTON, NH 03833
6. NE (WEST + SOUTH ELEVATIONS, SPRING HOUSE)
7. #6



1. MAJOR JOHN GILMAN HOUSE

2. EXETER, NH.

3. LYNNE MONROE

4. DECEMBER, 1987

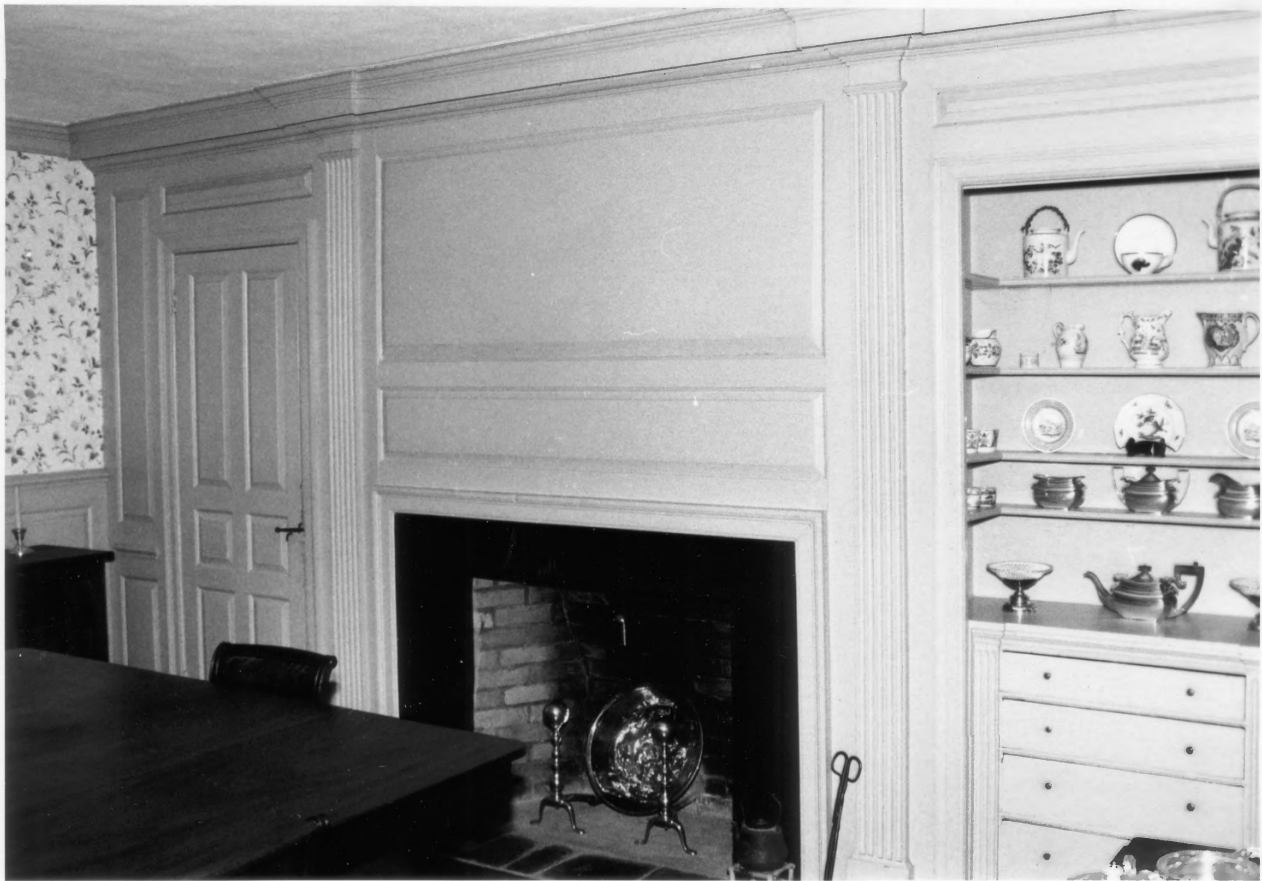
5. STOBBS ROAD, KEASINGTON, NH

6. NE - STAIRCASE

03833

7. #7

JAN 22 1988



1. MAJOR JOHN GIZMAN HOUSE

JAN 22 1988

2. EXETER, NH.

3. LYNNE MONROE

4. DECEMBER, 1987

5. 5 HOBBS ROAD, KENSINGTON, NH-03833

6. NE-DINING ROOM PANELING

7. #8