



Hawesville Historic District  
Hancock County, Kentucky

Photo 1 /Ha-H-1  
Hancock County Courthouse -  
Main facade  
Taken from the East

Jayne C. Henderson  
Green River ADD Office  
3860 US Hwy. 60-W  
Owensboro, KY 42301



Hawesville Historic District  
Hancock County, Kentucky

Photo 2 /Ha-H-1  
Hancock County Courthouse -  
Main entrance  
Taken from the East

Jayne C. Henderson  
Green River ADD Office  
3860 US Hwy. 60-W  
Owensboro, KY 42301



IMMACULA  
CAT  
CHU  
MASS TIM

Hawesville Historic District  
Hancock County, Kentucky

Photo 3 /Ha-H-1  
Hancock County Courthouse -  
south elevation  
Taken from the Southeast

Jayne C. Henderson  
Green River ADD Office  
3860 US Hwy. 60-W  
Owensboro, KY 42301



Hawesville Historic District  
Hancock County, Kentucky

Photo 4 /Ha-H-1  
Hancock County Courthouse -  
north elevation  
Taken from the North

Jayne C. Henderson  
Green River ADD Office  
3860 US Hwy. 60-W  
Owensboro, KY 42301





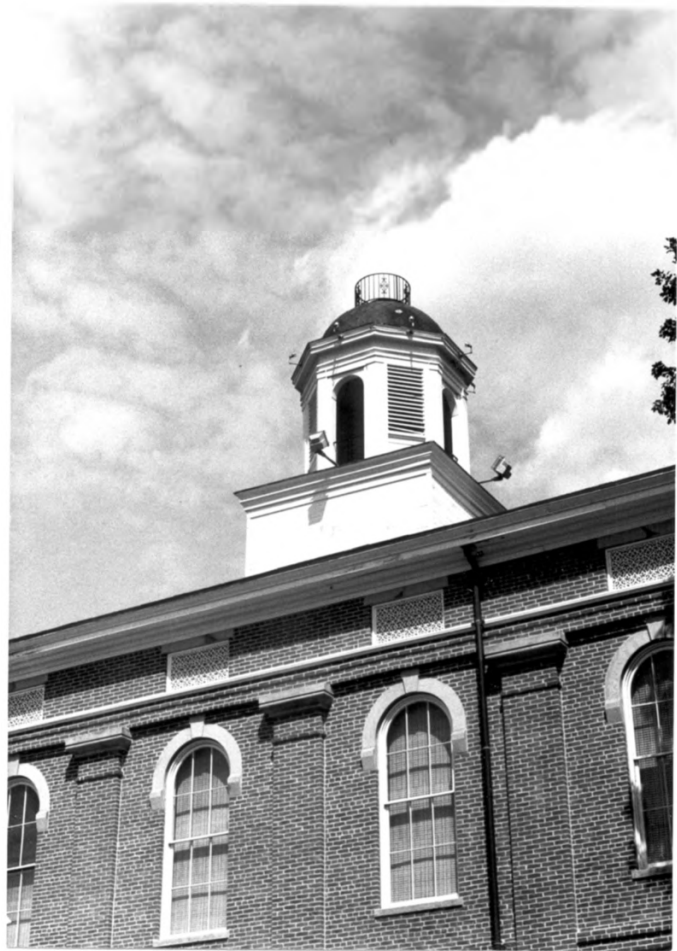
Hawesville Historic District  
Hancock County, Kentucky

Photo 5 /Ha-H-1

Hancock County Courthouse -  
rear elevation

Taken from the Southwest

Jayne C. Henderson  
Green River ADD Office  
3860 US Hwy. 60-W  
Owensboro, KY 42301



Hawesville Historic District  
Hancock County, Kentucky

Photo 6 /Ha-H-1

Hancock County Courthouse -  
bell tower

Taken from the Southwest

Jayne C. Henderson  
Green River ADD Office  
3860 US Hwy. 60-W  
Owensboro, KY 42301



Hawesville Historic District  
Hancock County, Kentucky

Photo 7 /Ha-H-2

Immaculate Concept Church  
Rectory - Main facade  
Taken from the North

Jayne C. Henderson  
Green River ADD Office  
3860 US Hwy. 60-W  
Owensboro, KY 42301



Hawesville Historic District  
Hancock County, Kentucky

Photo 8 /Ha-H-3

The Tape Deck - Main Street  
Taken from the West

Jayne C. Henderson  
Green River ADD Office  
3860 US Hwy. 60-W  
Owensboro, KY 42301





TAPE  
DECK  
RECORDS  
C  
TAPE  
RECORDS  
1-800-333-3333

Hawesville Historic District  
Hancock County, Kentucky

Photo 9 /Ha-H-4  
East side Main between Main  
Cross and Clay Street

Jayne C. Henderson  
Green River ADD Office  
3860 US Hwy. 60-W  
Owensboro, KY 42301



Hawesville Historic District  
Hancock County, Kentucky

Photo 10 /Ha-H-4

Taken from the Southwest

Jayne C. Henderson  
Green River ADD Office  
3860 US Hwy. 60-W  
Owensboro, KY 42301



ct      Hawesville Historic District  
         Hancock County, Kentucky

Photo 11 /Ha-H-5  
The Rosenblatt Building -  
    Main facade  
Taken from the Southwest

Jayne C. Henderson  
Green River ADD Office  
3860 US Hwy. 60-W  
Owensboro, KY 42301



FOR SALE

MUSEUM

Hawesville Historic District  
Hancock County, Kentucky

Photo 12 /Ha-H-5  
Rosenblatt Building - Store  
front entrance  
Taken from the West

Jayne C. Henderson  
Green River ADD Office  
3860 US Hwy. 60-W  
Owensboro, KY 42301





Hawesville Historic District  
Hancock County, Kentucky

Photo 13

Rosenblatt Building - cast iron  
detail - Main store front

Taken from the West

Jayne C. Henderson  
Green River ADD Office  
3860 US Hwy. 60-W  
Owensboro, KY 42301

SNEAD & BIBB  
14<sup>TH</sup> ST.  
LOUISVILLE, KY

Hawesville Historic District  
Hancock County, Kentucky

Photo 14

Rosenblatt Building - cast iron  
detail - Main store front  
Taken from the West

Jayne C. Henderson  
Green River ADD Office  
3860 US Hwy. 60-W  
Owensboro, KY 42301



Hawesville Historic District  
Hancock County, Kentucky

Photo 15

Rosenblatt Building - cast iron  
detail - Main store front  
Taken from the West

Jayne C. Henderson  
Green River ADD Office  
3860 US Hwy. 60-W  
Owensboro, KY 42301



PAPPY'S  
PAWN

ONE WAY

Hawesville Historic District  
Hancock County, Kentucky

Photo 16

Rosenblatt Building - North  
elevation

Taken from the Northwest

Jayne C. Henderson  
Green River ADD Office  
3860 US Hwy. 60-W  
Owensboro, KY 42301



PAPPY'S  
BUY. SELL. TRADE  
PAWN

BUY  
SELL  
TRADE

WE BUY  
AND  
SELL  
PAWNS  
AND  
JEWELRY

Hawesville Historic District  
Hancock County, Kentucky

Photo 17

Rosenblatt Building - Main Cross  
Street store front

Taken from the Northwest

Jayne C. Henderson  
Green River ADD Office  
3860 US Hwy. 60-W  
Owensboro, KY 42301



Hawesville Historic District  
Hancock County, Kentucky

Photo 18

Rosenblatt Building - Main Cross  
Street - store front detail  
Taken from the North

Jayne C. Henderson  
Green River ADD Office  
3860 US Hwy. 60-W  
Owensboro, KY 42301



Hawesville Historic District  
Hancock County, Kentucky

Photo 19

Rosenblatt Building - Main Cross  
Street - store front detail.

Jayne C. Henderson  
Green River ADD Office  
3860 US Hwy. 60-W  
Owensboro, KY 42301



Hawesville Historic District  
Hancock County, Kentucky

Photo 20

Looking east on Main Cross St.  
from Main St.

Taken from the West

Jayne C. Henderson  
Green River ADD Office  
3860 US Hwy. 60-W  
Owensboro, KY 42301





PAPPY'S  
PAWN

Cotton  
& Fib

25

CHEVROLET

Hawesville Historic District  
Hancock County, Kentucky

Photo 21  
South side Main Cross Street  
Taken from the Northwest

Jayne C. Henderson  
Green River ADD Office  
3860 US Hwy. 60-W  
Owensboro, KY 42301



Calico  
Girl

B  
SE  
TRA

Hawesville Historic District  
Hancock County, Kentucky

Photo 22 /Ha-H-8  
Calico Girl Dress Shop  
Taken from the Northwest

Jayne C. Henderson  
Green River ADD Office  
3860 US Hwy. 60-W  
Owensboro, KY 42301



LOBBY'S  
OFFICE & SUPPLY

SPEED  
LIMIT  
25

Hawesville Historic District  
Hancock County, Kentucky

Photo 23 /Ha-H-9

Larry's Service and Supply -  
West elevation

Taken from the Northwest

Jayne C. Henderson  
Green River ADD Office  
3860 US Hwy. 60-W  
Owensboro, KY 42301



WILLIAMSON

HEATING • COOLING •

LARRY'S  
SERVICE & SUPPLY

ONE WAY

LARRY'S  
SERVICE & SUPPLY

Hawesville Historic District  
Hancock County, Kentucky

Photo 24 /Ha-H-9

Larry's Service and Supply -  
Main facade

Taken from the Northwest

Jayne C. Henderson  
Green River ADD Office  
3860 US Hwy. 60-W  
Owensboro KY 42301





Hawesville Historic District  
Hancock County, Kentucky

Photo 25 /Ha-H-10  
Williams Building - three-  
quarter facade  
Taken from the West

Jayne C. Henderson  
Green River ADD Office  
3860 US Hwy. 60-W  
Owensboro, KY 42301



Hawesville Historic District  
Hancock County, Kentucky

Photo 26 /Ha-H-10

Williams Building - Main facade  
Taken from the Northwest

Jayne C. Henderson  
Green River ADD Office  
3860 US Hwy. 60-W  
Owensboro, KY 42301



DO NOT  
ENTER

Hawesville Historic District  
Hancock County, Kentucky

Photo 27

Main Cross Street from Water  
Street

Taken from the East

Jayne C. Henderson  
Green River ADD Office  
3860 US Hwy. 60-W  
Owensboro, KY 42301



Hawesville Historic District  
Hancock County, Kentucky

Photo 28

North side of Main Cross  
between Main and Water  
Taken from the Southeast

Jayne C. Henderson  
Green River ADD Office  
3860 US Hwy. 60-W  
Owensboro, KY 42301





KENTUCKIANA  
CABLEVISION  
800-444-4444

COEN  
BARRY

United Parcel Service

Hawesville Historic District  
Hancock County, Kentucky

Photo 29 /Ha-H-11  
s Hancock Billiards  
Taken from the Southeast

Jayne C. Henderson  
Green River ADD Office  
3860 US Hwy. 60-W  
Owensboro, KY 42301



Hawesville Historic District  
Hancock County, Kentucky

Photo 30 /Ha-H-11

s Hancock Billiards - Main facade  
Taken from the Southeast

Jayne C. Henderson  
Green River ADD Office  
3860 US Hwy. 60-W  
Owensboro, KY 42301



Hawesville Historic District  
Hancock County, Kentucky

Photo 31 /Ha-H-11  
Hancock Billiards - cornice  
detail  
Taken from the Southwest

Jayne C. Henderson  
Green River ADD Office  
3860 US Hwy. 60-W  
Owensboro, KY 42301



H&R BLOCK

INCOME TAX

ONE WAY

H&R

Hawesville Historic District  
Hancock County, Kentucky

Photo 32 /Ha-H-12  
Century 21 Office  
Taken from the Southeast

Jayne C. Henderson  
Green River ADD Office  
3860 US Hwy. 60-W  
Owensboro, KY 42301



**H&R BLOCK**  
**INCOME TAX**

H&R BLOCK

H&R BLOCK

H  
F

Hawesville Historic District  
Hancock County, Kentucky

Photo 33 /Ha-H-13

H and R Block

Taken from the Southeast

Jayne C. Henderson  
Green River ADD Office  
3860 US Hwy. 60-W  
Owensboro, KY 42301



Hawesville Historic District  
Hancock County, Kentucky

Photo 34 /Ha-H-14  
A&B Florist and Gift Shop -  
east elevation  
Taken from the East

Jayne C. Henderson  
Green River ADD Office  
3860 US Hwy. 60-W  
Owensboro, KY 42301



At Home  
Life Shop

Open

Hawesville Historic District  
Hancock County, Kentucky

Photo 35 /Hä-H-15  
A&B Florist - Store front  
Taken from the South

Jayne C. Henderson  
Green River ADD Office  
3860 US Hwy. 60-W  
Owensboro, KY 42301



Hawesville Historic District  
Hancock County, Kentucky

Photo 36 /Ha-H-14  
A&B Florist - cornice detail  
Taken from the South

Jayne C. Henderson  
Green River ADD Office  
3860 US Hwy. 60-W  
Owensboro, KY 42301





Hawesville Historic District  
Hancock County, Kentucky

Photo 37 /Ha-H-15

Main facade

Taken from the South

Jayne C. Henderson  
Green River ADD Office  
3860 US Hwy. 60-W  
Owensboro, KY 42301



Hawesville Historic District  
Hancock County, Kentucky

Photo 38 /Ha-H-15  
Store front detail  
Taken from the South

Jayne C. Henderson  
Green River ADD Office  
3860 US Hwy. 60-W  
Owensboro, KY 42301



Hawesville Historic District  
Hancock County, Kentucky

Photo 39 /Ha-H-16  
L and N Railroad Depot  
Taken from the Northeast

Jayne C. Henderson  
Green River ADD Office  
3860 US Hwy. 60-W  
Owensboro, KY 42301



Hawesville Historic District  
Hancock County, Kentucky

Photo 40 /Ha-H-16  
L and N Depot - North elevation  
Taken from the Northwest

Jayne C. Henderson  
Green River ADD Office  
3860 US Hwy. 60-W  
Owensboro, KY 42301





CHEVROLET

MA 894

Hawesville Historic District  
Hancock County, Kentucky

Photo 41

West side Water Street between  
Main Cross and Clay  
Taken from the Northeast

Jayne C. Henderson  
Green River ADD Office  
3860 US Hwy. 60-W  
Owensboro, KY 42301



Hawesville Historic District  
Hancock County, Kentucky

Photo 42 /Ha-H-17

Main facade

Taken from the East

Jayne C. Henderson  
Green River ADD Office  
3860 US Hwy. 60-W  
Owensboro, KY 42301



BAPTIST ASSOCIATION

Hawesville Historic District  
Hancock County, Kentucky

Photo 43 /Ha-H-18  
Blackford Baptist Association  
Main facade  
Taken from the Northwest

Jayne C. Henderson  
Green River ADD Office  
3860 US Hwy. 60-W  
Owensboro, KY 42301



SPEED  
LIMIT  
25

Hawesville Historic District  
Hancock County, Kentucky

Photo 44 /Ha-H-19

Hawesville Presbyterian Church  
- three-quarter main facade  
Taken from the Northeast

Jayne C. Henderson  
Green River ADD Office  
3860 US Hwy. 60-W  
Owensboro, KY 42301





Hawesville Historic District  
Hancock County, Kentucky

Photo 45  
West side Main Street between  
Jefferson and Main Cross

Jayne C. Henderson  
Green River ADD Office  
3860 US Hwy. 60-W  
Owensboro, KY 42301



Hawesville Historic District  
Hancock County, Kentucky

Photo 46 /Ha-H-21  
Hawesville M.E. Church South  
Taken from the Southwest

Jayne C. Henderson  
Green River ADD Office  
3860 US Hwy. 60-W  
Owensboro, KY 42301