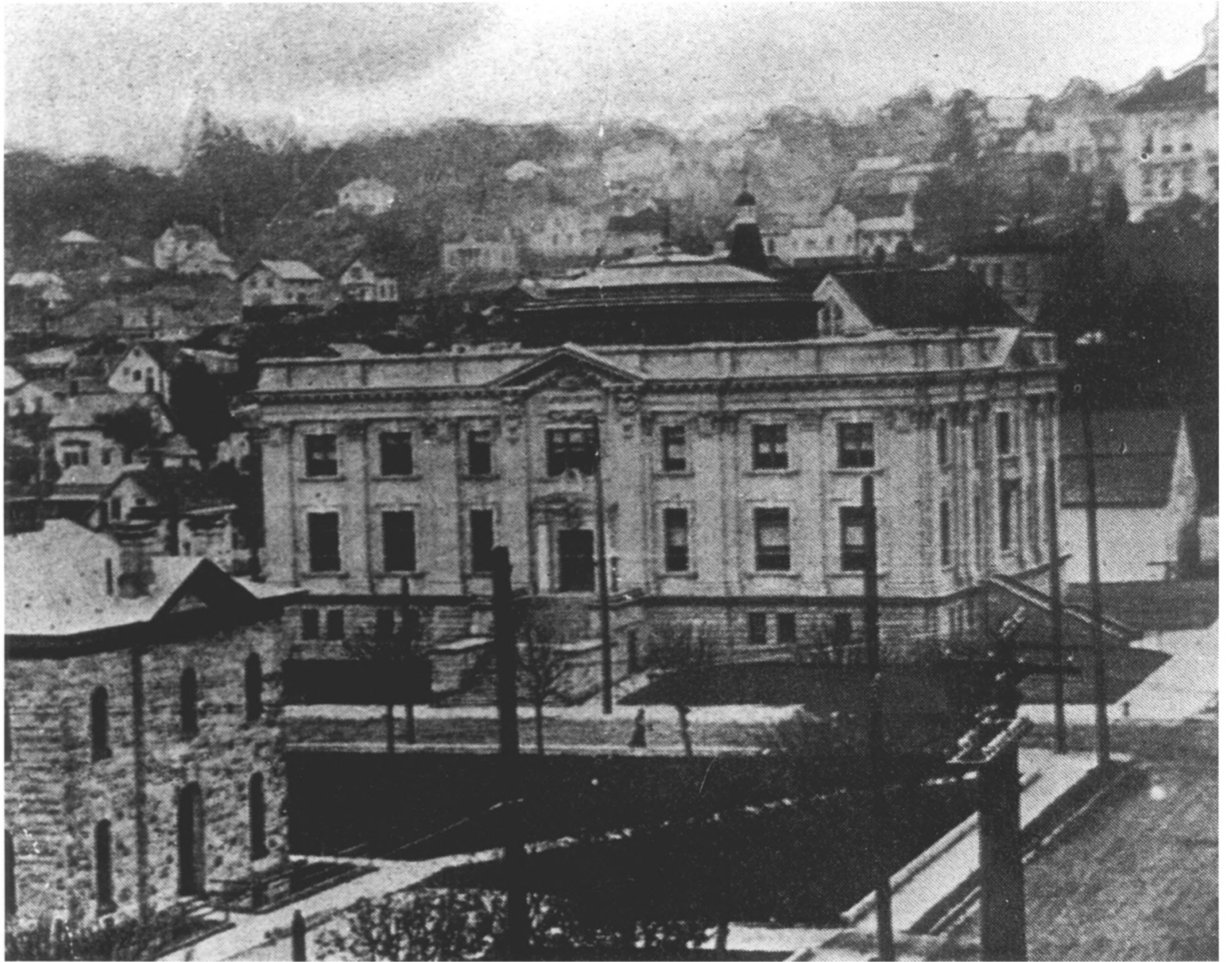




1. Clatsop County Courthouse
2. Astoria, Oregon
3. Photographer unknown
4. 1920 (approximately)
5. Negative at Clatsop County Historical Soc.
6. Looking northeast, Clatsop County Courthouse is left foreground, old Clatsop county jail is on corner beside it. In the right foreground is the Flavel House. The intersection shown is 7th street and Duane street.
7. Photograph No. 1 OF 6



1. Clatsop County Courthouse
2. Astoria, Oregon
3. Photographer unknown
4. 1912 (Approximately)
5. Negative is at the Clatsop County Historical Society.
6. Looking southeast. Stone building in the foreground is the old Customs House. The Clatsop County Courthouse is in the center of the photograph facing Commercial street. The dome removed in 1951 is visible.
7. Photograph No. 2 of 6



1. Clatsop County Courthouse
2. Astoria, Oregon
3. Roger T. Tetlow - Photographer
4. May 19, 1983
5. Negative at the Clatsop County Historical Society.
6. Looking north across Duane street. The Old County Jail is at the far left.  
This is the rear view of the courthouse showing the parking lot on the south.
7. Photograph No. 4 OF 4



1. Clatsop County Courthouse
2. Astoria, Oregon
3. Roger T. Tetlow - Photographer
4. May 19, 1983
5. Negative at the Clatsop County Historical Society.
6. Looking southwest on Commercial street.

The ornamental cannon can be seen at extreme left. The door cut through the foundation in 1929. In the background at the far left can be seen the Flavel House.

7. Photograph No. 3 of 4





1. Clatsop County Courthouse
2. Astoria, Oregon
3. Roger T. Tetlow - Photographer
4. May 19, 1983
5. Negative at the Clatsop County Historical Society.
6. Looking east from 7th street. At the left is the historical log display put there in 1931. Shown is the 7th street parking area and the steel outside staircase built in 1977.
7. Photograph No. 5 OF 6



1. Clatsop County Courthouse
2. Astoria, Oregon
3. Roger T. Tetlow - Photographer
4. May 19, 1983
5. Negative is at the Clatsop County Historical Society
6. Looking west from 8th street. The new post office at far right replace the old stone customs house shown in photograph No. 2.
7. Photograph No. 6 OF 4