

NATIONAL REGISTER OF HISTORIC PLACES
PROPERTY PHOTOGRAPH FORM

(Type all entries - attach to or enclose with photograph)

1. NAME

COMMON	AND/OR HISTORIC	NUMERIC CODE (Assigned by NPS)
Staff Row and Old Post Area	Original Fort McPherson	NOV 5 1974

2. LOCATION

STATE	COUNTY	TOWN
Georgia	Fulton	Fort McPherson

STREET AND NUMBER
Northeast corner of Post

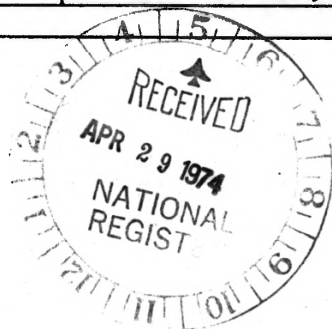
3. PHOTO REFERENCE

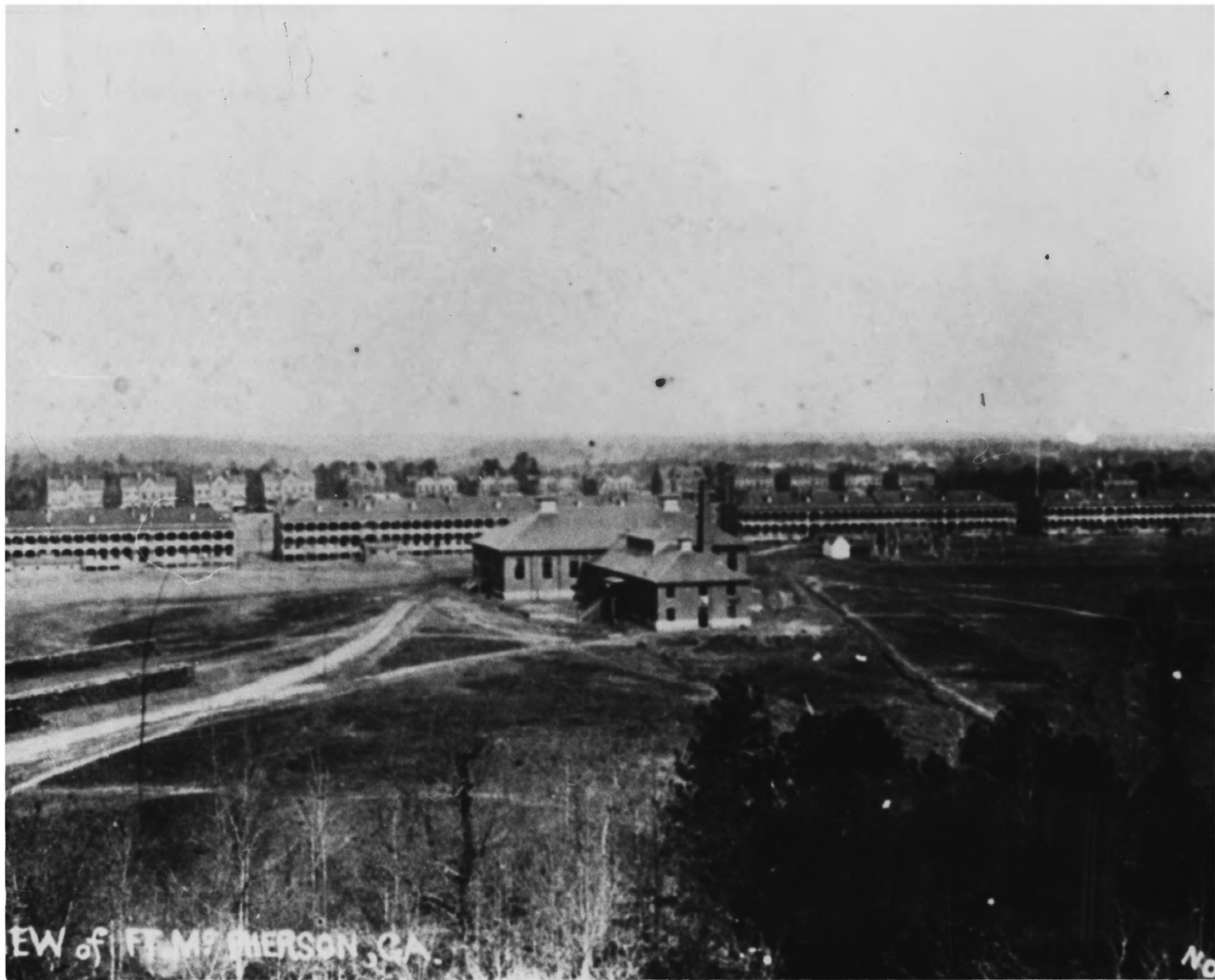
PHOTO CREDIT	DATE	NEGATIVE FILED AT
Facilities Engineers	1920's	Facilities Engineers Bldg 358 Fort McPherson, GA

4. IDENTIFICATION

DESCRIBE VIEW, DIRECTION, ETC.

Aerial view of Old Post Area.





EW of FT. M. P. SHERMAN, CA.

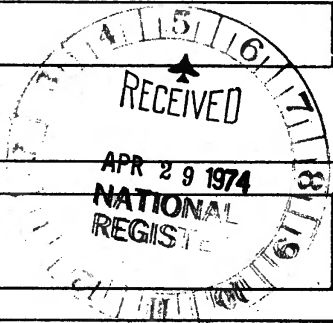
No

UNITED STATES DEPARTMENT OF THE INTERIOR
NATIONAL PARK SERVICE

**NATIONAL REGISTER OF HISTORIC PLACES
PROPERTY PHOTOGRAPH FORM**

(Type all entries - attach to or enclose with photograph)

1. NAME		
COMMON	AND/OR HISTORIC	NUMERIC CODE <i>(Assigned by NPS)</i>
Staff Row and Old Post Area	Original Fort McPherson	NOV 5 1974
2. LOCATION		
STATE	COUNTY	TOWN
Georgia	Fulton	Fort McPherson
STREET AND NUMBER		
Northeast corner of Post		
3. PHOTO REFERENCE		
PHOTO CREDIT	DATE	NEGATIVE FILED AT
Facilities Engineer	1900	Facilities Engineer Bldg 358 Fort McPherson, GA
4. IDENTIFICATION		
DESCRIBE VIEW, DIRECTION, ETC.		



Birdseye view of Fort McPherson in 1900 showing original Post area.



NATIONAL REGISTER OF HISTORIC PLACES
PROPERTY PHOTOGRAPH FORM

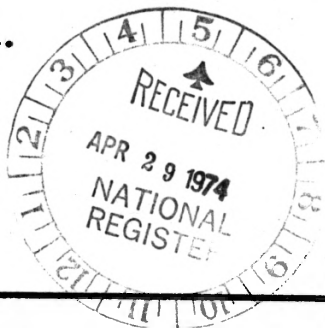
(Type all entries - attach to or enclose with photograph)

1. NAME		
COMMON	AND/OR HISTORIC	NUMERIC CODE (Assigned by NPS)
Staff Row and Old Post Area	Original Fort McPherson	NOV 5 1974
2. LOCATION		
STATE	COUNTY	TOWN
Georgia	Fulton	Fort McPherson
STREET AND NUMBER		
Northeast corner of post		
3. PHOTO REFERENCE		
PHOTO CREDIT	DATE	NEGATIVE FILED AT
Facilities Engineers	1965	Facilities Engineers Bldg 358 Fort McPherson, GA

4. IDENTIFICATION

DESCRIBE VIEW, DIRECTION, ETC.

Aerial view of Fort McPherson showing the Old Post Area.





UNITED STATES DEPARTMENT OF THE INTERIOR
NATIONAL PARK SERVICE

**NATIONAL REGISTER OF HISTORIC PLACES
PROPERTY PHOTOGRAPH FORM**

(Type all entries - attach to or enclose with photograph)

1. NAME

COMMON	AND/OR HISTORIC	NUMERIC CODE/ (Assigned by NPS)
Staff Row and Old Post Area	Original Fort McPherson	NOV 5 1974

2. LOCATION

STATE	COUNTY	TOWN
Georgia	Fulton	Fort McPherson

STREET AND NUMBER

Bldg 358

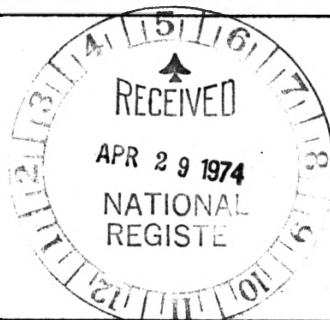
3. PHOTO REFERENCE

PHOTO CREDIT	DATE	NEGATIVE FILED AT
Facilities Engineers	1930's	Facilities Engineers Bldg 358 Fort McPherson, GA

4. IDENTIFICATION

DESCRIBE VIEW, DIRECTION, ETC.

Post Commander's Quarters
Bldg #18 (old photo)





UNITED STATES DEPARTMENT OF THE INTERIOR
NATIONAL PARK SERVICE

**NATIONAL REGISTER OF HISTORIC PLACES
PROPERTY PHOTOGRAPH FORM**

(Type all entries - attach to or enclose with photograph)

1. NAME

COMMON	AND/OR HISTORIC	NUMERIC CODE <i>(Assigned by NPS)</i>
Staff Row and Old Post Area	Original Fort McPherson	NOV 5 1974

2. LOCATION

STATE	COUNTY	TOWN
Georgia	Fulton	Fort McPherson

STREET AND NUMBER

Northeast Corner of Post

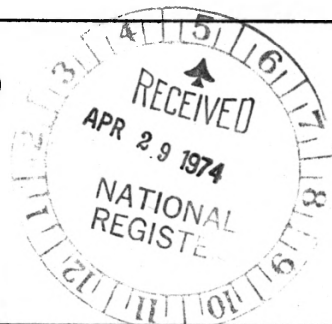
3. PHOTO REFERENCE

PHOTO CREDIT	DATE	NEGATIVE FILED AT
Facilities Engineers	early 1900's	Facilities Engineers Bldg 358 Fort McPherson, GA

4. IDENTIFICATION

DESCRIBE VIEW, DIRECTION, ETC.

Old photo of Third Army Commanding General's Quarters Bldg #10





AID OFFICE

RECEPTION CENTER

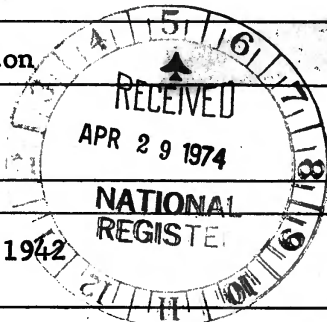


UNITED STATES DEPARTMENT OF THE INTERIOR
NATIONAL PARK SERVICE

**NATIONAL REGISTER OF HISTORIC PLACES
PROPERTY PHOTOGRAPH FORM**

(Type all entries - attach to or enclose with photograph)

1. NAME		
COMMON Staff Row and Old Post Area	AND/OR HISTORIC Original Fort McPherson	NUMERIC CODE (Assigned by NPS) NOV 5 1974
2. LOCATION		
STATE Georgia	COUNTY Fulton	TOWN Fort McPherson
STREET AND NUMBER Northeast Corner of Post		
3. PHOTO REFERENCE		
PHOTO CREDIT Facilities Engineers	DATE 1942	NEGATIVE FILED AT Facilities Engineers Bldg 358 Fort McPherson, GA



4. IDENTIFICATION
DESCRIBE VIEW, DIRECTION, ETC. Oblique view of front of Fort McPherson Hospital during World War II.



UNITED STATES DEPARTMENT OF THE INTERIOR
NATIONAL PARK SERVICE

NATIONAL REGISTER OF HISTORIC PLACES
PROPERTY PHOTOGRAPH FORM

(Type all entries - attach to or enclose with photograph)

1. NAME

COMMON Staff Row and Old Post Area	AND/OR HISTORIC Original Fort McPherson	NUMERIC CODE (Assigned by NPS) NOV 5 1974
---------------------------------------	--	--

2. LOCATION

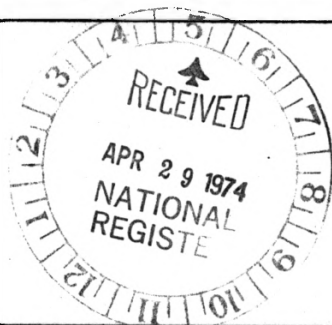
STATE Georgia	COUNTY Fulton	TOWN Fort McPherson
STREET AND NUMBER Northeast Corner of Post		

3. PHOTO REFERENCE

PHOTO CREDIT Facilities Engineers	DATE 1965	NEGATIVE FILED AT Facilities Engineers Bldg 358 Fort McPherson, GA
--------------------------------------	--------------	--

4. IDENTIFICATION

DESCRIBE VIEW, DIRECTION, ETC. Modern photo of Old Post Entrance Street
--





UNITED STATES DEPARTMENT OF THE INTERIOR
NATIONAL PARK SERVICE

NATIONAL REGISTER OF HISTORIC PLACES
PROPERTY PHOTOGRAPH FORM

(Type all entries - attach to or enclose with photograph)

1. NAME		
COMMON	AND/OR HISTORIC	NUMERIC CODE (Assigned by NPS)
Staff Row and Old Post Area	Original Fort McPherson	NOV 5 1974
2. LOCATION		
STATE	COUNTY	TOWN
Georgia	Fulton	Fort McPherson
STREET AND NUMBER		
Northeast corner of Post		
3. PHOTO REFERENCE		
PHOTO CREDIT	DATE	NEGATIVE FILED AT
Facilities Engineer	1965	Facilities Engineers Bldg 358 Fort McPherson, GA

4. IDENTIFICATION
DESCRIBE VIEW, DIRECTION, ETC.
Rear view of Old Post Headquarters Bldg 41





UNITED STATES DEPARTMENT OF THE INTERIOR
NATIONAL PARK SERVICE

NATIONAL REGISTER OF HISTORIC PLACES
PROPERTY PHOTOGRAPH FORM

(Type all entries - attach to or enclose with photograph)

1. NAME		
COMMON	AND/OR HISTORIC	NUMERIC CODE (Assigned by NPS)
Staff Row and Old Post Area	Original Fort McPherson	NOV 8 1974

2. LOCATION		
STATE	COUNTY	TOWN
Georgia	Fulton	Fort McPherson
STREET AND NUMBER		
Northeast Corner of Post		

3. PHOTO REFERENCE		
PHOTO CREDIT	DATE	NEGATIVE FILED AT
Facilities Engineer	1965	Facilities Engineers Bldg 358 Fort McPherson, GA

4. IDENTIFICATION
DESCRIBE VIEW, DIRECTION, ETC.

Recent photo of Post Commander's Quarters Bldg #18





UNITED STATES DEPARTMENT OF THE INTERIOR
NATIONAL PARK SERVICE

**NATIONAL REGISTER OF HISTORIC PLACES
PROPERTY PHOTOGRAPH FORM**

(Type all entries - attach to or enclose with photograph)

1. NAME

COMMON	AND/OR HISTORIC	NUMERIC CODE <i>(Assigned by NPS)</i>
Staff Row and Old Post Area	Original Fort McPherson	NOV 5 1974

2. LOCATION

STATE	COUNTY	TOWN
Georgia	Fulton	Fort McPherson

STREET AND NUMBER

Northeast corner of Post

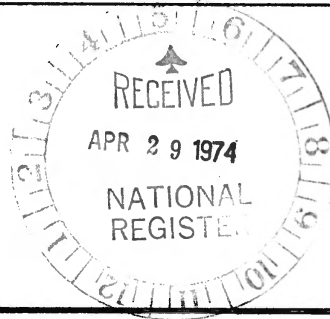
3. PHOTO REFERENCE

PHOTO CREDIT	DATE	NEGATIVE FILED AT
Facilities Engineers	1969	Facilities Engineer Bldg 358 Fort McPherson, GA

4. IDENTIFICATION

DESCRIBE VIEW, DIRECTION, ETC.

Frontal view of New Post Headquarters Bldg 65





UNITED STATES DEPARTMENT OF THE INTERIOR
NATIONAL PARK SERVICE

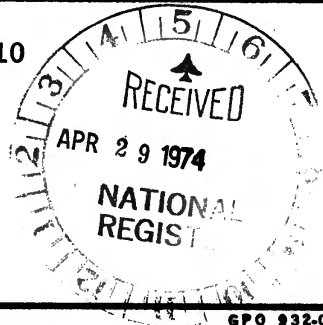
NATIONAL REGISTER OF HISTORIC PLACES
PROPERTY PHOTOGRAPH FORM

(Type all entries - attach to or enclose with photograph)

1. NAME		
COMMON	AND/OR HISTORIC	NUMERIC CODE (Assigned by NPS)
Staff Row and Old Post Area	Original Fort McPherson	NOV 5 1974
2. LOCATION		
STATE	COUNTY	TOWN
Georgia	Fulton	Fort McPherson
STREET AND NUMBER		
Northeast Corner of Post		
3. PHOTO REFERENCE		
PHOTO CREDIT	DATE	NEGATIVE FILED AT
Facilities Engineers	1965	Facilities Engineers Bldg 358 Fort McPherson, GA
4. IDENTIFICATION		

DESCRIBE VIEW, DIRECTION, ETC.

Recent photo of Third Army Commanding General's Quarters Bldg #10





UNITED STATES DEPARTMENT OF THE INTERIOR
NATIONAL PARK SERVICE

**NATIONAL REGISTER OF HISTORIC PLACES
PROPERTY PHOTOGRAPH FORM**

(Type all entries - attach to or enclose with photograph)

1. NAME

COMMON	AND/OR HISTORIC	NUMERIC CODE <i>(Assigned by NPS)</i>
Staff Row and Old Post Area	Original Fort McPherson	NOV 5 1974

2. LOCATION

STATE	COUNTY	TOWN
Georgia	Fulton	Fort McPherson

STREET AND NUMBER

Northeastern corner of Post

3. PHOTO REFERENCE

PHOTO CREDIT	DATE	NEGATIVE FILED AT
Facilities Engineers	1965	Facilities Engineers Bldg 358 Fort McPherson, GA

4. IDENTIFICATION

DESCRIBE VIEW, DIRECTION, ETC.

Recent photo of Old post Headquarters Bldg 41 (front view)

