



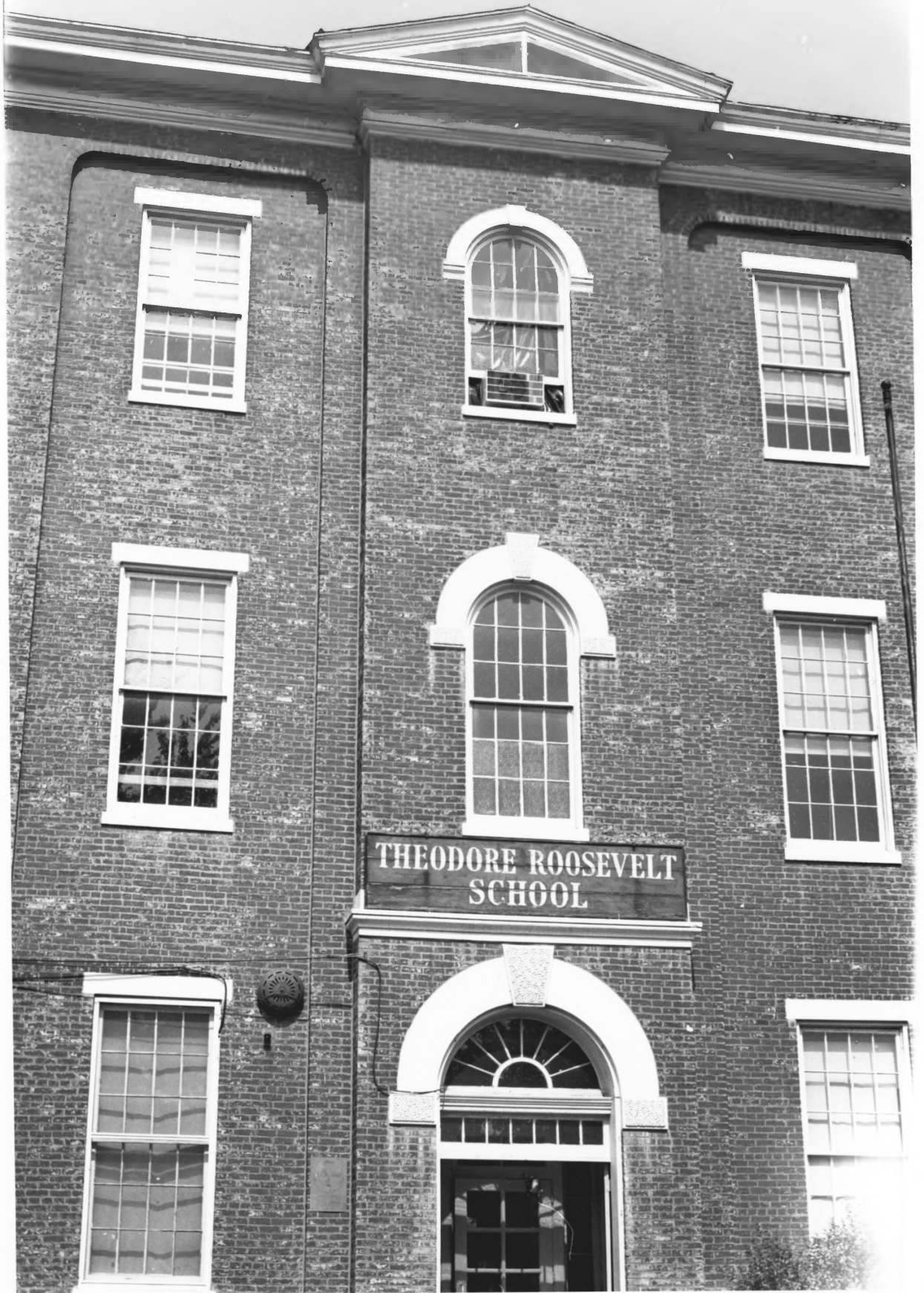
Theodore Roosevelt School  
222 North 17th Street  
Louisville, Jefferson, ~~Kent~~  
Kentucky

Hugh Foshee

NOV 3 1980

Louisville Landmarks Commission  
727 W. Main St., Louisville  
May 1980

Photo 1. Main facade, looking  
northwest.



THEODORE ROOSEVELT  
SCHOOL

Theodore Roosevelt School  
222 North 17th Street  
Louisville, Jefferson, K.  
Kentucky

Hugh Foshee

NOV 3 1980

Louisville Landmarks Comm.  
727 W. Main St., Louisville  
July 1980

Photo 2. Main facade- detail,  
looking west.



PORTMAN  
MUSEUM

Theodore Roosevelt School  
222 North 17th Street  
Louisville, Jefferson,  
Kentucky

Hugh Foshee

NOV 3 1980

Louisville Landmarks Comm.  
727 W. Main Street, Louisville  
July 1980

Photo 3. 1915 Addition, from  
rear looking east.



BILLS  
BUSHING  
LOVE  
CLUB

ELW 058

Theodore Roosevelt School  
222 North 17th Street  
Louisville, Jefferson  
Kentucky

Hugh Foshee

NOV 3 1980

Louisville Landmarks Comm.  
727 W. Main St., Louisville  
July 1980

Photo 4. 1954 addition, looking  
looking northwest.





Theodore Roosevelt School  
222 N. 17th Street  
Louisville, Jefferson,  
Kentucky

111-  
18a

Hugh Foshee

Louisville Landmarks Commission  
727 W. Main St., Louisville  
40202

July 1981

Photo 6. Boiler house, looking  
northeast.