



John McCauley House
319 Lexington Avenue
Lexington
Fayette County
Kentucky

DEC 4 1980

Richard S. DeCamp
253 Market Street, Lexington, KY.
August, 1980

PHOTO 1 - view of front (north)
facade.

NOV 3
1980



John McCauley House
319 Lexington Avenue
Lexington
Fayette County K
Kentucky

DEC 4 1980

Richard S. DeCamp
253 Market Street, Lexington, Ky.
August, 1980

NOV 3 1980

Photo 1a- Looking west at the east side of McCauley
House.



John McCauley House
Lexington
Fayette *County*
Kentucky

DEC 4 1980

Richard S. DeCamp
253 Market Street, Lexington, Ky.
August, 1980

NOV 3 1980

Photo 2 - East side of rear wing looking west.



John McCauley House
Lexington
Fayette *County*
Kentucky

DEC 4 1980

Richard S. DeCamp
253 Market Street
August, 1980

NOV 3 1980

Photo 3 - View looking northwest of roof line showing
cupola and parapet



John McCauley House
Lexington
Fayette *County*
Kentucky

DEC 4 1980

Richard S. DeCamp
253 Market Street, Lexington, Ky.
August, 1980

NOV 3 1980

Photo 4 - Front hall staircase.



John McCauley House
Lexington
Fayette *County*
Kentucky

DEC 4 1980

Richard S. DeCamp
253 Market Street, Lexington, Ky.
August, 1980

NOV 3 1980

Photo 5 - Stairwell showing skylight.



John McCauley House
Lexington
Fayette *County*
Kentucky

DEC 4 1980

Richard S. DeCamp
253 Market Street, Lexington, Ky.
August, 1980

NOV 3 1980

Photo 6 - Rectangular ceiling molding in front hall.



John McCauley House
Lexington
Fayette *County*
Kentucky

DEC 4 1980

Richard S. DeCamp
253 Market Street, Lexington, Ky.
August, 1980

NOV 3 1980

Photo 7 - Double doors between parlors.



John McCauley House
Lexington
Fayette *County*
Kentucky

DEC 4 1980

Richard S. DeCamp
253 Market Street, Lexington, Ky.
August, 1980

NOV 3 1980

Photo 8 - Entablature as seen in front parlor.



DEC 4 1980

John McCauley House
Lexington
Fayette *County*
Kentucky

Richard S. DeCamp
253 Market Street, Lexington, Ky.
August, 1980

NOV 3 1980

Photo 9 - Ceiling medallion in parlor.



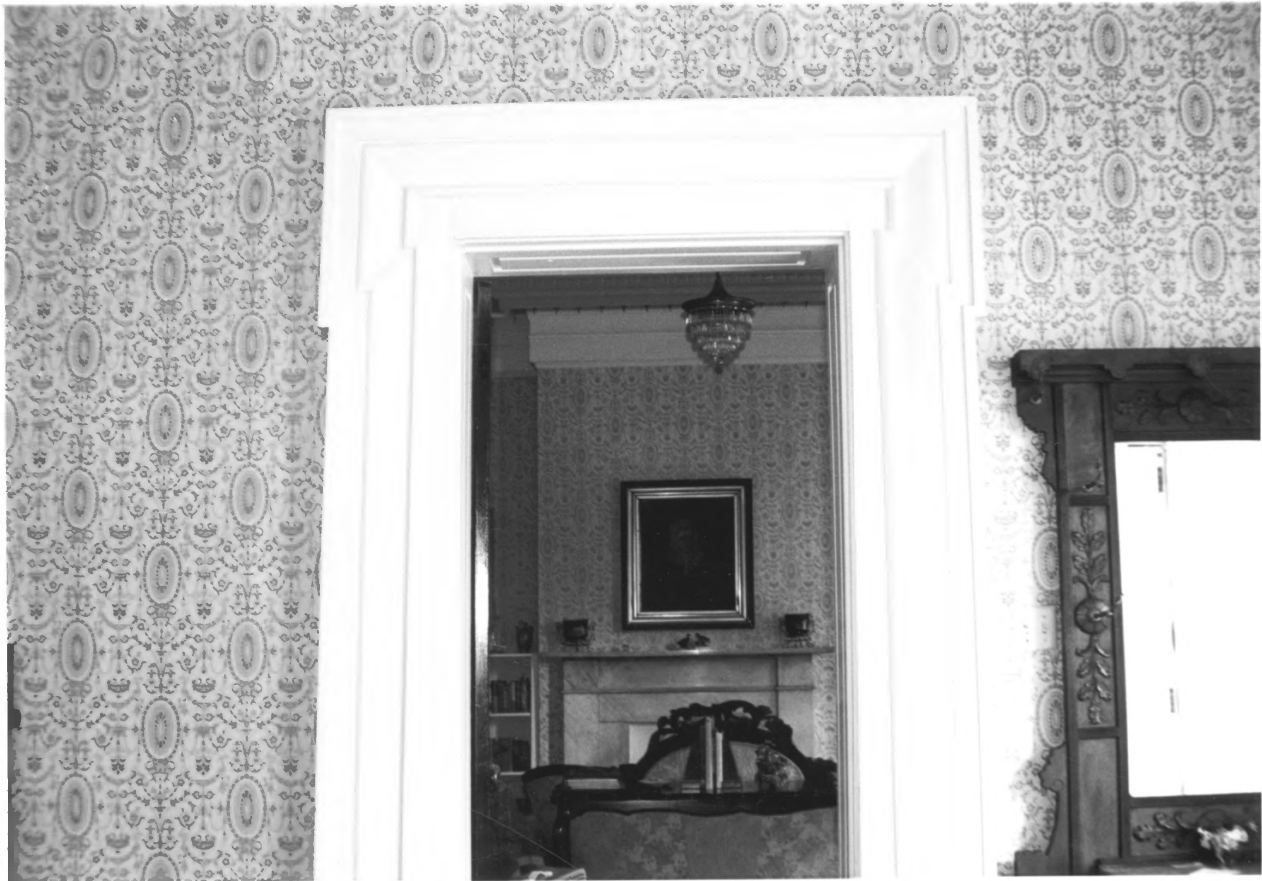
John McCauley House
Lexington
Fayette *County*
Kentucky

DEC 4 1980

Richard S. DeCamp
253 Market Street, Lexington, Ky.
August, 1980

Photo 10 - Mantel in parlor.

NOV 3 1980



John McCauley House
Lexington
Fayette *County*
Kentucky

DEC 4 1980

Richard S. DeCamp
253 Market Street, Lexington, Ky.
August, 1980

NOV 3 1980

Photo 11 - Door frame around door leading to parlor.



John McCauley House
Lexington
Fayette *County*
Kentucky

DEC 4 1980

Richard S. DeCamp
253 Market Street, Lexington, Ky.
August, 1980

NOV 3 1980

Photo 12 - Front entrance.



John McCauley House
Lexington
Fayette *County*
Kentucky

DEC 4 1980

Richard S. DeCamp
253 Market Street, Lexington, Ky. 40508
August, 1980

Photo 13 - Window frame on early two-story wing.

NOV 3 1980