



Gay House

Montgomery, Alabama, Montgomery  
County

**MAR 21 1979**

Ken Register, November, 1978

In possession of photographer.

Gay House, view from northeast.

Photo Number: 1



Gay House  
Montgomery, Alabama, Montgomery  
County

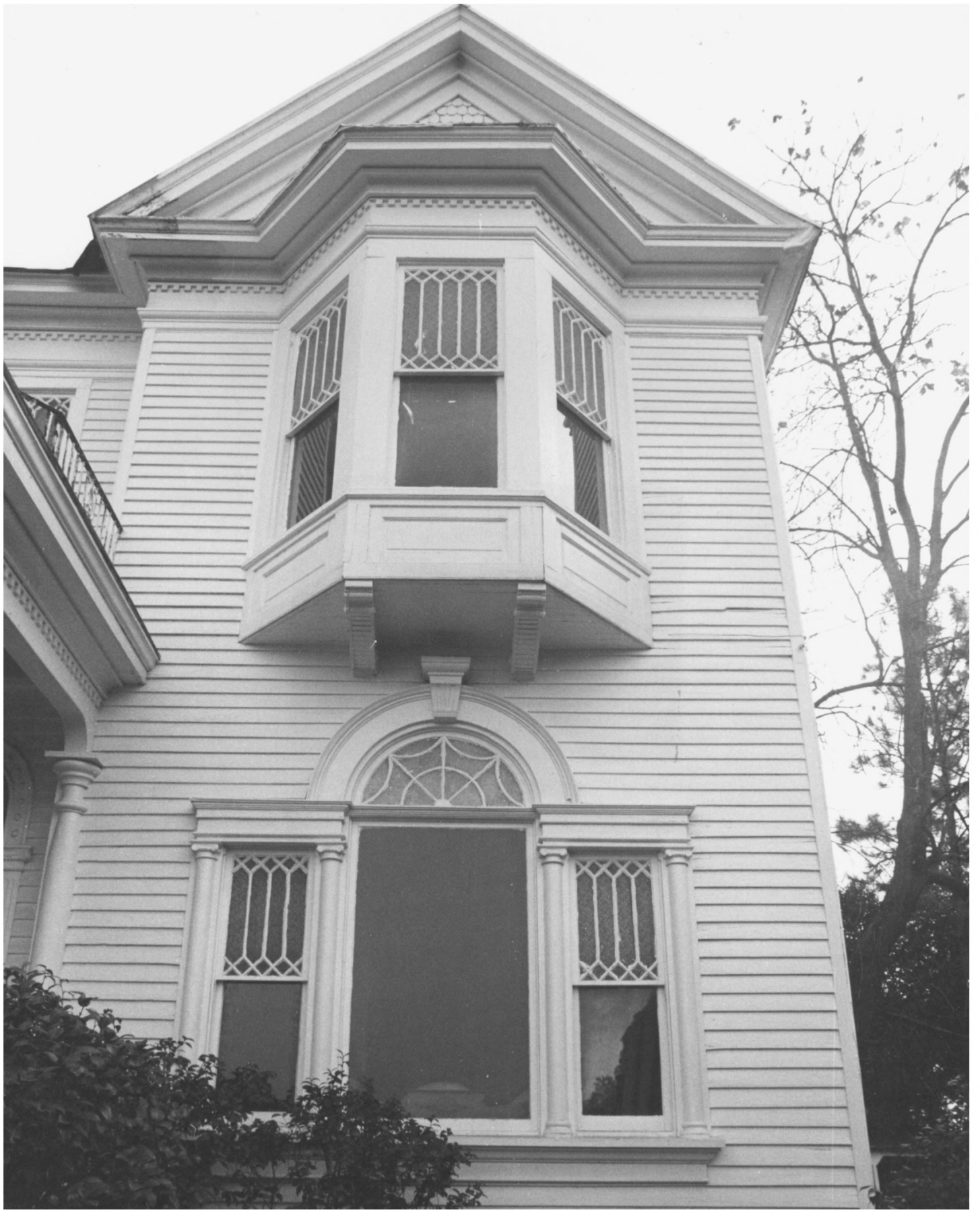
Ken Register, November, 1978  
In possession of photographer.

Gay House, north facade.

Photo Number: 2

FEB 5 1979

MAR 21 1979



Gay House

Montgomery, Alabama, Montgomery  
County

Ken Register, November, 1978

In possession of photographer.

Gay House, detail of facade.

Photo Number: 3

**MAR 21 1979**



Gay House  
Montgomery, Alabama, Montgomery  
County

Ken Register, November, 1978  
In possession of photographer.

Gay House, detail of main  
entrance.

Photo Number: 4 MAR 21 1979





Gay House

Montgomery, Alabama, Montgomery  
County

MAR 21 1979

Ken Register, November, 1978  
In possession of photographer.

Gay House, west elevation.

Photo Number: 5

FEB 5 1979



MAR 21 1979

Gay House  
Montgomery, Alabama, Montgomery  
County

Ken Register, November, 1978  
In possession of photographer.

Gay House, rear elevation.

Photo Number: 6

FEB 5 1979



Gay House  
Montgomery, Alabama, Montgomery  
County

Ken Register, November, 1978  
In possession of photographer.

Gay House, detail of main  
stairway.

Photo Number: 7

**MAR 21 1979**

**FEB 5 1979**



Gay House  
Montgomery, Alabama, Montgomery  
County

Ken Register, November, 1978  
In possession of photographer.

Gay House, detail of mantel.

Photo Number: 8 **MAR 21 1979**

**FEB 5 1979**





Gay House.

Montgomery, Alabama, Montgomery  
County

Ken Register, November, 1978  
In possession of photographer.

Gay House, detail of rear  
stairway.

Photo Number: 9

**MAR 21 1979**

**FEB 5 1979**