

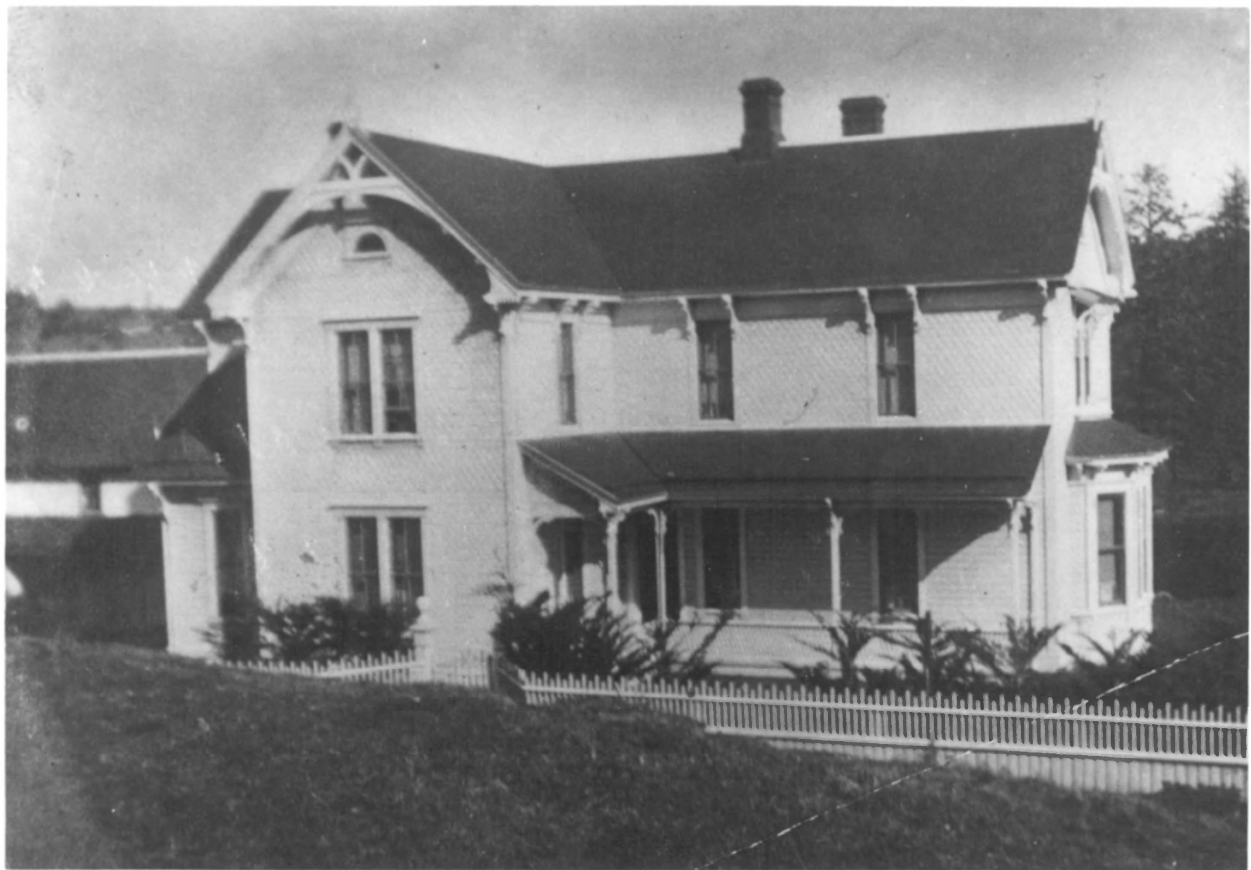


Hughes (Patrick) House
Cape Blanco State Park
Sixes vicinity, Curry Co, Oreg.
1 of 17 - Historic view, 1905.
Looking northeasterly from

lighthouse access road on high
ground southwesterly of house,
showing southwest elevation of
house, dairy barn and creamery
Line of trees marks location
of Sixes River. Outbuildings
no longer extant. Building at
far end of fenced field in
distance is no longer standing
Original photo held by Vernice
(Mrs. John) Masterson

Jackson Street at US 101
Port Orford, OR 97465

NOV 28 1980



Hughes (Patrick) House
Cape Blanco State Park
Sixes vic., Curry Co, Oregon

2 of 17 - Historic view,
undated (c. 1910?)

Southwesterly elevation, showing door yard enclosed by picket fence and cypress hedge. Acroteria at peak of each gable end are no longer in place.

Original photo held by Snyeva
(Mrs. Edward) Lindberg,
P.O. Box 425
Port Orford, OR 97465

OCT 28 1980

NOV 8 7 1980



Hughes (Patrick) House
Cape Blanco State Park
Sixes vic., Curry Co, Oregon

3 of 17 - Southeast and north-
east elevations.

Elisabeth Walton photo, 1971
Oregon State His. Pres. Office
525 Trade St. SE
Salem, OR 97310

OCT 28 1980

NOV 28 1980

Carriage house/garage on right
no longer stands



Hughes (Patrick) House
Cape Blanco State Park
Sixes vic., Curry Co, Oregon
4 of 17 - Northwest and south-
west elevations.

OCT 28 1980

Elisabeth Walton photo, 1971
Oregon State Hist Pres Office
525 Trade St. SE
Salem, OR 97310

NOV 28 1980



Hughes (Patrick) House
Cape Blanco State Park
Sixes vic., Curry Co., Oregon

5 of 17 - Detail of gable-
roofed section, southwest

face, showing variety of
shingle patterns used for
cladding in horizontal bands
and zones.

NOV 28 1980

Elisabeth Walton photo, 1971
Oregon State Hist Pres Office
525 Trade St. SE
Salem, OR 97310

OCT 28 1980



NOV 28 1980

Hughes (Patrick) House
Cape Blanco State Park
Sixes vic., Curry Co, Oregon
6 of 17 - Newel post, railing,
wainscoting in entry stair hall

Elisabeth Walton photo, 1971
Oregon State Historic Pres Off
525 Trade St. SE
Salem, OR 97310 **OCT 28 1980**



NOV 28 1980

Hughes (Patrick) House
Cape Blanco State Park
Sixes vic., Curry Co, Oregon
7 of 17 - Typical five-panel
door with beaded surround with
corner blocks and baseboard.
Original treatment.
Elisabeth Walton photo, 1971
Oregon State Hist. Pres Office
525 Trade St. SE
Salem, OR 97310

OCT 28 1980



Hughes (Patrick) House
Cape Blanco State Park
Sixes vic., Curry Co., Oregon
8 of 17 - Parlor chimneypiece,
west wall.

NOV 28 1980

Elisabeth Walton photo, 1971
Oregon State His Pres Office
525 Trade St. SE
Salem, OR 97310

OCT 28 1980



Hughes (Patrick) House
Cape Blanco State Park
Sixes vic., Curry Co., Oregon

9 of 17 - Smoking room
chimneypiece, south wall

Elisabeth Walton photo, 1971
Oregon State His Pres Office
525 Trade Street SE
Salem, OR 97310

OCT 28 1980



Hughes (Patrick) House
Cape Blanco State Park
Sixes vic., Curry Co., Oregon

10 of 17 - Dining room, west
wall, showing wainscoting,

door to kitchen, pass-through
opening to pantry.

Elisabeth Walton photo, 1971
Oregon State Hist Pres Office

525 Trade St. SE
Salem, OR 97310.

OCT 28 1980

NOV 28 1980



Hughes (Patrick) House
Cape Blanco State Park
Sixes vic., Curry Co., Oregon
11 of 17 - Built-in kitchen
range and chimney, center of
kitchen. Looking southwesterly
Elisabeth Walton photo, 1971
Oregon State Hist Pres Office
525 Trade St. SE
Salem, OR 97310 **OCT 28 1980**



NOV 28 1980

Hughes (Patrick) House
Cape Blanco State Park
Sixes vic., Curry Co., Oregon
12 of 17 - Built-in cabinet,
west wall of kitchen.

Elisabeth Walton photo, 1971
Oregon State His Pres Office
525 Trade St. SE
Salem, OR 97310

OCT 28 1980



Hughes (Patrick) House
Cape Blanco State Park
Sixes vic., Curry Co., Oregon
13 of 17 - Southeast elevation
showing recent foundation work
and restored exterior paint
treatment.

Georgia Fryberger photo, 1980
Cape Blanco State Park
PO Box 299
Sixes, OR 97476

OCT 28 1980

NOV 18 1980



NOV 28 1980

Hughes (Patrick) House
Cape Blanco State Park
Sixes vic., Curry Co., Oregon
14 of 17 - Southwest and south-
east elevations. Showing recent

foundation work and restored
exterior paint treatment.

Georgia Fryberger photo, 1980
Cape Blanco State Park
PO Box 299
Sixes, OR 97476

OCT 28 1980



Hughes (Patrick) House
Cape Blanco State Park
Sixes vic., Curry Co., Oregon

15 of 17 - Northwest and southwest elevations, showing concrete block foundation recently installed.

Georgia Fryberger photo, 1980
Cape Blanco State Park

PO Box 299
Sixes, OR 97476

OCT 28 1980

NOV 28 1980



Hughes (Patrick) House
Cape Blanco State Park
Sixes vic., Curry Co., Oregon
16 of 17 - Northwest elevation
OCT 28 1980

Georgia Fryberger photo, 1980
Cape Blanco State Park
PO Box 299
Sixes, OR 97476

NOV 28 1980



Hughes (Patrick) House
Cape Blanco State Park
Sixes vic., Curry Co., Oregon
17 of 17 - Northeast and north-
west elevations.

Georgia Fryberger photo, 1980
Cape Blanco State Park
PO Box 299
Sixes, OR 97476

OCT 28 1980

NOV 28 1980