



EXCHANGE BUILDING
201

Amey's
Candy

EXCHANGE BANK BUILDING

201 South Monroe St., Tallahassee (Leon
County), Florida

Susan Hamburger

1983

Susan Hamburger

West (entrance) and north facades

Photo no. 1 of 9



EXCHANGE BANK BUILDING

201 South Monroe St., Tallahassee (Leon
County), Florida

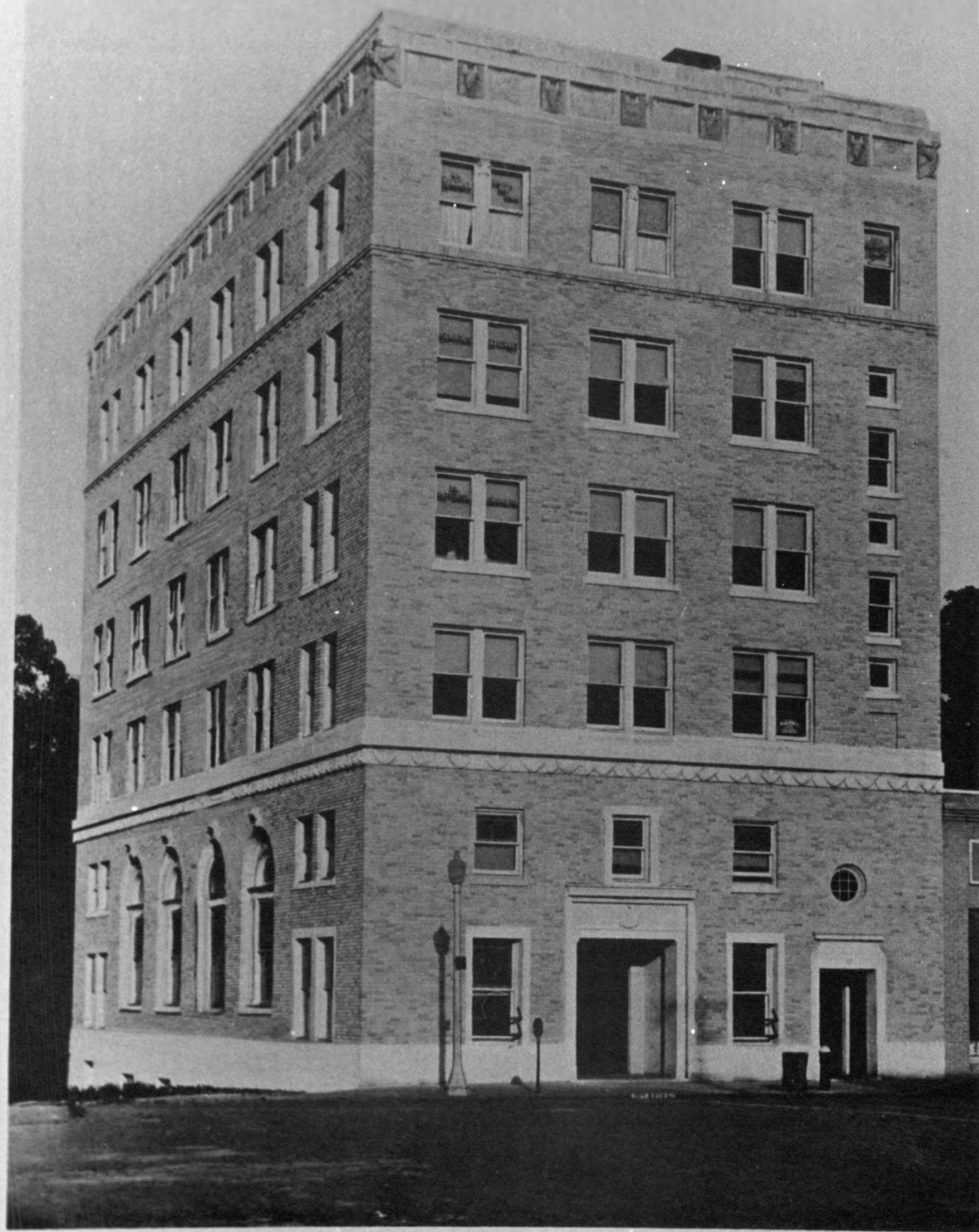
Susan Hamburger

1983

Susan Hamburger

East (rear) and south facades

Photo no. 2 of 9



A NEW BANK BUILDING

EXCHANGE BANK BUILDING

201 South Monroe St., Tallahassee (Leon
County), Florida

Photographer unknown

1928

Copied from 7th/8th Annual Report, City of
Tallahassee Photo no. 3 of 9

West (entrance) and north facades



EXCHANGE BANK BUILDING

201 South Monroe St., Tallahassee (Leon
County), Florida

Susan Hamburger

1983

Susan Hamburger

Cast stone detail over main entrance

Photo no. 4 of 9



EXCHANGE BANK BUILDING

201 South Monroe St., Tallahassee (Leon
County), Florida

Susan Hamburger

1983

Susan Hamburger

Cast stone detail over main entrance

Photo no. 5 of 9



EXCHANGE BANK BUILDING

201 South Monroe St., Tallahassee (Leon
County), Florida

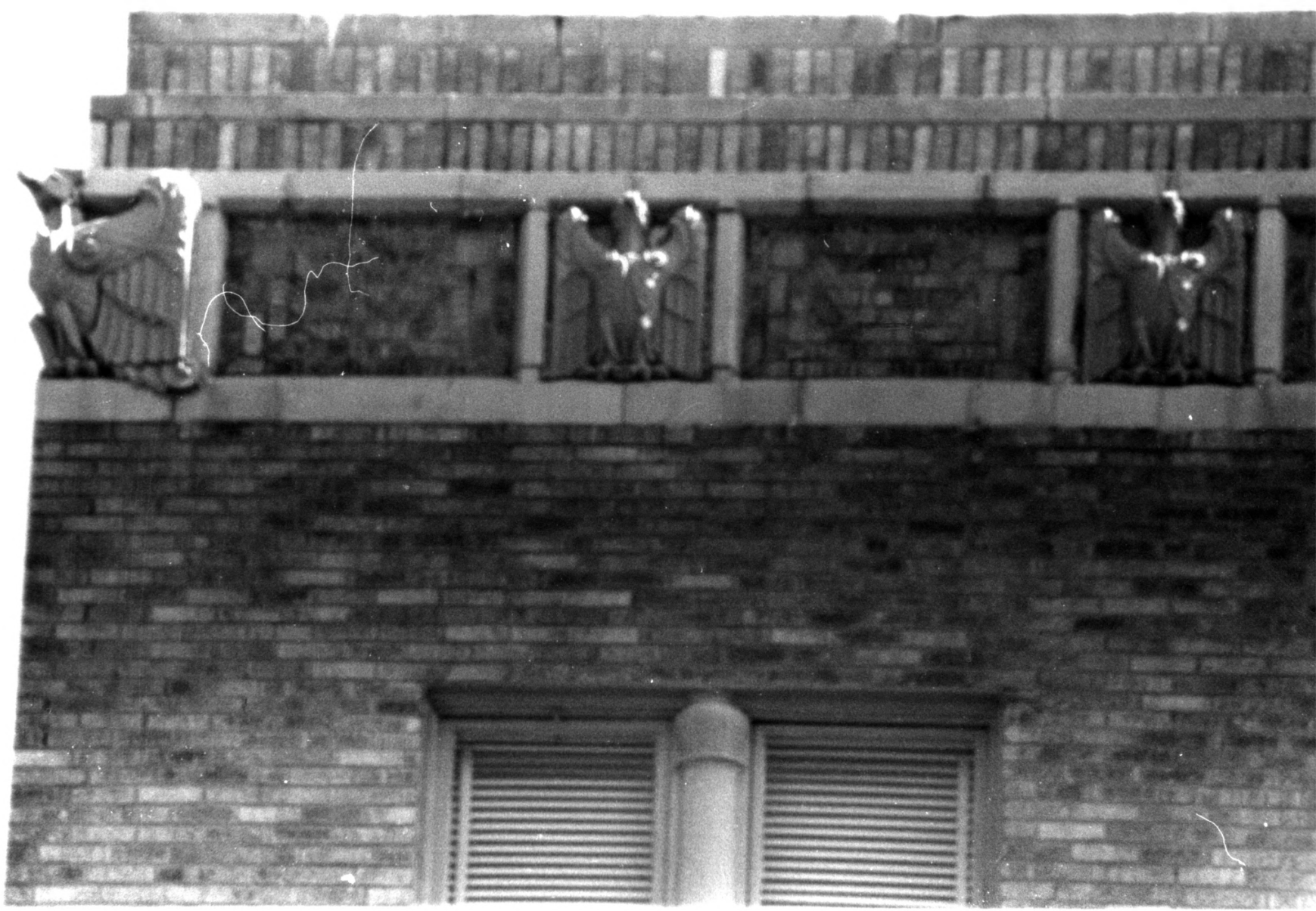
Susan Hamburger

1983

Susan Hamburger

Cast stone detail between 2nd & 3rd floor

Photo no. 6 of 9



EXCHANGE BANK BUILDING

201 South Monroe St., Tallahassee (Leon
County), Florida

Susan Hamburger

1983

Susan Hamburger

Terra cotta detail on cornice

Photo no. 7 of 9



MAIL COLLECTION TIMES

DAY	TIME	STATUS
MON	7:00 AM	
TUE	7:00 AM	
WED	7:00 AM	
THU	7:00 AM	
FRI	7:00 AM	
SAT	7:00 AM	
SUN	7:00 AM	

LETTER BOX

U.S. MAIL

THE NATIONAL SAFE CO.

EXCHANGE BANK BUILDING

201 South Monroe St., Tallahassee (Leon
County), Florida

Susan Hamburger

1983

Susan Hamburger

Mail tube drop, interior lobby

Photo no. 8 of 9

105

J. COLIN ENGLISH
J COLIN ENGLISH, Jr

EXCHANGE BANK BUILDING

201 South Monroe St., Tallahassee (Leon
County), Florida

Susan Hamburger

1983

Susan Hamburger

First floor hallway

Photo no. 9 of 9