

MISSISSIPPI HISTORIC BRIDGE SURVEY

1. Name of Bridge: Waverly Bridge

2. Location

Code 025

County Clay USGS Quadrangle Caledonia

Town/vicinity Waverly vicinity near West Point

UTM coordinates:

Zone 16 Easting 361070 Northing 3714730

Acreage less than one Owner U.S. Corps of Engineers

Verbal boundary description:

Includes the 17.4 by 218 ft. bridge spanning the Tombigbee River on the former line of the Columbus and Greenville Railroad (now abandoned).

3. Description

Number of spans 1 Length overall 218 ft. (66.4 m)

Span types:

(1) Swinging through truss length 218 ft. (66.4 m)

(2) _____ length _____

(3) _____ length _____

Truss span components:

Top chords 2 channel beams and 1 plate laced underneath

End posts 2 channel beams and 1 plate laced underneath

Bottom chords 2 channel beams laced together

Hip verticals _____

Intermediate posts 4 angle bars and 1 plate riveted together to form a composite I-beam

Diagonals 4 angle bars and 1 plate riveted together to form a composite I-beam

Counters _____

Connections rivets

Piers brick

Abutments brick and concrete

Condition fair

Date of construction 1914

Builder Wisconsin Bridge and Iron Co., Milwaukee, Wis.

Source bridge plaque

4. Location of Legal Description

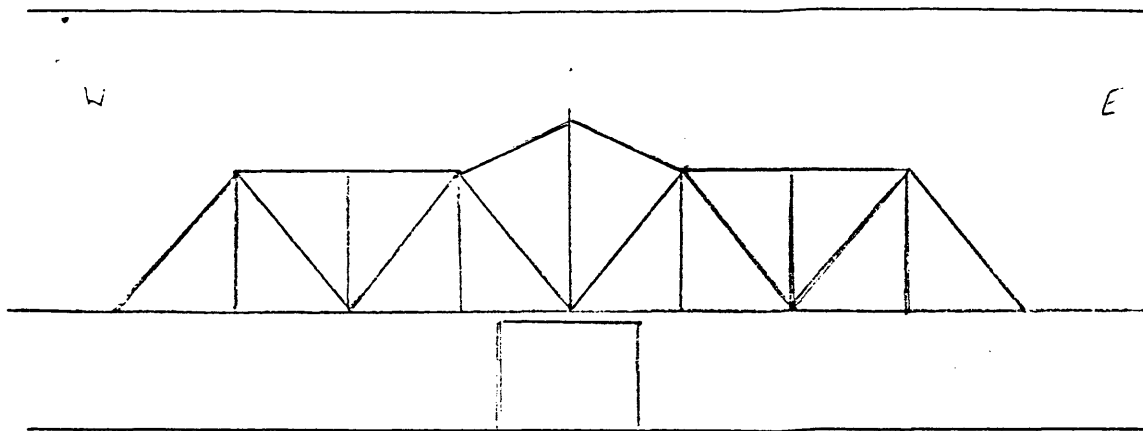
Courthouse, Office of the Chancery Clerk

Registry of Deeds, etc.: Clay County Courthouse

Street & Number: 205 Court Street

City, Town: West Point State: Mississippi

Profile Sketch



5. Significance

Level of significance:

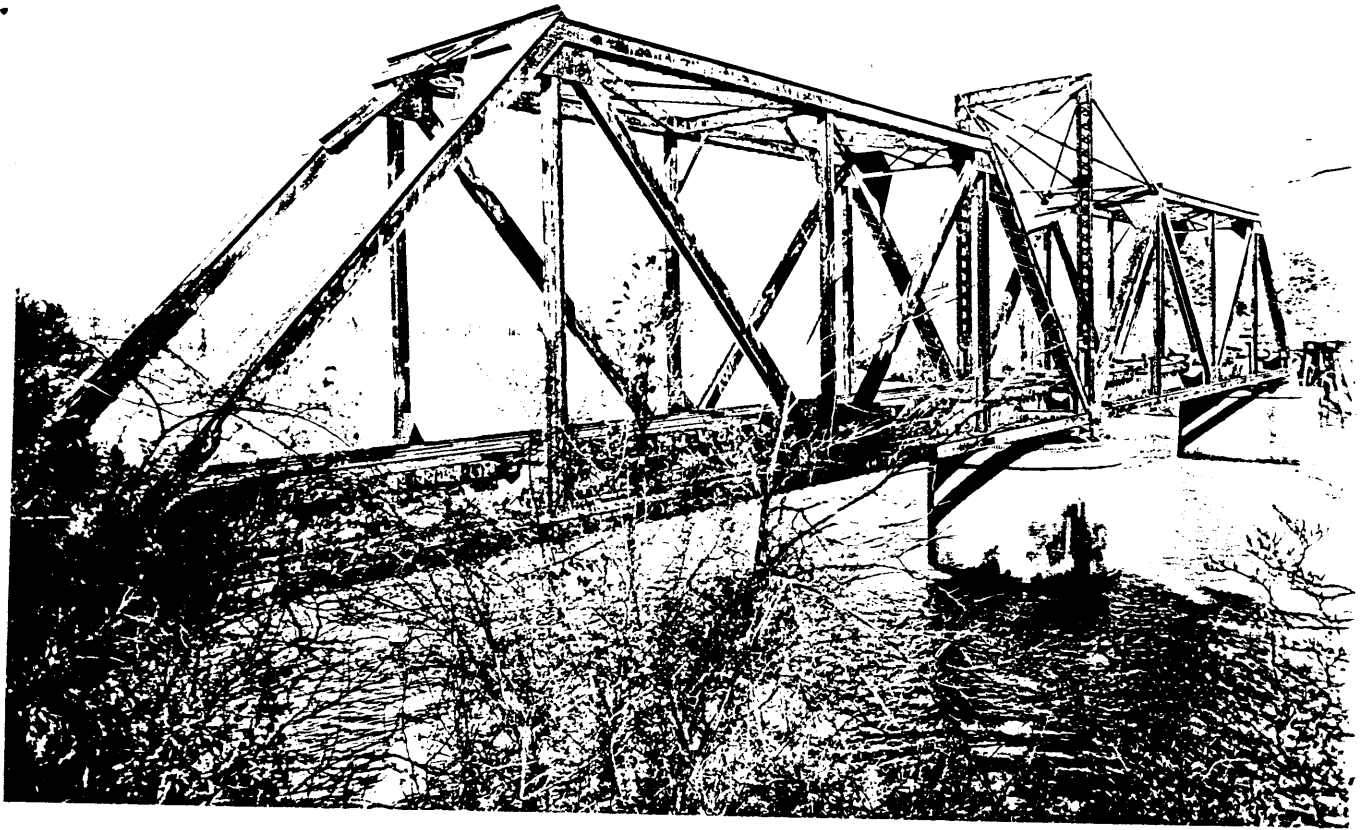
Local ____; State x ; National ____

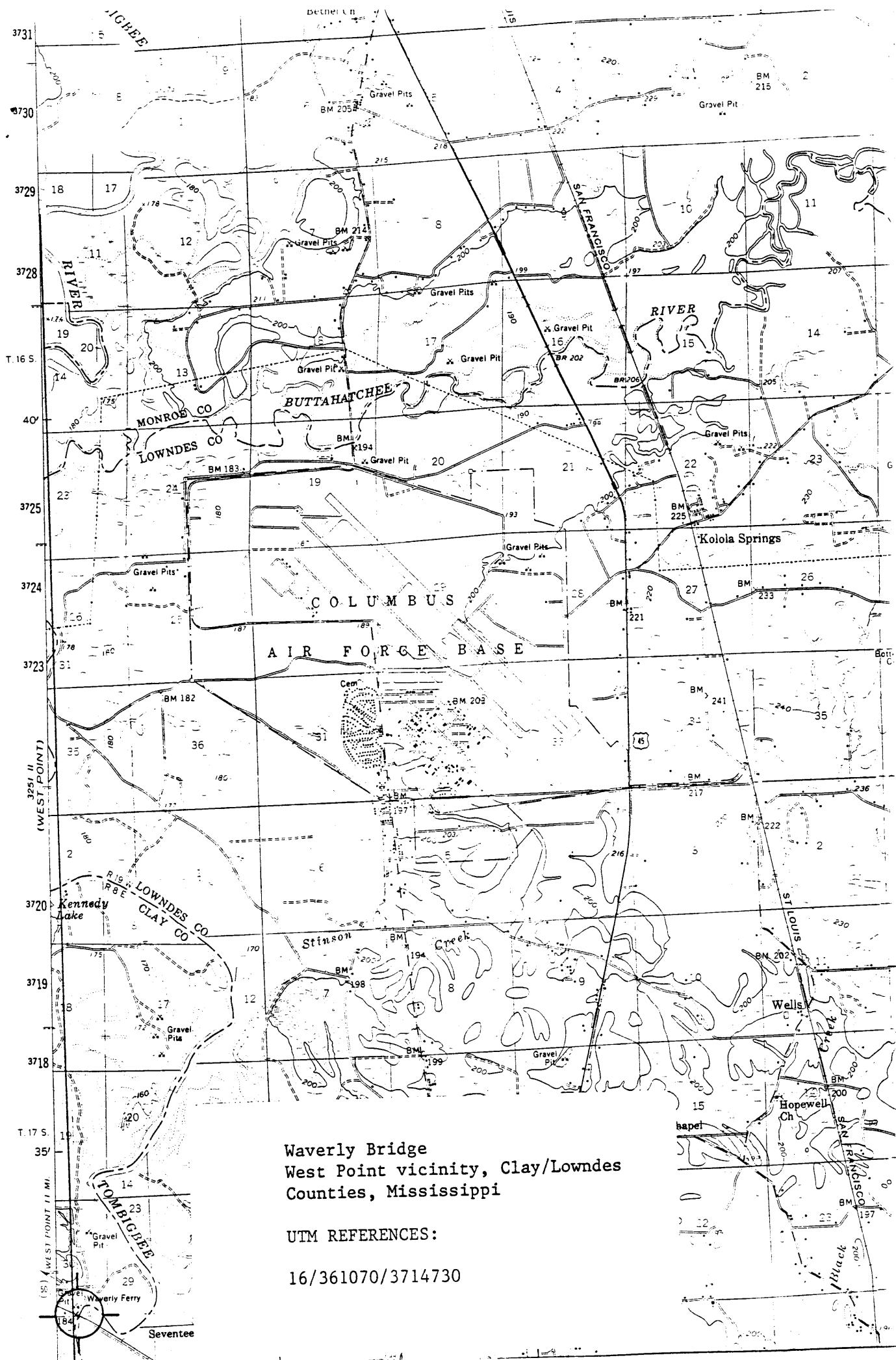
Statement of significance:

This bridge consists of one swinging through truss span, a type that was commonly used in Mississippi during the late 19th and early 20th centuries. It is significant in that it embodies "the distinctive characteristics of a type, period, or method of construction." It has been preserved by agreement with the Mobile District, U.S. Army Corps of Engineers who now plan to convert it into an observation deck for visitors to Waverly Park in which the bridge is located.

6. Form prepared by:

Jack D. Elliott, Jr.
Historical Archaeologist
Division of Historic Preservation
Mississippi Department of Archives and History
P.O. Box 571
Jackson, Mississippi 39205





Waverly Bridge
 West Point vicinity, Clay/Lowndes
 Counties, Mississippi

UTM REFERENCES:

16/361070/3714730