

SHEET NO 7.

RESIDENCE TO BE ERECTED ON N.W. CORNER OF N. MERIDIAN and 32nd STS.  
for ALFRED M. GLOSSBRENNER, ESQ.,  
INDIANAPOLIS.

Alfred Grindle,  
Architect  
306 E. 12th St.  
INDIANAPOLIS.



ELEVATION facing EAST on N. MERIDIAN.  
SCALE - 1/4" = 1 FOOT.

ALFRED M. GLOSSBRENNER MANSION  
Indianapolis, Indiana

Frederick B. Price, Photographer  
Photo taken: September 1977  
Negative on file at:  
Winona Memorial Hospital  
3232 N. Meridian Street  
Indianapolis, Indiana 46208

Copy of original drawing of  
east elevation

Photo #1 of 16

JAN 20 1982

SHEET No 8.

RESIDENCE TO BE ERECTED ON N.W. CORNER OF N. MERIDIAN and 32<sup>nd</sup> STS.  
 for  
 ALFRED M. GLOSSBREMER ESQ.

Alfred Grindle,  
 Architect,  
 608 E. 12<sup>th</sup> St.  
 INDIANAPOLIS.

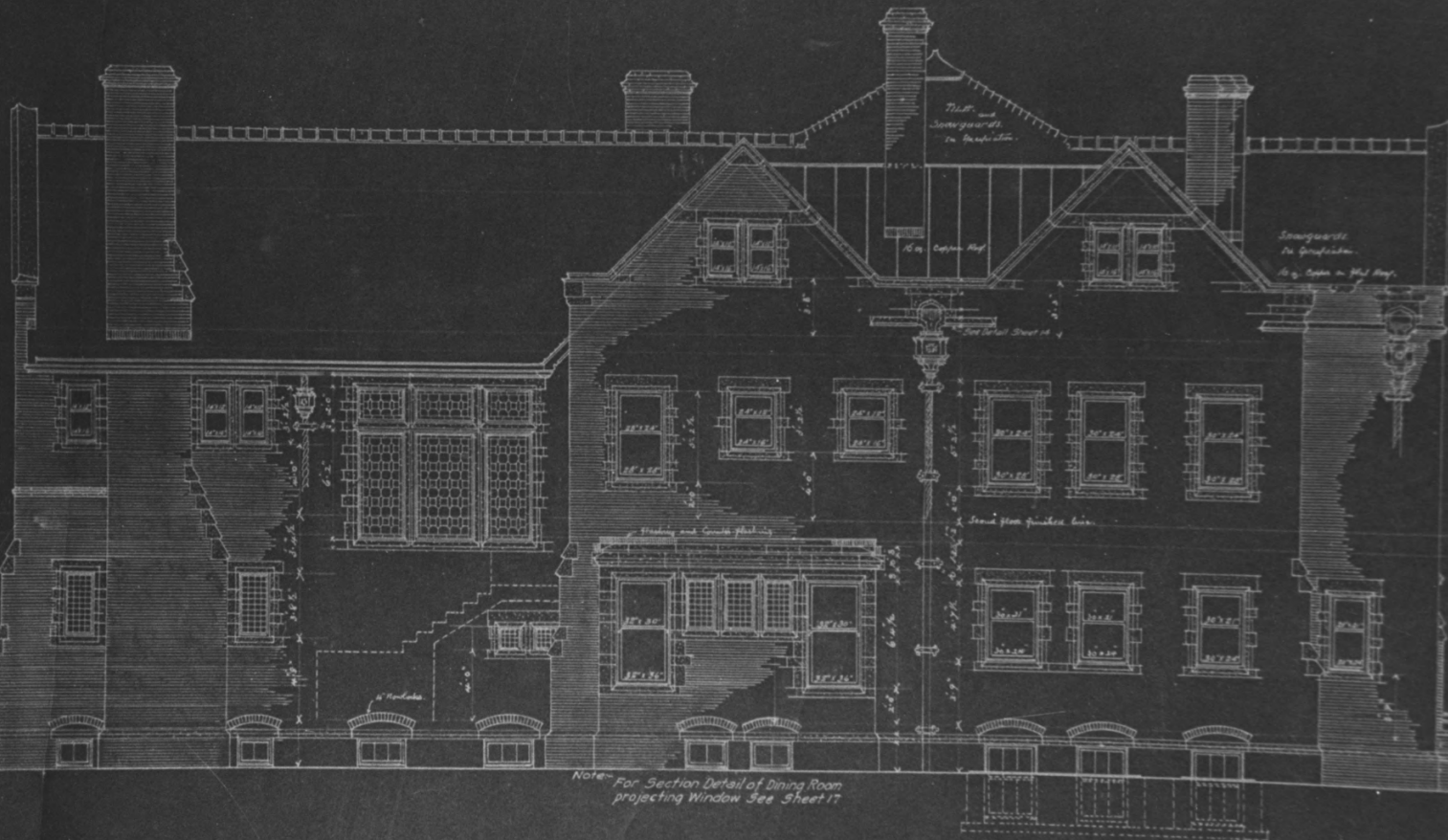
and Siding

Class Room

Second Floor

Third Floor

Basement Floor



ELEVATION facing North.  
 SCALE  $\frac{1}{4}$ " = 1 FOOT.

ALFRED M. GLOSSBRENNER MANSION  
Indianapolis, Indiana

Frederick B. Price, Photographer  
Photo taken: September 1977  
Negative on file at:  
Winona Memorial Hospital  
3232 N. Meridian Street  
Indianapolis, Indiana 46208

Copy of original drawing of  
north elevation

Photo #2

JAN 20 1982

SHEET No 9.

RESIDENCE TO BE ERRECTED ON N.W. CORNER OF N. MERIDIAN and 32nd ST.  
for  
ALFRED M. GLOSSBRENNER ESQ.  
INDIANAPOLIS.

Alfred Grindle,  
Architect  
608 E. 12th St.  
INDIANAPOLIS.



ELEVATION facing SOUTH.

SCALE: ARCH. + 1/2" = 1' 00"

ALFRED M. GLOSSBRENNER MANSION  
Indianapolis, Indiana

Frederick B. Price, Photographer  
Photo taken: September 1977  
Winona Memorial Hospital  
3232 N. Meridian Street  
Indianapolis, Indiana 46208

Copy of original drawing of  
south elevation

Photo #3

JAN 20 1982

SHEET NO 10.

RESIDENCE TO BE ERRECTED ON THE N.W CORNER OF N. MERIDIAN and 32<sup>nd</sup> STS.  
for  
ALFRED M. GLOSSBRENNER ESQ.  
INDIANAPOLIS.

Alfred Grindle  
ARCHITECT.  
608 E. 12<sup>th</sup> Street.  
INDIANAPOLIS.



ELEVATION facing WEST.  
Scale 1/4" = 1 FOOT.

ALFRED M. GLOSSBRENNER MANSION  
Indianapolis, Indiana

Frederick B. Price, Photographer  
Photo taken: September 1977  
Negative on file at:  
Winona Memorial Hospital  
3232 N. Meridian Street  
Indianapolis, Indiana 46208

Copy of original drawing of  
west elevation

Photo #4

JAN 20 1982





ALFRED M. GLOSSBRENNER MANSION  
Indianapolis, Indiana

Frederick B. Price, Photographer  
Photo taken: September 1977  
Negative on file at:  
Winona Memorial Hospital  
3232 N. Meridian Street  
Indianapolis, Indiana 46208

View looking at southeast corner  
of building

Photo #5

JAN 20 1982



ALFRED M. GLOSSBRENNER MANSION  
Indianapolis, Indiana

Frederick B. Price, Photographer  
Photo taken: September 1977  
Negative on file at:  
Winona Memorial Hospital  
3232 N. Meridian Street  
Indianapolis, Indiana 46208

View of main entry, showing stone  
work, projecting window, and  
decorative rafter ends

Photo #6

JAN 20 1982



ALFRED M. GLOSSBRENNER MANSION  
Indianapolis, Indiana

Frederick B. Price, Photographer  
Photo taken: September 1977  
Negative on file at:  
Winona Memorial Hospital  
3232 N. Meridian Street  
Indianapolis, Indiana 46208

View of porte cochere

Photo #7

JAN 20 1982



ALFRED M. GLOSSBRENNER MANSION  
Indianapolis, Indiana

Frederick B. Price, Photographer

Photo taken: September 1977

Negative on file at:

Winona Memorial Hospital

3232 N. Meridian Street

Indianapolis, Indiana 46208

View looking at southwest corner  
of building

Photo #8

JAN 20 1982





ALFRED M. GLOSSBRENNER MANSION  
Indianapolis, Indiana

Frederick B. Price, Photographer  
Photo taken: September 1977  
Negative on file at:  
Winona Memorial Hospital  
3232 N. Meridian Street  
Indianapolis, Indiana 46208

View looking at northeast corner  
of building, showing landscaped  
courtyard

Photo #9

JAN 20 1982



ALFRED M. GLOSSBRENNER MANSION  
Indianapolis, Indiana

Frederick B. Price, Photographer  
Photo taken: September 1977  
Negative on file at:  
Winona Memorial Hospital  
3232 N. Meridian Street  
Indianapolis, Indiana 46208

View of first floor, east room

Photo #10

JAN 20 1982



ALFRED M. GLOSSBRENNER MANSION  
Indianapolis, Indiana

Frederick B. Price, Photographer  
Photo taken: September 1977.

Negative on file at:  
Winona Memorial Hospital  
3232 N. Meridian Street  
Indianapolis, Indiana 46208

View of first floor, north room

Photo #11

JAN 20 1982



ALFRED M. GLOSSBRENNER MANSION  
Indianapolis, Indiana

Frederick B. Price, Photographer  
Photo taken: September 1977  
Negative on file at:  
Winona Memorial Hospital  
3232 N. Meridian Street  
Indianapolis, Indiana 46208

View of first floor south porch

Photo #12

JAN 20 1982





ALFRED M. GLOSSBRENNER MANSION  
Indianapolis, Indiana

Frederick B. Price, Photographer  
Photo taken: September 1977  
Negative on file at:  
Winona Memorial Hospital  
3232 N. Meridian Street  
Indianapolis, Indiana 46208

View of main stair showing art  
glass windows facing north

Photo #13

JAN 20 1982



ALFRED M. GLOSSBRENNER MANSION  
Indianapolis, Indiana

Frederick B. Price, Photographer  
Photo taken: September 1977  
Negative on file at:  
Winona Memorial Hospital  
3232 N. Meridian Street  
Indianapolis, Indiana 46208

View of entry from main stair  
landing

Photo #14

JAN 20 1982



ALFRED M. GLOSSBRENNER MANSION  
Indianapolis, Indiana

Frederick B. Price, Photographer  
Photo taken: September 1977  
Negative on file at:  
Winona Memorial Hospital  
3232 N. Meridian Street  
Indianapolis, Indiana 46208

View of parlor from main stair

Photo #15

JAN 20 1982



LET FRIENDSHIP KINDLE HERE

ALFRED M. GLOSSBRENNER MANSION  
Indianapolis, Indiana

Frederick B. Price, Photographer  
Photo taken: September 1977  
Negative on file at:  
Winona Memorial Hospital  
3232 N. Meridian Street  
Indianapolis, Indiana 46208

View of parlor fireplace

Photo #16 of 16

JAN 20 1982