



Streetscape, South Side of 900 Block of St. Germain Street
St. Cloud Commercial Historic District
Stearns Co., MN
013160-12

Streetscape, Southside of 900 Block of
St. Bermain Street
St. Cloud Commercial Historic District
Stearns Co., Mn

013160-12

Photographer: Gemini Research

Nov., 1996

Mn Historical Society, 345 Kellogg Blvd. W., St. Paul, Mn 55102-1906

Looking SE

From the Collection of the
MINNESOTA HISTORICAL SOCIETY

**DO NOT REPRODUCE
WITHOUT WRITTEN PERMISSION**

NOTICE
This material may be
protected by Copyright Law.
(Title 17 U.S. Code)



Streetscape, North side of 900 Block of St. Germain Street
St. Cloud Commercial Historic District
Stearns Co., mn
013156-1

Streetscape, north side of 900 Block of St. Germain Street 013156-1
St. Cloud Commercial Historic District
Stearns Co., MN
Photographer: Gemini Research
Nov., 1996
Mn Historical Society, 345 Kellogg Blvd. W., St. Paul, Mn 55102-1906
Looking NW

From the Collection of the
MINNESOTA HISTORICAL SOCIETY

**DO NOT REPRODUCE
WITHOUT WRITTEN PERMISSION**

NOTICE
This material may be
protected by Copyright Law.
(Title 17 U.S. Code)



Streetscape, North Side of 400 Block of St. Germain Street
St. Cloud Commercial Historic District
Stearns Co., Mn
013160-9

Streetscape, North Side of 900 Block of

013160-9

St. Germain Street

St. Cloud Commercial Historic District

Stearns Co., Mn

Photographer: Gemini Research

Nov., 1996

Mn Historical Society, 345 Kellogg Blvd. W., St. Paul, Mn 55102-

Looking NE

1906

From the Collection of the
MINNESOTA HISTORICAL SOCIETY

DO NOT REPRODUCE
WITHOUT WRITTEN PERMISSION

NOTICE
This material may be
protected by Copyright Law.
(Title 17 U.S. Code)



Streetscape, North side of 800 Block of St. Germain Street
St. Cloud Commercial Historic District
Stearns Co., MN
013154-01

013154-21

Streetscape, North side of 800 Block of

St. Germain Street

St. Cloud Commercial Historic District

Stearns Co., Mn

Photographer: Gemini Research

Nov., 1996

Mn Historical Society, 345 Kellogg Blvd. W., St. Paul, Mn

55102-1906

Looking NW

From the Collection of the
MINNESOTA HISTORICAL SOCIETY

**DO NOT REPRODUCE
WITHOUT WRITTEN PERMISSION**

NOTICE
This material may be
protected by Copyright Law.
(Title 17 U.S. Code)



Streetscape, South Side of 400 Block of St. Germain Street
St. Cloud Commercial Historic District
Stearns Co., Mn
013154-18

013154-18

Street Scape, South Side of 800 Block of
St. Germain Street
St. Cloud Commercial Historic District
Stearns Co., Mn

Photographer: Gemini Research
Nov., 1996

Mn Historical Society, 345 Kellogg Blvd. W., St. Paul, Mn 55102-1906
Looking SW

From the Collection of the
MINNESOTA HISTORICAL SOCIETY

*DO NOT REPRODUCE
WITHOUT WRITTEN PERMISSION*

NOTICE

This material may be
protected by Copyright Law.
(Title 17 U.S. Code)



Streetscape, south side of 700 Block of St. Germain Street
St. Cloud Commercial Historic District
Stearns Co., Mn
013154-15

Streetscape, south side of 700 Block, of St. Germain Street 013154-15

St. Cloud Commercial Historic District

Stearns Co., Mn

Photographer: Gemini Research

Nov., 1996

Mn Historical Society, 345 Kellogg Blvd. W., St. Paul, Mn 55102-1906

Looking SW

From the Collection of the
MINNESOTA HISTORICAL SOCIETY

**DO NOT REPRODUCE
WITHOUT WRITTEN PERMISSION**

NOTICE
This material may be
protected by Copyright Law.
(Title 17 U.S. Code)



Streetscape, East side of Block D on South 5th. Ave.
St. Cloud Commercial Historic District
Stearns Co., Mn
013155-6

Streetscape, East side of Block D on South 5th Ave.

013155-6

St. Cloud Commercial Historic District

Stearns Co., Mn

Photographer: Gemini Research

Nov., 1996

Mn Historical Society, 345 Kellogg Blvd. W., St. Paul, Mn 55102-1906

Looking SE

From the Collection of the
MINNESOTA HISTORICAL SOCIETY

**DO NOT REPRODUCE
WITHOUT WRITTEN PERMISSION**

NOTICE
This material may be
protected by Copyright Law.
(Title 17 U.S. Code)



Streetscape, north side of 800 Block of St. Germain Street
St. Cloud Commercial Historic District
Stearns Co., MN

013155-2

StreetScape, North Side of 800 Block of St. Germain Street O / 3/55-2
St. Cloud Commercial Historic District
Stearns Co., mn

Photographer: Gemini Research
Nov., 1996

Mn Historical Society, 345 Kellogg Blvd. W., St. Paul, mn 55102-1906

Looking NE

From the Collection of the
MINNESOTA HISTORICAL SOCIETY

**DO NOT REPRODUCE
WITHOUT WRITTEN PERMISSION**

NOTICE
This material may be
protected by Copyright Law.
(Title 17 U.S. Code)



Streetscape, northside of 800 Block of St. Germain Street
St. Cloud Commercial Historic District
Stearns Co., mn
013155-1

013155-1

Streetscape, northside of 800 Block of
St. Germain Street
St. Cloud Commercial Historic District

Stearns Co., MN

Photographer: Gemini Research

Nov., 1996

MN Historical Society, 345 Kellogg Blvd. W., St. Paul, MN 55102-1906

Looking NW

From the Collection of the
MINNESOTA HISTORICAL SOCIETY

**DO NOT REPRODUCE
WITHOUT WRITTEN PERMISSION**

NOTICE
This material may be
protected by Copyright Law.
(Title 17 U.S. Code)



Streetscape, north side of 700 Block of St. Germain St.
St. Cloud Commercial Historic District
Stearns Co., MN
013159-3

Streetscape, northside of 700 Block of St. Germain
Street

013159-3

St. Cloud Commercial Historic District

Stearns Co., Mn

Photographer: Gemini Research

Nov., 1996

Mn Historical Society, 345 Kellogg Blvd. W., St. Paul, Mn 55102-1906

Looking NE

From the Collection of the
MINNESOTA HISTORICAL SOCIETY

**DO NOT REPRODUCE
WITHOUT WRITTEN PERMISSION**

NOTICE
This material may be
protected by Copyright Law.
(Title 17 U.S. Code)



Zapp National Bank (NON-CONTRIBUTING)
St. Cloud Commercial Historic District
Stearns Co., MN
013159-8

Zapp National Bank (non-contributing)

013159-8

717-719 W. St. Germain Street

St. Cloud Commercial Historic District

Stearns Co., Mn

Photographer: Gemini Research

Nov., 1996

Mn Historical Society, 345 Kellogg Blvd. W., St. Paul, Mn 55102-1906

Looking NE

From the Collection of the
MINNESOTA HISTORICAL SOCIETY

**DO NOT REPRODUCE
WITHOUT WRITTEN PERMISSION**

NOTICE
This material may be
protected by Copyright Law.
(Title 17 U.S. Code)



Vossberg Building
St. Cloud Commercial Historic District
Stearns Co., Mn
013159-9

013159-9

Vossberg Building
801 W. St. Germain St.
St. Cloud Commercial Historic District
Stearns Co., Mn
Photographer: Gemini Research
Nov., 1996
Mn Historical Society, 345 Kellogg Blvd. W., St. Paul, Mn 55102-1908
Looking NW

From the Collection of the
MINNESOTA HISTORICAL SOCIETY

**DO NOT REPRODUCE
WITHOUT WRITTEN PERMISSION**

NOTICE
This material may be
protected by Copyright Law.
(Title 17 U.S. Code)



Northern States Power
St. Cloud Commercial Historic District
Stearns Co., Mn
013159-10

Northern States Power

013159-10

800 W. St. Germain St.

St. Cloud Commercial Historic District

Stearns Co., Mn

Photographer! Gemini Research

Nov., 1996

Mn Historical Society, 345 Kellogg Blvd. W., St. Paul, Mn 55102-1906

Looking SW

From the Collection of the
MINNESOTA HISTORICAL SOCIETY

**DO NOT REPRODUCE
WITHOUT WRITTEN PERMISSION**

NOTICE
This material may be
protected by Copyright Law.
(Title 17 U.S. Code)



Molitor Rexall Drug (non-contributing)
St. Cloud Commercial Historic District
Stearns Co., Mn
013159-12

Molitor Rexall Drug (non-contributing)
804-808 W. St. Germain St.
St. Cloud Commercial Historic District
Stearns Co., Mn

013159-12

Photographer: Gemini Research
Nov., 1996

Mn Historical Society, 345 Kellogg Blvd. W., St. Paul, Mn 55102-1906

Looking S

From the Collection of the
MINNESOTA HISTORICAL SOCIETY

**DO NOT REPRODUCE
WITHOUT WRITTEN PERMISSION**

NOTICE
This material may be
protected by Copyright Law.
(Title 17 U.S. Code)



Security Building and Loan Association (non-contributing)
St. Cloud Commercial Historic District

Stearns Co., Mn

013159-14

Security Building and Loan Association (non-contributing) 013159-14

822 W. St. Germain St.

St. Cloud Commercial Historic District

Stearns Co., MN

Photographer! Gemini Research

NOV., 1996

MN Historical Society, 345 Kellogg Blvd. W., St. Paul, MN 55102-1906

Looking S

From the Collection of the
MINNESOTA HISTORICAL SOCIETY

**DO NOT REPRODUCE
WITHOUT WRITTEN PERMISSION**

NOTICE
This material may be
protected by Copyright Law.
(Title 17 U.S. Code)



Tenvoorde Building (non-contributing)
St. Cloud Commercial Historic District
Stearns Co., Mn
013159-23

013159-23

Ten Voorde Building (non-contributing)

823 W. St. Bermain St.

St. Cloud Commercial Historic District

Stearns Co., Mn

Photographer: Gemini Research

Nov., 1996

Mn Historical Society, 345 Kellogg Blvd. W., St. Paul, Mn 55102-

1906

Looking N

From the Collection of the
MINNESOTA HISTORICAL SOCIETY

**DO NOT REPRODUCE
WITHOUT WRITTEN PERMISSION**

NOTICE
This material may be
protected by Copyright Law.
(Title 17 U.S. Code)



St. Mary's Building
St. Cloud Commercial Historic District
Stearns Co., MN
013159-15

St. Mary's Building
830-900 W. St. Germain St.

013159 - 15

St. Cloud Commercial Historic District
Stearns Co., Mn

Photographer: Gemini Research

Nov., 1996

MN Historical Society, 345 Kellogg Blvd. W., St. Paul, Mn 55102-
1906

Looking SW

From the Collection of the
MINNESOTA HISTORICAL SOCIETY

**DO NOT REPRODUCE
WITHOUT WRITTEN PERMISSION**

NOTICE
This material may be
protected by Copyright Law.
(Title 17 U.S. Code)



Long Building
St. Cloud Commercial Historic District
Stearns Co., MN
013161-10

Long Building

013161-10

512-514 W. St. Germain St.

St. Cloud Commercial Historic District

Stearns Co., Mn

Photographer: Gemini Research

Nov., 1996

Mn Historical Society, 345 Kellogg Blvd. W., St. Paul, Mn 55102-1906

Looking S

From the Collection of the
MINNESOTA HISTORICAL SOCIETY

**DO NOT REPRODUCE
WITHOUT WRITTEN PERMISSION**

NOTICE
This material may be
protected by Copyright Law.
(Title 17 U.S. Code)



N. Lahr Building
St. Cloud Commercial Historic District
Stearns Co., Mn
013154-10

013154-10

N. Lahr Building
601-605 W. St. Germain Street
St. Cloud Commercial Historic District
Stearns Co., Mn
Photographer: Gemini Research
Nov., 1996

Mn Historical Society, 345 Kellogg Blvd. W., St. Paul, Mn 55102-1906
Looking NW

From the Collection of the
MINNESOTA HISTORICAL SOCIETY

**DO NOT REPRODUCE
WITHOUT WRITTEN PERMISSION**

NOTICE
This material may be
protected by Copyright Law.
(Title 17 U.S. Code)



Edelbrock Grocery and Puff Bakery (non-contributing)
St. Cloud Commercial Historic District
Stearns Co., MN
013161-17

Edelbrock Grocery and Pastry Bakery (non-contributing) 013161-17
607-609 W. St. Germain St.

St. Cloud Commercial Historic District

Stearns Co., Mn

Photographer: Gemini Research

Nov., 1996

Mn Historical Society, 345 Kellogg Blvd. W., St. Paul, Mn 55102-1906

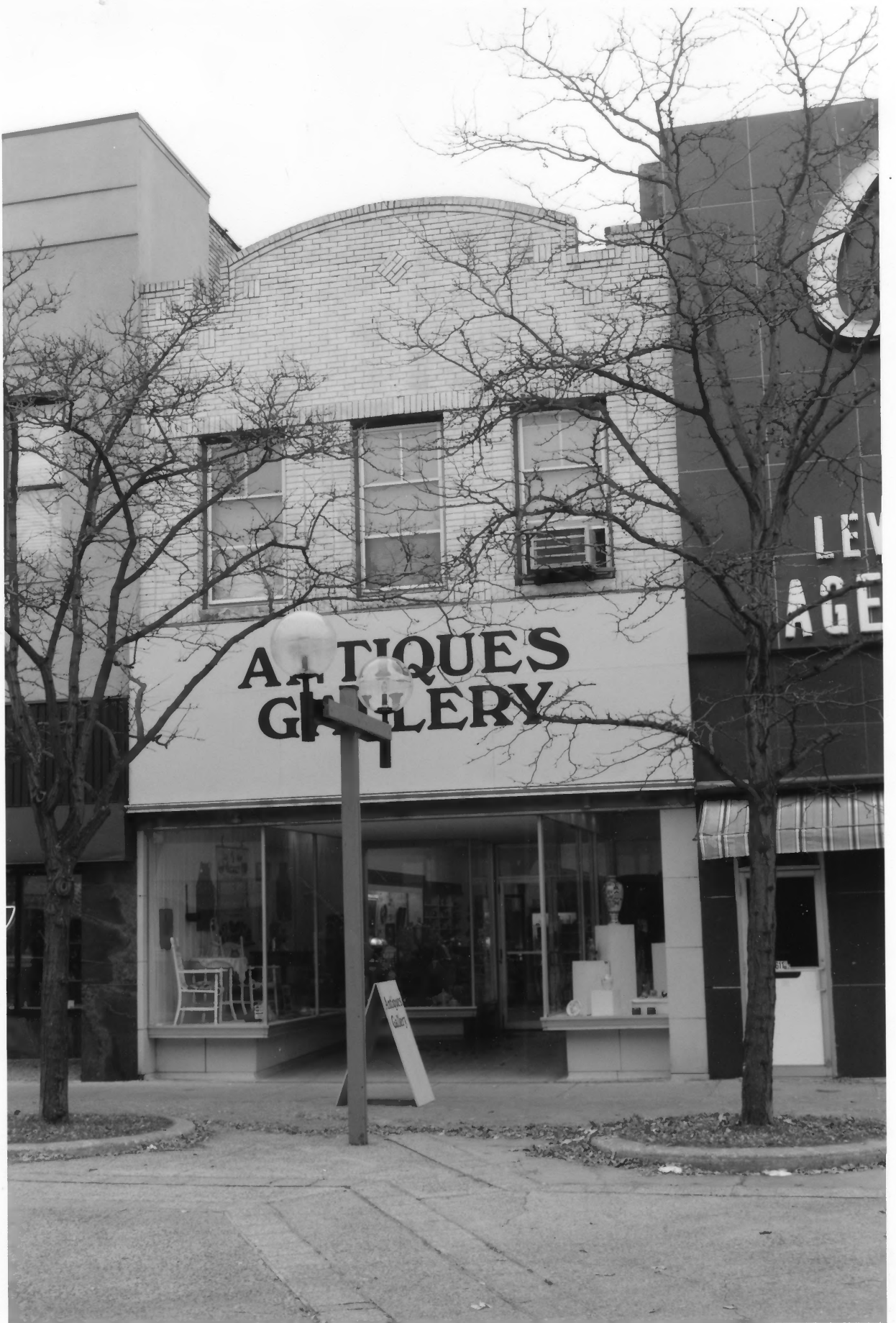
Looking N

From the Collection of the
MINNESOTA HISTORICAL SOCIETY

DO NOT REPRODUCE
WITHOUT WRITTEN PERMISSION

NOTICE
This material may be
protected by Copyright Law.
(Title 17 U.S. Code)

Schumacher Boots and Shoes
St. Cloud Commercial Historic District
Stearns Co., MN
013161-18



Schumacher Boots and Shoes

013161-18

611 W. St. Germain St.

St. Cloud Commercial Historic District

Stearns Co., Mn

Photographer: Gemini Research
Nov., 1996

Mn Historical Society, 345 Kellogg Blvd. W., St. Paul, Mn

55102-1906

Looking N

From the Collection of the
MINNESOTA HISTORICAL SOCIETY

**DO NOT REPRODUCE
WITHOUT WRITTEN PERMISSION**

NOTICE
This material may be
protected by Copyright Law.
(Title 17 U.S. Code)



Hotel Spaniol
St. Cloud Commercial Historic District
Stearns Co., MN
013161-20

Hotel Spaniol

013161-20

11-13 6th. Ave. No.

St. Cloud Commercial Historic District

Stearns Co., Mn

photographer: Gemini Research

Nov., 1996.

Mn Historical Society, 345 Kellogg Blvd. W., St. Paul, Mn

55102-1906

Looking W

From the Collection of the
MINNESOTA HISTORICAL SOCIETY

DO NOT REPRODUCE
WITHOUT WRITTEN PERMISSION

NOTICE
This material may be
protected by Copyright Law.
(Title 17 U.S. Code)



Mitchell - Metzroth Building
St. Cloud Commercial Historic District
Stearns Co., Mn
013158-8

Mitchell-Metzroth Building
11-17 5th Ave. So.

013158-8

St. Cloud Commercial Historic District

Stearns Co., Mn

photographer: Gemini Research

Nov., 1996

Mn Historical Society, 345 Kellogg Blvd. W., St. Paul, Mn 55102-1906

Looking nw

From the Collection of the
MINNESOTA HISTORICAL SOCIETY

DO NOT REPRODUCE
WITHOUT WRITTEN PERMISSION

NOTICE
This material may be
protected by Copyright Law.
(Title 17 U.S. Code)



Gorton Building
St. Cloud Commercial Historic District
Stearns Co., Mn
013158-11

Gorton Building
30 5th Ave. So.

St. Cloud Commercial Historic District

Stearns Co., Mn

Photographer: Gemini Research
Nov. 1996

Mn Historical Society, 345 Kellogg Blvd. W., St. Paul, Mn 55102-1906

Looking E

013158-11

From the Collection of the
MINNESOTA HISTORICAL SOCIETY

**DO NOT REPRODUCE
WITHOUT WRITTEN PERMISSION**

NOTICE
This material may be
protected by Copyright Law.
(Title 17 U.S. Code)



B.P.O.E. Building
St. Cloud Commercial Historic District
Stearns Co., MN
013158-12

B. P. O. E. Building
22-24 5th. Ave. So.

013158-12

St. Cloud Commercial Historic District
Stearns Co., Mn

Photographer: Gemini Research
Nov., 1996

Mn Historical Society, 345 Kellogg Blvd. W., St. Paul, Mn 55102-1906
Looking E

From the Collection of the
MINNESOTA HISTORICAL SOCIETY

**DO NOT REPRODUCE
WITHOUT WRITTEN PERMISSION**

NOTICE
This material may be
protected by Copyright Law.
(Title 17 U.S. Code)



First National Bank
St. Cloud Commercial Historic District
Stearns Co., Mn
013156-18

First National Bank

501-503 W. St. Germain St.

St. Cloud Commercial Historic District

Stearns Co., Mn

Photographer: Gemini Research

Nov., 1996

Mn Historical Society, 345 Kellogg Blvd. W., St. Paul, Mn 55102-1906

LOOKING NW

013156-18

From the Collection of the
MINNESOTA HISTORICAL SOCIETY

DO NOT REPRODUCE
WITHOUT WRITTEN PERMISSION

NOTICE
This material may be
protected by Copyright Law.
(Title 17 U.S. Code)



Schmid meat market (non-Contributing)
St. Cloud Commercial Historic District
Stearns Co., Mn
013154-22

Schmid Meat Market (non-contributing)
811 W. St. Germain St.
St. Cloud Commercial Historic District
Stearns Co., Mn

013154-22

Photographer: Gemini Research
Nov., 1996

Mn Historical Society, 345 Kellogg Blvd. W., St. Paul, Mn 55102-1906
Looking NW

From the Collection of the
MINNESOTA HISTORICAL SOCIETY

**DO NOT REPRODUCE
WITHOUT WRITTEN PERMISSION**

NOTICE
This material may be
protected by Copyright Law.
(Title 17 U.S. Code)



American National Bank (non-Contributing)
St. Cloud Commercial Historic District
Stearns Co., MN
013153-10

American National Bank (non-contributing)

013153-10

700 W. St. Germain Street

St. Cloud Commercial Historic District

Stearns County, MN

Nov., 1996

Mn Historical Society, 345 Kellogg Blvd. W., St. Paul, Mn 55102-1906.

Looking SW

From the Collection of the
MINNESOTA HISTORICAL SOCIETY

**DO NOT REPRODUCE
WITHOUT WRITTEN PERMISSION**

NOTICE
This material may be
protected by Copyright Law.
(Title 17 U.S. Code)



Edelbrock Brothers Boots & Shoes
St. Cloud Commercial Historic District
Stearns Co., Mn
013153-9

Edelbrock Brothers Boots and Shoes

013153-9

701 W. St. Germain Street

St. Cloud Commercial Historic District

Photographer: Gemini Research
Stearns Co., MN

NOV. 1996

MN Historical Society, 345 Kellogg Blvd. W., St. Paul, MN 55102-1906

Looking NW

From the Collection of the
MINNESOTA HISTORICAL SOCIETY

**DO NOT REPRODUCE
WITHOUT WRITTEN PERMISSION**

NOTICE
This material may be
protected by Copyright Law.
(Title 17 U.S. Code)



Granite Exchange
St. Cloud Commercial Historic District
Stearns Co., Mn
013155-4

013155-4

Granite Exchange
816 W. St. Germain Street
St. Cloud Commercial Historic District
Stearns Co., mn

Photographer: Gemini Research
Nov., 1996

mn Historical Society, 345 Kellogg Blvd. W., St. Paul, mn 55102-1906
Looking SE

From the Collection of the
MINNESOTA HISTORICAL SOCIETY

**DO NOT REPRODUCE
WITHOUT WRITTEN PERMISSION**

NOTICE
This material may be
protected by Copyright Law.
(Title 17 U.S. Code)



Daniel Funeral Home
St. Cloud Commercial Historic District
Stearns Co., Mn
013153-17

Daniel Funeral Home

13 7th Avenue No.

St. Cloud Commercial Historic District

Stearns Co., Mn

Photographer: Gemini Research

Nov., 1996

Mn Historical Society, 345 Kellogg Blvd. W., St. Paul, Mn 55102-1906

Looking w

From the Collection of the
MINNESOTA HISTORICAL SOCIETY

**DO NOT REPRODUCE
WITHOUT WRITTEN PERMISSION**

NOTICE
This material may be
protected by Copyright Law.
(Title 17 U.S. Code)

013153-17



Thielman Hardware

St. Cloud Commercial Historic District

Stearns Co., MN

013153-21

013153-21

Thielman Hardware

705 W. St. Germain Street

St. Cloud Commercial Historic District

Stearns Co., Mn

Photographer: Gemini Research

Nov., 1996

Mn Historical Society, 345 Kellogg Blvd. W., St. Paul, Mn 55102-1906

Looking N

From the Collection of the
MINNESOTA HISTORICAL SOCIETY

DO NOT REPRODUCE
WITHOUT WRITTEN PERMISSION

NOTICE
This material may be
protected by Copyright Law.
(Title 17 U.S. Code)

Schmalen Saloon
St. Cloud Commercial Historic District
Stearns Co., MN
013153-24



013153-24

Schmalen Saloon

715 W. St. Germain St.

St. Cloud Commercial Historic District

Stearns Co., Mn

Photographer: Gemini Research

Nov., 1996

Mn Historical Society, 345 Kellogg Blvd. W., St. Paul, Mn 55102-1906

Looking N

From the Collection of the
MINNESOTA HISTORICAL SOCIETY

**DO NOT REPRODUCE
WITHOUT WRITTEN PERMISSION**

NOTICE
This material may be
protected by Copyright Law.
(Title 17 U.S. Code)

Kusterman Saloon
St. Cloud Commercial Historic District
Stearns Co., MN
013159-2



013159-2

Kusterman Saloon
710 W. St. Germain St.

St. Cloud Commercial Historic District

Stearns Co., MN

Photographer: Gemini Research

Nov., 1996

MN Historical Society, 345 Kellogg Blvd. W., St. Paul, MN 55102-1906

Looking S

From the Collection of the
MINNESOTA HISTORICAL SOCIETY

**DO NOT REPRODUCE
WITHOUT WRITTEN PERMISSION**

NOTICE
This material may be
protected by Copyright Law.
(Title 17 U.S. Code)



United States Post office
St. Cloud Commercial Historic District
Stearns Co., mn
013159-7

United States Post Office
720 W. St. Germain St.

013159-7

St. Cloud Commercial Historic District

Stearns Co., Mn

Photographer: Gemini Research
noo., 1996

Mn Historical Society, 345 Kellogg Blvd. W., St. Paul, Mn 55102-1906
Looking SE

From the Collection of the
MINNESOTA HISTORICAL SOCIETY

**DO NOT REPRODUCE
WITHOUT WRITTEN PERMISSION**

NOTICE
This material may be
protected by Copyright Law.
(Title 17 U.S. Code)