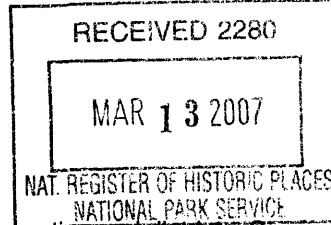


United States Department of the Interior National Park Service National Register of Historic Places Registration Form



345

This form is for use in nominating or requesting determination for individual properties and districts. See instruction in *How to Complete the National Register of Historic Places Registration Form* (National Register Bulletin 16A). Complete each item by marking "x" in the appropriate box or by entering the information requested. If an item does not apply to the property being documented, enter "N/A" for "not applicable." For functions, architectural classification, materials and areas of significance, enter only categories and subcategories from the instructions. Place additional entries and narrative items on continuation sheets (NPS Form 10-900a). Use a typewriter, word processor, or computer, to complete all items.

1. Name of Property

historic name Sedgwick County Courthouse

other names/site number 5SW.81

2. Location

street & number 315 Cedar Street [N/A] not for publication

city or town Julesburg [N/A] vicinity

state Colorado code CO county Sedgwick code 115 zip code 80737

3. State/Federal Agency Certification

As the designated authority under the National Historic Preservation Act, as amended, I hereby certify that this [X] nomination [] request for determination of eligibility meets the documentation standards for registering properties in the National Register of Historic Places and meets the procedural and professional requirements set forth in 36 CFR Part 60. In my opinion, the property [X] meets [] does not meet the National Register criteria. I recommend that this property be considered significant [] nationally [] statewide [X] locally. ([] See continuation sheet for additional comments.)

Virginia Cortez State Historic Preservation Officer 2/21/07
Signature of certifying official/Title Date

Office of Archaeology and Historic Preservation, Colorado Historical Society
State or Federal agency and bureau

In my opinion, the property [] meets [] does not meet the National Register criteria.
([] See continuation sheet for additional comments.)

Signature of certifying official/Title Date

State or Federal agency and bureau

4. National Park Service Certification

I hereby certify that the property is:

- entered in the National Register
[] See continuation sheet.
- determined eligible for the National Register
[] See continuation sheet.
- determined not eligible for the National Register.
- removed from the National Register
- other, explain
[] See continuation sheet.

James McCalland Signature of the Keeper 4/24/07 Date of Action

Sedgwick County Courthouse
Name of Property

Sedgwick County, Colorado
County/State

5. Classification

Ownership of Property

(Check as many boxes as apply)

- private
- public-local
- public-State
- public-Federal

Category of Property

(Check only one box)

- building(s)
- district
- site
- structure
- object

Number of Resources within Property

(Do not count previously listed resources.)

Contributing

Noncontributing

2	1	buildings
0	0	sites
0	0	structures
0	0	objects
2	1	Total

Name of related multiple property listing.

(Enter "N/A" if property is not part of a multiple property listing.)

New Deal Resources on Colorado's Eastern Plains

Number of contributing resources previously listed in the National Register.

0

6. Function or Use

Historic Function

(Enter categories from instructions)

Government/Courthouse
Government/Correctional Facility

Current Functions

(Enter categories from instructions)

Government/Courthouse
Government/Correctional Facility

7. Description

Architectural Classification

(Enter categories from instructions)

Late 19th and Early 20th Century American Movements
Other: WPA Art Deco

Materials

(Enter categories from instructions)

foundation Concrete
walls Brick

roof Asphalt
other Terra Cotta

Narrative Description

(Describe the historic and current condition of the property on one or more continuation sheets.)

Sedgwick County Courthouse
Name of Property

Sedgwick County, Colorado
County/State

8. Statement of Significance

Applicable National Register Criteria

(Mark "x" in one or more boxes for the criteria qualifying the property for National Register listing.)

- A** Property is associated with events that have made a significant contribution to the broad patterns of our history.
- B** Property is associated with the lives of persons significant in our past.
- C** Property embodies the distinctive characteristics of a type, period, or method of construction or represents the work of a master, or possesses high artistic values, or represents a significant and distinguishable entity whose components lack individual distinction.
- D** Property has yielded, or is likely to yield, information important in prehistory or history.

Criteria Considerations

(Mark "x" in all the boxes that apply.)

Property is:

- A** owned by a religious institution or used for religious purposes.
- B** removed from its original location.
- C** a birthplace or grave.
- D** a cemetery.
- E** a reconstructed building, object, or structure.
- F** a commemorative property.
- G** less than 50 years of age or achieved significance within the past 50 years.

Narrative Statement of Significance

(Explain the significance of the property on one or more continuation sheets.)

9. Major Bibliographical References

Bibliography

(Cite the books, articles and other sources used in preparing this form on one or more continuation sheets.)

Previous documentation on file (NPS):

- preliminary determination of individual listing (36 CFR 67) has been requested
- previously listed in the National Register
- previously determined eligible by the National Register
- designated a National Historic Landmark
- recorded by Historic American Buildings Survey

- recorded by Historic American Engineering Record

Areas of Significance

(Enter categories from instructions)

Social History

Politics/Government

Architecture

Periods of Significance

1938 - 1956

Significant Dates

1938

1939

Significant Person(s)

(Complete if Criterion B is marked above).

N/A

Cultural Affiliation

N/A

Architect/Builder

Jamieson, W. Gordon

Stiffler, R. Ewing

Primary location of additional data:

- State Historic Preservation Office
- Other State Agency
- Federal Agency
- Local Government
- University
- Other

Name of repository:

Colorado Historical Society

Sedgwick County Courthouse
Name of Property

Sedgwick County, Colorado
County/State

10. Geographical Data

Acreeage of Property 2.5

UTM References

(Place additional UTM references on a continuation sheet.)

1. 13 730130 4540850 (NAD 27)

Zone Easting Northing

2. Zone Easting Northing

3. Zone Easting Northing

4. Zone Easting Northing

[] See continuation sheet

Verbal Boundary Description

(Describe the boundaries of the property on a continuation sheet.)

Boundary Justification

(Explain why the boundaries were selected on a continuation sheet.)

11. Form Prepared By

name/title Abbey Christman, Survey Coordinator (for the property owner)

organization Colorado Preservation, Inc. date 9/2006

street & number 333 West Colfax Avenue, Suite 300 telephone 303-893-4260

city or town Denver state Colorado zip code 80204

Additional Documentation

Submit the following items with the completed form:

Continuation Sheets

Maps

A **USGS map** (7.5 or 15 minute series) indicating the property's location.

A **Sketch map** for historic districts and properties having large acreage or numerous resources.

Photographs

Representative **black and white photographs** of the property.

Additional Items

(Check with the SHPO or FPO for any additional items)

Property Owner

(Complete this item at the request of SHPO or FPO.)

name Sedgwick County, Board of County Commissioners (contact: Donald Kizer)

street & number 315 Cedar Street telephone 970-474-2485

city or town Julesburg state Colorado zip code 80737

Paperwork Reduction Act Statement: This information is being collected for applications to the National Register of Historic Places to nominate properties for listing or determine eligibility for listing, to list properties, and to amend existing listings. Response to this request is required to obtain a benefit in accordance with the National Historic Preservation Act, as amended (16 U.S.C. 470 *et seq.*)

Estimated Burden Statement: Public reporting burden for this form is estimated to average 18.1 hours per response including time for reviewing instructions, gathering and maintaining data, and completing and reviewing the form. Direct comments regarding this burden estimate or any aspect of this form to the Chief, Administrative Services Division, National Park Service, P.O. Box 37127, Washington, DC 20013-7127, and the Office of Management and Budget, Paperwork Reductions Projects (1024-0018), Washington, DC 20503.

United States Department of the Interior
National Park Service
National Register of Historic Places
Continuation Sheet

Sedgwick County Courthouse
Sedgwick County, Colorado

Section number 7 Page 1

(New Deal Resources on Colorado's Eastern Plains MPS)

DESCRIPTION

Sedgwick County lies in the northeastern corner of Colorado. The Sedgwick County Courthouse is located in the middle of a town block, near the center of the town of Julesburg. The block is bounded by Cedar Street, 3rd Street, Pine Street, and 4th Street. Another WPA project, the Julesburg Public Library (listed in the Colorado State Register of Historic Properties) is located across the street. The courthouse is surrounded by a level lawn with deciduous shade trees. A paved parking area is located directly to the rear of the courthouse. Two other buildings are located on the block with the courthouse. A small brick garage, constructed between 1942 and 1953, is located directly to the rear of the courthouse. A brick annex, constructed in 2002, is located at the western corner of the lot.

The rectangular-plan courthouse is constructed of cast-in-place reinforced concrete faced with multi-hued buff brick and terra cotta trim. The building measures 58' x 80'. A three-story central block is flanked by two-story wings to the northeast and southwest. A raised basement creates the appearance of an additional story. The facade faces southeast onto Cedar Street, with a secondary entrance located on the southwest side. A tall brick chimney is located at the north corner of the building.

The building rests on a concrete foundation, which also functions as the sill course for the basement level windows. A terra cotta band serves as the lintel course for the basement windows. Terra cotta bands also form sill and lintel courses for the first and second story windows. The brick is laid in a running bond with the exception of the rows immediately above and below the terra cotta courses; these rows are composed of alternating stretcher and header bricks. The cornice is composed of a terra cotta beltcourse above which is a course of bricks in a basket weave pattern, a row of bricks in a dentil pattern, and terra-cotta coping on a shallow parapet wall. The building's flat roof rests on steel joists.

The main entry is centered on the front central block and features an elaborate Art Deco terra-cotta surround. The entry is accessed by a flight of concrete steps. In 1993, the steps were modified to incorporate a new concrete handicap ramp running from the center steps along the facade to the south corner. The terra cotta entry surround steps back to a recessed door, located between the basement and first floor levels. Above the double-leaf aluminum-framed glass doors and geometric-patterned transom is a course of terra cotta blocks with small, square recessed indentations. Above that, terra cotta blocks are carved with "SEDGWICK COUNTY COURTHOUSE." On the second floor a large window opening is topped by elaborate terra cotta tiles with stylized fern fronds, floriated patterns, and sunrises. The central block is framed by two pilasters. A horizontal band of stylized floral tiles runs along the top of the pilasters, just below the terra cotta coping. The pilasters are decorated with vertical terra cotta bands topped by foliated decorative panels. A similar vertical terra-cotta band topped by a foliated panel is centered on the entry section between the pilasters, running from the center window to the roof line. The decoration of the rear of the central block is much simpler. There are four brick pilasters, with a horizontal band of stylized floral tiles decorating the top of each pilaster.

On the front of the building, the wings have four window bays on each of the three levels. The central block has a large window flanked by narrow windows set within a vertical terra-cotta band. On the rear, each wing and the central block have three window bays per level, with the exception of the north side basement level that only has two windows. On the southwest side, there are five window openings and a door opening surrounded with terra cotta tiles on the basement level, six windows on the first floor, and

United States Department of the Interior
National Park Service
National Register of Historic Places
Continuation Sheet

Sedgwick County Courthouse
Sedgwick County, Colorado

Section number 7 Page 2

(New Deal Resources on Colorado's Eastern Plains MPS)

seven windows on the second floor. There are five smaller windows on the third floor of the central block. On the northeast side there are six windows on the basement, first, and second floor levels and five smaller window openings on the third floor. The windows on the southwest and northeast sides are arranged with sets of windows paired, interspersed with single windows. The original windows, steel-framed casements, have been replaced throughout the building. With the exception of four window openings filled with glass blocks on the northeast side (two on the basement level and two on the first floor), the original windows have been replaced with aluminum-framed windows, double glazed with imitation muntins installed in the space between the panes of glass. One window opening on the northeast side at the basement level, adjacent to the boiler room, has been filled with a vent and metal paneling. The aluminum-framed windows were installed in the mid-1990s; the date of the other modifications is unknown.

The interior spaces are configured in a linear plan, with offices, entry and stairwell lining a central double-loaded hallway. The main entrance opens to a stairway landing located between the basement and first floors. The first and second floor hallways and the stairwell have terrazzo floors and wainscoting. The terrazzo is salmon-colored with mauve borders; rectangular blocks of striped mauve and cream terrazzo decorate the hallway. The first and second floor offices have terrazzo and oak parquet floors, plaster walls, and acoustic tile ceilings framed by wood molding. No terrazzo decoration is used on the basement level, which has linoleum flooring in the hallway and offices.

The county extension offices, Julesburg Irrigation District offices, a meeting room, and storage are located in the basement. The offices of the county commissioners, clerk, assessor, and treasurer are located on the first floor. The courtroom is located on the northwest side of the second floor. It has oak parquet floors, wood wainscoting, and a paneled wood ceiling. The area around the judge's bench is covered with wood paneling (walnut flexwood) from floor to ceiling. The courtroom also features circular metal and glass pendant lights, suspended from the ceiling with four narrow metal rods. These are the only original light fixtures in the courthouse; the rest of the building is lit with modern fluorescent lights. The sheriff is located at the north end of the second floor and a stair within the sheriff's space leads up to the jail located on the third floor.

The **garage** is located northwest of the courthouse. This single-story, 24'x23' building has a gable roof covered with asphalt shingles. It has a rectangular plan and is constructed of buff brick laid in a running bond. An overhead garage door and a pedestrian door are located on the southwest side of the building; these are the only openings. These openings appear to be original, but the paneled overhead and pedestrian doors are more recent replacements. The garage is considered a contributing building since it was constructed between 1942 and 1953, during the courthouse's period of significance. The garage was not a New Deal project, but it is associated with the courthouse's significant role in the governing of Sedgwick County.

The **county annex building** is located west of the courthouse. This building is non-contributing since it was constructed in 2002, after the period of significance. This single-story, 64'x109' building has a shallow-pitched gable-on-hip roof covered with asphalt shingles. The annex is constructed of red brick laid in a running bond. The building is rectangular in plan with the exception of gable-roofed entrance vestibules located on the northeast and southwest sides of the building. Since the courthouse lies in the

United States Department of the Interior
National Park Service
National Register of Historic Places
Continuation Sheet

Sedgwick County Courthouse
Sedgwick County, Colorado

Section number 7 Page 3

(New Deal Resources on Colorado's Eastern Plains MPS)

center of a spacious block and the annex is located to the rear at the west corner of the lot, it has little visual impact on the courthouse.

Integrity

The Sedgwick County Courthouse has remarkable exterior and interior integrity. The only significant changes have been the replacement of the original windows in the mid-1990s and the addition of a handicap ramp in 1993. The original windows were metal-framed, multi-light casement windows. Since the replacement windows replicate the multi-pane look of the original windows, their replacement does not significantly alter the building's overall architectural character. These alterations do little to detract from the buildings' association with the New Deal. For the CWA and WPA programs, pre-manufactured elements such as windows and doors are not as critical to integrity since they do not directly relate to the program's purpose of providing local jobs.

On the interior, most offices continue to serve their original functions, many with their original signage and doors. The courtroom retains a very high degree of integrity. Office spaces have new furnishings. The need for additional space has been met through the construction of a separate annex building behind the courthouse rather than through modifications or additions to the existing building.

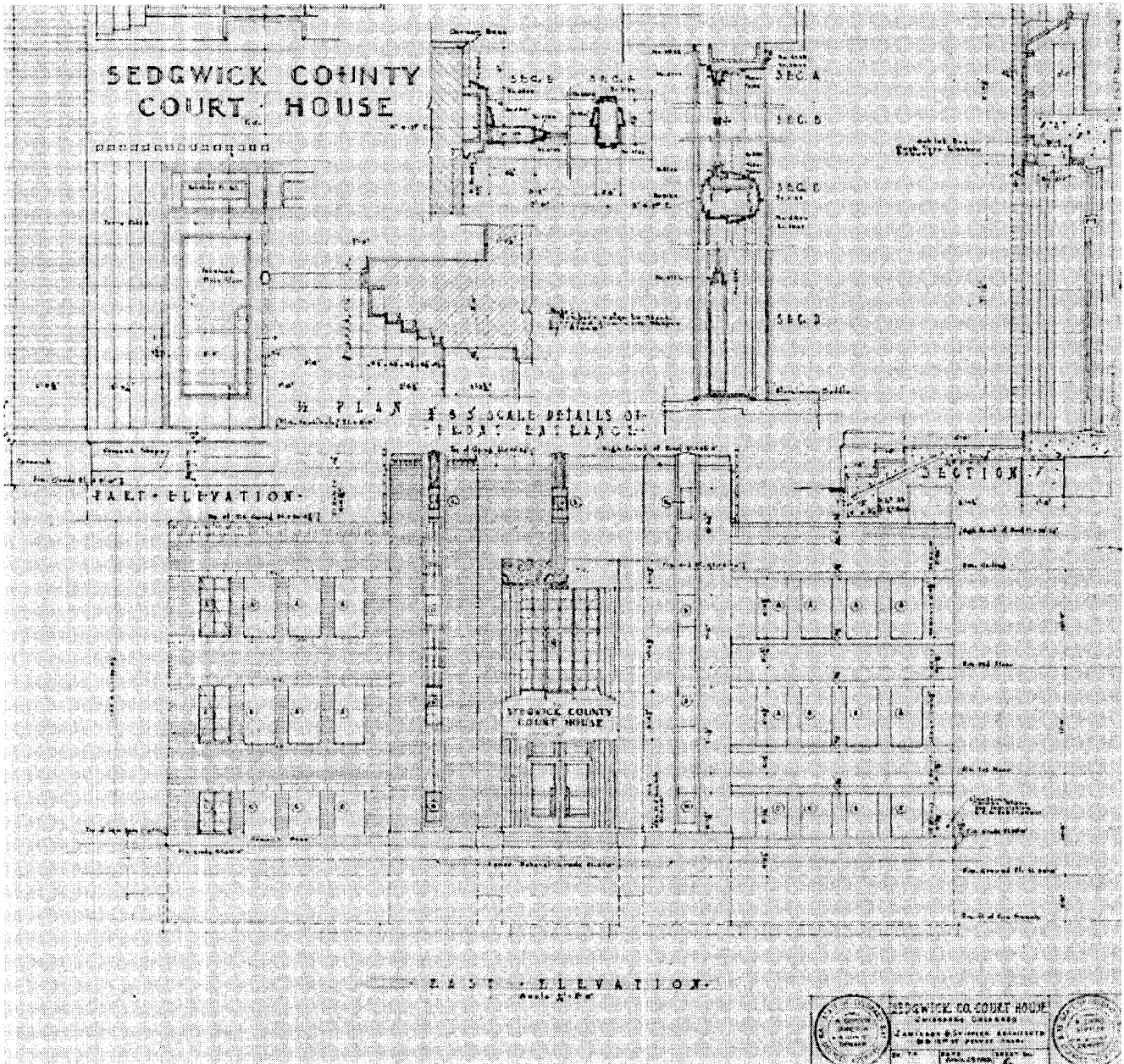
United States Department of the Interior
National Park Service
National Register of Historic Places
Continuation Sheet

Sedgwick County Courthouse
Sedgwick County, Colorado

Section number 7 Page 4

(New Deal Resources on Colorado's Eastern Plains MPS)

East Elevation



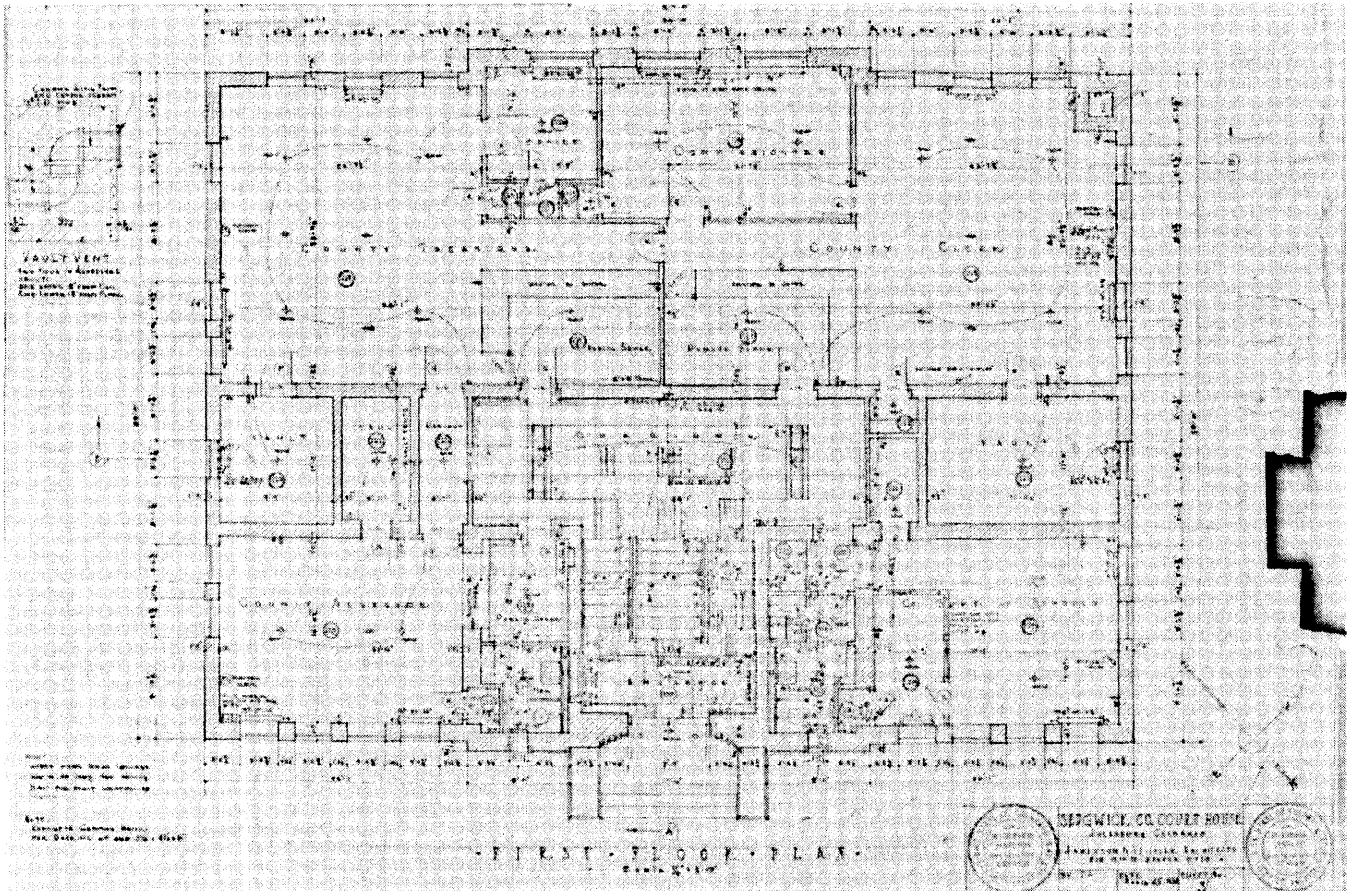
United States Department of the Interior
National Park Service
National Register of Historic Places
Continuation Sheet

Sedgwick County Courthouse
Sedgwick County, Colorado

Section number 7 Page 6

(New Deal Resources on Colorado's Eastern Plains MPS)

First Floor Plan



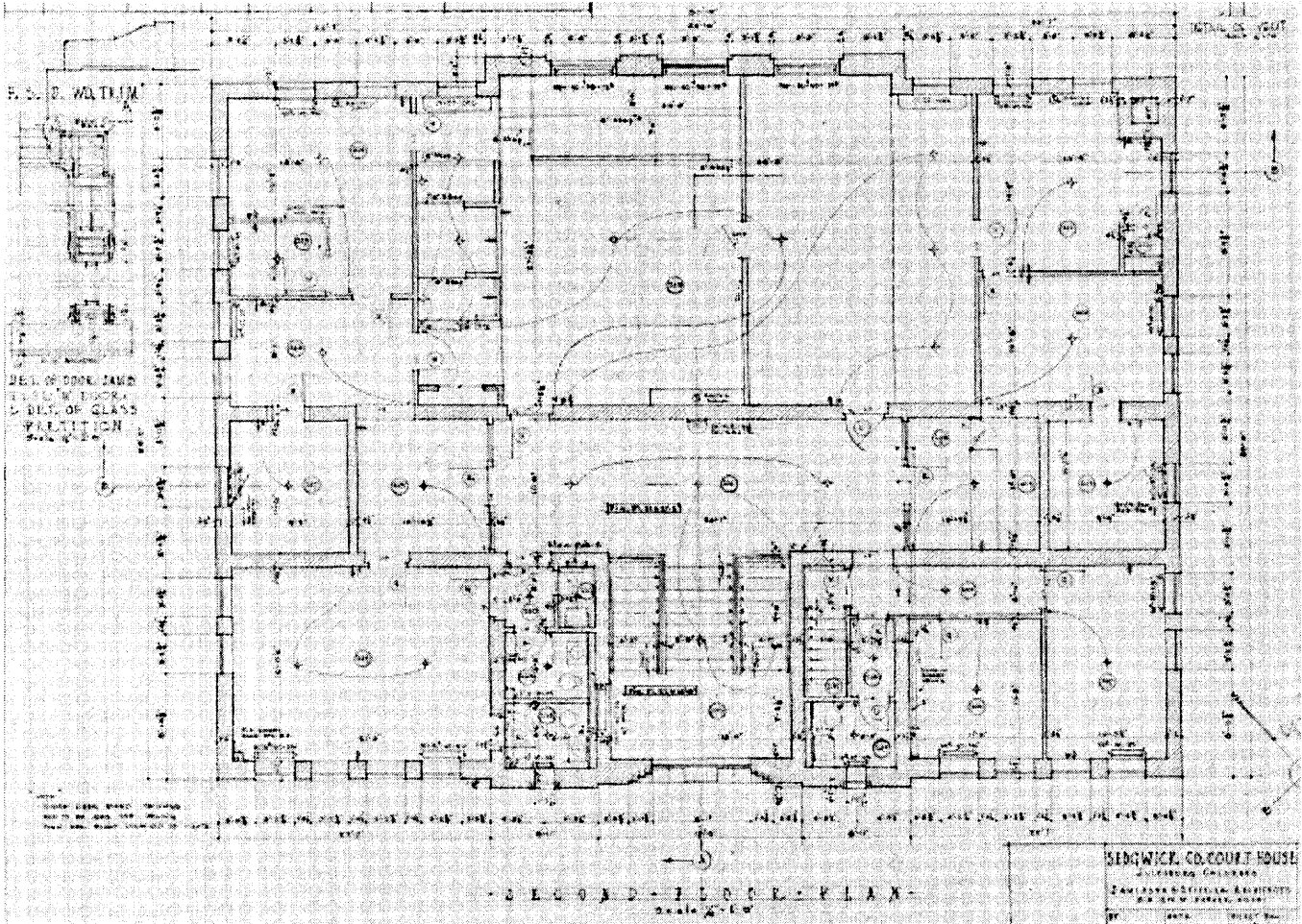
United States Department of the Interior
National Park Service
National Register of Historic Places
Continuation Sheet

Sedgwick County Courthouse
Sedgwick County, Colorado

Section number 7 Page 7

(New Deal Resources on Colorado's Eastern Plains MPS)

Second Floor Plan



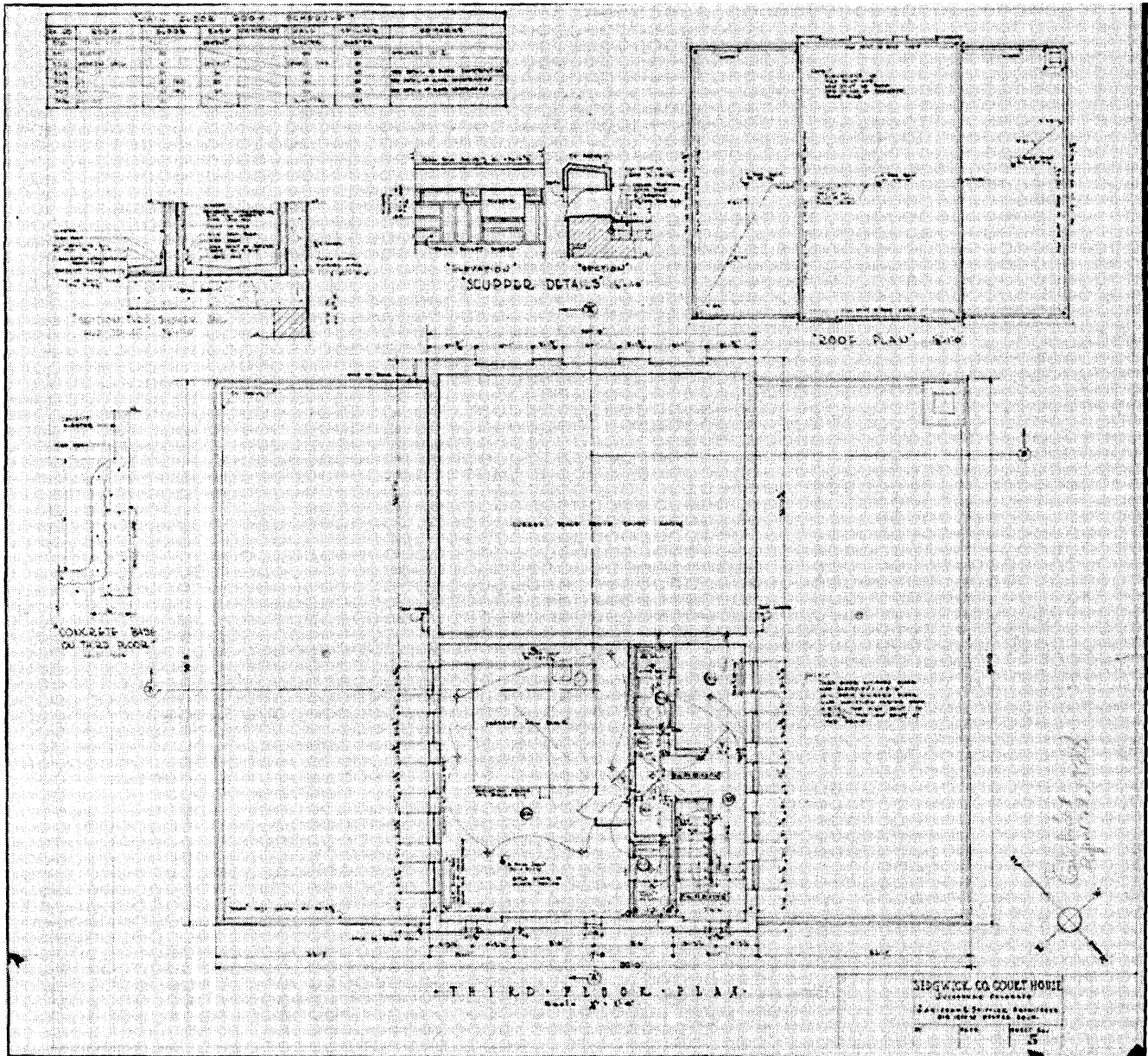
United States Department of the Interior
National Park Service
National Register of Historic Places
Continuation Sheet

Sedgwick County Courthouse
Sedgwick County, Colorado

Section number 7 Page 8

(New Deal Resources on Colorado's Eastern Plains MPS)

Third Floor Plan



United States Department of the Interior
National Park Service
National Register of Historic Places
Continuation Sheet

Sedgwick County Courthouse
Sedgwick County, Colorado

Section number 8 Page 9

(New Deal Resources on Colorado's Eastern Plains MPS)

SIGNIFICANCE

The Sedgwick County Courthouse, constructed between 1938 and 1939 under the Works Progress Administration (WPA), is being nominated under the *New Deal Resources on Colorado's Eastern Plains* Multiple Property Documentation Form (MPDF). The Sedgwick County Courthouse meets the registration requirements of a property type delineated in the MPDF—Civic and Government Resources (subtype Courthouses).

The Sedgwick County Courthouse meets Criterion A for its significance in the area of Social History for its association with the New Deal. Constructed by the WPA, the courthouse presents an important record of the federal relief programs administered in eastern Colorado during the Great Depression. Although all of Colorado was affected by the dire economic conditions of the 1930s, the agricultural-based economy of the Eastern Plains was especially hard hit due to the drought conditions that led to the Dust Bowl. The public works jobs helped families as well as communities survive during the Depression years, and provided an infrastructure that would not have otherwise been built. The courthouse is significant in the social history of the area as one of the largest relief projects in Sedgwick County, which providing much needed assistance by giving jobs to the unemployed of the county during the Great Depression.

The Sedgwick County Courthouse also meets Criterion A for its significance in the area of Politics and Government. The building has been essential to the governing of Sedgwick County, serving continuously as the courthouse and jail from its completion in 1939 to the present. Governmental buildings were popular New Deal projects. Several Colorado counties have courthouses or courthouse annexes constructed as New Deal projects. There were also many town halls or other municipal buildings constructed. Many counties and municipalities were in need of new facilities that they could not fund alone and the New Deal programs provided an ideal opportunity to get government assistance for new construction. In the midst of the Depression, the Sedgwick County Commissioners took advantage of the WPA to match county funds toward the construction of a new courthouse to replace the 1904 courthouse building.

The Sedgwick County Courthouse meets Criterion C for its architectural significance as an example of WPA Art Deco. It is an excellent example of the Art Deco style as applied to a government building whose construction was constrained by the economic conditions of the Depression. Designed by the Denver architecture firm, Jamieson and Stiffler, the building features characteristics of the style as evident by its vertical orientation, stepped facade and stylized geometric and floral patterns expressed on terra cotta tiles. However, the detailing is restrained, reflecting the dignity of the building's public function. Also, overly elaborate decoration would imply imprudently used government funds in the midst of Depression.

The period of significance begins in 1938 with the start of construction of the courthouse as a WPA project and ends in 1956. Though the Sedgwick County Courthouse remain in active use and continues to be vital to the governance of Sedgwick County, the period of significance ends in 1956 in order to comply with the National Register's fifty year rule. The significant dates of 1938 and 1939 are the years in which construction began and the building was completed.

United States Department of the Interior
National Park Service
National Register of Historic Places
Continuation Sheet

Sedgwick County Courthouse
Sedgwick County, Colorado

Section number 8 Page 10

(New Deal Resources on Colorado's Eastern Plains MPS)

Historical Background

The northeastern corner of the state was part of Logan County until Sedgwick County was formed in 1889. The new county had three towns: Julesburg, Ovid and Sedgwick. Julesburg was chosen as the county seat. County offices and court were held in several buildings before the county's first purpose-built courthouse was constructed in 1904 on the city block bounded by Cedar Street, 3rd Street, Pine Street, and 4th Street. The jail was located in the basement. With rapid growth during the next few decades, Sedgwick County quickly outgrew its first courthouse. In 1900, Sedgwick County had a population of just 971. By 1910 the population had grown to 3,061. There were 4,207 residents in 1920 and 5,580 residents by 1930.

Sedgwick County's application for a New Deal courthouse project showed a desire to find any available means to improve the county and its capital. During the 1930s, the *Julesburg Grit-Advocate* was a strong booster of the local community. The Julesburg Chamber of Commerce also ran advertisements in the paper advocating "neighborliness, thrift, pride in our homes, our business, our public improvements and ourselves" as necessary to progress and prosperity.

Courthouses and other municipal buildings were popular New Deal projects. The Sedgwick County Commissioners decision to seek federal aid for a new courthouse seems to have been influenced by seeing the new courthouses constructed in nearby Phillips (1935) and Morgan Counties (1936). The *Julesburg Grit-Advocate* reported in May 1936 that "following in the wake of numerous other counties which have taken advantage of federal aid to build new structures," the Sedgwick County Commissioners have applied for funds to construct a new courthouse. A drawing of the proposed structure, "showing a modernistic design such as adopted by several other Colorado counties," was placed on display in the county clerk's office. In addition to getting a share of the federal funds being given to other counties, local officials also wanted to "provide work for the county's unemployed and... obtain a much-needed structure for a steadily-growing community." The original proposal submitted to the WPA called for a \$25,000 courthouse and included a request for funds to demolish the existing courthouse. The commissioners were optimistic about their proposal being approved. Wrote the *Julesburg Grit-Advocate*: "Allowances made by the Works Progress Administration are the most liberal of any government relief agency since the birth of such federal organizations and taking this fact into consideration and the knowledge that the county badly needs a new courthouse, officials believe that the project should be put through immediately."

A courthouse project, including the construction of 190,000 "cement cinder bricks", was approved November 7, 1936. Under this proposal the WPA would provide all unskilled and intermediate labor, and the county would pay for the skilled labor. The WPA covered the cost of construction superintendence. Material costs were split between the WPA and the county with the WPA contributing \$4,162 for materials and the county providing \$16,211. The total project cost was \$43,022 with \$23,448 of that in WPA funds. However, more funds were needed as the scope and cost of the project increased. On September 10, 1938 another WPA application was made requesting additional funds to complete the project, including funds for landscaping and demolition of the old courthouse. The WPA contributed an additional \$27,304 under this application.

United States Department of the Interior
National Park Service
National Register of Historic Places
Continuation Sheet

Sedgwick County Courthouse
Sedgwick County, Colorado

Section number 8 Page 11

(New Deal Resources on Colorado's Eastern Plains MPS)

The county chose Jamieson & Stiffler of Denver as the project architects. Jamieson & Stiffler were a relatively new architectural practice, formed in 1931. Both architects had formerly worked for Eugene Groves, who designed the Phillips County Courthouse. W. Gordon Jamieson was born in 1894 and emigrated from Scotland to the United States with his parents in 1904. He received his architectural training at the Rhode Island Institute of Design and the Beaux Arts Institute of Design. Jamieson moved to Denver in 1919 and worked as a draftsman for various architectural and engineering firms till he got his Colorado license in 1926. He then went to work as an associate architect with Eugene Groves, known for concrete homes, public and educational buildings. He worked for Groves till 1931. R. Ewing Stiffler was born in 1888 in Cooper County, Missouri and studied at Colorado State College in Greeley. He got his license in 1925 and was associated with Groves by 1930.

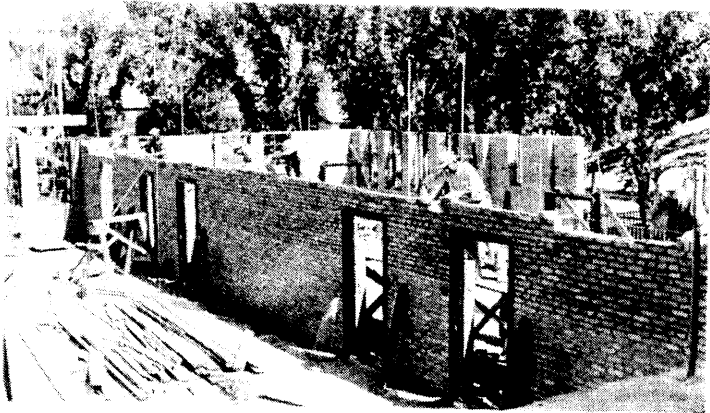
W. Gordon Jamieson presented his plans for the new courthouse to the Julesburg Chamber of Commerce and county commissioners in January 1938. At the meeting, it was proposed that the courthouse would be constructed of "home-made bricks, manufactured in Sedgwick County of ash, cement and sand" if



final studies determine it to be "absolutely durable." These appear to be the same "cement cinder bricks" referred to in the WPA proposal. It is unclear exactly what type of brick this refers to since this is not common terminology. Cement is a finely pulverized mixture of clay and limestone used as an ingredient in concrete. Cinder is another term for slag, the vitrified ash left as a residue from the smelting of metallic ore. So the WPA proposal seems to be referring to slag brick, which is a concrete brick made from slag and lime. The fact that the bricks used in the construction were hand-made is characteristic of WPA projects, which aimed to spend as much of the project budget as possible on labor and as little as possible on

materials. WPA projects often utilized labor-intensive but materially inexpensive materials such as locally-quarried stone or adobe.

According to local press coverage, the drawings show that "Sedgwick will have one of the finest, up-to-date, courthouses in Colorado." When planning for the new courthouse, the county commissioners made trips to study other new courthouse structures, wanting to ensure that Sedgwick got the best possible courthouse for their money. At this point the commissioners then estimated the cost of the courthouse at around \$80,000, a substantial increase from the original \$25,000 estimate of 1936. A courthouse levy fund started the year before had raised \$11,550 by January 1938. The county anticipated an additional levy to raise \$7,208.



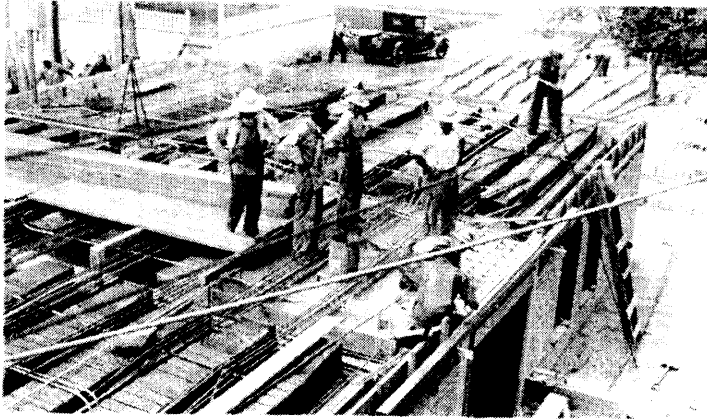
United States Department of the Interior
National Park Service
National Register of Historic Places
Continuation Sheet

Sedgwick County Courthouse
Sedgwick County, Colorado

Section number 8 Page 12

(New Deal Resources on Colorado's Eastern Plains MPS)

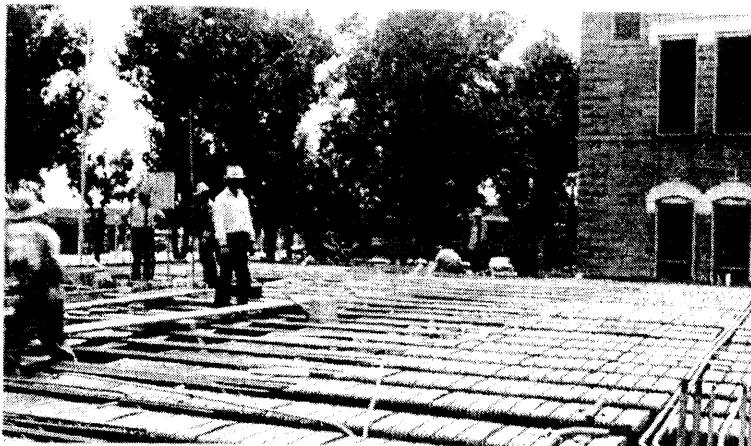
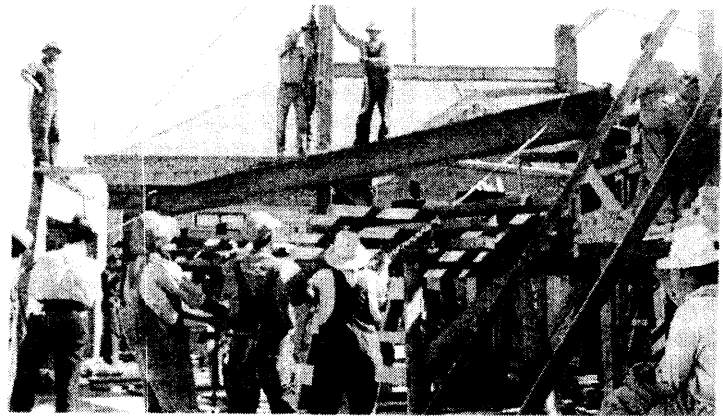
Excavation of the courthouse basement began in early February 1938. Trucks also began hauling in the homemade brick to be used in construction. The construction of the walls began in June 1938 with the laying of the cornerstone. WPA labor was used for the unskilled construction jobs on the courthouse.



Skilled labor was bid out to contractors. C.W. Jones of Denver was awarded the brick-laying contract for \$3,540. George Zeiler of Holyoke was given the contract for electrical work for \$2,185. The plumbing and heating contract went to City Plumbing and Heating Co. of Boulder for \$7,500. No bids were received from firms or individuals from Sedgwick County.

The new courthouse generated a great deal of community excitement and pride. Soon after construction began the *Julesburg Grit-Advocate* reported that local people "are so pleased with the forward progress on the new building that they care little at having their homeward route through the park made almost impassable."

A ceremony for the laying of the courthouse cornerstone was held on a Saturday evening, June 11, 1938. The Masonic Lodge organized the program which included a performance by the Julesburg Band; an address by the County Commissioners; a Masonic ceremony; and an address by Hazlett P. Burke, Colorado State Supreme Court Justice. Masons from Holyoke, Chappell, and North Platte also came to participate in the ceremony.



According to the *Julesburg Grit-Advocate*, the cornerstone laying was a "splendid entertainment." Within the stone were placed a copy of the Bible, a list of members of the Masonic Lodge, names of the county officials, names of the contractor, architect, and workers, and newspaper articles about the new courthouse along with an account of the completion of the previous courthouse in 1904. Wrote one observer:

United States Department of the Interior
National Park Service
National Register of Historic Places
Continuation Sheet

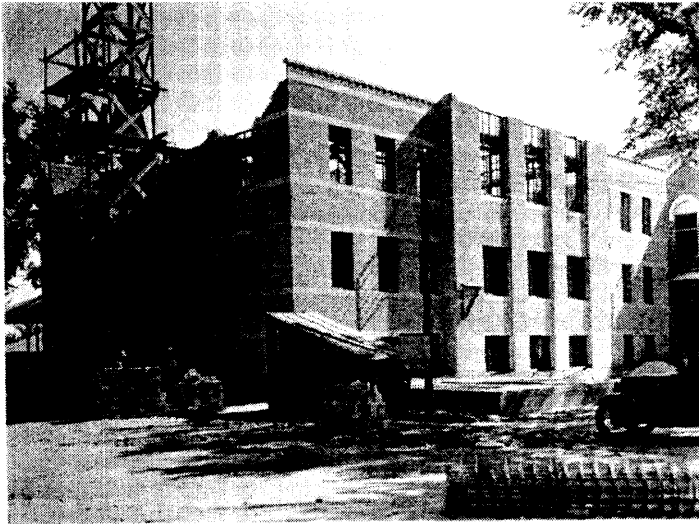
Sedgwick County Courthouse
Sedgwick County, Colorado

Section number 8 Page 13

(New Deal Resources on Colorado's Eastern Plains MPS)

The ceremonies as conducted by the Masonic fraternity are always impressive and upon this occasion they were exceptionally so. Grand Master Killan is a man of fine appearance and in the routine work of the ceremony and in the address he delivered afterward, he acquitted himself in an admirable manner. Mr. Todd who upon this occasion acted as Grand Marshal was also at his best and . . . left nothing lacking to make this an auspicious occasion in the history of Sedgwick County (Archives, Fort Sedgwick Historical Society).

The ceremony drew a huge crowd that was "unusually attentive." The *Julesburg Grit-Advocate* reported: "The people of the territory realized the importance and unusual aspect of the occasion. Seldom do they have an opportunity to be present when the cornerstone of a courthouse is laid, an \$85,000 structure which will mean a big step forward in the progress of Sedgwick County."



In November 1938 Sedgwick County voters approved the county's issuing of \$35,000 in bonds to enable the speedy completion of the courthouse. The plastering of the courthouse was begun in December 1938. In May 1939 the *Julesburg Grit-Advocate* reported that the courthouse interior was "taking on magnificence for which the county may well be proud." The opening date was tentatively set for early August. However, the furniture caused a brief delay. It did not arrive until late September, forcing the opening to be rescheduled for October.

The formal courthouse dedication was held on the morning of October 21, 1939. The Julesburg Band paraded through town and then gave a half hour concert in front of the new building. Those attending the ceremony included Lieutenant Governor John Vivian, Secretary of State George Saunders, architect R. Ewing Stiffler, and State WPA Administrator Paul Shriver.

It was an occasion for many speeches, and though it was a joyous occasion, the shadow of the war of Europe was evident in the comments. Local chairman L.J. Bennett praised the WPA, stating that though its usefulness may have been questioned in the past, its fine work was now recognized everywhere. He also favorably compared the United States to Europe. Here, the unemployed were building projects like the library, courthouse, and sewers constructed in Julesburg unlike the "instruments of destruction" men were being put to work making in Europe.

Paul Shriver addressed the crowd next, including some slightly odd praise of WPA workers: "WPA workers do not have it too easy. These workers do not know what will happen to them, one day to the next. Nevertheless, WPA workers do not gather in basements plotting the overthrow of the government, they have faith and they go forward with their chins up!" Shriver then formally presented the building to the county. County Commissioner G.N. Austin accepted the building and then presented it to the people, stating that "The creed of this board of commissioners has been that 'nothing is too good for the people

United States Department of the Interior
National Park Service
National Register of Historic Places
Continuation Sheet

Sedgwick County Courthouse
Sedgwick County, Colorado

Section number 8 Page 14

(New Deal Resources on Colorado's Eastern Plains MPS)

of Sedgwick County.' This has been the background of our thoughts and all our work in connection with the building of this courthouse."

The dedication ceremony was followed by a free chuck wagon lunch and an afternoon celebration of Sedgwick County's 50th Anniversary. This began with a parade of school children, school bands, and the American Legion Drum and Bugle Corps. Attending the ceremony were around 180 residents who had lived in the area since the county was formed in 1889. State Representative Joe Jankovsky introduced all the Sedgwick county pioneers. That evening was a free Old Time Dance with prizes for best square dancers and oldest costumes.



The first court was held in the new building on April 17, 1940. The Honorable Arlington Taylor, District Judge opened with these comments:

I am sure it is quite a pleasure for the jurors who are called for service to have the honor (I consider it) of being the first panel to serve in this beautiful courtroom. You folks ought to be proud of your Court House, and no doubt you are. This is a beautiful court room: the acoustic properties seem to be excellent. I am sure we ought to all join very heartily with your Board of County Commissioners, and all of the officials in the Court House, to keep it as clean and bright, and beautiful as it is today. I hope that you will save this building, and I know there will be every effort extended to do so. It is a lovely place. I should like to be district judge for a hundred years and hold court in this particular room a hundred years more (Archives, Fort Sedgwick Historical Society).

United States Department of the Interior
National Park Service
National Register of Historic Places
Continuation Sheet

Sedgwick County Courthouse
Sedgwick County, Colorado

Section number 9 Page 15

(New Deal Resources on Colorado's Eastern Plains MPS)

BIBLIOGRAPHY

“Bond Issue Voted With 261 Majority; Amendments Lose.” *Julesburg Grit-Advocate*, 10 November 1938.

“County Building Asked of WPA.” *Julesburg Grit-Advocate*, 7 May 1936.

“County Structure Beautiful Building and Credit to Area.” *Julesburg Grit-Advocate*, 20 July 1939.

“Courthouse Plans Shown at Meeting.” *Julesburg Grit-Advocate*, 6 January 1938.

“Courthouse Work Proceeds Rapidly; Dedication is Near.” *Julesburg Grit-Advocate*, 8 June 1939.

“Hazlett P. Burke Presides Saturday at Program Here. Cornerstone For New Courthouse Laid in Impressive Rites.” *Julesburg Grit-Advocate*, 16 June 1938.

Julesburg Grit-Advocate, 15 November 1934.

Julesburg Grit-Advocate, 25 October 1934.

Julesburg Grit-Advocate, 26 May 1938.

“Masonic Lodge Notable will be here for ritual at site of new structure.” *Julesburg Grit-Advocate*, 2 June 1938.

“New Furniture to Arrive Soon.” *Julesburg Grit-Advocate*, 14 September 1939.

“Plastering Is Begun on New Courthouse.” *Julesburg Grit-Advocate*, 29 December 1938.

“Program Outline for Big Time Here on Dedication Day.” *Julesburg Grit-Advocate*, 12 October 1939.

“Progress Made on Courthouse.” *Julesburg Grit-Advocate*, 10 February 1938.

“Thousands Expected Here Saturday for Dedication for New Courthouse and Celebration of 50th Anniversary.” *Julesburg Grit-Advocate*, 19 October 1939.

Wolfenbarger, Deon. “Drought, Depression, and Dust: The New Deal in Eastern Colorado Phase 1 Survey Report,” September 23, 2005. On file in the Office of Archaeology and Historic Preservation, Colorado Historical Society, Denver, Colorado.

----- “New Deal Resources on Colorado’s Eastern Plains” National Register Multiple Property Documentation Form, 2005. On file in the Office of Archaeology and Historic Preservation, Colorado Historical Society, Denver, Colorado.

“Work Continues on Courthouse.” *Julesburg Grit-Advocate*, 25 May 1939.

United States Department of the Interior
National Park Service
National Register of Historic Places
Continuation Sheet

Sedgwick County Courthouse
Sedgwick County, Colorado

Section number 9 Page 16

(New Deal Resources on Colorado's Eastern Plains MPS)

Archives:

Fort Sedgwick Historical Society

National Archives and Records Administration, Maryland

United States Department of the Interior
National Park Service
National Register of Historic Places
Continuation Sheet

Sedgwick County Courthouse
Sedgwick County, Colorado

Section number 10 Page 17

(New Deal Resources on Colorado's Eastern Plains MPS)

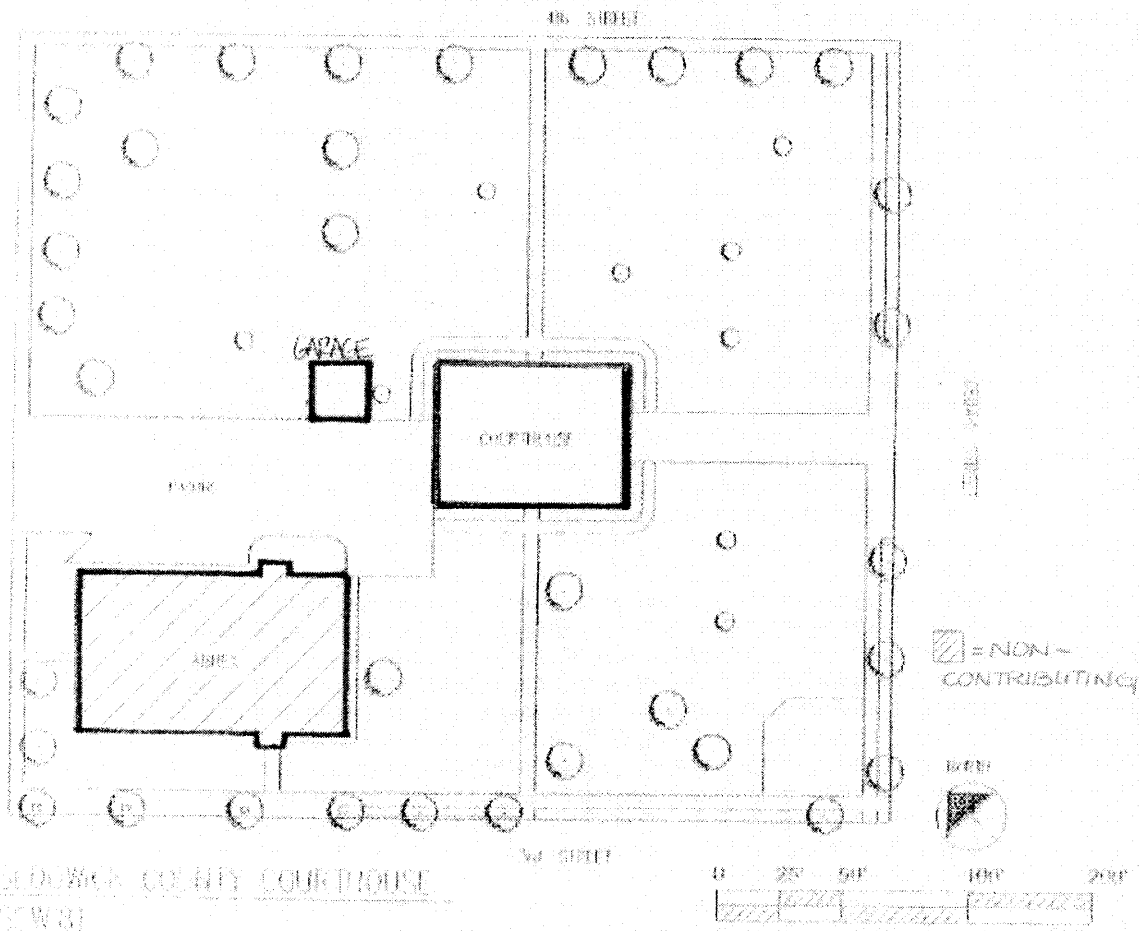
GEOGRAPHICAL DATA

VERBAL BOUNDARY DESCRIPTION

All of Block 31, Union Pacific First Addition, Town of Julesburg

BOUNDARY JUSTIFICATION

The nominated property includes the entire parcel of land historically associated with the courthouse.



United States Department of the Interior
National Park Service
National Register of Historic Places
Continuation Sheet

Sedgwick County Courthouse
Sedgwick County, Colorado

Section number ___ Page 18

(New Deal Resources of Colorado's Eastern Plains)

PHOTOGRAPH LOG

The following information pertains to all photographs:

Name of Property: Sedgwick County Courthouse
Location: Julesburg, Sedgwick County, Colorado
Photographer: Abigail Christman
Date of Photographs: 13 March 2006
Negatives: Digital files submitted to National Register, Washington, D.C.
(Printed on HP Premium photo paper with Hewlett-Packard 100 gray photo cartridge)

Photo No.	Photographic Information
1	South corner of courthouse. Facing north.
2	Front (southeast side) of courthouse. Facing northwest.
3	Detail of terra cotta at entrance. Facing northwest.
4	East corner of courthouse. Facing west.
5	Northeast side of courthouse. Facing southwest.
6	Rear (northwest side) of courthouse. Facing southeast.
7	Southwest side of courthouse. Facing north
8	Courthouse block, showing courthouse, garage, and annex. Facing south.
9	Interior, stairs.
10	Interior, first floor hallway showing terrazzo floors and wainscoting.
11	Interior, view from landing between first and second floors.
12	Interior, second floor.
13	Interior, courtroom.
14	Interior, courtroom.
15	Interior, detail of lighting in courtroom.
16	Southwest side of garage. Facing northeast

United States Department of the Interior
National Park Service
National Register of Historic Places
Continuation Sheet

Sedgwick County Courthouse
Sedgwick County, Colorado

Section number ___ Page 19

(New Deal Resources of Colorado's Eastern Plains)

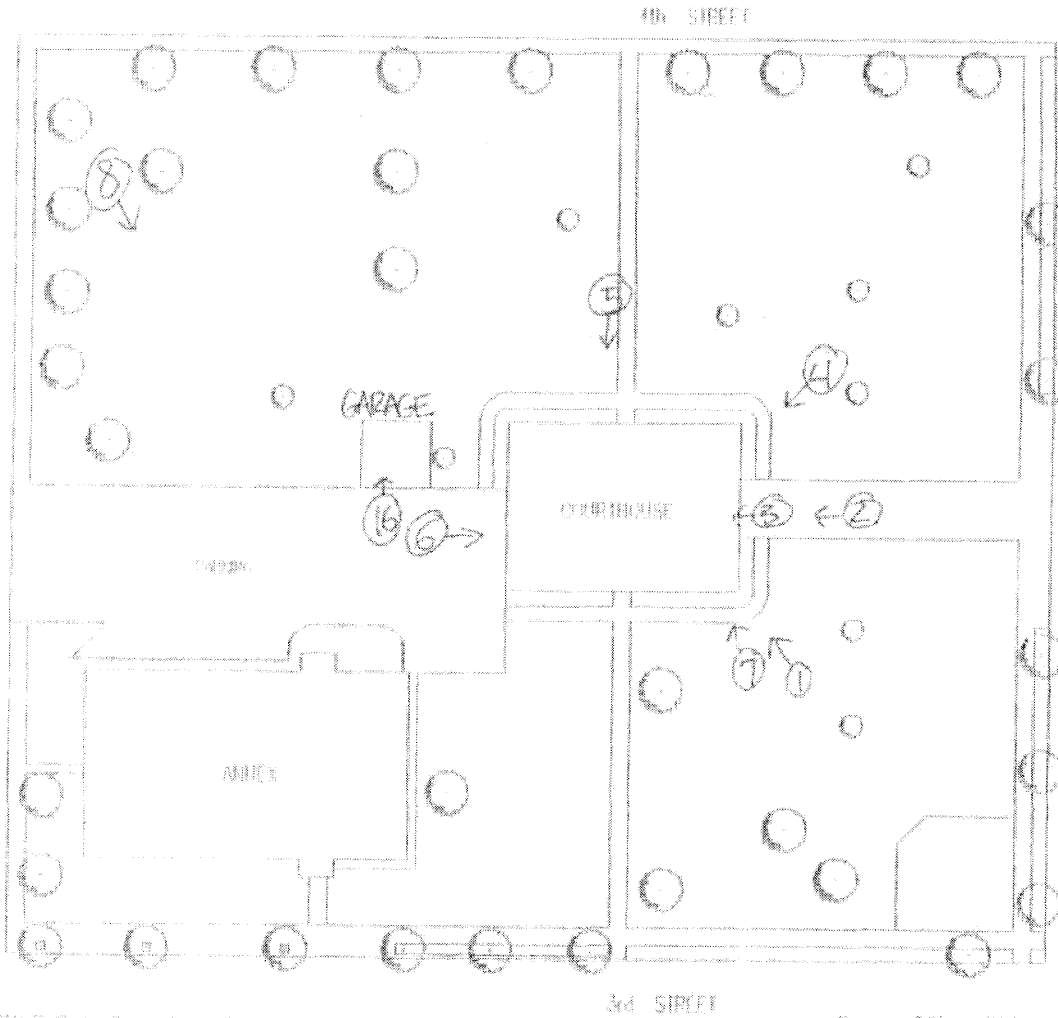


photo
key

Arrow indicates
direction
facing

SEDGWICK COUNTY COURTHOUSE
55W.31



United States Department of the Interior
National Park Service
National Register of Historic Places
Continuation Sheet

Sedgwick County Courthouse
Sedgwick County, Colorado

Section number Page 20

(New Deal Resources of Colorado's Eastern Plains)

USGS TOPOGRAPHIC MAP
Julesburg Quadrangle, Colorado
7.5 Minute Series

UTM: Zone 13 / 730130mE / 4540850mN (NAD27)
PLSS: 6th PM, T12N, R44W, Sec. 28, E NW SW
Elevation: 3475 feet

