



112 14th St. NW Intrusive structure  
Fourth Ward Historic District  
Albuquerque, New Mexico

DEC 1 1980

Christopher Wilson, 1979  
Albuquerque Historic Landmarks Survey

OCT 20 1980



Albuquerque Downtown Neighborhoods Multiple Resource Area/Bernalillo Co.

Kate Nichols Chavez House, 501 11th St. NW

(17)

Fourth Ward Historic District

Albuquerque, New Mexico

Christopher Wilson, 1978.

Albuquerque Historic Landmarks Survey

BB

DEC 1 1980

OCT 20 1980



401 14th St. NW Intrusive structure.  
Fourth Ward Historic District  
Albuquerque, New Mexico

DEC 1 1980

Christopher Wilson, 1979  
Albuquerque Historic Landmarks Survey

OCT 20 1980

Albuquerque Downtown Neighborhoods Multiple Resource Area/Bernalillo Co.



Thomas F. Keleher, Jr. House, 312 Keleher NW  
(2).  
Fourth Ward Historic District  
Albuquerque, New Mexico

Christopher Wilson, 1979  
Albuquerque Historic Landmarks Survey

OCT 20 1981

Albuquerque Downtown Neighborhoods Multiple Resource Area/Bernalillo Co.





18  
J. J. Wegs House, 323 14th St. NW (38)  
Fourth Ward Historic District  
Albuquerque, New Mexico

Christopher Wilson, 1979  
Albuquerque Historic Landmarks Survey

DEC 1 1980

OCT 20 1980

WM

Albuquerque Downtown Neighborhoods Multiple Resource Area/Bernalillo Co.



Albuquerque Downtown Neighborhoods Multiple Resource Area/Bernalillo Co.

*NM.*

Grunsfeld/Hubbell House, 909 Copper NW (6).  
Fourth Ward Historic District, Albuquerque,  
New Mexico.

Denise Cummings, 1978. Albuquerque Historic  
Landmarks Survey.

1980

DEC 1

1980

*J*



Albuquerque Downtown Neighborhoods Multiple Resource Area/Bernalillo Co.

Street view: 300 block, 12th St. NW, west  
side. Fourth Ward Historic District,  
Albuquerque, New Mexico.

Christopher Wilson, 1979. Albuquerque  
Historic Landmarks Survey.

DEC 1 1980

OCT 20 1980



Berthold Spitz House, 323 10th St. NW (12)  
Fourth Ward Historic District  
Albuquerque, New Mexico

Timothy Sheehan, 1974.  
Albuquerque Historic Landmarks Survey

DEC 1 1980

OCT 20 1980

Albuquerque Downtown Neighborhoods Multiple Resource Area/Bernalillo Co.





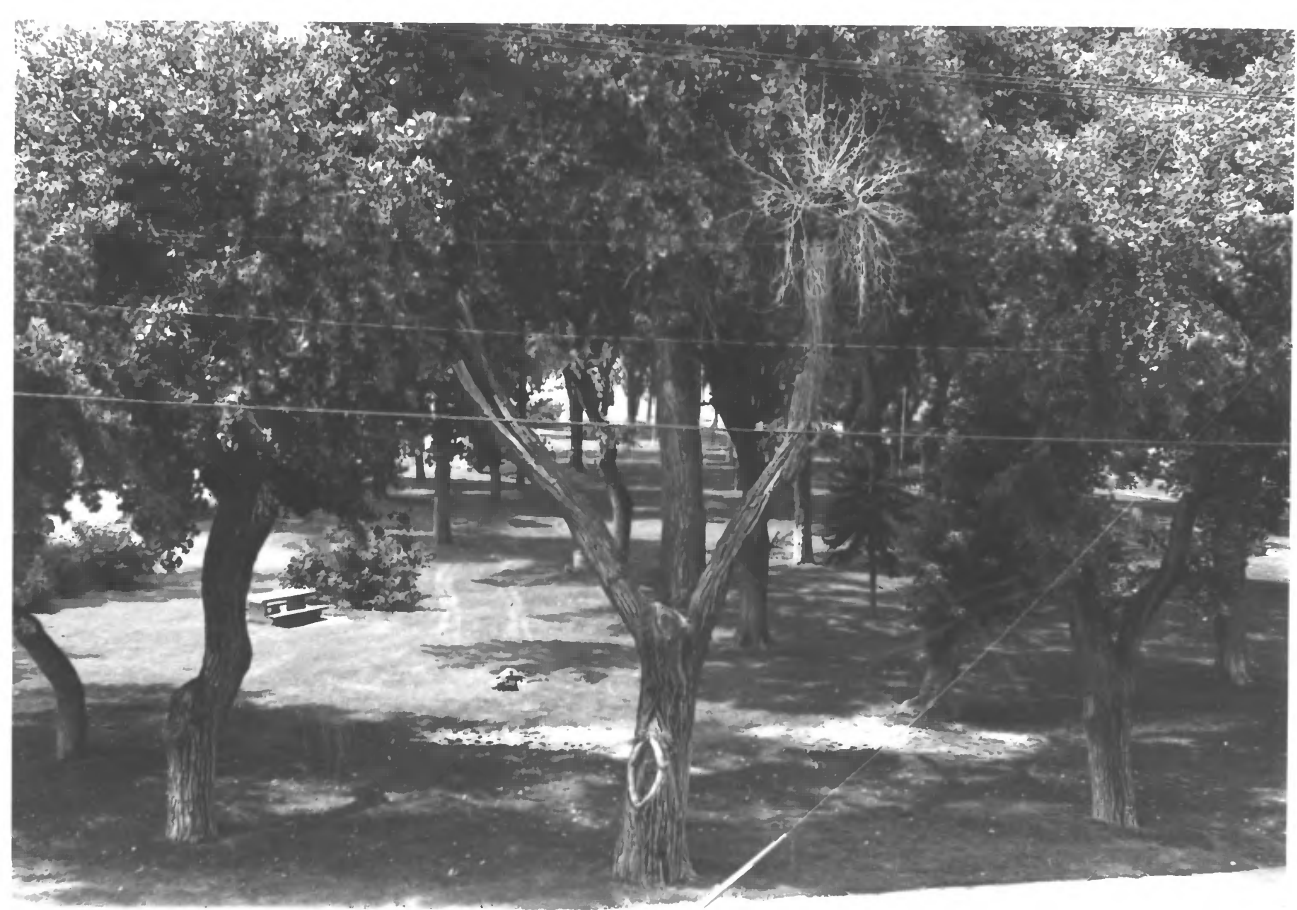
Street view: 400 block 10th St. NW, east  
side; Whitmer/~~Mac~~Kinnon House (13) at left.  
Fourth Ward Historic District, Albuquerque,  
New Mexico.

Christopher Wilson, 1978. Albuquerque  
Historic Landmark Survey.

DEC 1 1980

Albuquerque Downtown Neighborhoods Multiple Resource Area/Bernalillo Co.

OCT 20 1980



ROBINSON PARK

Robinson Park, 8th & Central N.W., looking west. Fourth Ward Historic District, (#7) Albuquerque, New Mexico.

Kathleen Brooker, 1979. Albuquerque Historic Landmarks Survey.

DEC 1 1980

OCT 20 1980

Albuquerque Downtown Neighborhoods Mult. Resource Area/Bernalillo Co.



Whitmer/MacKinnon House, 504 Luna NW (12)  
Fourth Ward Historic District  
Albuquerque, New Mexico

Christopher Wilson, 1979  
Albuquerque Historic Landmarks Survey

DEC 1 1980 OCT 20 1980

Albuquerque Downtown Neighborhoods Multiple Resource Area/Bernalillo Co

8 12 3



1121-23 KENT NW

1121-23 Kent NW, looking east.

Fourth Ward Historic District

Albuquerque, New Mexico

DEC 1 1980

Intrusive structure. Amado Chavez house (12)  
at right — 1109 Kent

OCT 29 1980

Christopher Wilson, 1979

Albuquerque Historic Landmarks Survey

Albuquerque Downtown Neighborhoods Multiple Resource Area/Bernalillo Co.





J. H. Coons House, 215 12th St. NW (24)  
Fourth Ward Historic District  
Albuquerque, New Mexico

Christopher Wilson, 1978  
Albuquerque Historic Landmarks Survey

OCT 20 1980

DEC 1 1980

Albuquerque Downtown Neighborhoods Multiple Resource Area/Bernalillo Co.



Street view: 400 block 11th St. NW, west side. Fourth Ward Historic Historic, Albuquerque, New Mexico.

DEC 1 1980

Christopher Wilson, 1979. Albuquerque Historic Landmarks Survey.

*Harry Owens House (14), 2nd from right.*

OCT 20 1980

Albuquerque Downtown Neighborhoods Multiple Resource Area/Bernalillo Co.



C. H. Conner House, 400 12th St. NW (27)  
Fourth Ward Historic District  
Albuquerque, New Mexico

Christopher Wilson, 1978  
Albuquerque Historic Landmarks Survey

OCT 20 1980



Albuquerque Downtown Neighborhoods Multiple Resource Area/Bernalillo Co.

Hesselden House, 1211-1215 Roma NW (29)  
Fourth Ward Historic District  
Albuquerque, New Mexico

Mary Davis, 1980.  
Albuquerque Historic Landmarks Survey

DEC 1 1980

OCT 20 1980





Albuquerque Downtown Neighborhoods Multiple Resource Area/Bernalillo Co.

Milton Helnick House, 1215 Fruit NW (30)  
Fourth Ward Historic District  
Albuquerque, New Mexico

Christopher Wilson, 1979  
Albuquerque, Historic Landmarks Survey

DEC 1 1980

OCT 20 1980



Charles Eller House, 217 13th St. NW (32)  
Fourth Ward Historic District  
Albuquerque, New Mexico

Christopher Wilson, 1979  
Albuquerque Historic Landmarks Survey

DEC 1 1980 OCT 20 1980



317 14th St. NW (37)  
Fourth Ward Historic District  
Albuquerque, New Mexico

Christopher Wilson, 1979  
Albuquerque Historic Landmarks Survey

DEC 1

1980

OCT 20 1980

Albuquerque Downtown Neighborhoods Multiple Res. Area/Bernalillo Co.



T. R. Esthelman House, 1305 Fruit NW (35)  
Fourth Ward Historic District  
Albuquerque, New Mexico

Christopher Wilson, 1979  
Albuquerque, Historic Landmarks Survey

OCT 20 1980

DEC 1 1980

Albuquerque Downtown Neighborhoods Multiple Resource Area/Bernalillo Co.





Albuquerque Downtown Neighborhoods Multiple Resource Area/Bernalillo Co.

Bond/Lovelace House, 201 12th St. NW (22)  
Fourth Ward Historic District  
Albuquerque, New Mexico

Richard Khanlian, 1975  
Albuquerque Historic Landmarks Survey

190/30  
OCT 20 1980

A black and white photograph of a single-story house with a gabled roof and a brick chimney. The house is partially obscured by large trees and dense bushes. In the foreground, a sidewalk leads to a street corner. A sign on a metal post stands on the sidewalk. The sky is overcast with clouds.

NO  
PARKING  
ANY  
TIME

Albuquerque Downtown Neighborhoods Multiple Resource Area/Bernalillo Co.

McClughan House, 815 Marquette N.W. (9)  
Fourth Ward Historic District  
Albuquerque, New Mexico

Christopher Wilson  
1979

Historic Landmarks Survey of Albuquerque

DEC 1  
1980

OCT 2 0 1980