



PROPERTY NAME : Thumond Historic District  
LOCATION : Thumond, Fayette County, West Virginia

PHOTO CREDIT : R. Eugene Harper

DATE OF PHOTO : August, 1983

NEGATIVE FILED AT : DEPT. OF CULTURE & HISTORY,  
'HISTORIC PRESERVATION UNIT, THE CULTRAL' CENTER,  
CAPITOL COMPLEX, CHARLESTON, W.VA. 25305

DESCRIPTION OF PHOTO :

Front elevation of main business district and  
railroad yards, all structures pivotal to

DIRECTION OF PHOTO : district.  
East

\* 1 of 15





PROPERTY NAME : Thurmond Historic District  
LOCATION : Thurmond, Fayette County, West Virginia

PHOTO CREDIT : R. Eugene Harper

DATE OF PHOTO : August, 1983

NEGATIVE FILED AT : DEPT. OF CULTURE & HISTORY,  
HISTORIC PRESERVATION UNIT, THE CULTURAL CENTER,  
CAPITOL COMPLEX, CHARLESTON, W.VA. 25305

DESCRIPTION OF PHOTO :

Front elevation of 3 pivotal structures, #10,  
11, & 12, in business district of Thurmond.

DIRECTION OF PHOTO :

Northeast

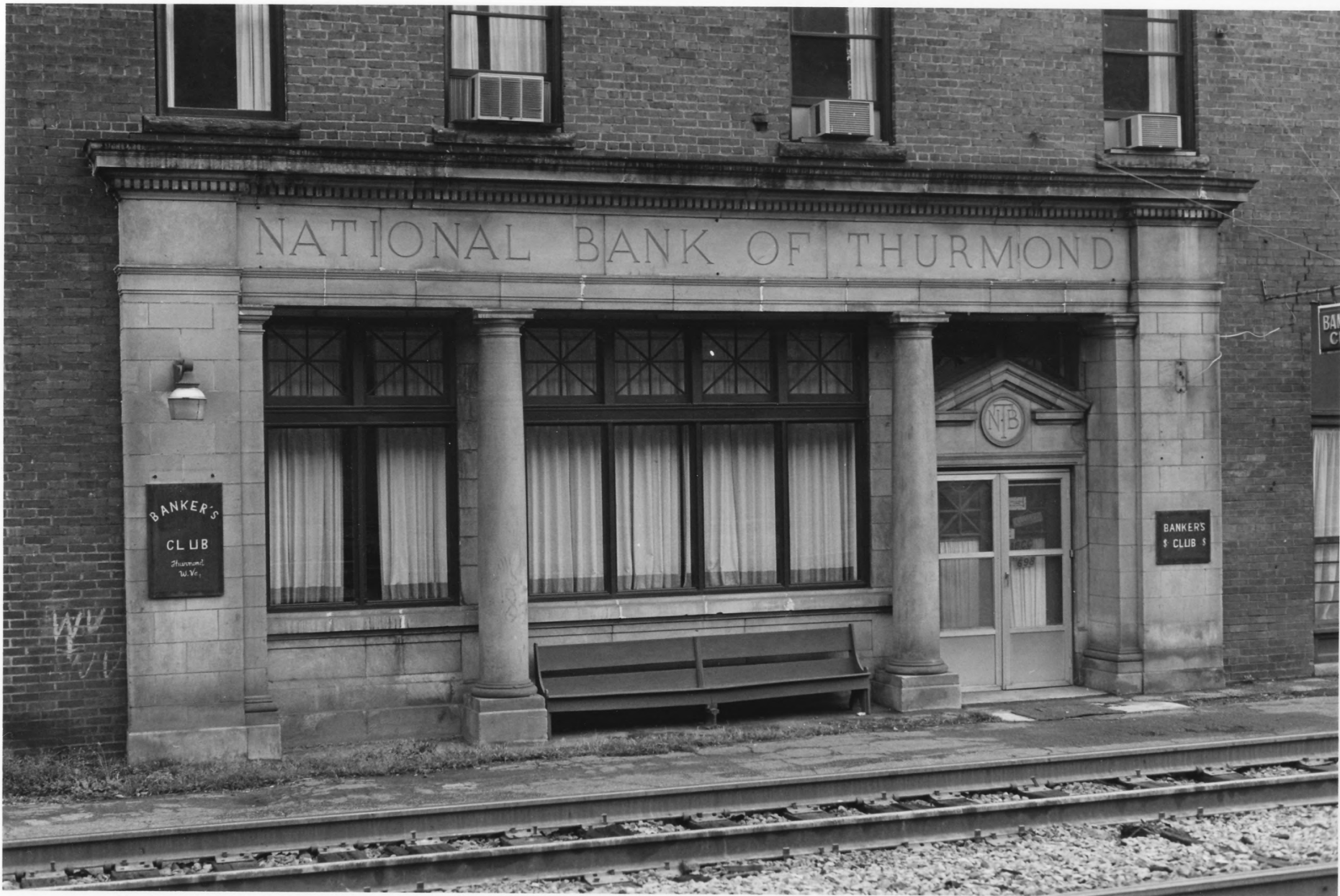
# 2 of 15



NATIONAL BANK OF THURMOND

BANKER'S  
CLUB  
Thurmond  
W. Va.

BANKERS  
& CLUB



PROPERTY NAME : Thurmond Historic District  
LOCATION : Thurmond, Fayette County, West Virginia

PHOTO CREDIT : R. Eugene Harper

DATE OF PHOTO : August, 1983

NEGATIVE FILED AT : DEPT. OF CULTURE & HISTORY,  
HISTORIC PRESERVATION UNIT, THE CULTURAL CENTER,  
CAPITOL COMPLEX, CHARLESTON, W.VA. 25305

DESCRIPTION OF PHOTO :

Detail (front, 1st floor facade) of National  
Bank of Thurmond (#12), pivotal to district.

DIRECTION OF PHOTO :

East

# 3 of 15





PROPERTY NAME : Thurmond Historic District

LOCATION : Thurmond, Fayette County, West Virginia

PHOTO CREDIT : R. Eugene Harper

DATE OF PHOTO : August, 1983

NEGATIVE FILED AT : DEPT. OF CULTURE & HISTORY,  
HISTORIC PRESERVATION UNIT, THE CULTURAL CENTER,  
CAPITOL COMPLEX, CHARLESTON, W.VA. 25305

DESCRIPTION OF PHOTO :

South and West Elevations of Thurmond Rail-  
road station (#13), pivotal to district.

DIRECTION OF PHOTO :

North

4 of 15



PROPERTY NAME : Thurmond Historic District  
LOCATION : Thurmond, Fayette County, West Virginia

PHOTO CREDIT : R. Eugene Harper

DATE OF PHOTO : August, 1983

NEGATIVE FILED AT : DEPT. OF CULTURE & HISTORY,  
'HISTORIC PRESERVATION UNIT, THE CULTURAL CENTER,  
CAPITOL COMPLEX, CHARLESTON, W.VA. 25305

DESCRIPTION OF PHOTO :

View of railroad area of Thurmond, with Rail-  
road station (#13) of Thurmond Railroad

DIRECTION OF PHOTO : Bridge (#14) at center, both  
East pivotal.

\* 5 of 15





PROPERTY NAME : Thurmond Historic District  
LOCATION : Thurmond, Fayette County, West Virginia

PHOTO CREDIT : R. Eugene Harper  
DATE OF PHOTO : August, 1983

NEGATIVE FILED AT : DEPT. OF CULTURE & HISTORY,  
HISTORIC PRESERVATION UNIT, THE CULTURAL CENTER,  
CAPITOL COMPLEX, CHARLESTON, W.VA. 25305

DESCRIPTION OF PHOTO :

South Elevation of Coal Dock (#42), contrib-  
uting structure.

DIRECTION OF PHOTO :

North

\* 6 of 15







PROPERTY NAME : Thurmond Historic District  
LOCATION : Thurmond, Fayette County, West Virginia

PHOTO CREDIT : R. Eugene Harper  
DATE OF PHOTO : August, 1983

NEGATIVE FILED AT : DEPT. OF CULTURE & HISTORY,  
HISTORIC PRESERVATION UNIT, THE CULTURAL CENTER,  
CAPITOL COMPLEX, CHARLESTON, W.VA. 25305

DESCRIPTION OF PHOTO :  
View of part of railroad yard from Thurmond  
Hill; Coal Dock (#42) at left.

DIRECTION OF PHOTO :  
West

\* 7 of 15



THURMOND UNION CHURCH

DEAD  
END

Worship  
at 10:30  
and 7:30  
P.M.  
Sunday  
School  
at 10:00  
A.M.

PROPERTY NAME : Thurmond Historic District  
LOCATION : Thurmond, Fayette County, West Virginia

PHOTO CREDIT : R. Eugene Harper

DATE OF PHOTO : August, 1983

NEGATIVE FILED AT : DEPT. OF CULTURE & HISTORY,  
HISTORIC PRESERVATION UNIT, THE CULTURAL CENTER  
CAPITOL COMPLEX, CHARLESTON, W.VA. 25305

DESCRIPTION OF PHOTO :  
North elevation of Thurmond Union Church (#2),  
pivotal to district

DIRECTION OF PHOTO :  
South

# 8 of 15





PROPERTY NAME : Thurmond Historic District  
LOCATION : Thurmond, Fayette County, West Virginia

PHOTO CREDIT : R. Eugene Harper

DATE OF PHOTO : August, 1983

NEGATIVE FILED AT : DEPT. OF CULTURE & HISTORY,  
HISTORIC PRESERVATION UNIT, THE CULTURAL CENTER,  
CAPITOL COMPLEX, CHARLESTON, W.VA. 25305

DESCRIPTION OF PHOTO :

"Fatty Lipcomb's" - John Bullock House (#7) -  
pivotal to district.

DIRECTION OF PHOTO :

North East

# 9 of 15







PROPERTY NAME : Thurmond Historic District  
LOCATION : Thurmond, Fayette County, West Virginia

PHOTO CREDIT : R. Eugene Harper

DATE OF PHOTO : August, 1983

NEGATIVE FILED AT : DEPT. OF CULTURE & HISTORY,  
HISTORIC PRESERVATION UNIT, THE CULTURAL CENTER,  
CAPITOL COMPLEX, CHARLESTON, W.VA. 25305

DESCRIPTION OF PHOTO :

Front and North side elevation of Charles  
Wells House (#1)-pivotal to district.

DIRECTION OF PHOTO :

South East

\* 10 of 15



PROPERTY NAME : Thurmond Historic District  
LOCATION : Thurmond, Fayette County, West Virginia

PHOTO CREDIT : R. Eugene Harper  
DATE OF PHOTO : August, 1983

NEGATIVE FILED AT : DEPT. OF CULTURE & HISTORY,  
HISTORIC PRESERVATION UNIT, THE CULTURAL CENTER,  
CAPITOL COMPLEX, CHARLESTON, W.VA. 25305

DESCRIPTION OF PHOTO :  
Front and Northside elevation of John Dragon  
Staff house (#4); Jack Kelly House (#5) in

DIRECTION OF PHOTO : background-both pivotal  
structures.  
South

\* 11 of 15





PROPERTY NAME : Thurmond Historic District  
LOCATION : Thurmond, Fayette County, West Virginia

PHOTO CREDIT : R. Eugene Harper

DATE OF PHOTO : August, 1983

NEGATIVE FILED AT : DEPT. OF CULTURE & HISTORY,  
HISTORIC PRESERVATION UNIT, THE CULTURAL CENTER,  
CAPITOL COMPLEX, CHARLESTON, W.VA. 25305

DESCRIPTION OF PHOTO :  
South elevation of Sid Childers/ Margie Rich-  
mond house (#18)-contributing structure.

DIRECTION OF PHOTO :  
North

# 12 of 15







PROPERTY NAME : Thurmond Historic District  
LOCATION : Thurmond, Fayette County, West Virginia

PHOTO CREDIT : R. Eugene Harper  
DATE OF PHOTO : August, 1983

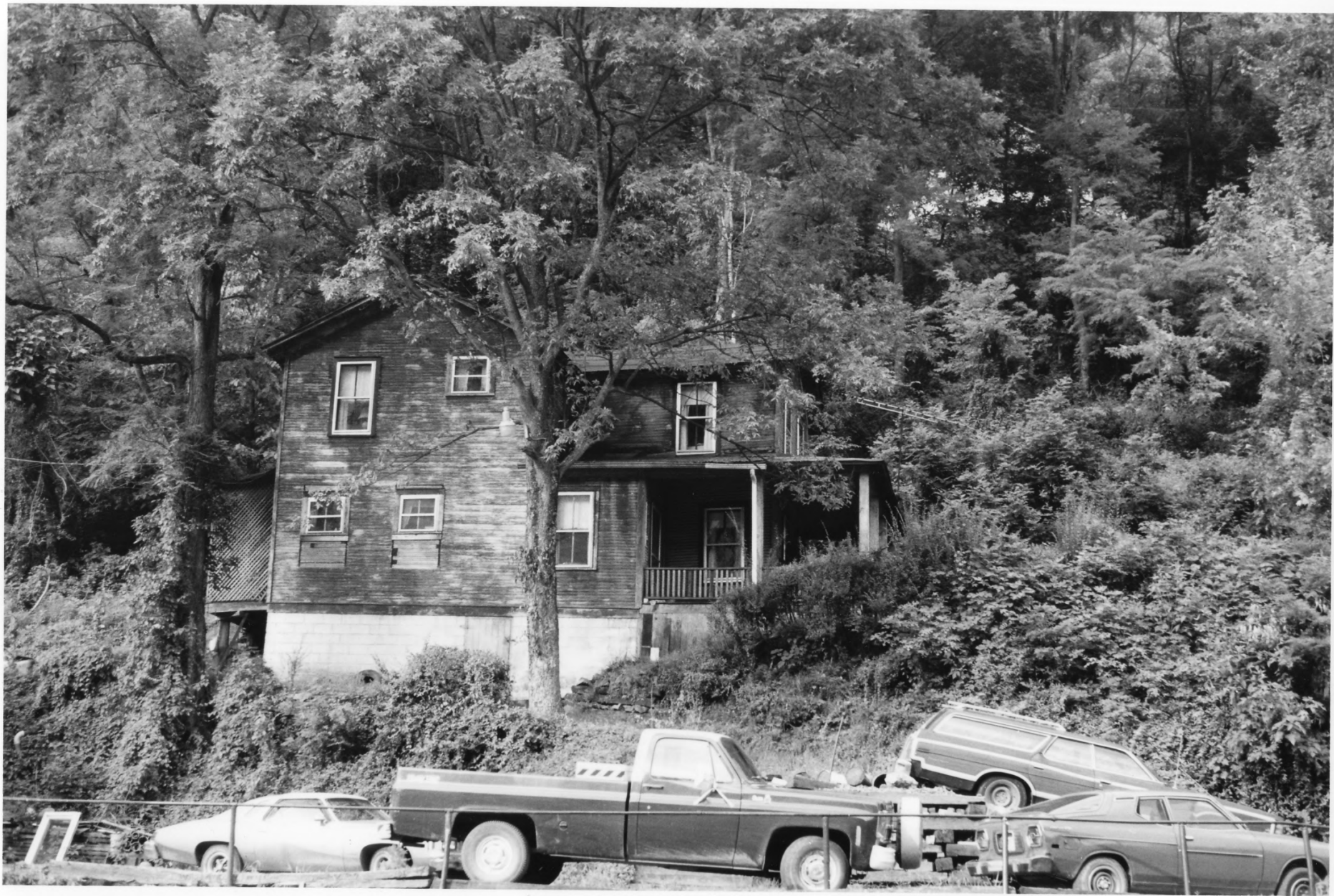
NEGATIVE FILED AT : DEPT. OF CULTURE & HISTORY,  
'HISTORIC PRESERVATION UNIT, THE CULTURAL CENTER,  
CAPITOL COMPLEX, CHARLESTON, W. VA. 25305

DESCRIPTION OF PHOTO :

South and West elevation of John Dragon House  
(#3); pivotal to district.

DIRECTION OF PHOTO :  
North

\* 13 of 15





PROPERTY NAME : Thurmond Historic District  
LOCATION : Thurmond, Fayette County, West Virginia

PHOTO CREDIT : R. Eugene Harper  
DATE OF PHOTO : August, 1983

NEGATIVE FILED AT : DEPT. OF CULTURE & HISTORY,  
HISTORIC PRESERVATION UNIT, THE CULTURAL CENTER,  
CAPITOL COMPLEX, CHARLESTON, W.VA. 25305

DESCRIPTION OF PHOTO :  
East elevation of Erskin Pugh House (#37)-  
contributing structure.

DIRECTION OF PHOTO :  
West

\* 14 of 15





PROPERTY NAME : Thurmond Historic District  
LOCATION : Thurmond, Fayette County, West Virginia

PHOTO CREDIT : R. Eugene Harper

DATE OF PHOTO : August, 1983

NEGATIVE FILED AT : DEPT. OF CULTURE & HISTORY,  
HISTORIC PRESERVATION UNIT, THE CULTURAL CENTER,  
CAPITOL COMPLEX, CHARLESTON, W.VA. 25305

DESCRIPTION OF PHOTO :

Drema Robertson House (#21) and Vivian Kelly  
House (#20); contributing structures.

DIRECTION OF PHOTO :

East

# 15 of 15