

United States Department of the Interior  
National Park Service

National Register of Historic Places  
Registration Form



This form is for use in nominating or requesting determinations for individual properties and districts. See instructions in *How to Complete the National Register of Historic Places Registration Form* (National Register Bulletin 16A). Complete each item by marking "x" in the appropriate box or by entering the information requested. If an item does not apply to the property being documented, enter "N/A" for "not applicable." For functions, architectural classification, materials, and areas of significance, enter only categories and subcategories from the instructions. Place additional entries and narrative items on continuation sheets (NPS Form 10-900a). Use a typewriter, word processor, or computer, to complete all items.

1. Name of Property

historic name Pottsville Citizen's Bank

other names/site number \_\_\_\_\_

2. Location

street & number 156 East Ash Street

☐ not for publication

city or town Pottsville

☐ vicinity

state Arkansas code AR county Pope code 115 zip code 72858

3. State/Federal Agency Certification

As the designated authority under the National Historic Preservation Act, as amended, I hereby certify that this ☒ nomination ☐  
request for determination of eligibility meets the documentation standards for registering properties in the National Register of Historic  
Places and meets the procedural and professional requirements set for in 36 CFR Part 60. In my opinion, the property ☒ meets ☐  
does not meet the National Register criteria. I recommend that this property be considered significant

☐ nationally ☐ statewide ☒ locally. (See continuation sheet for additional comments.)

Cathie Matthews  
Signature of certifying official/Title

1/25/02  
Date

Arkansas Historic Preservation Program

State or Federal agency and bureau

In my opinion, the property ☐ meets ☐ does not meet the National Register criteria. (☐ See Continuation sheet for additional comments.)

\_\_\_\_\_  
Signature of certifying official/Title

\_\_\_\_\_  
Date

\_\_\_\_\_  
State or Federal agency and bureau

4. National Park Service Certification

I hereby certify that the property is:

☒ entered in the National Register.

☐ See continuation sheet

☐ determined eligible for the  
National Register.

☐ See continuation sheet

☐ determined not eligible for the  
National Register.

☐ removed from the National  
Register.

☐ other, (explain:) \_\_\_\_\_

Edson H. Beall  
Signature of the Keeper

3/28/02  
Date of Action

Pottsville Citizen's Bank

Name of Property

Pope County, Arkansas

County and State

**5. Classification****Ownership of Property**

(Check as many boxes as apply)

- ☐ private  
☒ public-local  
☐ public-State  
☐ public-Federal

**Category of Property**

(Check only one box)

- ☒ building(s)  
☐ district  
☐ site  
☐ structure  
☐ object

**Number of Resources within Property**

(Do not include previously listed resources in count.)

Contributing

Noncontributing

|   |   |            |
|---|---|------------|
| 1 | 0 | buildings  |
| 0 | 0 | sites      |
| 0 | 0 | structures |
| 0 | 0 | objects    |
| 1 | 0 | Total      |

**Name of related multiple property listing**

(Enter "N/A" if property is not part of a multiple property listing.)

N/A

**Number of Contributing resources previously listed in the National Register**

N/A

**6. Function or Use****Historic Functions**

(Enter categories from instructions)

COMMERCE: financial institution

**Current Functions**

(Enter categories from instructions)

RECREATION AND CULTURE: museum

**7. Description****Architectural Classification**

(Enter categories from instructions)

20<sup>th</sup> Century Commercial**Materials**

(Enter categories from instructions)

foundation CONCRETE

walls BRICK

roof Tin

other

**Narrative Description**

(Describe the historic and current condition of the property on one or more continuation sheets.)

United States Department of the Interior  
National Park Service

## National Register of Historic Places Continuation Sheet

Section number 7 Page 1

### SUMMARY

The Pottsville Citizen's Bank is a simple one story commercial building located in downtown Pottsville that was constructed in 1913 and retains a very high degree of integrity. The brick constructed building is designed in a simple rectangular plan with a flat roof featuring a small parapet. The bank shares a party wall with an adjoining building to the east that was constructed circa 1920.

### ELABORATION

The Pottsville Citizen's Bank located on East Ash Street in downtown Pottsville, Arkansas, is a one-story rectangular commercial building. The brick constructed building is covered with a flat roof and rests on a continuous concrete foundation. As is the case with many commercial buildings, a higher quality brick was used for the elevations that are most clearly visible to the public. A bell used as the alarm still sits atop the building's roof. The east wall of the building is shared with a very similar commercial building that was constructed circa 1920.

### South Elevation

The façade of the building faces south toward East Ash Street. The façade is relatively simple, but has been changed only slightly since the building was constructed. An original corrugated metal awning shelters the façade of the building. A single doorway provides access to the building with the word "BANK" stamped into the sidewalk leading up to the door. The original door has been removed and the entryway made smaller to fit the new door. A transom light above the doorway has also been infilled. A large single-pane window has "CITIZENS BANK" and "CAPITAL STOCK \$15,000" painted on the window. The original lettering had worn off, but the writing was recently reapplied to the building using historic photographs as a guide. The window rests on a sill made from locally cut stone and a transom window comprised of thirty- seven diamond-shaped lights crowns the window. The windowsill is made of locally cut stone. Half-inch square ceramic tiles are laid between the sidewalk and the building's foundation.

### West Elevation

The west façade consists of the same bricks used on the south elevation of the building. The elevation is fenestrated by three large two-over-one double hung windows. Each of the three windowsills is made of cut stone and matches the windowsill on the south elevation. The glass windowpanes have been replaced over the years, but the frames are original. The only alteration to the elevation has been a thin layer of concrete that was applied to the top part of the building an unknown date.

### North Elevation

The north elevation of the building is laid with a lower-grade, rough brick of varying colors. As commonly the case with commercial buildings, the back was constructed by the least possible expense. No windows or doors are located on this elevation.

United States Department of the Interior  
National Park Service

## National Register of Historic Places Continuation Sheet

Section number 7 Page 2

### East Elevation

The east side of the building shares a wall with the neighboring store building, which was constructed circa 1920.

### Interior

The interior of the bank has had few alterations. The original tile floor is still intact under the carpeting. Marble inlays were built into the countertops at the two teller windows, each of which is decorated with engraved bracketing. The wooden partitions have never been refinished and are engraved with trefoils at the top. Marble baseboards line the customer-side of the partitions. Snowflake glass was built into the partitions to add privacy while allowing light through.

National Safe & Lock Company of Cleveland, Ohio built the vault. It features 24-inch thick walls and an airspace that makes it fireproof. The safe inside the vault is an Ely-Morris Manganese safe with screw door and a patent date of July 31, 1906. "Citizen's Bank" is written across the top of the safe. Ely-Morris Safe Company of Perth-Amboy, New Jersey, is written on the side of the safe as manufacturer and John Baumann Safe Company, 413 Washington Avenue, St. Louis, Missouri, is identified as the distributor of the safe. On the inside of the safe door is the last date the safe was inspected by Yale & Towne Manufacturing Company, Stamford, Connecticut, and is listed as September 10, 1943.

**8. Statement of Significance****Applicable National Register Criteria**

(Mark "x" in one or more boxes for the criteria qualifying the property for National Register listing.)

- ☒ **A** Property is associated with events that have made a significant contribution to the broad patterns of our history.
- ☐ **B** Property is associated with the lives of persons significant in our past.
- ☒ **C** Property embodies the distinctive characteristics of a type, period, or method of construction or represents the work of a master, or possesses high artistic values, or represents a significant and distinguishable entity whose components lack individual distinction.
- ☐ **D** Property has yielded, or is likely to yield, information important in prehistory or history.

**Criteria Considerations**

(Mark "x" in all the boxes that apply.)

Property is:

- ☐ **A** owned by a religious institution or used for religious purposes.
- ☐ **B** removed from its original location.
- ☐ **C** birthplace or grave of a historical figure of outstanding importance.
- ☐ **D** a cemetery.
- ☐ **E** a reconstructed building, object, or structure.
- ☐ **F** a commemorative property
- ☐ **G** less than 50 years of age or achieved significance within the past 50 years.

**Levels of Significance** (local, state, national)

Local

**Areas of Significance** (Enter categories from instructions)

Commerce

Architecture

**Period of Significance**

1913-1951

**Significant Dates**

1913

**Significant Person** (Complete if Criterion B is marked)

N/A

**Cultural Affiliation** (Complete if Criterion D is marked)

N/A

**Architect/Builder**

Unknown

**Narrative Statement of Significance**

(Explain the significance of the property on one or more continuation sheets.)

**9. Major Bibliographical References****Bibliography**

(Cite the books, articles, and other sources used in preparing this form on one or more continuation sheets.)

**Previous documentation on file (NPS):**

- ☐ preliminary determination of individual listing (36 CFR 67) has been requested
- ☐ previously listed in the National Register
- ☐ Previously determined eligible by the National Register
- ☐ designated a National Historic Landmark
- ☐ recorded by Historic American Buildings Survey  
# \_\_\_\_\_
- ☐ recorded by Historic American Engineering

**Primary location of additional data:**

- ☒ State Historic Preservation Office
- ☐ Other State Agency
- ☐ Federal Agency
- ☐ Local Government
- ☐ University
- ☐ Other

Name of repository:

Record # \_\_\_\_\_

United States Department of the Interior  
National Park Service

## National Register of Historic Places Continuation Sheet

Section number 8 Page 1

### Summary

The Pottsville Citizen's Bank in downtown Pottsville, Arkansas, is being nominated to the National Register of Historic Places with local significance under Criterion C for its commercial style architecture. It is also being nominated under Criterion A for its role in the development of commerce in the town, serving as the town's first bank beginning in 1913 and continuing use into the 1990s.

### Elaboration

Kirkbride Potts first settled in the Galla Creek area of Pope County in the 1820's. After two trips to California, once for gold and a second to sell cattle to the miners, Kirkbride built a two-story home. He needed this home for his large family and for the travelers who stopped periodically on the Butterfield Overland Stage. A town grew around his home. In 1897, a group of citizens petitioned the government to allow them to incorporate as a town. The name Pottsville was chosen in honor of Kirkbride Potts. General stores, train depot, drug stores, doctors' offices, blacksmith shop, café, sorghum mill, and saw mill were some of the businesses opened over the years around the Kirkbride Potts home.

It was only logical that a bank be opened for the citizenry of this small, bustling town. A bank building was erected across the street from the Kirkbride Potts home and opened for business on September 2, 1913. The first board of directors included E. R. Jones, E. R. Teeter, Roy Falls, J. H. Oates, N. E. Owens, A. H. Boggess, and J. B. Sinclair. A newspaper article announcing the opening stated, "All these gentlemen are substantial citizens and business men and are well known for their high sense of good citizenship and reliability in financial affairs." The bank was opened with \$15,000.00 capital stock, a surplus of \$1,250.00 and deposits totaling \$140,000.00. Mr. Neil Bell was the first cashier, next Mr. Roy Falls, and then last, Mr. Cicero Owens. An eleven-year-old boy, Wade A. Oates, watched for the bank to open on that first morning from a storefront bench across the street so he could make the first transaction at the new bank.

The newspaper article announcing the opening of the Pottsville Citizen's Bank was not the last time the local bank made the news. On December 13, 1926, a robber with a Santa Claus mask entered the bank, greeted everyone with "Merry Christmas" and then told them to put up their hands. Mr. Roy Falls, the cashier, thought that it was one of the locals playing a prank. According to the article, Mr. Falls "returned the salute cheerfully and told the man he would wait on him in a minute." Mr. Falls finished with the customer and then proceeded to wait on two others. The masked man once again told Mr. Falls and the other customers to put up their hands and was then joined by a second robber wearing a handkerchief over his face. It was then that Mr. Falls and the customers realized the robbers were real. The robbers took a total of \$4,200. A \$1,000 reward was issued for their arrest. The robbers were eventually caught in Oklahoma, after they had already spent most of the money paying bills in Russellville. One robber gave part of his money to his wife while the other gave part of his to his mother.



United States Department of the Interior  
National Park Service

## National Register of Historic Places Continuation Sheet

Section number 8 Page 2

Once again in March 1928, the Citizen's Bank made the headlines with an attempted robbery, this time by a man claiming to be from Chicago. This man robbed the Falls & Sinclair store, Henry's Drug Store, the post office, and broke into the depot station before attempting the Pottsville Citizen's Bank. The man had attempted to cut a large hole in the vault but was not able to gain entry. According to the newspaper article, "Pottsville is perhaps the most law-abiding community in Pope County and it is seldom that her name appears on the criminal court records. Outside talent, however, seems determined to ruin this reputation."

When the depression came to Arkansas, it affected the bank as it did all other businesses. When it seemed as if the bank would not be able to stay open, Roy Falls went to Little Rock for help. He was able to convince a group of businessmen to help him keep the Pottsville Citizen's Bank open. These businessmen provided him with cash to take back. Roy Falls put the cash in a shoebox, went back to the train depot, boarded, and rode back to Pottsville with the box of cash on his lap.

The Pottsville Citizen's Bank did not just provide for the banking needs of the town. During the mid-1930s, a barbershop was opened in the southeast corner of the bank and during elections the bank was also used as the official polling place. When "Lope" Adams was hired as night watchman for the town, he would abide in the northwest corner of the bank between his hourly patrols. Young people out socializing on cold winter nights also stopped in to play checkers and dominoes while warming up before they finished their walk home. Before being offered a match at checkers or dominoes, these young people were first greeted with a flashlight shining in their eyes, a pistol pointed at them, and a small bulldog barking at them. Once recognized, the pistol, flashlight, and bulldog were all put away.

The bank did not have any safe-deposit boxes built in. Local citizens were allowed to keep any important documents they might have in shoeboxes in the vault. It is not known if there was any charge for this service.

In December 1966, the Pottsville Citizen's Bank was consolidated with People's Bank & Trust Company of Russellville. This did not, however, end its history of bank robberies. In the early 1980s, it was robbed one last time. Instead of using stolen cars for their getaway, these robbers used a dirt bike. History repeated itself in that the robbers were once again caught.

The Pottsville Citizen's Bank Building closed its door as a bank in 1992. Mr. Wade A. Oates, who made the first transaction, was on hand to make the final transaction at 4 p.m. on Tuesday, June 30, at the age of 90. Worthen Bank, which replaced People's Bank & Trust, donated the Pottsville Citizen's Bank building to the town of Pottsville to be used for municipal purposes.



United States Department of the Interior  
National Park Service

## National Register of Historic Places Continuation Sheet

Section number 8 Page 3

---

### Statement of Significance

The Pottsville Citizen's Bank is being nominated to the National Register under **Criterion C** with **local significance** as an excellent example of small town commercial architecture as it maintains many original features on both the exterior and interior. The building served as the town's first bank and continued to serve as a bank until the early 1990s. Therefore, it is also being nominated under **Criterion A** for the role it played in the development of the town of Pottsville.

United States Department of the Interior  
National Park Service

## National Register of Historic Places Continuation Sheet

Section number 9 Page 1

---

### Bibliography:

Baker, Velva. Personal interview. July 18, 2001.

Blake, James H. Personal interview. July 21, 2001.

"Daylight Robbery of Pottsville Bank Today." The Courier-Democrat. December 23, 1926. Pp. 1, 3.

Falls, Jeanice. Personal interview. July 18, 2001.

Falls, Mary Ann Sinclair, Molly Falls' Scrapbooks. Little Rock, Arkansas: J & B Quality Book Bindery, 1988. Pp. 136, 209, 215.

Oates, Charles Wade. Personal interview. May 2001.

Taylor, Kenneth. Personal interview. July 20, 2001.

Taylor, Wanda. Personal interview. July 20, 2001.

Teeter, Russell. Personal interview. July 20, 2001.

Teeter, William. Personal interview. July 20, 2001.

Pottsville Citizen's Bank  
Name of Property

Pope County, Arkansas  
County and State

## 10. Geographical Data

Acreage of Property Less than one acre.

### UTM References

(Place additional UTM references on a continuation sheet.)

1 15 495833 3900546  
Zone Easting Northing  
2 \_\_\_\_\_

3 \_\_\_\_\_  
Zone Easting Northing  
4 \_\_\_\_\_

☐ See continuation sheet

### Verbal Boundary Description

(Describe the boundaries of the property on a continuation sheet.)

Part of Lot Seven (7), Block "A", in the original town of Pottsville, Arkansas.

### Boundary Justification

The boundary includes all land historically associated with the bank.

## 11. Form Prepared By

name/title Pamela L. Scarber  
organization Pottsville Historical Association date September 5, 2001  
street & number 845 East Ash Street telephone (501) 967-1194  
city or town Pottsville state AR zip code 72858

### Additional Documentation

Submit the following items with the completed form:

### Continuation Sheets

### Maps

A **USGS map** (7.5 or 15 minute series) indicating the property's location

A **Sketch map** for historic districts and properties having large acreage or numerous resources.

### Photographs

Representative **black and white photographs** of the property.

### Additional items

(Check with the SHPO or FPO for any additional items.)

## Property Owner

(Complete this item at the request of SHPO or FPO.)

name \_\_\_\_\_  
street & number \_\_\_\_\_ telephone \_\_\_\_\_  
city or town \_\_\_\_\_ state \_\_\_\_\_ zip code \_\_\_\_\_

**Paperwork Reduction Act Statement:** This information is being collected for applications to the National Register of Historic Places to nominate properties for listing or determine eligibility for listing, to list properties, and to amend existing listing. Response to this request is required to obtain a benefit in accordance with the National Historic Preservation Act, as amended (16 U.S.C. 470 *et seq.*)

**Estimated Burden Statement:** Public reporting burden for this form is estimated to average 18.1 hours per response including time for reviewing instructions, gathering and maintaining data, and completing and reviewing the form. Direct comments regarding this burden estimate or any aspect of this form to the Chief, Administrative Services Division, National Park Service, P. O. Box 37127, Washington, DC 20013-7127; and the Office of Management and Budget, Paperwork Reductions Projects (1024-0018), Washington, DC 20303.

UNITED STATES DEPARTMENT OF THE INTERIOR  
NATIONAL PARK SERVICE

NATIONAL REGISTER OF HISTORIC PLACES  
EVALUATION/RETURN SHEET

REQUESTED ACTION: NOMINATION

PROPERTY Pottsville Citizen's Bank  
NAME:

MULTIPLE  
NAME:

STATE & COUNTY: ARKANSAS, Pope

DATE RECEIVED: 2/17/02 DATE OF PENDING LIST:  
DATE OF 16TH DAY: DATE OF 45TH DAY: 4/03/02  
DATE OF WEEKLY LIST:

REFERENCE NUMBER: 02000261

REASONS FOR REVIEW:

APPEAL: N DATA PROBLEM: N LANDSCAPE: N LESS THAN 50 YEARS: N  
OTHER: N PDIL: N PERIOD: N PROGRAM UNAPPROVED: N  
REQUEST: N SAMPLE: N SLR DRAFT: N NATIONAL: N

COMMENT WAIVER: N

J ACCEPT \_\_\_\_\_ RETURN \_\_\_\_\_ REJECT 3/28/02 DATE

ABSTRACT/SUMMARY COMMENTS:

Entered in the  
National Register

RECOM./CRITERIA \_\_\_\_\_

REVIEWER \_\_\_\_\_ DISCIPLINE \_\_\_\_\_

TELEPHONE \_\_\_\_\_ DATE \_\_\_\_\_

DOCUMENTATION see attached comments Y/N see attached SLR Y/N





1. Pottsville Citizen's Bank
2. Pope County, AR
3. Zec Cothren
4. Sept 2001
5. AHPP
6. South Elevation
7. #1





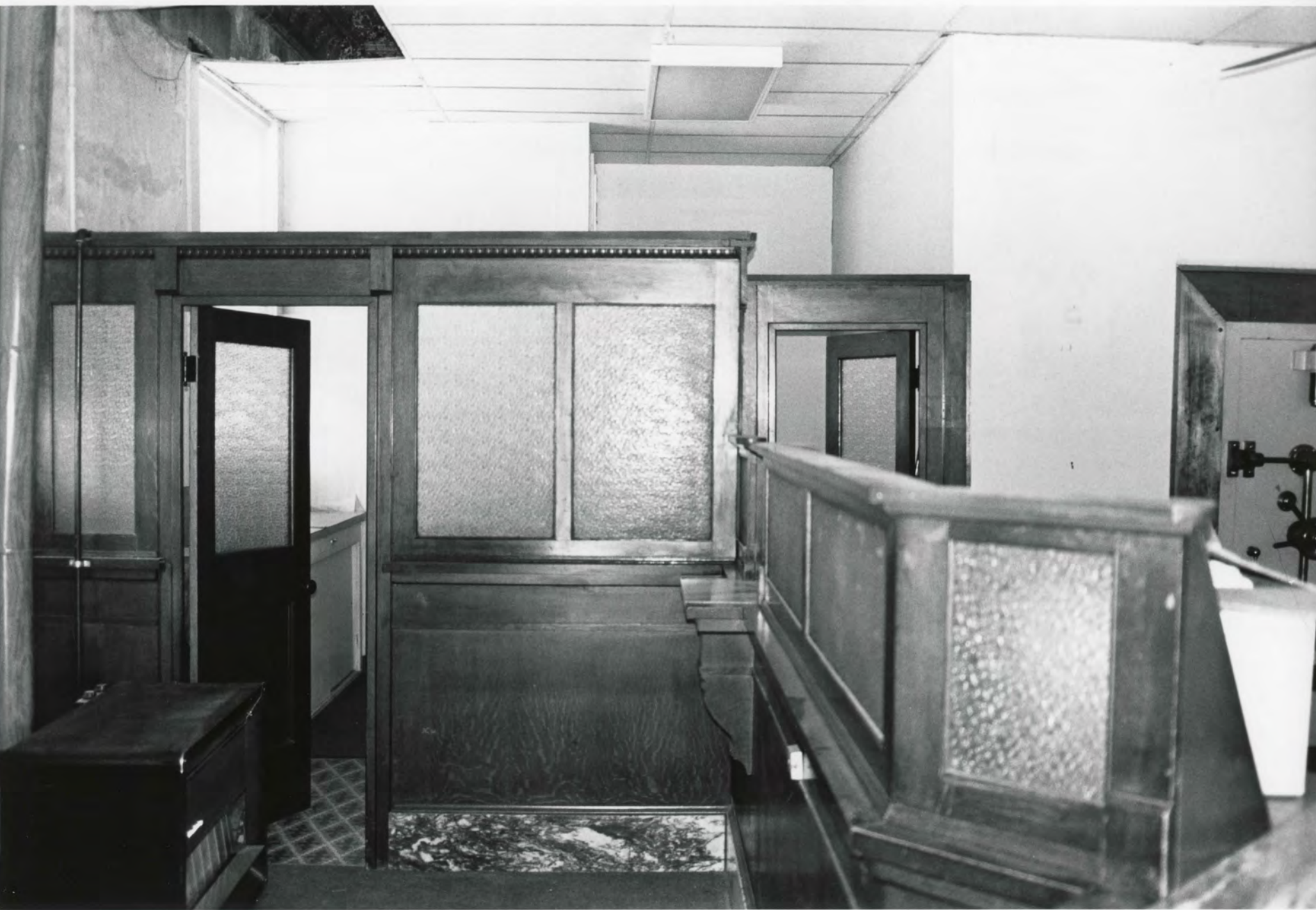
1. Pottsville Citizen's Bank
2. Pope County, AR
3. Zoe Cothren
4. Sept 2001
5. AHPP
6. West elevation
7. #2





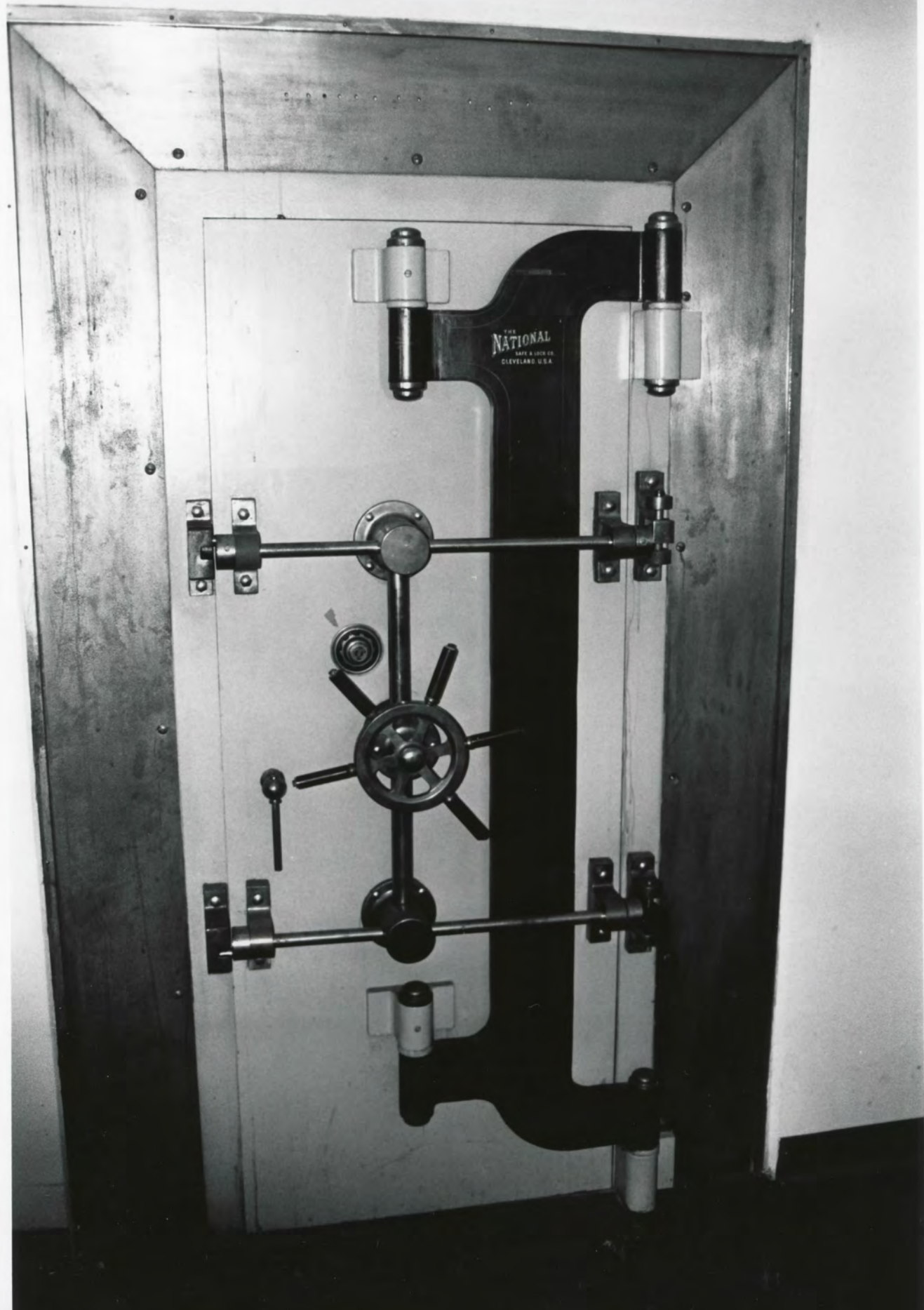


1. Pottsville Citizen's Bank
2. Pope County, AR
3. Zac Cuthren
4. Sept - 2001
5. AHPP
6. North elevation
7. #3



1. Pottsville Citizen's Bank
2. Pope County, AR
3. Zac Cothren
4. Sept. 2001
5. AHPP
6. interior
7. #4





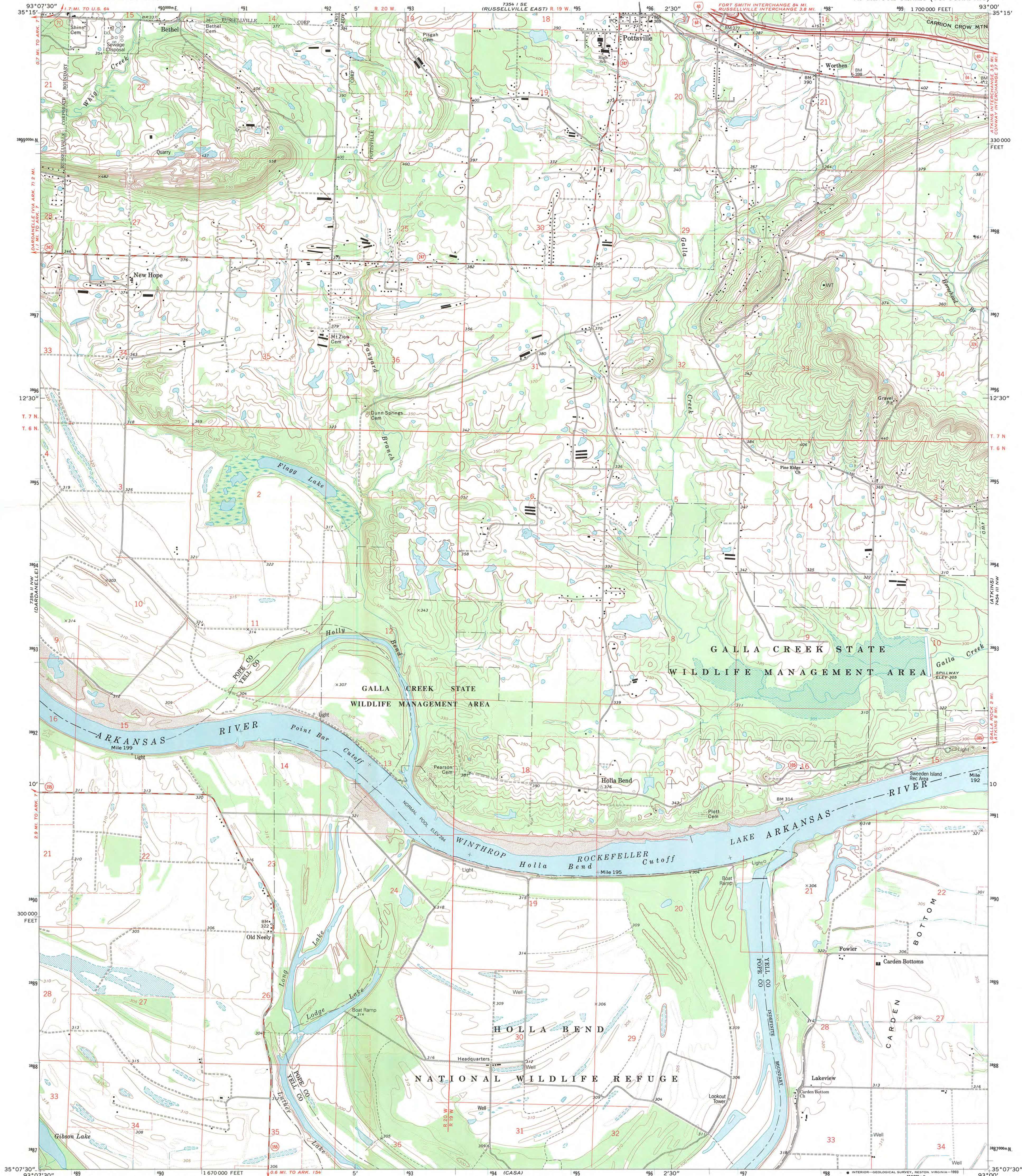
1. Pottsville Citizen's Bank
2. Pope County, AR
3. Zac Cochran
4. Sept. 2001
5. AHPP
6. interior
7. # 5



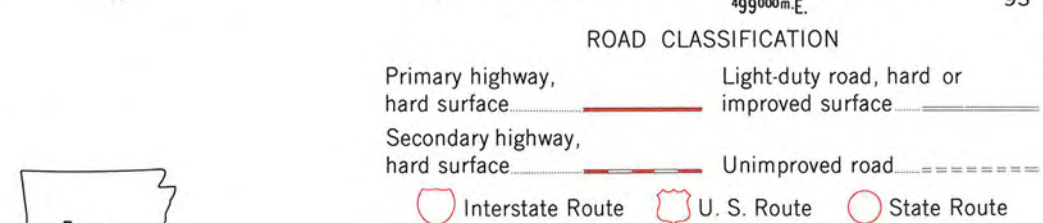
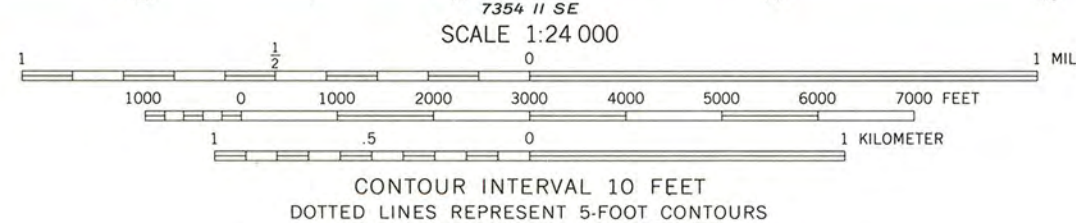
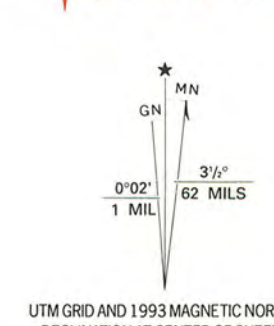
Pottsville Citizen's Bank  
Pottsville, Pope Co., AR  
UTM:15/495833/3900546

UNITED STATES  
DEPARTMENT OF THE INTERIOR  
GEOLOGICAL SURVEY

HOLLA BEND QUADRANGLE  
ARKANSAS  
7.5 MINUTE SERIES (TOPOGRAPHIC)



Produced by the United States Geological Survey  
Control by USGS and NOS/NOAA  
Topography by photogrammetric methods from aerial photographs  
taken 1971. Field checked 1972. Revised from aerial photographs  
taken 1989. Field checked 1992. Map edited 1993  
Projection and 10,000-foot grid ticks: Arkansas coordinate  
system, north zone (Lambert conformal conic)  
1000-meter Universal Transverse Mercator grid ticks, zone 15, shown in blue  
1927 North American Datum (NAD 27)  
North American Datum of 1983 (NAD 83) is shown by dashed corner ticks  
The values of the shift between NAD 27 and NAD 83 for 7.5-minute  
intersections are given in USGS Bulletin 1875  
There may be private inholdings within the boundaries of  
the National or State reservations shown on this map  
Area covered by dashed light-blue pattern  
are subject to controlled inundation  
Fine red dashed lines indicate selected fence and field lines where  
generally visible on aerial photographs. This information is unchecked



THIS MAP COMPLIES WITH NATIONAL MAP ACCURACY STANDARDS  
FOR SALE BY U.S. GEOLOGICAL SURVEY, DENVER, COLORADO 80225, OR RESTON, VIRGINIA 22092  
AND BY THE ARKANSAS GEOLOGICAL COMMISSION, LITTLE ROCK, ARKANSAS 72201  
A FOLDER DESCRIBING TOPOGRAPHIC MAPS AND SYMBOLS IS AVAILABLE ON REQUEST

HOLLA BEND, ARK.  
35093-B1-TF-024  
1993  
DMA 7354 II NE-SERIES V884





# The Department of Arkansas Heritage

Mike Huckabee, Governor  
Cathie Matthews, Director

Arkansas Arts Council

Arkansas Natural Heritage  
Commission

Historic Arkansas Museum

Delta Cultural Center

Old State House Museum



## Arkansas Historic Preservation Program

1500 Tower Building  
323 Center Street  
Little Rock, AR 72201

(501)324-9880

fax: (501)324-9184

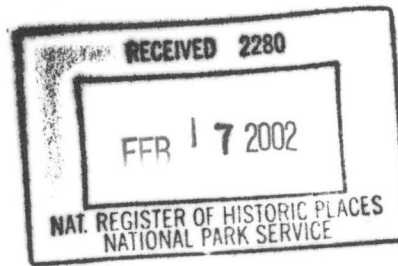
tdd: (501)324-9811

e-mail:

info@arkansaspreservation.org

website:

www.arkansaspreservation.org



November 28, 2001

Carol D. Shull  
Chief of Registration  
United States Department of the Interior  
National Register of Historic Places  
National Park Service  
1849 C St. NW  
Washington, D.C. 20240

RE: Pottsville Citizen's Bank- Pottsville, Pope County.

Dear Carol:

We are enclosing for your review the nomination of the above-referenced property. The Arkansas Historic Preservation Program has complied with all applicable nominating procedures and notification requirements in the nomination process.

Thank you for your consideration in this matter.

Sincerely,

Cathie Matthews,  
State Historic Preservation Officer

CM:zc

Enclosures

An Equal Opportunity Employer



PRINTED WITH  
SOY INK