



Pioneer Park, bounded by W. Las Cruces,
W. Court, N. Miranda and N. Reymond (S).
Looking northeast.

Las Cruces Depot - Alameda Historic District
Las Cruces, Dona Ana County

Betsy Swanson

New Mexico Historic Preservation Division

April, 1984



266 W. Court (S)(*).

Looking north.

Las Cruces Depot - Alameda Historic District

Las Cruces, Dona Ana County

Betsy Swanson

New Mexico Historic Preservation Division

April, 1984



405 W. Organ (S)(*), 427 W. Organ (C).

Looking southeast.

Las Cruces Depot - Alameda Historic District

Las Cruces, Dona Ana County

Betsy Swanson

New Mexico Historic Preservation Division

April, 1984



PHILLIS BRIDGES
INTERIORS
ACCESSORIES
& GIFTS
MON-FRI 10-5
SAT 10-4PM

331 Las Cruces (Sup).

Looking southeast.

Las Cruces Depot - Alameda Historic District

Las Cruces, Dona Ana County

Betsy Swanson

New Mexico Historic Preservation Division

April, 1984



208 N. Miranda (S)(*)

202 N. Miranda (S)(*)

Looking southeast.

Las Cruces Depot - Alameda Historic District
Las Cruces, Dona Ana County

Betsy Swanson

New Mexico Historic Preservation Division

April, 1984



NO
TRUCKS

715 W. Las Cruces (Sup),

719 W. Las Cruces (S),

721 W. Las Cruces (S).

Looking southwest.

Las Cruces Depot - Alameda Historic District
Las Cruces, Dona Ana County

Betsy Swanson

New Mexico Historic Preservation Division

April, 1984



450 W. Picacho (S)(*),
front facade, looking northwest.

Las Cruces Depot - Alameda Historic District
Las Cruces, Dona Ana County

Betsy Swanson

New Mexico Historic Preservation Division

April, 1984



EARL NISSEN
524-1343
STEINBORN
INC. REALTORS®
526-4491
Better
Homes
and Gardens®

604 W. Organ (NC).
Looking northwest.

Las Cruces Depot - Alameda Historic District
Las Cruces, Dona Ana County

Betsy Swanson
New Mexico Historic Preservation Division
April, 1984



1100 N. Alameda (S) (*)

Looking east.

Las Cruces Depot - Alameda Historic District
Las Cruces, Dona Ana County

Betsy Swanson

New Mexico Historic Preservation Division

April, 1984



750 W. Las Cruces (NC), 730-728 W. Las Cruces
(S), 720 W. Las Cruces (NC).

Looking northeast.

Las Cruces Depot - Alameda Historic District
Las Cruces, Dona Ana County

Betsy Swanson

New Mexico Historic Preservation Division

April, 1984



716 N. Armijo (S),
702 N. Armijo (S).
Looking northeast.

Las Cruces Depot - Alameda Historic District
Las Cruces, Dona Ana County

Betsy Swanson
New Mexico Historic Preservation Division
April, 1984



409 W. Las Cruces (S)(*),

415 W. Las Cruces (S).

Looking southeast.

Las Cruces Depot - Alameda Historic District

Las Cruces, Dona Ana County

Betsy Swanson

New Mexico Historic Preservation Division

April, 1984



226 W. Willoughby (S).

Looking north.

Las Cruces Depot - Alameda Historic District

Las Cruces, Dona Ana County

Betsy Swanson

New Mexico Historic Preservation Division

April, 1984



130 W. Greening (S)(*).

Looking north.

Las Cruces Depot - Alameda Historic District

Las Cruces, Dona Ana County

Betsy Swanson

New Mexico Historic Preservation Division

April, 1984



1137 N. Alameda (S)(*),

1145 N. Alameda (C).

Looking northwest.

Las Cruces Depot - Alameda Historic District

Las Cruces, Dona Ana County

Betsy Swanson

New Mexico Historic Preservation Division

April, 1984



1209 N. Alameda (S)(*)

Looking west.

Las Cruces Depot - Alameda Historic District

Las Cruces, Dona Ana County

Betsy Swanson

New Mexico Historic Preservation Division

April, 1984



1008 N. Alameda (S)(*)

Looking northeast.

Las Cruces Depot - Alameda Historic District

Las Cruces, Dona Ana County

Betsy Swanson

New Mexico Historic Preservation Division

April, 1984



641 W. May (Sup),
645 W. May (S)(*).
Looking south.

Las Cruces Depot - Alameda Historic District
Las Cruces, Dona Ana County

Betsy Swanson
New Mexico Historic Preservation Division
April, 1984



250 W. Court (S)(*).

Looking northeast.

Las Cruces Depot - Alameda Historic District
Las Cruces, Dona Ana County

Betsy Swanson

New Mexico Historic Preservation Division

April, 1984



167 W. Lucero (S)(*),
201 W. Lucero (S)(*).
Looking southeast.

Las Cruces Depot - Alameda Historic District
Las Cruces, Dona Ana County

Betsy Swanson
New Mexico Historic Preservation Division
April, 1984



138 W. Lucero (S).
Looking northeast.

Las Cruces Depot - Alameda Historic District
Las Cruces, Dona Ana County

Betsy Swanson

New Mexico Historic Preservation Division
April, 1984 .



First Baptist Church, 106 S. Miranda (S)(*),
570-580-590 W. Griggs (S)(*),
562 W. Griggs (Sup). Looking west.

Las Cruces Depot - Alameda Historic District
Las Cruces, Dona Ana County

Betsy Swanson

New Mexico Historic Preservation Division

April, 1984

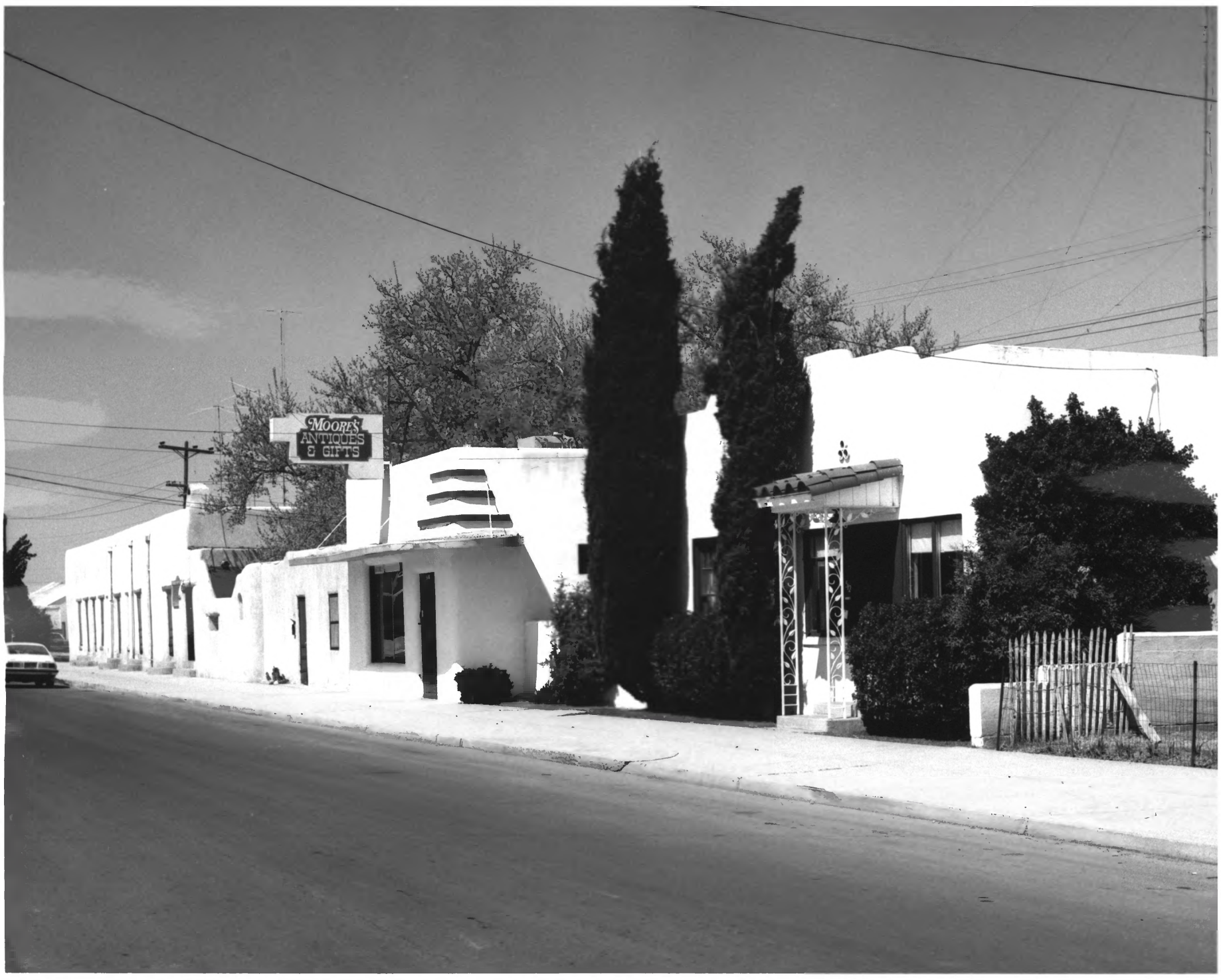


150 N. Miranda and
570-580-590 W. Griggs (S)(*)
Looking northeast.

Las Cruces Depot - Alameda Historic District
Las Cruces, Dona Ana County

Betsy Swanson
New Mexico Historic Preservation Division
April, 1984

MOORE'S
ANTIQUES
& GIFTS



512 W. Griggs (C), 514 W. Griggs (Sup),
562 W. Griggs (Sup), 570-580-590 W. Griggs
(S)(*). Looking northwest.

Las Cruces Depot - Alameda Historic District
Las Cruces, Dona Ana County

Betsy Swanson

New Mexico Historic Preservation Division

April, 1984



406 W. Las Cruces (S)(*),
400 W. Las Cruces (S)(*).
Looking northwest.

Las Cruces Depot - Alameda Historic District
Las Cruces, Dona Ana County

Betsy Swanson

New Mexico Historic Preservation Division
April, 1984



AMADOR
HOUSE
Antiques

117 S. Miranda (S)(*)

Looking east.

Las Cruces Depot - Alameda Historic District
Las Cruces, Dona Ana County

Betsy Swanson

New Mexico Historic Preservation Division

April, 1984



634 W. Court (S)(*).

Looking northwest.

Las Cruces Depot - Alameda Historic District

Las Cruces, Dona Ana County

Betsy Swanson

New Mexico Historic Preservation Division

April, 1984



Atchison, Topeka and Santa Fe Railroad Depot,
800 W. Las Cruces (S)(*). Looking west.

Las Cruces Depot - Alameda Historic District
Las Cruces, Dona Ana County

Betsy Swanson

New Mexico Historic Preservation Division

April, 1984



St. Andrew's Episcopal Church (Sup)
and Chapel (S)(*), 518 N. Alameda.
Looking southeast.

Las Cruces Depot - Alameda Historic District
Las Cruces, Dona Ana County

Betsy Swanson

New Mexico Historic Preservation Division

April, 1984



Alameda Junior High School
(old Union High School),
808 N. Alameda (S)(*). Looking southeast.

Las Cruces Depot - Alameda Historic District
Las Cruces, Dona Ana County

Betsy Swanson
New Mexico Historic Preservation Division
April, 1984



530 W. Court (Sup),
520 W. Court (Sup).
Looking northeast.

Las Cruces Depot - Alameda Historic District
Las Cruces, Dona Ana County

Betsy Swanson

New Mexico Historic Preservation Division

April, 1984



UPHOLSTERY

414 W. Griggs (S)(*)

Looking north.

Las Cruces Depot - Alameda Historic District

Las Cruces, Dona Ana County

Betsy Swanson

New Mexico Historic Preservation Division

April, 1984



428 W. Griggs (S)(*).

Looking northeast.

Las Cruces Depot - Alameda Historic District
Las Cruces, Dona Ana County

Betsy Swanson

New Mexico Historic Preservation Division

April, 1984



311 S. Miranda (S), 317 S. Miranda (S),
323 S. Miranda (S). Looking southeast.

Las Cruces Depot - Alameda Historic District
Las Cruces, Dona Ana County

Betsy Swanson

New Mexico Historic Preservation Division

April, 1984



137 S. Miranda (S)(*), 201 S. Miranda (S),
211 S. Miranda (S). Looking east.

Las Cruces Depot - Alameda Historic District
Las Cruces, Dona Ana County

Betsy Swanson

New Mexico Historic Preservation Division

April, 1984



247 S. Reymond (S),
301 S. Reymond (C).
Looking northeast.

Las Cruces Depot - Alameda Historic District
Las Cruces, Dona Ana County

Betsy Swanson

New Mexico Historic Preservation Division

April, 1984



509 W. Las Cruces (S)(*),

519 W. Las Cruces (C).

Looking southeast.

Las Cruces Depot - Alameda Historic District

Las Cruces, Dona Ana County

Betsy Swanson

New Mexico Historic Preservation Division

April, 1984



606 W. Court (S)(*),
616 W. Court (C).
Looking northwest.

Las Cruces Depot - Alameda Historic District
Las Cruces, Dona Ana County

Betsy Swanson
New Mexico Historic Preservation Division
April, 1984



THE BAKERY

Birkenshoe

P...S HOUSE

STOP

425 W. Griggs (S), 437 W. Griggs (S).

Looking southeast.

Las Cruces Depot - Alameda Historic District

Las Cruces, Dona Ana County

Betsy Swanson

New Mexico Historic Preservation Division

April, 1984



635 W. Las Cruces (S)(*),

645 W. Las Cruces (S).

Looking southeast.

Las Cruces Depot - Alameda Historic District

Las Cruces, Dona Ana County

Betsy Swanson

New Mexico Historic Preservation Division

April, 1984