



Charles J. Schnabel and Elsa Anne Smith Schnabel
at 2375 SW Park Place Residence

Elsa was daughter of industrialist Charles E. Smith
was residence of Charles E. Smith Family from 1909-12
and his widow, Mrs. Hedwig Anna Marie Hansen Smith
until 1940

She built Congress Hotel in partnership
with Charles J. Schnabel

and was one of the founders of Oregon Symphony

J
D

Home built in 1907.

Photo taken in 1909

FOR NAT'L REGISTER NOMINATION:

- CHARLES J. SCHNABEL RESIDENCE
CIRCA 1909
- PORTLAND
MULTNOMATH COUNTY
- OREGON
- page 2 of 2 PHOTOS SECTION
- ROBERT E. CLAY
2375 SW. PARK PLACE
PORTLAND, OREGON 97205
(PHOTO GIVEN TO MR. CLAY BY MRS. CHARLES
(EVELYN) (SANTÉE) SCHNABEL, JR.
- OREGON HISTORICAL SOCIETY
PHOTOGRAPHS DEPT.
1230 S.W. PARK AVENUE
PORTLAND, OREGON 97205
- Orhi # 76617, #1650
- VIEW -
FRONT/SOUTH ELEVATION - PARK PLACE
STREET LEVEL

Schnabel, Charles J. and Elsa, House
2375 SW Park Place
Portland, Multnomah County, Oregon

1 of 12
Historic view, 1909 *SOUTH ELEVATION*
Oregon Historical Society Collections
Orhi 76617 #1650
1230 SW Park Avenue, Portland OR 97205

**THIS PHOTOPRINT IS ISSUED
FOR REFERENCE USE ONLY.
PERMISSION FOR EACH
REPRODUCTION MUST BE
REQUESTED.**

Oregon Historical Society
1230 SW PARK AVENUE
PORTLAND, OREGON 97205

NEGATIVE NUMBER:

orhi 76617

#1650

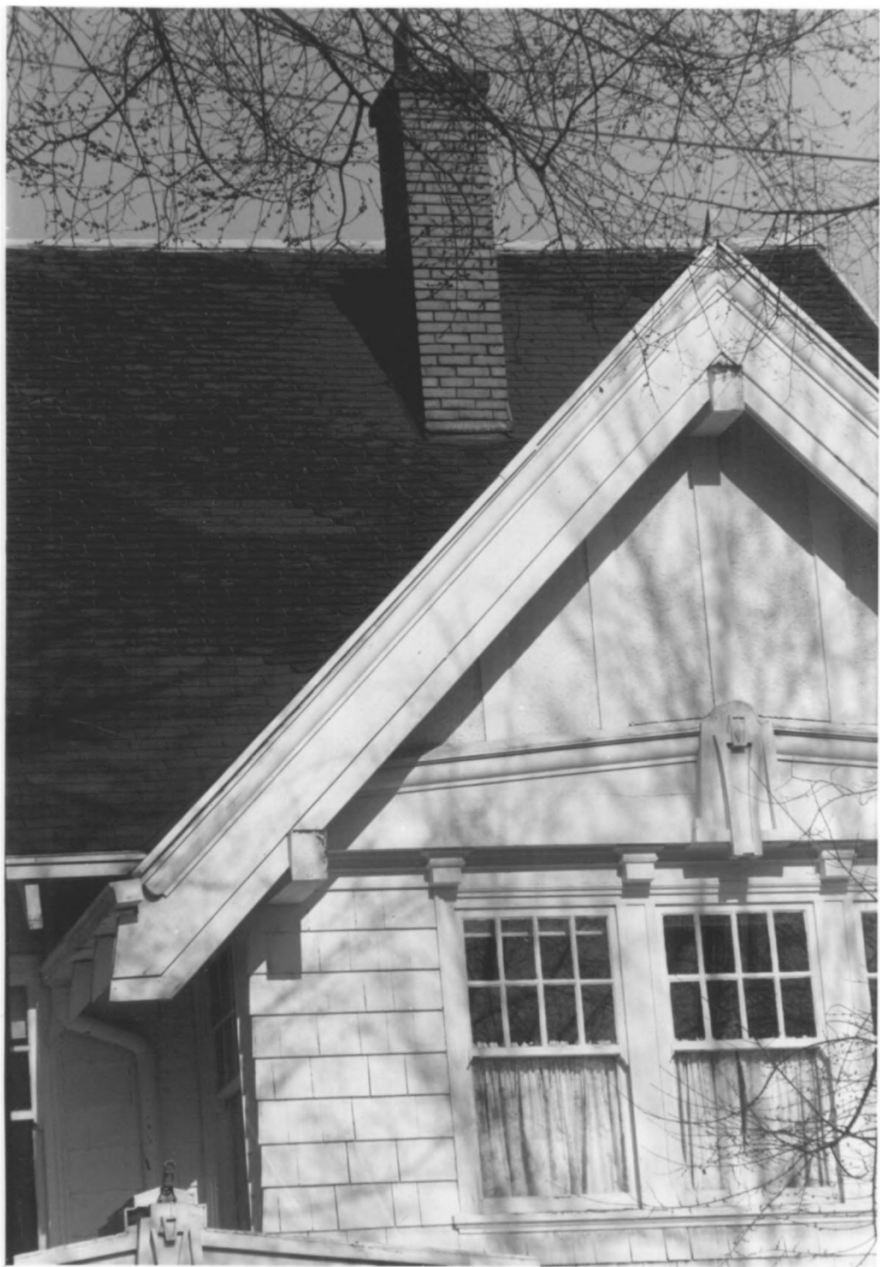


Schnabel, Charles J. and Elsa, House
2375 SW Park Place
Portland, Multnomah County, Oregon

Robert E. Clay Photo, 1986
2375 SW Park Place
Portland OR 97205

2 of 12

South (front) elevation showing
historic ground story remodeling of
1930.



Schnabel, Charles J. and Elsa, House
2375 SW Park Place
Portland, Multnomah County, Oregon

Robert E. Clay Photo, 1986
2375 SW Park Place
Portland OR 97205

3 of 12

Detail of front gable.

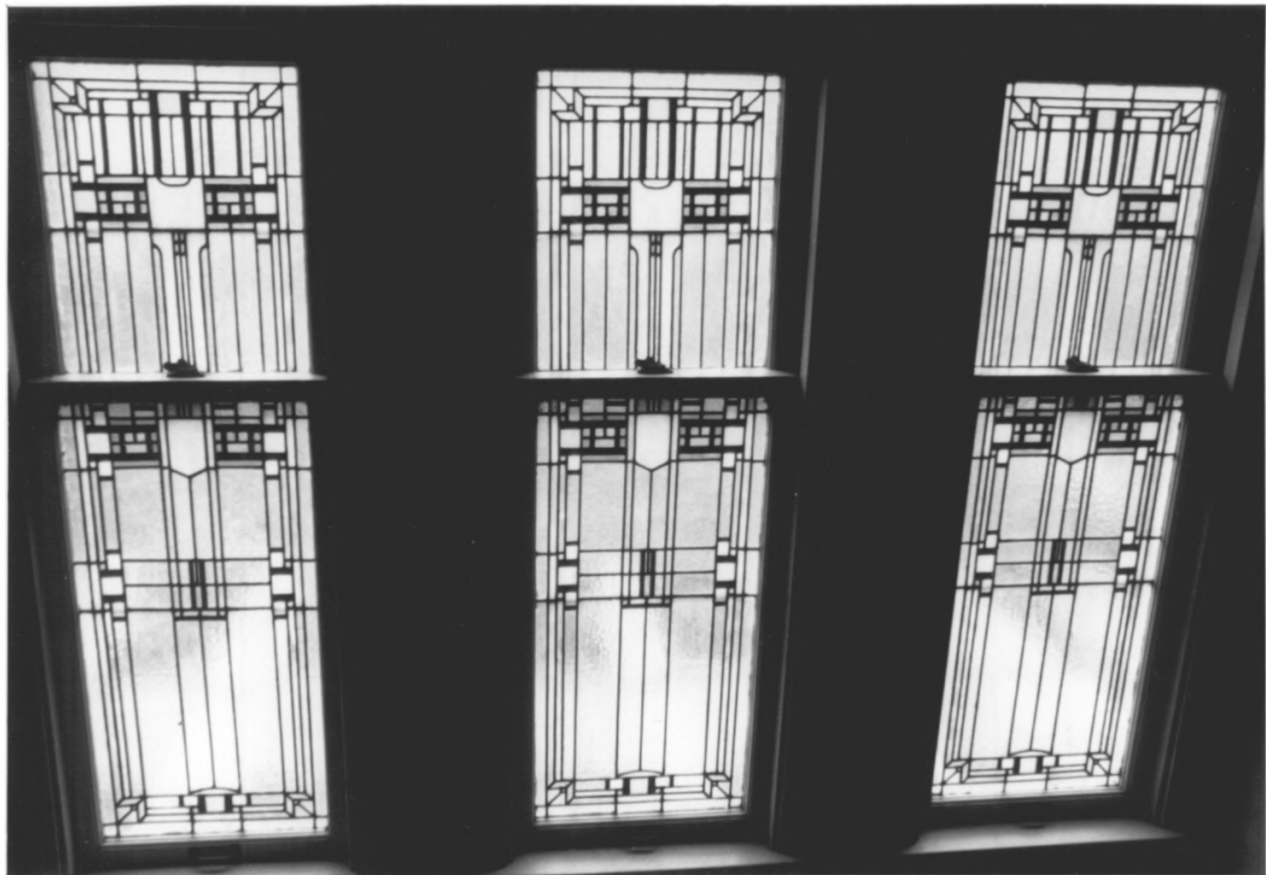


Schnabel, Charles J. and Elsa, House
2375 SW Park Place
Portland, Multnomah County, Oregon

Robert E. Clay Photo, 1986
2375 SW Park Place
Portland OR 97205

4 of 12

Detail of entrance stairhall pilaster
having capital embellished with
stylized keystones which are the
architect's signature motifs.

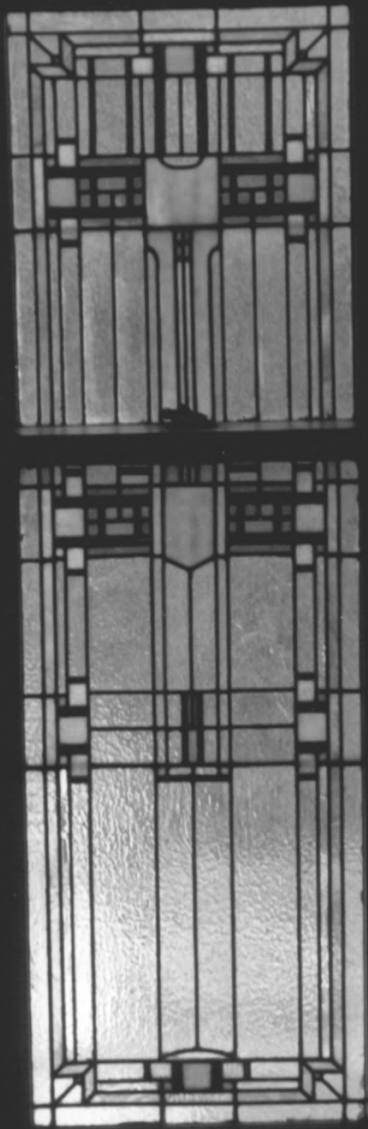


Schnabel, Charles J. and Elsa, House
2375 SW Park Place
Portland, Multnomah County, Oregon

Robert E. Clay Photo, 1986
2375 SW Park Place
Portland OR 97205

5 of 12

Stained glass windows lighting staircase landing area. The glass manufactured by noted Povey Bros. firm.



Schnabel, Charles J. and Elsa, House
2375 SW Park Place
Portland, Multnomah County, Oregon

Robert E. Clay Photo, 1986
2375 SW Park Place
Portland OR 97205

6 of 12

Close view of staircase landing window
manufactured by Povey Brothers Studio.



Schnabel, Charles J. and Elsa, House
2375 SW Park Place
Portland, Multnomah County, Oregon

Robert E. Clay Photo, 1986
2375 SW Park Place
Portland OR 97205

7 of 12

Brick library fireplace surround with decorative inset panel in basket weave pattern using glazed ceramic tiles.



Schnabel, Charles J. and Elsa, House
2375 SW Park Place
Portland, Multnomah County, Oregon

Robert E. Clay Photo, 1986
2375 SW Park Place
Portland OR 97205

8 of 12

Library ceiling lighting fixture.



Schnabel, Charles J. and Elsa, House
2375 SW Park Place
Portland, Multnomah County, Oregon

Robert E. Clay Photo, 1986
2375 SW Park Place
Portland OR 97205

9 of 12

Stylized cross motif frames see-
through aperture in pantry doors.



Schnabel, Charles J. and Elsa, House
2375 SW Park Place
Portland, Multnomah County, Oregon

Robert E. Clay Photo, 1986
2375 SW Park Place
Portland OR 97205

10 of 12
Servants' bell box.



Schnabel, Charles J. and Elsa, House
2375 SW Park Place
Portland, Multnomah County, Oregon

Robert E. Clay Photo, 1986
2375 SW Park Place
Portland OR 97205

11 of 12

One of three original intercome
phones remaining in place.



W. C. Knighton 1889

Schnabel, Charles J. and Elsa, House
2375 SW Park Place
Portland, Multnomah County, Oregon

12 of 12 Historic portrait, c. 1910
William C. Knighton, architect
Oregon Historical Society Collections
Orhi 77406 #620
1230 SW Park Avenue, Portland OR 97205