



1. Verde River Sheep Bridge
2. Sec. 35, T.9.N, R.6.E.  
6&SRB&M, Arizona
3. Wm. A. Forbord
4. June, 1975
5. Tonto National Forest  
102 S. 28th St.  
Phoenix, Az 85002

NOV 21 1978

JUL 31 1978

6. View of Verde River Sheep Bridge  
looking east to large rock outcrop  
which protects east end of bridge.
7. Photo number 1



1. Verde River Sheep Bridge
2. Sec. 35, T.9.N, R.6.E.  
6&SRB&M, Arizona
3. Wm. A. Forbord **NOV 21 1978**
4. June, 1975
5. Tonto National Forest  
102 S. 28th St.  
Phoenix, Az 85002

**JUL 31 1978**

6. Distant view of Verde River Sheep Bridge looking into traditional sheep range within Mazatzals. View to east.
7. Photo number 2



1. Verde River Sheep Bridge
2. Sec. 35, T.9.N, R.6.E.  
6&SRB&M, Arizona
3. Wm. A. Forbord
4. June, 1975
5. Tonto National Forest  
102 S. 28th St.  
Phoenix, Az 85002

NOV 21 1978

JUL 31 1978

6. View of support structure on west  
end of bridge with large cables in  
place; looking east.
7. Photo number 3



1. Verde River Sheep Bridge

2. Sec. 35, T.9.N, R.6.E.

6&SRB&M, Arizona

3. Wm. A. Forbord

NOV 21 1978

4. June, 1975

5. Tonto National Forest

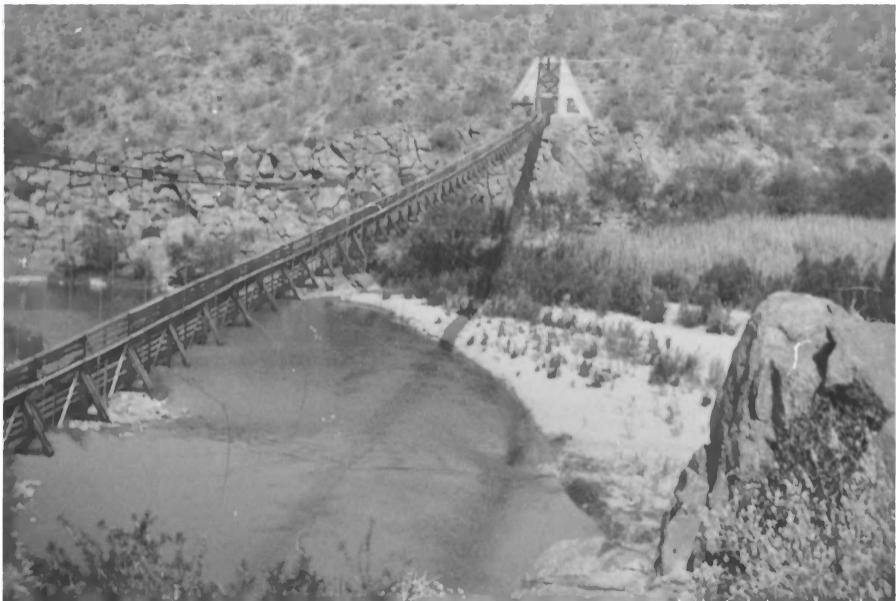
102 S. 28th St.

Phoenix, Az 85002

JUL 31 1978

6. Looking east across bridge from underneath support structure, showing details of interior construction.
7. Photo number 4





1. Verde River Sheep Bridge
2. Sec. 35, T.9.N, R.6.E.  
6&SRB&M, Arizona
3. Wm. A. Forbord
4. June, 1975
5. Tonto National Forest  
102 S. 28th St.  
Phoenix, Az 85002

NOV 21 1978

JUL 31 1978

6. Looking back west across river,  
showing details of external con-  
struction of bridge.
7. Photo number 5



JUL 31 1978

1. VERDE RIVER SHEEP BRIDGE

2. SEC. 35, T. 9 N., R. 6 E.

G & SRB & M, ARIZONA

3. PHOTOGRAPHER UNKNOWN

4. DATE UNKNOWN

5. TONTO NATIONAL FOREST

102 S. 28<sup>TH</sup> ST.

PHOENIX, AZ 85002

NOV 21 1978

6. LOOKING EAST ACROSS BRIDGE FROM  
TOP OF SUPPORT STRUCTURE, SHOWING  
BRIDGE IN USE.

7. PHOTO NUMBER 6.