

United States Department of the Interior  
National Park Service

National Register of Historic Places  
Inventory—Nomination Form

For NPS use only  
received  
date entered

1982

See instructions in *How to Complete National Register Forms*  
Type all entries—complete applicable sections

1. Name

historic Sheridan Main Street Historic District

and/or common

2. Location

street & number Main Street from Burkitt to Mandel Streets,  not for publication

city, town Sheridan vicinity of congressional district

state Wyoming code 56 county Sheridan code 033

3. Classification

<b>Category</b>	<b>Ownership</b>	<b>Status</b>	<b>Present Use</b>	
<input checked="" type="checkbox"/> district	<input type="checkbox"/> public	<input checked="" type="checkbox"/> occupied	<input type="checkbox"/> agriculture	<input type="checkbox"/> museum
<input type="checkbox"/> building(s)	<input checked="" type="checkbox"/> private	<input checked="" type="checkbox"/> unoccupied	<input checked="" type="checkbox"/> commercial	<input type="checkbox"/> park
<input type="checkbox"/> structure	<input type="checkbox"/> both	<input type="checkbox"/> work in progress	<input type="checkbox"/> educational	<input type="checkbox"/> private residence
<input type="checkbox"/> site	<b>Public Acquisition</b>	<b>Accessible</b>	<input checked="" type="checkbox"/> entertainment	<input type="checkbox"/> religious
<input type="checkbox"/> object	<u>n/a</u> in process	<input type="checkbox"/> yes: restricted	<input type="checkbox"/> government	<input type="checkbox"/> scientific
	<u>n/a</u> being considered	<input checked="" type="checkbox"/> yes: unrestricted	<input type="checkbox"/> industrial	<input type="checkbox"/> transportation
		<input type="checkbox"/> no	<input type="checkbox"/> military	<input type="checkbox"/> other:

4. Owner of Property

name Multiple ownership

street & number

city, town \_\_\_\_\_ vicinity of \_\_\_\_\_ state \_\_\_\_\_

5. Location of Legal Description

courthouse, registry of deeds, etc. Sheridan County Courthouse

street & number

city, town Sheridan state Wyoming 82801

6. Representation in Existing Surveys

title Wyoming Recreation Commission has this property been determined eligible?  yes  no

date 1967 (revised 1973)  federal  state  county  local

depository for survey records 1920 Thomes Avenue

city, town Cheyenne, state Wyoming 82002

## 7. Description

<b>Condition</b>		<b>Check one</b>	<b>Check one</b>
<input checked="" type="checkbox"/> excellent	<input type="checkbox"/> deteriorated	<input checked="" type="checkbox"/> unaltered	<input checked="" type="checkbox"/> original site
<input checked="" type="checkbox"/> good	<input type="checkbox"/> ruins	<input checked="" type="checkbox"/> altered	<input type="checkbox"/> moved    date <u>      n/a      </u>
<input type="checkbox"/> fair	<input type="checkbox"/> unexposed		

### **Describe the present and original (if known) physical appearance**

The Sheridan Main Street Historic District comprises architecturally and historically significant buildings dating from the late 19th century to the early 20th century. Few of the district's buildings have undergone major exterior alterations. Most have been renovated to some extent on the interior, especially the first floors; less on the second and third floors. The scale and density of the district is the same as it was originally - a tightly knit core with 1 or 2 story brick or stone buildings sharing outside walls and having individual fronts and rears. Almost all of the front entrances are recessed. The fronts of the buildings are decorated to varying degrees. The sides of the buildings at the intersections and the backs of the buildings tend to be free of ornamentation. Mixed elements from different classical styles are characteristic of the architecture. Primarily commercial in character, the district contains some residential apartments on 2nd and 3rd stories of buildings.

### **BUILDINGS CONTRIBUTING TO THE CHARACTER OF THE DISTRICT:**

#### Main Street between Burkitt Street and Works Street

1. Office and Apartments (107 & 109 S. Main): 1915, 2 stories; first floor - modern glass windows and doors, second floor - original brick painted white, double hung sash windows 1 over 1 light, cornice in 2 sections along front.
2. Keenan Building (101 & 105 S. Main): 1916, 3 stories; stores and apartments; yellow brick, double hung sash windows 8 over 1 lights, smooth stone sills; some dark brown brick receiving arches and some with keystones, brown brick beltcourse with cornice at top. Front faces Works Street with balconies on 2nd and 3rd floors with wrought iron railings; original entrance still exists with iron canopy and leaded glass.
3. Stores (142-150 S. Main): 1910-1912, 1 story; modern glass windows, doors and metal canopy; battered walls; Pueblo Style with flat roof, rounded corners; red tile at bottom of building.
4. Anderson Building (134-138 S. Main): 3 stories; stores and apartments; dark brown brick with smooth stone window sills, 3 over 1 light double hung sash windows, smooth square stones occur in a pattern on facade; quions at corners of 2nd and 3rd stories; architrave above front door. 1923.
5. Store (124 S. Main): 1910, 1 story; red brick with flat roof and cornice at top; modern glass windows and door.

**United States Department of the Interior  
National Park Service**

**National Register of Historic Places  
Inventory—Nomination Form**



Continuation sheet      Description      Item number      7      Page 2

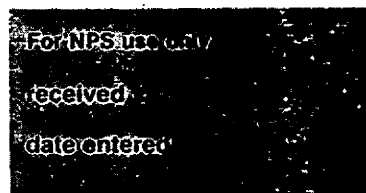
- 6. Offices (116 S. Main): 1920, 1 story; completely false covering of metal canopy and top (tile look alike), stone and stucco bottom. Original material underneath is brick.
- 7. Offices and Stores (104-112 S. Main): ca. 1900, Pueblo Style, half of the building is three stories and half is two stories with the 2nd story recessed. Windows are 2 lights sash type deeply recessed, flat roof, battered walls with rounded corners, pilasters on corners and in-between windows, first floor has wood added and modern doors and windows.

Main Street between Works Street and Loucks Street:

- 8. Shop (49 S. Main): 1926, small two story house set back from the street, unique to the district since it is the only house. Materials are brick and wood; has gabled roof.
- 9. Stores and Offices (37-45 S. Main): 1910, 1 story; modern glass doors and windows, yellow brick with cornice and pediment front is pieced with pilasters where original door was.
- 10. Stores and Offices (19-27 S. Main): 1910, 1 story; modern windows with original lead glass windows above them; dark red brick with simple cornice.
- 11. Store (17 S. Main): 1900-1910, 1 story; modern glass doors and windows, brown brick with no ornamentation except simple cornice.
- 12. Store (1 S. Main): 1883, 1 story wooden structure; original false front still exists with mural of the original streetscape and store; windows - sash, large 1 light all way across front; wood logs end on end attached between window bottoms and ground.
- 13. Kutcher Building (52-54 S. Main): 1922, 2 stories; brown smooth coursed brick; windows double hung sash 1 over 1 lights; brick lentils over windows and smooth stone sills. Cornice between stories and at top of building.
- 14. Store (44 S. Main): 1910, 2 stories; double sets of double hung sash windows 1 over 1 light; yellow brick with brown brick around windows and in a pattern at top of building. Cornice at top.
- 15. Offices (40 S. Main): 1920, 2 stories; two sets of two double hung sash windows, 1 over 1 light; speckled brick with brick sills. First floor has new wooden canopy with sash windows and wooden door.
- 16. Store (38 S. Main): 1918, 1 story; modern glass door and windows and aluminum canopy; original red brick with string course and darker red brick making a rectangular pattern along top.

United States Department of the Interior  
National Park Service

National Register of Historic Places  
Inventory—Nomination Form



Continuation sheet      Description      Item number      7      Page 3

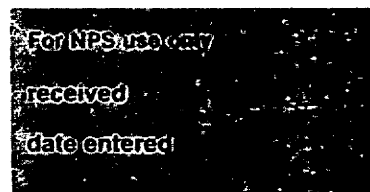
17. Store (32 S. Main): 1920, 1 story red brick with tan brick forming a pattern at top; modern door, windows and canopy.
18. Offices (24 S. Main): 1910, 2 stories; brick painted white with sandstone beltcourse; double hung sash windows 1 over 1 light; flat relieving arches with prominent keystones; continuous arched window-heads above the relieving arches; cornice at top.
19. Office (16 S. Main): 1910, 2 stories; modern metal canopy; red brick with white stone beltcourse and white stone cornice; 3 sash windows - 3 large lights with 3 small on either side; smooth white stone lintels with corner blocks; white inlaid stone designs above windows.
20. Bank of Commerce (4 S. Main): 1925, 2 stories; smooth white blocks of marble facing, only windows and doors have been changed; pilasters between windows; flat roof, complete entablature with blue tile in circle and diamond shapes on the frieze.

Main Street between Loucks Street and Brundage Street:

21. Shops and Offices (1-23 N. Main): 1910, 2 stories; the original building is intact but completely obscured by a plain white plaster facade with wooden canopy; shops below have modern windows and finegrained stone facade. Original structure is red brick.
22. Store (35 N. Main): 1908, 2 stories; brick painted white; 1st story has false stone siding; 2nd has double hung sash windows 4 over 4 lights, cornice, stringcourse and beltcourse and ornate arched windowhead design with arches crossing over each other like a lattice.
23. Store (45 N. Main): 1919, 2 stories; light brown brick with beltcourse, cornice; 3 windows are double hung sash with three protruding keystones above each, 1 over 1 lights with a top light that has a design with calmes and saddle bars.
24. Store (55 N. Main): 1919, 2 stories; front covered with aluminum siding, light gray, with an aluminum canopy; original building can be seen from side - yellow brick, beltcourse, arched windows with brick relieving arches and sandstone sills - double hung sash windows; cornice and cut out cross designs below the cornice.
25. Shops and Offices (28-34 N. Main): 1923, 2 stories; International Style; plain plaster surface without ornamentation; series of small rectangular windows on 2nd floor with brown wood trim; 1st floor has aluminum canopy and modern doors and windows.
26. WYO Theatre and Shops (40-44 N. Main): 1923, 2 stories; International Style; plain plaster surface without ornamentation; no windows on 2nd floor; 1st floor has tiles in terra cotta color and modern glass doors and windows.

**United States Department of the Interior  
National Park Service**

**National Register of Historic Places  
Inventory—Nomination Form**



Continuation sheet      Description      Item number      7      Page 4

27. Store and Offices (50 N. Main): 1902, 3 stories; 1st floor has fiberglass siding with stone trim; modern glass door and windows; top stories are red brick with white stone lentils and sills; cornice at top; windows are 1 over 1 light, double hung sash.

Main Street between Brundage Street and Grinnell Street:

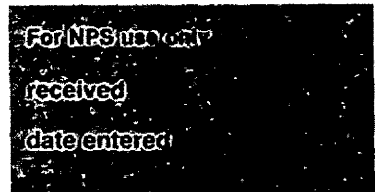
28. Store and Office (109 N. Main): 1914, 2 stories; first story has large metal canopy; modern glass doors and windows; second story is pale yellow brick with double hung windows with architraves above them; entablature at top of building; quions.
29. Stores (117-121 N. Main): 1919, 2 stories; brick with stone siding covering front; original cornice shows at top; two modern stained glass windows on second story.
30. Shop (123 N. Main): 1919, 1 story; aluminum siding and canopy; original is brick but none of it shows.
31. Shop (145 N. Main): 1910, 1 story; brick at bottom and plaster at top; metal canopy in between the two materials.
32. Mint Bar (151 N. Main): 1910, 1 story; wood log from canopy down, red brick above with a mural of a western scene; corner entrance with wood log pilasters; canopy is wooden.

Main Street between Brundage Street and Alger Street - West Side:

33. Mission Bar and Shop (112 & 120 N. Main): 1910, part is 2 stories and part is 1 story; was Sheridan's original courthouse; displays many elements of Richardsonian Romanesque style; brick with rough stone beltcourse and edging around massive arched entry and windows; roof has terra cotta tiles around edge; arched windows are recessed with transoms.
34. Shop and Offices (122-126 N. Main): 1892, 2 stories; was at one time a bank; many elements of the Beaux Arts Classicism style; red brick with stone trim around windows; projecting pavilion entrance with ornate columns faces the street at an angle; arched windows on 1st floor, straight double hung sash windows on 2nd floor; beltcourse; ornate cornice is topped by a balustrade; 1st floor is as original and steps are now crumbling.
35. Store (130 N. Main): 1910, 2 stories; 1st story has fiberglass siding; 2nd story is brick with 2 sets double hung sash arched windows with decorative arched brickwork above, beltcourse and decorative brickwork at top.

United States Department of the Interior  
National Park Service

National Register of Historic Places  
Inventory—Nomination Form

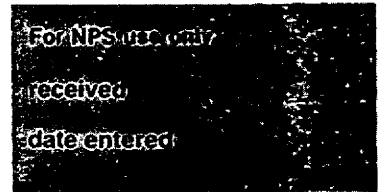


Continuation sheet    Description    Item number    7    Page 5

- 36. Shop (134 N. Main): 1910, 2 stories; 1st floor has fiberglass siding and aluminum canopy; 2nd has beltcourse, is brick with ornate cornice and molding at top of building. One lintel and sill run above and below windows across entire building.
- 37. Palace Cafe (138 N. Main): 1910, 2 stories; has been the Palace Cafe since building was built; 1st floor has had wood siding added; 2nd floor is simple red brick with little ornamentation; 2 double hung sash windows 1 over 1 light.
- 38. Shop (142 N. Main): 1910, 2 stories; 1st floor has had wood siding added; 2nd still shows red brick with stone lentils and sills; double hung sash windows, 1 over 1 light, ornate cornice.
- 39. Shop (150 N. Main): ca. 1910, 2 stories; 1st floor has aluminum siding and canopy added, 2nd is brick with 3 large windows, 2 over 1 light, brick lentils and sills; decorative brickwork at top.
- 40. Shops (160-166 N. Main): 1902, 2 stories; elements of the Beaux Arts style; row of windows on second story have ornate moldings and are enframed by columns; pedimented ornate entablature at top of building; stone is the building material.
- 41. Store and Offices (170-176 N. Main): 1900, 2 stories; modern wood shingle canopy; original structure is Romanesque in style; rough stone with architraves above double hung sash windows and cornice at top.
- 42. Store (180 N. Main): 1895; 2 stories; brick building with belt-course; 5 double hung sash windows 1 over 1 lights with middle three windows forming a point; cornice at top.
- 43. Shop (184 N. Main): 1918, 2 stories; originally red brick; now completely covered with wood shingles and wood shingled canopy.
- 44. Shops (190-194 N. Main): 1901, 2 stories; rough stone with row of double hung sash windows; simple cornice and pediment at top; original entry still exists and is arched.
- 45. Barr Building (200-206 N. Main): 1901, 2 stories; original recessed entryway has arch with prominent keystone; brick with beltcourse; 8 double hung sash arched windows with large stone lentils. Cornice and two pediments at top; low relief sculptural ornamentation at top below cornice.
- 46. Shops (208-214 N. Main): ca. 1900, 2 stories; 1st floor has brick and wood siding; 2nd is tan brick; beltcourse, 7 double hung sash windows, ornate cornice.
- 47. Stores and Apartments (216-222 N. Main): 1903, 2 stories; 1st has brick siding; 2nd is tan brick; 8 arched windows; original arched entryway; simple cornice.

United States Department of the Interior  
National Park Service

National Register of Historic Places  
Inventory—Nomination Form



Continuation sheet

Description

Item number 7

Page 6

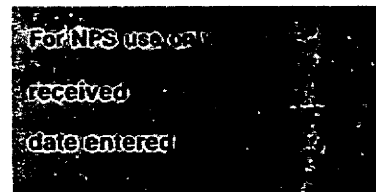
48. Store (226 N. Main): 1910, 2 stories; 1st has brick and modern windows and door; elements of the Beaux Arts style; row of windows on second story has ornate moldings and windows are enframed by columns; pedimented ornate entablature at top.
49. Stores (234-250 N. Main): 1910, 2 stories; 1st has aluminum siding added; 2nd is tan brick; beltcourse; double hung sash windows; ornate cornice with pediment on roof.
50. Store (252 N. Main): 1911, 2 stories, 1st has tile with modern doors and windows; 2nd is tan brick; beltcourse; 4 windows which are double hung sash; simple cornice with ornamental sculptural relief.
51. Store and Rainbow Bar (256 & 264 N. Main): 1910, 2 stories, brick with stone beltcourse and lentils and sills; double hung sash windows; simple cornice; original entryway was at the corner of the intersection.

Main Street between Grinnell Street and Alger Street - East Side:

52. Stores (201-219 N. Main): 1919, 1 story; modern glass door and windows; brick painted white with a simple decoration in brick at the top of the building.
53. Shops (221-225 N. Main): 1919, 1 story; brick painted dark red with brick decoration at top; modern glass doors and windows.
54. Shop (227 N. Main): 1919, 1 story; none of the original shows; facade covered with shingled canopy and plaster and wood siding.
55. Stores and Offices (237 N. Main): 1910, 3 stories; many Georgian elements; front is tan brick and the rest is red brick; architrave above entrance; beltcourse; entablature at top and a balustrade; 3 Palladian or Venetian windows on 2nd floor with architraves; pilasters at entrance and edges of building.
56. Shops and Offices (241-251 N. Main): 1910, 2 stories; 1st story has modern glass doors and windows; 2nd has 8 double hung sash windows with stone lentils and sills; yellow brick with cornice.
57. Office (267 N. Main): ca. 1910, 1 story; brick with wood siding; none of original building shows.

**United States Department of the Interior  
National Park Service**

**National Register of Historic Places  
Inventory—Nomination Form**



Continuation sheet

Description

Item number 7

Page 7

Main Street between Alger Street and Mandel Street:

58. Helvey Hotel and Stores (301-321 N. Main): 1907, 2 stories; elaborate and massive stone building, double hung sash windows with stone lentils and sills; 3 of the original entrances are still intact - arched with polished stone columns and arched windows on the 1st floor; foliated forms decorate the beltcourse columns and pilasters.
59. Vacant (usually is a store) (333 N. Main): 1915, 1 story; brick with wood siding; little of the original building shows.
60. Crescent Hotel and Offices (306 N. Main): 1908, 3 stories; tan brick; 1st floor has fiberglass siding with some of the original stained glass windows showing above the modern newer windows; 2nd and 3rd floors have double hung sash windows with 1/3 over 2/3 lights; entablature at top of building and beltcourse.
61. Store (316 N. Main): 1915, 2 stories; brown brick with 4 double hung sash windows; simple brick design across top; 1st floor has modern door and windows.
62. Offices (330-332 N. Main): 1923, 1 story; tan brick with little ornamentation except a simple cornice; modern glass door and windows.
63. Store (334 N. Main): 1923, 1 story; simple red brick with decoration in tan brick at top.
64. Stores and vacant hotel (348-350 N. Main): 1907; 2 stories; brick; original entrance still there - pilasters on either side of entrance; 8 double hung sash windows with stone lentils and sills; simple brick decoration at top.
65. Restaurant and Bar (366 N. Main): 1900, 1 story; brick painted red; no ornamentation except simple cornice.

\*See Addendum, Item #7, Page 8



**United States Department of the Interior  
National Park Service**

**National Register of Historic Places  
Inventory—Nomination Form**

For NPS use only  
received  
date entered

Continuation sheet      Description      Item number      7      Page      8

---

CONTRIBUTING AND NON-CONTRIBUTING  
STRUCTURES WITHIN THE SHERIDAN MAIN  
STREET HISTORIC DISTRICT

Main Street between Burkitt and Works Streets - east side of street

- |    |                       |                  |
|----|-----------------------|------------------|
| 1. | 121 South Main        | Non-contributing |
| 2. | Lots 4 & 5 South Main | Non-contributing |
| 3. | 107-109 South Main    | Contributing     |
| 4. | 101-105 South Main    | Contributing     |

Main Street between Burkitt and Works Streets - west side of street

- |    |                          |                  |
|----|--------------------------|------------------|
| 1. | 142-150 South Main       | Contributing     |
| 2. | 134-138 South Main       | Contributing     |
| 3. | 124 South Main           | Contributing     |
| 4. | 116 South Main           | Non-contributing |
| 5. | 104, 106, 112 South Main | Contributing     |

Main Street between Works and Loucks - east side of street

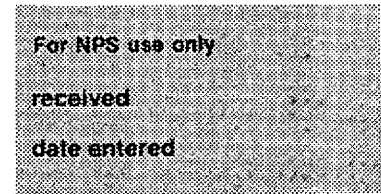
- |    |                  |              |
|----|------------------|--------------|
| 1. | 49 South Main    | Contributing |
| 2. | 37-45 South Main | Contributing |
| 3. | 19-27 South Main | Contributing |
| 4. | 17 South Main    | Contributing |
| 5. | 1 South Main     | Contributing |

Main Street between Works and Loucks - west side of street

- |    |                  |              |
|----|------------------|--------------|
| 1. | 52-54 South Main | Contributing |
| 2. | 44 South Main    | Contributing |

**United States Department of the Interior  
National Park Service**

**National Register of Historic Places  
Inventory—Nomination Form**



Continuation sheet      Description      Item number      7      Page      9

---

- 3. 40 South Main      Contributing
- 4. 38 South Main      Contributing
- 5. 32 South Main      Contributing
- 6. 24 South Main      Contributing
- 7. 16 South Main      Contributing
- 8. 4 South Main      Contributing

Main Street between Loucks and Brundage Streets - east side of street

- 1. 1-23 North Main      Non-contributing
- 2. 35 North Main      Contributing
- 3. 45 North Main      Contributing
- 4. 55 North Main      Non-contributing

Main Street between Loucks and Brundage Streets - west side of street

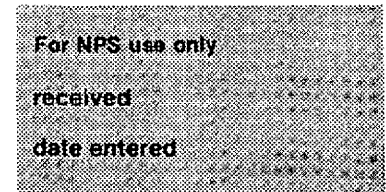
- 1. 2 North Main      Non-contributing
- 2. 28-34 North Main      Contributing
- 3. 40-44 North Main      Contributing
- 4. 50 North Main      Contributing

Main Street between Brundage and Grinnell Streets - east side of street

- 1. 109 North Main      Contributing
- 2. 117 North Main      Non-contributing
- 3. 123 North Main      Non-contributing
- 4. 129 North Main      Contributing
- 5. 135-141 North Main      Non-contributing
- 6. 145 North Main      Contributing
- 7. 151 North Main      Contributing
- 8. 159 North Main      Non-contributing

**United States Department of the Interior  
National Park Service**

**National Register of Historic Places  
Inventory—Nomination Form**



Continuation sheet    Description    Item number    7    Page    10

Main Street between Brundage and the alley - west side of street

- |    |                    |                  |
|----|--------------------|------------------|
| 1. | 104 North Main     | Non-contributing |
| 2. | 112-120 North Main | Contributing     |
| 3. | 122-126 North Main | Contributing     |
| 4. | 130 North Main     | Contributing     |
| 5. | 134 North Main     | Contributing     |
| 6. | 138 North Main     | Contributing     |
| 7. | 142 North Main     | Contributing     |
| 8. | 150 North Main     | Contributing     |

Main Street between Grinnell and Alger Streets + east side of street

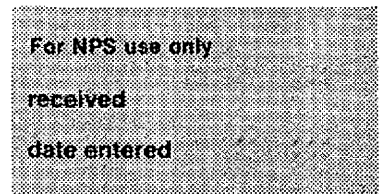
- |    |                    |                  |
|----|--------------------|------------------|
| 1. | 201-219 North Main | Contributing     |
| 2. | 221-225 North Main | Contributing     |
| 3. | 227 North Main     | Non-contributing |
| 4. | 237 North Main     | Contributing     |
| 5. | 241-251 North Main | Contributing     |
| 6. | 267 North Main     | Non-contributing |

Main Street between the alley and Alger Street - west of street

- |    |                    |                  |
|----|--------------------|------------------|
| 1. | 160-166 North Main | Contributing     |
| 2. | 170-176 North Main | Contributing     |
| 3. | 180 North Main     | Contributing     |
| 4. | 184 North Main     | Non-contributing |
| 5. | 190-194 North Main | Contributing     |
| 6. | 200-206 North Main | Contributing     |
| 7. | 208-214 North Main | Contributing     |

**United States Department of the Interior  
National Park Service**

**National Register of Historic Places  
Inventory—Nomination Form**



Continuation sheet      Description      Item number      7      Page      11

---

- 8. 216-222 North Main      Contributing
- 9. 226 North Main      Contributing
- 10. 234-250 North Main      Contributing
- 11. 252 North Main      Contributing
- 12. 256-264 North Main      Contributing

Main Street between Alger and Mandel Streets - east side of street

- 1. 301-321 North Main      Contributing
- 2. 333 North Main      Non-contributing
- 3. 437 North Main      Non-contributing

Main Street between Alger and Mandel Streets - west side of street

- 1. 302-306 North Main      Contributing
- 2. 316 North Main      Contributing
- 3. 330-332 North Main      Contributing
- 4. 334 North Main      Contributing
- 5. 340 North Main      Non-contributing
- 6. 348-350 North Main      Contributing
- 7. 366 North Main      Contributing

# 8. Significance

Period	Areas of Significance—Check and justify below			
<input type="checkbox"/> prehistoric	<input type="checkbox"/> archeology-prehistoric	<input checked="" type="checkbox"/> community planning	<input type="checkbox"/> landscape architecture	<input type="checkbox"/> religion
<input type="checkbox"/> 1400-1499	<input type="checkbox"/> archeology-historic	<input type="checkbox"/> conservation	<input type="checkbox"/> law	<input type="checkbox"/> science
<input type="checkbox"/> 1500-1599	<input type="checkbox"/> agriculture	<input checked="" type="checkbox"/> economics	<input type="checkbox"/> literature	<input type="checkbox"/> sculpture
<input type="checkbox"/> 1600-1699	<input checked="" type="checkbox"/> architecture	<input type="checkbox"/> education	<input type="checkbox"/> military	<input checked="" type="checkbox"/> social/
<input type="checkbox"/> 1700-1799	<input type="checkbox"/> art	<input type="checkbox"/> engineering	<input type="checkbox"/> music	<input type="checkbox"/> humanitarian
<input checked="" type="checkbox"/> 1800-1899	<input checked="" type="checkbox"/> commerce	<input type="checkbox"/> exploration/settlement	<input type="checkbox"/> philosophy	<input checked="" type="checkbox"/> theater
<input checked="" type="checkbox"/> 1900-	<input type="checkbox"/> communications	<input type="checkbox"/> industry	<input type="checkbox"/> politics/government	<input type="checkbox"/> transportation
		<input type="checkbox"/> invention		<input type="checkbox"/> other (specify)

**Specific dates** 1882-1930      **Builder/Architect** n/a

**Statement of Significance (In one paragraph)**

Sheridan was platted as a town by John D. Loucks in 1882. Loucks was said to have platted the town on the back of a sheet of wrapping paper by the tallow of a candle. Once the town was platted, it was then approved and incorporated in 1884. By the end of 1884, most of the lots of the original forty acre plat of the Sheridan townsite were occupied. As the Main Street Historic District was part of the "original town" and the survey maps still list the southern part of Main Street as "original town," one can easily see that Main Street grew to the north as the town increased in population. In 1890, Sheridan had a population of 281 and by 1900 there had been a 455% increase to 1559 with the coming of the railroad, the opening of many coal mines in the vicinity of Sheridan, the arrival of townspeople, and the settling of ranchlands. The Big Horn Mountain region of northern Wyoming was being settled at a rapid pace with Sheridan its epicenter. By 1907, the City of Sheridan had a population of 4937, which made it eligible to become a city of the First Class. Sheridan as a business community was thriving during the first twenty years of the twentieth century and Main Street was the center for trade, commerce, and government for the city and the county.\*

\*See Addendum

## 9. Major Bibliographical References

See Addendum, Item #9

## 10. Geographical Data

Acreeage of nominated property 16.44

Quadrangle name Sheridan, Wyoming

Quadrangle scale 1:24,000

### UMT References

A 

1	3	3	4	5	3	2	0	4	9	6	2	5	8	0
Zone	Easting			Northing										

B 

1	3	3	4	5	4	1	8	4	9	6	2	5	6	6
Zone	Easting			Northing										

C 

1	3	3	4	5	2	8	8	4	9	6	1	8	9	5
Zone	Easting			Northing										

D 

1	3	3	4	5	3	8	4	4	9	6	1	8	8	1
Zone	Easting			Northing										

E 

Zone	Easting			Northing										

F 

Zone	Easting			Northing										

G 

Zone	Easting			Northing										

H 

Zone	Easting			Northing										

### Verbal boundary description and justification

*See 10.1*

### List all states and counties for properties overlapping state or county boundaries

state N/A code N/A county N/A code N/A

state N/A code N/A county N/A code N/A

## 11. Form Prepared By

name/title Molly Mooney and Christy Love

organization private citizens date March 16, 1981

street & number Box 398 Box 40 telephone 307-672-3068 & 307-674-7271

city or town Sheridan Big Horn state Wyoming 82801 & 82833

## 12. State Historic Preservation Officer Certification

The evaluated significance of this property within the state is:

national  state  local

As the designated State Historic Preservation Officer for the National Historic Preservation Act of 1966 (Public Law 89-665), I hereby nominate this property for inclusion in the National Register and certify that it has been evaluated according to the criteria and procedures set forth by the National Park Service.

State Historic Preservation Officer signature *Jan Harrison*

title State Historic Preservation Officer date September 28, 1982

For NPS use only

I hereby certify that this property is included in the National Register

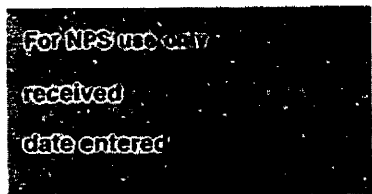
*Linda McClelland* date 11/9/82  
Keeper of the National Register

Attest: \_\_\_\_\_ date \_\_\_\_\_

Chief of Registration

**United States Department of the Interior  
National Park Service**

**National Register of Historic Places  
Inventory—Nomination Form**



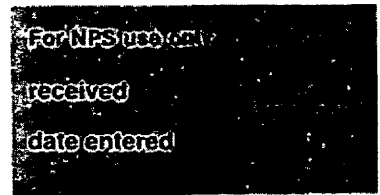
Continuation sheet      Significance-Addendum Item number      8      Page      2

Sheridan Main Street is a well-preserved business district with a majority of its buildings constructed in the 1910 and 1920 periods. Before that time, Main Street of Sheridan had consisted of frame, false-front buildings, typical of pre-twentieth century boom town architecture. As Sheridan grew tremendously after the turn of the century and as it held the position of county seat for Sheridan County, it was becoming a thriving center for local mining interests as well as being its agricultural hub. Main Street buildings were being replaced by more sturdy structures of brick and stone. The look of Main Street Sheridan is much the same today as it was back in the 1910's and 1920's. Main Street was and still is the center of the Town of Sheridan, and is the central business district as it was at the turn of the century.

Most of the buildings now house different businesses, but very few have been torn down. Most of the buildings are two-story structures with windows looking onto the Main Street area. Many of the buildings have original detail of stone and iron, which was a typical architectural touch to buildings of this period. One South Main is the one remaining false-front, frame building. The more modest businesses of Main Street were housed in one story brick buildings, the skyline is not uniform, but it is the same as seventy years ago. Many of the original fronts of the buildings have been covered with modern facades, such as 104 North Main, but the original fronts are still intact behind these coverings. Sheridan's commerce is still situated in the Main Street District because it is the central location for the banking, trade and government of the Town and County of Sheridan. The uniformity of the architecture of the Main Street District evokes the style of seventy years ago and it would be difficult to find many communities which have retained this early 20th century style.

United States Department of the Interior  
National Park Service

National Register of Historic Places  
Inventory—Nomination Form



Continuation sheet      Addendum      Item number      9      Page      1

MAJOR BIBLIOGRAPHICAL REFERENCES

Larson, T.A., History of Wyoming. Lincoln: University of Nebraska Press, 1965.

American Association of University Women: The Sheridan Branch, Historical Sheridan and Sheridan County, Sheridan, Wyoming: Sheridan Chamber of Commerce; Second Printing, 1970.

Midwest Review: "Marvelous Sheridan County," Casper, Wyoming. October, 1926.

Pictorial Sheridan. Reproduced in 1976 by Bank of Commerce, Sheridan, Wyoming.

Abstracts of Title to Property - Located in Sheridan; Sheridan County Courthouse, County Clerk's Office. Part of Original Township, Blocks 2,3,8,9,12,13,18,19 on Main Street; all of Thurmond Addition 1st; part of Grinnell Addition blocks 3,7,8,12 on Main Street. Blumenson, John J-G., Identifying American Architecture, American Association for State and Local History, Nashville, 1977.

Sheridan City Directory, 1979. R.L. Polk and Company, Publishers, Kansas City, Missouri, 1979.

Weinberg, Nathan. Preservation in American Towns and Cities, Westview Press, Inc., Boulder, Colorado, 1979.

Poppeliers, John, Chambers, S. Allen, Schwartz, Nancy B. What Style Is It?, The Preservation Press of the National Trust for Historic Preservation, Fourth Printing, 1979.

Compiled Ordinances of Sheridan, Wyoming: 1913.

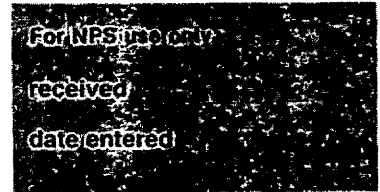
The Sheridan Post. Tuesday, July 16, 1907 - "Sheridan - City of First Class."

The Sheridan Press. May 10, 1975 - "Sheridan's beginning - 93 years old today."



**United States Department of the Interior  
National Park Service**

**National Register of Historic Places  
Inventory—Nomination Form**



Continuation sheet      Addendum      Item number      10      Page      1

---

VERBAL BOUNDARY DESCRIPTION AND  
JUSTIFICATION

The boundaries of the Sheridan Main Street Historic District are Main Street at Burkitt continuing to the north and ending where Main Street is crossed by Mandel. On the survey maps, this is described as the part of the Original Township, Blocks 2,3,8,9,12,13,18,19 which are on Main Street; all of the Thurmond Addition 1st; and the part of the Grinnell Addition, Blocks 3,7,8,12 which are located on Main Street. These boundaries were drawn as there are the densest concentration of buildings of historic importance which made up the business community of the beginning of the twentieth century.

United States Department of the Interior  
 Heritage Conservation and Recreation Service  
**National Register of Historic Places  
 Inventory—Nomination Form**

For HCRS use only

received

date entered

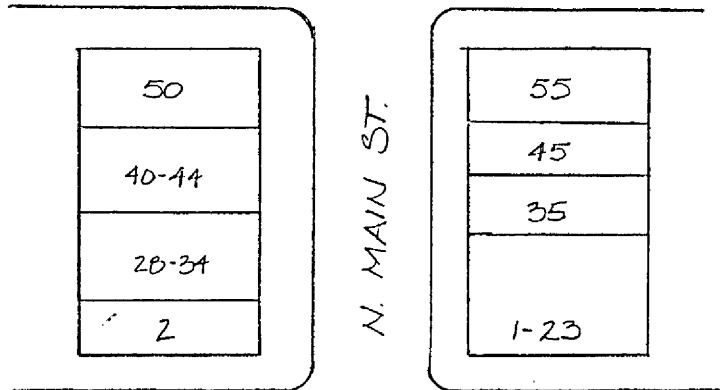
Continuation sheet

Item number

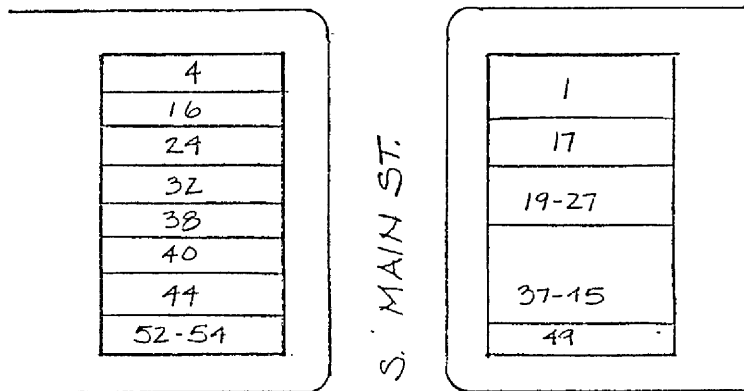
Page



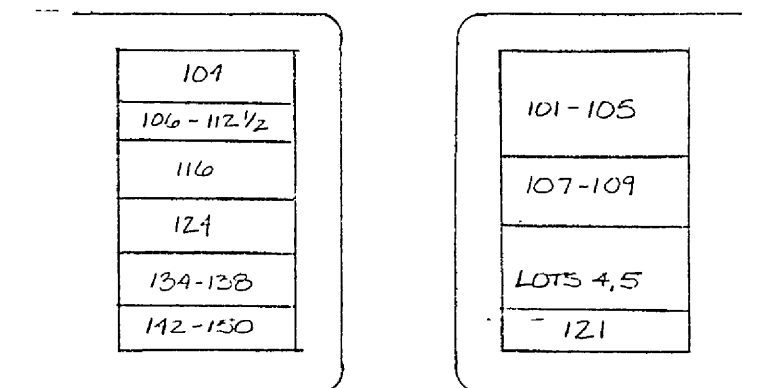
BRUNDAGE ST.



LOUCKS ST.



WORKS ST.



BURKITT ST.

United States Department of the Interior  
National Park Service

National Register of Historic Places  
Continuation Sheet

Section number \_\_\_\_\_ Page \_\_\_\_\_

SUPPLEMENTARY LISTING RECORD

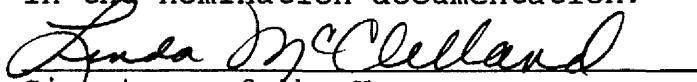
NRIS Reference Number: 82001837 Date Listed: 11/09/82

Property Name: Sheridan Main Street Historic District

County: Sheridan State: Wyoming

none  
Multiple Name

-----  
This property is listed in the National Register of Historic Places in accordance with the attached nomination documentation subject to the following exceptions, exclusions, or amendments, notwithstanding the National Park Service certification included in the nomination documentation.

  
Signature of the Keeper

April 24, 1996  
Date of Action

=====  
Amended Items in Nomination:

Section 7. Description/ Sketch Map

The building at 55 North Main Street is hereby reclassified as a building contributing to the significance of the historic district. At the time of listing, the condition of the building's principal facade was obscured by aluminum sheathing. The sheathing has recently been removed revealing as intact the upper stories of the early twentieth century facade with a corbelled brick cornice, beltcourse, arched windows with brick relieving arches and stone sills, and corner quoining.

-----  
Sheila Bricker-Wade, National Register coordinator, Wyoming State Historic Preservation Office, was notified of this amendment on April 24, 1996.

-----  
**DISTRIBUTION:**

National Register property file  
Nominating Authority (without nomination attachment)

United States Department of the Interior  
Heritage Conservation and Recreation Service

National Register of Historic Places  
Inventory—Nomination Form

For HCERS use only  
received  
date entered

Continuation sheet

Item number

Page

