



Anderson - Carnegie Library

College of Emporia

Emporia, Kansas

n.d.

Kansas State Historical Society

South Facade, East elevation, NW view

1 of 19



Anderson - Carnegie Library

College of Emporia

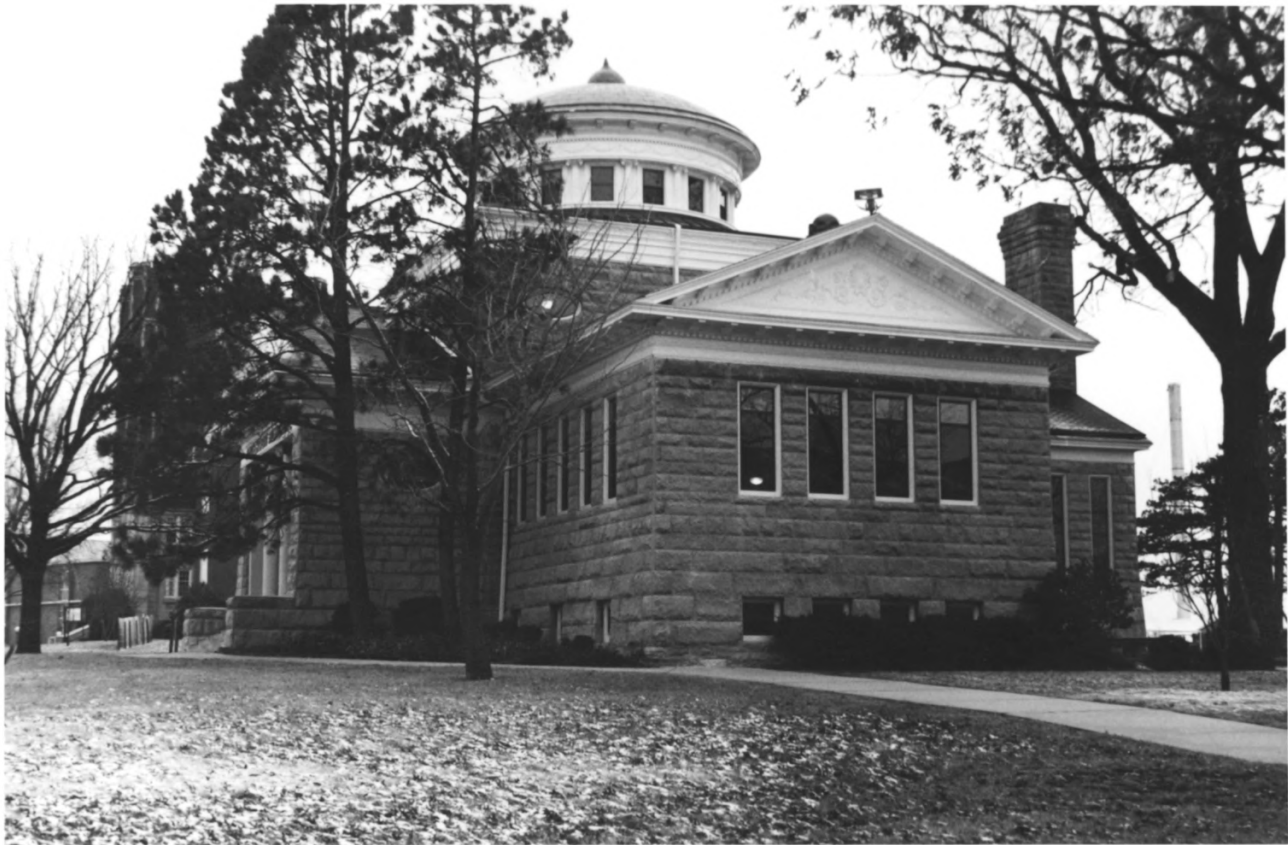
Emporia, Kansas

n.d.

Kansas State Historical Society

South Facade, East elevation, NW view

2 of 19



Anderson - Carnegie Library

Way College of Emporia

Emporia, Kansas

Martha Hagedorn

December 1986  
Kansas State Historical Society

South Facade, East elevation, NW view

3 of 19



Anderson - Carnegie Library

Way College of Emporia

Emporia, Kansas

Martha Hagedorn

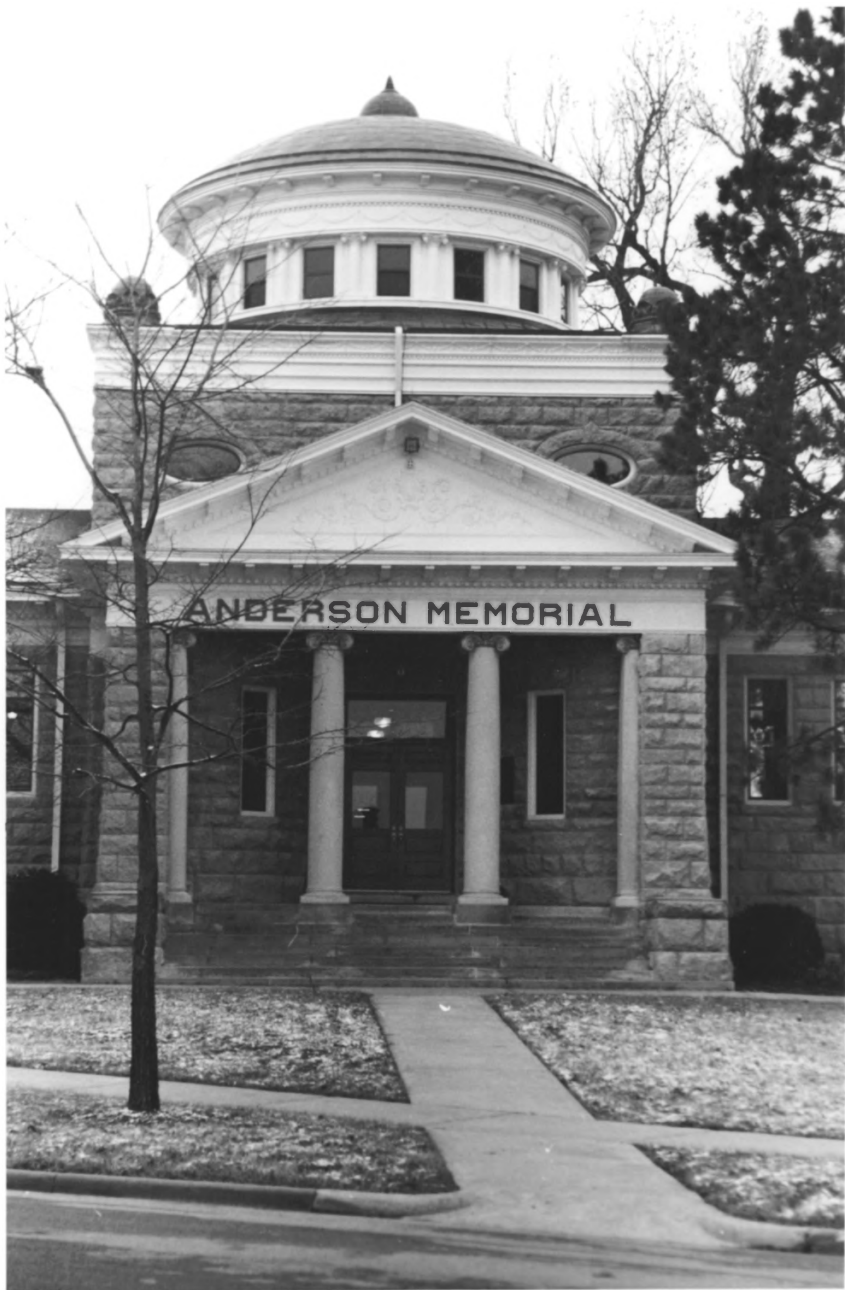
December, 1986

Kansas State historical Society

South Facade, North view

4 of 19





Anderson - Carnegie Library

Way College of Emporia

Emporia, Kansas

Martha Hagedorn

December, 1986

Kansas State historical Society

South Facade, North view

5 of 19



Anderson - Carnegie Library

Way College of Emporia

Emporia, Kansas

Martha Hagedorn

December, 1986

Kansas State historical Society

South Facade, West elevation, NE view

6 of 19



Anderson - Carnegie Library

Way College of Emporia

Emporia, Kansas

Martha Hagedorn

December, 1986

Kansas State historical Society

South Facade, West elevation, NE view

7 of 19



Anderson - Carnegie Library

Way College of Emporia

Emporia, Kansas

Martha Hagedorn

December, 1986

Kansas State historical Society

West elevation, East view

8 of 19





Anderson - Carnegie Library

Way College of Emporia

Emporia, Kansas

Martha Hagedorn

December, 1986

Kansas State historical Society

West & North elevations, SE view

9 of 19



Anderson - Carnegie Library

Way College of Emporia

Emporia, Kansas

Martha Hagedorn

December, 1986

Kansas State historical Society

North & East elevations, SW view

10 of 19



Anderson - Carnegie Library

Way College of Emporia

Emporia, Kansas

Martha Hagedorn

December, 1986

Kansas State historical Society

East elevation, West view

11 of 19

THE  
JOHN B. ANDERSON  
MEMORIAL LIBRARY.

ERECTED A. D. 1901  
BY  
ANDREW CARNEGIE  
IN GRATEFUL REMEMBRANCE  
OF  
MR. ANDERSON  
WHO OPENED HIS OWN  
PRIVATE LIBRARY  
FOR THE WORKING BOYS  
OF  
ALLECHENY CITY,  
OF WHOM  
MR. CARNEGIE WAS ONE.

Anderson - Carnegie Library

Way College of Emporia

Emporia, Kansas

Martha Hagedorn

December, 1986

Kansas State historical Society

South Facade, NE view

12 of 19





Anderson - Carnegie Library

College of Emporia

Emporia, Kansas

c. 1921

Kansas State historical Society

East view, First Level

13 of 19



Anderson - Carnegie Library

Way College of Emporia

Emporia, Kansas

Martha Hagedorn

December, 1986

Kansas State historical Society

West view, First Level

14 of 19



Anderson - Carnegie Library

Way College of Emporia

Emporia, Kansas

Martha Hagedorn

December, 1986

Kansas State historical Society

Southeast view, First Level

15 of 19



Anderson - Carnegie Library

Way College of Emporia

Emporia, Kansas

Martha Hagedorn

December, 1986

Kansas State historical Society

East view, First Level

16 of 19





Anderson - Carnegie Library

Way College of Emporia

Emporia, Kansas

Martha Hagedorn

December, 1986

Kansas State historical Society

North view, First Level

17 of 19



Anderson - Carnegie Library  
Way College of Emporia  
Emporia, Kansas  
Martha Hagedorn  
December, 1986  
Kansas State historical Society  
West view, Second Level  
18 of 19



Anderson - Carnegie Library

Way College of Emporia

Emporia, Kansas

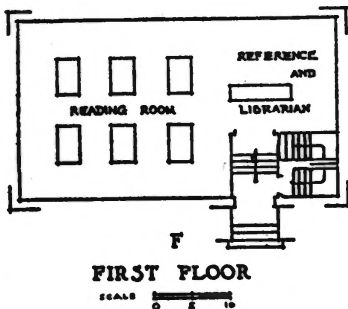
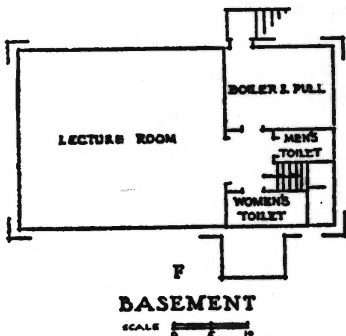
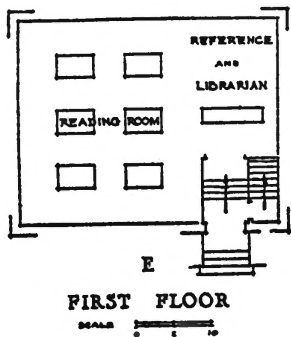
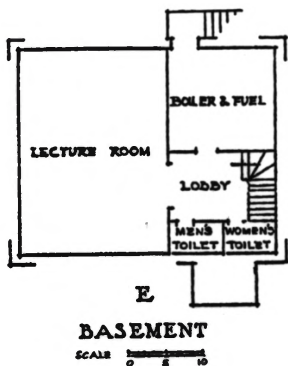
Martha Hagedorn

December, 1986

Kansas State historical Society

North view, Second Level

19 of 19

**NOTE**

*Elevations of plans submitted for approval should clearly show the floor and ceiling lines of basement and main floor, and the natural and artificial grade lines. Floor plans should show, clearly designated, all roof supports and similar obstructions of the accommodation.*

Carnegie Corporation of New York

Sample Building Plans as presentefd  
in James Bertram's Notes on Library  
Buildings from George Bobinski's  
Carnegie Libraries

c. 1911

Kansas State Historical Society

3 of 3