



United States Department of the Interior  
National Park Service

# National Register of Historic Places Registration Form

This form is for use in nominating or requesting determinations for individual properties and districts. See instructions in National Register Bulletin, *How to Complete the National Register of Historic Places Registration Form*. If any item does not apply to the property being documented, enter "N/A" for "not applicable." For functions, architectural classification, materials, and areas of significance, enter only categories and subcategories from the instructions. Place additional certification comments, entries, and narrative items on continuation sheets if needed (NPS Form 10-900a).

## 1. Name of Property

historic name Walnut Park School

other names/site number N/A

## 2. Location

street & number 5314 Riverview Boulevard / 5814 Thekla Avenue N/A not for publication

city or town St. Louis N/A vicinity

state Missouri code MO county Independent City code 510 zip code 63120

## 3. State/Federal Agency Certification

As the designated authority under the National Historic Preservation Act, as amended,  
I hereby certify that this  nomination \_\_\_ request for determination of eligibility meets the documentation standards for registering properties in the National Register of Historic Places and meets the procedural and professional requirements set forth in 36 CFR Part 60.  
In my opinion, the property  meets \_\_\_ does not meet the National Register Criteria. I recommend that this property be considered significant at the following level(s) of significance:  
\_\_\_ national \_\_\_ statewide  local

Mark A. Miles FEBRUARY 27, 2013  
Signature of certifying official/Title Mark A. Miles, Deputy SHPO Date

Missouri Department of Natural Resources  
State or Federal agency/bureau or Tribal Government

In my opinion, the property \_\_\_ meets \_\_\_ does not meet the National Register criteria.

Signature of commenting official Date

Title State or Federal agency/bureau or Tribal Government

## 4. National Park Service Certification

I hereby certify that this property is:  
 entered in the National Register \_\_\_ determined eligible for the National Register  
\_\_\_ determined not eligible for the National Register \_\_\_ removed from the National Register  
\_\_\_ other (explain) \_\_\_\_\_

For Edson H. Beall 4-23-13  
Signature of the Keeper Date of Action

Walnut Park School  
St. Louis, Missouri, Public Schools of William B. Ittner  
Name of Property

St. Louis (Independent  
City), Missouri  
County and State

**5. Classification**

**Ownership of Property**  
(Check as many boxes as apply.)

- private
- public - Local
- public - State
- public - Federal

**Category of Property**  
(Check only one box.)

- building(s)
- district
- site
- structure
- object

**Number of Resources within Property**  
(Do not include previously listed resources in the count.)

Contributing	Noncontributing	
1	0	buildings
		district
		site
0	1	structure
0	2	object
1	3	<b>Total</b>

**Name of related multiple property listing**  
(Enter "N/A" if property is not part of a multiple property listing)

St. Louis, Missouri, Public Schools of William B. Ittner

**Number of contributing resources previously listed in the National Register**

0

**6. Function or Use**

**Historic Functions**  
(Enter categories from instructions.)

EDUCATION/School

LANDSCAPE/Street furniture/object

**Current Functions**  
(Enter categories from instructions.)

VACANT/NOT IN USE

LANDSCAPE/Street furniture/object

**7. Description**

**Architectural Classification**  
(Enter categories from instructions.)

LATE 19<sup>TH</sup> AND 20<sup>TH</sup> CENTURY REVIVALS/  
Tudor Revival

**Materials**  
(Enter categories from instructions.)

foundation: CONCRETE

walls: BRICK

roof: STONE/Slate

other: STONE/Limestone

Walnut Park School  
St. Louis, Missouri, Public Schools of William B. Ittner  
Name of Property

St. Louis (Independent  
City), Missouri  
County and State

**8. Statement of Significance**

**Applicable National Register Criteria**

(Mark "x" in one or more boxes for the criteria qualifying the property for National Register listing.)

- A Property is associated with events that have made a significant contribution to the broad patterns of our history.
- B Property is associated with the lives of persons significant in our past.
- C Property embodies the distinctive characteristics of a type, period, or method of construction or represents the work of a master, or possesses high artistic values, or represents a significant and distinguishable entity whose components lack individual distinction.
- D Property has yielded, or is likely to yield, information important in prehistory or history.

**Criteria Considerations**

(Mark "x" in all the boxes that apply.)

Property is:

- A Owned by a religious institution or used for religious purposes.
- B removed from its original location.
- C a birthplace or grave.
- D a cemetery.
- E a reconstructed building, object, or structure.
- F a commemorative property.
- G less than 50 years old or achieving significance within the past 50 years.

**Areas of Significance**

ARCHITECTURE

**Period of Significance**

1909

**Significant Dates**

1909

**Significant Person**

(Complete only if Criterion B is marked above.)

N/A

**Cultural Affiliation**

N/A

**Architect/Builder**

Ittner, William B. (Architect)

Wall Brothers Construction (Builder)

**9. Major Bibliographical References**

**Bibliography** (Cite the books, articles, and other sources used in preparing this form.)

**Previous documentation on file (NPS):**

- preliminary determination of individual listing (36 CFR 67 has been requested)
- previously listed in the National Register
- previously determined eligible by the National Register
- designated a National Historic Landmark
- recorded by Historic American Buildings Survey # \_\_\_\_\_
- recorded by Historic American Engineering Record # \_\_\_\_\_
- recorded by Historic American Landscape Survey # \_\_\_\_\_

**Primary location of additional data:**

- State Historic Preservation Office
- Other State agency
- Federal agency
- Local government
- University
- Other

Name of repository: Missouri History Museum Archives  
Harris-Stowe State University Library

Historic Resources Survey Number (if assigned): N/A

Walnut Park School  
St. Louis, Missouri, Public Schools of William B. Ittner  
Name of Property

St. Louis (Independent  
City), Missouri  
County and State

**10. Geographical Data**

**Acreage of Property** 3.25 acres

**UTM References**

(Place additional UTM references on a continuation sheet.)

1	<u>15</u>	<u>738858</u>	<u>4287337</u>	3	<u>          </u>	<u>          </u>	<u>          </u>
	Zone	Easting	Northing		Zone	Easting	Northing
2	<u>          </u>	<u>          </u>	<u>          </u>	4	<u>          </u>	<u>          </u>	<u>          </u>
	Zone	Easting	Northing		Zone	Easting	Northing

**11. Form Prepared By**

name/title Elizabeth Rosin (Principal), Rachel Nugent (Associate)

organization Rosin Preservation, LLC date October 23, 2012

street & number 215 W. 18<sup>th</sup> Street, Ste. 150 telephone 816-472-4950

city or town Kansas City state MO zip code 64108

e-mail rachel@rosinpreservation.com

**Additional Documentation**

Submit the following items with the completed form:

- **Maps:**
  - A **USGS map** (7.5 or 15 minute series) indicating the property's location.
  - A **Sketch map** for historic districts and properties having large acreage or numerous resources. Key all photographs to this map.
- **Continuation Sheets**
- **Photographs.**
- **Additional items:** (Check with the SHPO or FPO for any additional items.)

**Property Owner:**

(Complete this item at the request of the SHPO or FPO.)

name Board of Education of the City of St. Louis

street & number 801 N. 11<sup>th</sup> Street telephone 314-345-2245

city or town St. Louis state MO zip code 63101

**Paperwork Reduction Act Statement:** This information is being collected for applications to the National Register of Historic Places to nominate properties for listing or determine eligibility for listing, to list properties, and to amend existing listings. Response to this request is required to obtain a benefit in accordance with the National Historic Preservation Act, as amended (16 U.S.C. 460 et seq.).

**Estimated Burden Statement:** Public reporting burden for this form is estimated to average 18 hours per response including time for reviewing instructions, gathering and maintaining data, and completing and reviewing the form. Direct comments regarding this burden estimate or any aspect of this form to the Office of Planning and Performance Management, U.S. Dept. of the Interior, 1849 C. Street, NW, Washington, DC.

National Register of Historic Places  
Continuation Sheet

Section number 7 Page 1

Walnut Park School  
St. Louis, Missouri, Public Schools of William B. Ittner  
St. Louis (Independent City), Missouri

---

SUMMARY

The Walnut Park School at 5314 Riverview Boulevard, St. Louis (Independent City), Missouri, stands at the center of a large rectangular lot that occupies the full city block. The two-and-a-half-story E-shaped building was constructed in 1909 with red brick walls and a slate roof. The patterned brickwork, restrained stone trim, and steep cross-gable roof clearly convey the Jacobethan/ Tudor Revival style used so often by St. Louis Board of Education Architect William B. Ittner. The Walnut Park School is a highly intact example of an E ("Open") – Plan school, a property type defined in the Multiple Property Documentation Form (MPDF) "St. Louis, Missouri, Public Schools of William B. Ittner." It meets the registration requirements described in the MPDF, including the retention of the historic form and materials, as well as the interior configuration Ittner designed in 1909. Replacement windows, wood on the front and side elevations and aluminum on the rear elevation, mimic the historic sash configuration visible in historic photographs. This and other alterations, including the replacement of flooring and the installation of dropped ceilings, are common for public schools and do not compromise the integrity of the Walnut Park School. The 1980 rear addition has minimal impact on the historic school building, utilizing a small connection point as well as compatible materials and façade treatments. The property includes three additional resources: the painted wrought iron fence and two sculptures. All were built after the period of significance and are non-contributing to the nomination.

ELABORATION

**SETTING**

Walnut Park School sits at the center of a large corner lot in a fairly dense, early 1900s residential neighborhood in north St. Louis. Many of the residences are one and two-story homes typical of this time period. The school sits back from the street, creating a large front lawn. Trees, shrubs, and flowers landscape the property. Concrete walks crisscross the front lawn. Wide concrete stairs lead to the entrances of the school. A concrete World-War II memorial stands in the front lawn. The concrete walks in front of the building also surround a second stone and metal sculpture. A large paved parking lot and playground occupy the area behind the school. An iron fence encircles the property. While the fence does not appear in the photograph taken when the school opened, it is similar but not identical in style to those installed at schools of contemporary vintage. It appears to date to the mid-twentieth century.

National Register of Historic Places  
Continuation Sheet

Section number 7 Page 2

Walnut Park School  
St. Louis, Missouri, Public Schools of William B. Ittner  
St. Louis (Independent City), Missouri

**EXTERIOR**

Walnut Park School is a two-and-a-half-story red brick institutional building with a cross-gabled roof and limestone trim executed in the Jacobethan/Tudor Revival style. The school has a raised rusticated limestone foundation and limestone water table. The building has a shallow E-shaped plan. The long axis of the building is oriented northwest to southeast with the front of the building facing northeast toward Thekla Avenue. The gabled center block extends forward (northeast) from the front of the building, while the gabled wings extend southwest from the rear elevation. The classroom block in the center of the rear elevation and stair hall blocks near each end of the rear elevation have flat roofs. These blocks fill the area between the two wings. The grade of the lot slopes toward Oriole Avenue and a limestone retaining wall anchors the southeast corner of the building. A single story gymnasium addition (circa 1980s) extends southwest from the southwest corner of the building.

The building's elaborate brickwork, steep gables, tall chimneys, and fenestration are typical of the Jacobethan/Tudor Revival style. The exterior walls have a Sussex brick bond, with each course alternating between three stretchers and one header. A limestone belt course encircles the building, separating the first and second stories. A soldier course of brick encircles the building above the second story windows. Diamond-patterned brickwork ornaments the gabled ends of the north and south wings. Gable dormers project from peaks of the cross-gabled roofs at the north and south wings and have false half-timbering around the rectangular window frame. Four internal brick chimneys pierce the roof. Two chimneys flank the center block, and two are located at the intersection of the cross-gabled wings. A large external brick chimney rises along the south end of the center block on the rear (southwest) elevation.

The projecting center bay on the front elevation further expresses the building's Tudor styling. The main entrance features a large stone door surround. A square stone hood tops a shallow Tudor arch above the doorway. Historic wood-framed transom and sidelights fill the arched opening. Five tall, narrow lights comprise the transom. Non-historic paired six-light metal doors provide entry. Full length sidelights flank the paired doors. Small tabs of cut stone jut out from the stone surround into the brick giving a quoined effect. Casement windows with flat brick arches and rowlock sills flank the entrance. Wide concrete stairs span the front entry and are flanked by low cheek walls with heavy limestone copings. On the upper stories of the center block the Tudor styling is expressed by a long horizontal window opening in the second story with a stone-quoined surround and by herringbone and basket-weave-patterned brickwork, half-timbering, and bracketed eaves in the gable end.

National Register of Historic Places  
Continuation Sheet

Section number 7 Page 3

Walnut Park School  
St. Louis, Missouri, Public Schools of William B. Ittner  
St. Louis (Independent City), Missouri

The facades of the end bays have simpler details than the center bay. Non-historic paired metal doors are set within a stone surround that is similar to the main entrance. Simplified square stone hoods top these secondary entrances. Paired multi-light casement windows pierce the first and second stories. A smaller multi-light casement sash pierces the gable end at the top of the elevation.

The fenestration pattern is consistent throughout the building and also expresses Jacobethan / Tudor Revival styling. Rectangular and square window openings pierce the lower level, first story, and second story of each elevation. Multi-light sashes in a variety of configurations fill the openings. These include single casement, paired casement, and paired and tripartite double-hung sashes. Paired six-over-six double hung windows pierce the lower level walls. Large six-over-twelve double-hung tripartite sashes fill the window openings in the bays between the center entrance bay and end bays on the front façade. These large tripartite windows repeat on the north and south facades of the end wings, and the rear center wing. Twelve-light casement sashes fill window openings that pierce the first and second floors of the bays abutting the center and end wings of the front façade and in the front and rear gable ends of the gables of the end bays. Paired twelve-light casement sashes fill openings in the first and second stories of the front and rear facades of the end bays. The rear façade of the center block contains paired six-over-twelve double-hung windows on the first and second stories. Stairwell blocks project from the rear façade of the center block adjacent to the end wings and contain abundant fenestration. Three rows of three twelve-light casement windows are stacked atop each other, creating a cluster of multi-light glazing. Two brick bays project from the first story of the southeast façade. A glazed wall fills each bay. In each, a row of five nine-light sashes line the top of a series of multi-light windows and French doors. Historic iron balconettes span the wall below the windows. Replacement windows have been installed throughout the building, but they match the multi-light configuration of the historic windows. Wood windows fill the historic openings on the front and side elevations, while the rear elevation contains aluminum windows.

A one-story gymnasium addition with a flat roof extends from the rear of the south wing. It attaches to the historic building via a narrow, one-story hyphen. The addition complements the character of the historic building. Red tapestry brick laid in the same bonding pattern clads the walls. The foundation is of random ashlar stone with a dressed water table. A stone beltcourse encircles the addition just below the flat roof. Each corner steps in from the outer wall plane and is ornamented with recessed horizontal courses that mimic rustication. Square concrete blocks top each stepped-in corner. The entrances on the southeast and northwest elevations of the hyphen feature projecting brick surrounds with chevron-patterned brickwork topped by concrete blocks. Non-historic single and paired metal doors fill the doorways.

National Register of Historic Places  
Continuation Sheet

Section number 7 Page 4

Walnut Park School  
St. Louis, Missouri, Public Schools of William B. Ittner  
St. Louis (Independent City), Missouri

---

**INTERIOR**

The interior of Walnut Park School is largely intact and in good condition. The E-shaped or "Open" Plan was Ittner's preferred design, and Walnut Park School is a good example of this building type. The historic design and layout are highly intact, including character defining features such as corridors, stair halls, and classrooms with coat closets. Extant historic materials include wood floors, built-ins, chalkboards, trim, and some doors.

The historic E-shaped plan organizes the building. A double-loaded corridor runs the length of the center block on the first and second floors. Classrooms flank the corridor – continuously along the front of the building and in the center along the back side. The end wings each contain two classrooms on the first and second floors. A modest-sized assembly room occupies the third story in the center of the building.

A wide center stair rises from the main entrance at the front of the building to the first floor. Stairs flanking the entry vestibule descend to the lower level. Wide stair halls attached to the wings provide vertical circulation between the lower level, first, and second floors. A stair centered on the front wall of the second floor corridor rises to the assembly room on the third floor.

The lower level contains support spaces. The library and cafeteria line the front of the lower level. The historic gymnasiums, gender specific restrooms, and mechanical rooms line the rear of the lower level.

The main entrance foyer features a historic full-height vestibule doorway that mimics the form of the exterior doorway. Historic wood framing filled with leaded glass fills the doorway. The paired wood doors also have leaded glass. Decorative art glass ornaments the upper leaded glass panels in the opening. Two rows of stacked and paired fifteen-light windows pierce the side walls of the foyer, admitting abundant light. Terra cotta tiles cover the foyer floor. Beyond the secondary leaded glass partition, wide stairs rise to the first floor corridor.

Corridors retain their original configuration and historic trim. Non-historic suspended grids with acoustical lay-in panels cover the ceilings. The plaster walls are painted with two different colors to achieve the appearance of a wainscot on the lower portion of the wall. The lower portion of the wall is painted with a non-historic textured paint. Classroom entries retain historic wood trim, although the doors are non-historic wood slabs with narrow glazed panels. Transom openings are visible above the doors but have been infilled. Historic brick window sills are flush with the



National Register of Historic Places  
Continuation Sheet

Section number 7 Page 5

Walnut Park School  
St. Louis, Missouri, Public Schools of William B. Ittner  
St. Louis (Independent City), Missouri

plaster walls. An integral brick base flush with the plaster lines the bottom edge of the corridor walls creating a baseboard effect. Tongue-and-groove wood boards cover the corridor floors.

The classrooms retain their original configuration, design, and materials. Chalkboards, built-ins and trim remain. Each classroom has a coat closet with a paneled wood door that slides vertically. The integral brick base lines the perimeter of the plaster classroom walls. Window sills are also brick and flush with the walls. Openings for clerestory windows are visible in the classrooms along the rear wall, but these have been infilled. Non-historic suspended grids with acoustical lay-in panels cover the ceilings. Historic tongue-and-groove wood boards cover the classroom floors.

An assembly space occupies the gabled attic in the center wing. It has exposed wood rafters with carved wood pendants at the juncture of the crossbeams. The attics of the end wings are unfinished storage areas.

Basement finishes differ from those of the upper floors. Non-historic suspended grids with acoustical lay-in panels cover the ceilings. Walls consist of painted and glazed brick and glazed tiles. Window sills are brick. The basement has single and paired metal slab doors. VCT tile covers the concrete floors. Concrete floors are exposed in the bathrooms.

The non-historic gymnasium has a VCT tile floor and painted concrete tile walls. The addition does not have windows. Metal roof trusses are exposed.

#### INTEGRITY

Walnut Park School retains excellent integrity of design, setting, location, materials, and workmanship and clearly conveys feelings about and associations with its period of construction and historic function. The minimal alterations to the interior finishes have not negatively impacted its integrity. The historic windows and doors were replaced, but the new elements fill the original masonry openings. Furthermore, the replacement windows match the configuration of the historic windows. While the repair of historic windows is preferable to replacement, replicating the historic configuration and the use of historically appropriate materials is in accordance with the MPDF. Lay-in acoustical grid ceilings were installed throughout much of the school. This is a common alteration for educational buildings, and the MPDF does not address interior finishes. Walnut Park School is a prime example of an E-shape or "open" plan school designed by St. Louis Commissioner of School Buildings William B. Ittner.

National Register of Historic Places  
Continuation Sheet

Section number 8 Page 6

Walnut Park School  
St. Louis, Missouri, Public Schools of William B. Ittner  
St. Louis (Independent City), Missouri

---

SUMMARY

The Walnut Park School is locally significant under Criterion C for the area of ARCHITECTURE as an excellent example of the property subtype E ("Open") – Plan Elementary School defined in the Multiple Property Documentation Form "St. Louis, Missouri, Public Schools of William B. Ittner." It meets the general registration requirements as well as those specific to the property subtype. The Walnut Park School retains excellent physical integrity of both original materials and characteristic plan shape. The pressed brick walls and slate roof are in good condition and, together with the half-timbering in the gable ends and limited use of stone trim at the primary entrance, communicate the Tudor Revival or Jacobethan style Ittner regularly employed between 1900 and 1910. The Walnut Park School retains the distinctive E-shaped (Open Plan) that Ittner and the St. Louis School District considered the most versatile and successful elementary school design, as described in the historic context "The Refining of the 'Open Plan' in St. Louis Public Schools, 1902-1910" in the amended MPDF.<sup>1</sup> The building retains its historic form, including massing, roof shape, and fenestration. Areas with one-sided corridors have windows opposing the classrooms, providing natural light and ventilation. The building retains the concrete frame along with the wide corridors and stairwells designed to improve fire safety. Although the windows were replaced, the replacement windows match the historic windows in configuration and material on the front and side elevations, and in configuration on the rear elevation. The only addition to the Walnut Park School is a small gymnasium constructed in the 1980s. This tall rectangular block attaches to the southwest end of the rear south wing. It meets the registration requirements regarding additions in that it does not obstruct the adjoining elevation and attaches in a minimal, unobtrusive manner. The Walnut Park School is a remarkably intact E-Plan school built in 1909 and reflects Ittner's dedication to refining the Open Plan as the best possible design for public elementary schools in St. Louis. The period of significance is 1909, the date of construction.

ELABORATION

**CRITERION C - ARCHITECTURE**

As the first permanent elementary school for the Walnut Park neighborhood, the Walnut Park School was designed to represent the educational philosophies of the St. Louis Board of Education. In an article about St. Louis schools published in *The American Architect* in 1914, Ittner himself identifies Walnut Park as a representative example of "the typical Grammar

---

<sup>1</sup> Lynne Josse, "The Refining of the 'Open Plan' in St. Louis Public Schools, 1902-1910," Multiple Property Documentation Form "St. Louis, Missouri, Public Schools of William B. Ittner" (amended), 2000.

National Register of Historic Places  
Continuation Sheet

Section number 8 Page 7

Walnut Park School  
St. Louis, Missouri, Public Schools of William B. Ittner  
St. Louis (Independent City), Missouri

School Building of St. Louis."<sup>2</sup> Walnut Park School is a highly intact example of the E ("Open") – Plan school which developed after several years of experimenting with other plan shapes. The national recognition Ittner received was based on the success of this plan.<sup>3</sup> As described in the MPDF, the "open" plan featured partially or completely single-loaded corridors. Corridors with operable windows allowed light and air to circulate, not only through the corridors, but into the classrooms as well, providing additional light and ventilation to these important spaces. Ittner considered this plan to be the most successful public elementary school plan and designed schools as such for the remainder of his career.<sup>4</sup> The Walnut Park School retains this internal configuration with classrooms lining one side of the bright corridor. The Walnut Park School meets the registration requirements for this property type. It retains physical integrity of form, materials, and fenestration in order to convey its historic character. It remains in its original location and is landscaped in approximately the original fashion. The Walnut Park School also meets the registration requirements for additions and alterations.

**PROPERTY HISTORY<sup>5</sup>**

Walnut Park is a relatively small neighborhood in north St. Louis, Missouri. In the early nineteenth century it was an agricultural area that reportedly derived its name from the walnut groves that many area farmers maintained. As in communities throughout the Midwest, it was the arrival of the railroad that sparked development at the end of the nineteenth century. The Saint Louis Terminal Railroad Company first laid a track through the area to link several freight lines in 1900. Small industrial concerns began locating their businesses along the railroad shortly after the company began acquiring land in 1892. By 1900, the industrial area had enough density to spur residential development in the vicinity and residential streets were surveyed.

The Walnut Park neighborhood was platted in fifteen- to thirty-block sections. In 1900 the "Walnut Park" section, from Thrush Avenue to Riverview Boulevard (then Tracey Road), was laid out with the neighborhood's first school. The working-class neighborhood grew steadily but gradually through the first two decades of the twentieth century. First- and second-generation

<sup>2</sup> William B. Ittner, "School Buildings of St. Louis, Missouri, Part 1" *The American Architect* 111, no. 2021 (9/16/1914): 161. Google Books:

<http://books.google.com/books?id=5bYxAQAAMAAJ&pg=PA533&ipg=PA533&dq=william+B.+Ittner+Walnut+Park+School&source=bl&ots=0Q1w7QVk2I&sig=BTBaWtegbgDaHaXmHFo4o1xDVZM&hl=en&sa=X&ei=F7U3UPr0NseJqQGHx4H4DQ&ved=0CC8Q6AEwAA#v=onepage&q&f=false> (accessed 21 August 2012).

<sup>3</sup> Cynthia H. Longwisch, Multiple Property Documentation Form "St. Louis, Missouri, Public Schools of William B. Ittner." St. Louis, Missouri, 1992, F-6.

<sup>4</sup> Josse.

<sup>5</sup> Unless otherwise noted, information about the history of Walnut Park is found in Jess M. Usery, Jr., "Microurban History: 'Walnut Park: The Story of a Neighborhood,'" Vol. 1, 1764-1945 (St. Louis, Missouri, 1970), 13-40. Missouri History Museum Library & Research Center.

National Register of Historic Places  
Continuation Sheet

Section number 8 Page 8

Walnut Park School  
St. Louis, Missouri, Public Schools of William B. Ittner  
St. Louis (Independent City), Missouri

Americans from many different European countries converged on the area, drawn by the promise of work and the potential for owning a home. Property owners, with the assistance of neighbors and relatives, constructed their own homes. Unlike many contemporary suburban communities, Walnut Park was not a streetcar suburb and offered few options in the way of public transportation. Most people worked for the industries near the railroad line. With the influx of residents, the number and variety of support services grew. Soon there were churches, stores, and taverns. In 1906, the Walnut Park Improvement Association formed to organize efforts to improve the quality of life in Walnut Park. They pursued city services such as street paving, sidewalks, streetlights, and sewers.

Before 1900 there was no school in Walnut Park. Children traveled nearly two miles in each direction to the elementary school in Baden, the closest neighborhood to the northeast. The Board erected a small schoolhouse on the corner of Robin and Thekla Avenues in 1900 to serve the Walnut Park neighborhood. As the neighborhood grew, the Board leased space in private homes and constructed portable buildings at or near the school site to increase the capacity.<sup>6</sup> By 1908 nearly 800 local children attended classes in thirteen portable buildings and one rented room at locations throughout the neighborhood. Average daily attendance was 569, requiring at least 13 teachers with an average of 44 in each class.<sup>7</sup>

At a meeting early in 1908, the Board petitioned the city to extend water mains into the Walnut Park neighborhood, indicating their intention to build a new school. At the same meeting, Commissioner of School Buildings, William B. Ittner presented his plans and specifications for the new Walnut Park School. The Wall Brothers construction firm received a contract to build the school the following month.<sup>8</sup>

The new Walnut Park School opened in September 1909 on a site two blocks north of the original school. The new building had fifteen classrooms and incorporated all of the features Ittner deemed important for elementary school design, including single-loaded corridors that provided light and ventilation in the corridors and the classrooms; lavatories and playrooms or gymnasiums in the basement; a designated kindergarten room; and an assembly space in the attic. The expansive school lot occupied a full city block and contained sufficient space to achieve a park-like landscape in front of the building and to provide a generous outdoor play area behind it. The form and exterior ornament of Walnut Park School express the Tudor

<sup>6</sup> Board of Education of St. Louis, Missouri, "Printed Record of the Board of Education for the City of St. Louis," Vol. XIV, July 1<sup>st</sup> 1905 to June 30<sup>th</sup> 1907, (St. Louis, MO: Board of Education of St. Louis, 1907) 10, 50, 164, 473, 526, 732, 845.

<sup>7</sup> Board of Education, Vol. XVI, 173.

<sup>8</sup> Board of Education, Vol. XV, 306, 308, 369.

National Register of Historic Places  
Continuation Sheet

Section number 8 Page 9

Walnut Park School  
St. Louis, Missouri, Public Schools of William B. Ittner  
St. Louis (Independent City), Missouri

---

Revival or Jacobethan style that Ittner employed in the majority of schools he designed between 1900 and 1910. William B. Ittner served as the Commissioner of School Buildings for the City of St. Louis from 1897 until 1910, during which time he created a more uniform aesthetic and consistent design philosophy throughout the district.

The Walnut Park School closed in 2003 when a new elementary school opened. The Board continued to lease the building for educational programs and activities for an additional six years. The building has been vacant since 2009.

National Register of Historic Places  
Continuation Sheet

Section number 9 Page 10

Walnut Park School  
St. Louis, Missouri, Public Schools of William B. Ittner  
St. Louis (Independent City), Missouri

---

**BIBLIOGRAPHY**

Board of Education of St. Louis, Missouri, "Fifty-Fifth Annual Report of the Board of Education for the City of St. Louis, Missouri for the Year Ending June 30, 1909." St. Louis, MO: Nixon-Jones Printing Co., 1910. Missouri History Museum Library & Research Center.

Board of Education of St. Louis, Missouri, "Printed Record of the Board of Education for the City of St. Louis," Vol. XIV, July 1st 1905 to June 30th 1907, St. Louis, MO: Board of Education of St. Louis, 1907. Harris-Stowe State University Library.

Board of Education of St. Louis, Missouri, "Printed Record of the Board of Education for the City of St. Louis," Vol. XV, July 1st 1907 to June 30th 1909, St. Louis, MO: Board of Education of St. Louis, 1909. Harris-Stowe State University Library.

Board of Education of St. Louis, Missouri, "Printed Record of the Board of Education for the City of St. Louis," Vol. XVI, July 1st 1909 to June 30th 1910, St. Louis, MO: Board of Education of St. Louis, 1910. Harris-Stowe State University Library.

Ittner, William B. "School Buildings of St. Louis, Missouri, Part 1" *The American Architect* 111, no. 2021 (9/16/1914):161-172. Google Books:  
<http://books.google.com/books?id=5bYxQAAMAAJ&pg=PA533&lpg=PA533&dq=william+B.+Ittner+Walnut+Park+School&source=bl&ots=0Q1w7QV2l&sig=BTBaWtegbqDaHaXmHFo4o1xDVZM&hl=en&sa=X&ei=F7U3UPr0NseJqQGHx4H4DQ&ved=0CC8Q6AEwAA#v=onepage&q&f=false> (accessed 21 August 2012).

Josse, Lynn. Multiple Property Documentation Form "St. Louis, Missouri, Public Schools of William B. Ittner," Amended Submission. St. Louis, Missouri, 2000.

Longwisch, Cynthia H. Multiple Property Documentation Form "St. Louis, Missouri, Public Schools of William B. Ittner." St. Louis, Missouri, 1992.

Usery, Jess M. Jr. "Microuurban History: 'Walnut Park: The Story of a Neighborhood,'" Vol. 1, 1764-1945. St. Louis, Missouri, 1970. Missouri History Museum Library & Research Center.

National Register of Historic Places  
Continuation Sheet

Section number 10 and Additional Documents Page 11 Walnut Park School  
St. Louis, Missouri, Public Schools of William B. Ittner  
St. Louis (Independent City), Missouri

---

**VERBAL BOUNDARY DESCRIPTION**

The Walnut Park School occupies the whole block in the Walnut Park Addition bounded by Riverview Boulevard on the north, Thekla Avenue on the east, Oriole Avenue on the south, and Garesche Avenue on the west. Legal Description: C. B. 5355 Riverview; 488FT 4 3/8IN X 287FT 8IN/282FT 3 1/4IN Walnut Park Addition, Whole Block.

**BOUNDARY JUSTIFICATION**

The boundary of the nominated resource includes the parcels of land historically associated with the property.

**ADDITIONAL DOCUMENTS**

**LIST OF FIGURES**

- Figure 1. Historic Photo, 1910. "Fifty-Fifth Annual Report of the Board of Education for the City of St. Louis, Missouri for the Year Ending June 30, 1909."  
Figure 2. Sanborn Fire Insurance Map, St. Louis, Missouri. 1931, Volume 11, Sheet 75.  
Figure 3. Site Map. Bing, 2012.  
Figure 4. Photo Map

National Register of Historic Places  
Continuation Sheet

Section number 10 and Additional Documents Page 12 Walnut Park School  
St. Louis, Missouri, Public Schools of William B. Ittner  
St. Louis (Independent City), Missouri

Figure 1. Historic Photograph, c. 1910

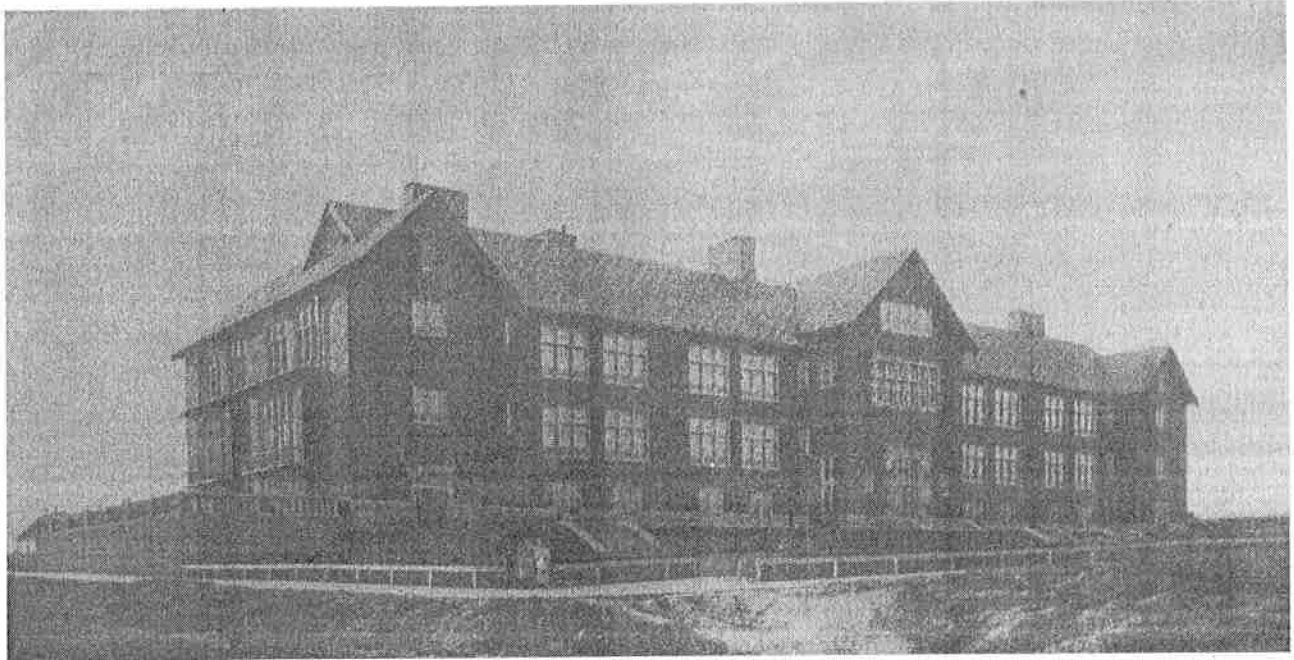
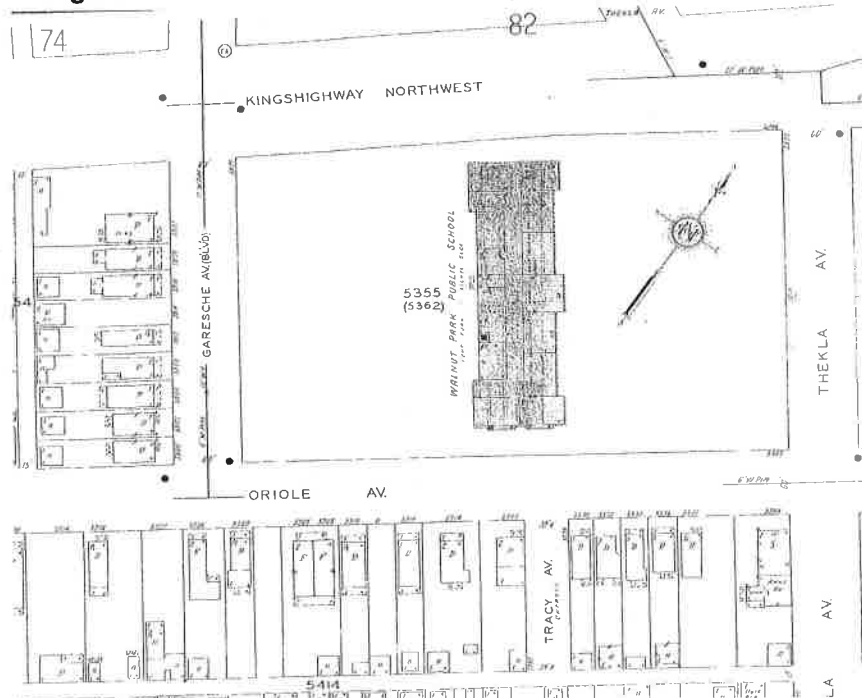


Figure 2. Sanborn Fire Insurance Map, 1931, Vol. 11, Sheet 75.





National Register of Historic Places  
Continuation Sheet

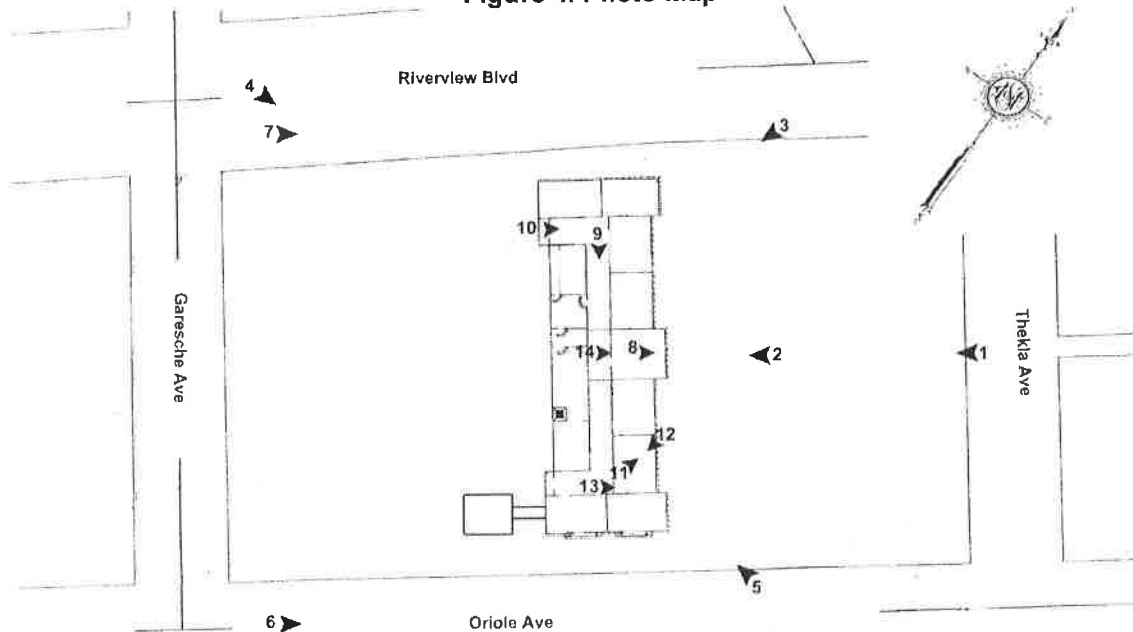
Section number 10 and Additional Documents Page 13

Walnut Park School  
St. Louis, Missouri, Public Schools of William B. Ittner  
St. Louis (Independent City), Missouri

Figure 3. Site Map



Figure 4. Photo Map



National Register of Historic Places  
Continuation Sheet

Section number Photo Log Page 14

Walnut Park School  
St. Louis, Missouri, Public Schools of William B. Ittner  
St. Louis (Independent City), Missouri

**Name of Property:** Walnut Park School

**City or Vicinity:** St. Louis (Independent City)

**County:** St. Louis (Independent City) **State:** Missouri

**Photographer:** Kristen Ottesen

**Date Photographed:** August 2012

**Description of Photograph(s) and number:**

*All digital images labeled as follows: MO\_StLouisIndependentCity\_WalnutParkSchool\_#.tif*

**1 of 14.** Front (northeast) elevation, view southwest.

**2 of 14.** Detail of main entrance and center pavilion, view southwest.

**3 of 14.** Front (northeast) and northwest elevations, view south.

**4 of 14.** Rear (southwest) elevation with 1980 addition at south corner, view east.

**5 of 14.** Southeast and front (northeast) elevations, view west.

**6 of 14.** View northeast along Oriole Avenue.

**7 of 14.** View northeast along Riverview Boulevard.

**8 of 14.** Entry vestibule and stairwell, view northeast.

**9 of 14.** Typical corridor, view southeast.

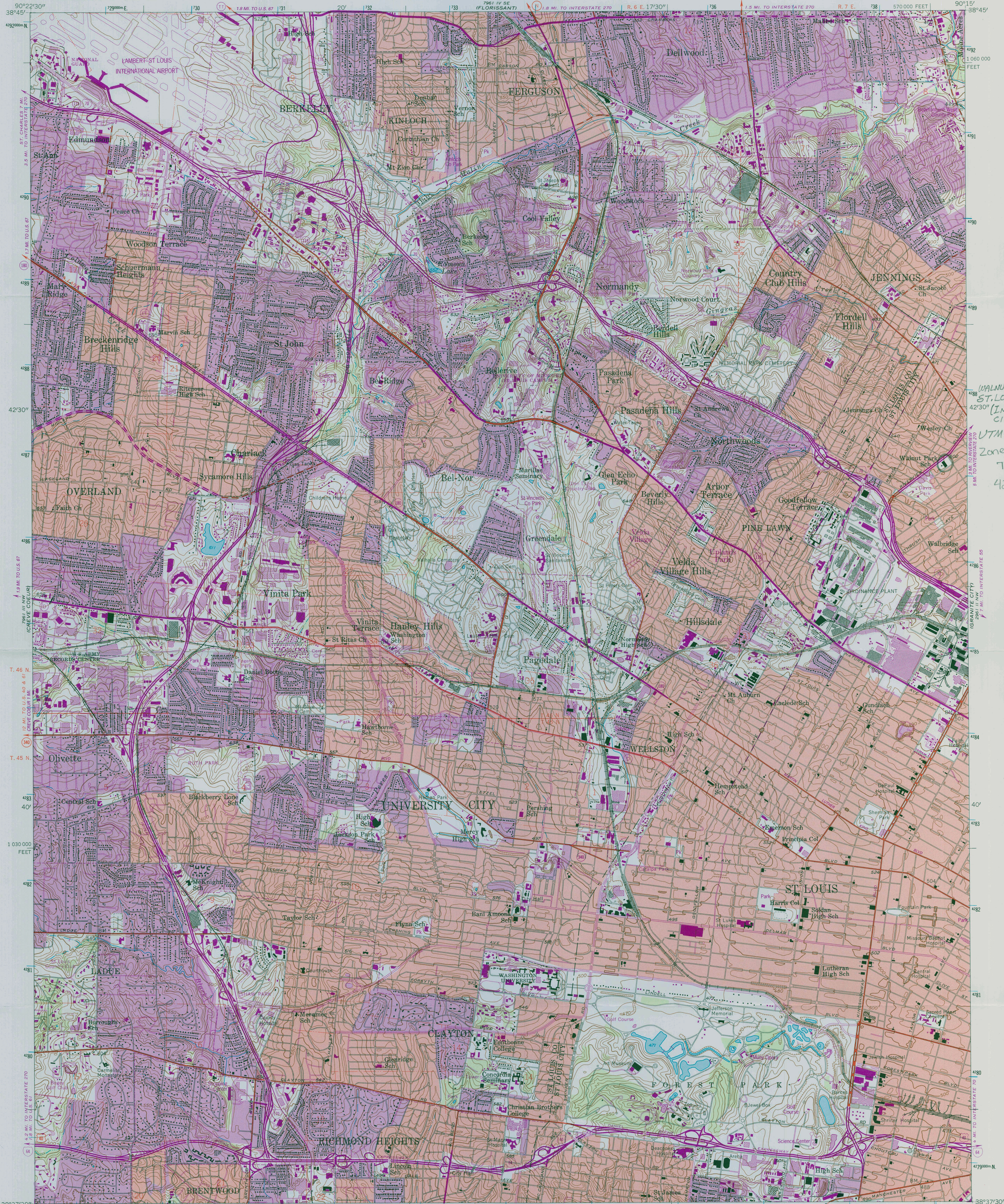
**10 of 14.** Open stairwell, typical.

**11 of 14.** Typical classroom.

**12 of 14.** Typical classroom.

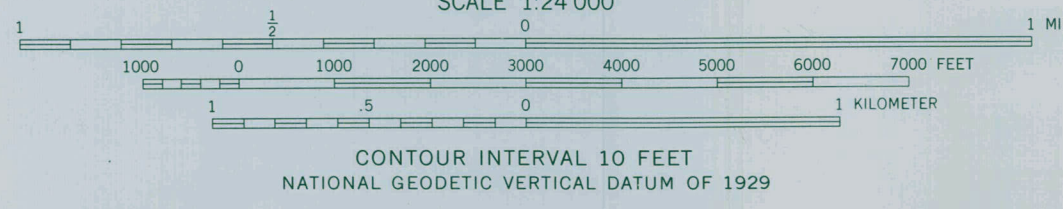
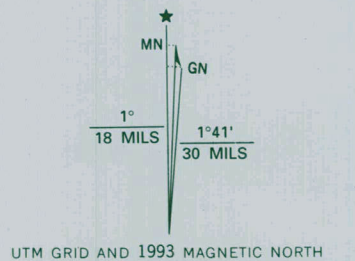
**13 of 14.** Typical coat closet.

**14 of 14.** Assembly Hall, 3<sup>rd</sup> floor, view northeast.



UTM REFS  
Zone 15  
738858E  
4281337N

Produced by the United States Geological Survey  
Control by USGS and NOS/NOAA  
Topography by planetable surveys 1933  
Revised from aerial photographs taken 1952  
Field checked 1953-54  
Projection and 10,000-foot grid ticks: Missouri coordinate system, east zone (transverse Mercator)  
1000-meter Universal Transverse Mercator grid ticks, zone 15, shown in blue 1927 North American Datum (NAD 27)  
North American Datum of 1983 (NAD 83) is shown by dashed corner ticks  
The values of the shift between NAD 27 and NAD 83 for 7.5-minute intersections are given in USGS Bulletin 1875  
There may be private inholdings within the boundaries of the National or State reservations shown on this map  
Red tint indicates areas in which only landmark buildings are shown



ROAD CLASSIFICATION

Primary highway, hard surface	Light-duty road, hard or improved surface
Secondary highway, hard surface	Unimproved road
Interstate Route	U. S. Route
	State Route

COMPLIES WITH U.S. GEOLOGICAL SURVEY STANDARDS FOR SPATIAL ACCURACY - CLASS 2  
FOR SALE BY U.S. GEOLOGICAL SURVEY, DENVER, COLORADO 80225, OR RESTON, VIRGINIA 22092  
AND DIVISION OF GEOLOGY AND LAND SURVEY  
MISSOURI DEPARTMENT OF NATURAL RESOURCES, ROLLA, MISSOURI 65401  
A FOLDER DESCRIBING TOPOGRAPHIC MAPS AND SYMBOLS IS AVAILABLE ON REQUEST

Revisions shown in purple compiled from aerial photographs taken 1988-90 and other sources. This information not field checked. Map edited 1993  
Information shown in purple may not meet USGS content standards and may conflict with previously mapped contours  
Purple tint indicates extension of urban areas

CLAYTON, MO.  
38090-F3-TF-024  
1954  
REVISED 1993  
DMA 7961 III NE-SERIES V879

































UNITED STATES DEPARTMENT OF THE INTERIOR  
NATIONAL PARK SERVICE

NATIONAL REGISTER OF HISTORIC PLACES  
EVALUATION/RETURN SHEET

REQUESTED ACTION: NOMINATION

PROPERTY NAME: Walnut Park School

MULTIPLE NAME: St. Louis Public Schools of William B. Ittner MPS

STATE & COUNTY: MISSOURI, St. Louis

DATE RECEIVED: 3/08/13      DATE OF PENDING LIST: 4/03/13  
DATE OF 16TH DAY: 4/18/13      DATE OF 45TH DAY: 4/24/13  
DATE OF WEEKLY LIST:

REFERENCE NUMBER: 13000194

REASONS FOR REVIEW:

APPEAL: N    DATA PROBLEM: N    LANDSCAPE: N    LESS THAN 50 YEARS: N  
OTHER: N    PDIL: N    PERIOD: N    PROGRAM UNAPPROVED: N  
REQUEST: N    SAMPLE: N    SLR DRAFT: N    NATIONAL: N

COMMENT WAIVER: N

ACCEPT     RETURN     REJECT    4.23.13 DATE

ABSTRACT/SUMMARY COMMENTS:

Entered in  
The National Register  
of  
Historic Places

RECOM./CRITERIA \_\_\_\_\_

REVIEWER \_\_\_\_\_ DISCIPLINE \_\_\_\_\_

TELEPHONE \_\_\_\_\_ DATE \_\_\_\_\_

DOCUMENTATION see attached comments Y/N see attached SLR Y/N

If a nomination is returned to the nominating authority, the nomination is no longer under consideration by the NPS.



Jeremiah W. (Jay) Nixon, Governor • Sara Parker Pauley, Director

# DEPARTMENT OF NATURAL RESOURCES



www.dnr.mo.gov

## Memorandum

**Date:** February 27, 2013

**To:** Keeper, National Register of Historic Places

**From:** Mark A. Miles, Deputy SHPO and Director, Missouri State Historic Preservation Office *MAM*

**Subject:** Walnut Park School, St. Louis [Independent City], Missouri, National Register Nomination  
St. Louis, Missouri, Public Schools of William B. Ittner MPDF

Our state review board, the Missouri Advisory Council on Historic Preservation, approved the above nomination on February 8, 2013. All owners and appropriate elected public officials were notified and provided at least thirty (30) days to comment on the above nomination in accordance with Section 36CFR60.6, interim regulations, using the exact notification format recommended by the National Register.

Please find enclosed the following documentation:

- 1   Original National Register of Historic Places registration form
- Multiple Property Documentation Form
- 14   Photographs
- 1   CD with electronic images
- 1   Original USGS map(s)
- Sketch map(s)/figures(s)/exhibits not on continuation sheets
- Piece(s) of correspondence
- Other: \_\_\_\_\_

### Comments:

- Please insure that this nomination is reviewed
- The enclosed owner objection(s) do        do not        constitute a majority of property owners.
- Other: \_\_\_\_\_