



PHOTO

Copy of 1894 interior photograph taken from south to north. Note the '3000 TUNS' painted on the post to the left, indicating the weight of tin plate stored on the first floor.

J. H. BRATT,

Astoria, Or.

Astoria Wharf & Warehouse Company
Astoria Waterfront between 3rd & 4th.
Astoria, Clatsop County, Oregon
1 of 10

Interior photo, c. 1894
Neg: Rod Grider, PO Box 834
Astoria, OR 97103



SOUTHEAST ELEVATION

Astoria Wharf & Warehouse Company
Astoria Waterfront between 3rd & 4th
Astoria, Clatsop County, Oregon
2 of 10

Southeast elevation, 1984
Neg: Rod Grider, PO Box 834
Astoria, OR 97103



SOUTHWEST ELEVATION

Astoria Wharf & Warehouse Company
Astoria Waterfront between 3rd & 4th
Astoria, Clatsop County, Oregon
3 of 10

Southwest elevation, 1984
Neg: Rod Grider, PO Box 834
Astoria, OR 97103



NORTHWEST ELEVATION

Astoria Wharf & Warehouse Compnay
Astoria Waterfront between 3rd & 4th
Astoria, Clatsop County, Oregon
4 of 10

Northwest elevation, 1984
Neg: Rod Grider, PO Box 834
Astoria, OR 97103



NORTH ELEVATION

Astoria Wharf & Warehouse Company

Astoria Waterfront between 3rd & 4th

Astoria, Clatsop County, Oregon

5 of 10

North elevation, 1984

Neg: Rod Grider, PO Box 834

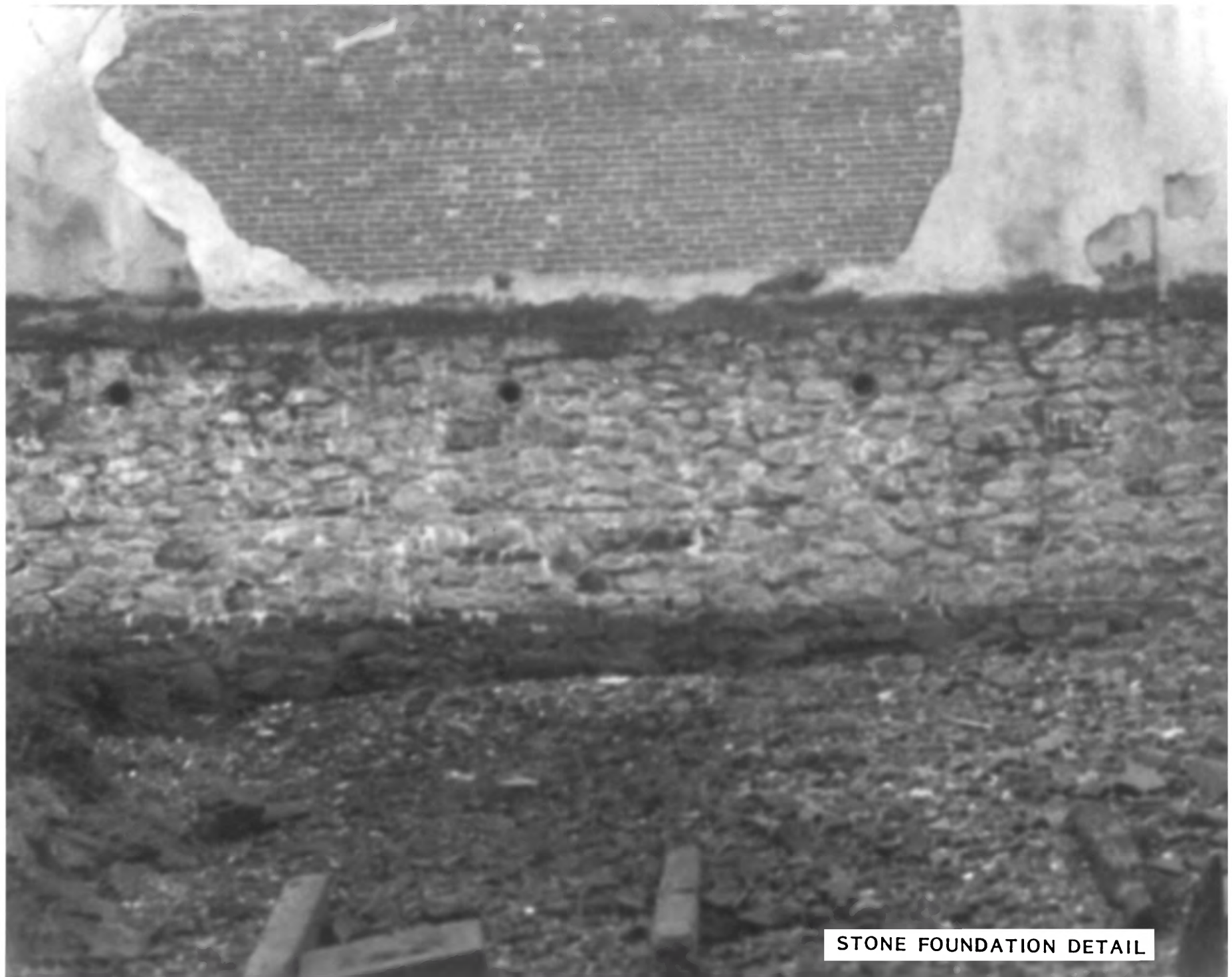
Astoria, OR 97103



SOUTH DETAIL

Astoria Wharf & Warehouse Company
Astoria Waterfront between 3rd & 4th
Astoria, Clatsop County, Oregon
6 of 10

South elevation detail, 1984
Neg: Rod Grider, PO Box 834
Astoria, OR 97103



STONE FOUNDATION DETAIL

Astoria Wharf & Warehouse Company
Astoria Waterfront between 3rd & 4th
Astoria, Clatsop County, Oregon
7 of 10

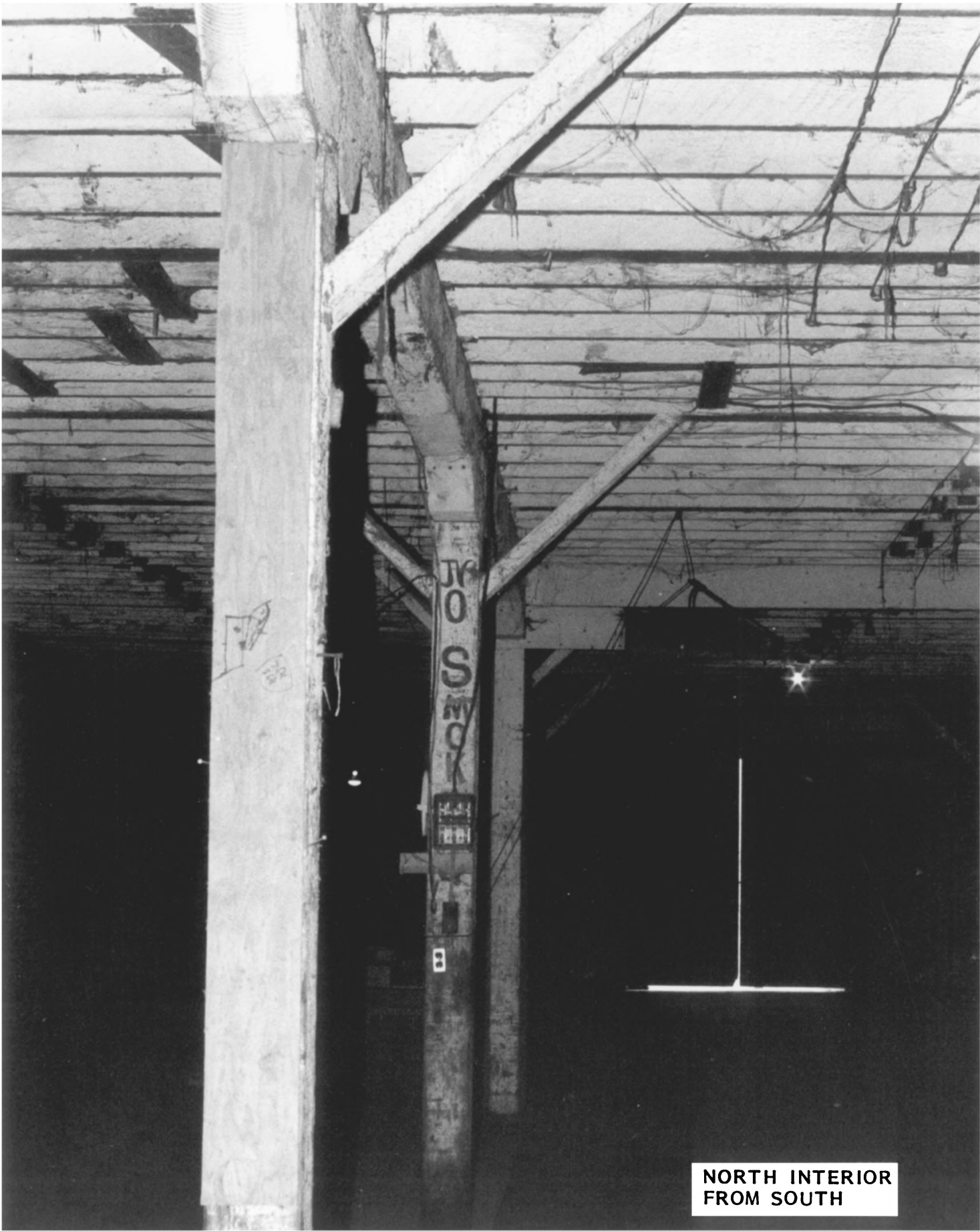
Stone foundation detail, 1984
Neg: Rod Grider, PO Box 834
Astoria, OR 97103



SOUTH INTERIOR
FROM NORTH

Astoria Wharf & Warehouse Company
Astoria Waterfront between 3rd & 4th
Astoria, Clatsop County, Oregon
8 of 10

Interior from the north, 1984
Neg: Rod Grider, PO Box 834
Astoria, OR 97103



NORTH INTERIOR
FROM SOUTH

Astoria Wharf & Warehouse Company
Astoria Waterfront between 3rd & 4th
Astoria, Clatsop County, Oregon
9 of 10

Interior from the south, 1984
Neg: Rod Grider, PO Box 834
Astoria, OR 97103



INTERIOR CONSTRUCTION
DETAIL

Astoria Wharf & Warehouse Company
Astoria Waterfront between 3rd & 4th
Astoria, Clatsop County, Oregon
10 of 10

Interior construction detail, 1984
Neg: Rod Grider, PO Box 834
Astoria, OR 97103