



ERECTED
1942
BY AN ACT OF CONGRESS
AUGUST 25 1941

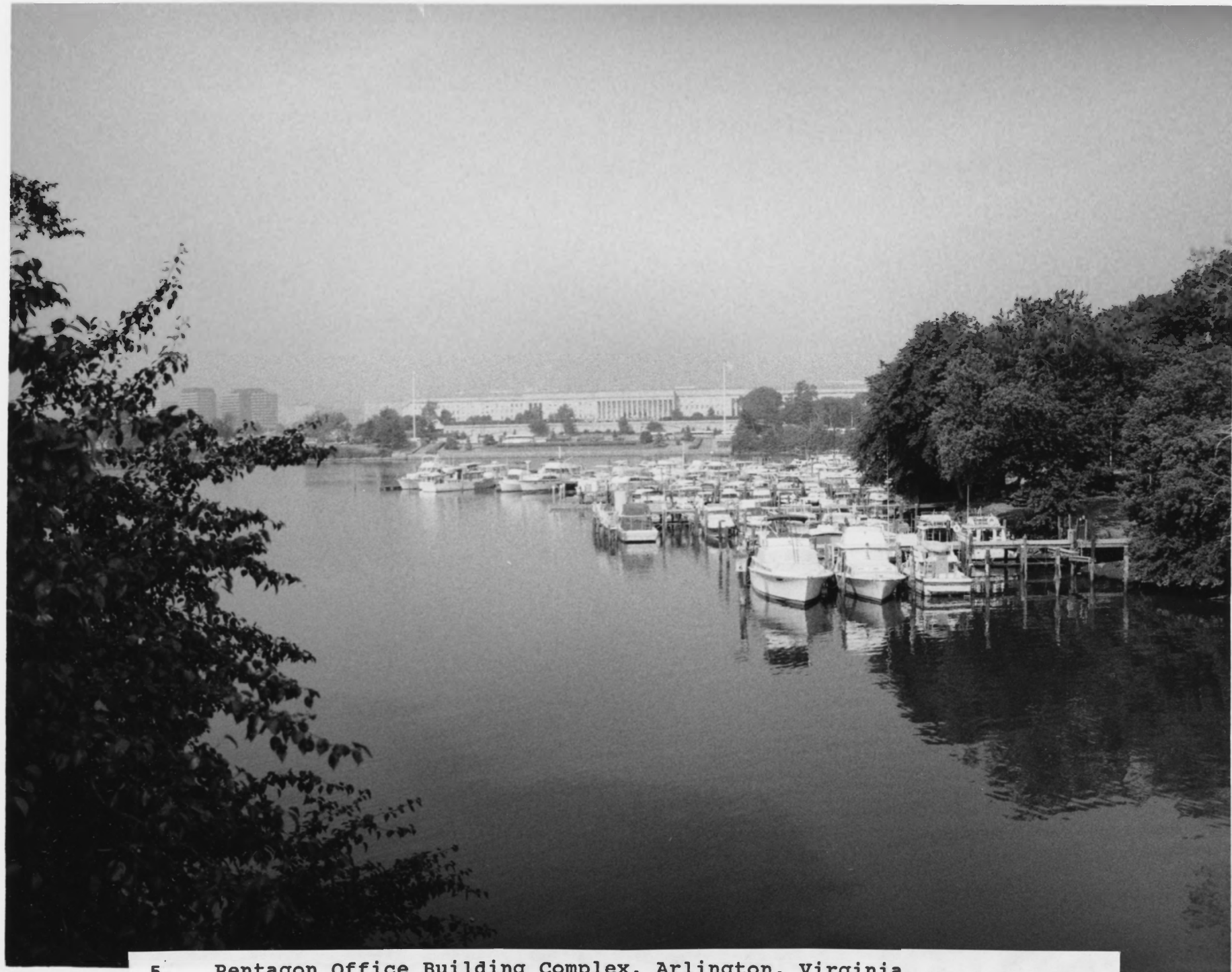
WAR DEPARTMENT
OF
FRANKLIN D. ROOSEVELT
PRESIDENT OF THE UNITED STATES OF AMERICA
HENRY L. STIMSON
SECRETARY OF WAR
ROBERT P. PATTERSON
UNDER SECRETARY OF WAR
GENERAL GEORGE C. MARSHALL
CHIEF OF STAFF
LT. GEN. BREHON SOMERVELL
COMMANDING GENERAL, SERVICE OF SUPPLY
MAJ. GEN. EUGENE REYBOLD
CHIEF OF ENGINEERS
MAJ. GEN. THOMAS M. ROBINS
CHIEF OF CONSTRUCTION
BRIG. GEN. LESLIE R. GROVES
DEPUTY CHIEF OF CONSTRUCTION
LT. COL. CLARENCE RENSCHAW
DISTRICT ENGINEER
G. EDWIN BERGSTROM
DAVID J. WITMER
CHIEF ARCHITECTS
JOHN McSHAIN^{INC.}
DOYLE & RUSSELL
WISE CONTRACTING CO.^{INC.}
BUILDERS
J. PAUL HALICK
BUILDING MANAGER

2. Pentagon Office Building Complex, Arlington, Virginia. Pentagon Cornerstone and Dedication Plaque, adjacent to the Mall Entrance. Photo by Daniel Koski-Karell, 1988






4. Pentagon Office Building Complex, Arlington, Virginia. South Parking Entrance facade on the left, Concourse facade on the right. Photo by Daniel Koski-Karell, 1988



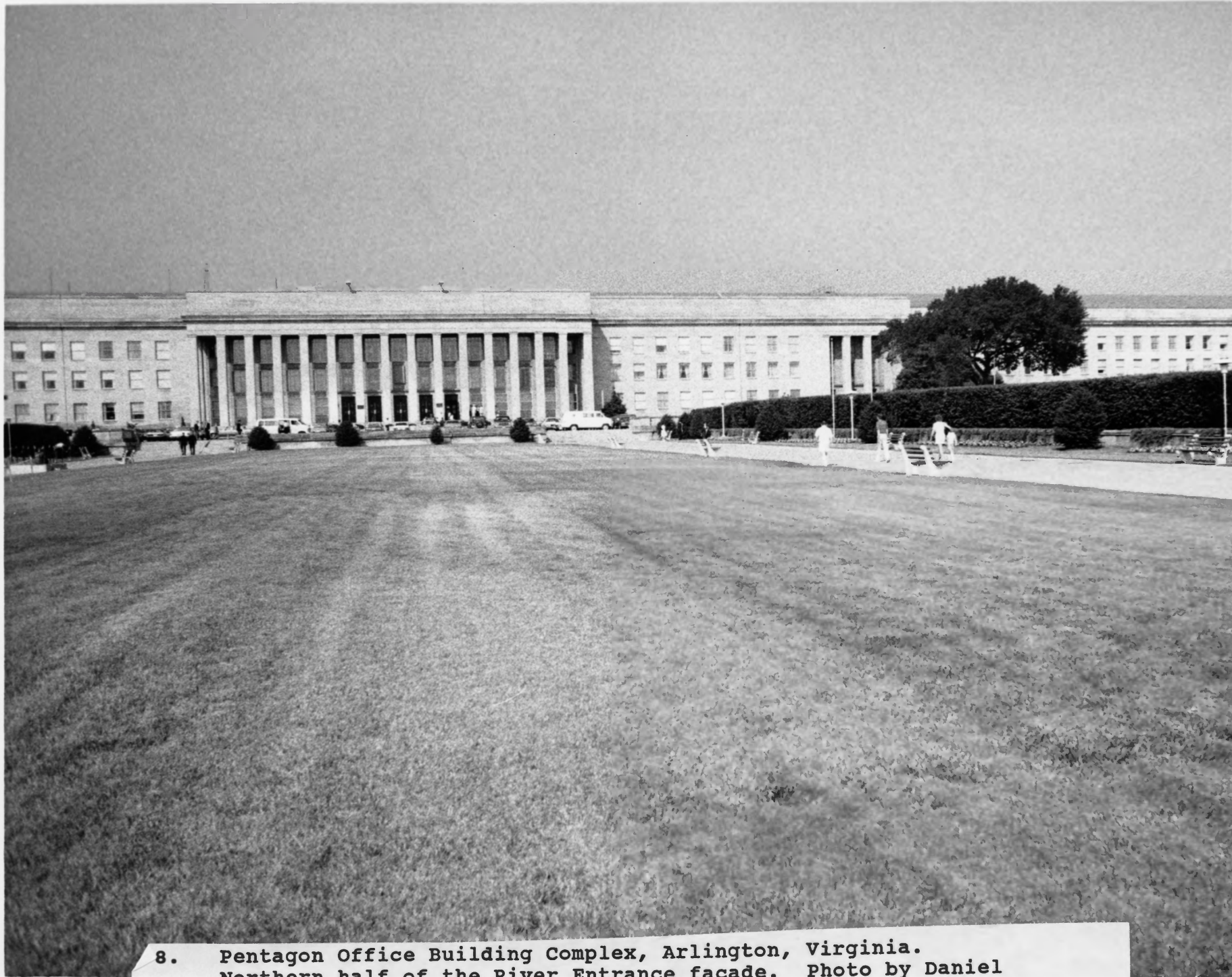
5. Pentagon Office Building Complex, Arlington, Virginia.
River Entrance. Photo by Daniel Koski-Karell, 1988



6. Pentagon Office Building Complex, Arlington, Virginia. Middle level stairways and upper level face of the River Entrance's Terrace. Photo by Daniel Koski-Karell, 1988



7. Pentagon Office Building Complex, Arlington, Virginia.
Central colonnade of the River Entrance. Photo by Daniel
Koski-Karell, 1988



8. Pentagon Office Building Complex, Arlington, Virginia.
Northern half of the River Entrance facade. Photo by Daniel
Koski-Karell, 1988



9. Pentagon Office Building Complex, Arlington, Virginia.
Detail of the central portion of the River Entrance's central
colonnade. Photo by Daniel Koski-Karell, 1988



10. Pentagon Office Building Complex, Arlington, Virginia. Western half of the Mall Entrance and northern face of the Mall Entrance's Terrace. Photo by Daniel Koski-Karell, 1988