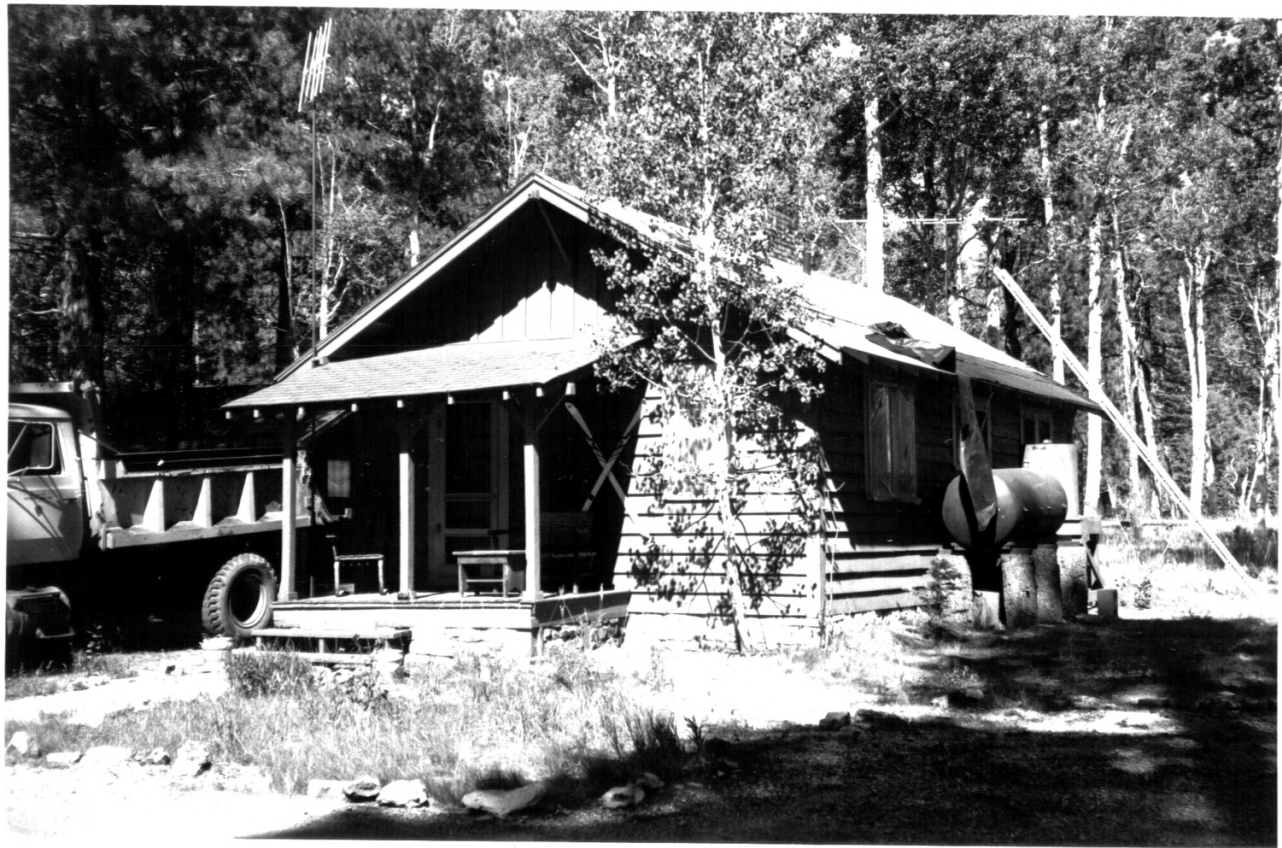




1. RESIDENCE NO. 177 GRAND CANYON NATIONAL PARK
NORTH RIM HEADQUARTERS
2. NORTH RIM OF THE GRAND CANYON, ARIZONA
3. NATIONAL PARK SERVICE PHOTO BY RICK THORUM
4. SEPTEMBER 9, 1980
5. NEGATIVE AT NATIONAL PARK SERVICE,
WESTERN REGIONAL OFFICE
6. VIEW SOUTHWEST
7. PHOTO 15 OF 17



1. GOVERNMENT GAS STATION (BUILDING 25)
NORTH RIM HEADQUARTERS AREA, GRAND CANYON
NATIONAL PARK.
2. NORTH RIM OF THE GRAND CANYON, ARIZONA
3. NATIONAL PARK SERVICE PHOTO BY GORDON CHAPPELL
4. SEPTEMBER 9, 1980
5. NEGATIVE AT NATIONAL PARK SERVICE WESTERN REGIONAL
OFFICE.
6. VIEW TO NORTHWEST OF FRONT AND LEFT SIDE OF GAS
STATION
7. PHOTO 16 OF 17



1. RESIDENCE 101, BUILT 1926
NORTH RIM HEADQUARTERS AREA GRAND CANYON NATIONAL
PARK
- 2 NORTH RIM OF THE GRAND CANYON, ARIZONA
- 3 NATIONAL PARK SERVICE PHOTO BY ERICSON STAFFORD
4. September 9, 1970
5. NEGATIVE AT NATIONAL PARK SERVICE, WESTERN REGIONAL
OFFICE.
6. VIEW TO NORTHWEST
7. PHOTO 17 OF 17



1. MAINTENANCE AREA

NORTH RIM HEADQUARTERS AREA GRAND CANYON
NATIONAL PARK

2 NORTH RIM OF THE GRAND CANYON ARIZONA

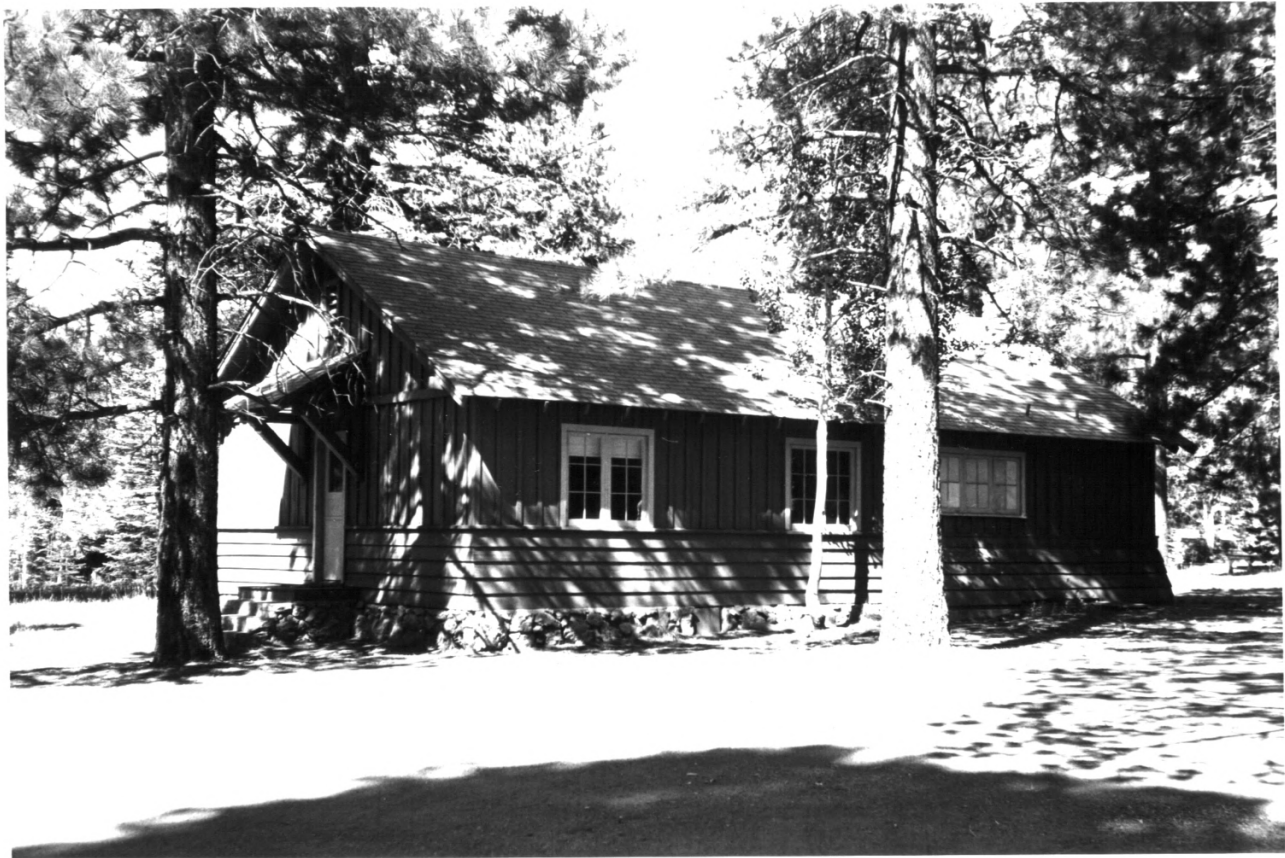
3 NATIONAL PARK SERVICE PHOTO BY GORDON CHAPPELL

4 September 9, 1980

5. NEGATIVE AT NATIONAL PARK SERVICE WESTERN
REGIONAL OFFICE

6 VIEW TO SOUTH

7 PHOTO 5 of 17



1. DORMITORY BUILDING 111
NORTH RIM HEADQUARTERS AREA, GRAND CANYON NATIONAL
PARK
2. NORTH RIM OF THE GRAND CANYON, ARIZONA
3. NATIONAL PARK SERVICE PHOTO BY RICK THORUM
4. SEPTEMBER 9, 1980
5. NEGATIVE AT NATIONAL PARK SERVICE, WESTERN
REGIONAL OFFICE
6. VIEW WEST-NORTHWEST
7. PHOTO 5 OF 17

1 DORMITORY BUILDING III 1931
NORTH RIM HEADQUARTERS AREA, GRAND CANYON
NATIONAL PARK

2 North Rim of the Grand Canyon, Arizona

3 NATIONAL PARK SERVICE PHOTO BY GORDON CHAPPELL

4 SEPTEMBER 9, 1980

5 NEGATIVE AT NATIONAL PARK SERVICE, WESTERN REGIONAL
OFFICE

6 VIEW TO SOUTH-SOUTHWEST

7 PHOTO 9 of 17



1 HORSE BARN, BUILDING 129 (1926)
NORTH RIM HEADQUARTERS AREA, GRAND CANYON
NATIONAL PARK

2 North Rim of the GRAND CANYON, ARIZONA

3. NATIONAL PARK SERVICE PHOTO BY GORDON CHAPPELL

4. September 9, 1980

5. NEGATIVE AT NATIONAL PARK SERVICE WESTERN
REGIONAL OFFICE

6. VIEW TO NORTH/NORTH EAST OF WEST SIDE AND
SOUTH END.

7. PHOTO 3 OF 17



REAR OF RESIDENCE 102, GARAGE & FUEL SHED 102-A
NORTH RIM HEADQUARTERS AREA, GRAND CANYON NATIONAL PARK

2. North Rim of the GRAND CANYON, ARIZONA

3 NATIONAL PARK SERVICE PHOTO BY CAROL CHAPPELL

4 SEPTEMBER 9, 1980

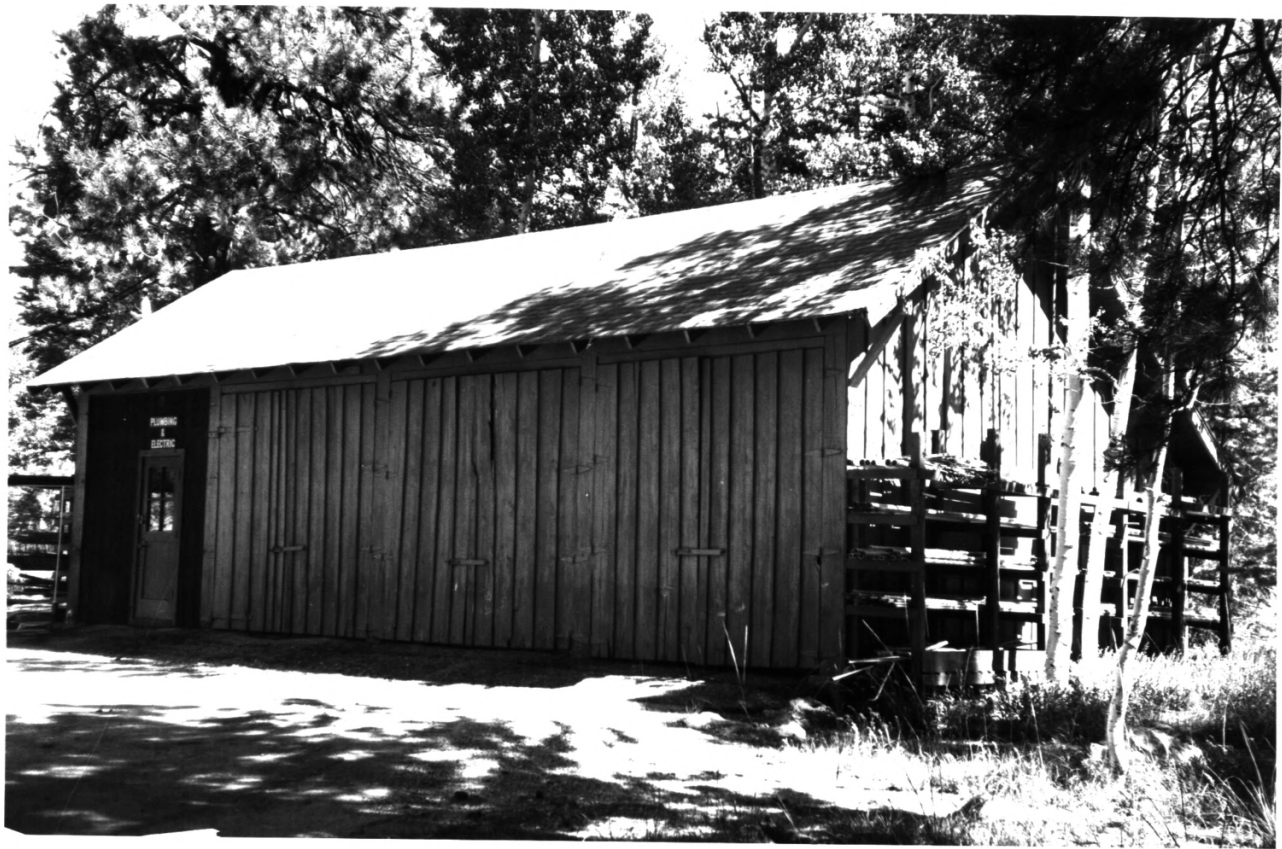
5. NEGATIVE AT NATIONAL PARK SERVICE WESTERN REGIONAL
OFFICE.

6 VIEW TOWARD NORTHEAST OF TWO 1931 BUILDINGS

7. PHOTO 2 OF 17



1. RESIDENCE NO 102
NORTH RIM HEADQUARTERS AREA, GRAND CANYON
NATIONAL PARK
2. NORTH RIM OF THE GRAND CANYON, ARIZONA
3. NATIONAL PARK SERVICE PHOTO BY GORDON CHAPPELL
4. SEPTEMBER 9, 1980
5. NEGATIVE AT NATIONAL PARK SERVICE, WESTERN REGIONAL
OFFICE
6. VIEW TOWARD SOUTHWEST
7. PHOTO 1 OF 19



1. PLUMBING AND ELECTRIC SHOP, BUILDING 123
NORTH, RIM HEADQUARTERS, GRAND CANYON
NATIONAL PARK

2. NORTH RIM OF THE GRAND CANYON, ARIZONA

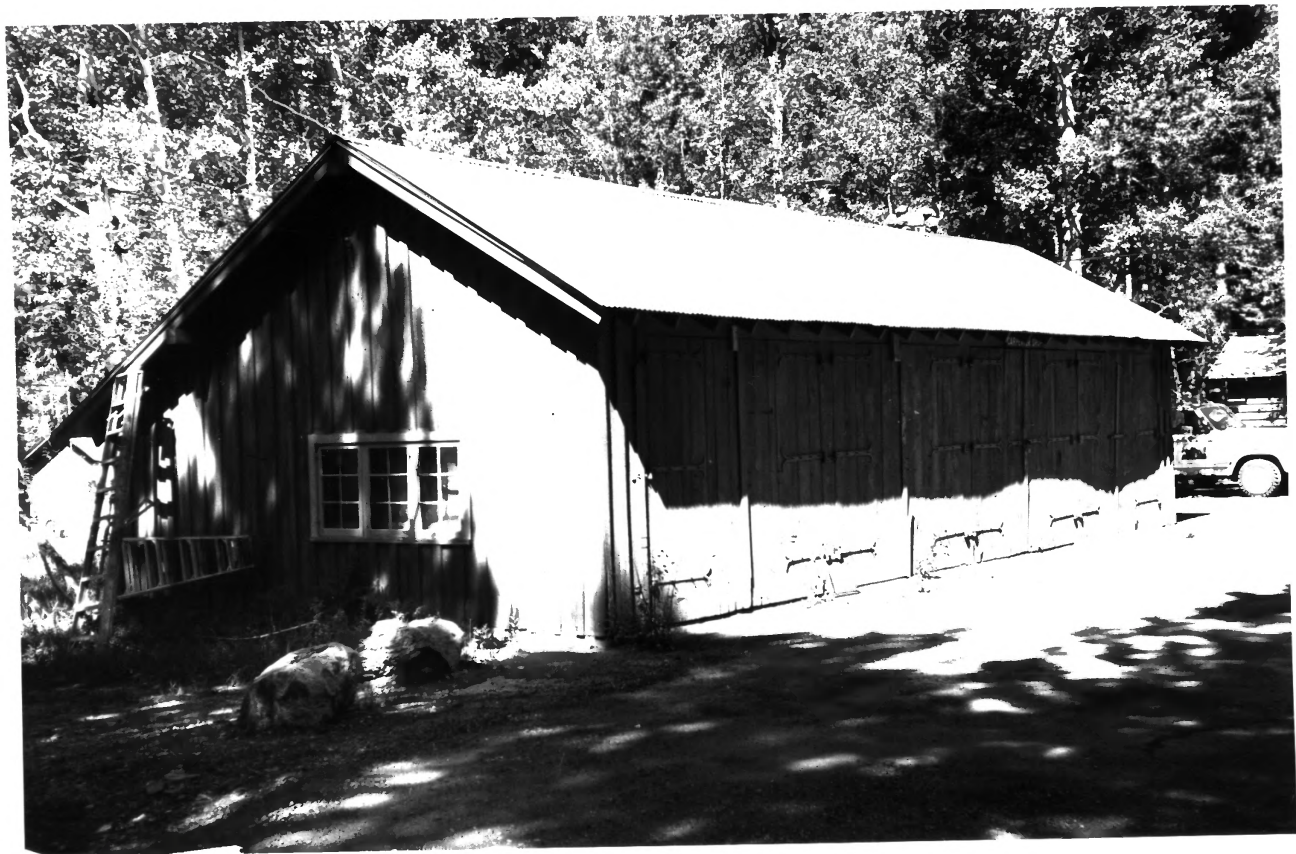
3. NATIONAL PARK SERVICE PHOTO BY GORDON
CHAPPELL

4. SEPTEMBER 9, 1980

5. NEGATIVE AT NATIONAL PARK SERVICE
WESTERN REGIONAL OFFICE

6. VIEW NORTHEAST OF WESTSIDE OF BUILDING 123

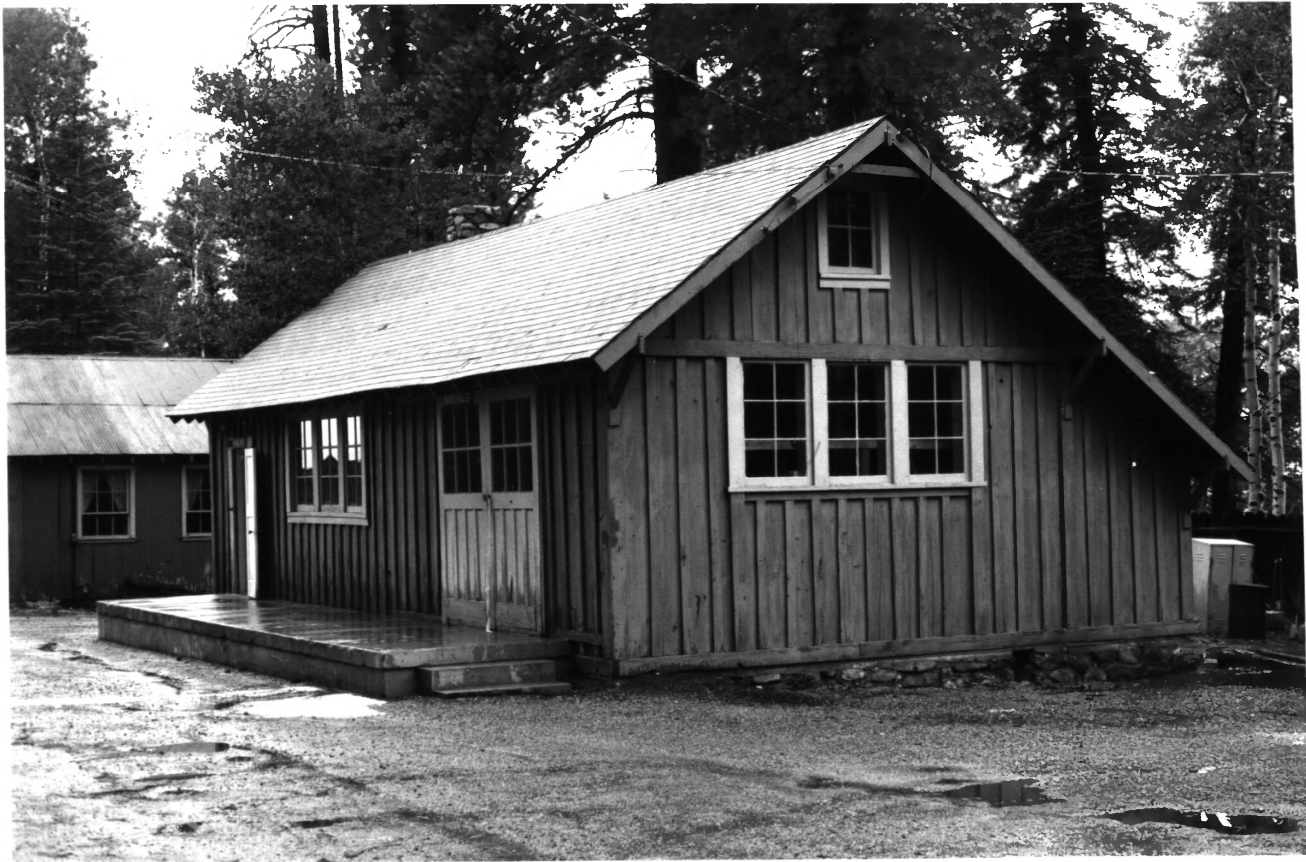
7. PHOTO 7 A 17



1. CARPENTER SHOP
NORTH RIM HEADQUARTERS AREA, GRAND CANYON
NATIONAL PARK
2. NORTH RIM OF THE GRAND CANYON, ARIZONA
3. NATIONAL PARK SERVICE PHOTO BY GORDON
CHAPPELL
4. SEPTEMBER 9, 1980
5. NEGATIVE AT NATIONAL PARK SERVICE, WESTERN
REGIONAL OFFICE
6. VIEW TO NORTHWEST OF SOUTH END AND EASTSIDE
NOTE WROUGHT IRON KINGS.
7. PHOTO 8 OF 17



1. FIRE STATION - BUILDING 126
NORTH RIM HEADQUARTERS - GRAND CANYON NATIONAL PARK
2. NORTH RIM OF THE GRAND CANYON, ARIZONA
3. NATIONAL PARK SERVICE PHOTO BY RICK THORUM
4. SEPTEMBER 9, 1980
5. NEGATIVE AT NATIONAL PARK SERVICE, WESTERN REGIONAL
OFFICE
6. VIEW TO NORTHWEST OF FRONT AND SOUTH SIDE OF
FIRE STATION
7. PHOTO 9 OF 17



1. WAREHOUSE - BUILDING 11P
NORTH RIM HEADQUARTERS AREA, GRAND CANYON
NATIONAL PARK.
2. NORTH LIM OF THE GRAND CANYON, ARIZONA
3. NATIONAL PARK SERVICE PHOTO BY GORDON CHAPPEL
4. SEPTEMBER 9, 1980
5. NEGATIVE AT NATIONAL PARK SERVICE, WESTERN
REGIONAL OFFICE
6. VIEW SOUTHWEST
7. PHOTO 10 OF 17



1. RANGER STATION, BUILDING 120
NORTH RIM HEADQUARTERS, GRAND CANYON NATIONAL PARK
2. NORTH RIM OF THE GRAND CANYON, ARIZONA
3. NATIONAL PARK SERVICE PHOTO BY RICK THORUM
4. SEPTEMBER 9, 1980
5. NEGATIVE AT NATIONAL PARK SERVICE, WESTERN
REGIONAL OFFICE
6. VIEW TO EAST
7. PHOTO 11 OF 17



1 RANGIER RESOURCE MANAGEMENT OFFICES BLDG 119
NORTH RIM HEADQUARTERS AREA,
GRAND CANYON NATIONAL PARK

2 NORTH RIM OF THE GRAND CANYON, ARIZONA

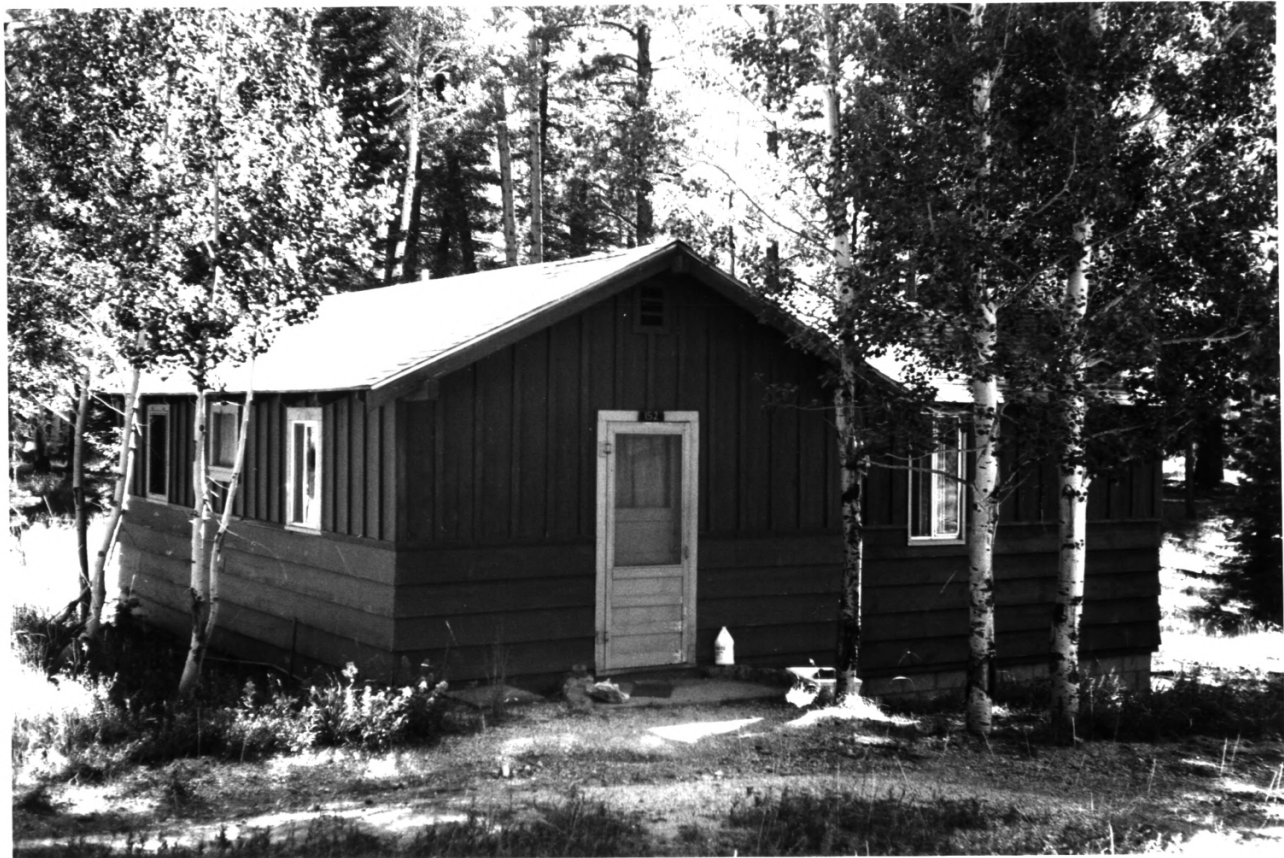
3 NATIONAL PARK SERVICE PHOTO BY GORDON CHAPPELL

4 September 9, 1980

5 NEGATIVE AT NATIONAL PARK SERVICE, WESTERN REGIONAL
OFFICE

6 VIEW TO NORTHEAST OF FRONT OF THIS MUCH ALTERED
BUILDING - ORIGINALLY AN EQUIPMENT SHED

7 PHOTO 12 15 17



1. RESIDENCE 152
NORTH RIM HEADQUARTERS AREA, GRAND CANYON
NATIONAL PARK
2. NORTH RIM OF THE GRAND CANYON, ARIZONA
3. NATIONAL PARK SERVICE PHOTO BY RICK THORUM
4. SEPTEMBER 9, 1980
5. NEGATIVE AT NATIONAL PARK SERVICE, WESTERN
REGIONAL OFFICE
6. VIEW SOUTHWEST
7. PHOTO 13 OF 17



1. RESIDENCE 150 GRAND CANYON NATIONAL PARK
NORTH RIM HEADQUARTERS AREA
2. NORTH RIM OF THE GRAND CANYON, ARIZONA
3. NATIONAL PARK SERVICE PHOTO BY RICK THORUM
4. SEPTEMBER 9, 1980
5. NEGATIVE AT NATIONAL PARK SERVICE, WESTERN
REGIONAL OFFICE
6. VIEW SOUTHWEST
7. PHOTO 14 OF 17