

United States Department of the Interior  
National Park ServiceRECEIVED  
FEB 23 1990

534

National Register of Historic Places  
Registration FormDIVISION OF  
NATIONAL REGISTER PROGRAMS  
NATIONAL PARK SERVICE

This form is for use in nominating or requesting determinations of eligibility for individual properties or districts. See instructions in *Guidelines for Completing National Register Forms* (National Register Bulletin 16). Complete each item by marking "x" in the appropriate box or by entering the requested information. If an item does not apply to the property being documented, enter "N/A" for "not applicable." For functions, styles, materials, and areas of significance, enter only the categories and subcategories listed in the instructions. For additional space use continuation sheets (Form 10-900a). Type all entries.

## 1. Name of Property

historic name Lake No. 1 Bridge  
other names/site number Haer No. AR-39

## 2. Location

street & number Avondale Road, spanning Lake No. 1 ☐ not for publication N/A  
city, town North Little Rock ☐ vicinity N/A  
state Arkansas code 05 county Pulaski code 119 zip code 72116

## 3. Classification

## Ownership of Property

- ☐
- private
- 
- ☒
- public-local
- 
- ☐
- public-State
- 
- ☐
- public-Federal

## Category of Property

- ☐
- building(s)
- 
- ☐
- district
- 
- ☐
- site
- 
- ☒
- structure
- 
- ☐
- object

## Number of Resources within Property

Contributing	Noncontributing
	buildings
	sites
1	structures
	objects
1	Total

Name of related multiple property listing:

Historic Bridges of Arkansas

Number of contributing resources previously  
listed in the National Register N/A

## 4. State/Federal Agency Certification

As the designated authority under the National Historic Preservation Act of 1966, as amended, I hereby certify that this  
☒ nomination ☐ request for determination of eligibility meets the documentation standards for registering properties in the  
National Register of Historic Places and meets the procedural and professional requirements set forth in 36 CFR Part 60.  
In my opinion, the property ☒ meets ☐ does not meet the National Register criteria. ☐ See continuation sheet.

Signature of certifying official

Arkansas Historic Preservation Program

State or Federal agency and bureau

Date

2-13-90

In my opinion, the property ☐ meets ☐ does not meet the National Register criteria. ☐ See continuation sheet.

Signature of commenting or other official

Date

State or Federal agency and bureau

## 5. National Park Service Certification

I, hereby, certify that this property is:

- ☒
- entered in the National Register.
- 
- ☐
- See continuation sheet.
- 
- ☐
- determined eligible for the National
- 
- Register.
- ☐
- See continuation sheet.
- 
- ☐
- determined not eligible for the
- 
- National Register.

- ☐
- removed from the National Register.
- 
- ☐
- other, (explain:)

Entered in the  
National Register

Melanie Byrum

4/9/90

Signature of the Keeper

Date of Action

6. Function or Use

Historic Functions (enter categories from instructions)

Transportation/Road-Related

Current Functions (enter categories from instructions)

Transportation/Road-Related

7. Description

Architectural Classification

(enter categories from instructions)

Other: Closed Spandrel, Deck Arch

Materials (enter categories from instructions)

foundation masonry

walls masonry

roof

other

Describe present and historic physical appearance.

☒ See continuation sheet

**United States Department of the Interior  
National Park Service**

**National Register of Historic Places  
Continuation Sheet**

Section number 7 Page 1

---

**SUMMARY**

Located at the western end of a scenic man-made lake in what was once the premiere residential area in North Little Rock, the Lake No. 1 Bridge is a relatively small single span masonry bridge.

**ELABORATION**

The Lake No. 1 Bridge is a masonry closed spandrel deck arch bridge, 30 feet in length and constructed with uncoursed rubble. Its single elliptical arch spans 18 feet and is comprised of five reinforced-concrete ribs exposed in the barrel ceiling. The arch barrel runs perpendicular to the longitudinal axis of the roadway. The roadway is paved with asphalt over an unknown fill material. A small rectangular hole drains the road-deck through the spandrel wall above the center of the arch. The spandrel walls extend up from the arch above the road-deck to form unembellished parapets 1.5 feet high. The Lake No. 1 Bridge is in good condition and is being used for vehicular traffic.

## 8. Statement of Significance

Certifying official has considered the significance of this property in relation to other properties:

☐ nationally ☒ statewide ☐ locally

Applicable National Register Criteria ☒ A ☐ B ☒ C ☐ D

Criteria Considerations (Exceptions) ☐ A ☐ B ☐ C ☐ D ☐ E ☐ F ☐ G

Areas of Significance (enter categories from instructions)

Transportation

Engineering

Period of Significance

Late 1930's

Significant Dates

Late 1930's

Cultural Affiliation

N/A

Significant Person

N/A

Architect/Builder

Builder: Metropolitan Trust Company

Architect: Carmean, Frank

State significance of property, and justify criteria, criteria considerations, and areas and periods of significance noted above.

☒ See continuation sheet



## 9. Major Bibliographical References

See Historic Bridges of Arkansas, Multiple Property Nomination, Section H.

### Previous documentation on file (NPS):

- ☐ preliminary determination of individual listing (36 CFR 67) has been requested
- ☐ previously listed in the National Register
- ☐ previously determined eligible by the National Register
- ☐ designated a National Historic Landmark
- ☐ recorded by Historic American Buildings Survey # \_\_\_\_\_
- ☒ recorded by Historic American Engineering Record # HAER No. AR-39

☐ See continuation sheet

### Primary location of additional data:

- ☒ State historic preservation office
- ☐ Other State agency
- ☒ Federal agency
- ☐ Local government
- ☐ University
- ☐ Other

### Specify repository:

U.S. Library of Congress

## 10. Geographical Data

Acreage of property Less than one acre

### UTM References

A 

1	5	5	6	8	4	2	0	3	8	4	9	7	0	0
Zone			Easting					Northing						

C 

--	--	--	--	--	--	--	--	--	--	--	--	--	--	--

B 

Zone			Easting					Northing						

D 

--	--	--	--	--	--	--	--	--	--	--	--	--	--	--

☐ See continuation sheet

### Verbal Boundary Description

Beginning at a point approximately 25 feet north of the intersection of Waterside and Avondale Streets, the Lake No. 1 Bridge starts here at the south abutment, then continues north across the main span for approximately 30 feet, where it terminates at the north abutment.

☐ See continuation sheet

### Boundary Justification

The boundary includes the main span and abutments that are historically associated with this property.

☐ See continuation sheet

## 11. Form Prepared By

name/title Michael Swanda, Survey Coordinator

organization Arkansas Historic Preservation Program date February 5, 1990

street & number 225 East Markham Street telephone (501) 371-2763

city or town Little Rock state Arkansas zip code 72201

**United States Department of the Interior  
National Park Service**

**National Register of Historic Places  
Continuation Sheet**

Section number 8 Page 1

---

**SUMMARY**

The Lake No. 1 Bridge is a rare Arkansas example of a privately designed and constructed vehicular bridge. Built as a masonry arch bridge whose design followed a rural "Rustic" theme, it was an important part of what was then the most innovative residential development project in the state. Mr. Justin Matthews, a prominent local entrepreneur, financed the construction of Lake No. 1 Bridge as well as the Lakeshore Drive Bridge (HAER No. AR-52) and the Edgemere Street Bridge (HAER No. AR-40). As such, the Lake No. 1 Bridge is nominated under Criteria A and C with statewide significance.

**ELABORATION**

Lake No. 1 Bridge is one of eight known masonry closed spandrel deck arch bridges documented in Arkansas and built during the Arkansas Highway and Transportation Department Era: 1923-1939. It was constructed as part of the \$250,000 Lakewood Residential Development Project. The exact date of construction is unknown. This trend-setting residential development project was conceived by Mr. Justin Matthews through his Metropolitan Trust Company of North Little Rock. Matthews was an influential and successful Arkansan, a past member of the Arkansas Highway Commission and a local residential developer. Seen for the first time in central Arkansas, his new and innovative ideas concerning landscape and recreational philosophy was realized with the construction of the Lakewood subdivision, which included an innovative system of recreational lakes, sculpture, open spaces and parks. Lake No. 1 and the Lake No. 1 Bridge were a part of his vision. It is very likely that the Metropolitan Trust Company's design architect, Frank Carmean, designed this bridge in the rustic architectural theme that was so consistent throughout this development. The Lake No. 1 Bridge also retains additional historical significance as a privately conceived, financed and constructed masonry bridge. The majority of masonry bridges constructed at this time were financed and supported with the aide of the federal government.



2/23/90

United States Department of the Interior  
National Park ServiceNational Register of Historic Places  
Continuation Sheet

Section number \_\_\_\_\_ Page \_\_\_\_\_

Historic Bridges of Arkansas MPS	Baxter County, et al.	Date Listed
COVER <b>Substantive Review</b>		4/6/90
1. Cotter Bridge <b>Substantive Review</b>		4/4/90
2. North Fork Bridge	Entered in the National Register	4/9/90
3. Beaver Bridge <b>Substantive Review</b>		4/9/90
4. Mulladay Hollow Bridge <b>Substantive Review</b>		4/6/90
5. Little Missouri River Bridge <b>Substantive Review</b>		4/9/90
6. Cedar Creek Bridge	Entered in the National Register	4/9/90
7. Lee Creek Bridge (AR 220)		4/9/90
8. Lee Creek Bridge (AR 59) <b>Substantive Review</b>		7/6/90
9. South Fork Bridge <i>SR</i> <b>Substantive Review</b>		4/9/90
10. Eight Mile Creek Bridge <b>Substantive Review</b>		4/6/90
11. Newport Bridge		4/9/90
12. Big Piney Creek Bridge <del><b>Substantive Review</b></del>		4/9/90
13. Cache River Bridge		4/9/90
14. St. Louis-San Francisco Overpass	Entered in the National Register	4/9/90
15. Red River Bridge <b>Substantive Review</b>		4/4/90
16. Buffalo River Bridge	Entered in the National Register.	4/9/90
17. Harp Creek Bridge		4/9/90
18. Cypress Creek Bridge <b>Substantive Review</b>		4/9/90
19. Mountain Fork Bridge <b>Substantive Review</b>		4/9/90
20. White River Bridge at DeValls Bluff	Entered in the National Register	4/9/90
21. Edgemere Street Bridge	Entered in the National Register	4/9/90
22. Lake No. 1 Bridge	Entered in the National Register	4/9/90

UNITED STATES DEPARTMENT OF THE INTERIOR  
NATIONAL PARK SERVICE

NATIONAL REGISTER OF HISTORIC PLACES  
EVALUATION/RETURN SHEET

REQUESTED ACTION: NOMINATION

PROPERTY Lake No. 1 Bridge  
NAME:

MULTIPLE Historic Bridges of Arkansas MPS  
NAME:

STATE & COUNTY: ARKANSAS, Pulaski

DATE RECEIVED: 2/23/90

DATE OF PENDING LIST: 3/06/90

DATE OF 16TH DAY: 3/22/90

DATE OF 45TH DAY: 4/09/90

DATE OF WEEKLY LIST:

REFERENCE NUMBER: 90000534

NOMINATOR: STATE

REASONS FOR REVIEW:

APPEAL: N DATA PROBLEM: N LANDSCAPE: N LESS THAN 50 YEARS: N

OTHER: N PDIL: N PERIOD: N PROGRAM UNAPPROVED: N

REQUEST: N SAMPLE: N SLR DRAFT: N NATIONAL: N

COMMENT WAIVER: N

☒ ACCEPT ☐ RETURN ☐ REJECT 4/9/90 DATE

Entered in the  
National Register

ABSTRACT/SUMMARY COMMENTS:

RECOM./CRITERIA

REVIEWER

DISCIPLINE

DATE

DOCUMENTATION see attached comments Y/N see attached SLR Y/N



CLASSIFICATION

\_\_\_count \_\_\_resource type

STATE/FEDERAL AGENCY CERTIFICATION

FUNCTION

\_\_\_historic \_\_\_current

DESCRIPTION

\_\_\_architectural classification  
\_\_\_materials  
\_\_\_descriptive text

SIGNIFICANCE

Period Areas of Significance--Check and justify below

Specific dates Builder/Architect  
Statement of Significance (in one paragraph)

\_\_\_summary paragraph  
\_\_\_completeness  
\_\_\_clarity  
\_\_\_applicable criteria  
\_\_\_justification of areas checked  
\_\_\_relating significance to the resource  
\_\_\_context  
\_\_\_relationship of integrity to significance  
\_\_\_justification of exception  
\_\_\_other

BIBLIOGRAPHY

GEOGRAPHICAL DATA

\_\_\_acreage \_\_\_verbal boundary description  
\_\_\_UTMs \_\_\_boundary justification

ACCOMPANYING DOCUMENTATION/PRESENTATION

\_\_\_sketch maps \_\_\_USGS maps \_\_\_photographs \_\_\_presentation

OTHER COMMENTS

Questions concerning this nomination may be directed to

Phone

Signed Date



LAKE NO. 1 BRIDGE

NORTH LITTLE ROCK, ARKANSAS

PHOTOGRAPHER, MICHAEL SWANOA

JULY, 1988

NEGATIVE ON FILE AT AMPP

VIEW LOOKING NORTHWEST





LAKE NO. 1 BRIDGE

NORTH LITTLE ROCK, ARKANSAS

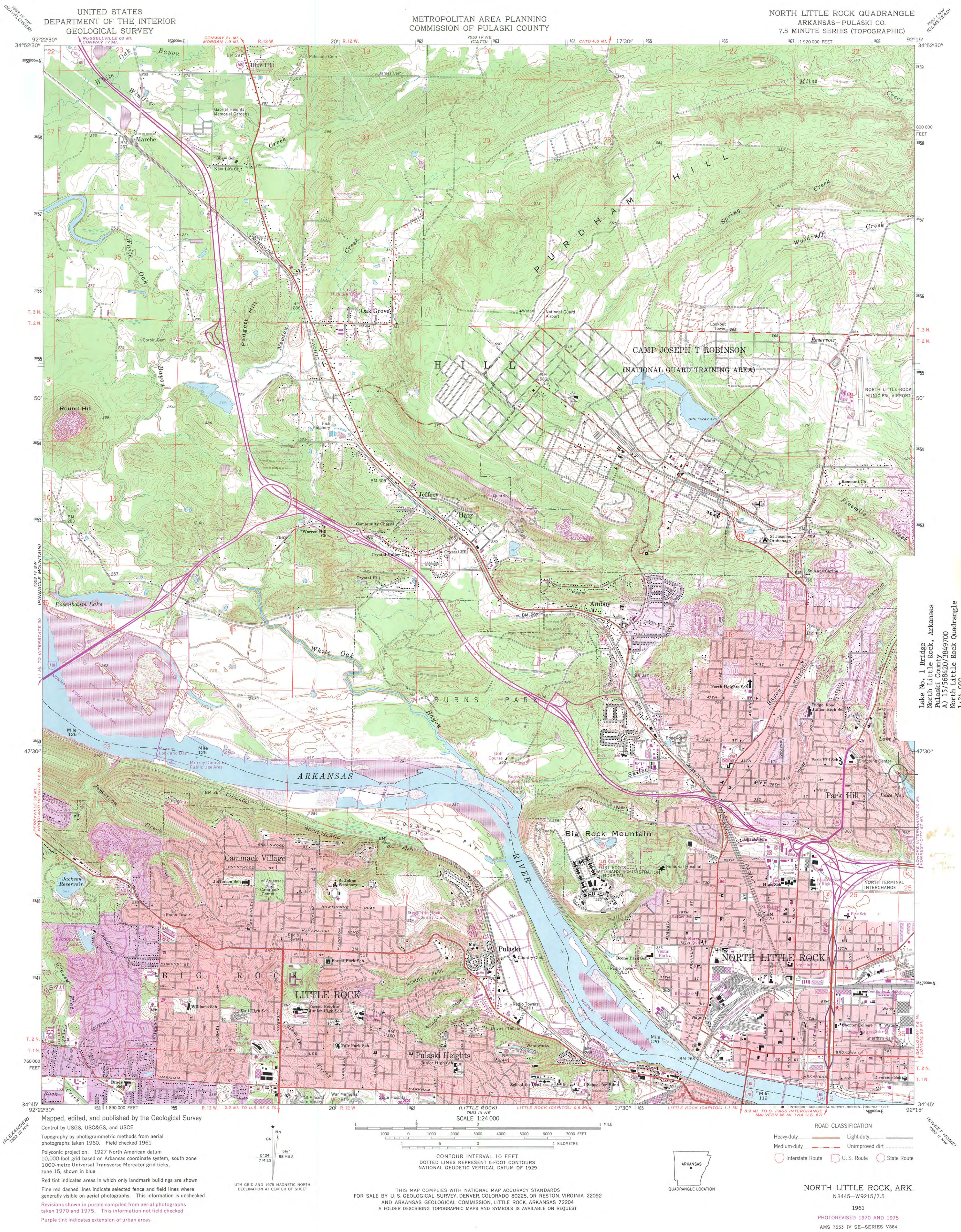
PHOTOGRAPHER, MICHAEL SWANDA

JULY, 1988

NEGATIVE ON FILE AT AHPP

VIEW LOOKING NORTHWEST



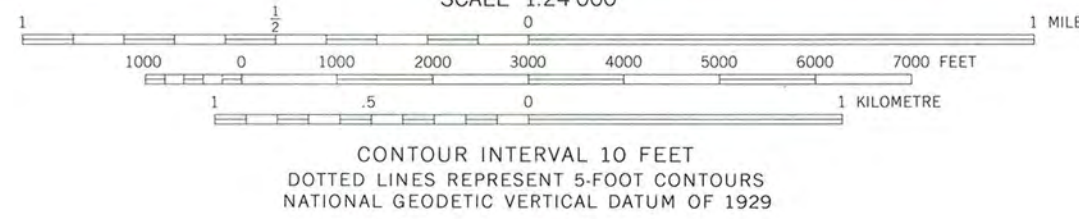


UNITED STATES  
DEPARTMENT OF THE INTERIOR  
GEOLOGICAL SURVEY

METROPOLITAN AREA PLANNING  
COMMISSION OF PULASKI COUNTY

NORTH LITTLE ROCK QUADRANGLE  
ARKANSAS-PULASKI CO.  
7.5 MINUTE SERIES (TOPOGRAPHIC)

Mapped, edited, and published by the Geological Survey  
Control by USGS, USC&GS, and USCE  
Topography by photogrammetric methods from aerial  
photographs taken 1960. Field checked 1961  
Polyconic projection. 1927 North American datum  
10,000-foot grid based on Arkansas coordinate system, south zone  
1000-metre Universal Transverse Mercator grid ticks,  
zone 15, shown in blue  
Red tint indicates areas in which only landmark buildings are shown  
Fine red dashed lines indicate selected fence and field lines where  
generally visible on aerial photographs. This information is unchecked  
Revisions shown in purple compiled from aerial photographs  
taken 1970 and 1975. This information not field checked  
Purple tint indicates extension of urban areas



THIS MAP COMPLIES WITH NATIONAL MAP ACCURACY STANDARDS  
FOR SALE BY U. S. GEOLOGICAL SURVEY, DENVER, COLORADO 80225, OR RESTON, VIRGINIA 22092  
AND ARKANSAS GEOLOGICAL COMMISSION, LITTLE ROCK, ARKANSAS 72204  
A FOLDER DESCRIBING TOPOGRAPHIC MAPS AND SYMBOLS IS AVAILABLE ON REQUEST



ROAD CLASSIFICATION  
Heavy-duty ————— Light-duty —————  
Medium-duty ————— Unimproved dirt —————  
Interstate Route U. S. Route State Route

NORTH LITTLE ROCK, ARK.  
N 3445—W 9215/7.5

1961  
PHOTOREVISED 1970 AND 1975  
AMS 7553 IV SE—SERIES V884

Lake No. 1 Bridge  
North Little Rock, Arkansas  
Pulaski County  
A) 15/568420/3849700  
North Little Rock Quadrangle  
1:24,000