



Buck, Charles Amos, House

211 Buck St.

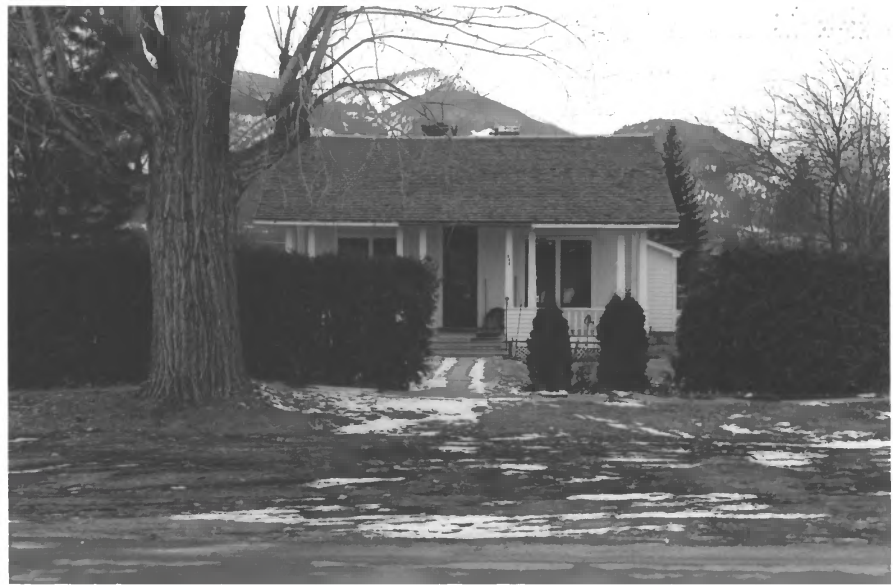
Stevensville, ^{MDA} MT

Ravalli Co.

MPD: Historic Resources of Stevensville: 1866-1941

view: east elevation 12-90

State Historic Preservation Office
Montana Historical Society
225 N. Roberts
Helena, MT 59620-9990



Buck, Charles Amos, House

211 Buck St.
Stevensville, ^{MDA} MT

Ravalli Co.

MPD: Historic Resources of Stevensville, MT:
1866-1941

view: east elevation 12-90

State Historic Preservation Office
Montana Historical Society
225 N. Roberts
Helena, MT 59620-9990



Buck, Charles Amos, House

211 Buck Ave

Stevensville^{MTA}, MT

Rawalli Co.

MPD: Historic Resources of Stevensville, MT: 1866-1941

view: looking northeast at the ice house 12-90

State Historic Preservation Office
Montana Historical Society
225 N. Roberts
Helena, MT 59620-9990



Buck, Charles Amos, House

211 Buck St.
Stevensville, ^{HER} MT

Ravalli Co.

MPO: Historic Resources of Stevensville: 1866-1941

view: looking west at oldest apple tree in Stevensville,
planted in 1879. Ice house and stable in background.

State Historic Preservation Office
Montana Historical Society

225 N. Roberts
Helena, MT 59620-9990

12-90



Buck, Charles Amos, House

211 Buck Ave.

Stevensville, ^{MRS} MT

Ravalli Co.

MPO: Historic Resources of Stevensville, MT: 1866-1941

view: Looking east-northeast at the concrete block
apple storage house, the stable and warehouse.

12-90

State Historic Preservation Office

Montana Historical Society

225 N. Roberts

Helena, MT 59620-9990