

# 1

H 9  
S S 2

Rutland Downtown Historic District  
Rutland, VT

Credit: Vermont Historical Society

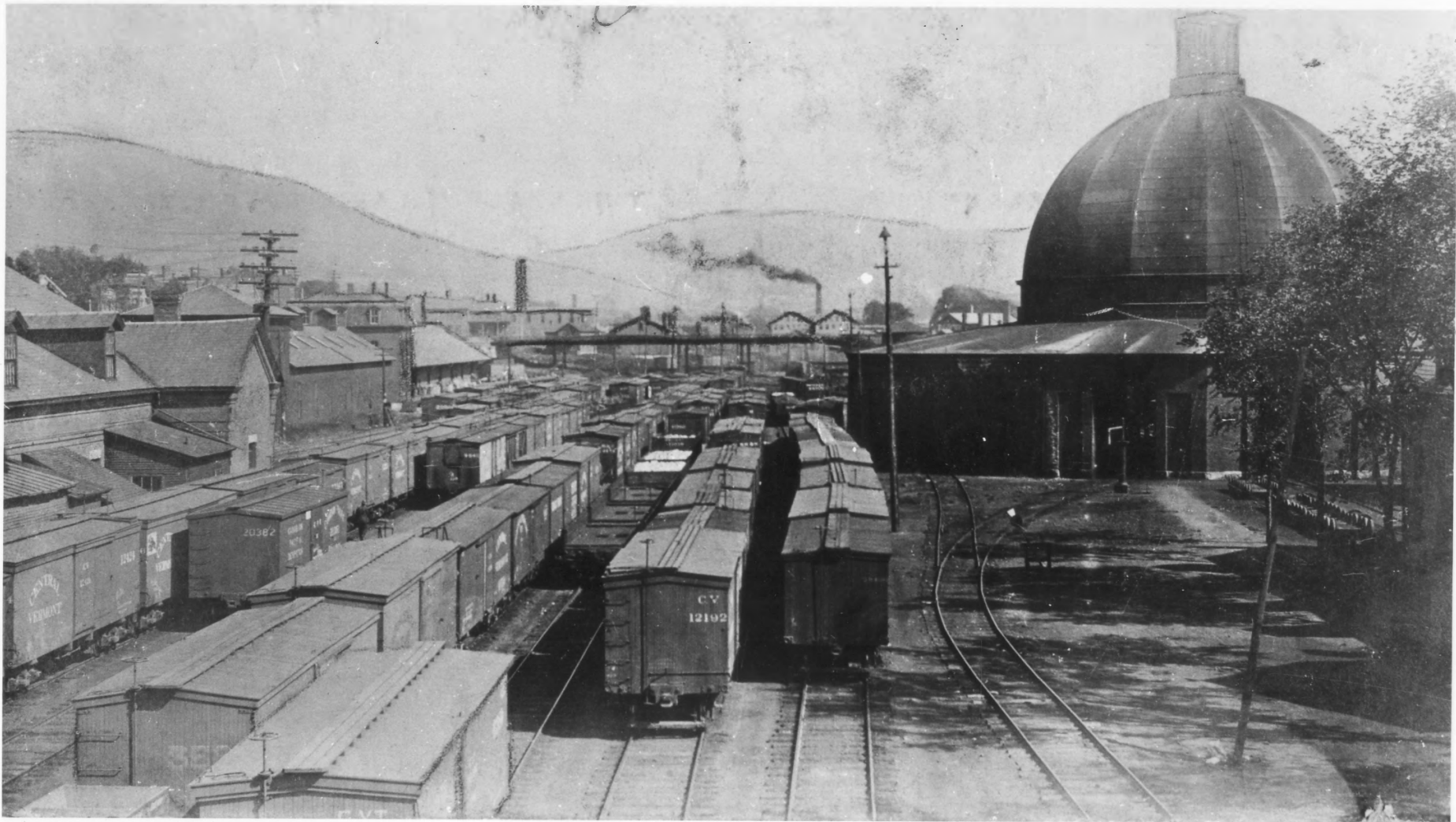
Date: Circa 1900

Negative filed at Vermont Division for  
Historic Preservation (#77-A-288)

Description: Overview of north half of  
District, showing Willow St. (left) &  
West St. (right), looking west.

Photograph 1/35 AUG . 2 1980

NOV 1 1978



Rutland Downtown Historic District

Rutland, VT

Credit: Rutland Historical Society

Date: Circa 1890 **AUG 22 1980**

Negative filed at Vermont Division for  
Historic Preservation

Description: Former Rutland Railroad

Terminal Complex, showing train shed (L)

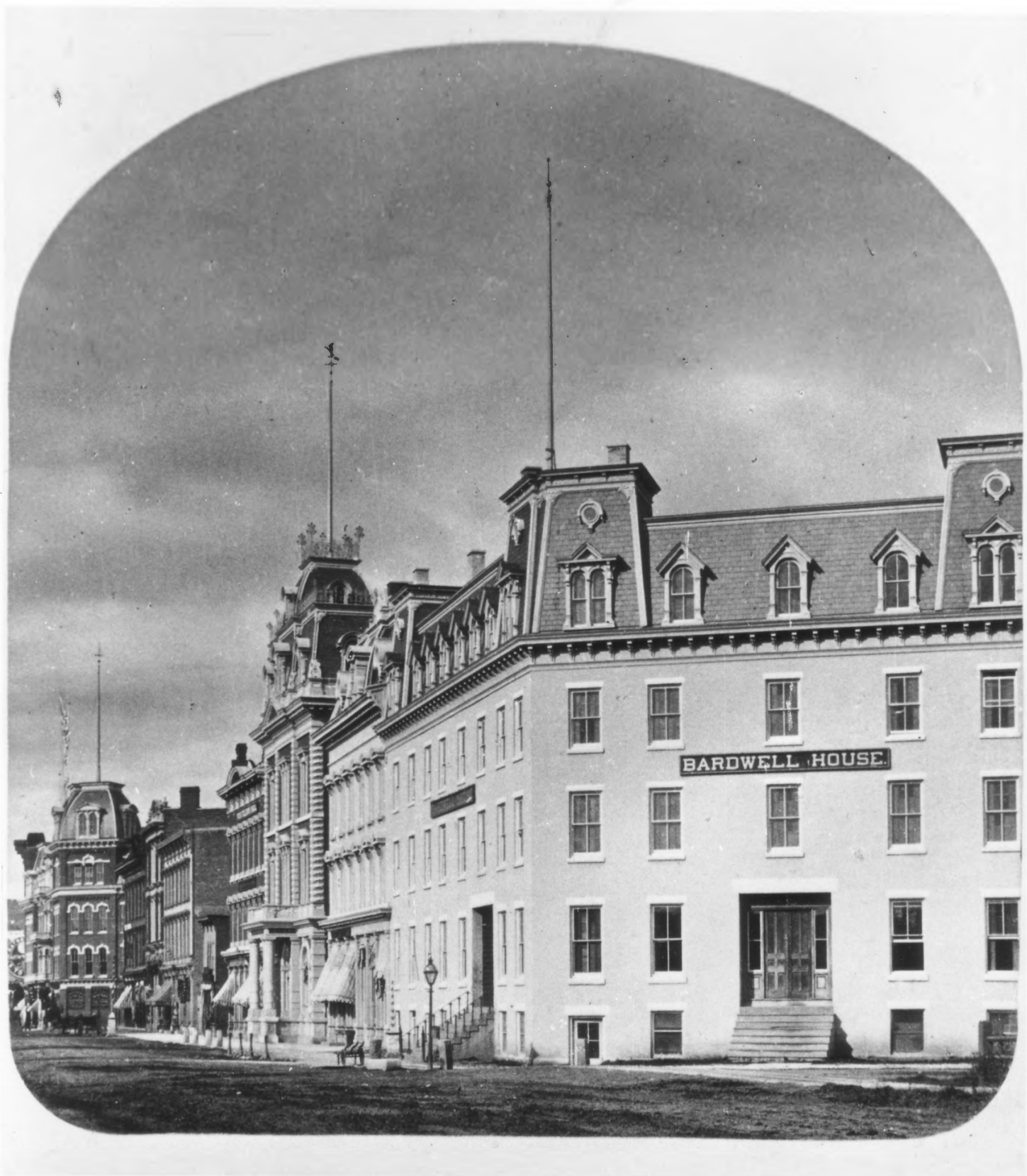
switching yard, and domed enginehouse,

looking southeast. None extant.

Photograph 2/35

**NOV 1 1978**





BARDWELL HOUSE.

Rutland Downtown Historic District  
Rutland, VT

NOV 1 1976

Credit: Rutland Historical Society,

Date: Circa 1880

Negative filed at Vermont Division for  
Historic Preservation

Description: Merchants Row streetscape  
from Washington St., showing (L) demo-  
lished Bates House & Rutland Savings  
Bank (#8) to Bardwell Hotel (#2),  
looking northwest. Photograph 3/35

AUG 22 1980

E#



#4

282  
A

AUG 22 1980

Rutland Downtown Historic District  
Rutland, VT  
Credit: Vermont Historical Society  
Date: Circa 1915  
Negative filed at Vermont Division for  
Historic Preservation  
Description: Merchants Row streetscape  
from Evelyn St., showing (L) Clement  
Bank (#85) to Landon Block (#79) &  
(R) Hulett Block (#40), looking NW.  
Photograph 4

NOV 1 1978





#5

288  
A

AUG 22 1980

Rutland Downtown Historic District  
Rutland, VT  
Credit: Vermont Historical Society  
Date: Circa 1915  
Negative filed at Vermont Division for  
Historic Preservation  
Description: Center St. streetscape  
from Wales St. showing (L) Mead Bldg.  
(#39) to store front #31 & demolished  
Berwick Hotel, looking west.  
Photograph 5/35

NOV 1 1978



McAULIFFE  
The Red Port

McAULIFFE

McAULIFFE

VERMONT TRANSIT

THE RED PORT

BARNETT'S  
BICYCLE REPAIR



Rutland Downtown Historic District  
Rutland, VT

Credit: Hugh H. Henry

Date: April 1978

Negative filed at Vermont Division for  
Historic Preservation

Description: Merchants Row from (L)  
Mead Building (#39) to Service Bldg.  
(#3), looking north.

Photograph 6/35 NOV 1 1978  
AUG 22 1980





#7

Rutland Downtown Historic District  
Rutland, VT  
Credit; Hugh H. Henry  
Date: April 1978  
Negative filed at Vermont Division for  
Historic Preservation  
Description: Evelyn St. (L) & Merchants  
Row (R) streetscape, looking northwest  
Photograph 7/35

AUG 22 1980

NOV 1 1978



#8

Rutland Downtown Historic District  
Rutland, VT

Credit: Hugh H. Henry    AUG 22 1980

Date: April 1978

Negative filed at Vermont Division for  
Historic Preservation

Description: City Hall (#1), looking  
southeast.

Photograph 8/35 NOV 1 1978





#9

Rutland Downtown Historic District  
Rutland, VT

Credit: Hugh H. Henry      AUG 22 1980

Date: April 1978

Negative filed at Vermont Division for  
Historic Preservation

Description: Bardwell Hotel (#2),  
looking northeast.

NOV 1 1978

Photograph 9/35



THE  
BED POST

Jean's Beauty Salon

TRVET BUILDING

CABLE TV

BARDWELL

BARDWELL  
AUCTION  
ENTRANCE

Rutland Downtown Historic District  
Rutland, VT

Credit: Hugh H. Henry

Date: April 1978

Negative filed at Vermont Division for  
Historic Preservation

Description: Service Building (#3),  
looking northeast

AUG 22 1980

Photograph 10/35

NOV 1 1978

111-7

01#





5  
52h

Rutland Downtown Historic District

Rutland, VT

AUG 22 1980

Credit: Richard Cote NOV 1 1978

Date: ? 1977

Negative filed at Vermont Division for  
Historic Preservation

Description: Center St. from commer-  
cial block #13 to Rutland Savings Bank  
(#8) looking southwest.

Photograph 11/35



F.O.E.

CARRIE NATION'S

LADIES NOTE

TUESDAY 9-11 START

Whitney's

The Market

Rutland Downtown Historic District  
Rutland, VT

Credit: Hugh H. Henry

Date: April 1978

Negative filed at Vermont Division for  
Historic Preservation

Description: Center St. from commer-  
cial block #16 to Rutland Savings Bank  
(#8), looking southwest.

Photograph ~~12/33~~ AUG 22 1980

NOV 1 1978





BARDWELL

BARDWELL  
MOTOR  
ENTRANCE

Rutland Downtown Historic District  
Rutland, VT

Credit: Hugh H. Henry

Date: April 1978

Negative filed at Vermont Division for  
Historic Preservation

Description: Masonic Temple (#19),  
looking northwest.

Photograph 13/35 NOV 1 1978  
AUG 22 1980



METZGER BROTHERS



Rutland Downtown Historic District  
Rutland, VT

NOV 1 1978

Credit: Hugh H. Henry

Date: April 1978

Negative filed at Vermont Division for  
Historic Preservation

Description: Metzger Brothers Block  
(#26), looking southeast.

Photograph

14/35

AUG 22 1980





BACCO SHOP

SAM FRANK INC

WOLK'S  
Home Fashions

Wolk's  
Home Fashions

Home Fashions

BARCLAY'S

Rutland Downtown Historic District  
Rutland, VT                      AUG 22 1980  
Credit: Hugh H. Henry        NOV 1 1978  
Date: April 1978  
Negative filed at Vermont Division for  
Historic Preservation  
Description: Center St. from (L) comm-  
ercial block #36 to store front #31,  
looking northeast

Photograph 15/35

1980



Rutland Downtown Historic District  
Rutland, VT

Credit: Hugh H. Henry

Date: April 1978

Negative filed at Vermont Division for  
Historic Preservation

Description: (from L) Hulett Block (#  
40) to Tuttle-Caverly Block (#37),  
looking northeast

AUG 22 1980

Photograph 16/35

NOV 1 1978





S MUSIC

Big L

DISCOUNT  
HEALTH & BEAUTY AIDS

Candy  
Stationery  
Housewares

David's  
SHOES

DAVID'S

MORTON'S SHOES

FREEMAN'S

66

57

Rutland Downtown Historic District  
Rutland, VT

Credit: Hugh H. Henry

Date: July 1978

Negative filed at Vermont Division for  
Historic Preservation

Description: (from L) Buildings #43-41  
looking southeast

Photograph 17/35 NOV 1 1978

AUG 22 1980

276



CARBINE-ANDERSON INC.

CARBINE ANDERSON INC

CARBINE ANDERSON INC

CARBINE ANDERSON INC

CARBINE ANDERSON INC



Rutland Downtown Historic District  
Rutland, VT

Credit: Hugh H. Henry

Date: April 1978

Negative filed at Vermont Division for  
Historic Preservation

Description: Gryphon Building (#46) &  
'New' Gryphon Building (#45), looking  
southeast

Photograph 18





Rutland Downtown Historic District  
Rutland, VT

Credit: Hugh H. Henry      AUG 22 1980

Date: July 1978

Negative filed at Vermont Division for  
Historic Preservation

Description: Rutland Herald Building  
(#52), looking northwest.

Photograph

19/35

NOV 1 1978



ST. JOHN  
UNIVERSITY  
A Building Erected  
at the  
cost of  
\$100,000.

Rutland Downtown Historic District  
Rutland, VT

Credit: Hugh H. Henry

Date: April 1978

Negative filed at Vermont Division for  
Historic Preservation

Description: Unitarian-Universalist  
Church (#58), looking northeast.

Photograph 20/35 NOV 1 1978  
AUG 22 1980







Rutland Downtown Historic District  
Rutland, VT

Credit: Hugh H. Henry

Date: April 1978

Negative filed at Vermont Division for  
Historic Preservation

Description: Merchants Row from (L)  
store front #67 to commercial block  
#60, looking northeast.

Photograph 21/35

NOV 1 1978  
AUG 22 1980



Vermont Contract Furnishings Inc.

C.B. BOND COMPANY INC.

SAL

Rutland Downtown Historic District

Rutland, Vt

Credit: Hugh H. Henry · NOV 1 1978

Date: April 1978

AUG 22 1980

Negative filed at Vermont Division for  
Historic Preservation

Description: Store fronts #65 (L) and  
64, looking northeast.

Photograph 22/35



MARBLE SAVINGS BANK

S BANK

W.C.

Rutland Downtown Historic District

Rutland, VT

Credit: Hugh H. Henry

Date: April 1978

Negative filed at Vermont Division for  
Historic Preservation

Description: Royce House (#73), look-  
ing northwest

Photograph

23/35

NOV 1 1978

AUG 22 1980





Rutland Downtown Historic District  
Rutland, VT

Credit: Hugh H. Henry

Date: April 1978

Negative filed at Vermont Division for  
Historic Preservation

Description: (from L) Marble Savings  
Bank (#78) to Bruzza-Thrall Block (#75)  
looking northwest.

AUG 22 1980

Photograph 24/35 NOV 1 1978



Rullans  
RESTAURANT

MONTGOMERY'S

PHARMACY  
BEAUCHAMP & O'RO

STEREO T

Rutland Downtown Historic District  
Rutland, VT

Credit: Hugh H. Henry AUG 22 1980

Date: April 1978

Negative filed at Vermont Division for  
Historic Preservation

Description: Landon Block (#79), look-  
ing southwest

Photograph 25/35 NOV 1 1978



TRUST COMPANY

Hutton  
McNeil and Reedy  
M'NEIL & REEDY

BOND  
CLOTHES

HOWARD BANK

General  
COLLECTIBLES



Rutland Downtown Historic District  
Rutland, VT

Credit: Hugh H. Henry

AUG 22 1980

Date: April 1978

NOV 1 1978

Negative filed at Vermont Division for  
Historic Preservation

Description: Merchants Row from (L)  
commercial block #89 to Tenement house  
#70, showing metal sheathing removed  
from buildings #80-82 in July 1978,  
looking NW. Photograph 26/35



Rutland Downtown Historic District  
Rutland, VT

Credit: Hugh H. Henry

Date: July 1978

Negative filed at Vermont Division for  
Historic Preservation

Description: Rutland Opera House (#82)  
and buildings #81-80 during 1978 reha-  
bilitation, looking northwest.

Photograph ~~27~~ AUG 22 1980

NOV 1 1978

265



Rutland Downtown Historic District  
Rutland, VT

Credit: Hugh H. Henry

Date: July 1978

Negative filed at Vermont Division for  
Historic Preservation

Description: Clement Bank (#85), look-  
ing northwest.

Photograph 28/35 NOV 1 1978

276





dl  
2

Rutland Downtown Historic District  
Rutland, VT

Credit: Hugh H. Henry AUG 22 1980

Date: July 1978

Negative filed at Vermont Division for  
Historic Preservation

Description: Former Hotel (#90) and  
building #89, looking north.

Photograph 29/NOV 1 1978  
35



Rutland Downtown Historic District  
Rutland, VT

Credit: Hugh H. Henry

AUG 22 1980

NOV 1 1978

Date: April 1978

Negative filed at Vermont Division for  
Historic Preservation

Description: (from L) Double store  
fronts (#93) to former hotel (#90),  
looking southwest.

Photograph 30/35





Rutland Downtown Historic District

Rutland, VT

Credit: Hugh H. Henry

Date: April 1978

Negative filed at Vermont Division for  
Historic Preservation

Description: U.S. Post Office & Court-  
house (#97), looking northeast.

Photograph 31/35

NOV 1 1978

**BREGGS**  
ROLLER SKATING  
REAR ENTRANCE

AIR CONDITIONED

STATE OF VERMONT  
DEPARTMENT OF  
EMPLOYMENT  
SECURITY



Rutland Downtown Historic District  
Rutland, VT

Credit: Hugh H. Henry

Date: April 1978

Negative filed at Vermont Division for  
Historic Preservation

Description: Cootey Building (#98),  
looking northeast.

Photograph 32/35

NOV 1

AUG 22 1980  
1978



Rutland Downtown Historic District  
Rutland, VT  
Credit: Hugh H. Henry  
Date: September 1978  
Negative filed at Vermont Division for  
Historic Preservation  
Description: Former railroad freight  
car repair shop (#104), looking south

Photograph 33/35





b-111

Rutland Downtown Historic District  
Rutland, VT

NOV 1 1978

Credit: Hugh H. Henry

AUG 22 1980

Date: May 1978

Negative filed at Vermont Division for  
Historic Preservation

Description: Site of former railroad  
switching yard, showing (R) former rail  
road repair shop (#104) & non-contribu-  
tory buildings #105-107, looking SW.

Photograph 34/35



Rutland Downtown Historic District  
Rutland, VT

Credit: Hugh H. Henry

Date: September 1979

AUG 22 1980

Negative filed at Vermont Division for  
Historic Preservation

View N of E side of Wales Street N of Washing-  
ton Street. 35/35 24.25.24

29-A-35







79-A-35

Rutland Downtown Historic District  
Rutland, VT

Credit: Hugh H. Henry

AUG 2 1980

Date: September 1979

Negative filed at Vermont Division for  
Historic Preservation

View E of N side of Center St. E of Wales St.

Photograph 36/35

36 29 25 27



29-A-35

Rutland Downtown Historic District  
Rutland, VT

Credit: Hugh H. Henry **AUG 22 1980**

Date: September 1979

Negative filed at Vermont Division for  
Historic Preservation

View E of S side of Willow St.

Photograph 37/35



Rutland Downtown Historic District  
Rutland, VT

Credit: Hugh H. Henry

AUG 22 1980

Date: April 1978

Negative filed at Vermont Division for  
Historic Preservation

Description: Gryphon Building (#46) &  
'New' Gryphon Building (#45), looking  
southeast.

Photograph 38/35 NOV 1 1978