

Boggersberg

Cap Jesper

on 1911

□ □ □ □

□ □ □ □

□

□ □ □ □ □

paraisien

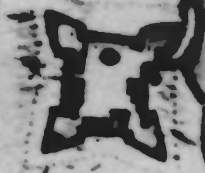
□ □ □

kyreanien

□

17

CHRISTIAN'S  
FORT



brum

water fort



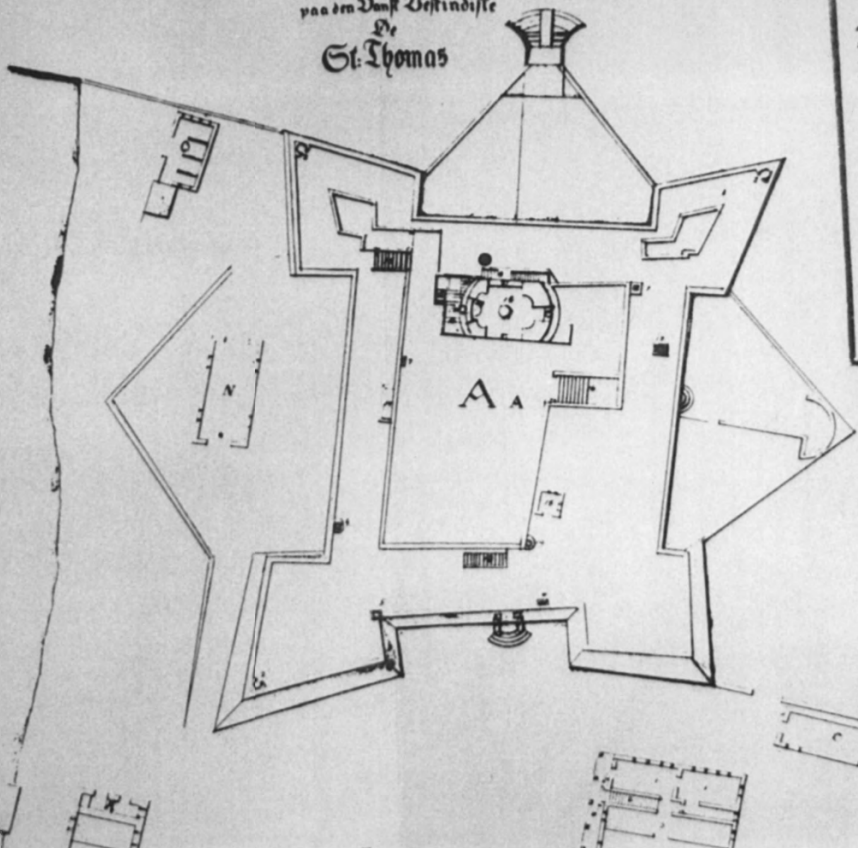
Truide

fe d'nois

- Photo 2
1. Fort Christian
  2. Charlotte Amalie, St. Thomas, USVI
  3. M. Barnes
  4. May 1997
  5. Neg - NPS Atlanta
  6. View of late 17th map of St Thomas showing Fort Christian & Skytsborg tower on Baggerberg hill to the north of the fort.
  7. Photo. I

Grundelegning

Christians Fort med <sup>ny</sup> dertil hørende Bygninger  
 paa den Dansk Vestindiske  
 Øi  
 St. Thomas



A. D. *Indværelse for Kommandanten*

B. Indværelse for Løjtnanten

1. Officers Kvarter
2. Kjøkken med Gang til 4
3. Kvartals Kvarter
4. Soldaternes Sædehus

C. Kaserne

D. Kaserne

E. Kaserne

F. Kaserne

G. Kaserne

H. Kaserne

I. Kaserne

K. Kaserne

L. Kaserne

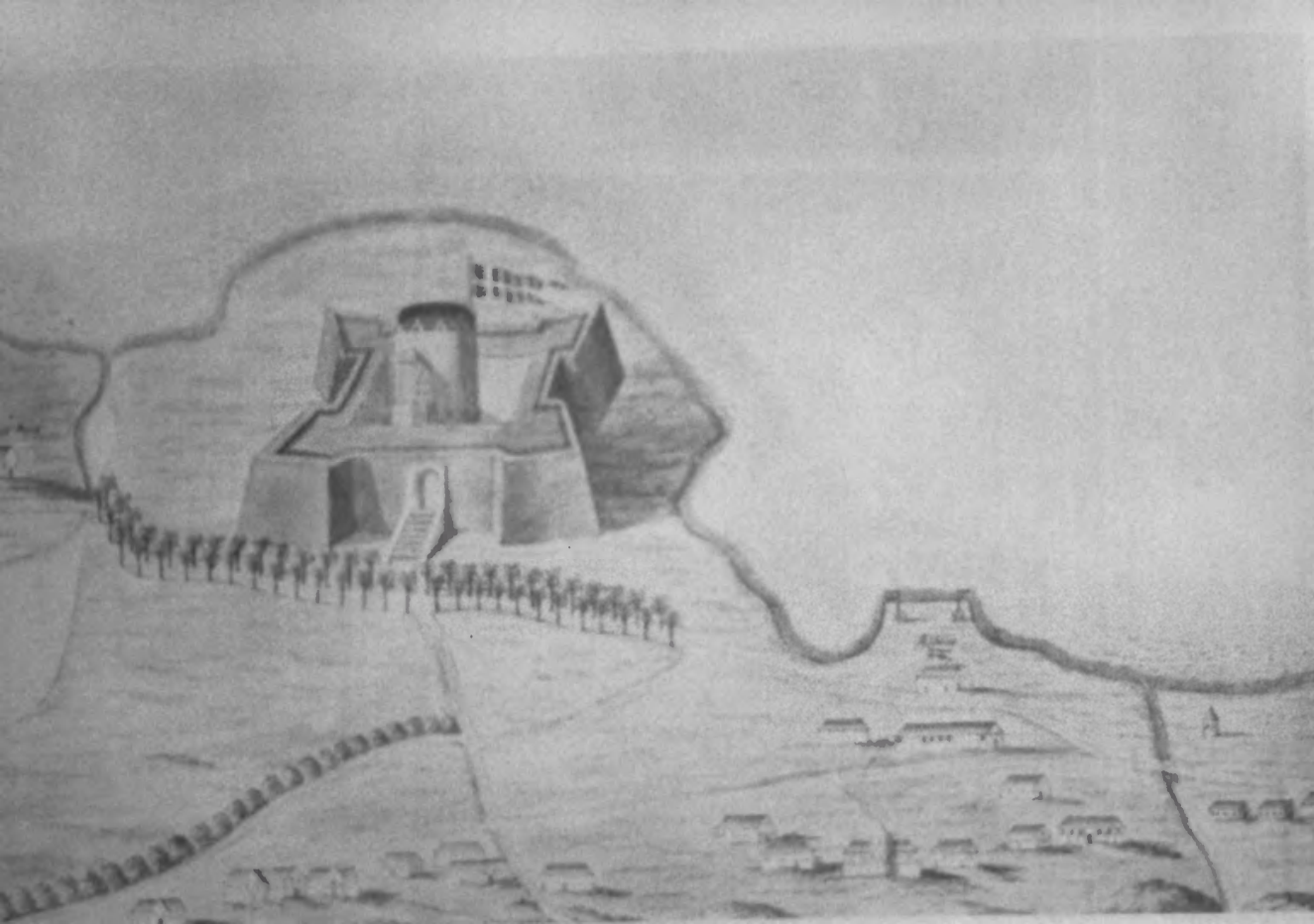
M. Kaserne

N. Kaserne

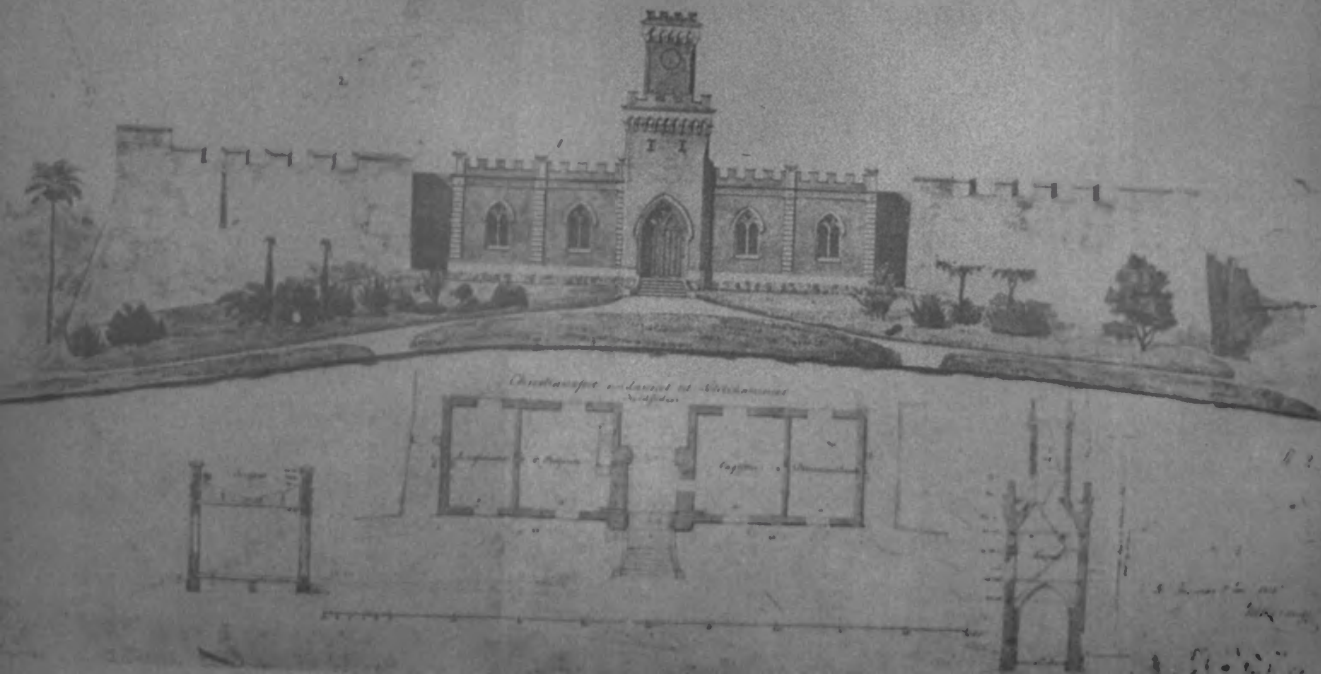
O. Kaserne

P. Kaserne

1. FORT CHRISTIAN
2. Charlotte Amalie, St. Thomas USVI
3. M. Barnes
4. MAY 1997
5. Neg - NPS Atlanta
6. View of 1827 plan of fort showing ravelins projecting fort on west, north and east sides of fort - these were removed ~~in~~ in the 1870s
7. Photo 2



1. FORT CHRISTIAN
2. Charlotte Amalie, St. Thomas, USVI
3. M. BARNES
4. MAY 1997
5. Neg - NPS Atlanta
6. View of Fort Christian looking south.  
View predates 1730s construction of  
ravelins. Shows internal tower.
7. Photo 3



1. Fort CHRISTIAN
2. Charlotte Amalie, St. Thomas, USVI
3. M. BARNES
4. MAY 1997
5. Neg - NPS Atlanta
6. View of June 17, 1872 dated drawing of the new north curtain wall and clock tower.
7. Photo 4





1. FORT CHRISTAIN
2. Charlotte Amale, St. Thomas, USVI
3. M. Barnes
4. April 1995
5. Neg - NP6, Atlanta
6. View of 19th century addition to fort.  
View from the interior of fort looking  
north.
7. Photo 5



1. FORT CHRISTIAN
2. Charlotte Amalie, St. Thomas, USVI
3. Photographer Unknown
4. May 1997
5. Neg - NPS Atlanta
6. View of noncontributing modern firehouse within NHL boundary along the east wall of the fort. View is looking northeast
7. Photo 6



1. Fort CHRISTIAN
2. Charlotte Amalie, St. Thomas, USVI
3. M. Barnes
4. April 1995
5. Neg - NPS, Atlanta
6. Gun deck above the eastern casemates - looking south
7. Photo 7

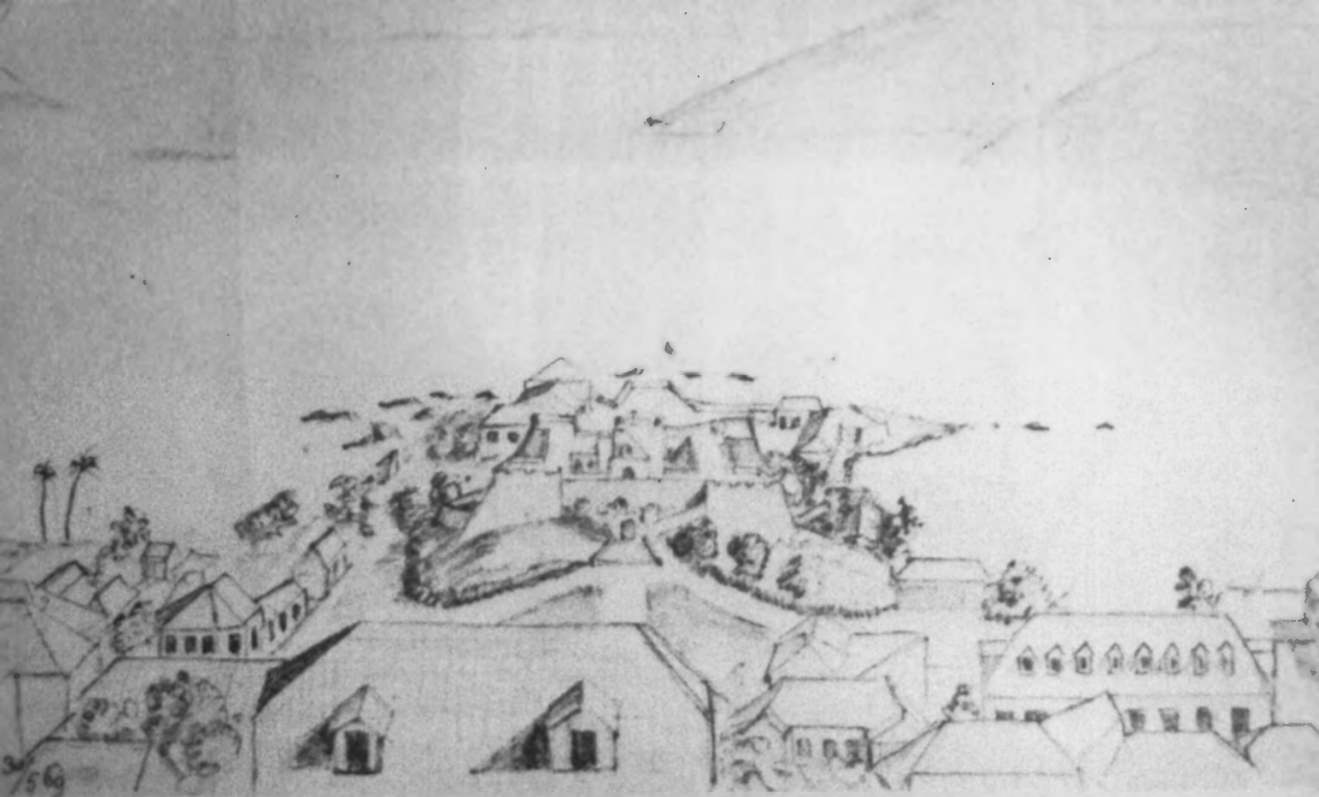


1. FORT CHRISTIAN
2. Charlotte Amalie, St. Thomas, USVI
3. M. BARNES
4. April 1995
5. Neg- NPS Atlanta
6. View of restored western casemate area - looking west.
7. Photo 8





1. FORT CHRISTIAN
2. Charlotte Amalie, St. Thomas, USVI
3. M. Barnes
4. April 1995
5. Neg - NPS, Atlanta
6. View of southeast bastion - showing its two stories and remanent of ravelin - looking west
7. Photo 9



Pencil sketch of Fort Christian as seen from Blackbeard Hill  
by George Winthers, May 30, 1869.

1. FORT CHRISTIAN
2. Charlotte Amalie, St. Thomas, USVI
3. M. Barnes
4. MAY 1997
5. Neg-NPS Atlanta
6. View of fort from the north looking south in 1869.
7. Photo 10



1. FORT CHRISTIAN

2. Charlotte Amalie, St. Thomas, USVI

3. M. Barnes

4. MAY 1979

5. Neg - NPS, Atlanta

6. View of northeast bastion of fort.

Looking west

7. Photo 11



1. FORT CHRISTIAN
2. Charlotte Amalie, St. Thomas, CBS VI
3. M. Barnes
4. April 1995
5. Neg - NPS Atlanta
6. View of guard house on point of northwest bastian. Looking north.
7. Photo 12





1. FORT CHRISTIAN
2. Charlotte Amalie, St. Thomas, U.S.V.I.
3. Photographer Unknown
4. May 1979
5. Neg - NPS Atlanta
6. View of east wall of fort.
7. Photo 13



1671

1. FORT CHRISTIAN
2. Charlotte Amalie, St. Thomas, USVI
3. Photographer Unknown
4. MAY 1979
5. Neg- NPS Atlanta
6. View of the north side of fort.  
Shows 19th century entrance. Looking  
south.
7. Photo 14

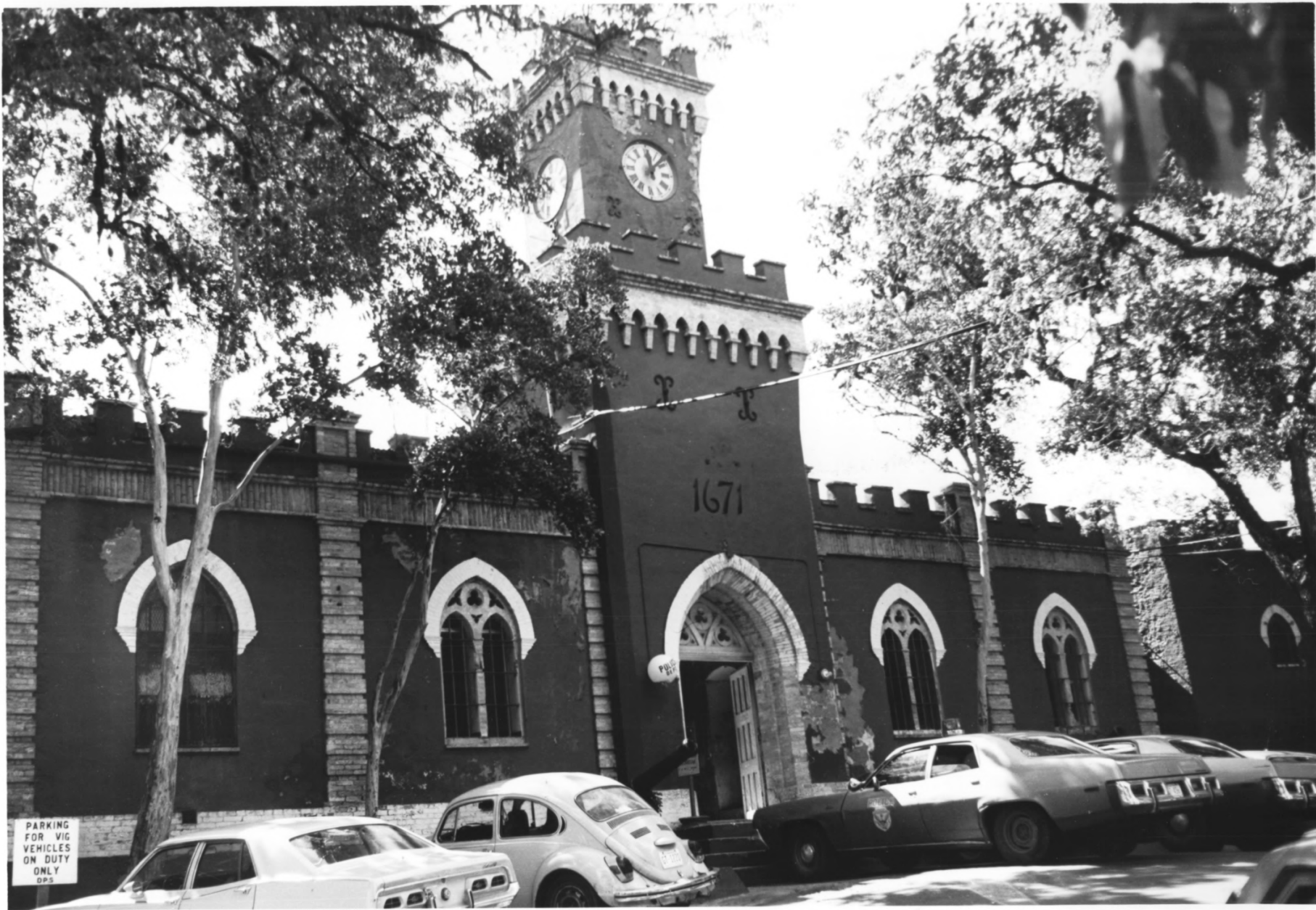


REGISTERED NATIONAL  
HISTORIC LANDMARKS

NPS 1977

FORT CHRISTIAN

CHARLOTTE AMALIE, VIRGIN ISLANDS



PARKING  
FOR VIG  
VEHICLES  
ON DUTY  
ONLY



HEADQUARTERS  
INSULAR FIRE SERVICE



MAON



