



Congdon, Chester + Clara, Estate
St. Louis County, MN

010638-21

#1

Congdon, Chester and Clara, Estate

Duluth, MN

Michael Koop

October 1989

AV Dept, MHS, 690 Cedar St. St. Paul, MN 55101

NW

#1

010638#21

From the Collection of the
MINNESOTA HISTORICAL SOCIETY

*DO NOT REPRODUCE
WITHOUT WRITTEN PERMISSION*

NOTICE
This Material May Be
Protected By Copyright
(Law Title 17 U.S. Code)



Congdon, Chester & Clara, Estate, CARRIAGE HOUSE
St. Louis County, MN

010664-8
#2

Congdon, Chester and Clara, Estate

Duluth, MN

Michael Koop

October 1989

AV Dept, MHS, 690 Cedar St, St. Paul, MN 55101

NE Carriage House

#2

010664#8

From the Collection of the
MINNESOTA HISTORICAL SOCIETY

**DO NOT REPRODUCE
WITHOUT WRITTEN PERMISSION**

NOTICE
This Material May Be
Protected By Copyright
(Law Title 17 U.S. Code)



Condon, Chester + Clara, Estate
St. Louis County, MN

010638-12
#1

Congdon, Chester and Clara, Estate

010638 # 12

Duluth, MN

Michael Koop

October 1989

AV Dept, MHS, 690 Cedar St, St. Paul, MN 55101

East

/

From the Collection of the
MINNESOTA HISTORICAL SOCIETY

**DO NOT REPRODUCE
WITHOUT WRITTEN PERMISSION**

NOTICE

This Material May Be
Protected By Copyright
(Law Title 17 U.S. Code)



Congdon, Chester + Clara, Estate, BILLIARD ROOM
St. Louis County, MN
010529-4

Congdon, Chester and Clara, Estate

Duluth, MN

Michael Koop

February 1990

AU Dept, MHS, 690 Cedar St. St. Paul, MN 55101

West Billiard Room

010529#4

From the Collection of the
MINNESOTA HISTORICAL SOCIETY

**DO NOT REPRODUCE
WITHOUT WRITTEN PERMISSION**

NOTICE

This Material May Be
Protected By Copyright
(Law Title 17 U.S. Code)



Congdon, Chester & Clara, Estate, FIRST FLOOR MAIN HALL
St. Louis County, MN
010529-5

Congdon, Chester and Clara, Estate

010529#5

Duluth, MN

Michael Koop

February 1990

AV Dept, MHS, 690 Cedar St., St. Paul, MN 55101

West First Floor Main Hall

From the Collection of the
MINNESOTA HISTORICAL SOCIETY

**DO NOT REPRODUCE
WITHOUT WRITTEN PERMISSION**

NOTICE
This Material May Be
Protected By Copyright
(Law Title 17 U.S. Code)



Congdon, Chester + Clara, Estate, LIVING ROOM

St. Louis County, MN

010529-6

Congdon, Chester and Clara, Estate

Duluth, MN

Michael Koop

February 1990

AV Dept, MHS, 690 Cedar St. St. Paul, MN 55101

West Living Room

010529 #6

From the Collection of the
MINNESOTA HISTORICAL SOCIETY

*DO NOT REPRODUCE
WITHOUT WRITTEN PERMISSION*

NOTICE
This Material May Be
Protected By Copyright
(Law Title 17 U.S. Code)



Condon, Chester & Clara, Estate, LIBRARY

St. Louis County, MN

010529-7

010529#7

Congdon, Chester and Clara, Estate

Duluth, MN

Michael Koop

February 1990

AU Dept, MHS, 690 Cedar St. St. Paul, MN 55101

South

Library

From the Collection of the
MINNESOTA HISTORICAL SOCIETY

**DO NOT REPRODUCE
WITHOUT WRITTEN PERMISSION**

NOTICE
This Material May Be
Protected By Copyright
(Law Title 17 U.S. Code)

Congdon, Chester & Clara, Estate, SMOKING ROOM
St. Louis County, MN
010529-8



Congdon, Chester and Clara, Estate

Duluth, MN

Michael Koop

February 1990

AV Dept, MHS, 690 Cedar St. St. Paul, MN 55101

South Smoking Room

010529#8

From the Collection of the
MINNESOTA HISTORICAL SOCIETY

**DO NOT REPRODUCE
WITHOUT WRITTEN PERMISSION**

NOTICE
This Material May Be
Protected By Copyright
(Law Title 17 U.S. Code)

Congdon, Chester & Clara, Estate, RECEPTION
St. Louis County, MN
010529-9



Congdon, Chester and Clara, Estate

Duluth, MN

Michael Koop

February 1990

AV Dept, MHS, 690 Cedar St. St. Paul, MN 55101

South Reception

010529 #9

From the Collection of the
MINNESOTA HISTORICAL SOCIETY

**DO NOT REPRODUCE
WITHOUT WRITTEN PERMISSION**

NOTICE
This Material May Be
Protected By Copyright
(Law Title 17 U.S. Code)



Congdon, Chester & Clara, Estate, MAIN HALL AND ENTRY
St. Louis County, MN

010529-10

016529 #10

Conydon, Chester and Clara, Estate

Duluth, MN

Michael Koop

February 1990

AV Dept, MHS, 690 Cedar St. St. Paul, MN 55101

NW Main Hall and entry

From the Collection of the
MINNESOTA HISTORICAL SOCIETY

*DO NOT REPRODUCE
WITHOUT WRITTEN PERMISSION*

NOTICE

This Material May Be
Protected By Copyright
(Law Title 17 U.S. Code)

Congdon, Chester + Clara, Estate, MAIN HALL
St. Louis County, MN
010529-11



Congdon, Chester and Clara, Estate

Duluth, MN

Michael Koop

February 1990

AV Dept, MHS, 690 Cedar St., St. Paul, MN 55101

SW Main Hall

010529 #11

From the Collection of the
MINNESOTA HISTORICAL SOCIETY

**DO NOT REPRODUCE
WITHOUT WRITTEN PERMISSION**

NOTICE
This Material May Be
Protected By Copyright
(Law Title 17 U.S. Code)



Congdon, Chester & Clara, Estate, DINING ROOM

St. Louis County, MN

010529-12

010529 #12

Congdon, Chester and Clara, Estate

Duluth, MN

Michael Koop

February 1990

AU Dept, MHS, 690 Cedar St. St. Paul, MN 55101

East Dining Room

From the Collection of the
MINNESOTA HISTORICAL SOCIETY

**DO NOT REPRODUCE
WITHOUT WRITTEN PERMISSION**

NOTICE
This Material May Be
Protected By Copyright
(Law Title 17 U.S. Code)



Congdon, Chester & Clara, Estate, BREAKFAST ROOM

St. Louis County, MN

010529-13

010529#13

Congdon, Chester and Clara, Estate

Duluth, MN

Michael Koop

February 1990

AV Dept, MHS, 690 Cedar St. St. Paul, MN 55101

East Breakfast Room

From the Collection of the
MINNESOTA HISTORICAL SOCIETY

**DO NOT REPRODUCE
WITHOUT WRITTEN PERMISSION**

NOTICE
This Material May Be
Protected By Copyright
(Law Title 17 U.S. Code)

Condon, Chester and Clara, Estate, BUTLER'S PANTRY
St. Louis County, MN
010529-14



Congdon, Chester and Clara, Estate

Duluth, MN

Michael Koop

February 1990

AV Dept, MHS, 690 Cedar St, St. Paul, MN 55101

NW Butler's Pantry

010529 #14

From the Collection of the
MINNESOTA HISTORICAL SOCIETY

**DO NOT REPRODUCE
WITHOUT WRITTEN PERMISSION**

NOTICE
This Material May Be
Protected By Copyright
(Law Title 17 U.S. Code)



CONGDON, CHESTER & CLARA, ESTATE
ST. LOUIS CO., MINNESOTA
010529 #15

010529 #15

CONGDON, CHESTER AND CLARA, ESTATE

DULUTH, MINNESOTA

MICHAEL KOOP

FEBRUARY 1990

A.V. DEPT., MINNESOTA HISTORICAL SOCIETY
690 CEDAR ST., ST. PAUL, MN 55101

BUTLER'S PANTRY - FACING SOUTH

010529 #15

From the Collection of the
MINNESOTA HISTORICAL SOCIETY

DO NOT REPRODUCE
WITHOUT WRITTEN PERMISSION

NOTICE

This Material May Be
Protected By Copyright
(Law Title 17 U.S. Code)



Congdon, Chester & Clara, Estate, GRAY BEDROOM
St. Louis County, MN
010529-17

Congdon, Chester and Clara, Estate

Duluth, MN

Michael Koop

February 1990

AV Dept, MHS, 690 Cedar St. St. Paul, MN 55101

West Gray Bedroom

010529#17

From the Collection of the
MINNESOTA HISTORICAL SOCIETY

**DO NOT REPRODUCE
WITHOUT WRITTEN PERMISSION**

NOTICE

This Material May Be
Protected By Copyright
(Law Title 17 U.S. Code)



Conzdon, Chester & Clara, Estate, MASTER BEDROOM
St. Louis County, MN
010529-20

Coydon, Chester and Clara, Estate

Duluth, MN

Michael Koop

February 1990

AV Dept, MHS, 690 Cedar St. St. Paul, MN 55101

South Master Bedroom

010529 #20

From the Collection of the
MINNESOTA HISTORICAL SOCIETY

**DO NOT REPRODUCE
WITHOUT WRITTEN PERMISSION**

NOTICE
This Material May Be
Protected By Copyright
(Law Title 17 U.S. Code)



Congdon, Chester and Clara, Estate, THIRD FLOOR BEDROOM
St. Louis County, MN
010529-21

Condon, Chester and Clara, Estate

Duluth, MN

Michael Koop

February 1990

AV Dept, MHS, 690 Cedar St. St. Paul, MN 55101

NW

Third Floor Bedroom

010529#21

From the Collection of the
MINNESOTA HISTORICAL SOCIETY

**DO NOT REPRODUCE
WITHOUT WRITTEN PERMISSION**

NOTICE
This Material May Be
Protected By Copyright
(Law Title 17 U.S. Code)



Congdon, Chester & Clara, Estate, THIRD FLOOR BEDROOM

St. Louis County, MN

010529-23

010529 #23

Conydon, Chester and Clara, Estate

Duluth, MN

Michael Koop

February 1990

AV Dept, MHS, 690 Cedar St., St. Paul, MN 55101

SE Third Floor Bedroom

From the Collection of the
MINNESOTA HISTORICAL SOCIETY

**DO NOT REPRODUCE
WITHOUT WRITTEN PERMISSION**

NOTICE
This Material May Be
Protected By Copyright
(Law Title 17 U.S. Code)



Congdon, Chester & Clara, Estate, THIRD FLOOR BED ROOM, INFIRMARY
St. Louis County, MN

010529-25

010529 #25

Congdon, Chester and Clara, Estate

Duluth, MN
Michael Koop
February 1990

AV Dept, MHS, 690 Cedar St. St. Paul, MN 55101

South Third Floor Bedroom/Inticmary

From the Collection of the
MINNESOTA HISTORICAL SOCIETY

**DO NOT REPRODUCE
WITHOUT WRITTEN PERMISSION**

NOTICE
This Material May Be
Protected By Copyright
(Law Title 17 U.S. Code)



Compton, Chester & Clara, Estate, CARRIAGE HOUSE
St. Louis County, MN

010638-7
#2

Compton, Chester and Clara, Estate

Duluth, MN

Michael Koop

October 1989

AV Dept, MHS, 690 Cedar St, St. Paul, MN 55101

SW

Carriage House

#2

010638#7

From the Collection of the
MINNESOTA HISTORICAL SOCIETY

**DO NOT REPRODUCE
WITHOUT WRITTEN PERMISSION**

NOTICE
This Material May Be
Protected By Copyright
(Law Title 17 U.S. Code)



Congdon, Chester & Clara, Estate, GARDNER'S COTTAGE
St. Louis County, MN

010664-3
#3

Congdon, Chester and Clara, Estate

Duluth, MN

Michael Koop

October 1989

AV Dept, mHs, 690 Cedar St. St. Paul, MN 55101

North

Gardener's Cottage

#3

010664 #3

From the Collection of the
MINNESOTA HISTORICAL SOCIETY

**DO NOT REPRODUCE
WITHOUT WRITTEN PERMISSION**

NOTICE
This Material May Be
Protected By Copyright
(Law Title 17 U.S. Code)



Congdon, Chester + Clara, Estate, GARDNER'S COTTAGE
St. Louis County, MN

010638-4
#3

Congdon, Chester and Clara, Estate

010638 #4

Duluth, MN

Michael Koop

October 1989

AV Dept, MHS, 690 Cedar St. St. Paul, MN 55101

NW

Gardener's Cottage

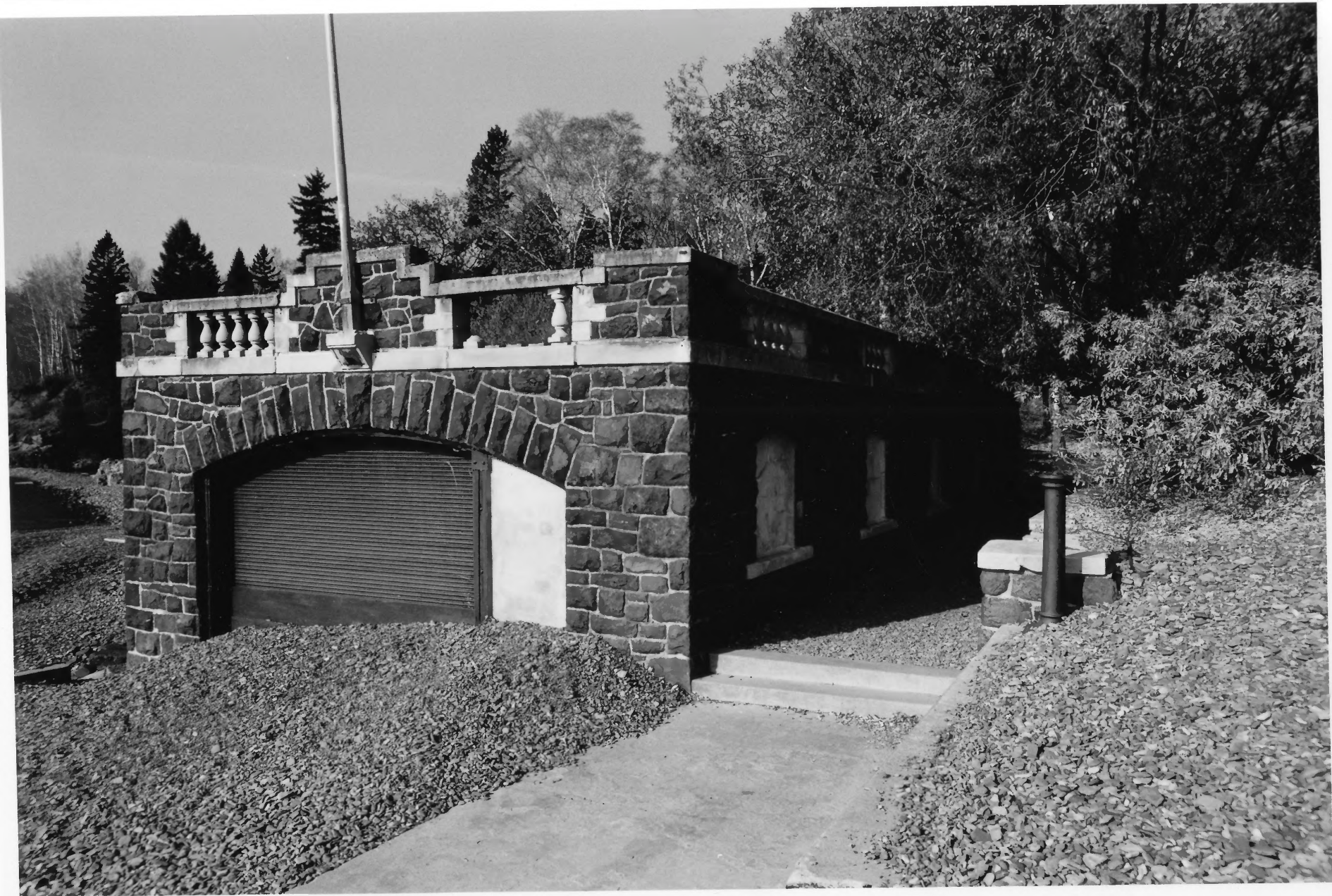
#3

From the Collection of the
MINNESOTA HISTORICAL SOCIETY

**DO NOT REPRODUCE
WITHOUT WRITTEN PERMISSION**

NOTICE

This Material May Be
Protected By Copyright
(Law Title 17 U.S. Code)



Congdon, Chester & Clara, Estate, BOAT HOUSE

St. Louis County, MN

010638-23

#4

Condon, Chester and Clara, Estate

Duluth, MN

Michael Koop

October 1989

Av Dept, Mts, 690 Cedar St. St. Paul, MN 55101

NW Boathouse

#4

010638#23

From the Collection of the
MINNESOTA HISTORICAL SOCIETY

**DO NOT REPRODUCE
WITHOUT WRITTEN PERMISSION**

NOTICE
This Material May Be
Protected By Copyright
(Law Title 17 U.S. Code)



Congdon, Chester & Clara, Estate, BOAT HOUSE
St. Louis County, MN
010664-12
#4

Congdon, Chester and Clara, Estate

Duluth, MN

Michael Koop

October 1989

AV Dept, mths, 690 Cedar St. St. Paul, MN 55101

NE Boathouse

#4

010664#12

From the Collection of the
MINNESOTA HISTORICAL SOCIETY

**DO NOT REPRODUCE
WITHOUT WRITTEN PERMISSION**

NOTICE
This Material May Be
Protected By Copyright
(Law Title 17 U.S. Code)



Congdon, Chester + Clara, Estate, DOTTING/STORAGE SHED
St. Louis County, MN

010638-2
#6

Congdon, Chester and Clara, Estate

Duluth, MN

Michael Koop

October 1989

AV Dept, MHS, 690 Cedar St. St. Paul, MN 55101

SW

Potting/Storage Shed

#6

010638-2

From the Collection of the
MINNESOTA HISTORICAL SOCIETY

**DO NOT REPRODUCE
WITHOUT WRITTEN PERMISSION**

NOTICE
This Material May Be
Protected By Copyright
(Law Title 17 U.S. Code)



Congdon, Chester + Clara, Estate, MUSEUM SHOP
St. Louis County, MN
010664-4
#7 - NON-CONTRIBUTING

Condon, Chester and Clara, Estate

010664#4

Duluth, MN

Michael Koop

October 1989

AV Dept, MHS, 690 Cedar St. St. Paul, MN 55101

East

Museum Shop

#7 - NON-CONTRIBUTING

From the Collection of the
MINNESOTA HISTORICAL SOCIETY

DO NOT REPRODUCE
WITHOUT WRITTEN PERMISSION

NOTICE

This Material May Be
Protected By Copyright
(Law Title 17 U.S. Code)



Congdon, Chester & Clara, Estate, RESERVOIR
St. Louis County, MN

010664-1
#10

Condon, Chester and Clara, Estate

Duluth, MN

Michael Koop

October 1989

AV Dept, mlts, 690 Cedar St. St. Paul, MN 55101

NW

Reservoir

#10

010664#1

From the Collection of the
MINNESOTA HISTORICAL SOCIETY

**DO NOT REPRODUCE
WITHOUT WRITTEN PERMISSION**

NOTICE
This Material May Be
Protected By Copyright
(Law Title 17 U.S. Code)



Condon, Chester + Clara, Estate, LAKE SHELTER
St. Louis County, MN

010638-17
#11

Congdon, Chester and Clara, Estate

Duluth, MN

Michael Kosp

October 1989

AV Dept, MHS, 690 Cedar St. St. Paul, MN 55101

NW Lake Shelter

#11

010638 #17

From the Collection of the
MINNESOTA HISTORICAL SOCIETY

**DO NOT REPRODUCE
WITHOUT WRITTEN PERMISSION**

NOTICE
This Material May Be
Protected By Copyright
(Law Title 17 U.S. Code)



Congdon, Chester + Clara, Estate, TISCHER CREEK BRIDGE
St. Louis County, MN

010638-18

#12

Compton, Chester and Clara, Estate

010638#18

Duluth, MN

Michael Kosp

October 1989

NV Dept, 690 Cedar St. St. Paul, MN 55101

North

Tischer Creek Bridge

#12

From the Collection of the
MINNESOTA HISTORICAL SOCIETY

**DO NOT REPRODUCE
WITHOUT WRITTEN PERMISSION**

NOTICE

This Material May Be
Protected By Copyright
(Law Title 17 U.S. Code)



Congdon, Chester + Clara, Estate, BENT BROOK BRIDGE

St. Louis County, MN

010638-10

#14

010638#10

Condon, Chester and Clara, Estate

Duluth, MN

Michael Koop

October 1989

AV Dept, 690 Cedar St. St. Paul, MN 55101

West Bent Brook Bridge

#14

From the Collection of the
MINNESOTA HISTORICAL SOCIETY

DO NOT REPRODUCE
WITHOUT WRITTEN PERMISSION

NOTICE

This Material May Be
Protected By Copyright
(Law Title 17 U.S. Code)



Congdon, Chester + Clara, Estate, BENT BROOK CULVERT

St. Louis County, MN

010638-11

#15

Condon, Chester and Clara, Estate

010638#11

Duluth, MN

Michael Keap

October 1989

NV Dept, 690 Cedar St. St. Paul, MN 55101

N Bent Brook Culvert

#15

From the Collection of the
MINNESOTA HISTORICAL SOCIETY

**DO NOT REPRODUCE
WITHOUT WRITTEN PERMISSION**

NOTICE

This Material May Be
Protected By Copyright
(Law Title 17 U.S. Code)



Congdon, Chester + Clara, Estate, BENT BROOK BRIDGE
St. Louis County, MN

010638-15

#16 - NON-CONTRIBUTING

610638#15

Condon, Chester and Clara, Estate

Duluth, MN

Michael Koop

October 1989

Av Dept, MHS, 690 Cedar St. St. Paul, MN 55101

N Bent Brook Bridge

#16 - NON-CONTRIBUTING

From the Collection of the
MINNESOTA HISTORICAL SOCIETY

DO NOT REPRODUCE
WITHOUT WRITTEN PERMISSION

NOTICE

This Material May Be
Protected By Copyright
(Law Title 17 U.S. Code)



Congdon, Chester & Clara, Estate
St. Louis County, MN

010638-9

#25

Congdon, Chester and Clara, Estate

Duluth, MN

Michael Koop

October 1989

AV Dept, mhs, 690 Cedar St. St. Paul, MN 55101.

NW

#25

010638#9

From the Collection of the
MINNESOTA HISTORICAL SOCIETY

DO NOT REPRODUCE
WITHOUT WRITTEN PERMISSION

NOTICE

This Material May Be
Protected By Copyright
(Law Title 17 U.S. Code)



Congdon, Chester + Clara, Estate

St. Louis County, MN

010664-6

#3, LEFT - #2 - RIGHT

Congdon, Chester and Clara, Estate

Duluth, MN

Michael Koop

October 1989

AV Dept, MHS, 690 Cedar St. St. Paul, MN 55101

SE

#3-LEFT, #2-RIGHT

010664#6

From the Collection of the
MINNESOTA HISTORICAL SOCIETY

**DO NOT REPRODUCE
WITHOUT WRITTEN PERMISSION**

NOTICE

This Material May Be
Protected By Copyright
(Law Title 17 U.S. Code)



Congdon, Chester + Clara, Estate

St. Louis County, MN

010638-20

#25, #22, #20

Condon, Chester and Clara, Estate

Duluth, MN

Michael Koop

October 1989

AV Dept, MHS, 690 Cedar St. St. Paul, MN 55101

NE

#25, #22, #20

010638#20

From the Collection of the
MINNESOTA HISTORICAL SOCIETY

DO NOT REPRODUCE
WITHOUT WRITTEN PERMISSION

NOTICE
This Material May Be
Protected By Copyright
(Law Title 17 U.S. Code)



Congdon, Chester & Clara, Estate
St. Louis County, MN

010664-7

#25, #23

Compton, Chester and Clara, Estate

Duluth, MN

Michael Koop

October 1989

AV Dept, MHS, 690 Cedar St. St. Paul, MN 55101

East

#25, #23

010664 #7

From the Collection of the
MINNESOTA HISTORICAL SOCIETY

**DO NOT REPRODUCE
WITHOUT WRITTEN PERMISSION**

NOTICE

This Material May Be
Protected By Copyright
(Law Title 17 U.S. Code)



Congdon, Chester & Clara, Estate, ORCHARD HOUSE
St. Louis County, MN

010664-2

#9- NON-CONTRIBUTING

Congdon, Chester and Clara, Estate

010664 #2

Duluth, MN

Michael Koop

October 1989

AV Dept, mths, 690 Cedar St. St. Paul, MN 55101

North Orchard House

#9- NON-CONTRIBUTING

From the Collection of the
MINNESOTA HISTORICAL SOCIETY

DO NOT REPRODUCE
WITHOUT WRITTEN PERMISSION

NOTICE
This Material May Be
Protected By Copyright
(Law Title 17 U.S. Code)