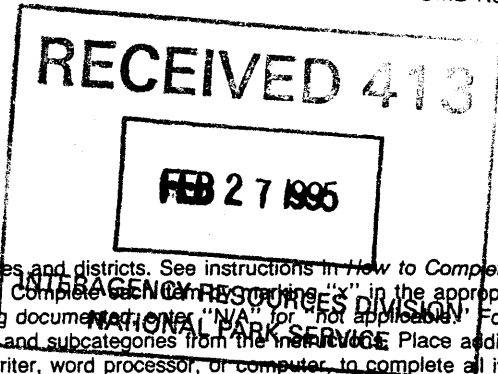


United States Department of the Interior
National Park Service

National Register of Historic Places
Registration Form



This form is for use in nominating or requesting determinations for individual properties and districts. See instructions in *How to Complete the National Register of Historic Places Registration Form* (National Register Bulletin 16A). Complete each item by marking "x" in the appropriate box or by entering the information requested. If an item does not apply to the property being documented, enter "N/A" for "not applicable." For functions, architectural classification, materials, and areas of significance, enter only categories and subcategories from the instructions. Place additional entries and narrative items on continuation sheets (NPS Form 10-900a). Use a typewriter, word processor, or computer, to complete all items.

1. Name of Property

historic name PERRY COUNTY COURTHOUSE

other names/site number N/A

2. Location

street & number Town Square N/A not for publication

city or town Linden N/A vicinity

state Tennessee code TN county Perry code 135 zip code 37096

3. State/Federal Agency Certification

As the designated authority under the National Historic Preservation Act, as amended, I hereby certify that this nomination request for determination of eligibility meets the documentation standards for registering properties in the National Register of Historic Places and meets the procedural and professional requirements set forth in 36 CFR Part 60. In my opinion, the property meets does not meet the National Register criteria. I recommend that this property be considered significant nationally statewide locally. (See continuation sheet for additional comments.)

Herbert L. Hager 2/18/95
Signature of certifying official/Title Date

Deputy State Historic Preservation Officer, Tennessee Historical Commission
State of Federal agency and bureau

In my opinion, the property meets does not meet the National Register criteria. (See continuation sheet for additional comments.)

Signature of certifying official/Title Date

State or Federal agency and bureau

4. National Park Service Certification

I hereby certify that the property is:

- entered in the National Register.
 See continuation sheet.
- determined eligible for the National Register
 See continuation sheet.
- determined not eligible for the National Register.
- removed from the National Register.
- other, (explain:)

Edson W. Beall 3/30/95
Signature of the Keeper Date of Action
Entered in the National Register

Perry County Courthouse
Name of Property

Linden, TN
County and State

5. Classification

Ownership of Property
(Check as many boxes as apply)

- private
- public-local
- public-State
- public-Federal

Category of Property
(Check only one box)

- building(s)
- district
- site
- structure
- object

Number of Resources within Property
(Do not include previously listed resources in the count.)

Contributing	Noncontributing	
1	0	buildings
		sites
		structures
1	2	objects
2	2	Total

Name of related multiple property listing
(Enter "N/A" if property is not part of a multiple property listing.)

Historic County Courthouses of TN

Number of contributing resources previously listed in the National Register

0

6. Function or Use

Historic Functions
(Enter categories from instructions)

GOVERNMENT: courthouse

Current Functions
(Enter categories from instructions)

GOVERNMENT; courthouse

7. Description

Architectural Classification
(Enter categories from instructions)

Colonial Revival

Materials
(Enter categories from instructions)

foundation CONCRETE
walls BRICK; CONCRETE

roof ASPHALT

other METAL

Narrative Description

(Describe the historic and current condition of the property on one or more continuation sheets.)

See continuation sheets.

8. Statement of Significance

Applicable National Register Criteria

(Mark "x" in one or more boxes for the criteria qualifying the property for National Register listing.)

- A** Property is associated with events that have made a significant contribution to the broad patterns of our history.
- B** Property is associated with the lives of persons significant in our past.
- C** Property embodies the distinctive characteristics of a type, period, or method of construction or represents the work of a master, or possesses high artistic values, or represents a significant and distinguishable entity whose components lack individual distinction.
- D** Property has yielded, or is likely to yield, information important in prehistory or history.

Criteria Considerations

(Mark "x" in all the boxes that apply.)

Property is: N/A

- A** owned by a religious institution or used for religious purposes.
- B** removed from its original location.
- C** a birthplace or grave.
- D** a cemetery.
- E** a reconstructed building, object, or structure.
- F** a commemorative property.
- G** less than 50 years of age or achieved significance within the past 50 years.

Areas of Significance

(Enter categories from instructions)

POLITICS/ GOVERNMENT

ARCHITECTURE

Period of Significance

1928 to 1945

Significant Dates

1928

Significant Person

(Complete if Criterion B is marked above)

N/A

Cultural Affiliation

N/A

Architect/Builder

Colley, C. K., arch.

Bell Bros. & Company, contractor

Narrative Statement of Significance

(Explain the significance of the property on one or more continuation sheets.)

9. Major Bibliographical References

Bibliography

(Cite the books, articles, and other sources used in preparing this form on one or more continuation sheets.)

Previous documentation on file (NPS): N/A

- preliminary determination of individual listing (36 CFR 67) has been requested
- previously listed in the National Register
- previously determined eligible by the National Register
- designated a National Historic Landmark
- recorded by Historic American Buildings Survey # _____
- recorded by Historic American Engineering Record # _____

Primary location of additional data: N/A

- State Historic Preservation Office
- Other State agency
- Federal agency
- Local government
- University
- Other

Name of repository:

United States Department of the Interior
National Park Service

National Register of Historic Places Continuation Sheet

Section number 7 Page 1

RECEIVED 413

FEB 27 1995

INTERAGENCY RESOURCES DIVISION
NATIONAL PARK SERVICE

Perry County Courthouse, Linden, TN

VII. Description

The Perry County Courthouse lies in the center of the central courthouse square of Linden (pop. 1,099) in Perry County, Tennessee. The three story, with basement, building is of red brick and concrete and has a flat asphalt roof. Its architectural style is Colonial Revival, characterized by quoins, pilasters, recessed columns, and Palladian-influenced pediments on the south facade and north elevation.

Precise symmetry characterizes the south facade, with a projecting central section of six bays dominating single bays on either the west or east end of the facade. The concrete basement, concrete belt courses, and concrete entablature divides the facade into distinct zones. The basement has six original two over two double hung windows. The first floor section features original six over six double hung windows, centered around the primary entrance to the courthouse. The original door and transom was replaced by a plain metal door in about 1980. Otherwise, the entrance retains its original Colonial Revival features, including a broken pediment with urn, modillioned cornice, architrave, and recessed Ionic columns. The second floor and third floor sections of the south facade are further divided vertically by two pairs of pilasters and by pairs of quoins on the east and west sides of the projecting center section. Both floors have similar six over six double hung windows, but those on the second floor are distinguished by their concrete lintels, with concrete keystones. Centrally located on the south facade, and resting on top of the entablature, is a concrete, pediment-like medallion which gives the date of the building as "1928."

The east elevation, like the south facade, is symmetrically designed, with a projecting center section. On the east elevation, the center section has four bays of original six over six double hung windows. There is no entrance. On the south side of this elevation are two small, four over four double hung windows; these original windows are poorly integrated into the overall design but provide necessary additional interior light. The concrete basement, concrete belt courses, and modillioned cornice divide the elevation into distinct zones similar to the south facade. Concrete quoins define the north and south sides

United States Department of the Interior
National Park Service

National Register of Historic Places Continuation Sheet

Section number 7 Page 2

Perry County Courthouse, Linden, TN

of the east elevation. Two original windows for the concrete basement have been filled in c. 1970 while a third basement window was converted into a ventilation grille in c. 1980.

The north elevation has five bays across the central projecting section, with flanking single bays on both the east and west sides of the elevation. The concrete basement, belt courses, and modillion cornice divide the elevation into distinct zones. The most dominant zone is the one created by the four symmetrically placed twenty-four light circle-top windows which provide light for the second floor courtroom and third floor courtroom balcony. These four windows are centered around an opening for a fifth circle-top window that appears to have been replaced and bricked in to create a blind arch at a later date. However, this feature is part of the building's original design and reflects the architect's desire to maintain balance and symmetry, without introducing bright light directly over the judge's bench in the courtroom. Brick round arches, with keystones, define each of the five bays. Below, on the first floor section, are symmetrically placed eighteen-light casement windows. The north entrance is unadorned and its original semi-elliptical fanlight and original door have been replaced by a modern glass door c. 1980. At the basement level, four original windows on the east side of the entrance have been filled in. On the west side of the entrance, however, all four original four light casement windows have been left intact.

The west facade is almost exactly similar to the east facade. The differences lie at the basement level where three original two over two double hung windows remain except for the southernmost window which was filled in c. 1980.

The pronounced Colonial Revival-styled architectural elements found on the exterior of the Perry County Courthouse are much more restrained on the interior. The courthouse has a cruciform plan, with the intersection at the lobby of the first floor. Walls are of uncovered concrete or of concrete covered with plaster. Flooring is either painted concrete or painted tile over concrete. Drop ceilings have never been added to any rooms, although newer types of florescent lights have replaced the original fixtures in several offices.

The square lobby of the first floor is the heart of the building,

National Register of Historic Places Continuation Sheet

Section number 7 Page 3

Perry County Courthouse, Linden, TN

and not coincidentally, the administrative heart of the local government. Six offices--trustee, county clerk, youth service officer, register, election commissioner, and county executive--surround the lobby. A classically inspired cornice adorns the lobby and extends as well into offices like that of the county executive. The entrance doors and door frames are mostly original although altered by the addition of ventilation grilles. Concrete pilasters define both entrances into the lobby, particularly adding a gracefulness to the dual concrete staircase, with original wooden handrail, to the second floor. The office spaces of the first floor are largely original. In the office for the Youth Service Officer, a faux pine partition has been added so that the officer may have confidential conversations. Carpet has been added in this office as well as the office of the county executive. In the offices of the county executive, trustee, county clerk, and register, a new office counter has been added (around 1980). Otherwise, the offices retain the original wall treatments, original woodwork, and the original office configuration.

The second floor contains the entrance to the courtroom, which retains its original door and door frame. A long corridor, with original lights, runs between the courtroom and the staircase. Offices for the county extension agent, the general sessions court, and the circuit court clerk flank the staircase. These offices have had few changes. Wooden storage cabinets have been added on the wall of the extension agent's office; the circuit court clerk has a circa 1980 counter; and the general sessions court office has added carpet. Otherwise, the rooms retain their original configuration, original walls, and original woodwork.

The courtroom is a magnificent public space. The judge's bench was replaced by modern, but compatible, furniture in c. 1980. New tables for counsel and new furniture for the jury box were added at the same time. The rest of the courtroom retains its original features, including electric light fixtures, seating for the public, and original doors and door frames for four offices that surround the courtroom. On the east side are offices for clerk & master, circuit & sessions judge, and circuit clerk. On the west side is a deliberation room for the trial jury.

The third floor provides access to a large public balcony for the courtroom. The door and door frame to the balcony are original.

United States Department of the Interior
National Park Service

National Register of Historic Places Continuation Sheet

Section number 7 Page 4

Perry County Courthouse, Linden, TN

The seats and arrangement of the balcony also remain intact, although in c. 1980, county officials decided to convert a section of the balcony, on either side of the staircase entrance, for document storage. Faux pine partitions now separate this section of the balcony from the rest of the public seating.

The basement is largely used for storage and for public restrooms. The men's restroom is on the east end of the corridor while the women's restroom is on the west end. Adjacent to the men's restroom, on the north side of hall, are original offices for FHA and the Drivers' License center. Again, original wall treatments and woodwork are intact. The office of tax assessor is adjacent to the women's restroom. This office too retains its original walls, flooring, and woodwork.

The courthouse is surrounded by low brick fence (C), which was built in 1928, that defines the courthouse lot. This fence, part of the original landscaping associated with the 1928 courthouse, is a contributing element. Also on the courthouse grounds are two American Legion war memorial monuments (NC), both of which are non-contributing due to date of construction.

United States Department of the Interior
National Park Service

National Register of Historic Places Continuation Sheet

Section number 8 Page 5

Perry County Courthouse, Linden, TN

VIII. Statement of Significance

The Perry County Courthouse, located in a central courthouse square in Linden (pop. 1,099), the seat of Perry County, Tennessee, is eligible for the National Register of Historic Places under Criterion A for its local association with government and under Criterion C as the town's and county's outstanding example of Colonial Revival architecture. It is nominated under the registration requirements for County Courthouses set forth in the Multiple Property Documentation form for Historic County Courthouses in Tennessee, 1865-1940.

Perry County was created by an act of the General Assembly on November 14, 1819. The county seat was established at Perryville, on the west bank of the Tennessee River. In 1846, the county of Perry was divided and the county of Decatur established, with the Tennessee River as the boundary line between the two counties. The courts of Perry County were then adjourned to Harrisburg, a point four miles south of Linden. After two years, Linden was established as the permanent site of the county seat. A simple frame structure served as courthouse but it burned in 1863 during the Civil War. No replacement was built until the war was over and in 1868, county officials spent \$9500 to construct a two-story brick courthouse.

This small, unadorned building served the county for sixty years. By the fall of 1927, the county court recognized the need for a new courthouse to provide offices for expanded government services associated with the progressive era in Tennessee politics and government. In January 1928, as the building was undergoing restoration and expansion, it burned. The county government then decided to build a stylish, much larger courthouse to house the necessary government function and officials for a progressive rural county. These new offices included space for the county extension agent and, later, during the New Deal era, local administrators for the Works Progress Administration and Federal Housing Administration. The offices and jail of the sheriff department, however, remained in a separate building on the courthouse square; these functions were not centralized into the new building. During its period of significance from 1928 to 1945, the county courthouse became an administrative subcenter for a host of state and federal programs that affected the management of local government and

National Register of Historic Places Continuation Sheet

Section number 8 Page 6

Perry County Courthouse, Linden, TN

expanded the range of government services to the people of Perry County. These activities included such New Deal programs as the Federal Emergency Relief Administration and the WPA, public health initiatives of the mid-1930s, and the state licensing system for automobiles and other activities. Here too the county court met throughout World War II to determine the level of local participation in various war-related drives; the draft board met here as well.

County officials turned to Nashville architect C. K. Colley for the design. The contractor was Bell Bros. & Company, also of Nashville. Colley had been an important practitioner of Classical Revival architecture since, at least, 1909-11, when he designed the new President's House at Middle Tennessee State Normal School in Murfreesboro. Colley is also credited with the design of later dormitories at Middle Tennessee State Normal School; these too were in the Classical Revival style.

For the new Perry County Courthouse, Colley developed a more Colonial Revival design than his earlier Classical Revival work at the state college. No one-story or two-story porticoes with classical columns are present. Rather, Colley chose pilasters, recessed columns, quoins, a belt course of concrete, and Palladian-influenced pediments at the primary north and south entrances as his major architectural elements. These details, of course, are all strongly associated with early American architecture of the colonial era. Combined together in a three-story red brick building, they represent a coherent and effective statement of Colonial Revival architecture as designed in Tennessee during the 1920s.

Compared to the exterior, the interior of the new courthouse has a more understated elegance. The most outstanding feature was the large second story courtroom, with a large third floor balcony. Well-lighted by large colonial style windows on the north wall, this majestic courtroom is still largely unchanged and conveys well the power of the local judicial system in early twentieth century Tennessee. Other offices, such as the second floor offices of the county extension agent and the first floor office of the youth service officer, show the influence of different reform eras of Tennessee politics on local government in Perry County.

United States Department of the Interior
National Park Service

National Register of Historic Places Continuation Sheet

Section number 8 Page 7

Perry County Courthouse, Linden, TN

Since its construction, the Perry County Courthouse has been the administrative center for government in Perry County. It still houses all major branches of local government, except for the Sheriff's Department. No other comparable Colonial Revival styled buildings exist in Perry County and the Perry County Courthouse dominates the public architecture of this county as in few other similar counties in Tennessee.

United States Department of the Interior
National Park Service

National Register of Historic Places Continuation Sheet

Section number 9 Page 8

Perry County Courthouse, Linden, TN

IX. Bibliography

Bowen, Mary N. "Letter to Carroll Van West, September 16, 1994."
National Register Collections, MTSU Center for Historic
Preservation, Murfreesboro, TN.

Crane, Sophie and Paul. Tennessee Taproots. Old Hickory, TN:
Earle-Shields Publishers, 1976.

Goodspeed, Weston, ed. History of Tennessee. Nashville:
Goodspeed Publishers, 1887.

Hankins, Caneta. Hearthstones: The History of Rutherford County
Homes. Murfreesboro, TN: Oaklands Association, 1994.

Perry County Court Records, 1927-1928, Linden, TN.

United States Department of the Interior
National Park Service

National Register of Historic Places Continuation Sheet

Section number 10 Page 9

Perry County Courthouse, Linden, TN

X. Geographical Data

Verbal Boundary Description

The nominated property lies at the center of the courthouse square in Linden, Perry County, Tennessee. It occupies the city lot 5 documented in the attached Perry County Tax Map 75-L-C.

Boundary Description

The boundary includes the city lot that has been historically associated with the Perry County Courthouse.

United States Department of the Interior
National Park Service

National Register of Historic Places Continuation Sheet

Section number PHOTOS Page 10

Perry County Courthouse, Linden, TN

PHOTOGRAPHS

Perry County Courthouse, Linden, TN

Photos by: Carroll Van West

MTSU Center for Historic Preservation

Date: August 1993

Negatives: Tennessee Historical Commission
Nashville, Tennessee

South facade, facing north
1 of 15

South facade, entrance detail, facing north
2 of 15

East elevation, facing west
3 of 15

North elevation, facing south
4 of 15

West elevation, facing east
5 of 15

Central lobby, first floor, facing northwest
6 of 15

Central lobby, first floor, facing northeast
7 of 15

Central lobby, first floor, facing south
8 of 15

Central lobby, first floor, facing north
9 of 15

Courtroom, second floor, facing northeast
10 of 15

Courtroom, trial jury room and jury box, facing west
11 of 15

United States Department of the Interior
National Park Service

National Register of Historic Places Continuation Sheet

Section number PHOTOS Page 11

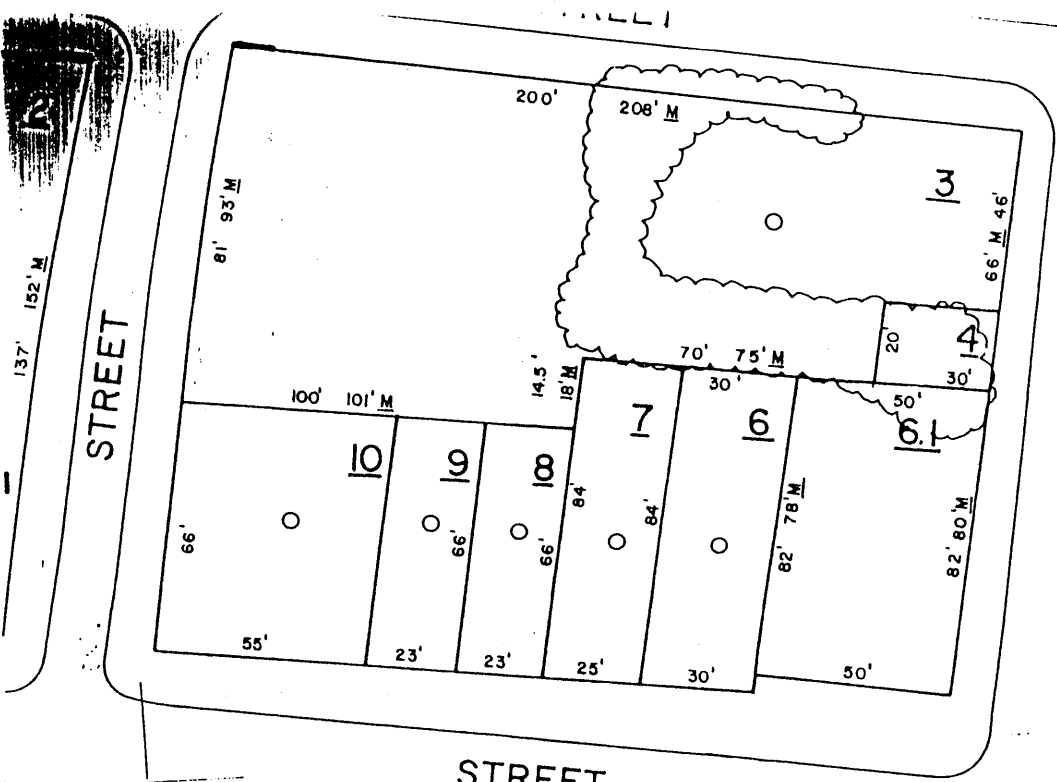
Perry County Courthouse, Linden, TN

Courtroom, public seating, looking southwest
12 of 15

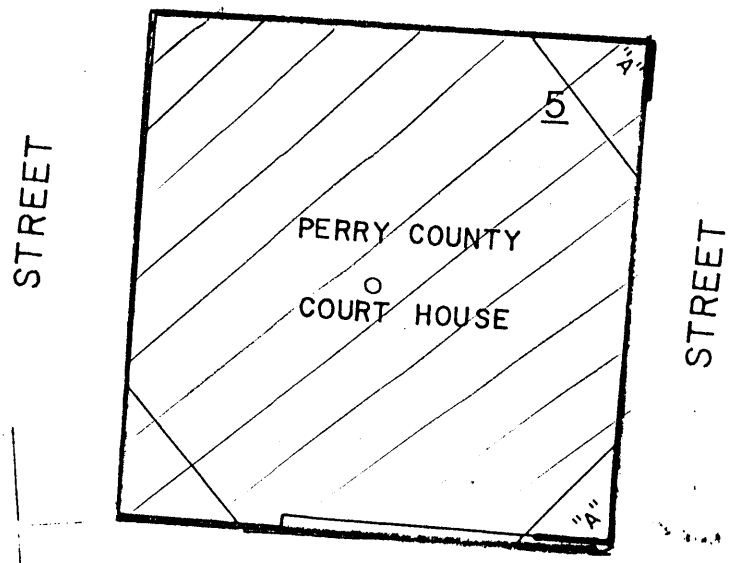
Courtroom, facing east
13 of 15

Courtroom, from third floor balcony, facing northeast
14 of 15

War Memorial Monument, courthouse grounds, facing north
15 of 15



↑ Perry County Courthouse
Perry County TN 1"=50'



75-L-B
75-L-C

