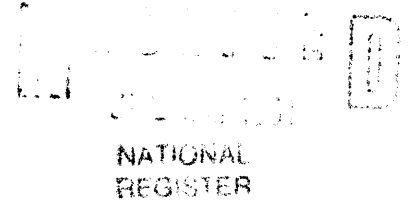


1117

United States Department of the Interior
National Park Service



National Register of Historic Places Registration Form

This form is for use in nominating or requesting determinations of eligibility for individual properties or districts. See instructions in *Guidelines for Completing National Register Forms* (National Register Bulletin 16). Complete each item by marking "x" in the appropriate box or by entering the requested information. If an item does not apply to the property being documented, enter "N/A" for "not applicable." For functions, styles, materials, and areas of significance, enter only the categories and subcategories listed in the instructions. For additional space use continuation sheets (Form 10-900a). Type all entries.

1. Name of Property

historic name Louisa Building
other names/site number _____

2. Location

street & number 120 S. Main not for publication
city, town Mount Pleasant vicinity
state Iowa code IA county Henry code 087 zip code 52641

3. Classification

Ownership of Property	Category of Property	Number of Resources within Property	
		Contributing	Noncontributing
<input checked="" type="checkbox"/> private	<input checked="" type="checkbox"/> building(s)	<u>1</u>	<u>0</u> buildings
<input type="checkbox"/> public-local	<input type="checkbox"/> district	_____	_____ sites
<input type="checkbox"/> public-State	<input type="checkbox"/> site	_____	_____ structures
<input type="checkbox"/> public-Federal	<input type="checkbox"/> structure	_____	_____ objects
	<input type="checkbox"/> object	<u>1</u>	<u>0</u> Total

Name of related multiple property listing: Architectural & Historical Resources of Mount Pleasant, IA
Number of contributing resources previously listed in the National Register 0

4. State/Federal Agency Certification

As the designated authority under the National Historic Preservation Act of 1966, as amended, I hereby certify that this nomination request for determination of eligibility meets the documentation standards for registering properties in the National Register of Historic Places and meets the procedural and professional requirements set forth in 36 CFR Part 60. In my opinion, the property meets does not meet the National Register criteria. See continuation sheet.

[Signature] Date 7/15/91
Signature of certifying official
State Historical Society of Iowa
State or Federal agency and bureau

In my opinion, the property meets does not meet the National Register criteria. See continuation sheet.

Signature of commenting or other official Date _____

State or Federal agency and bureau

5. National Park Service Certification

I, hereby, certify that this property is:

entered in the National Register. Entered in the National Register
 See continuation sheet.

determined eligible for the National Register. See continuation sheet.

determined not eligible for the National Register.

removed from the National Register.

other, (explain): _____

[Signature] 9/6/91
Signature of the Keeper Date of Action

6. Function or Use

Historic Functions (enter categories from instructions)

COMMERCE/specialty

Current Functions (enter categories from instructions)

COMMERCE/specialty

7. DescriptionArchitectural Classification
(enter categories from instructions)

Italianate/Classical Revival

Materials (enter categories from instructions)

foundation Limestone

walls Brick

roof Asphalt

other Metal cornice

Stone lintels

Describe present and historic physical appearance.

This two story brick, triple storefront building (57'x140') is located near the south end of the east side of the Square at 120 S. Main. Built in 1901, it features a symmetrical facade, with two doors located in the center third. It has always been used as a single store, not two or three individual ones. The treatment of the second floor follows this same tri-partite division. It has three sets of three tall slender windows with rusticated stone lintels. Above the middle window of each group is a brick patterned roundel (for ventilation?), and a corbeled brick frieze is found just below the metal cornice. This is a bracketed cornice that originally featured a triangular name/date pediment (THE LOUISA, 1901), with finials on each side of the pediment, and at the north and south ends of the cornice.

Alterations to this building include: new windows and doors following a 1930s fire, and the loss of the pediment and finials. A photograph from 1909 shows the original facade configuration. The street level alterations are more intrusive in terms of material and color than design. The second floor windows originally had transoms at the top, and it is very possible that the present panels simply cover these transoms. The loss of the decorative elements from the cornice area is lamentable but not crucial.

On the interior, the space is unbroken by walls in the front three quarters of the building, with iron columns providing structural support. A pressed metal ceiling remains in place. The second floor was originally undivided open space from front to back. However, it was remodeled into several apartments following the 1930s fire. None of the alterations are sufficient to negate eligibility

8. Statement of Significance

Certifying official has considered the significance of this property in relation to other properties:

nationally statewide locally

Applicable National Register Criteria A B C D

Criteria Considerations (Exceptions) A B C D E F G

Areas of Significance (enter categories from instructions)

Architecture

Period of Significance

1901

Significant Dates

1901

Cultural Affiliation

N.A.

Significant Person

N.A.

Architect/Builder

Unknown

State significance of property, and justify criteria, criteria considerations, and areas and periods of significance noted above.

This building is significant under Criterion C as it represents a transitional design in Mount Pleasant architecture between the late Italianate buildings, and the Neo-classical buildings that were to become popular in the first quarter of the 20th century.

The triple storefront Louisa Building (1901) presents a strong image on the east side of the Square. It is the same two story height of other buildings in the block, the same multiple storefront width as several others, and has a metal cornice like the others. However, the design of the building created more of a horizontal emphasis, and there was less of a visual distraction due to lots of small details on the facade. The simplification in design began at street level. The triple storefront was composed of three equal parts (display window, double doors, display window) that were not broken into three separate entrances with windows. The second floor continued the tripartite division with three sets of three windows, but the strongest emphasis is seen in the heavy rusticated stone lintels above the windows. These are a definite departure from the elaborate cast hoodmolds, and/or simple brick patterned hoods, of the Italianate style buildings of the previous decades. The metal cornice appears similar to those on earlier buildings, but there is a simplicity of design, fewer brackets, less details, and the pediment itself was less elaborate, and broader physically, thus emphasizing the horizontal character of the building. These differences may appear minor, and perhaps even to be rather subtle, but they indicate the changing taste of the times. The exuberance of the late Italianate commercial buildings was about to be replaced by the symmetry and simplicity of Classical design.

When this building was erected in 1901, it filled an empty space on the east side of the Square left by an 1882 fire which destroyed the Ambler Block. Sanborn maps from 1886, 1892, and 1899 simply noted "Brick ruins of fire." Between the 1899 and the 1909 Sanborns the east

See continuation sheet

9. Major Bibliographical References

Mt. Pleasant Free Press, 25 July 1935, 29 April 1937

Historic photographs of the building and of the east side of square.

See continuation sheet

Previous documentation on file (NPS):

- preliminary determination of individual listing (36 CFR 67) has been requested
- previously listed in the National Register
- previously determined eligible by the National Register
- designated a National Historic Landmark
- recorded by Historic American Buildings Survey # _____
- recorded by Historic American Engineering Record # _____

Primary location of additional data:

- State historic preservation office
- Other State agency
- Federal agency
- Local government
- University
- Other

Specify repository: _____

10. Geographical Data

Acreage of property Less than one acre

UTM References:

A

1	5
---	---

6	2	1	7	8	0
---	---	---	---	---	---

4	5	3	5	7	4	0
---	---	---	---	---	---	---

Zone Easting Northing

C

--	--

--	--	--	--	--	--	--	--

--	--	--	--	--	--	--	--

B

--	--

--	--	--	--	--	--

--	--	--	--	--	--	--	--

Zone Easting Northing

D

--	--

--	--	--	--	--	--	--	--

--	--	--	--	--	--	--	--

See continuation sheet

Verbal Boundary Description

S 57 1/2' of N 60', Lot 4, Blk 10, Original Town, City of Mount Pleasant.

See continuation sheet

Boundary Justification

This is the area historically associated with this resource.

See continuation sheet

11. Form Prepared By

name/title Molly Myers Naumann, Consultant (515) 682-2743

organization City of Mount Pleasant date May 1991

street & number City Hall, 202 W. Monroe telephone (319) 385-1470

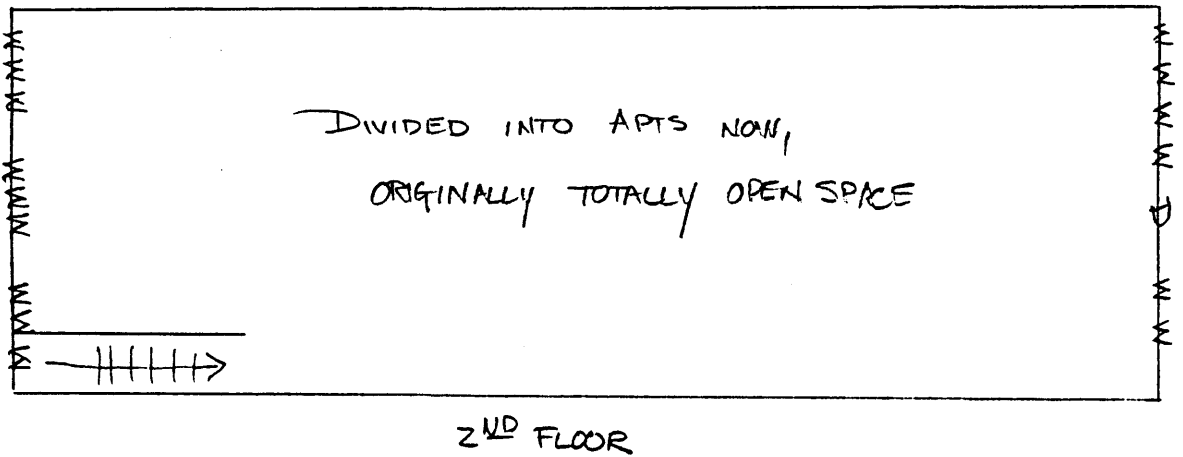
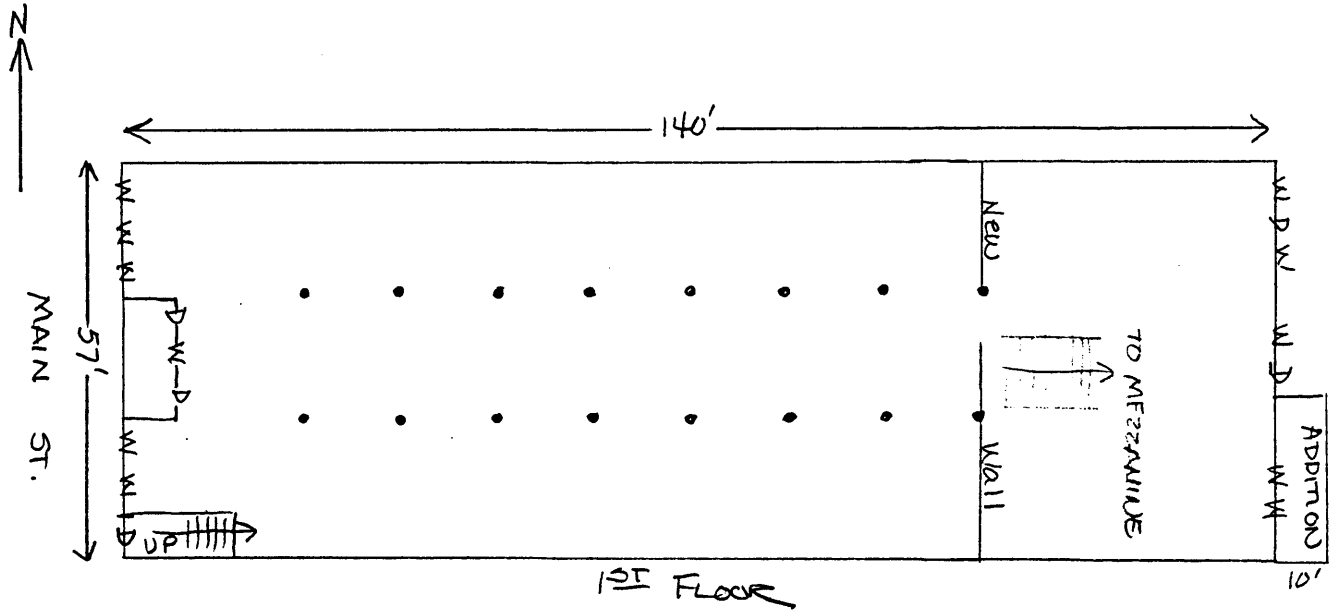
city or town Mount Pleasant state IA zip code 52641

United States Department of the Interior
National Park Service

National Register of Historic Places Continuation Sheet

Section number 7 Page 2

CFN-259-1116

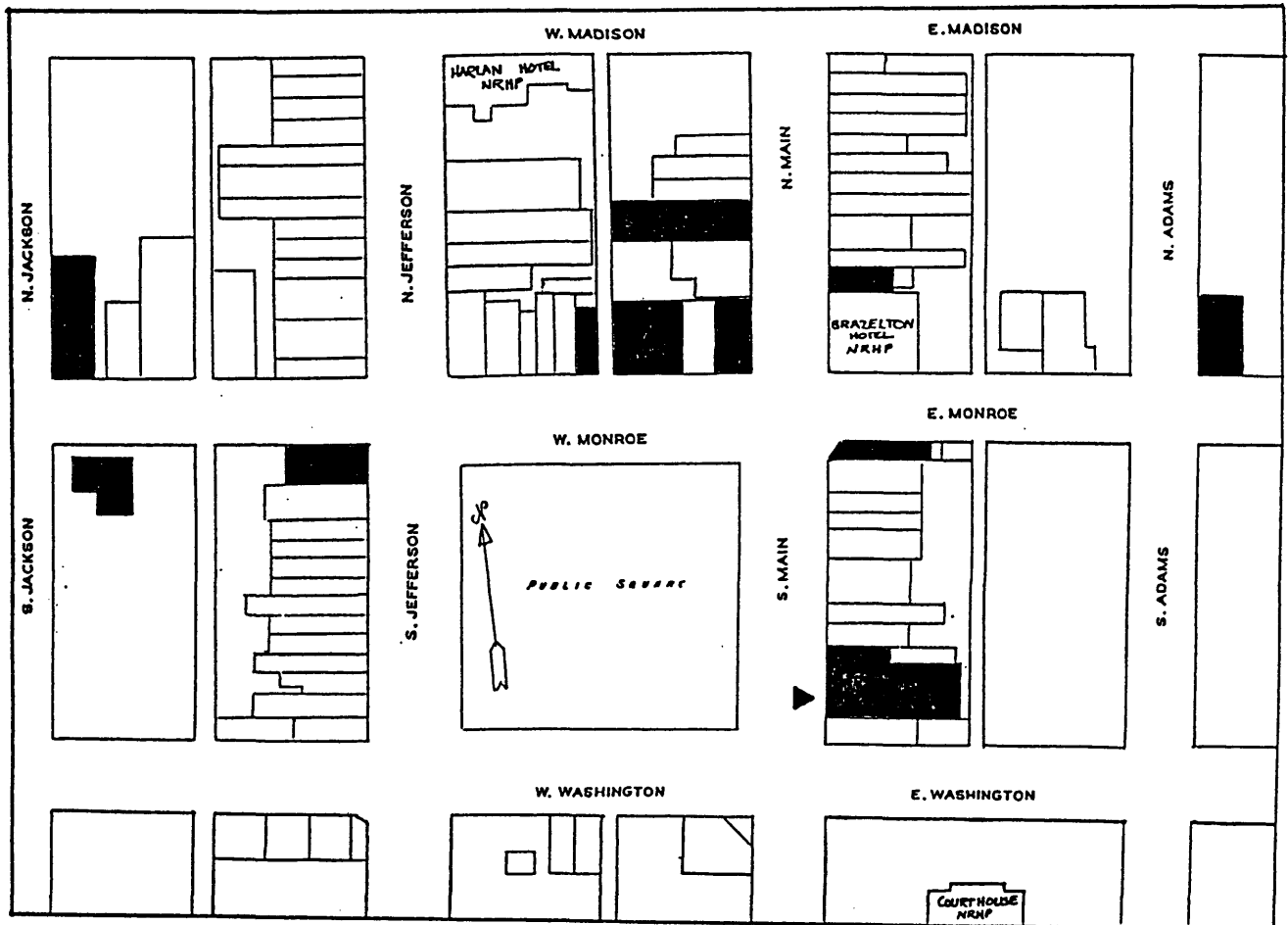


United States Department of the Interior
National Park Service

National Register of Historic Places Continuation Sheet

Section number 7 Page 3

CFN-259-1116



MOUNT PLEASANT PUBLIC SQUARE

Shaded buildings are those being nominated.

▶ indicates specific building being nominated.

United States Department of the Interior
National Park Service

National Register of Historic Places Continuation Sheet

Section number 8 Page 2

CFN-259-1116

side of the Square was developed into what is seen today. The Louisa Building filled in the space left by the fire at the south end of the block, and the Congregational Church near the north end was replaced by a two story brick commercial building. The major construction in the following years was of public buildings: the Library (1902), Seeley Memorial Y.M.C.A. (1905), the High School on N. Adams (1908-09), and the Henry County Courthouse (1912-13). When commercial construction began again, strong Classical influences are seen: First National Bank (1923), Masonic Temple Theater (1926), and the new City Hall (1936). The Louisa stands as a transition between the styles.

United States Department of the Interior
National Park Service

National Register of Historic Places
Continuation Sheet

Section number Photo Page 1

CFN-259-1116

