



UNITED STATES DEPARTMENT OF THE INTERIOR  
NATIONAL PARK SERVICE

NATIONAL REGISTER OF HISTORIC PLACES  
PROPERTY PHOTOGRAPH FORM

FOR NPS USE ONLY

RECEIVED

DATE ENTERED

SEE INSTRUCTIONS IN *HOW TO COMPLETE NATIONAL REGISTER FORMS*  
TYPE ALL ENTRIES -- ENCLOSE WITH PHOTOGRAPH.

1 NAME

HISTORIC Kalaupapa Leprosy Settlement

AND/OR COMMON

Kalawao Settlement, Kalaupapa Peninsula

2 LOCATION

CITY, TOWN Kalaupapa Peninsula VICINITY OF Moloka'i COUNTY Kalawao and STATE Hawaii  
Island Maui

3 PHOTO REFERENCE

PHOTO CREDIT NPS (Apple)

DATE OF PHOTO 8/6/75

NEGATIVE FILED AT HI State Office, NPS, 677 Ala Moana Blvd., Suite 512, Honolulu, HI 96813

4 IDENTIFICATION

DESCRIBE VIEW, DIRECTION, ETC. IF DISTRICT, GIVE BUILDING NAME & STREET

PHOTO NO. Roll V-6

View south, from near lighthouse, of Makanalua ahupua'a.  
Waihanau valley in background.

KALAUPAPA NO. 1





UNITED STATES DEPARTMENT OF THE INTERIOR  
NATIONAL PARK SERVICE

NATIONAL REGISTER OF HISTORIC PLACES  
PROPERTY PHOTOGRAPH FORM

FOR NPS USE ONLY

RECEIVED

DATE ENTERED

SEE INSTRUCTIONS IN *HOW TO COMPLETE NATIONAL REGISTER FORMS*  
TYPE ALL ENTRIES -- ENCLOSE WITH PHOTOGRAPH.

1 NAME

HISTORIC Kalaupapa Leprosy Settlement

AND/OR COMMON

Kalawao Settlement, Kalaupapa Peninsula

2 LOCATION

CITY, TOWN Kalaupapa Peninsula VICINITY OF Moloka'i COUNTY Kalawao and STATE Hawaii  
Island Maui

3 PHOTO REFERENCE

PHOTO CREDIT NPS (Apple)

DATE OF PHOTO 8/6/75

NEGATIVE FILED AT HI State Office, NPS, 677 Ala Moana Blvd., Suite 512, Honolulu, HI 96813

4 IDENTIFICATION

DESCRIBE VIEW, DIRECTION, ETC. IF DISTRICT, GIVE BUILDING NAME & STREET

PHOTO NO. Roll I-  
22A

View from lighthouse, Kalaupapa Settlement in high center;  
field systems in low center. Looking southwest.

KALAUAPAPA NO. 2





UNITED STATES DEPARTMENT OF THE INTERIOR  
NATIONAL PARK SERVICE

NATIONAL REGISTER OF HISTORIC PLACES  
PROPERTY PHOTOGRAPH FORM

FOR NPS USE ONLY

RECEIVED

DATE ENTERED

SEE INSTRUCTIONS IN *HOW TO COMPLETE NATIONAL REGISTER FORMS*  
TYPE ALL ENTRIES -- ENCLOSE WITH PHOTOGRAPH

1 NAME

HISTORIC Kalaupapa Leprosy Settlement

AND/OR COMMON

Kalawao Settlement, Kalaupapa Peninsula

2 LOCATION

CITY, TOWN Kalaupapa Peninsula VICINITY OF Moloka'i COUNTY Kalawao and STATE Hawaii  
Island Maui

3 PHOTO REFERENCE

PHOTO CREDIT NPS (Apple)

DATE OF PHOTO 8/6/75

NEGATIVE FILED AT HI State Office, NPS, 677 Ala Moana Blvd., Suite 512, Honolulu, HI 96813

4 IDENTIFICATION

DESCRIBE VIEW, DIRECTION, ETC. IF DISTRICT, GIVE BUILDING NAME & STREET

View from lighthouse toward southeast.

PHOTO NO. Roll i-  
25A





UNITED STATES DEPARTMENT OF THE INTERIOR  
NATIONAL PARK SERVICE

NATIONAL REGISTER OF HISTORIC PLACES  
PROPERTY PHOTOGRAPH FORM

FOR NPS USE ONLY

RECEIVED

DATE ENTERED

SEE INSTRUCTIONS IN *HOW TO COMPLETE NATIONAL REGISTER FORMS*  
TYPE ALL ENTRIES -- ENCLOSE WITH PHOTOGRAPH

1 NAME

HISTORIC Kalaupapa Leprosy Settlement

AND/OR COMMON

Kalawao Settlement, Kalaupapa Peninsula

2 LOCATION

CITY, TOWN Kalaupapa Peninsula VICINITY OF Moloka'i Island COUNTY Kalawao and Maui STATE Hawaii

3 PHOTO REFERENCE

PHOTO CREDIT NPS (Apple)

DATE OF PHOTO 8/6/75

NEGATIVE FILED AT HI State Office, NPS, 677 Ala Moana Blvd., Suite 512, Honolulu, HI 96813

4 IDENTIFICATION

DESCRIBE VIEW, DIRECTION, ETC. IF DISTRICT, GIVE BUILDING NAME & STREET

PHOTO NO. Roll I-  
9A

Mule train arriving at Puwahi, in Kalaupapa ahupua'a.

KALAUAPAPA NO. 4





USCG LIGHT STATION  
1909  
TOWER 186 - STEPS 189  
2,000,000 CANDLEPOWER  
BRIGHTEST BEAM  
IN THE PACIFIC

OPERATIONAL  
AREA  
AUTHORIZED  
VEHICLES ONLY

USCG  
1909

UNITED STATES DEPARTMENT OF THE INTERIOR  
NATIONAL PARK SERVICE

NATIONAL REGISTER OF HISTORIC PLACES  
PROPERTY PHOTOGRAPH FORM

FOR NPS USE ONLY

RECEIVED

DATE ENTERED

SEE INSTRUCTIONS IN *HOW TO COMPLETE NATIONAL REGISTER FORMS*  
TYPE ALL ENTRIES -- ENCLOSE WITH PHOTOGRAPH.

**1** NAME

HISTORIC Kalaupapa Leprosy Settlement

AND/OR COMMON

Kalawao Settlement, Kalaupapa Peninsula

**2** LOCATION

CITY/TOWN Kalaupapa Peninsula VICINITY OF Moloka'i COUNTY Kalawao and STATE Hawaii  
Island Maui

**3** PHOTO REFERENCE

PHOTO CREDIT NPS (Apple)

DATE OF PHOTO 8/6/75

NEGATIVE FILED AT HI State Office, NPS, 677 Ala Moana Blvd., Suite 512, Honolulu, HI 96813

**4** IDENTIFICATION

DESCRIBE VIEW, DIRECTION, ETC. IF DISTRICT, GIVE BUILDING NAME & STREET

Airport, Kalaupapa.

PHOTO NO. Roll I-  
6A

KALAUPAPA NO. 5





UNITED STATES DEPARTMENT OF THE INTERIOR  
NATIONAL PARK SERVICE

NATIONAL REGISTER OF HISTORIC PLACES  
PROPERTY PHOTOGRAPH FORM

FOR NPS USE ONLY

RECEIVED

DATE ENTERED

SEE INSTRUCTIONS IN *HOW TO COMPLETE NATIONAL REGISTER FORMS*  
TYPE ALL ENTRIES -- ENCLOSE WITH PHOTOGRAPH

**1** NAME

HISTORIC Kalaupapa Leprosy Settlement

AND/OR COMMON

Kalawao Settlement, Kalaupapa Peninsula

**2** LOCATION

CITY, TOWN Kalaupapa Peninsula VICINITY OF Moloka'i COUNTY Kalawao and STATE Hawaii  
Island Maui

**3** PHOTO REFERENCE

PHOTO CREDIT NPS (Apple)

DATE OF PHOTO 8/6/75

NEGATIVE FILED AT HI State Office, NPS, 677 Ala Moana Blvd., Suite 512, Honolulu, HI 96813

**4** IDENTIFICATION

DESCRIBE VIEW, DIRECTION, ETC. IF DISTRICT, GIVE BUILDING NAME & STREET

Barge landing, Kalaupapa Settlement. Looking south.

PHOTO NO. Roll IV-  
4A

KALAUPAPA NO. 6





UNITED STATES DEPARTMENT OF THE INTERIOR  
NATIONAL PARK SERVICE

NATIONAL REGISTER OF HISTORIC PLACES  
PROPERTY PHOTOGRAPH FORM

FOR NPS USE ONLY

RECEIVED

DATE ENTERED

SEE INSTRUCTIONS IN *HOW TO COMPLETE NATIONAL REGISTER FORMS*  
TYPE ALL ENTRIES --ENCLOSE WITH PHOTOGRAPH.

**1 NAME**

HISTORIC Kalaupapa Leprosy Settlement

AND/OR COMMON

Kalawao Settlement, Kalaupapa Peninsula

**2 LOCATION**

CITY, TOWN Kalaupapa Peninsula VICINITY OF Moloka'i COUNTY Kalawao and STATE Hawaii  
Island Maui

**3 PHOTO REFERENCE**

PHOTO CREDIT NPS (Apple)

DATE OF PHOTO 8/6/75

NEGATIVE FILED AT HI State Office, NPS, 677 Ala Moana Blvd., Suite 512, Honolulu, HI 96813

**4 IDENTIFICATION**

DESCRIBE VIEW, DIRECTION, ETC. IF DISTRICT, GIVE BUILDING NAME & STREET

PHOTO NO. Roll V-  
23

Lighter landing, Kalawao. Believed built 1909 for  
U. S. Leprosy Investigation Station. Looking west.

KALAUPAPA NO. 7





UNITED STATES DEPARTMENT OF THE INTERIOR  
NATIONAL PARK SERVICE

NATIONAL REGISTER OF HISTORIC PLACES  
PROPERTY PHOTOGRAPH FORM

FOR NPS USE ONLY

RECEIVED

DATE ENTERED

SEE INSTRUCTIONS IN *HOW TO COMPLETE NATIONAL REGISTER FORMS*  
TYPE ALL ENTRIES -- ENCLOSE WITH PHOTOGRAPH

1 NAME

HISTORIC Kalaupapa Leprosy Settlement

AND/OR COMMON

Kalawao Settlement, Kalaupapa Peninsula

2 LOCATION

CITY, TOWN Kalaupapa Peninsula VICINITY OF Moloka'i COUNTY Kalawao and STATE Hawaii  
Island Maui

3 PHOTO REFERENCE

PHOTO CREDIT NPS (Apple)

DATE OF PHOTO 8/6/75

NEGATIVE FILED AT HI State Office, NPS, 677 Ala Moana Blvd., Suite 512, Honolulu, HI 96813

4 IDENTIFICATION

DESCRIBE VIEW, DIRECTION, ETC. IF DISTRICT, GIVE BUILDING NAME & STREET

Ananaluwahine Cave. A collapsed lava tube used as a dwelling.  
The lower end opens on the sea cliffs. Bishop Museum site #290.

PHOTO NO. Roll V-  
17A

KALAUAPAPA NO. 8





UNITED STATES DEPARTMENT OF THE INTERIOR  
NATIONAL PARK SERVICE

NATIONAL REGISTER OF HISTORIC PLACES  
PROPERTY PHOTOGRAPH FORM

FOR NPS USE ONLY

RECEIVED

DATE ENTERED

SEE INSTRUCTIONS IN *HOW TO COMPLETE NATIONAL REGISTER FORMS*  
TYPE ALL ENTRIES -- ENCLOSE WITH PHOTOGRAPH.

**1** NAME

HISTORIC Kalaupapa Leprosy Settlement

AND/OR COMMON

Kalawao Settlement, Kalaupapa Peninsula

**2** LOCATION

CITY, TOWN Kalaupapa Peninsula VICINITY OF Moloka'i COUNTY Kalawao and STATE Hawaii  
Island Maui

**3** PHOTO REFERENCE

PHOTO CREDIT NPS (Apple)

DATE OF PHOTO 8/6/75

NEGATIVE FILED AT HI State Office, NPS, 677 Ala Moana Blvd., Suite 512, Honolulu, HI 96813

**4** IDENTIFICATION

DESCRIBE VIEW, DIRECTION, ETC. IF DISTRICT, GIVE BUILDING NAME & STREET

Kauhako crater with lake, in Makanalua ahupau'a.

PHOTO NO. Roll II-  
32A





SITE OF  
**FIRST SETTLEMENT**  
EST. - 1865  
KALAWAO, MOLOKAI, HI



UNITED STATES DEPARTMENT OF THE INTERIOR  
NATIONAL PARK SERVICE

NATIONAL REGISTER OF HISTORIC PLACES  
PROPERTY PHOTOGRAPH FORM

FOR NPS USE ONLY

RECEIVED

DATE ENTERED

SEE INSTRUCTIONS IN *HOW TO COMPLETE NATIONAL REGISTER FORMS*  
TYPE ALL ENTRIES -- ENCLOSE WITH PHOTOGRAPH.

1 NAME

HISTORIC Kalaupapa Leprosy Settlement

AND/OR COMMON

Kalawao Settlement, Kalaupapa Peninsula

2 LOCATION

CITY, TOWN Kalaupapa Peninsula VICINITY OF Moloka'i COUNTY Kalawao and STATE Hawaii  
Island Maui

3 PHOTO REFERENCE

PHOTO CREDIT NPS (Apple)

DATE OF PHOTO 8/6/75

NEGATIVE FILED AT HI State Office, NPS, 677 Ala Moana Blvd., Suite 512, Honolulu, HI 96813

4 IDENTIFICATION

DESCRIBE VIEW, DIRECTION, ETC. IF DISTRICT, GIVE BUILDING NAME & STREET

PHOTO NO. Roll V-29

Islands offshore of Waikolu valley. Looking west.





UNITED STATES DEPARTMENT OF THE INTERIOR  
NATIONAL PARK SERVICE

NATIONAL REGISTER OF HISTORIC PLACES  
PROPERTY PHOTOGRAPH FORM

FOR NPS USE ONLY

RECEIVED

DATE ENTERED

SEE INSTRUCTIONS IN *HOW TO COMPLETE NATIONAL REGISTER FORMS*  
TYPE ALL ENTRIES -- ENCLOSE WITH PHOTOGRAPH.

1 NAME

HISTORIC Kalaupapa Leprosy Settlement

AND/OR COMMON

Kalawao Settlement, Kalaupapa Peninsula

2 LOCATION

CITY, TOWN Kalaupapa Peninsula VICINITY OF Moloka'i COUNTY Kalawao and STATE Hawaii  
Island Maui

3 PHOTO REFERENCE

PHOTO CREDIT NPS (Apple)

DATE OF PHOTO 8/6/75

NEGATIVE FILED AT HI State Office, NPS, 677 Ala Moana Blvd., Suite 512, Honolulu, HI 96813

4 IDENTIFICATION

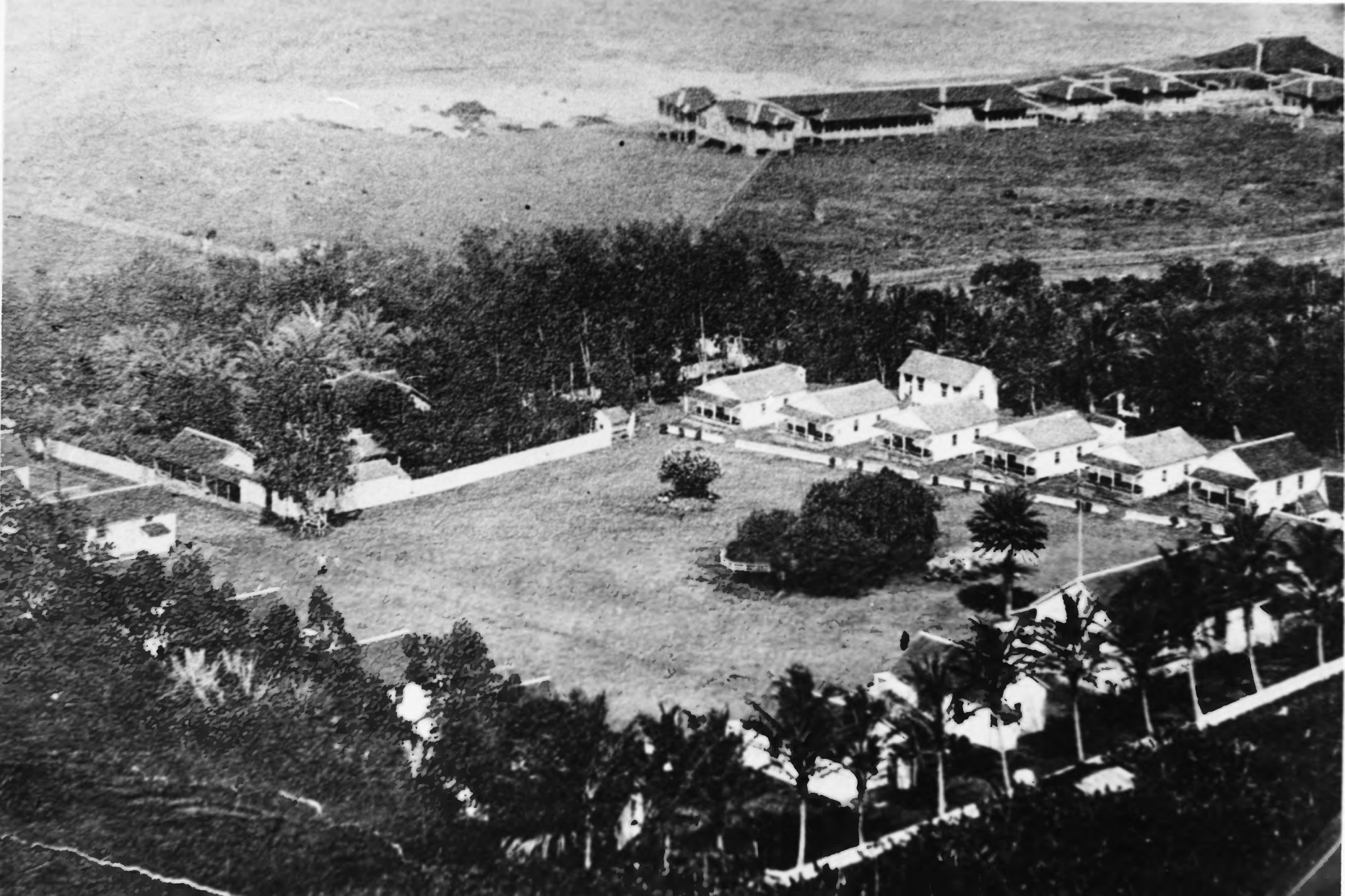
DESCRIBE VIEW, DIRECTION, ETC. IF DISTRICT. GIVE BUILDING NAME & STREET

A rectangular stone walled enclosure, probably a house site from the leper period. Looking south. Waikolu valley in left background; Waialeia valley in right background.

PHOTO NO. Roll V-  
12A

KALAUPAPA NO. 11





UNITED STATES DEPARTMENT OF THE INTERIOR  
NATIONAL PARK SERVICE

NATIONAL REGISTER OF HISTORIC PLACES  
PROPERTY PHOTOGRAPH FORM

FOR NPS USE ONLY

RECEIVED

DATE ENTERED

SEE INSTRUCTIONS IN *HOW TO COMPLETE NATIONAL REGISTER FORMS*  
TYPE ALL ENTRIES -- ENCLOSE WITH PHOTOGRAPH.

1 NAME

HISTORIC Kalaupapa Leprosy Settlement

AND/OR COMMON

Kalawao Settlement, Kalaupapa Peninsula

2 LOCATION

CITY/TOWN Kalaupapa Peninsula VICINITY OF Moloka'i Island COUNTY Kalawao and Maui STATE Hawaii

3 PHOTO REFERENCE

PHOTO CREDIT NPS (Apple)

DATE OF PHOTO 8/6/75 (copy of early photograph made ca. 1915)

NEGATIVE FILED AT HI State Office, NPS, 677 Ala Moana Blvd., Suite 512, Honolulu, HI 96813

4 IDENTIFICATION

DESCRIBE VIEW, DIRECTION, ETC. IF DISTRICT, GIVE BUILDING NAME & STREET

PHOTO NO. Roll IV-23

Kalawao Settlement, ca. 1915. Foreground: Baldwin Home for Boys. Background: U.S. Leprosy Investigation Hospital, after closing. Looking northeast.

KALAUAPAPA NO. 12





UNITED STATES DEPARTMENT OF THE INTERIOR  
NATIONAL PARK SERVICE

NATIONAL REGISTER OF HISTORIC PLACES  
PROPERTY PHOTOGRAPH FORM

FOR NPS USE ONLY

RECEIVED

DATE ENTERED

SEE INSTRUCTIONS IN *HOW TO COMPLETE NATIONAL REGISTER FORMS*  
TYPE ALL ENTRIES -- ENCLOSE WITH PHOTOGRAPH.

1 NAME

HISTORIC Kalaupapa Leprosy Settlement

AND/OR COMMON

Kalawao Settlement, Kalaupapa Peninsula

2 LOCATION

CITY/TOWN Kalaupapa Peninsula VICINITY OF Moloka'i COUNTY Kalawao and STATE Hawaii  
Island Maui

3 PHOTO REFERENCE

PHOTO CREDIT NPS (Apple)

DATE OF PHOTO 8/6/75

NEGATIVE FILED AT HI State Office, NPS, 677 Ala Moana Blvd., Suite 512, Honolulu, HI 96813

4 IDENTIFICATION

DESCRIBE VIEW, DIRECTION, ETC. IF DISTRICT, GIVE BUILDING NAME & STREET

Kalawina Church building, Kalaupapa. Built 1847,  
rebuilt 1853; now used for storage. Looking northwest.

PHOTO NO. Roll III-  
20





UNITED STATES DEPARTMENT OF THE INTERIOR  
NATIONAL PARK SERVICE

NATIONAL REGISTER OF HISTORIC PLACES  
PROPERTY PHOTOGRAPH FORM

FOR NPS USE ONLY

RECEIVED

DATE ENTERED

SEE INSTRUCTIONS IN *HOW TO COMPLETE NATIONAL REGISTER FORMS*  
TYPE ALL ENTRIES --ENCLOSE WITH PHOTOGRAPH.

1 NAME

HISTORIC Kalaupapa Leprosy Settlement

AND/OR COMMON

Kalawao Settlement, Kalaupapa Peninsula

2 LOCATION

CITY/TOWN Kalaupapa Peninsula VICINITY OF Moloka'i COUNTY Kalawao and STATE Hawaii  
Island Maui

3 PHOTO REFERENCE

PHOTO CREDIT NPS (Apple)

DATE OF PHOTO 8/6/75

NEGATIVE FILED AT HI State Office, NPS, 677 Ala Moana Blvd., Suite 512, Honolulu, HI 96813

4 IDENTIFICATION

DESCRIBE VIEW, DIRECTION, ETC. IF DISTRICT, GIVE BUILDING NAME & STREET

PHOTO NO. Roll V-31

Siloama Church, Kalawao. Looking southwest.

KALAUPAPA NO. 14





ST. PHILOMENA  
FATHER DAMIEN'S CHURCH  
WING ON THE LEFT WAS THE  
FIRST CHAPEL BUILT IN 1872  
- P. DAMIEN, O.S.B.

UNITED STATES DEPARTMENT OF THE INTERIOR  
NATIONAL PARK SERVICE

NATIONAL REGISTER OF HISTORIC PLACES  
PROPERTY PHOTOGRAPH FORM

FOR NPS USE ONLY

RECEIVED

DATE ENTERED

SEE INSTRUCTIONS IN *HOW TO COMPLETE NATIONAL REGISTER FORMS*  
TYPE ALL ENTRIES -- ENCLOSE WITH PHOTOGRAPH.

1 NAME

HISTORIC Kalaupapa Leprosy Settlement

AND/OR COMMON

Kalawao Settlement, Kalaupapa Peninsula

2 LOCATION

CITY/TOWN Kalaupapa Peninsula VICINITY OF Moloka'i Island COUNTY Kalawao and Maui STATE Hawaii

3 PHOTO REFERENCE

PHOTO CREDIT NPS (Apple)

DATE OF PHOTO 8/6/75

NEGATIVE FILED AT HI State Office, NPS, 677 Ala Moana Blvd., Suite 512, Honolulu, HI 96813

4 IDENTIFICATION

DESCRIBE VIEW, DIRECTION, ETC. IF DISTRICT, GIVE BUILDING NAME & STREET  
St. Philomena Church, Kalawao. Looking northwest.

PHOTO NO. Roll V-33





UNITED STATES DEPARTMENT OF THE INTERIOR  
NATIONAL PARK SERVICE

NATIONAL REGISTER OF HISTORIC PLACES  
PROPERTY PHOTOGRAPH FORM

FOR NPS USE ONLY

RECEIVED

DATE ENTERED

SEE INSTRUCTIONS IN *HOW TO COMPLETE NATIONAL REGISTER FORMS*  
TYPE ALL ENTRIES -- ENCLOSE WITH PHOTOGRAPH

1 NAME

HISTORIC Kalaupapa Leprosy Settlement

AND/OR COMMON

Kalawao Settlement, Kalaupapa Peninsula

2 LOCATION

CITY, TOWN Kalaupapa Peninsula — VICINITY OF Moloka'i COUNTY Kalawao and STATE Hawaii  
Island Maui

3 PHOTO REFERENCE

PHOTO CREDIT NPS (Apple)

DATE OF PHOTO 8/6/75

NEGATIVE FILED AT HI State Office, NPS, 677 Ala Moana Blvd., Suite 512, Honolulu, HI 96813

4 IDENTIFICATION

DESCRIBE VIEW, DIRECTION, ETC. IF DISTRICT, GIVE BUILDING NAME & STREET

Ruins, Baldwin Home for Boys, ~~Kalaupapa~~  
Kalawao

PHOTO NO. Roll II-  
19A

KALAUAPAPA NO. 16





UNITED STATES DEPARTMENT OF THE INTERIOR  
NATIONAL PARK SERVICE

NATIONAL REGISTER OF HISTORIC PLACES  
PROPERTY PHOTOGRAPH FORM

FOR NPS USE ONLY

RECEIVED

DATE ENTERED

SEE INSTRUCTIONS IN *HOW TO COMPLETE NATIONAL REGISTER FORMS*  
TYPE ALL ENTRIES -- ENCLOSE WITH PHOTOGRAPH.

1 NAME

HISTORIC Kalaupapa Leprosy Settlement

AND/OR COMMON

Kalawao Settlement, Kalaupapa Peninsula

2 LOCATION

CITY, TOWN Kalaupapa Peninsula VICINITY OF Moloka'i Island COUNTY Kalawao and Maui STATE Hawaii

3 PHOTO REFERENCE

PHOTO CREDIT NPS (Apple)

DATE OF PHOTO 8/6/75

NEGATIVE FILED AT HI State Office, NPS, 677 Ala Moana Blvd., Suite 512, Honolulu, HI 96813

4 IDENTIFICATION

DESCRIBE VIEW, DIRECTION, ETC. IF DISTRICT, GIVE BUILDING NAME & STREET  
Rear view of Bishop Home for Girls, Kalaupapa.  
Looking northeast.

PHOTO NO. Roll III-  
10

KALAUPAPA NO. 17





UNITED STATES DEPARTMENT OF THE INTERIOR  
NATIONAL PARK SERVICE

NATIONAL REGISTER OF HISTORIC PLACES  
PROPERTY PHOTOGRAPH FORM

FOR NPS USE ONLY

RECEIVED

DATE ENTERED

SEE INSTRUCTIONS IN *HOW TO COMPLETE NATIONAL REGISTER FORMS*  
TYPE ALL ENTRIES -- ENCLOSE WITH PHOTOGRAPH

1 NAME

HISTORIC Kalaupapa Leprosy Settlement

AND/OR COMMON

Kalawao Settlement, Kalaupapa Peninsula

2 LOCATION

CITY, TOWN Kalaupapa Peninsula VICINITY OF Moloka'i COUNTY Kalawao and STATE Hawaii  
Island Maui

3 PHOTO REFERENCE

PHOTO CREDIT NPS (Apple)

DATE OF PHOTO 8/6/75

NEGATIVE FILED AT HI State Office, NPS, 677 Ala Moana Blvd., Suite 512, Honolulu, HI 96813

4 IDENTIFICATION

DESCRIBE VIEW, DIRECTION, ETC. IF DISTRICT, GIVE BUILDING NAME & STREET

PHOTO NO. Roll III-  
11

St. Elizabeth's chapel, Bishop Home for Girls, Kalaupapa.  
Looking southeast.





UNITED STATES DEPARTMENT OF THE INTERIOR  
NATIONAL PARK SERVICE

NATIONAL REGISTER OF HISTORIC PLACES  
PROPERTY PHOTOGRAPH FORM

FOR NPS USE ONLY

RECEIVED

DATE ENTERED

SEE INSTRUCTIONS IN *HOW TO COMPLETE NATIONAL REGISTER FORMS*  
TYPE ALL ENTRIES -- ENCLOSE WITH PHOTOGRAPH.

1 NAME

HISTORIC Kalaupapa Leprosy Settlement

AND/OR COMMON

Kalawao Settlement, Kalaupapa Peninsula

2 LOCATION

CITY, TOWN Kalaupapa Peninsula VICINITY OF Moloka'i COUNTY Kalawao and STATE Hawaii  
Island Maui

3 PHOTO REFERENCE

PHOTO CREDIT NPS (Apple)

DATE OF PHOTO 8/6/75

NEGATIVE FILED AT HI State Office, NPS, 677 Ala Moana Blvd., Suite 512, Honolulu, HI 96813

4 IDENTIFICATION

DESCRIBE VIEW, DIRECTION, ETC. IF DISTRICT, GIVE BUILDING NAME & STREET

PHOTO NO. Roll III-  
8

Abandoned house behind St. Elizabeth's chapel, Bishop Home  
for Girls, Kalaupapa. Looking northeast.

KALAUPAPA NO. 19





UNITED STATES DEPARTMENT OF THE INTERIOR  
NATIONAL PARK SERVICE

NATIONAL REGISTER OF HISTORIC PLACES  
PROPERTY PHOTOGRAPH FORM

FOR NPS USE ONLY

RECEIVED

DATE ENTERED

SEE INSTRUCTIONS IN *HOW TO COMPLETE NATIONAL REGISTER FORMS*  
TYPE ALL ENTRIES -- ENCLOSE WITH PHOTOGRAPH.

1 NAME

HISTORIC Kalaupapa Leprosy Settlement

AND/OR COMMON

Kalawao Settlement, Kalaupapa Peninsula

2 LOCATION

CITY, TOWN Kalaupapa Peninsula VICINITY OF Moloka'i COUNTY Kalawao and STATE Hawaii  
Island Maui

3 PHOTO REFERENCE

PHOTO CREDIT NPS (Apple)

DATE OF PHOTO 8/6/75

NEGATIVE FILED AT HI State Office, NPS, 677 Ala Moana Blvd., Suite 512, Honolulu, HI 96813

4 IDENTIFICATION

DESCRIBE VIEW, DIRECTION, ETC. IF DISTRICT, GIVE BUILDING NAME & STREET  
St Francis Church, Kalaupapa. Looking west.

PHOTO NO. Roll III-  
15



A black and white photograph of a cemetery. In the foreground, a weathered wooden post stands vertically, with a dark rectangular sign attached to it. The sign contains the text "OLD FEDERAL HOSPITAL" in large, bold, white capital letters, and "1908-15" in smaller white capital letters below it. A small circular emblem is visible on the left side of the sign. Behind the post, a wire fence runs across the frame. The background is filled with numerous other wooden posts of varying heights, some with small, illegible signs. The area is heavily overgrown with dense, leafy vegetation and palm trees, creating a thick canopy of foliage. The lighting is bright, casting shadows on the ground and the posts.

**OLD FEDERAL  
HOSPITAL**  
1908-15

UNITED STATES DEPARTMENT OF THE INTERIOR  
NATIONAL PARK SERVICE

NATIONAL REGISTER OF HISTORIC PLACES  
PROPERTY PHOTOGRAPH FORM

FOR NPS USE ONLY

RECEIVED

DATE ENTERED

SEE INSTRUCTIONS IN *HOW TO COMPLETE NATIONAL REGISTER FORMS*  
TYPE ALL ENTRIES -- ENCLOSE WITH PHOTOGRAPH.

**1** NAME

HISTORIC Kalaupapa Leprosy Settlement

AND/OR COMMON

Kalawao Settlement, Kalaupapa Peninsula

**2** LOCATION

CITY, TOWN Kalaupapa Peninsula VICINITY OF Moloka'i COUNTY Kalawao and STATE Hawaii  
Island Maui

**3** PHOTO REFERENCE

PHOTO CREDIT NPS (Apple)

DATE OF PHOTO 8/6/75

NEGATIVE FILED AT HI State Office, NPS, 677 Ala Moana Blvd., Suite 512, Honolulu, HI 96813

**4** IDENTIFICATION

DESCRIBE VIEW, DIRECTION, ETC. IF DISTRICT, GIVE BUILDING NAME & STREET

Pillars, U. S. Leprosy Investigation Station, Kalawao.

PHOTO NO. Roll II-  
14A





UNITED STATES DEPARTMENT OF THE INTERIOR  
NATIONAL PARK SERVICE

NATIONAL REGISTER OF HISTORIC PLACES  
PROPERTY PHOTOGRAPH FORM

FOR NPS USE ONLY

RECEIVED

DATE ENTERED

SEE INSTRUCTIONS IN *HOW TO COMPLETE NATIONAL REGISTER FORMS*  
TYPE ALL ENTRIES -- ENCLOSE WITH PHOTOGRAPH.

1 NAME

HISTORIC Kalaupapa Leprosy Settlement

AND/OR COMMON

Kalawao Settlement, Kalaupapa Peninsula

2 LOCATION

CITY, TOWN Kalaupapa Peninsula VICINITY OF Moloka'i COUNTY Kalawao and STATE Hawaii  
Island Maui

3 PHOTO REFERENCE

PHOTO CREDIT NPS (Apple)

DATE OF PHOTO 8/6/75

NEGATIVE FILED AT HI State Office, NPS, 677 Ala Moana Blvd., Suite 512, Honolulu, HI 96813

4 IDENTIFICATION

DESCRIBE VIEW, DIRECTION, ETC. IF DISTRICT, GIVE BUILDING NAME & STREET

Chimney of bakery, Kalawao. Looking northeast.

PHOTO NO. Roll II-  
23

KALAUAPAPA NO. 22





UNITED STATES DEPARTMENT OF THE INTERIOR  
NATIONAL PARK SERVICE

NATIONAL REGISTER OF HISTORIC PLACES  
PROPERTY PHOTOGRAPH FORM

FOR NPS USE ONLY

RECEIVED

DATE ENTERED

SEE INSTRUCTIONS IN HOW TO COMPLETE NATIONAL REGISTER FORMS  
TYPE ALL ENTRIES -- ENCLOSE WITH PHOTOGRAPH.

1 NAME

HISTORIC Kalaupapa Leprosy Settlement

AND/OR COMMON

Kalawao Settlement, Kalaupapa Peninsula

2 LOCATION

CITY, TOWN Kalaupapa Peninsula VICINITY OF Moloka'i COUNTY Kalawao and STATE Hawaii  
Island Maui

3 PHOTO REFERENCE

PHOTO CREDIT NPS (Apple)

DATE OF PHOTO 8/6/75

NEGATIVE FILED AT HI State Office, NPS, 677 Ala Moana Blvd., Suite 512, Honolulu, HI 96813

4 IDENTIFICATION

DESCRIBE VIEW, DIRECTION, ETC. IF DISTRICT, GIVE BUILDING NAME & STREET

PHOTO NO. Roll I-  
30A

Steps, Mormon beach house, Makanalua.  
Steps are west of lighthouse. Looking west.





UNITED STATES DEPARTMENT OF THE INTERIOR  
NATIONAL PARK SERVICE

NATIONAL REGISTER OF HISTORIC PLACES  
PROPERTY PHOTOGRAPH FORM

FOR NPS USE ONLY

RECEIVED

DATE ENTERED

SEE INSTRUCTIONS IN *HOW TO COMPLETE NATIONAL REGISTER FORMS*  
TYPE ALL ENTRIES -- ENCLOSE WITH PHOTOGRAPH

1 NAME

HISTORIC Kalaupapa Leprosy Settlement

AND/OR COMMON

Kalawao Settlement, Kalaupapa Peninsula

2 LOCATION

CITY, TOWN Kalaupapa Peninsula VICINITY OF Moloka'i COUNTY Kalawao and STATE Hawaii  
Island Maui

3 PHOTO REFERENCE

PHOTO CREDIT NPS (Apple)

DATE OF PHOTO 8/6/75

NEGATIVE FILED AT HI State Office, NPS, 677 Ala Moana Blvd., Suite 512, Honolulu, HI 96813

4 IDENTIFICATION

DESCRIBE VIEW, DIRECTION, ETC. IF DISTRICT, GIVE BUILDING NAME & STREET

Patient's cottage (Marks Sr.), Kalaupapa.

PHOTO NO. Roll III-  
27





UNITED STATES DEPARTMENT OF THE INTERIOR  
NATIONAL PARK SERVICE

NATIONAL REGISTER OF HISTORIC PLACES  
PROPERTY PHOTOGRAPH FORM

FOR NPS USE ONLY

RECEIVED

DATE ENTERED

SEE INSTRUCTIONS IN *HOW TO COMPLETE NATIONAL REGISTER FORMS*  
TYPE ALL ENTRIES -- ENCLOSE WITH PHOTOGRAPH.

1 NAME

HISTORIC Kalaupapa Leprosy Settlement

AND/OR COMMON

Kalawao Settlement, Kalaupapa Peninsula

2 LOCATION

CITY, TOWN Kalaupapa Peninsula VICINITY OF Moloka'i COUNTY Kalawao and STATE Hawaii  
Island Maui

3 PHOTO REFERENCE

PHOTO CREDIT NPS (Apple)

DATE OF PHOTO 8/6/75

NEGATIVE FILED AT HI State Office, NPS, 677 Ala Moana Blvd., Suite 512, Honolulu, HI 96813

4 IDENTIFICATION

DESCRIBE VIEW, DIRECTION, ETC. IF DISTRICT, GIVE BUILDING NAME & STREET

Patient's cottage (Sara's), Kalaupapa.

PHOTO NO. Roll III-  
26





UNITED STATES DEPARTMENT OF THE INTERIOR  
NATIONAL PARK SERVICE

NATIONAL REGISTER OF HISTORIC PLACES  
PROPERTY PHOTOGRAPH FORM

FOR NPS USE ONLY

RECEIVED

DATE ENTERED

SEE INSTRUCTIONS IN *HOW TO COMPLETE NATIONAL REGISTER FORMS*  
TYPE ALL ENTRIES -- ENCLOSE WITH PHOTOGRAPH

1 NAME

HISTORIC Kalaupapa Leprosy Settlement

AND/OR COMMON

Kalawao Settlement, Kalaupapa Peninsula

2 LOCATION

CITY/TOWN Kalaupapa Peninsula VICINITY OF Moloka'i COUNTY Kalawao and STATE Hawaii  
Island Maui

3 PHOTO REFERENCE

PHOTO CREDIT NPS (Apple)

DATE OF PHOTO 8/6/75

NEGATIVE FILED AT HI State Office, NPS, 677 Ala Moana Blvd., Suite 512, Honolulu, HI 96813

4 IDENTIFICATION

DESCRIBE VIEW, DIRECTION, ETC. IF DISTRICT, GIVE BUILDING NAME & STREET

Patient's cottage, Kalaupapa. Looking southwest.

PHOTO NO. Roll III-  
6





UNITED STATES DEPARTMENT OF THE INTERIOR  
NATIONAL PARK SERVICE

NATIONAL REGISTER OF HISTORIC PLACES  
PROPERTY PHOTOGRAPH FORM

FOR NPS USE ONLY

RECEIVED

DATE ENTERED

SEE INSTRUCTIONS IN *HOW TO COMPLETE NATIONAL REGISTER FORMS*  
TYPE ALL ENTRIES -- ENCLOSE WITH PHOTOGRAPH.

1 NAME

HISTORIC Kalaupapa Leprosy Settlement

AND/OR COMMON

Kalawao Settlement, Kalaupapa Peninsula

2 LOCATION

CITY, TOWN Kalaupapa Peninsula VICINITY OF Moloka'i COUNTY Kalawao and STATE Hawaii  
Island Maui

3 PHOTO REFERENCE

PHOTO CREDIT NPS (Apple)

DATE OF PHOTO 8/6/75

NEGATIVE FILED AT HI State Office, NPS, 677 Ala Moana Blvd., Suite 512, Honolulu, HI 96813

4 IDENTIFICATION

DESCRIBE VIEW, DIRECTION, ETC. IF DISTRICT, GIVE BUILDING NAME & STREET  
Kanaana Hou church, Kalaupapa. Looking southwest.

PHOTO NO. Roll III-  
12





UNITED STATES DEPARTMENT OF THE INTERIOR  
NATIONAL PARK SERVICE

NATIONAL REGISTER OF HISTORIC PLACES  
PROPERTY PHOTOGRAPH FORM

FOR NPS USE ONLY

RECEIVED

DATE ENTERED

SEE INSTRUCTIONS IN *HOW TO COMPLETE NATIONAL REGISTER FORMS*  
TYPE ALL ENTRIES -- ENCLOSE WITH PHOTOGRAPH.

1 NAME

HISTORIC Kalaupapa Leprosy Settlement

AND/OR COMMON

Kalawao Settlement, Kalaupapa Peninsula

2 LOCATION

CITY, TOWN Kalaupapa Peninsula VICINITY OF Moloka'i COUNTY Kalawao and STATE Hawaii  
Island Maui

3 PHOTO REFERENCE

PHOTO CREDIT NPS (Apple)

DATE OF PHOTO 8/6/75

NEGATIVE FILED AT HI State Office, NPS, 677 Ala Moana Blvd., Suite 512, Honolulu, HI 96813

4 IDENTIFICATION

DESCRIBE VIEW, DIRECTION, ETC. IF DISTRICT, GIVE BUILDING NAME & STREET

Bay View Home, Kalaupapa.

PHOTO NO. Roll III-  
31

KALAUPAPA NO. 28





UNITED STATES DEPARTMENT OF THE INTERIOR  
NATIONAL PARK SERVICE

NATIONAL REGISTER OF HISTORIC PLACES  
PROPERTY PHOTOGRAPH FORM

FOR NPS USE ONLY

RECEIVED

DATE ENTERED

SEE INSTRUCTIONS IN *HOW TO COMPLETE NATIONAL REGISTER FORMS*  
TYPE ALL ENTRIES -- ENCLOSE WITH PHOTOGRAPH.

1 NAME

HISTORIC Kalaupapa Leprosy Settlement

AND/OR COMMON

Kalawao Settlement, Kalaupapa Peninsula

2 LOCATION

CITY, TOWN Kalaupapa Peninsula VICINITY OF Moloka'i COUNTY Kalawao and STATE Hawaii  
Island Maui

3 PHOTO REFERENCE

PHOTO CREDIT NPS (Apple)

DATE OF PHOTO 8/6/75

NEGATIVE FILED AT HI State Office, NPS, 677 Ala Moana Blvd., Suite 512, Honolulu, HI 96813

4 IDENTIFICATION

DESCRIBE VIEW, DIRECTION, ETC. IF DISTRICT, GIVE BUILDING NAME & STREET  
Hospital, Kalaupapa. Looking north.

PHOTO NO. Roll III-  
32





PASCHOAL  
COMMUNITY HALL

Work Progress  
of the ...

UNITED STATES DEPARTMENT OF THE INTERIOR  
NATIONAL PARK SERVICE

NATIONAL REGISTER OF HISTORIC PLACES  
PROPERTY PHOTOGRAPH FORM

FOR NPS USE ONLY

RECEIVED

DATE ENTERED

SEE INSTRUCTIONS IN *HOW TO COMPLETE NATIONAL REGISTER FORMS*  
TYPE ALL ENTRIES -- ENCLOSE WITH PHOTOGRAPH.

1 NAME

HISTORIC Kalaupapa Leprosy Settlement

AND/OR COMMON

Kalawao Settlement, Kalaupapa Peninsula

2 LOCATION

CITY, TOWN Kalaupapa Peninsula VICINITY OF Moloka'i COUNTY Kalawao and STATE Hawaii  
Island Maui

3 PHOTO REFERENCE

PHOTO CREDIT NPS (Apple)

DATE OF PHOTO 8/6/75

NEGATIVE FILED AT HI State Office, NPS, 677 Ala Moana Blvd., Suite 512, Honolulu, HI 96813

4 IDENTIFICATION

DESCRIBE VIEW, DIRECTION, ETC. IF DISTRICT, GIVE BUILDING NAME & STREET  
Paschoal Community Hall, Kalaupapa.  
Looking northeast.

PHOTO NO. Roll III-  
17





UNITED STATES DEPARTMENT OF THE INTERIOR  
NATIONAL PARK SERVICE

NATIONAL REGISTER OF HISTORIC PLACES  
PROPERTY PHOTOGRAPH FORM

FOR NPS USE ONLY

RECEIVED

DATE ENTERED

SEE INSTRUCTIONS IN *HOW TO COMPLETE NATIONAL REGISTER FORMS*  
TYPE ALL ENTRIES -- ENCLOSE WITH PHOTOGRAPH

1 NAME

HISTORIC Kalaupapa Leprosy Settlement

AND/OR COMMON

Kalawao Settlement, Kalaupapa Peninsula

2 LOCATION

CITY, TOWN Kalaupapa Peninsula VICINITY OF Moloka'i COUNTY Kalawao and STATE Hawaii  
Island Maui

3 PHOTO REFERENCE

PHOTO CREDIT NPS (Apple)

DATE OF PHOTO 8/6/75

NEGATIVE FILED AT HI State Office, NPS, 677 Ala Moana Blvd., Suite 512, Honolulu, HI 96813

4 IDENTIFICATION

DESCRIBE VIEW, DIRECTION, ETC. IF DISTRICT, GIVE BUILDING NAME & STREET  
Administrator's house, Staff row, Kalaupapa.

PHOTO NO. Roll III-  
23





UNITED STATES DEPARTMENT OF THE INTERIOR  
NATIONAL PARK SERVICE

NATIONAL REGISTER OF HISTORIC PLACES  
PROPERTY PHOTOGRAPH FORM

FOR NPS USE ONLY

RECEIVED

DATE ENTERED

SEE INSTRUCTIONS IN *HOW TO COMPLETE NATIONAL REGISTER FORMS*  
TYPE ALL ENTRIES -- ENCLOSE WITH PHOTOGRAPH.

1 NAME

HISTORIC Kalaupapa Leprosy Settlement

AND/OR COMMON

Kalawao Settlement, Kalaupapa Peninsula

2 LOCATION

CITY, TOWN Kalaupapa Peninsula VICINITY OF Moloka'i COUNTY Kalawao and STATE Hawaii  
Island Maui

3 PHOTO REFERENCE

PHOTO CREDIT NPS (Apple)

DATE OF PHOTO 8/6/75

NEGATIVE FILED AT HI State Office, NPS, 677 Ala Moana Blvd., Suite 512, Honolulu, HI 96813

4 IDENTIFICATION

DESCRIBE VIEW, DIRECTION, ETC. IF DISTRICT. GIVE BUILDING NAME & STREET

(Center): Former "doctor's house" now staff dining hall,  
Staff row, Kalaupapa.  
Looking northeast.

PHOTO NO. Roll III-  
24

KALAUPAPA NO. 32





UNITED STATES DEPARTMENT OF THE INTERIOR  
NATIONAL PARK SERVICE

NATIONAL REGISTER OF HISTORIC PLACES  
PROPERTY PHOTOGRAPH FORM

FOR NPS USE ONLY

RECEIVED

DATE ENTERED

SEE INSTRUCTIONS IN *HOW TO COMPLETE NATIONAL REGISTER FORMS*  
TYPE ALL ENTRIES -- ENCLOSE WITH PHOTOGRAPH

1 NAME

HISTORIC Kalaupapa Leprosy Settlement

AND/OR COMMON

Kalawao Settlement, Kalaupapa Peninsula

2 LOCATION

CITY, TOWN Kalaupapa Peninsula VICINITY OF Moloka'i COUNTY Kalawao and STATE Hawaii  
Island Maui

3 PHOTO REFERENCE

PHOTO CREDIT NPS (Apple)

DATE OF PHOTO 8/6/75

NEGATIVE FILED AT HI State Office, NPS, 677 Ala Moana Blvd., Suite 512, Honolulu, HI 96813

4 IDENTIFICATION

DESCRIBE VIEW, DIRECTION, ETC. IF DISTRICT, GIVE BUILDING NAME & STREET

On the flats along the east side of the peninsula are hundreds of C-shaped field shelter sites. View looking south - Waikolu valley in background.

PHOTO NO. Roll V-  
15A

KALAUAPAPA NO. 33





UNITED STATES DEPARTMENT OF THE INTERIOR  
NATIONAL PARK SERVICE

NATIONAL REGISTER OF HISTORIC PLACES  
PROPERTY PHOTOGRAPH FORM

FOR NPS USE ONLY

RECEIVED

DATE ENTERED

SEE INSTRUCTIONS IN *HOW TO COMPLETE NATIONAL REGISTER FORMS*  
TYPE ALL ENTRIES -- ENCLOSE WITH PHOTOGRAPH.

1 NAME

HISTORIC Kalaupapa Leprosy Settlement

AND/OR COMMON

Kalawao Settlement, Kalaupapa Peninsula

2 LOCATION

CITY, TOWN Kalaupapa Peninsula VICINITY OF Moloka'i COUNTY Kalawao and STATE Hawaii  
Island Maui

3 PHOTO REFERENCE

PHOTO CREDIT NPS (Apple)

DATE OF PHOTO 8/6/75

NEGATIVE FILED AT HI State Office, NPS, 677 Ala Moana Blvd., Suite 512, Honolulu, HI 96813

4 IDENTIFICATION

DESCRIBE VIEW, DIRECTION, ETC. IF DISTRICT, GIVE BUILDING NAME & STREET

PHOTO NO. Roll V-  
8A

One of several structures identified by the Bishop Museum as canoe sheds. This one is near a late historic house site. Looking northeast from the entrance of the shelter.

KALAUAPAPA NO. 34





UNITED STATES DEPARTMENT OF THE INTERIOR  
NATIONAL PARK SERVICE

NATIONAL REGISTER OF HISTORIC PLACES  
PROPERTY PHOTOGRAPH FORM

FOR NPS USE ONLY

RECEIVED

DATE ENTERED

SEE INSTRUCTIONS IN *HOW TO COMPLETE NATIONAL REGISTER FORMS*  
TYPE ALL ENTRIES -- ENCLOSE WITH PHOTOGRAPH

**1** NAME

HISTORIC Kalaupapa Leprosy Settlement

AND/OR COMMON

Kalawao Settlement, Kalaupapa Peninsula

**2** LOCATION

CITY, TOWN Kalaupapa Peninsula VICINITY OF Moloka'i COUNTY Kalawao and STATE Hawaii  
Island Maui

**3** PHOTO REFERENCE

PHOTO CREDIT NPS (Apple)

DATE OF PHOTO 8/6/75

NEGATIVE FILED AT HI State Office, NPS, 677 Ala Moana Blvd., Suite 512, Honolulu, HI 96813

**4** IDENTIFICATION

DESCRIBE VIEW, DIRECTION, ETC. IF DISTRICT, GIVE BUILDING NAME & STREET

PHOTO NO. Roll V-  
24A

Near Kalawao Settlement. Hidden in the dense growth of exotic trees and shrubs are numerous archeological features. Destruction of resources by tree roots and roaming cattle.

KALAUPAPA NO. 35





UNITED STATES DEPARTMENT OF THE INTERIOR  
NATIONAL PARK SERVICE

NATIONAL REGISTER OF HISTORIC PLACES  
PROPERTY PHOTOGRAPH FORM

FOR NPS USE ONLY

RECEIVED

DATE ENTERED

SEE INSTRUCTIONS IN *HOW TO COMPLETE NATIONAL REGISTER FORMS*  
TYPE ALL ENTRIES -- ENCLOSE WITH PHOTOGRAPH.

1 NAME

HISTORIC Kalaupapa Leprosy Settlement

AND/OR COMMON

Kalawao Settlement, Kalaupapa Peninsula

2 LOCATION

CITY, TOWN Kalaupapa Peninsula VICINITY OF Moloka'i COUNTY Kalawao and STATE Hawaii  
Island Maui

3 PHOTO REFERENCE

PHOTO CREDIT NPS (Apple)

DATE OF PHOTO 8/6/75

NEGATIVE FILED AT HI State Office, NPS, 677 Ala Moana Blvd., Suite 512, Honolulu, HI 96813

4 IDENTIFICATION

DESCRIBE VIEW, DIRECTION, ETC. IF DISTRICT, GIVE BUILDING NAME & STREET

View from lighthouse looking south. Waikolu and Waihanau valleys in background. Many field shelters and field systems can be seen in the foreground. Kauhako Crater forms the high ground in the center of the photo.

PHOTO NO. Roll I-  
23A

KALAUAPAPA NO. 36





UNITED STATES DEPARTMENT OF THE INTERIOR  
NATIONAL PARK SERVICE

NATIONAL REGISTER OF HISTORIC PLACES  
PROPERTY PHOTOGRAPH FORM

FOR NPS USE ONLY

RECEIVED

DATE ENTERED

SEE INSTRUCTIONS IN *HOW TO COMPLETE NATIONAL REGISTER FORMS*  
TYPE ALL ENTRIES -- ENCLOSE WITH PHOTOGRAPH

1 NAME

HISTORIC Kalaupapa Leprosy Settlement

AND/OR COMMON

Kalawao Settlement, Kalaupapa Peninsula

2 LOCATION

CITY/TOWN Kalaupapa Peninsula VICINITY OF Moloka'i COUNTY Kalawao and STATE Hawaii  
Island Maui

3 PHOTO REFERENCE

PHOTO CREDIT NPS (Apple)

DATE OF PHOTO 8/6/75

NEGATIVE FILED AT HI State Office, NPS, 677 Ala Moana Blvd., Suite 512, Honolulu, HI 96813

4 IDENTIFICATION

DESCRIBE VIEW, DIRECTION, ETC. IF DISTRICT. GIVE BUILDING NAME & STREET

PHOTO NO. Roll V-  
10A

Agricultural complex showing walled planting enclosures.  
Looking south.





UNITED STATES DEPARTMENT OF THE INTERIOR  
NATIONAL PARK SERVICE

NATIONAL REGISTER OF HISTORIC PLACES  
PROPERTY PHOTOGRAPH FORM

FOR NPS USE ONLY

RECEIVED

DATE ENTERED

SEE INSTRUCTIONS IN HOW TO COMPLETE NATIONAL REGISTER FORMS  
TYPE ALL ENTRIES -- ENCLOSE WITH PHOTOGRAPH.

1 NAME

HISTORIC Kalaupapa Leprosy Settlement

AND/OR COMMON

Kalawao Settlement, Kalaupapa Peninsula

2 LOCATION

CITY, TOWN Kalaupapa Peninsula VICINITY OF Moloka'i COUNTY Kalawao and STATE Hawaii  
Island Maui

3 PHOTO REFERENCE

PHOTO CREDIT NPS (Apple)

DATE OF PHOTO 8/6/75

NEGATIVE FILED AT HI State Office, NPS, 677 Ala Moana Blvd., Suite 512, Honolulu, HI 96813

4 IDENTIFICATION

DESCRIBE VIEW, DIRECTION, ETC. IF DISTRICT, GIVE BUILDING NAME & STREET

PHOTO NO. Roll I-  
36A

View from airport toward the lighthouse showing hundreds  
of archeological features.





UNITED STATES DEPARTMENT OF THE INTERIOR  
NATIONAL PARK SERVICE

NATIONAL REGISTER OF HISTORIC PLACES  
PROPERTY PHOTOGRAPH FORM

FOR NPS USE ONLY

RECEIVED

DATE ENTERED

SEE INSTRUCTIONS IN *HOW TO COMPLETE NATIONAL REGISTER FORMS*  
TYPE ALL ENTRIES -- ENCLOSE WITH PHOTOGRAPH

1 NAME

HISTORIC Kalaupapa Leprosy Settlement

AND/OR COMMON

Kalawao Settlement, Kalaupapa Peninsula

2 LOCATION

CITY, TOWN Kalaupapa Peninsula VICINITY OF Moloka'i COUNTY Kalawao and STATE Hawaii  
Island Maui

3 PHOTO REFERENCE

PHOTO CREDIT NPS (Apple)

DATE OF PHOTO 8/6/75

NEGATIVE FILED AT HI State Office, NPS, 677 Ala Moana Blvd., Suite 512, Honolulu, HI 96813

4 IDENTIFICATION

DESCRIBE VIEW, DIRECTION, ETC. IF DISTRICT, GIVE BUILDING NAME & STREET

Seaward of Kalawao Settlement is a temple site constructed  
of very large boulders. The site is in a poor state of repair.  
Looking west toward Kalaupapa.

PHOTO NO. Roll II-  
7A

KALAUAPAPA NO. 39