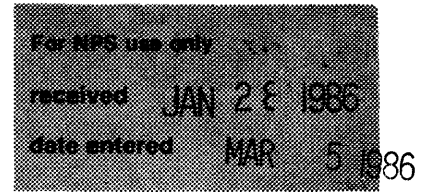


**United States Department of the Interior
National Park Service**

**National Register of Historic Places
Inventory—Nomination Form**



Continuation sheet Thibodaux Multiple Resource Area Item number 7 & 8 Page

Building #12 UTM: 15/711220/3298180
McCULLA HOUSE (RACELAND BANK AND TRUST, THIBODAUx BRANCH)
422 East 1st
c.1907

Builder: John McCulla Contractor: Jospeh A. Robichaux

Local Significance - Architecture

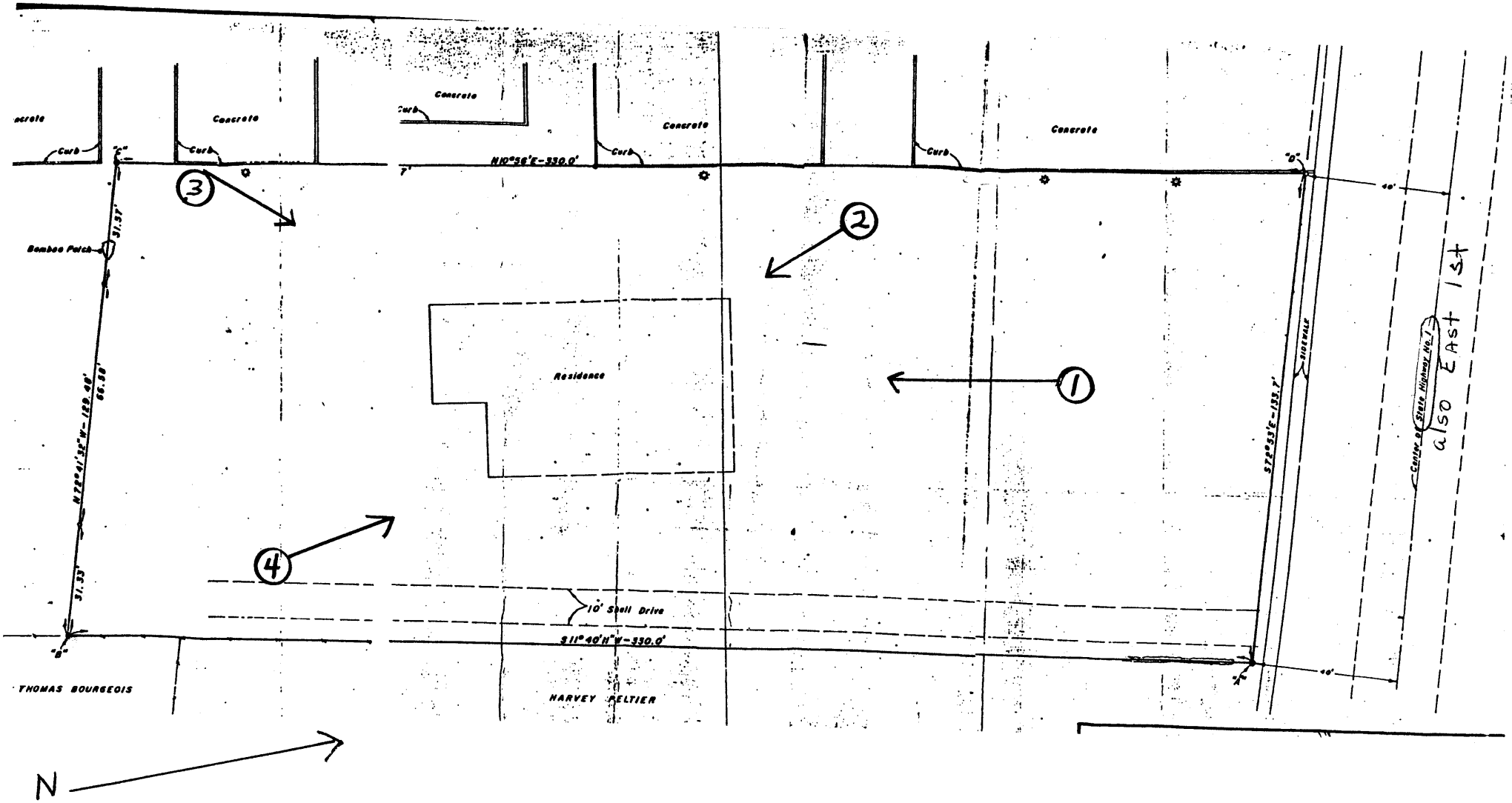
Owner: Raceland Bank and Trust Company
422 East 1st
Thibodaux, LA 70301

The McCulla House is a two story frame Queen Anne Revival residence with Colonial Revival gallery columns. The plan consists of a large "L" shaped front hall with rooms on either side and a rear corridor. The front hall has a fireplace and the rear corridor features a staircase with an Eastlake built-in bench. The interior also features pocket doors and corner fireplaces in the principal rooms, each with a columnar mantel and overmantel.

Noteworthy exterior features include four imbricated shingled gables, an octagonal turret with a faceted roof, a horseshoe arched balcony, an Ionic gallery which wraps around the front with 45 degree turns at the corners, and two polygonal bays, one of which is set under the corner turret.

Since construction, a vault has been installed, a rear wing with drive through bays has been added, a wall has been removed to provide for banking space, and crown molding has been installed throughout. These changes have not affected the principal views and hence have not threatened the house's National Register eligibility.

Significance - Please refer to Queen Anne Revival section of Item 8,



McCulla House (Raceland Bank + Trust)

@ 2 acres

Thibodaux MRA
Lafourche Parish, LA

boundaries

Boundaries follow property lines, as shown above.