



Henderson Commercial Historic District  
Sibley County, MN.  
# 09257-18

North Side of Main Street, Left to Right Buildings Nos. 6 through 18

Henderson, MN.

Liz Holum Johnson

May, 1987

MINNESOTA HISTORICAL SOCIETY,

AV Department,

690 CEDAR ST., ST. PAUL, MN. 55101

Looking NE

From the Collection of the  
**MINNESOTA HISTORICAL SOCIETY**

DO NOT REPRODUCE  
WITHOUT WRITTEN PERMISSION

**NOTICE**

This Material May Be  
Protected By Copyright  
(Law Title 17 U.S. Code)



Henderson Commercial Historic District  
Sibley County, MN.  
#09239-12

Left to Right:

501 MAIN ST. (11); 503-505 MAIN ST. (12); 507 MAIN ST. (13)

HENDERSON COMMERCIAL HISTORIC DISTRICT

HENDERSON, MN.

LIZ HOLUM JOHNSON

APRIL, 1987

MINNESOTA HISTORICAL SOCIETY,

AV DEPARTMENT,

690 CEDAR ST., ST. PAUL, MN. 55101

LOOKING SW

09239 #12

From the Collection of the  
**MINNESOTA HISTORICAL SOCIETY**

**DO NOT REPRODUCE  
WITHOUT WRITTEN PERMISSION**

**NOTICE**

This Material May Be  
Protected By Copyright  
(Law Title 17 U.S. Code)



HENDERSON COMMERCIAL HISTORIC DISTRICT  
Sibley County, Mn.  
# 09212 - 24

422 Main Street (2); 418 Main Street (1) Left to Right

09212#24

Henderson Commercial Historic District

Henderson, MN

Liz Holun Johnson

March, 1987

Minnesota Historical Society

A.V. Department

690 Cedar St., St Paul, MN 55101

Looking NE

From the Collection of the  
**MINNESOTA HISTORICAL SOCIETY**

**DO NOT REPRODUCE  
WITHOUT WRITTEN PERMISSION**

**NOTICE**

This Material May Be  
Protected By Copyright  
(Law Title 17 U.S. Code)

HENDERSON COMMERCIAL HISTORIC DISTRICT  
Sibley County, Md.  
# 09211-2



09211 #2

422 MAIN STREET (2)

Henderson COMMERCIAL HISTORIC DISTRICT  
Henderson, MN.

Liz Holman Johnson

MARCH, 1987

MINNESOTA HISTORICAL SOCIETY,

AV DEPARTMENT,

690 CEDAR STREET, ST. PAUL, MN. 55101

LOOKING NNW

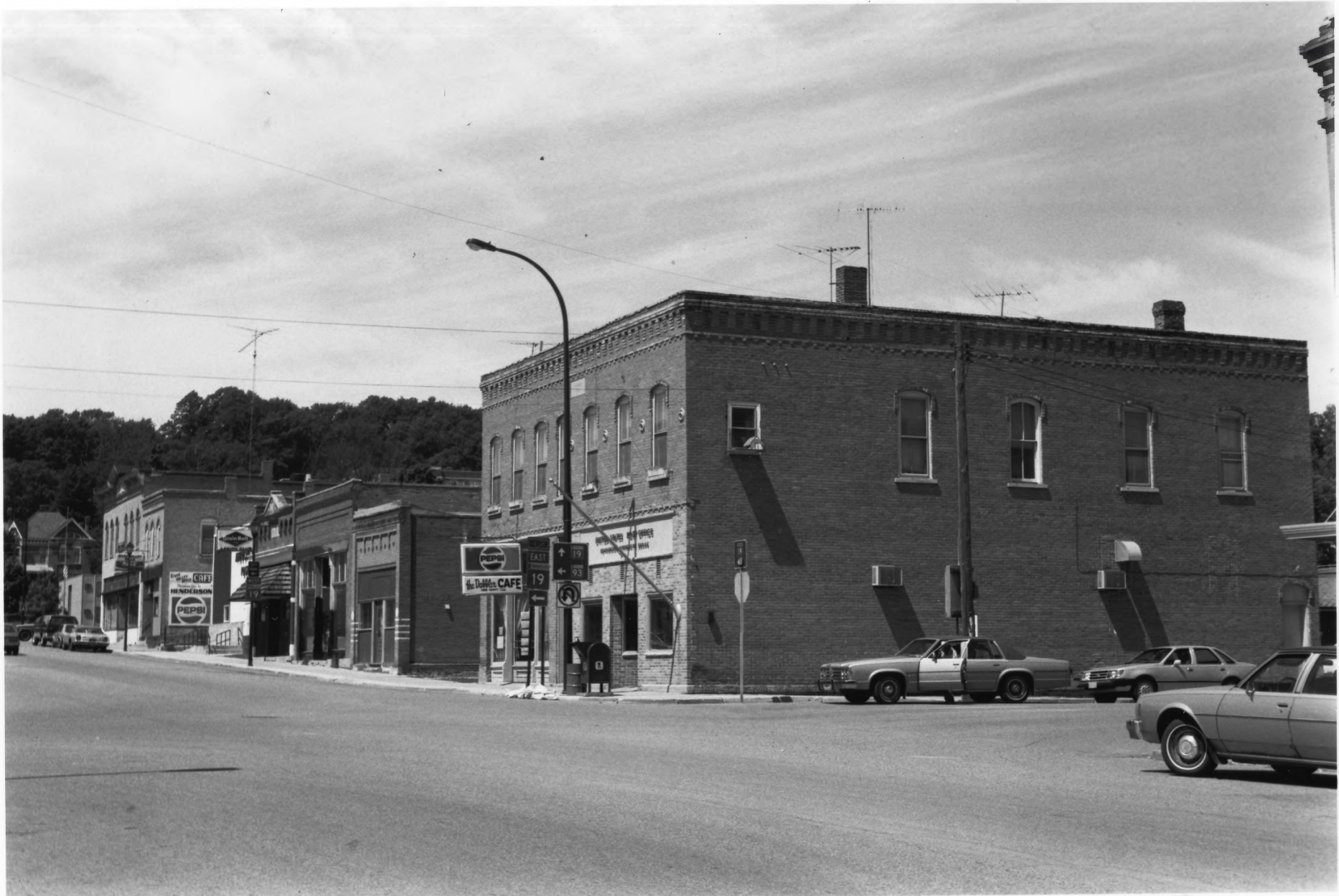
**NOTICE**  
This Material May Be  
Protected By Copyright  
(Law Title 17 U.S. Code)

From the Collection of the

**MINNESOTA HISTORICAL SOCIETY**

**DO NOT REPRODUCE  
WITHOUT WRITTEN PERMISSION**





Henderson Commercial Historic District  
Sibley County, MN.  
#09257-9

North side of Main Street; Left to Right Buildings No's. 9 through 3 09257#9

Henderson Commercial Historic District

Henderson, MN.

Liz Holum Johnson

MAY, 1987

MINNESOTA HISTORICAL SOCIETY,

AV DEPARTMENT,

690 CEDAR ST., ST. PAUL, MN: 55101

Looking NW

From the Collection of the  
**MINNESOTA HISTORICAL SOCIETY**

DO NOT REPRODUCE  
WITHOUT WRITTEN PERMISSION

**NOTICE**

This Material May Be  
Protected By Copyright  
(Law Title 17 U.S. Code)



Henderson Commercial Historic District  
Sibley County, MN.  
#09257-19

09257 #19

500-502 MAIN STREET (3)

HENDERSON COMMERCIAL HISTORIC DISTRICT

HENDERSON, MN.

LIZ HOLUM JOHNSON

MAY, 1987

MINNESOTA HISTORICAL SOCIETY

AV DEPARTMENT

690 CEDAR ST., ST. PAUL, MN. 55101

LOOKING N

From the Collection of the  
**MINNESOTA HISTORICAL SOCIETY**

DO NOT REPRODUCE  
WITHOUT WRITTEN PERMISSION

**NOTICE**

This Material May Be  
Protected By Copyright  
(Law Title 17 U.S. Code)



Henderson Commercial Historic District  
Sibley County, MD.  
# 09257-14

Left to Right:

514 MAIN STREET (6); 510 MAIN STREET (5) 506 MAIN STREET (4) 09257#14

Henderson. Commercial Historic District

Henderson, MN.

Liz Holum Johnson

MAY, 1987

MINNESOTA HISTORICAL SOCIETY,

AV DEPARTMENT,

690 CEDAR ST., ST. PAUL, MN. 55101

LOOKING NNE

From the Collection of the  
**MINNESOTA HISTORICAL SOCIETY**

DO NOT REPRODUCE  
WITHOUT WRITTEN PERMISSION

**NOTICE**

This Material May Be  
Protected By Copyright  
(Law Title 17 U.S. Code)



Henderson Commercial Historic District  
Sibley County, MN.  
# 09212-21

510 MAIN STREET (5); 506 MAIN STREET (4) Left to Right

Henderson Commercial Historic District

Henderson, MN.

Liz Holm Johnson

MARCH, 1987

MINNESOTA HISTORICAL SOCIETY

AV DEPARTMENT

690 CEDAR ST., ST. PAUL, MN. 55101

Looking NNW

09212 #21

From the Collection of the  
**MINNESOTA HISTORICAL SOCIETY**

DO NOT REPRODUCE  
WITHOUT WRITTEN PERMISSION

**NOTICE**

This Material May Be  
Protected By Copyright  
(Law Title 17 U.S. Code)





Henderson Commercial Historic District  
Sibley County, MN.  
# 09257-21

NORTH side of Main Street; Left to Right Building No's 9, 8, 7.

09257 #21

Henderson Commercial Historic District

Henderson, MN.

Liz Holum Johnson

MAY, 1987

MINNESOTA HISTORICAL SOCIETY,

AV Department,

690 CEDAR ST., ST. PAUL, MN. 55101

Looking NE

From the Collection of the  
**MINNESOTA HISTORICAL SOCIETY**

DO NOT REPRODUCE  
WITHOUT WRITTEN PERMISSION

**NOTICE**  
This Material May Be  
Protected By Copyright  
(Law Title 17 U.S. Code)



Henderson Commercial Historic District  
Sibley County, MD.  
#09257-23

Left to Right:  
522 MAIN STREET (8); 518 MAIN STREET (7) non-contributing  
Henderson COMMERCIAL HISTORIC DISTRICT  
Henderson, MN.

Liz Holam Johnson

MAY, 1987

MINNESOTA HISTORICAL SOCIETY,

A.V. DEPARTMENT,

690 CEDAR ST., ST. PAUL, MN. 55101

Looking NE

09257#23

From the Collection of the  
**MINNESOTA HISTORICAL SOCIETY**

**DO NOT REPRODUCE  
WITHOUT WRITTEN PERMISSION**

**NOTICE**

This Material May Be  
Protected By Copyright  
(Law Title 17 U.S. Code)



Henderson Commercial Historic District  
Sibley County, MN.  
#09257-15

526 Main Street (9); 522 Main Street (8); Left to Right

09257#15

Henderson Commercial Historic District

Henderson, MN.

Liz Holum Johnson

May, 1987

Minnesota Historical Society,

AV Department,

690 Cedar St., ST. PAUL, MN. 55101

Looking NW

From the Collection of the  
**MINNESOTA HISTORICAL SOCIETY**

DO NOT REPRODUCE  
WITHOUT WRITTEN PERMISSION

**NOTICE**

This Material May Be  
Protected By Copyright  
(Law Title 17 U.S. Code)



Henderson Commercial Historic District  
Sibley County, MN.  
#09257-22

09257 #21

526 MAIN ST. (9); 522 MAIN ST. (8); Left to Right

Henderson Commercial Historic District

Henderson, MN.

Liz Holm Johnson

MAY, 1987

MINNESOTA HISTORICAL SOCIETY.

AV DEPARTMENT,

690 CEDAR ST., ST. PAUL, MN. 55101

Looking NE

From the Collection of the  
**MINNESOTA HISTORICAL SOCIETY**

DO NOT REPRODUCE  
WITHOUT WRITTEN PERMISSION

**NOTICE**

This Material May Be  
Protected By Copyright.  
(Law Title 17 U.S. Code)





Henderson Commercial Historic District  
Sibley County, MN.  
# 09257-17

South side of Main St.; Left to Right Buildings No's. 10 through 13 09257#17

Henderson Commercial Historic District

Henderson, MN.

Liz Holm Johnson

May, 1987

Minnesota Historical Society,

AV Department,

690 Cedar St., ST. PAUL, MN. 55101

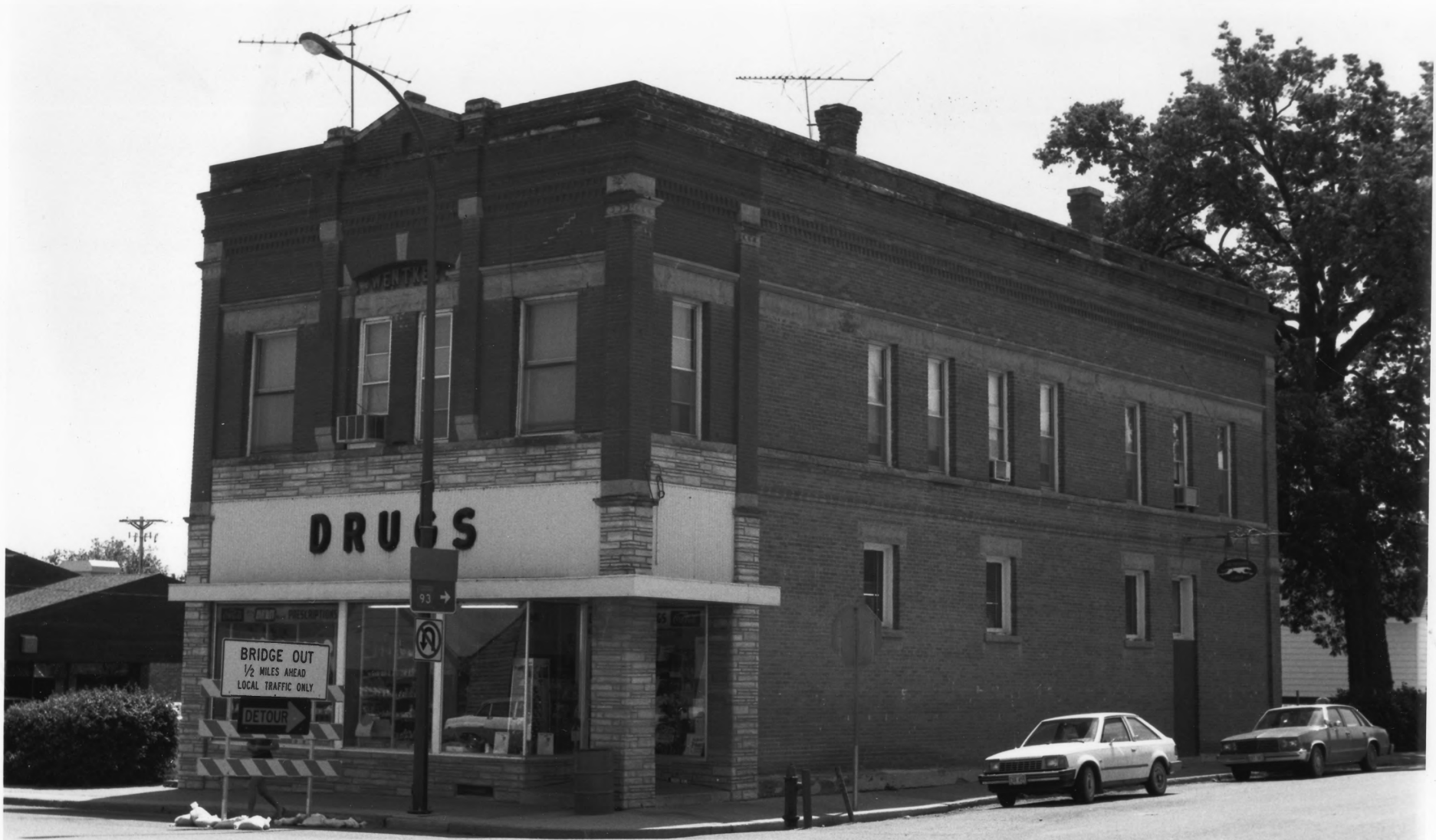
Looking SE

From the Collection of the  
**MINNESOTA HISTORICAL SOCIETY**

DO NOT REPRODUCE  
WITHOUT WRITTEN PERMISSION

**NOTICE**

This Material May Be  
Protected By Copyright  
(Law Title 17 U.S. Code)



Henderson Commercial Historic District  
Sibley County, MN.  
#09257-11

09257#11

417 Main ST. (10)

Henderson Commercial Historic District

Henderson, MN.

Liz Holum Johnson

MAY, 1987

Minnesota Historical Society,

AV Department,

640 Cedar St., ST. PAUL, MN. 55101

Looking SE

From the Collection of the  
**MINNESOTA HISTORICAL SOCIETY**

DO NOT REPRODUCE  
WITHOUT WRITTEN PERMISSION

**NOTICE**

This Material May Be  
Protected By Copyright  
(Law Title 17 U.S. Code)



Henderson Commercial Historic District  
Sibley County, MN.  
#09211-7

Left to Right:

501 MAIN STREET (11); 503-505 MAIN STREET (12); 507 MAIN STREET (13) 09211 # 7

Henderson Commercial Historic District

Henderson, MN.

Liz Holum Johnson

MARCH, 1987

MINNESOTA HISTORICAL SOCIETY,

AV DEPARTMENT,

690 CEDAR ST., ST. PAUL, MN 55101

Looking SW

From the Collection of the  
**MINNESOTA HISTORICAL SOCIETY**

DO NOT REPRODUCE  
WITHOUT WRITTEN PERMISSION

**NOTICE**

This Material May Be  
Protected By Copyright  
(Law Title 17 U.S. Code)