



Annapoe Brewery

Newnanee County, WI

Tim Heggland, photographer 8/93

State Historical Society of WI

View looking SW

03 441 0221+1-4 N-2 NN 2

lot 8



OPEN

AWARD WINNING WINERY
Guided Tours May-October
Wine Tasting Year Round
WINERY FOOD, TASTING
& WINE SALES
FUDGE
Fudgiana

Annex Brewery

Algona, Lawrence Co., WI

Tim Heggland, photographer 6/93

View looking NE

25 441 0221+1-4 N N NN 2

2 of 8



VON STEHL
WINERY

Annex Brewery

Algona, Howard Co., WI

Tim Heggland, Photographer 6/93

State Historical Society of WI

24 441 0221+1-4 N-1 NN 2

View North, NE

3 of 8

*Von Stiehl
winery*



Historical marker or plaque on the wall, containing text that is mostly illegible due to the image quality.



Akrope Brewery

Algona, Keokuk Co, WI

Tim Heggland, photographer 6/83

State Historical Society, WI

23 441 0221+1-4 N-1 NN 2

View loc., SSC

4 of 8



von Biehl
winery



THE VON BIEHL
WINERY
ESTABLISHED 1888

Algebra Brewery,

Algebra, Keweenaw Co, WI

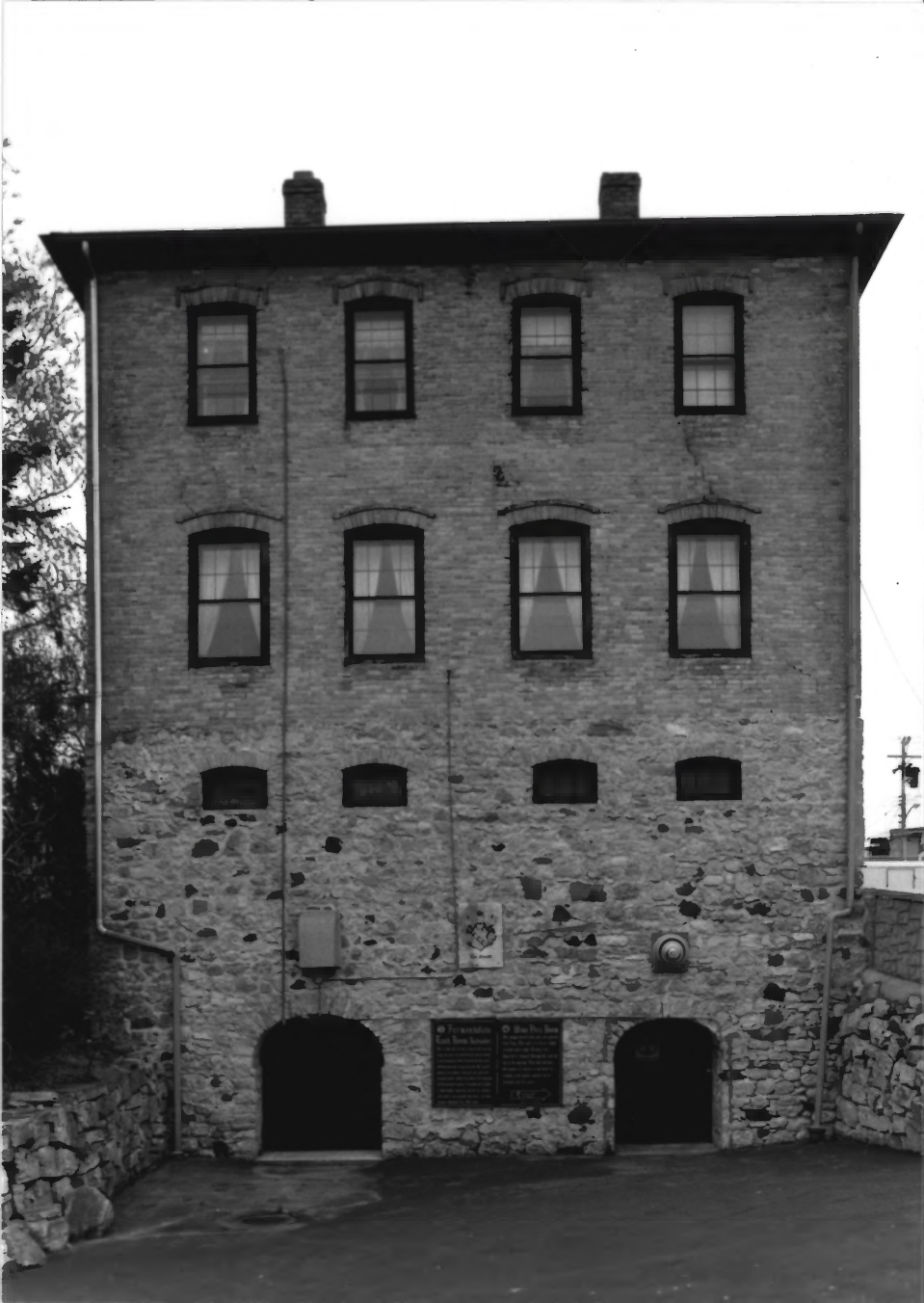
Tim Haggland, photographer, 6/93

State Historical Society, WI

22 441 0221+1-4 N-1 NN 2

View looking SSC=

5 of 8



1862
The building was constructed by the U.S. Army as a barracks for the 1st Cavalry Regiment. It was used as a barracks until 1865, when it was converted into a storehouse. The building was destroyed by fire in 1880 and was rebuilt in 1881. It was again destroyed by fire in 1900 and was rebuilt in 1901. The building was again destroyed by fire in 1910 and was rebuilt in 1911. The building was again destroyed by fire in 1920 and was rebuilt in 1921. The building was again destroyed by fire in 1930 and was rebuilt in 1931. The building was again destroyed by fire in 1940 and was rebuilt in 1941. The building was again destroyed by fire in 1950 and was rebuilt in 1951. The building was again destroyed by fire in 1960 and was rebuilt in 1961. The building was again destroyed by fire in 1970 and was rebuilt in 1971. The building was again destroyed by fire in 1980 and was rebuilt in 1981. The building was again destroyed by fire in 1990 and was rebuilt in 1991. The building was again destroyed by fire in 2000 and was rebuilt in 2001. The building was again destroyed by fire in 2010 and was rebuilt in 2011. The building was again destroyed by fire in 2020 and was rebuilt in 2021.



Annex Brouary

Algonia, Newhouse Co, WI

Tim Hegglund, photographer 8/93

State Historical Society of WI

21 441 0221+1-4 N-1 NN 2

View looking SW

0258



Annex Broun

Albany, Rensselaer Co, WI

Tim Heggler, photographer 6/93

State Historical Society of WI

16 441 0221+1-4 N+1 NN 2

View looking NW

705 9

1st floor T&E, solar



Lincoln Brewery,

Algona, Keosauqua Co, WI

Tim Heggslow, photographer 6/93

State Historical Society of WI

04 443 0221+1-4 N N NN 2

View 1001, NW

8 of 8

Schlosser, older