

United States Department of the Interior
National Park Service

National Register of Historic Places Registration Form

This form is for use in nominating or requesting determinations for individual properties and districts. See instructions in National Register Bulletin, *How to Complete the National Register of Historic Places Registration Form*. If any item does not apply to the property being documented, enter "N/A" for "not applicable." For functions, architectural classification, materials, and areas of significance, enter only categories and subcategories from the instructions.

RECEIVED 2280

JAN 22 2016

1. Name of Property

Historic name: Fort Snelling National Cemetery

Other names/site number: _____

Name of related multiple property listing:

Inter-World War National Cemeteries, 1934-1939

(Enter "N/A" if property is not part of a multiple property listing)

Nat. Register of Historic Places
National Park Service

2. Location

Street & number: 7601 34th Avenue South

City or town: Minneapolis State: Minnesota County: Hennepin

Not For Publication: Vicinity:

3. State/Federal Agency Certification

As the designated authority under the National Historic Preservation Act, as amended,

I hereby certify that this nomination ___ request for determination of eligibility meets the documentation standards for registering properties in the National Register of Historic Places and meets the procedural and professional requirements set forth in 36 CFR Part 60.

In my opinion, the property meets ___ does not meet the National Register Criteria. I recommend that this property be considered significant at the following level(s) of significance:

national ___ statewide ___ local

Applicable National Register Criteria:

A ___ B ___ C ___ D

<hr/>	
Signature of certifying official/Title: <u>Ralph Schaub</u>	Date <u>11/17/16</u>
State or Federal agency/bureau or Tribal Government	

In my opinion, the property <input checked="" type="checkbox"/> meets ___ does not meet the National Register criteria.	
Signature of commenting official: <u>Bruce Howard</u>	Date <u>November 17, 2015</u>
Deputy SHPO, MN Historical Society	
Title:	State or Federal agency/bureau or Tribal Government

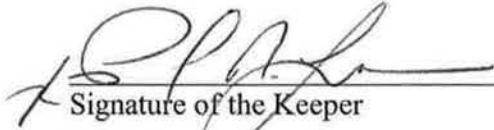
Fort Snelling National Cemetery
Name of Property

Hennepin, MN
County and State

4. National Park Service Certification

I hereby certify that this property is:

- entered in the National Register
- determined eligible for the National Register
- determined not eligible for the National Register
- removed from the National Register
- other (explain:)


Signature of the Keeper

3/9/2016
Date of Action

5. Classification

Ownership of Property

(Check as many boxes as apply.)

- Private:
- Public – Local
- Public – State
- Public – Federal

Category of Property

(Check only one box.)

- Building(s)
- District
- Site
- Structure
- Object

Number of Resources within Property

Fort Snelling National Cemetery
Name of Property

Hennepin, MN
County and State

(Do not include previously listed resources in the count)

Contributing	Noncontributing	
<u>4</u>	<u> </u>	buildings
<u> </u>	<u> </u>	sites
<u>14</u>	<u> </u>	structures
<u>71</u>	<u> </u>	objects
<u>89</u>	<u> </u>	Total

Number of contributing resources previously listed in the National Register

6. Function or Use

Historic Functions

(Enter categories from instructions.)

FUNERARY/Cemetery

LANDSCAPE

RECREATION AND CULTURE/monument/marker

Current Functions

(Enter categories from instructions.)

FUNERARY/Cemetery

LANDSCAPE

RECREATION AND CULTURE/monument/marker

Fort Snelling National Cemetery
Name of Property

Hennepin, MN
County and State

7. Description

Architectural Classification

(Enter categories from instructions.)

OTHER/Rationalist

Materials: (enter categories from instructions.)

Principal exterior materials of the property: Concrete, Kasota limestone, Granite, Marble,
Metal: cast aluminum and bronze

Narrative Description Summary Paragraph

Fort Snelling National Cemetery is slightly more than 436 acres at 7601 34th Avenue South in southern Minneapolis, immediately south of Minneapolis-St. Paul International Airport in Hennepin County. The setting is suburban/industrial in character, with most surrounding mid- to late-twentieth century buildings serving the nearby airport.

An Act of Congress of June 23, 1936 (49 Stat. 1888), as amended on May 24, 1937 (50 Stat. 200), established the cemetery. *General Orders No. 1*, United States War Department, named Fort Snelling National Cemetery in 1939. The first burial took place on July 5 of that year.¹

Since its establishment, Fort Snelling National Cemetery has undergone two major master plan processes. The first in 1974 resulted in a major reconfiguration of the main vehicular entrance and the construction of berms abutting the airport property. The master plan of 2005 most notably led to the adaptive reuse of existing buildings including the former Lodge and Pump House into the new Public Information Center, and the Utility Building into the new Administration Office, respectively.

There are approximately 436 acres in the cemetery, and about 342 acres are developed. As of May 2015 there were a total of 213,214 interments: 159,625 full casket burials, 48,696 in-ground cremations, and 4,893 cremations in the two columbaria. The remaining acreage extends to the north and east, beyond Nelson Drive and the burial sections along Kraus Avenue. The rolling hills of this area are marked by few roadways and storm water ponds.

¹ National Cemetery Administration (NCA), "National Cemetery Data," January 30, 1976. History Program Collection (HPC), NCA, Washington, DC.

Fort Snelling National Cemetery
Name of Property

Hennepin, MN
County and State

Narrative Description

The topography of Fort Snelling National Cemetery ranges from relatively flat in the original tract to somewhat steep in adjacent, later-developed sections. The symmetrically triangular layout of the western and historic sections of the cemetery reflects a formal, geometric pattern of roads and burial sections. In contrast, the eastern portion features stormwater ponds and spoil piles that provide several points of steep topography. The northernmost boundary of the cemetery features man-made berms, constructed as a buffer from noise pollution generated by the adjacent airport. Gently rolling hills characterize the remainder of the site, creating organic, winding roadways in later and future expansion areas.

There are seventy-three burial sections: A, B, B-1, C through F, F-1, F-2, G through P, P-1, Q, R, R-1, S through U, U-1, U-2, V through Y, 1, 2, 2A, 3, 4, 4A through 4C, 5, 6A through 6D, 7 through 9, 9A, 10 through 19, 20A, 20B, 21 through 33, and DSS (Distinguished Service Section). There are four memorial sections at the cemetery, MEM A through MEM D, which contain memorial markers.²

There are three major monument groups. One group encircles the flagpole along Wold Circle, one lines Mallon Road beginning at the United States Flagpole, and another is at the culmination of the Assembly Areas along Kraus Avenue.

Fort Snelling National Cemetery's headstones reflect the style prevalent in the era of establishment. The style of headstone is a major distinguishing characteristic of national cemeteries established in the twentieth century. The upright headstone appearance changed dramatically between the Spanish-American War and World War I. The predominant headstone at Fort Snelling is the upright white American marble cambered "General type" introduced in 1922 for World War I soldiers, and those after. This type of headstone measures 42" high, 13" wide, and 4" thick; approximately 26" is visible above ground. Inscriptions include the name, rank, regiment, division, date of birth, date of death, and home state. Originally, the emblem of belief on these headstones was limited to the Latin cross or Star of David centered above the name of the deceased. The number of available emblem of belief options began to increase after World War II.

In addition, some cemeteries permit flat, government-issued markers in specific sections, as seen in Section R of Fort Snelling National Cemetery for example.³ In the 1930s, the War Department introduced flat headstones to accommodate veterans buried in private/local cemeteries that did not allow upright markers, such as the lawn park and memorial park cemeteries. Congress already authorized markers of "durable stone" in 1873, thus, the Secretary of War only needed to approve a new style—flat. The first flat marble markers were produced in

² Memorial headstones are furnished for eligible deceased active duty service members and Veterans whose remains are not recovered or identified, are buried at sea, donated to science or whose cremated remains have been scattered.

³ See HALS No. MN-1-13; other images are held in the NCA History Office archival files.

Fort Snelling National Cemetery

Hennepin, MN

Name of Property

County and State

1936, with flat granite markers following two years later. They measure 24"x12" with rounded edges. The same products are used interchangeably as memorial markers.⁴

In lieu of government-issued headstones, some national cemeteries allowed privately provided grave markers in specific sections. There are approximately twenty more ornate, private headstones located within Section A, Block 25, which is part of the original triangular tract of Fort Snelling National Cemetery.

Contributing Properties Overview (89)⁵

Buildings (4): Public Information Center, Administration Office, Maintenance Facility/Restroom/Pump House, Maintenance Facility (modern).

Structures (14): Carillon Bell Tower, Fence along 34th Avenue South from the Entrance Gates to Gate No. 3, Funeral Cortège Postern Gate, Postern Gate No. 3, Wold Circle Entrance Gates and Fence, Labelle Drive Entrance Gates and 34th Avenue South fence addition, Columbarium Courtyards I and II, Post Road Chain-link Fence, Committal Shelters (6).

Objects (71): Fort Snelling National Cemetery Plaque, Veterans Administration Plaque, Flagpole Circle, *Memorial Day Order* Plaque, "Gettysburg Address" Plaque, "Bivouac of the Dead" Plaque, Avenue of Flags, Medal of Honor Memorial, Memorial Rifle Squad Memorial, World War I Memorial, 101st Airborne Division Memorial, 11th Airborne Division Memorial, 187th Airborne Regimental Combat Team Memorial, 173rd Airborne Brigade Memorial, 17th Airborne Division Memorial, 503rd Parachute Regimental Combat Team Memorial, 75th Ranger Regiment Memorial, 82nd Airborne Division Memorial, Korean War Rangers Memorial, United States Army Special Forces Memorial, 13th Airborne Division Memorial, Chaplain's Memorial, 187th Infantry Regiment Memorial, 1st Special Service Force Memorial, Glider Airborne of World War II Memorial, 160th Special Operations Aviation Regiment Memorial, 511th Parachute Infantry Regiment Memorial, Parachute Riggers Memorial, XVIII Airborne Corps Memorial, 506th Parachute Infantry Regiment Memorial, 509th Parachute Infantry Battalion Memorial, 1st Marine Division Memorial, Jewish War Veterans Memorial, 4th Marine Division Memorial, American Legion Memorial, 6th Marine Division Memorial, Four Marine Raider Battalions at Guadalcanal Memorial, 2nd Marine Division Memorial, Veterans of Foreign Wars Memorial Keep—Zimmer Post 1782 & Auxiliary, Chosin Few Memorial, Minnesota Marine Air Reserve Memorial, 9th Infantry Division Memorial, Wounded Veterans Memorial, Vietnam War Veterans Memorial, United States Submarine Veterans of World War II Memorial, Minnesota Korean War Veterans Memorial, Women Marines Memorial, United States Marine Corps, Minnesota Chapter 1, Mobile Riverine Force, Vietnam War Memorial, Minnesota Pearl Harbor Defenders Memorial, Disabled American Veterans Memorial, 3rd Marine Division Memorial, United States Merchant Marine and United States Navy Armed Guard, Viking Chapter Memorial, United

⁴ "Design for Flat Marker," Box 17, Folder 4, Fort Sam Houston National Cemetery. Department of Memorial Affairs (DMA), National Cemetery Historical File, Entry 25 (NCHF E25), Records of the Veterans Administration, Record Group 15 (RG 15), National Archives Building, Washington, DC (NAB).

⁵ Information in this section obtained from Maintenance Ledgers, various dates, Box 18, Folders 7-9, Fort Snelling National Cemetery (FSNC), DMA, NCHF, Records of the VA, RG 15, NAB.

Fort Snelling National Cemetery

Hennepin, MN

Name of Property

County and State

States Women's Army Corps Memorial, Navy Seabees and Civil Engineer Corps Memorial, 5th Marine Division Memorial, 8th Air Force Historical Society of Minnesota Memorial, World War II Memorial, Army Ranger Battalions of World War II Memorial, United States Army 1st Cavalry Division Memorial, Spanish-American War Memorial, 196th Light Infantry Brigade (Burning Rope) Memorial, United States Army 1st Infantry Division (Big Red One) Memorial, United States Army 3rd Infantry Division (Rock of the Marne) Memorial, 1st Logistical Command Memorial, National Sojourners Memorial, American Ex-Prisoners of War Memorial, Navy Women Memorial, United States Air Force, United States Air Force Reserve, Air National Guard Memorial, United States Army, United States Army Reserve, United States Army National Guard Memorial, United States Coast Guard, United States Coast Guard Reserve, U.S. Merchant Marine Memorial, United States Marines Memorial, United States Navy, United States Navy Reserve Memorial.

Contributing Properties Details: Buildings (4)

Public Information Center (former Lodge and Pump House): Approved for construction by the Secretary of War on July 18, 1938, the single-story former lodge is on the southeast periphery of Wold Circle, approximately 10' from the entrance gate. Completed September 7, 1939, the Stripped Classicism style building is representative of 20th-century Rationalist architecture emphasizing structural form and proportion over ornament, including a flat roof atop an asymmetrical northwest façade that features ten bays. The approximately 61'x31' main block was constructed with two extensions: a basement and a northeast wing. The basement measures approximately 11'x20' and the wing is 22'x21'. The building rests on a concrete foundation, and features exterior walls constructed of Kasota limestone and tile. The flat roof of the building is a lightweight, waterproof concrete with a Kasota limestone chimney at the northeast end of the main block.⁶ The windows are double four-light metal casements on the main block unless otherwise specified; all windows are recessed. The wing windows are filled-in with stone matching the exterior walls of the building. At the southwest corner of the main block's front façade, two wood-paneled doors with fixed four-light windows once served as the main entrances. One is outside the iron-picket fencing for access from outside the main gate; the other is just within the fencing for access while inside the cemetery grounds.

As part of the cemetery 2005 Master Plan, the cemetery adapted the building to serve as the administration office. Since 2005, ongoing improvements to the cemetery per the master plan included not only reuse of the lodge as an administration building, but also linking it to the nearby pump house. Workers completed the former pump house the same date as the lodge in 1939. Also constructed on a concrete foundation, the single-story, roughly 23'x14' building includes an underground reservoir. The building's exterior walls are Kasota limestone and tile, and the flat roof of the pump house is lightweight, waterproof concrete. The only fenestration was on the southwest façade.⁷

⁶ FSNC, "Historical Record, Fort Snelling National Cemetery," October 6, 1941, Historical File, FSNC, Minneapolis, MN.

⁷ FSNC, "Historical Record, Fort Snelling National Cemetery," October 6, 1941. See also HALS No. MN-1-39 and MN-1-41 for views of the pump house exterior in 2007.

Fort Snelling National Cemetery
Name of Property

Hennepin, MN
County and State

The construction of a sympathetic addition that includes a glass breezeway/lobby for visitors joined the lodge and pump house in 2008.⁸ The masonry-and-glass addition includes a stone exterior of almost matching color to its historic companions. The northeastern-most section of the addition includes ten large flat black masonry panels along its front façade, where gold letters stating the cemetery name and building use are attached. Just southwest of the panels is a cement walkway lined by low, masonry walls, which leads into the glass-walled lobby. The new main entrance to this building is a set of two glass doors, whose curved metal handles stand out against the glass background of the entry. The southwest façade of the building includes a double five-light metal casement window flanked by two single five-light metal casement windows.

The main block of the original lodge building includes five bays of double four-light metal casement windows on its southeast façade. Simple architrave trims and cornices frame the two end windows. Two bays lie along the southeast façade of the northeast wing. The bays contain two double three-light metal casement windows. A semicircular wall of glass panels with a simple metal cornice marks the lobby addition to the building. The masonry section linking the lobby with the original pump house includes another double three-light metal casement window alongside a four-light glazed single-paneled door. Air-conditioning and electrical boxes sit along the southeast façade of the pump house, hidden by a masonry wall measuring approximately 5' high, which marks the separation of the pump house and the newer masonry section. Both lodge and pump house, as well as the masonry addition and the overhang above the main entrance, include a simple 2' deep entablature below the roofline.

Administration Office (former Utility Building): Completed September 7, 1939, the cemetery rehabilitated the former utility building in accordance with the master plan of 2005. The one-story building located on the west edge of Wold Circle, approximately 10' from the entrance gate, now houses administrative offices. As with the former lodge, the Secretary of War approved the Stripped Classicism-style administration office for construction on July 18, 1938. It is a twin to the main block of the former lodge, approximately 61'x31', with a wing on the north elevation. There is no lower level associated with this building. It has a flat concrete roof, exterior walls of Kasota limestone and tile, and a concrete foundation.

Like the former lodge, the main block of this building includes five bays of double four-light recessed metal casement windows on the west façade. Simple architrave trims and cornices frame the two end windows. The south façade of the building includes one double five-light metal casement window is flanked by five-light single metal casement windows. All three windows are recessed.

The wing section of this building, formerly the garage of the utility building, now serves as an employee kitchen and meeting area. It is slightly larger than the former lodge wing at

⁸ John G. Knapp, cemetery director, electronic communication with Hillori Schenker, NCA Historian, December 10, 2014.

Fort Snelling National Cemetery

Hennepin, MN

Name of Property

County and State

approximately 22 ½'x25'. A small chimney adorns the northwest end of the main block. This building features a simple entablature identical to that on the former lodge building.⁹

Seven asymmetrically situated bays cover the east façade. The main block includes five symmetrical bays consisting of three sets of double doors; double 4-light recessed metal casement windows flank the trio of doors. The three east façade entrances are identical and include wood paneling and four-light glazed doors. Large Kasota limestone lintels top all three sets of doors. Between each set is a metal light fixture matching those originally found along the east façade of the former utility building. While in keeping with the historic character of the building, these doors are not original. The replacement door date to the changes called for in the 2005 master plan, and they are taller than the originals.

The wing of the former utility building features two large, metal, twenty-light fixed windows on its east façade. These windows were part of the recent rehabilitation and mimic the appearance of the two garage doors originally located here. The north façade of the wing includes a single side-entry door and a single window. This window is identical to those on the front façade, while the door mimics the doors on the front façade. This door also replaces a shorter previous door and its transom.

Maintenance Facility/Restroom/Pump House No. 2: Located adjacent to Gate No. 3 and Section L on the west perimeter of the cemetery, the 1957 maintenance facility/restroom consists of a large, single-story, L-shaped building, a corrugated-metal storage building, and a second pump house.¹⁰ The southwest corner of the building holds a public restroom; however, the remainder of the facility is not for public use. The building has a concrete foundation, walls are stucco and painted white, and it has a flat roof. A tall stucco chimney sits atop the juncture of the north wing and the office section of the east wing.

The north wing of the building includes five large vehicular bays. Two of these are original to the building's construction and three are later expansions. The two bays at the south corner are original to the building; the remaining three bays are slightly wider than the originals and each includes a modern metal garage door.¹¹ An entrance bay is at the juncture of the two wings. It has a modern metal shop door.

The east wing features five vehicular bays. A space in the exterior stucco wall that separates the westernmost automobile bay from the next bay is filled in. The following bay consists of a metal shop door set in a filled-in former automobile bay. Both this bay and the filled exterior wall are original to the building. A maintenance office, and an entrance to it, is near the juncture of the north and east wings; it includes metal doors and metal fixed windows under a slightly shorter flat roof.

⁹ FSNC, "Historical Record, Fort Snelling National Cemetery," October 6, 1941.

¹⁰ Photographs, December 1957, Office of Construction Management Records, NCA, Washington, DC.

¹¹ There were three bays originally. The third opening is a fill-in space just south of the original two.

Fort Snelling National Cemetery

Hennepin, MN

Name of Property

County and State

At the northeast corner of the paved maintenance yard and storage area is a second pump house, "Pump House 2," measuring approximately 50'x25'. Constructed of large concrete blocks, the pump house has a slightly gabled metal roof. Just south of the pump house is an approximately 15'x25' metal storage building. All exterior walls, as well as the flat roof of this storage shed, are corrugated metal.

A vinyl-covered, chain-link fence lines the north perimeter of the maintenance facility area in an asymmetrical pointed form, linking the northwest corner of the north wing with the west wall of the pump house.

Maintenance Facility (modern): Completed between 2005 and 2007, the facility includes a large multi-purpose building and a building composed of a string of vehicular bays. The facility sits at the eastern perimeter of Fort Snelling National Cemetery. Its construction is primarily painted concrete block with a standing-seam metal gable roof. Metal exterior walls cover gable ends; while the smaller vehicular bay building has a painted stucco exterior. Three gablets (small ornamental gables) give visual interest to the rear (east) façade of the large building; while a shed entrance and office area attaches to the building's west façade near its southwest corner to accommodate the Memorial Rifle Squad.

Historic Integrity

The historic integrity of the buildings at Fort Snelling National Cemetery is high. Overall, the buildings retain integrity in the areas of location, design, setting, materials, workmanship, feeling, and association. The buildings have not been moved, and remain in their original locations. Though some original design elements have been altered to bring use changes to some buildings, the historic design intent of the buildings remains legible. The setting of the buildings, the greater cemetery itself and the suburban and industrial surrounds, has evolved over time. As the cemetery and community expanded, minor changes in building setting occurred, but with sympathetic alterations, these changes did not diminish historic integrity. The historic materials used to construct the cemetery's buildings remain present wherever possible. Sympathetic replacement materials have been used when needed. Use of original materials, combined with sympathetic replacement materials and sensitive alterations and additions, further supports the historic integrity of the buildings in the area of workmanship. The feeling of Fort Snelling National Cemetery's buildings as important historic resources supporting a nationally significant historic burial ground remains, as does the association of the buildings with the national cemetery movement during the Inter-World War years and thereafter.

Structures (14)

Carillon Bell Tower: The cemetery installed the carillon near the northwest corner of Section V in 1961. Near the intersection of Klanska Drive and Kraus Avenue, the approximately 20' high metal, multi-bell, carillon played not only the United States national anthem, but also the anthems of other countries as applicable.¹² In November 1984, a large boulder marked the front

¹² "Fort Snelling National Cemetery," no date, HPC, NCA, Washington, DC.

Fort Snelling National Cemetery

Hennepin, MN

Name of Property

County and State

of the carillon tower to memorialize its donation twenty years prior. The boulder's face holds a rectangular bronze plaque.

Fence along 34th Avenue South from the Entrance Gates to Gate No. 3: The Secretary of War approved construction of this section of fence, adjacent to the 34th Avenue gates, on July 18, 1938. Completed October 12, 1939, workers constructed the foundation of the 3,328' long in concrete. Originally built of steel, intermittent rubble-stone posts with Kasota limestone caps divided the fence.¹³

After the construction of the new maintenance building in 1957, the fence along 34th Avenue South extended to the northwest corner of Section L, then along Post Road to the juncture of Sections L and U. As part of the 2005 Master Plan process, cemetery laborers relocated and/or replaced some of the fencing along this part of 34th Avenue South.

Funeral Cortège Gate (former Gate No. 1): Workers completed the Funeral Cortège Gate on 34th Avenue on October 12, 1939. It has rubble-stone posts with caps of Kasota limestone, with Kasota quoins on the larger posts. The tall posts flanking the roadways at Peck and Kraus Avenues stand approximately 12' tall by 4½' square. Each post includes an 8½' post wing measuring 16" wide by 2' deep. These wings connect the main posts to two flanking pedestrian entrances. Each terminates in an 8½' fence post that measures 3' wide by 2' deep. Since its original construction, the cemetery replaced the steel fencing. Iron picket fencing measuring 6½' replaced original fencing between the rubble posts.

A central post separating entrancing and exiting vehicular traffic now divides the funeral cortège gate. Constructed in 2008 of both new and reused materials. Sympathetic to the Kasota limestone form and color, this roughly 10' tall post supports swinging iron gates on its south and north sides.

Gate No. 3 (former Gate No. 2): Laborers completed Gate No. 3 on 34th Avenue gates on October 12, 1939. This gate has rubble-stone posts with caps and quoins of Kasota limestone. The tall posts flanking the roadways at Peck and Kraus Avenues stand approximately 12' tall by 4½' square. Each post includes an 8½' tall post wing measuring 16" wide by 2' deep. These wings connect the main posts to two flanking pedestrian entrances. Each terminates in an 8½' fence post that measures 3' wide by 2' deep.

Iron picket fencing measuring 6½' replaces original steel fencing between the rubble posts; fixed iron picket fencing to the north and a short chain-link fence to the south replaces pedestrian entrances. A chain-link, swing-and-latch gate also replaces the vehicular entrance. During the 2005 Master Plan process, the cemetery slightly relocated this gate.

Wold Circle Entrance Gates and Fence: The main entrance gates separate the southwestern-most visitors' parking lot and Wold Circle. Approved by the Secretary of War on July 18, 1938,

¹³ "Fort Snelling National Cemetery," no date.

Fort Snelling National Cemetery

Hennepin, MN

Name of Property

County and State

laborers completed the gates and fence at the main entrance on August 2, 1939.¹⁴ Spanning 165' atop a concrete foundation, the iron fence joins the Administration Office with the main gates and the Public Information Center, physically connecting all four. Spaced equally within the fence between the Administration Office and west gate, and the Public Information Center and east gate are four Kasota limestone posts measuring approximately 8½' tall.

The two gates, spanning a length of 77', stand 21' tall and reflect the Stripped Classicism style of the surrounding architecture.¹⁵ Both Kasota limestone gates form simple squared-post arches and flank pedestrian egress. They include wrought-iron swing-and-latch gates that close to public entry at dusk. Fluted pilasters adorn the four corners of each gate, and two ribbons of engraved Greek Key adorn each arch. The underside of each arch holds electric lights.

Centered between the west and east gates is a single post of Kasota limestone. This post separates the former vehicular wrought-iron swing-and-latch egress. These gates now remain closed at all times. A strip of grass and sidewalk on both north and south sides lines the entire span of the fence and gates. Atop the 8½' tall post is a lantern with five sides of frosted glass set in a decorative wrought-iron pattern. A small wrought-iron eagle sits at the peak of the lantern's pointed copper top. An inscription of an eagle and the words "U.S. National Cemetery" are on the south side of the post.

Labelle Drive Entrance Gates and 34th Avenue South fence addition: This gate and fence, added as part of the 1974 Phase 1 Master Plan for the cemetery, features masonry posts at the Labelle Drive entrance. These masonry posts, flanked by wrought-iron fencing, intermittently mark the 34th Avenue South fence addition. Wrought-iron fencing originally placed along Labelle Drive was removed as part of this master plan. Some of the wrought-iron fencing is extant and stored behind the maintenance facility (modern). Masonry posts and wrought-iron fencing were reused where possible. The new fencing matched former wrought-iron fencing and new posts completed in limestone with Kasota limestone caps received a sympathetic but clearly different material and design.

Columbaria Courtyards: The cemetery added the columbaria after the 2005 Master Plan update. The plan describes the columbaria courts as "created by laying out a series of double loaded niche banks, four niches high by 12 niches long, for a total of 96 niches per bank."¹⁶ Niches measuring 10½"x15"by 20" deep with marble covers are provided in banks. Columbaria Courtyards I and II sit across from one another on Pruden Drive, while Columbaria Courtyard III is along the northeast edge of Section 11.

Post Road Chain-link Fence: The fence along Post Road at the northernmost border of the cemetery serves as a barrier between the adjacent airport facilities and the land occupied by Fort Snelling National Cemetery. The roughly 6' chain-link fence is a standard design and appears to have been added when the berms were constructed, after the 1974 Phase 1 Master Plan.

¹⁴ "Fort Snelling National Cemetery," no date.

¹⁵ "Fort Snelling National Cemetery," no date.

¹⁶ Landmark Engineering Ltd/Dahlgren, Shardlow, and Uban, Inc., "Fort Snelling National Cemetery, Master Plan 5," April 12, 2005, 3, Historical File, FSNC, Minneapolis, MN.

Fort Snelling National Cemetery
Name of Property

Hennepin, MN
County and State

Committal Shelters 1, 4, and 5: Committal shelters 1, 4, and 5 are identical in size and form.¹⁷ All three are small, open-air with no exterior walls, measuring about 7' on all four sides. Each has an asphalt-shingle hipped roof that sits atop four wood posts. These three shelters sit atop a concrete foundation measuring approximately 33'x45' to accommodate funeral attendees. Shelter 1 features a slightly curved foundation, slightly different in size from shelters 4 and 5. Lining two sides of the foundations of these committal shelters are roughly 5' tall white vinyl picket fences. Shelter 5, at the southeast corner of Nelson and Klanska Drives, features this fencing along its northeast and southeast perimeter. Set near the northwest corner of Labelle Drive and Kraus Avenue, Shelter 4's fence lines its northwest and northeast perimeter; Shelter 1's fence lines its northeast and northwest perimeter, angled at to the northwest, at its place at the juncture of West Outer and John Page drives.

Committal Shelters 2, 3, and 6: The remaining three committal shelters are identical in size and form. Shelters 2 and 3 are on the sites of previous committal shelters, replaced according to a master plan in 2005, but Shelter 6 is at a new location among the columbaria. Masonry walls with stone veneer compose the four large piers that support the heavy timber roof framing of these shelters. Tongue-and-groove wood planks line the roof interior, while a metal, hipped roof sits atop the framing system. Permanent metal benches sit atop the 20'x20' concrete pad under each shelter. Shelter 2 is at the southeast corner of Section 5; Shelter 6 sits within the new Columbarium Courtyard II, on the north side of Pruden Drive, across from Columbarium Courtyard I.

Historic Integrity

The historic integrity of the structures at Fort Snelling National Cemetery is high. Overall, the structures retain integrity in the areas of location, design, setting, materials, workmanship, feeling, and association. While some structures have been slightly relocated, most have not been moved, and remain in their original locations. Though some original design elements of the structures have been replaced, the historic design intent remains intact. The setting of the structures, the greater cemetery itself and the suburban and industrial surrounds, has evolved over time. As the cemetery and community expanded, minor changes in setting occurred, but with sympathetic alterations, these changes have not diminished the historic integrity of structures at Fort Snelling National Cemetery. Historic and original materials used to construct the cemetery's structures remain present wherever possible. Sympathetic replacement materials have been used when needed. Use of original materials, combined with sympathetic replacement materials and sensitive alterations and additions, further supports the historic integrity of the structures in the area of workmanship. The feeling of Fort Snelling National Cemetery's structures as important historic resources supporting a nationally significant historic burial

¹⁷ According to the master plan compiled in 2005, the cemetery replaced Committal Shelter 1 with a wood structure; Committal Shelters 4 and 5 were slated for replacement in the new plan. This slight delay in construction likely accounts for the similar form of all three shelters and the difference in foundation for the first to be built. The previous iteration of shelters date to the 1985-2003 era and, at the time, were non-contributing elements in the cemetery landscape Landmark Engineering Ltd/Dahlgren, Shardlow, and Uban, Inc., ; MP1 Existing Conditions Executive Summary – Amended MP5, 3.

Fort Snelling National Cemetery

Hennepin, MN

Name of Property

County and State

ground remains, as does the association of the structures with the national cemetery movement during the Inter-World War years and thereafter.

Objects (71)

Fort Snelling National Cemetery Plaque: Affixed to the north gatepost at the Labelle Drive Entrance Gates is a ca. 1939 rectangular bronze plaque that displays the name of the cemetery.

Veterans Administration Plaque: Affixed to the south gatepost at the Labelle Drive Entrance Gates, a ca. 1973 rectangular bronze plaque reads “Veterans Administration 1930.” These words encircle a bas-relief carving of an officer’s crest.

Flagpole Circle: On October 18, 1940, workers completed the United States Flagpole and base.¹⁸ The flagpole and base is concrete, granite, Kasota limestone, and steel. The Disabled American Veterans lent a temporary 75’ flagpole to Fort Snelling National Cemetery for the dedication ceremony held on July 14, 1939. Cemetery laborers installed the permanent and extant flagpole on June 10, 1940.¹⁹ A concrete walkway encircles the flagpole, which sits upon a concrete foundation. The walkway encircles four short sets of stairs arranged in a cruciform shape. While the steps facing northwest and southeast measure approximately 8’ wide, the steps facing northeast and southwest are about 12’ wide. Each set includes four steps. A void between each set of steps includes brown landscaping stones and rectangular electric spotlights. A low wall lines the steps and the small circular walkway at the flagpole base. The steps, wall, and smaller walkway are granite. From the walkway, the flagpole base is stepped three times. The last step up is slightly angled toward the flagpole base and includes a line of Greek key ornament carved into the granite.

Set atop the granite steps is a Kasota limestone and cast-metal base for the United States Flagpole. Lombard & Ludwig, Inc., architectural sculptors based in Washington, DC, designed the decorative flagpole base.²⁰ Ornamental carvings include a low-relief depiction of grain, fluted pilasters topped by Stripped Classicism-style eagles, and triple five-pointed stars. The cast-metal sleeve of the base also includes a Greek key relief, ribbed collar, and acanthus leaf decoration. The flagpole itself stands approximately 75’ tall.²¹ At the top of the pole is a gold metal finial comprised of an eagle in flight atop a round ball.

Memorial Day Order Plaque: The *Memorial Day Order* plaque, installed ca. 1945, is one of two bronze plaques attached to upright granite stands at Fort Snelling National Cemetery. The

¹⁸ John R. Holt, Lt. Col., Quartermaster Corps (QMC), to Quartermaster General, Washington, DC, January 7, 1941, Box 580, Folder 624, Fort Snelling National Cemetery (FSNC) 1938 ep, General Correspondence “Geographical File” (GCGF) 1936-1945, Records of the Office of the Quartermaster General (OQMG), Record Group 92 (RG 92), National Archives at College Park, MD (NACP).

¹⁹ FSNC, “Historical Record, Fort Snelling National Cemetery,” October 6, 1941.

²⁰ Lombard & Ludwig, Inc., Photographs, July 29, 1940 and August 5, 1940, Box 582, Folder 655, FSNC, 1937, GCGF 1936-45, RG 92, NACP.

²¹ FSNC, “Historical Record, Fort Snelling National Cemetery,” October 6, 1941.

Fort Snelling National Cemetery
Name of Property

Hennepin, MN
County and State

plaque is 4½' long by 2½' wide, set upon a 6½' high upright stand. The plaque is in Section B, just northwest of Wold Circle.

“Gettysburg Address” Plaque: The “Gettysburg Address” Plaque, installed approximately 1945, is one of two bronze plaques attached to upright granite stands at Fort Snelling National Cemetery. The plaque is approximately 4½' tall by 2½' wide set upon a 6½' high upright stand. It is in Section B-1 just northeast of Wold Circle.

“Bivouac of the Dead” Plaque: This cast-aluminum plaque features a quatrain from the poem “Bivouac of the Dead” by Theodore O’Hara. The plaque is currently in storage pending reinstallation.

Avenue of Flags: Behind the rows of memorials flanking Mallon Road is an Avenue of Flags, used for special events such as Memorial Day and Veterans Day. These flagpoles are not in use on a daily basis. Each roughly 15' tall pole sits approximately 12' apart from one another.

Kraus Avenue Circles Memorial Group

This memorial group contains twenty-four memorials located at the culmination of the Assembly Areas along Kraus Avenue.

Medal of Honor Memorial (Kraus Avenue Circles): Granite block with polished top and rough-hewn sides with bronze plaque affixed to top, erected November 11, 1999.

Memorial Rifle Squad Memorial (Kraus Avenue Circles): Granite boulder with circular, polished front; four bronze plaques affixed to surface, erected September 23, 2000.

World War I Memorial (Kraus Avenue Circles): Polished granite block with bronze plaque affixed to top, erected 2001.

101st Airborne Division Memorial (Kraus Avenue Circles): Polished granite block with bronze plaque affixed to top, erected 2002.

11th Airborne Division Memorial (Kraus Avenue Circles): Polished granite block with bronze plaque affixed to top, erected 2002.

187th Airborne Regimental Combat Team Memorial (Kraus Avenue Circles): Polished granite block with bronze plaque affixed to top, erected 2002.

173rd Airborne Brigade Memorial (Kraus Avenue Circles): Polished granite block with bronze plaque affixed to top, erected 2002.

17th Airborne Division Memorial (Kraus Avenue Circles): Polished granite block with bronze plaque affixed to top, erected 2002.

Fort Snelling National Cemetery

Hennepin, MN

Name of Property

County and State

503rd Parachute Regimental Combat Team Memorial (Kraus Avenue Circles): Polished granite block with bronze plaque affixed to top, erected 2002.

75th Ranger Regiment Memorial (Kraus Avenue Circles): Polished granite block with bronze plaque affixed to top, erected 2002.

82nd Airborne Division Memorial (Kraus Avenue Circles): Polished granite block with bronze plaque affixed to top, erected 2002.

Korean War Rangers Memorial (Kraus Avenue Circles): Polished granite block with bronze plaque affixed to top, erected 2002.

United States Army Special Forces Memorial (Kraus Avenue Circles): Polished granite block with bronze plaque affixed to top, erected 2002.

13th Airborne Division Memorial (Kraus Avenue Circles): Polished granite block with bronze plaque affixed to top, erected 2003.

Chaplain's Memorial (Kraus Avenue Circles): Upright granite slab engraved on front and back, erected 2004.

187th Infantry Regiment Memorial (Kraus Avenue Circles): Polished granite block with bronze plaque affixed to top, erected 2004.

1st Special Service Force Memorial (Kraus Avenue Circles): Polished granite block with bronze plaque affixed to top, erected 2004.

Glider Airborne of World War II Memorial (Kraus Avenue Circles): Polished granite block with bronze plaque affixed to top, erected 2004.

160th Special Operations Aviation Regiment Memorial (Kraus Avenue Circles): Polished granite block with bronze plaque affixed to top, erected 2005.

511th Parachute Infantry Regiment Memorial (Kraus Avenue Circles): Polished granite block with bronze plaque affixed to top, erected 2005.

Parachute Riggers Memorial (Kraus Avenue Circles): Polished granite block with bronze plaque affixed to top, erected August 13, 2005.

XVIII Airborne Corps Memorial (Kraus Avenue Circles): Polished granite block with bronze plaque affixed to top, erected 2006.

506th Parachute Infantry Regiment Memorial (Kraus Avenue Circles): Polished granite block with bronze plaque affixed to top, erected 2006.

Fort Snelling National Cemetery

Name of Property

Hennepin, MN

County and State

509th Parachute Infantry Battalion Memorial (Kraus Avenue Circles): Polished granite block with bronze plaque affixed to top, erected 2006.

Mallon Road Memorial Group

This memorial group lines Mallon Road, beginning at the United States Flagpole, and contains thirty-four memorials.

1st Marine Division Memorial (Mallon Road): Granite block with polished top and rough-hewn sides with bronze plaque affixed to top, erected 1995.

Jewish War Veterans Memorial (Mallon Road): Granite block with polished top and rough-hewn sides with bronze plaque affixed to top, erected 1996.

4th Marine Division Memorial (Mallon Road): Granite block with polished top and rough-hewn sides with bronze plaque affixed to top, dedicated by Chapter 28, North-Central, 1996.

American Legion Memorial (Mallon Road): Polished granite block with bronze plaque affixed to top and bronze medallion affixed to front face, erected 1997.

6th Marine Division Memorial (Mallon Road): Granite block with polished top and rough-hewn sides with bronze plaque affixed to top, dedicated May 26, 1997.

Four Marine Raider Battalions at Guadalcanal Memorial (Mallon Road): Granite block with polished top and rough-hewn sides with bronze plaque affixed to top, dedicated May 26, 1997.

2nd Marine Division Memorial (Mallon Road): Granite block with polished top and rough-hewn sides with bronze plaque affixed to top, dedicated 1997 by Minnesota Chapter.

Veterans of Foreign Wars Memorial Keep - Zimmer Post 1782 & Auxiliary (Mallon Road): Granite block with polished top and rough-hewn sides with bronze plaque affixed to top, dedicated July 4, 1997.

Chosin Few Memorial (Mallon Road): Granite block with polished top and rough-hewn sides with bronze plaque affixed to top, dedicated May 17, 1998.

Minnesota Marine Air Reserve Memorial (Mallon Road): Granite block with polished top and rough-hewn sides with bronze plaque affixed to top, dedicated November 10, 1998.

9th Infantry Division Memorial (Mallon Road): Granite block with polished top and rough-hewn sides with bronze plaque affixed to top, erected 1998.

Wounded Veterans Memorial (Mallon Road): Polished granite block with bronze plaque affixed to top and bronze Purple Heart medal affixed to front face, erected 1999.

Fort Snelling National Cemetery
Name of Property

Hennepin, MN
County and State

Vietnam War Veterans Memorial (Mallon Road): Granite block with polished top and rough-hewn sides with bronze plaque affixed to top, erected 1999.

United States Submarine Veterans of World War II Memorial (Mallon Road): Granite block with polished top and rough-hewn sides with bronze plaque affixed to top, erected 1999.

Minnesota Korean War Veterans Memorial (Mallon Road): Polished granite block with bronze plaque affixed to top, erected November 11, 1999.

Women Marines Memorial, United States Marine Corps, Minnesota Chapter 1 (Mallon Road): Granite block with polished top and rough-hewn sides with bronze plaque affixed to top, erected November 11, 1999.

Mobile Riverine Force, Vietnam War Memorial (Mallon Road): Granite block with polished top and rough-hewn sides with bronze plaque affixed to top, erected 2000.

Minnesota Pearl Harbor Defenders Memorial (Mallon Road): Granite block with polished top and rough-hewn sides, bronze plaque affixed to top and bronze medallion affixed to front face, erected 2000.

Disabled American Veterans Memorial (Mallon Road): Polished granite block with bronze plaque affixed to top and bronze medallion affixed to front face, erected 2000.

3rd Marine Division Memorial (Mallon Road): Granite block with polished top and rough-hewn sides with bronze plaque affixed to top, erected 2000.

United States Merchant Marine and United States Navy Armed Guard, Viking Chapter Memorial (Mallon Road): Polished granite block with bronze plaque affixed to top, dedicated November 11, 2000.

United States Women's Army Corps Memorial (Mallon Road): Granite block with polished top and rough-hewn sides with bronze plaque affixed to top, dedicated November 11, 2000.

Navy Seabees and Civil Engineer Corps Memorial (Mallon Road): Polished granite block with bronze plaque affixed to top, dedicated July 2003.

5th Marine Division Memorial (Mallon Road): Granite block with polished top and rough-hewn sides with bronze plaque affixed to top, erected 2001.

8th Air Force Historical Society of Minnesota Memorial (Mallon Road): Granite block with polished top and rough-hewn sides with bronze plaque affixed to top, erected 2002.

World War II Memorial (Mallon Road): Granite block with polished top and rough-hewn sides with bronze plaque affixed to top, erected 2002.

Fort Snelling National Cemetery
Name of Property

Hennepin, MN
County and State

Army Ranger Battalions of World War II Memorial (Mallon Road): Polished granite block with bronze plaque on top surface, dedicated August 2003.

United States Army 1st Cavalry Division Memorial (Mallon Road): Granite block with polished top and rough-hewn sides with bronze plaque affixed to top, erected 2003.

Spanish-American War Memorial (Mallon Road): Granite block with polished top and rough-hewn sides with bronze plaque affixed to top, dedicated June 24, 2004.

196th Light Infantry Brigade (Burning Rope) Memorial (Mallon Road): Granite block with polished top and rough-hewn sides with bronze plaque affixed to top, erected 2004.

United States Army 1st Infantry Division (Big Red One) Memorial (Mallon Road): Granite block with polished top and rough-hewn sides with bronze plaque affixed to top, erected 2004.

United States Army 3rd Infantry Division (Rock of the Marne) Memorial (Mallon Road): Granite block with polished top and rough-hewn sides with bronze plaque affixed to top, erected 2005.

1st Logistical Command Memorial (Mallon Road): Granite block with polished top and rough-hewn sides with bronze plaque affixed to top, erected 2006.

National Sojourners Memorial (Mallon Road): Granite block with polished top and rough-hewn sides with bronze plaque affixed to top, erected 2006.

Wold Circle Memorial Group

This memorial group encircles the flagpole and contains seven memorials.

American Ex-Prisoners of War Memorial (Wold Circle): Polished granite block with bronze plaque affixed to top, dedicated April 9, 1991.

Navy Women Memorial (Wold Circle): Granite block with polished top and rough-hewn sides with bronze plaque affixed to top, dedicated July 30, 1994.

United States Air Force, United States Air Force Reserve, Air National Guard Memorial (Wold Circle): Granite block with polished top and rough-hewn sides with bronze plaque affixed to top, dedicated May 29, 1995.

United States Army, United States Army Reserve, United States Army National Guard Memorial (Wold Circle): Granite block with polished top and rough-hewn sides with bronze plaque affixed to top, dedicated May 29, 1995.

Fort Snelling National Cemetery
Name of Property

Hennepin, MN
County and State

United States Coast Guard, United States Coast Guard Reserve, U.S, Merchant Marine Memorial (Wold Circle): Granite block with polished top and rough-hewn sides with bronze plaque affixed to top, dedicated May 29, 1995.

United States Marines Memorial (Wold Circle): Granite block with polished top and rough-hewn sides with bronze plaque affixed to top, dedicated May 29, 1995.

United States Navy, United States Navy Reserve Memorial (Wold Circle): Granite block with polished top and rough-hewn sides with bronze plaque affixed to top, dedicated May 29, 1995.

Historic Integrity

The historic integrity of the objects at Fort Snelling National Cemetery is high. Overall, the objects retain integrity in the areas of location, design, setting, materials, workmanship, feeling, and association. The objects have not been moved, and remain in their original locations. The historic and original design of the objects remains intact. The setting of the objects, the greater cemetery itself and the suburban and industrial surrounds, has evolved over time. As the cemetery and community expanded, minor changes in the setting occurred, but with sympathetic alterations and sensitive growth, these changes have not diminished the historic integrity of objects at Fort Snelling National Cemetery. Historic and original materials used to construct the cemetery's objects remain intact and replacement materials are not evident. The preservation of historic and original materials composing objects at the cemetery further supports the historic integrity in the area of workmanship. The feeling of Fort Snelling National Cemetery's objects as important resources supporting a nationally significant historic burial ground remains intact, as does the association of the objects with the national cemetery movement during the Inter-World War years and thereafter.

Conclusion

Despite its changes, Fort Snelling National Cemetery retains its historic integrity. Overall, boundary increases and the addition of new buildings, structures, and monuments do not diminish the association, feeling, or design intent of the cemetery's earliest planned sections. Some such additions, such as the berm and sensitively designed fences gates, support the cemetery's integrity of setting. Workmanship and feeling remain evident through sensitive building and structural alterations.

Fort Snelling National Cemetery
Name of Property

Hennepin, MN
County and State

8. Statement of Significance

Applicable National Register Criteria

(Mark "x" in one or more boxes for the criteria qualifying the property for National Register listing.)

- A. Property is associated with events that have made a significant contribution to the broad patterns of our history.
- B. Property is associated with the lives of persons significant in our past.
- C. Property embodies the distinctive characteristics of a type, period, or method of construction or represents the work of a master, or possesses high artistic values, or represents a significant and distinguishable entity whose components lack individual distinction.
- D. Property has yielded, or is likely to yield, information important in prehistory or history.

Criteria Considerations

(Mark "x" in all the boxes that apply.)

- A. Owned by a religious institution or used for religious purposes
- B. Removed from its original location
- C. A birthplace or grave
- D. A cemetery
- E. A reconstructed building, object, or structure
- F. A commemorative property
- G. Less than 50 years old or achieving significance within the past 50 years

Fort Snelling National Cemetery
Name of Property

Hennepin, MN
County and State

Areas of Significance

(Enter categories from instructions.)

MILITARY

SOCIAL HISTORY

Period of Significance

1937-Present

Significant Dates

1939

1973

2005

Significant Person

(Complete only if Criterion B is marked above.)

Cultural Affiliation

Architect/Builder

War Department

Works Progress Administration

Statement of Significance Summary Paragraph

Fort Snelling National Cemetery
Name of Property

Hennepin, MN
County and State

Fort Snelling National Cemetery's significance rests in its position as one of seven national cemeteries established between World War I and World War II, specifically in the years 1934-1939. The increased veteran population, combined with the rapidly depleting burial space at existing national cemeteries, led to a series of federal legislation during this period aimed at establishing new cemeteries: Baltimore, Fort Snelling, Fort Rosecrans, Golden Gate, Fort Bliss, Long Island, and Fort Sam Houston national cemeteries. These seven properties are nationally significant under Criterion A for their association with the expansion of the National Cemetery System during the Inter-World War period. These cemeteries are physical shrines illustrating selfless sacrifices of the U.S. military, which expand upon the burial and memorial mission established during the Civil War through the first national cemeteries.

In 2011, the Keeper of the National Register confirmed National Register of Historic Places eligibility by issuing a clarification of policy stating that all national cemeteries are considered exceptionally significant and eligible for listing in the NRHP regardless of age, and that all buildings, structures, and objects located within the boundaries of national cemeteries are considered contributing elements to each national cemetery regardless of age.²²

The period of significance (1937-Present) at Fort Snelling National Cemetery begins with its establishment by Congress as a national cemetery. General Orders of the War Department named the national cemetery in 1939 and the first interment soon followed. Due to the complex nature of cemetery development, Congressional establishment was chosen as the beginning date for the Inter-World War national cemeteries because all other dates occur due to the enabling legislation. This nomination is part of a National Register of Historic Places Multiple Property Submission for Inter-World War National Cemeteries, 1934-1939.

Narrative Statement of Significance

Historical Background

The history of Fort Snelling National Cemetery interconnects with the history of the fort itself. In 1805, the federal government established a frontier post at the junction of the Minnesota and Mississippi rivers near modern-day Minneapolis, Minnesota, but did not establish a permanent fort until 1820. Soldiers of the 5th United States Infantry built the garrison, designated as Fort St. Anthony, under the command of Colonel Josiah Snelling. Four years later, an official inspection by Brigadier General Winfield Scott was so successful that he reported to the War Department that the installation be named Fort Snelling, a "just compliment to the meritorious officer under whom it has been erected."²³

The fort served as a permanent frontier post for nearly a quarter century, but in 1855, the government demoted the post to a supply depot. During 1861 and 1865, Minnesota expanded

²² Keeper of the National Register, "National Register Eligibility of National Cemeteries—A Clarification of Policy." September 8, 2011. (Washington, DC: History Program Collection, NCA). Available at: http://www.cem.va.gov/pdf/Final_Eligibility_of_VA_cemeteries_A_Clarification_of_Policy_rev.pdf

²³ Marcus Lee Hansen *Old Fort Snelling, 1819-1858* (Iowa City, IA: State Historical Society of Iowa, 1918), 21, 29.

Fort Snelling National Cemetery

Hennepin, MN

Name of Property

County and State

the fort as a training center for thousands of volunteers who joined the Union Army.²⁴

Minnesota Governor Alexander Ramsey was the first state executive to offer state troops to President Lincoln for the support of the Union. After the war, the regular Army returned to Fort Snelling, the headquarters and supply base for the Military Department of Dakota, which extended from the Mississippi River to the Rocky Mountains. Regulars from Fort Snelling served in the Indian campaigns and in the Spanish-American War of 1898. Training continued there during World War I, but in 1947 the government permanently deactivated the post thereby ending more than a century of service.²⁵

The fort maintained a small Post Cemetery for soldiers who died while in service there as well as for their dependents. Civil War soldiers, veterans of the Indian Wars, African Americans in the 25th United States Infantry Regiment posted at the fort in the 1880s, known as Buffalo Soldiers, and two Native Americans of the Blackfoot Nation who served in Company I (an all-American Indian company) in the 1890s, were interred in the Post Cemetery.²⁶ The earliest burial at the post dated to 1826. Although the Post Cemetery accommodated soldiers from the fort, the large veteran population in and around Minneapolis and St. Paul did not have an available national cemetery nearby.

Establishment of National Cemetery

The St. Paul-Minneapolis area had a particularly large and active veteran population after World War I, predominantly due to the existence of Fort Snelling. These veterans were vocal lobbyists for patriotic causes and benefits for former soldiers. On April 15, 1920, the passage of Public Law 66-175, Ch. 140 extended burial benefits to honorably discharged veterans of all wars. This dramatically increased the demand for interment space in national cemeteries. In the succeeding years, a number of veterans groups in the St. Paul-Minneapolis area petitioned Congress to establish a national cemetery in their community, and even formed an organization, the National Cemetery Committee (NCC), to pursue the matter. This committee consisted of representatives of the Grand Army of the Republic (GAR), Spanish-American War Veterans, Veterans of Foreign Wars, Disabled American Veterans, Jewish War Veterans and the American Legion. The mission of the organization was to lobby “for a national cemetery in the northwest...in memory of the dead” and as “a shrine for the living.” Dr. John E. Soper, a World War I veteran who became interested in attaining a new national cemetery in 1935 when he learned there was no adequate federal burial ground located within the central northwest region of the United States, chaired the Minneapolis-based NCC. He and the committee succeeded in their petition. In 1936, the United States Congress passed Public Law No. 763 authorizing the establishment of

²⁴ “Military History at Fort Snelling,” Historic Fort Snelling, accessed October 1, 2014, <http://www.historicfortsnelling.org/history/military-history>.

²⁵ Disabled American Veterans (DAV), “Fort Snelling National Cemetery Informational Brochure,” pamphlet (Minneapolis, MN: DAV Minneapolis Chapter #1, ca. 1992).

²⁶ Stephen Chicoine, *Our Hallowed Ground: World War II Veterans of Fort Snelling National Cemetery*, (Minneapolis, MN: University of Minneapolis Press, 2005), xvii, xviii.

Fort Snelling National Cemetery

Hennepin, MN

Name of Property

County and State

a new national cemetery, and, in 1937, authorized the War Department to legally allocate 180 acres of land at the Fort Snelling Military Reservation for this purpose.²⁷

The NCC's success is especially significant in view of the fact that its victory marked a distinct departure from War Department policy in the 1930s. The department's policy was to expand existing national cemeteries rather than create new ones, and in the case of other Inter-World War national cemeteries, they were either intended to supplement and expand existing facilities or to serve current burial needs of the armed forces. The new cemetery at Fort Snelling was the only Inter-World War national cemetery whose location was "dictated entirely by an intent to accommodate the veteran population of a large metropolitan area."²⁸ Fort Snelling National Cemetery marked a point of departure in cemetery policy for the War Department, which ultimately divorced the system from its original purpose by "transforming the burial privilege accorded veterans to a recognized right of demanding equal convenience in enjoyment of the privilege." The War Department (renamed the Department of Defense in 1949) and Congress subsequently included location and concentration of veteran populations in discussions of establishing new national cemeteries.²⁹

The land for the new cemetery lay in the southwest corner of the Fort Snelling Military Reservation. Surrounded by the Wold-Chamberlain Air Field on the north, farmland and a few houses on the west, and the fort and the Mississippi River valley to the south and east, the parcel was triangular with its apex pointing south. When the first allotment of Works Progress Administration (WPA) funds became available in summer 1937, workers broke ground on the new cemetery. The New Deal labor program, begun in 1935, primarily completed small-scale new construction, rehabilitation, and/or landscape improvement projects that could be completed in a year or less. WPA laborers worked on the grading, filling and landscaping of the grounds while the construction of the buildings and main entrance was hired out under contract.³⁰

Development of Fort Snelling National Cemetery

The Construction Division of the Office of the Quartermaster General's Office in Washington, DC, prepared the cemetery plans in collaboration with the Chief of the Memorial Branch, of the same office. The original landscape design remains visible in the oldest sections of the national cemetery. An early pamphlet produced by the NCC in 1937 or 1938 illustrates the plan. Though an unusual triangular form, the tract shape encouraged the development of a geometric, classical design similar to that in other national cemeteries established in the 1930s. The design had a

²⁷ DAV, "Informational Brochure," ca. 1992; "Dr. Soper Honored at Banquet," *The All-Veterans' News*, April 1938; "U.S. National Cemetery," *The All-Veterans' News*, December 1938; The land survey records of the NCA show that only 113 acres were transferred in 1939, NCA, "Land Survey Inventory of Federal Acreage," Quarterly Report: 1st Qtr./FY 03," December 31, 2002, updated April 7, 2009, HPC, NCA, Washington, DC; *Amending the Act of June 23, 1936, Authorizing the Secretary of War to Set Apart as a National Cemetery Certain Lands of the Fort Snelling Military Reservation, Minn.*, 75th Cong., 1st sess., May 12, 1937.

²⁸ Edward Steere, "Shrines of the Honored Dead: A Study of the National Cemetery System" (A series of six articles written by Steere, an OQMG historian), *Quartermaster Review* (1953-54), 29.

²⁹ Steere, "Shrines," 29.

³⁰ Maj. John R. Holt, Introductory Remarks, July 14, 1939, Folder 687 FSNC, MN, Vol V, July to Dec. 1939, GCGF 1936-45, Records of the OQMG; RG 92, NACP.

Fort Snelling National Cemetery

Hennepin, MN

Name of Property

County and State

prominent central drive anchored by a flagpole near the gated entry; allées of trees were to line the roads, and rectangular and square burial sections; trees along the perimeter were to create a screen, a depiction that eventually took the form of a fence and treeline. The proposed plan gave a nearly central place of honor to a chapel adjoined to an amphitheater, surrounded by a double row of trees that extended south along the main central drive, the location of the Distinguished Service Section. Plans showed the lodge and administration office near the front entrance, just as they stand today. The shrubbery lining the central road (Mallory Drive) had an intricate geometric pattern that the cemetery established by late 1948.³¹

The original allotment for building the cemetery was \$75,000 for WPA projects, an amount exhausted by December 1937. The February 1938 edition of *The All-Veterans' News*, a monthly publication of the Minnesota Veterans of Foreign Wars, announced an additional \$50,000 appropriation for the Fort Snelling National Cemetery. The money “allowed a good many men” to be put back to work on January 3, 1938. The publication went on to announce that the NCC requested an additional \$250,000 from Congress for purchase of materials. Approval of this funding would open many more jobs for WPA work, and assure the retention of the 180 acres allotted for the cemetery. The NCC hoped to ensure the development utilized the full 180 acres because they planned to erect a 5,000-seat amphitheater and a 400-seat chapel at the site. By May 1938, 600 men were working in groups of 300 at the cemetery according to committee chairman Soper. Other estimates put the number at around 200 men total. Although Congress did not approve the additional \$250,000 allotment, Soper felt sure that the cemetery would be the “Second Arlington of the Northwest” and one of the most beautiful cemeteries in the central northwest. The State of Minnesota also gave the cemetery money at the initial construction and \$38,000 for development of the second part of the cemetery by 1946, proving their continued support for the endeavor.³²

The first priority, funded by the initial \$75,000 WPA allotment, was to clear the first phase of development, 40 of the 180 acres. Workers then contoured the ground, trenched ditches, and installed the piping for the water and sewer system.³³ The NCC was especially vigilant in requesting more WPA funding; in June 1938, it went before the State Executive Council of Minnesota to request financing to continue work on the cemetery. The state granted \$15,000 to sponsor WPA work in the cemetery during October 1940. Concurrent to its appeals for state support, the committee sought to use \$150,000 approved by Congress to fund WPA labor to construct the cemetery buildings instead of hiring a contractor. Despite this suggestion, the Quartermaster General pointed out that construction might be achieved “more speedily” if

³¹ Holt, Introductory Remarks, July 14, 1939; National Cemetery Committee, “U.S. National Cemetery, Fort Snelling, Minn.,” pamphlet, Fort Snelling Research Materials (FSRM), Minnesota Historical Society (MHS), St. Paul, MN.

³² “National Cemetery,” *The All-Veterans' News*, February 1938; “Work on National Cemetery Progressing,” *The All-Veterans' News*, March 1938; “National Cemetery,” *All Veterans' News*, November 1938; “U.S. National Cemetery,” *The All-Veterans' News*, December 1938; *The All Veterans' News*, August 1938; “National Cemetery Progressing,” *The All-Veterans' News*, May 1939; John Soper, Chmn., FSNC Committee, to Col. Ira K. Evans, QMC, Washington, DC, February 15, 1946, Folder 687 FSNC 1945, GCGF 1936-45, Records of the OQMG, RG 92, NACP.

³³ “U.S. National Cemetery,” *The All-Veterans' News*, December 1938.

Fort Snelling National Cemetery

Hennepin, MN

Name of Property

County and State

advertised and contracted out. The work was hired out, and by the opening of the cemetery in summer 1939, expenses for construction of the cemetery totaled approximately \$500,000.³⁴

The first major construction phase at the cemetery developed about 40 acres and completed many of the building projects designed for the cemetery. As of September 1939, contractor National Builders, Inc. of Minneapolis completed the superintendent's lodge, utility building, pump house, and much of the fence and side entrance gates. At a total cost of \$79,116, the project came in just \$1,200 above the budgeted amount. The main entry gates cost \$27,887 to complete a month earlier. The company Meierjohan—Metalcrafts—Wengler, Inc. of Cincinnati, Ohio furnished the large pylon lamp at the center of the gates. It was not until October 1940 that Hagstrom Construction Company completed the flagpole and base at a cost of \$14,131. The company used the same Kasota limestone found on the nearby buildings and entry, as well as pink granite to complete the flagpole and base.³⁵ The cemetery installed two standard bronze plaques, "Gettysburg Address" Plaque and *Memorial Day Order* Plaque, ca. 1945. Such plaques are common installations to national cemeteries. However, this style of plaque, set upon an upright granite stand, may be specific to Inter-World War cemeteries.³⁶

The design of the main entrance and buildings is Stripped Classicism. Creating a formidable entry, light-colored Kasota limestone and tile compose this grouping. These buildings frame a monumental entryway with two large pedestrian entry gates flanking a central post with a large wrought-iron lantern topped by an iron eagle. An iron fence and smaller posts connect the gates to the nearby buildings. The harmonious use of materials and the design of the gateway and buildings inside them create a dramatic and unified entry into the national cemetery.

Fort Snelling National Cemetery's first superintendent was Harvey A. Olson; on July 5, 1939, the first interment was made under his direction.³⁷ The deceased was United States Army Captain George H. Mallon, a Medal of Honor recipient for heroism during the Meuse-Argonne drive of September 1918. His actions resulted in the capture of 100 prisoners, eleven machine

³⁴ J.W. Kirk, Works Projects Section, Minnesota, to Quartermaster General, Washington, DC, October 16, 1940, Folder 687, Fort Snelling Improvements Vol. VI, Beginning Jan. 1940, GCGF 1936-45, Records of the OQMG, RG 92, NACP; John Soper, Chmn., FSNC Committee, to Maj. Gen. Henry Gibbins, Quartermaster General, June 30, 1938, Folder 687 FSNC 1938 Vol. III, GCGF 1936-45, Records of the OQMG, RG 92, NACP; Maj. Gen. Henry Gibbins, Quartermaster General, to Chmn. John Soper, FSNC Committee, July 13, 1938, Folder 687 FSNC 1938 Vol. III, GCGF 1936-45, Records of the OQMG, RG 92, NACP; Holt, Introductory Remarks, July 14, 1939.

³⁵ FSNC, "Historical Record, Fort Snelling National Cemetery," October 6, 1941; Maj. J. Moultrie Ward, QMC, to Constructing Quartermaster, Fort Snelling, MN, October 7, 1938, Folder 687, FSNC 1938 Vol. III, GCGF 1936-1945, Records of the OQMG, RG 92, NACP; W.N. Mackay, Vice President, Meierjohan – Metalcrafts – Wengler, Inc., to Chief Clerk, War Department, Washington, DC, October 11, 1938, Folder 687, FSNC 1938 Vol. III, GCGF 1936-45, Records of the OQMG, RG 92, NACP; Maj. Homer W. Jones, to Constructing Quartermaster, Fort Snelling, MN, July 30, 1940, Folder 655, FSNC 1937, GCGF 1936-45, Records of the OQMG, RG 92, NACP.

³⁶ This style of plaque is currently found in Baltimore, Fort Sam Houston, Long Island, Fort Rosecrans, and Fort Snelling national cemeteries. The manufacturer sent this style of plaque to Fort Bliss National Cemetery, and perhaps to Golden Gate National Cemetery, but they were subsequently removed. Golden Gate and Fort Bliss national cemeteries now have similar plaques dating to 2011 and 2012, respectively.

³⁷ Maj. Everett C. Williams, (FA) IGD, Asst. Corps Area Inspector General, to Commanding Gen., 7th Corps Area, Omaha, Nebraska, October 27, 1939, Box 580, Folder 331.1 Fort Snelling, MN, NC 1939, GCGF 1936-45, Records of the OQMG, RG 92, NACP.

Fort Snelling National Cemetery

Hennepin, MN

Name of Property

County and State

guns, four 155-millimeter howitzers, and one anti-aircraft gun. Captain Mallon died in 1934 and was originally interred in a private cemetery. He was reinterred in Section B DS 1-2. Less than ten days later, on July 14, 1939, the cemetery hosted a formal dedication. Soon after, 680 remains from the Old Fort Snelling Post Cemetery of soldiers who served from 1820-1939 were reburied in Section A, Block 23. Of this number, 282 are unknowns.³⁸

Just a month earlier, John T. Harris, a colonel with the Quartermaster Corps and project manager for the national cemetery, warned the Fort Snelling Quartermaster against possible rivalry between veteran organizations at the dedication. He understood that this rivalry existed in Minneapolis, and wanted to ensure that there was no fighting between the organizations, since each would want to appear as the “big guys” in the assembly. Colonel Harris said that it was particularly true during the establishment of Long Island National Cemetery. Despite his fears, the formal dedication ceremony was a well-orchestrated and well-attended event.

Approximately 6,000 attendees witnessed the parade of veteran groups and the 3rd Infantry regiment, along with the flyover of United States Naval Reserve planes, while listening to *Taps* and *The Star Spangled Banner*. Addresses by the governor of Minnesota and the commanding general of Fort Snelling followed an invocation. The dedication program listed all of the veteran groups, congressmen, and senators invited to attend the ceremony. Major Melvin J. Maas, also a United States Congressman, made a particularly interesting speech that several newspapers published afterward. While paying homage to the cemetery, he suggested that a path to peace between the United States and other nations depended on the nations minding their own business in regard to the United States. The *All-Veterans News* applauded the ceremony for having “no long-winded speeches or a long tiresome parade.”³⁹

Second Phase of Development

The cemetery entered a second phase of development in summer 1941 after receiving \$12,500 from the State Legislature Advisory Committee. WPA laborers worked on the project. However, with the advent of World War II, a shortage of materials by 1942 and lack of state funding halted construction for a time.⁴⁰ As late as 1946, the NCC still hoped to have the amphitheater and chapel added to the cemetery per the original plans, but they were not; no proposed drawings for either project have been found.

³⁸ DAV, “Informational Brochure,” ca. 1992; Chicoine, *Our Hallowed Ground*, xix; FSNC Historical File – “Background,” HPC, NCA, Washington, DC.

³⁹ “Program, Dedication Exercises Held at Fort Snelling National Cemetery,” pamphlet, July 14, 1939, Historical File, FSNC, Minneapolis, MN; “U.S. Cemetery Site Dedicated,” *The Minneapolis Tribune*, July 15, 1939; “National Cemetery Dedication, 6,000 Attend,” *The All-Veterans’ News*, August 1939; Col. John T. Harris, QMC, to Maj. John R. Holt, Quartermaster, Fort Snelling, MN, June 17, 1939, Folder 687, FSNC, MN Vol. V, July to Dec. 1939, GCGF 1936-45, Records of the OQMG, RG 92, NACP.

⁴⁰ “Fort Snelling National Cemetery,” *The All-Veterans’ News*, August 1941; Holt to Quartermaster General, January 7, 1941; John Soper, Chmn., FSNC Committee, to Maj. Gen E.B. Gregory, Quartermaster General, October 10, 1942, Folder 687 FSNC 1940a, GCGF 1936-45, Records of the OQMG, RG 92, NACP.

Fort Snelling National Cemetery

Hennepin, MN

Name of Property

County and State

By 1948, the cemetery developed northward, up to Kraus Avenue, with burials nearly filling up the southwest quadrant. Workers planted shrubs along Mallon Avenue in the early 1940s, and trees in the 1950s. Near the perimeter and along Peck Avenue were other planted trees by the 1950s. In 1957, the cemetery added an L-shaped masonry maintenance building along the west border, north of Kraus Avenue. In 1960, the cemetery tract increased by 146 acres, and in 1961, the Department of the Air Force transferred approximately 177 acres to the cemetery. This brought the total acreage of the cemetery to roughly 436. In 1961, the NCC presented a carillon bell tower to Fort Snelling National Cemetery. By 1968, the cemetery's roads and some landscaping extended from the avenue to the north border, and this area began receiving interments.⁴¹ The cemetery developed approximately 137 acres for burials by the end of 1972.⁴²

Demand caused by three large-scale wars, World War II, Korea, and Vietnam, led to cemetery expansion during the mid-twentieth century. Each conflict inducted a new generation into battle and created new masses of veterans.

Late Twentieth-Century Development

Fort Snelling National Cemetery experienced a number of changes in the last quarter of the twentieth century and continues to evolve today following a 2005 master plan.

Passage of the *National Cemetery Act of 1973* (Public Law 93-43), signed on June 18, 1973, provided for further development of the National Cemetery System. The act transferred eighty-two of the eighty-four national cemeteries to the Veterans Administration (VA). The two exceptions were among the oldest and most recognized properties: Soldiers' Home and Arlington national cemeteries. The eighty-two cemeteries joined twenty-one that the VA already administered as part of VA medical centers. Also transferred from the Army were thirty-three soldiers' lots, government lots, and Confederate cemeteries dating to the Civil War.⁴³ During the 1980s and 1990s, the VA evolved. In 1989, the VA gained cabinet-level status and was renamed the Department of Veterans Affairs (also known by the abbreviation VA); in 1998 the National Cemetery System became the National Cemetery Administration (NCA).

Also in 1973, consulting company Brauer & Associates prepared a master plan for the cemetery; they submitted final plans in January 1974. The United States Army Corps of Engineers hired the company because of concerns that the cemetery would reach its capacity in the 1970s and because it lacked any long-range plans. One of the most important recommendations contained in the master plan was to buffer the cemetery from the noise and visual pollution of the airport

⁴¹ Historic photographs, HPC, NCA, Washington, DC; John Soper, Chmn., FSNC Committee, to Col. Ira K. Evans, QMC, November 15, 1946, Folder 687 FSNC 1945, GCGF 1936-45, Records of the OQMG, RG 92, NACP; NCA, "Land Survey," December 31, 2002, updated April 7, 2009.; DAV, "Informational Brochure," ca. 1992.

⁴² Gerald Weland, *Last Post* (Bowie, MD: Heritage Books, Inc., 1990), 112.

⁴³ Dean W. Holt, *American Military Cemeteries: A Comprehensive Illustrated Guide to the Hollowed Grounds of the United States, Including Cemeteries Overseas* (Jefferson, NC: McFarland and Company, 1992), 5, 409; Donald E. Johnson, *A Study of the National Cemetery System* (Washington, DC: Department of Veterans Affairs [VA], 1974), 15; VA, *Report on the National Cemetery System*, prepared in response to Public Law 99-576 (Sec. 412), Veterans Benefit Improvement and Health-Care Authorization Act of 1986 (February 1994).

Fort Snelling National Cemetery

Hennepin, MN

Name of Property

County and State

and the highway along the northern border through earth berms and tree planting.⁴⁴

Subsequently, the cemetery added an approximately 12' earth berm in 1977. The southeast part of the cemetery also developed, following the master plan recommendation for a road pattern composed of soft curves and straight lines. This new road system avoided the sharp, symmetry and geometry of the older section, and continues to be the guiding document behind new road and burial section design. Visually, the new areas are a marked contrast to the older sections of the cemetery.⁴⁵

In June 1979, the Fort Snelling Memorial Rifle Squad performed their first volunteer service. Though they started with only a few members, as of June 2009 they serve at burials five days a week with squads of ten to twelve men per day. Dressed in authorized ceremonial uniforms and veterans organization caps, members include riflemen and buglers, the latter who play *Taps*. The squad prides itself on being the first of its kind in the NCA and provides a valuable function for the interment ceremonies at the cemetery.⁴⁶

Between 1991 and 2006, veterans groups placed a significant number of memorials within the cemetery, in three principal locations: 1) In Wold Circle around the flagpole (1991-1995), 2) along Mallon Avenue (1995-2006), and 3) along Kraus Avenue (1999-2006).

A master plan submitted in April 2005 generated a new phase of renovations and construction at the Fort Snelling National Cemetery. At the time, just 139 acres of the approximately 436-acre cemetery had been developed, and so the plan sought to make the most use of available space, with few roads and with the addition of columbaria and committal shelters. The landscape changed slightly when a recent director had the lower limbs of the trees removed in the last few years. This opened up long-range vistas of the cemetery and provided continuity to an organic landscape.⁴⁷

Medal of Honor Recipients (8)⁴⁸

The Medal of Honor is the highest award that can be bestowed upon Armed Services personnel. The honor recognizes an act of valor performed in action against an enemy force. The headstones of the recipients installed or replaced since 1976 feature the Medal of Honor emblem in gold. Headstones prior to 1976 may list the medal in text only.

Richard E. Fleming, Captain. Captain Fleming (World War II), Marine Scout-Bombing Squadron 241, United States Marine Corps Reserve, distinguished himself on June 4-5, 1942.

⁴⁴ Brauer & Associates, Inc., *Fort Snelling National Cemetery Master Plan, Phase 1* (Minneapolis, MN: Brauer & Associates, Inc., 1974).

⁴⁵ Dennis A. Gimmestad, MHS, State Historic Preservation Office, to David Starkie, HPC, NCA, Washington, DC, August 15, 2005, FSRM, MHS, St. Paul, MN.

⁴⁶ DAV, "Informational Brochure," ca. 1992.

⁴⁷ Landmark Engineering Ltd./Dahlgren, Shardlow, and Uban, Inc., 1, 3; Arthur Smith, cemetery director, conversation with author, October 7, 2008.

⁴⁸ This section was compiled with information from George Lang, Raymond Luther Collins, and Gerard White, *Medal of Honor Recipients, 1863-1994: World War II to Somalia*, New York: Facts on File, Inc., 1995 and the Congressional Medal of Honor Society, "Full Archive," accessed June 1, 2010, www.CMOHS.org.

Fort Snelling National Cemetery

Hennepin, MN

Name of Property

County and State

He was cited for extraordinary heroism during the Battle of Midway when he delivered a bomb from an altitude of 500' in a plane on fire from enemy artillery. He crashed into the sea and perished. Fleming is memorialized in Section F-1.

Richard E. Kraus, Private. Private Richard E. Kraus (World War II), 8th Amphibious Tractor Battalion, United States Marine Corps, distinguished himself in service at Pelelie, Palau Islands, on October 5, 1944. Kraus volunteered to evacuate a wounded comrade from the front lines. When he and three companions were attacked with a barrage of hand grenades, Kraus flung himself onto one, saving the remaining members of the rescue party. Kraus is interred in Section M, Grave 5710.

James D. LaBelle, Private. Private First Class James D. LaBelle (World War II), 27th Marines, 5th Marine Division, United States Marine Corps, distinguished himself at Iwo Jima, Volcano Islands, on March 8, 1945. He was in a foxhole with two other marines when a hand grenade landed in their midst. He shouted a warning and dived onto the grenade, saving his fellow marines. He is interred in Section B-1, Grave 422-S.

George H. Mallon, Captain. Captain Mallon (World War I), 132nd Infantry, 33rd Division, United States Army, distinguished himself in service at Bois-de-Forges, France, on September 26, 1918. He was the first interment at Fort Snelling National Cemetery (Section DS, Grave 1-S).

Oscar F. Nelson, Machinist Mate. Machinist Mate First Class Nelson served with the United States Navy and distinguished himself on board the USS *Bennington* on July 21, 1905. Nelson was cited for heroism during a boiler explosion. He is interred in Section DS, Grave 64-N.

Arlo Olson, Captain. Arlo Olson (World War II), 15th Infantry, 3rd Infantry Division, United States Army, distinguished himself in service at the crossing of the Volturno River, Italy, on August 31, 1944. Olson led a company through 20 miles of mountainous enemy territory in thirteen days. He repeatedly faced close-range enemy fire, rushing enemy defenses and killing Germans. He fearlessly led his men and was fatally wounded while making a reconnaissance for defensive positions. Olson is interred in Section C-24, Grave 13787.

Robert J. Pruden, Staff Sergeant. Staff Sergeant Robert J. Pruden (Vietnam), 75th Infantry, United States Army, Quang Ngai Province, Republic of Vietnam, distinguished himself in service on November 29, 1969. Pruden died after drawing hostile fire during an enemy ambush. He managed to drive off the enemy twice and direct his men to defensive positions while calling for evacuation helicopters, which safely evacuated his team. Pruden is interred in Section M, Grave 5710.

Richard Keith Sorenson, First Lieutenant. Richard Keith Sorenson (World War II), United States Marine Corps, distinguished himself at Namur Island, Kwajalein Atoll, Marshall Islands, February 1-2, 1944. While in a shellhole with five other marines he threw himself on a grenade thrown into their midst, he was severely wounded but saved the lives of his comrades. Following his death on October 9, 2004, Sorenson is interred at Section B, Grave 149-1.

Fort Snelling National Cemetery
Name of Property

Hennepin, MN
County and State

Group Burials

There are twenty-eight group burials in Section C that hold the remains of ninety-seven decedents. The circumstances of death—such as airplane crashes—preclude the separation of the remains and therefore the comrades-in-arms share a common grave. Larger marble government headstones with names, ranks, and dates note the decedents in each group. The largest group burial here is of nine World War II officers and enlisted men who died together on May 18, 1945. C-1 has three group sites with a total of eight decedents; C-3 has one group site with a total of two decedents; C-4 has twelve group sites with a total of twenty-seven decedents; C-6 has eight group sites with a total of twenty-three decedents; C-7 has one group site with a total of three decedents; C-13 has one group site with a total of three decedents; and C-22 has two group sites with a total of four decedents.

Conclusion

Expansion of Fort Snelling National Cemetery into its undeveloped east and northeast sections will undoubtedly be distinct from the older burial sections. However, the cemetery plan harmonizes through rows of upright marble headstones marking the graves of our nation's heroes and through thoughtful additions and expansions to its landscape since its establishment. This cemetery is a lasting tribute and a shrine to the memory of the sacrifices of many servicemen and women. Founded during the Inter-World War era, Fort Snelling National Cemetery is a testament to the nation's dedication to its honored dead.

Fort Snelling National Cemetery is nationally significant under Criterion A for its association with the expansion of the National Cemetery System during the Inter-World War period. This cemetery, along with six others, serves as a memorial to the sacrifices of the U.S. military, and is a reflection of the expanded burial and memorial mission established during the Civil War with the earliest national cemeteries. Fort Snelling National Cemetery is nominated as part of a National Register of Historic Places Multiple Property Submission for Inter-World War National Cemeteries, 1934-1939.

Fort Snelling National Cemetery
Name of Property

Hennepin, MN
County and State

9. Major Bibliographical References

Unpublished

Department of Veterans Affairs (VA), *Report on the National Cemetery System*, prepared in response to Public Law 99-576 (Sec. 412), Veterans Benefit Improvement and Health-Care Authorization Act of 1986, February 1994.

Design for Flat Marker;" Box 17, Folder 4, Fort Sam Houston National Cemetery; Department of Memorial Affairs (DMA), National Cemetery Historical File (NCHF); Records of the Veterans Administration (VA), Record Group 15 (RG 15); National Archives Building, Washington, DC (NAB).

Fort Snelling Research Materials. Minnesota Historical Society (MHS). St. Paul, MN.

Gibbins, Henry, Maj. Gen., Quartermaster General, to Chmn. John Soper, Fort Snelling National Cemetery (FSNC) Committee, July 13, 1938; Folder 687 FSNC 1938 Vol. III; General Correspondence "Geographical File" (GCGF) 1936-1945; Records of the Office of the Quartermaster General (OQMG), Record Group 92 (RG 92); National Archives at College Park, MD (NACP).

Harris, John T., Col. QMC, to Maj. John R. Holt, Quartermaster, Fort Snelling, MN, June 17, 1939; Folder 687, FSNC, MN Vol. V, July to Dec. 1939; GCGF 1936-45; Records of the OQMG, RG 92; NACP.

Historical File. Fort Snelling National Cemetery. Minneapolis, MN.

History Program Collection (HPC). National Cemetery Administration (NCA). Washington, DC.

Holt, Dean W., *American Military Cemeteries: A Comprehensive Illustrated Guide to the Hollowed Grounds of the United States, Including Cemeteries Overseas*. Jefferson, NC: McFarland and Company, 1992.

Holt, John R., Lt. Col., Quartermaster Corps (QMC), to Quartermaster General, Washington, DC, January 7, 1941; Box 580, Folder 624, Fort Snelling National Cemetery (FSNC) 1938 ep; GCGF 1936-45; Records of the OQMG, RG 92; NACP.

Holt, John R., Maj., Introductory Remarks, July 14, 1939, Folder 687 FSNC, MN, Vol V, July to Dec. 1939; GCGF 1936-45; Records of the OQMG, RG 92; NACP.

Maj. Homer W. Jones, to Constructing Quartermaster, Fort Snelling, MN, July 30, 1940; Folder 655, FSNC 1937; GCGF 1936-45; Records of the OQMG, RG 92; NACP.

Fort Snelling National Cemetery
Name of Property

Hennepin, MN
County and State

Johnson, Donald E. *A Study of the National Cemetery System*. Washington, DC: VA, 1974.

Keeper of the National Register, "National Register Eligibility of National Cemeteries – A Clarification of Policy," National Register Statement of Policy. September 8, 2011, Washington, DC.

Kirk, J.W., Works Projects Section, Minnesota, to Quartermaster General, Washington, DC, October 16, 1940; Folder 687, Fort Snelling Improvements Vol. VI, Beginning Jan. 1940; GCGF 1936-45; Records of the OQMG, RG 92; NACP.

Lombard & Ludwig, Inc., Photographs, July 29, 1940 and August 5, 1940; Box 582, Folder 655, FSNC, 1937; GCGF 1936-45, RG 92; NACP.

Mackay, W.N., Vice President, Meierjohan – Metalcrafts – Wengler, Inc., to Chief Clerk, War Department, Washington, DC, October 11, 1938; Folder 687, FSNC 1938 Vol. III; GCGF 1936-45; Records of the OQMF, RG 92; NACP.

Maintenance Ledgers, various dates; Box 18, Folders 7-9, FSNC; DMA, NCHF; Records of the VA, RG 15, NAB.

Office of Construction Management Records. NCA. Washington, DC.

Soper, John, Chmn., FSNC Committee, to Col. Ira K. Evans, QMC, Washington, DC, February 15, 1946; Folder 687 FSNC 1945; GCGF 1936-45; Records of the OQMG, RG 92, NACP.

Soper, John, Chmn., FSNC Committee, to Col. Ira K. Evans, QMC, November 15, 1946; Folder 687 FSNC 1945; GCGF 1936-45; Records of the OQMG, RG 92; NACP.

Soper, John, Chmn., FSNC Committee, to Maj. Gen E.B. Gregory, Quartermaster General, October 10, 1942; Folder 687 FSNC 1940a; GCGF 1936-45; Records of the OQMG, RG 92; NACP.

Soper, John, Chmn., FSNC Committee, to Maj. Gen. Henry Gibbins, Quartermaster General, June 30, 1938; Folder 687 FSNC 1938 Vol. III; GCGF 1936-45; Records of the OQMG, RG 92; NACP.

Ward, J. Moultrie, Maj., QMC, to Constructing Quartermaster, Fort Snelling, MN, October 7, 1938; Folder 687, FSNC 1938 Vol. III; GCGF 1936-1945; Records of the OQMG, RG 92; NACP.

Williams, Everett C., Maj., (FA) IGD, Asst. Corps Area Inspector General, to Commanding Gen., 7th Corps Area, Omaha, Nebraska, October 27, 1939; Box 580, Folder 331.1 Fort Snelling, MN, NC 1939; GCGF 1936-45; Records of the OQMG, RG 92; NACP.

Fort Snelling National Cemetery
Name of Property

Hennepin, MN
County and State

Published

Chicoine, Stephen. *Our Hallowed Ground: World War II Veterans of Fort Snelling National Cemetery*. Minneapolis: University of Minnesota Press, October 2005.

Congressional Medal of Honor Society. "Full Archive." www.CMOHS.org. Accessed 2008-2009.

Disabled American Veterans. "Fort Snelling National Cemetery Informational Brochure," pamphlet. Minneapolis: Disabled American Veterans Minneapolis Chapter #1, ca. 1992.

Hansen, Marcus Lee. *Old Fort Snelling, 1819-1858*. Iowa City: State Historical Society of Iowa, 1918.

Lang, George, Raymond Luther Collins, and Gerard White. *Medal of Honor Recipients, 1863-1994: World War II to Somalia*. New York: Facts on File, Inc., 1995.

MHS. "Military History at Fort Snelling." Historic Fort Snelling.
<http://www.historicfortsnelling.org/history/military-history>. Accessed October 1, 2014.

Steere, Edward. "Shrines of the Honored Dead: A Study of the National Cemetery System" (a series of six articles written by Edward Steere, an OQMG historian). *Quartermaster Review* (1953-54).

United States Congress. House. *Amending the Act of June 23, 1936, Authorizing the Secretary of War to Set Apart as a National Cemetery Certain Lands of the Fort Snelling Military Reservation, Minn.* 75th Cong., 1st sess., May 12, 1937.

Weland, Gerald. *Last Post*. Bowie, MD: Heritage Books, Inc., 1990.

Fort Snelling National Cemetery
Name of Property

Hennepin, MN
County and State

Previous documentation on file (NPS):

- preliminary determination of individual listing (36 CFR 67) has been requested
- previously listed in the National Register
- previously determined eligible by the National Register
- designated a National Historic Landmark
- recorded by Historic American Buildings Survey # _____
- recorded by Historic American Engineering Record # _____
- recorded by Historic American Landscapes Survey # MN-1

Primary location of additional data:

- State Historic Preservation Office
- Other State agency
- Federal agency
- Local government
- University
- Other

Name of repository: Minnesota Historical Society, Hennepin County Public Library, National Archives, Fort Snelling National Cemetery

Historic Resources Survey Number (if assigned): _____

10. Geographical Data

Acreege of Property 436.3

Use either the UTM system or latitude/longitude coordinates

Latitude/Longitude Coordinates

Datum if other than WGS84: _____
(enter coordinates up to 6 decimal places)

1. Latitude: 44.876427 Longitude: -93.223053
2. Latitude: 44.876397 Longitude: -93.214770
3. Latitude: 44.872507 Longitude: -93.205597

Fort Snelling National Cemetery
Name of Property

Hennepin, MN
County and State

- 4. Latitude: 44.870714 Longitude: -93.203592
- 5. Latitude: 44.869025 Longitude: -93.200126
- 6. Latitude: 44.863425 Longitude: -93.216873
- 7. Latitude: 44.863318 Longitude: -93.222624

UTM References

Datum (indicated on USGS map):

NAD 1927 or NAD 1983

- 1. Zone: 15N Easting: 482386 Northing: 4969241
- 2. Zone: 15N Easting: 482413 Northing: 4967759
- 3. Zone: 15N Easting: 483713 Northing: 4967966
- 4. Zone: 15N Easting: 483945 Northing: 4968521

Verbal Boundary Description (Describe the boundaries of the property.)

Post Road and Minneapolis International Airport border Fort Snelling National Cemetery to the north by; to the east and south is Interstate 5; and to the west 34th Avenue South. The total area of the cemetery is slightly more than 436 acres, all of which lie on lands owned by the Fort Snelling Military Reservation.

Boundary Justification (Explain why the boundaries were selected.)

The boundary corresponds to the legal boundary of the cemetery within the Fort Snelling Military Reservation. Post Road, Interstate 5, and 34th Avenue South act as definite boundaries that aim to incorporate all areas of interment, as well as all areas of the cemetery used for expansion and maintenance purposes. Small sections along Post Road to the northwest of the property area excluded from the boundary belong to the Minneapolis International Airport.

Fort Snelling National Cemetery
Name of Property

Hennepin, MN
County and State

11. Form Prepared By

name/title: Kristie L. Person, and Staci Richey, Historians
organization: New South Associates, Inc.
street & number: 6150 E Ponce de Leon Avenue
city or town: Stone Mountain state: Georgia zip code: 30083
e-mail: kperson@newsouthassoc.com
telephone: 770-498-4155
date: November 3, 2015

Additional Documentation

Submit the following items with the completed form:

- **Maps:** A **USGS map** or equivalent (7.5 or 15 minute series) indicating the property's location.
- **Sketch map** for historic districts and properties having large acreage or numerous resources. Key all photographs to this map.

Photographs

Photo Log

Name of Property: Fort Snelling National Cemetery

City or Vicinity: Minneapolis

County: Hennepin State: Minnesota

Photographer: Staci Richey

Date Photographed: October 6-10, 2008

Description of Photograph(s) and number, include description of view indicating direction of camera:

- 1 of 51. View to west, Stormwater Pond
- 2 of 51. View to north, Section D and Colvill Road
- 3 of 51. View to northeast, Postern Gate #3
- 4 of 51. View to northwest, *Memorial Day Order* Plaque

Fort Snelling National Cemetery

Hennepin, MN

Name of Property

County and State

- 5 of 51. View to northeast, "Gettysburg Address" Plaque
- 6 of 51. View to southwest, Mallon Drive
- 7 of 51. View to west, Administration Office
- 8 of 51. View to southwest, Administration Office Front Oblique
- 9 of 51. View to south, Administration Office North Façade
- 10 of 51. View to west, Entrance Gates Archway Interior Detail
- 11 of 51. View to west, Public Information Center Front
- 12 of 51. View to southeast, Public Information Center Front Oblique
- 13 of 51. View to southwest, Public Information Center Rear Oblique
- 14 of 51. View to northwest, Section A
- 15 of 51. View to south, 34th Avenue
- 16 of 51. View to northeast, New Entrance Gates
- 17 of 51. View to southeast, Peck Avenue
- 18 of 51. View to north, Administration Office South Elevation
- 19 of 51. View to east, Committal Shelter 2
- 20 of 51. View to southeast, Kraus Circles Memorial Group
- 21 of 51. View to northwest, Entrance Gates and Administration Office
- 22 of 51. View to northeast, Entrance Gates
- 23 of 51. View to northeast, West Archway Entrance Gates
- 24 of 51. View to north, Interior West Archway Entrance Gates
- 25 of 51. View to southwest, Entrance Gates
- 26 of 51. View to southwest, Mallon Road
- 27 of 51. View to east, Peck Avenue
- 28 of 51. View to northwest, Section R
- 29 of 51. View to west, Flagpole Circle
- 30 of 51. View to east, John Page Drive
- 31 of 51. View to southwest, General View from Berm
- 32 of 51. View to south, 34th Avenue South
- 33 of 51. View to northeast, West End of Berm
- 34 of 51. View to south, Carillon Tower
- 35 of 51. View to south, 34th Avenue South with Light Rail Tracks
- 36 of 51. View to east, Columbarium Courtyard I
- 37 of 51. View to northeast, Section D at Assembly Area 1 and Peck Avenue
- 38 of 51. View to northeast, Assembly Area 3
- 39 of 51. View to southwest, Mallon Road
- 40 of 51. View to southwest, Labelle Drive
- 41 of 51. View to northeast, Labelle Drive at Pruden Drive
- 42 of 51. View to northwest, Carillon Tower
- 43 of 51. View to northwest, Carillon Tower
- 44 of 51. View to northeast, Maintenance Facility
- 45 of 51. View to west, Maintenance Facility
- 46 of 51. View to north, Maintenance Facility/Restrooms
- 47 of 51. View to northwest, Public Information Center Rear Elevation
- 48 of 51. View to west, Flagpole Base
- 49 of 51. View to northeast, Maintenance Facility (modern)

Fort Snelling National Cemetery
Name of Property

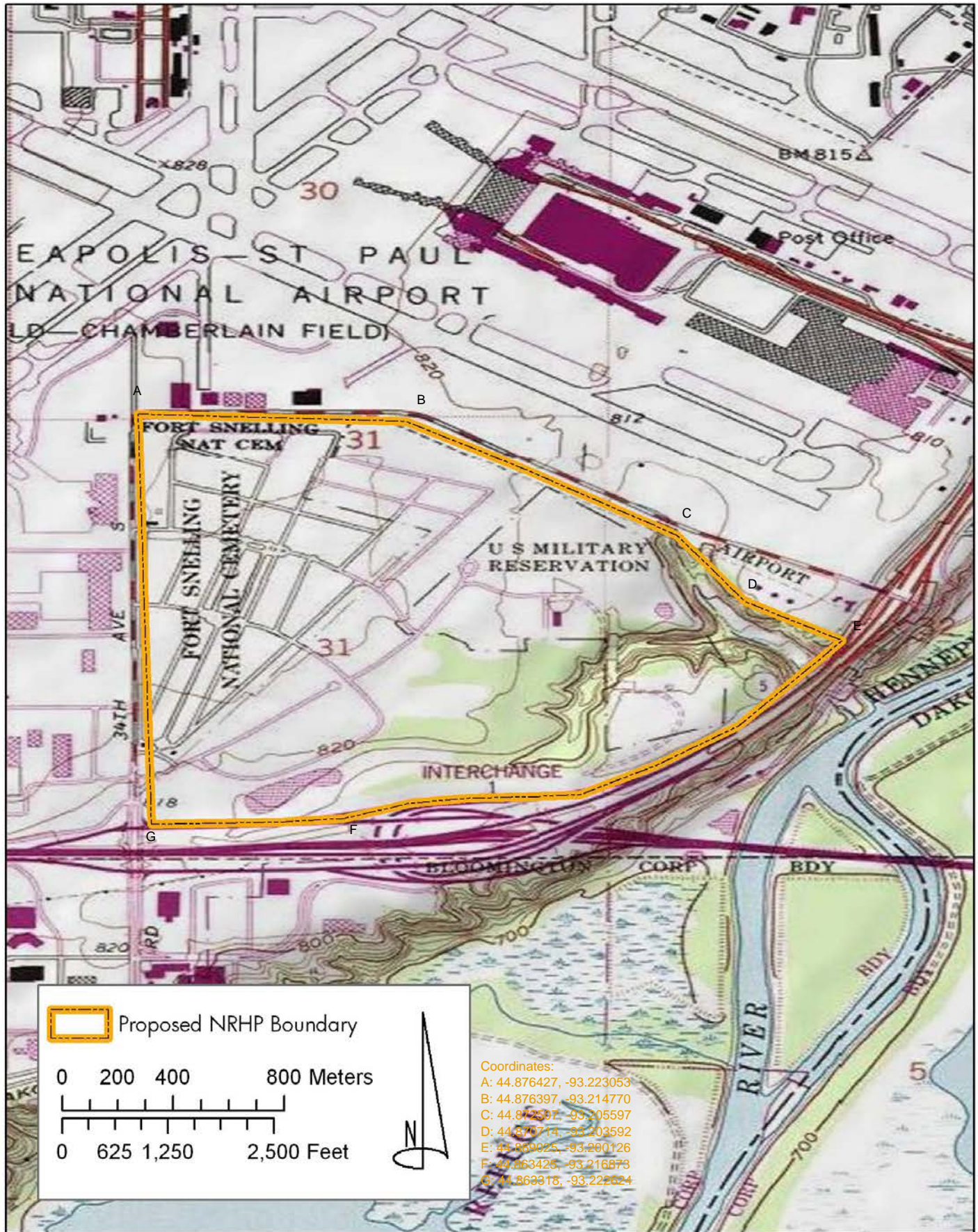
Hennepin, MN
County and State

50 of 51. View to northeast, Funeral Cortège Gate
51 of 51. View to east, Committal Shelter 4

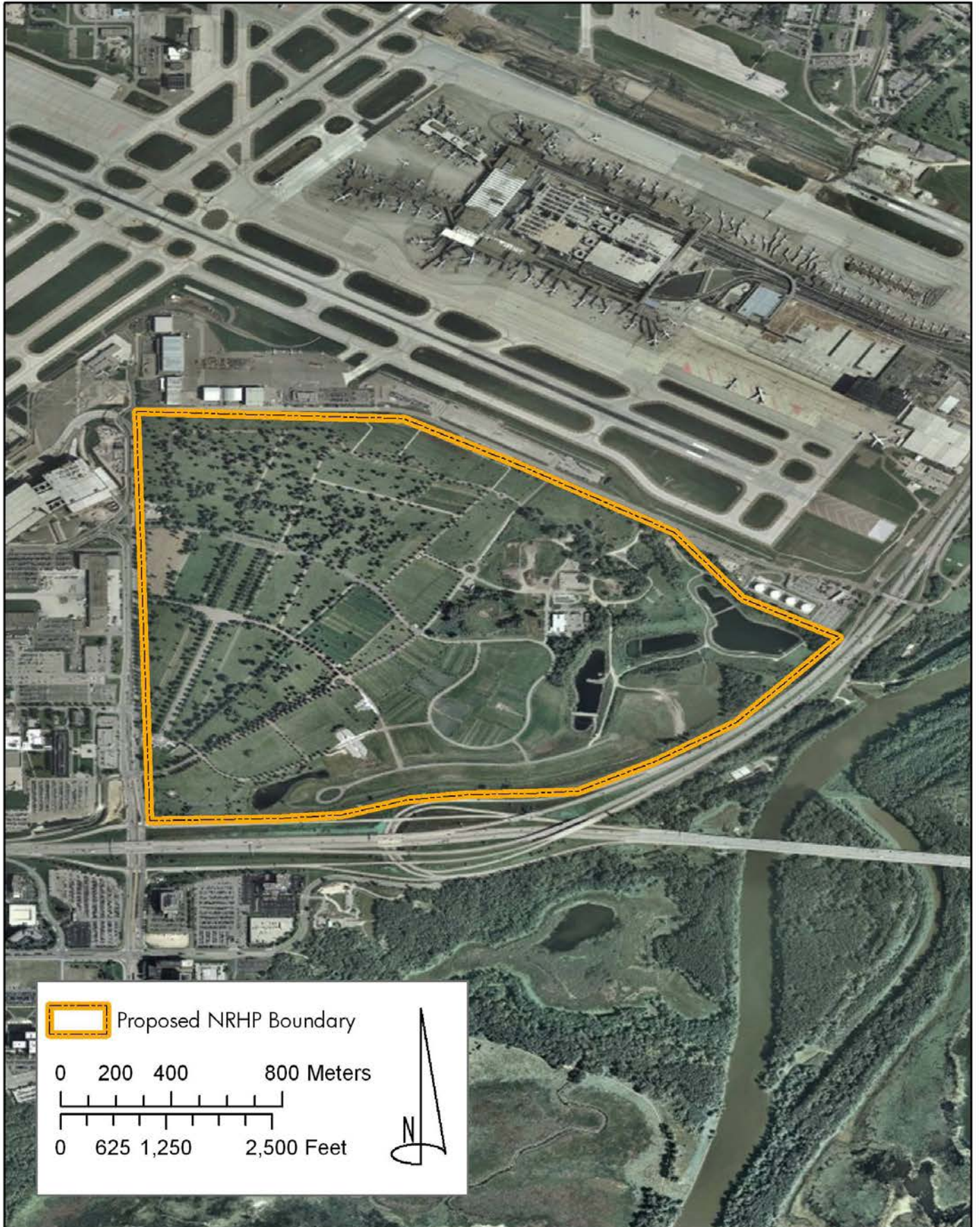
Paperwork Reduction Act Statement: This information is being collected for applications to the National Register of Historic Places to nominate properties for listing or determine eligibility for listing, to list properties, and to amend existing listings. Response to this request is required to obtain a benefit in accordance with the National Historic Preservation Act, as amended (16 U.S.C.460 et seq.).

Estimated Burden Statement: Public reporting burden for this form is estimated to average 100 hours per response including time for reviewing instructions, gathering and maintaining data, and completing and reviewing the form. Direct comments regarding this burden estimate or any aspect of this form to the Office of Planning and Performance Management, U.S. Dept. of the Interior, 1849 C. Street, NW, Washington, DC.

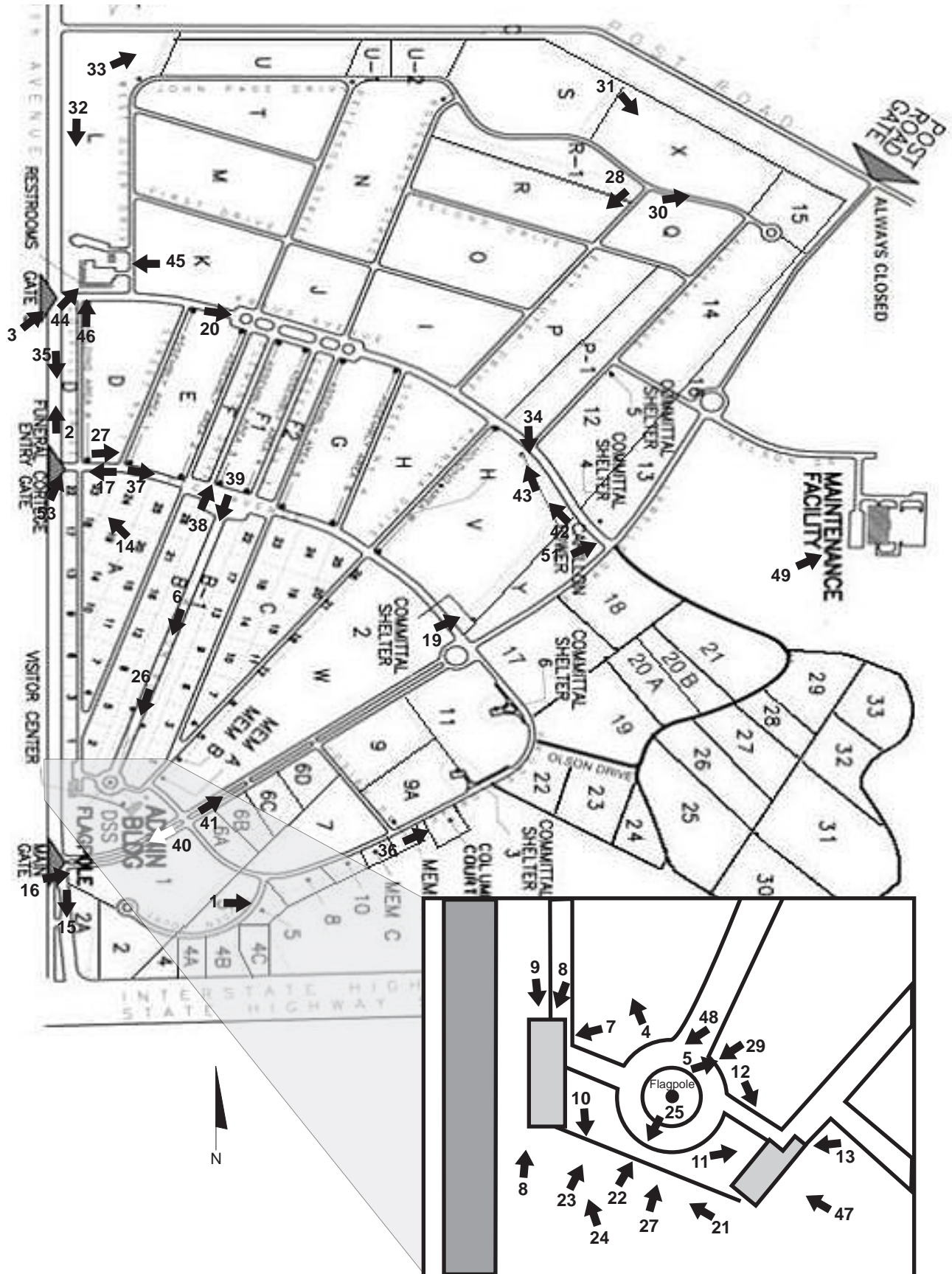
Fort Snelling National Cemetery, Proposed NRHP Boundary



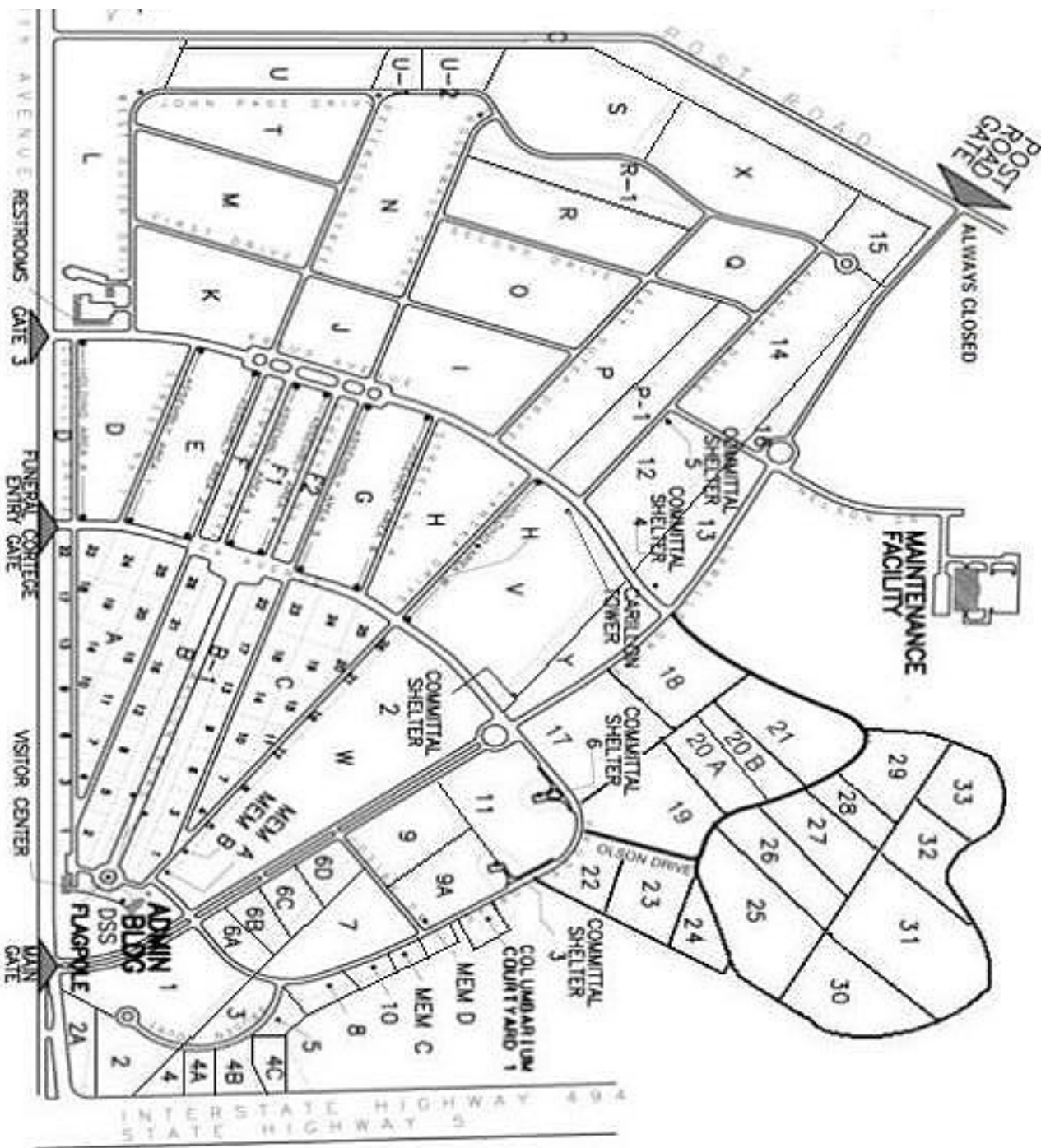
Source: USGS 7.5' Quadrangles Saint Paul West (1973) and Saint Paul SW (1981), Minnesota



Fort Snelling National Cemetery, Photo Key

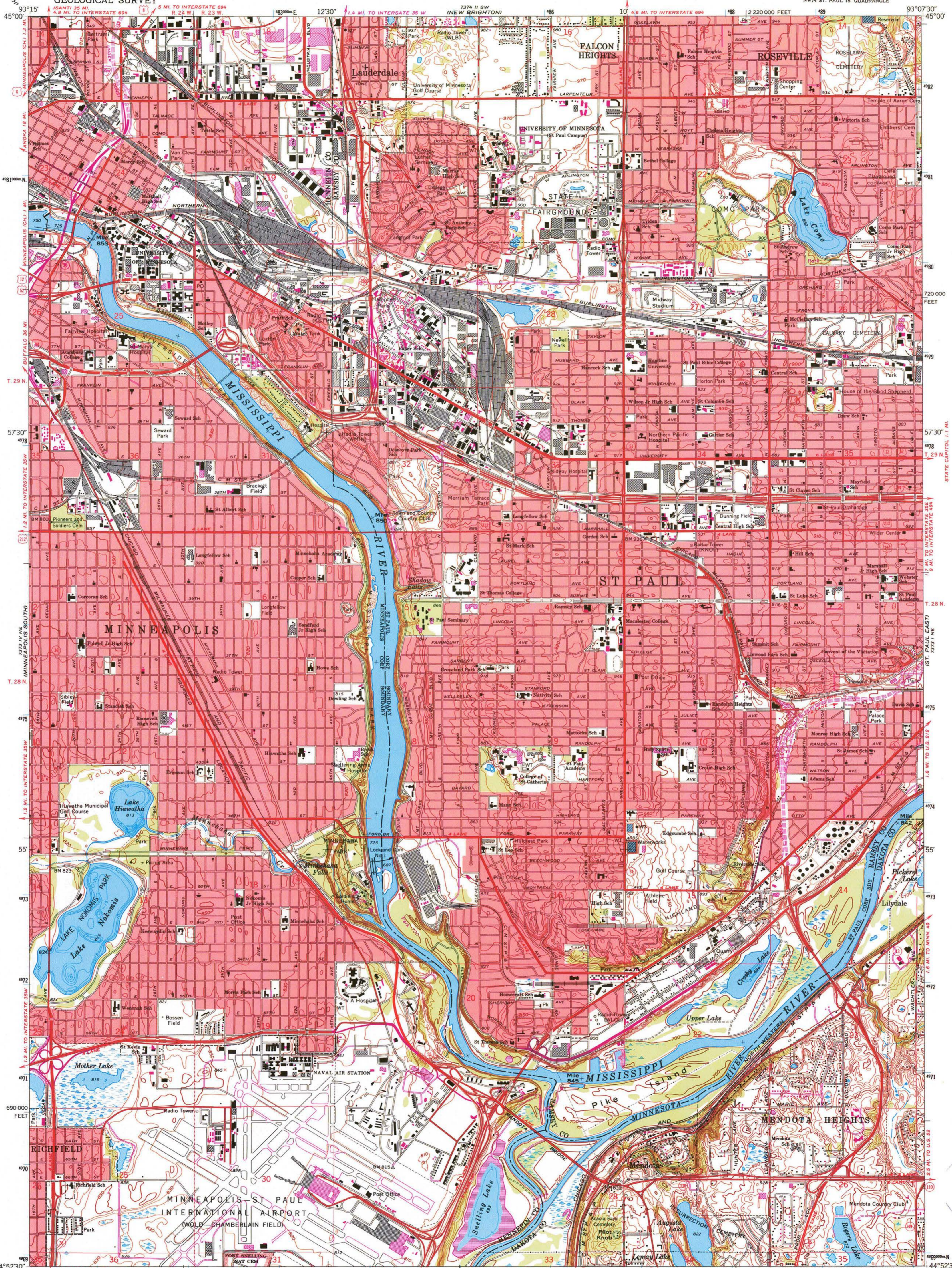


Fort Snelling National Cemetery, Sketch Map



UNITED STATES
DEPARTMENT OF THE INTERIOR
GEOLOGICAL SURVEY

ST. PAUL WEST QUADRANGLE
MINNESOTA
7.5 MINUTE SERIES (TOPOGRAPHIC)
NW/4 ST. PAUL 15' QUADRANGLE



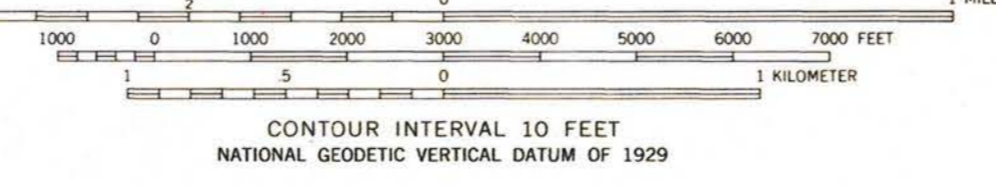
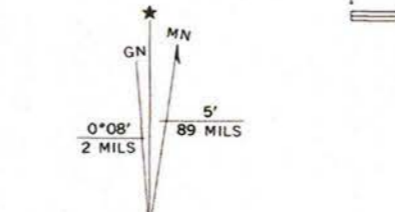
Mapped, edited, and published by the Geological Survey

Control by USGS and USC&GS
Topography by photogrammetric methods from aerial photographs taken 1947 and planimeter surveys 1951. Revision from aerial photographs taken 1966. Field checked 1967

Hydrography compiled from information furnished by Minnesota Department of Conservation

Polyconic projection. 1927 North American datum
10,000-foot grid based on Minnesota coordinate system, south zone
1000-meter Universal Transverse Mercator grid ticks, zone 15, shown in blue

Red tint indicates areas in which only landmark buildings are shown
Dotted land lines established by private survey
Map photos inspected 1977
No major culture or drainage changes observed



THIS MAP COMPLIES WITH NATIONAL MAP ACCURACY STANDARDS
FOR SALE BY U.S. GEOLOGICAL SURVEY
DENVER, COLORADO 80225, OR RESTON, VIRGINIA 22092
A FOLDER DESCRIBING TOPOGRAPHIC MAPS AND SYMBOLS IS AVAILABLE ON REQUEST

ROAD CLASSIFICATION

Heavy duty	Light duty
Medium duty	Unimproved dirt
Interstate Route	U.S. Route
	State Route



ST. PAUL WEST, MINN.
NW/4 ST. PAUL 15' QUADRANGLE
4493-H2-TF-024
PHOTOINSPECTED 1977
1967
PHOTOREVISED 1972
DMA 7373 1 NW-SERIES V872

Revisions shown in purple compiled from aerial photographs taken 1972. This information not field checked

SEP 14 1988
REC'D FILE COPY

Zone 15 N
1. E 482386, N 4969241
2. E 482413, N 4967959
3. E 483713, N 4967966
4. E 483945, N 4968521

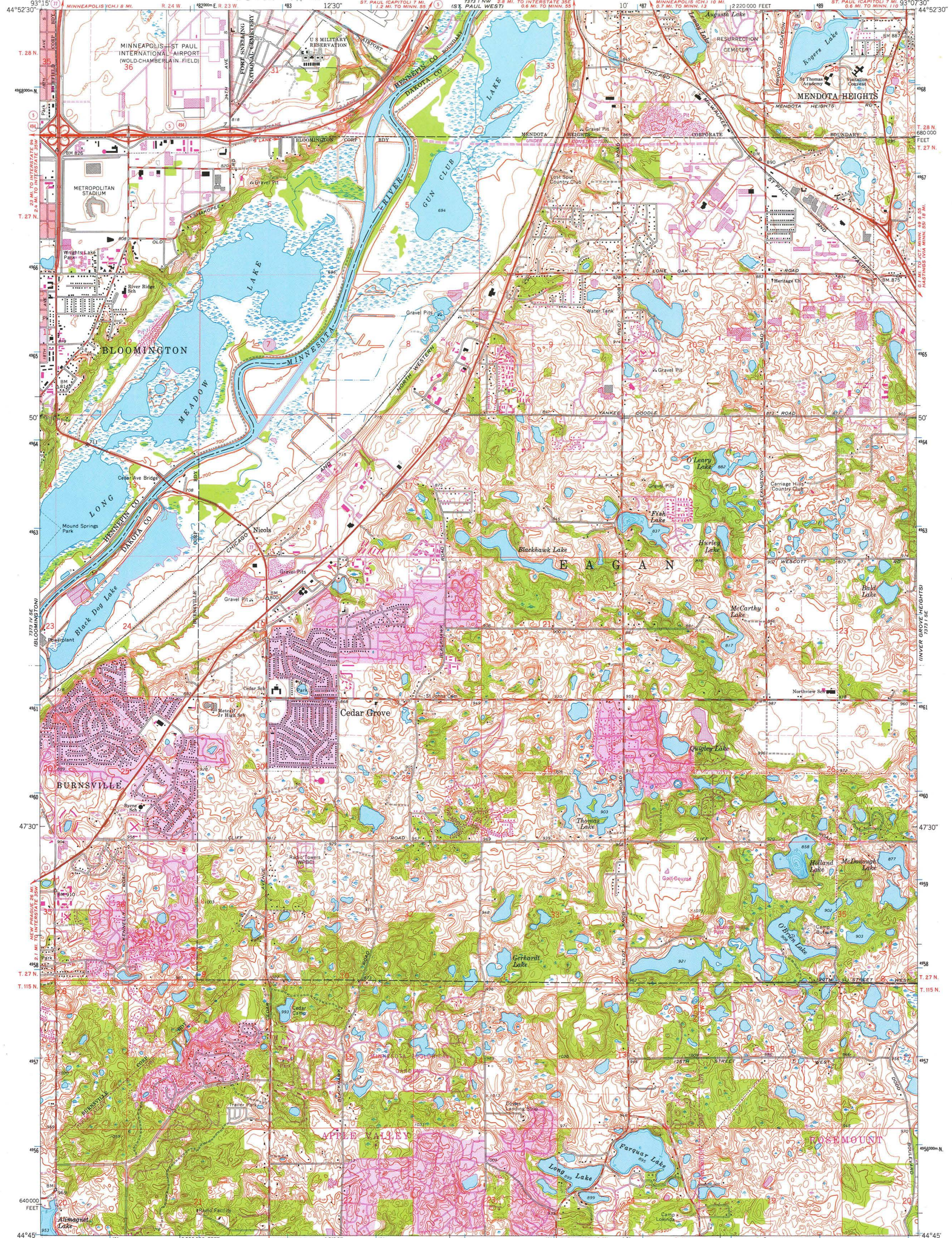
BLONKOWSON
2011 1/4 E

LOWER GROVE HEIGHTS

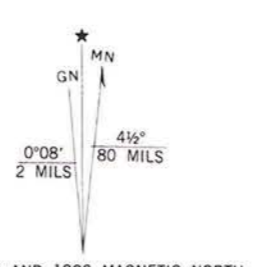
UNITED STATES
DEPARTMENT OF THE INTERIOR
GEOLOGICAL SURVEY

ST. PAUL SW QUADRANGLE
MINNESOTA
7.5 MINUTE SERIES (TOPOGRAPHIC)

Carl
zone 15 N
1. E 48 2386, N 4969 241
2. E 48 2413, N 496 7759
3. E 48 2413, N 496 7759
4. E 48 2413, N 496 7759



Mapped, edited, and published by the Geological Survey
Control by USGS and USC&GS
Topography by photogrammetric methods from aerial photographs
taken 1947 and plane-table surveys 1951. Revision from
aerial photographs taken 1966. Field checked 1967
Hydrography compiled from information furnished by
Minnesota Department of Conservation
Polyconic projection. 1927 North American datum
10,000-foot grid based on Minnesota coordinate system, south zone
1000-meter Universal Transverse Mercator grid ticks,
zone 15, shown in blue
Red tint indicates areas in which only landmark buildings are shown
Dotted land lines established by private survey
To place on the predicted North American Datum 1983
move the projection lines 7 meters north and
17 meters east as shown by dashed corner ticks



SCALE 1:24,000
CONTOUR INTERVAL 10 FEET
NATIONAL GEODETIC VERTICAL DATUM OF 1929



ROAD CLASSIFICATION
Primary highway, hard surface
Secondary highway, hard surface
Light-duty road, hard or improved surface
Unimproved road
Interstate Route
U. S. Route
State Route

THIS MAP COMPLIES WITH NATIONAL MAP ACCURACY STANDARDS
FOR SALE BY U. S. GEOLOGICAL SURVEY, RESTON, VIRGINIA 22092
A FOLDER DESCRIBING TOPOGRAPHIC MAPS AND SYMBOLS IS AVAILABLE ON REQUEST

Revisions shown in purple compiled from aerial
photographs taken 1972 and 1977. Map edited 1980
This information not field checked
Purple tint indicates extension of urban area

ST. PAUL SW, MINN.
SW 1/4 ST. PAUL 15' QUADRANGLE
N4445-W9307:5/7.5
1967
PHOTOREVISED 1972 AND 1980
DMA 7373 15-SW-SERIES V872

MAP AND AIR PHOTO
LIBRARY
JUN 15 1981
University of Wisconsin
Madison







72nd St



ADDRESS BY PRESIDENT LINCOLN
AT THE DEDICATION OF
THE GETTYSBURG NATIONAL CEMETERY
NOVEMBER 19, 1863.

FOUR SCORE AND SEVEN YEARS AGO OUR FATHERS BROUGHT FORTH ON THIS CONTINENT A NEW NATION, CONCEIVED IN LIBERTY, AND DEDICATED TO THE PROPOSITION THAT ALL MEN ARE CREATED EQUAL.

NOW WE ARE ENGAGED IN A GREAT CIVIL WAR, TESTING WHETHER THAT NATION, OR ANY NATION SO CONCEIVED AND SO DEDICATED, CAN LONG ENDURE. WE ARE HERE ON A GREAT BATTLE-FIELD OF THAT WAR. WE HAVE COME TO DEDICATE A PORTION OF THAT FIELD. AS A FINAL RESTING PLACE FOR THOSE WHO HERE GAVE THEIR LIVES THAT THE NATION MIGHT LIVE. LET US TOGETHER FELLOWSHIP AND BROTHERHOOD THAT WE HOLD ON THIS FIELD. A LARGER BATTLE WE CAN NOT DEDICATE.

WE CAN NOT DEDICATE—WE CAN NOT HALLUCINATE—THE BATTLE-FIELD, THE LIVING AND THE DEAD WHO STRUGGLED HERE. HAVE DEDICATED IT. TAKE CARE FOR THE FUTURE OF OUR COUNTRY. THE WORLD WILL LITTLE NOTE, NOR LONG REMEMBER WHERE WE ARE HERE. BUT IT CAN NEVER FORGET THAT THEY WHO HERE GAVE THEIR LIVES, RATHER TO BE DEDICATED HERE TO THE UNFINISHED WORK, WHICH THEY WHO FIGHT HERE HAVE HERE TO BE HERE DEDICATED TO THE GREAT AND FORTHRIGHT ISSUE OF—THAT FROM THESE BATTLE-FIELDS WE TAKE INCREASED RESOLUTION TO TAKE CARE FOR WHICH THEY GAVE THEIR BLOOD. OF DEDICATION—THAT WE WILL HIGHLY RESOLVE THAT THESE DEAD SHALL NOT HAVE DIED IN VAIN—THAT THIS NATION, UNDER GOD, SHALL HAVE A NEW BIRTH OF FREEDOM—AND THAT GOVERNMENT OF THE PEOPLE, BY THE PEOPLE, FOR THE PEOPLE, SHALL NOT PERISH FROM THE EARTH.















FORT SNELLING NATIONAL CEMETERY
PUBLIC INFORMATION CENTER





UNKNOWN
U.S. SOLDIER

UNKNOWN
U.S. SOLDIER

UNKNOWN
U.S. SOLDIER

UNKNOWN
U.S. SOLDIER

UNKNOWN
U.S. SOLDIER

UNKNOWN
U.S. SOLDIER

UNKNOWN
U.S. SOLDIER

UNKNOWN
U.S. SOLDIER

UNKNOWN
U.S. SOLDIER

UNKNOWN
U.S. SOLDIER

UNKNOWN
U.S. SOLDIER

UNKNOWN
U.S. SOLDIER

UNKNOWN
U.S. SOLDIER

UNKNOWN
U.S. SOLDIER





34th Ave S

LEFT TURN
YIELD
IN GREEN

PERMITS &
ASSEMBLY AREAS

↑

↑







PLEASE
DO NOT
SMOKE

























X 3607
MYRTLE A
WIFE OF
JAMES C. WOOD
BORN 1878
DIED 1968

MARY
HATTIS
WIFE
OF
JAMES C. WOOD
BORN 1878
DIED 1968

WIFE OF
JAMES C. WOOD
BORN 1878
DIED 1968

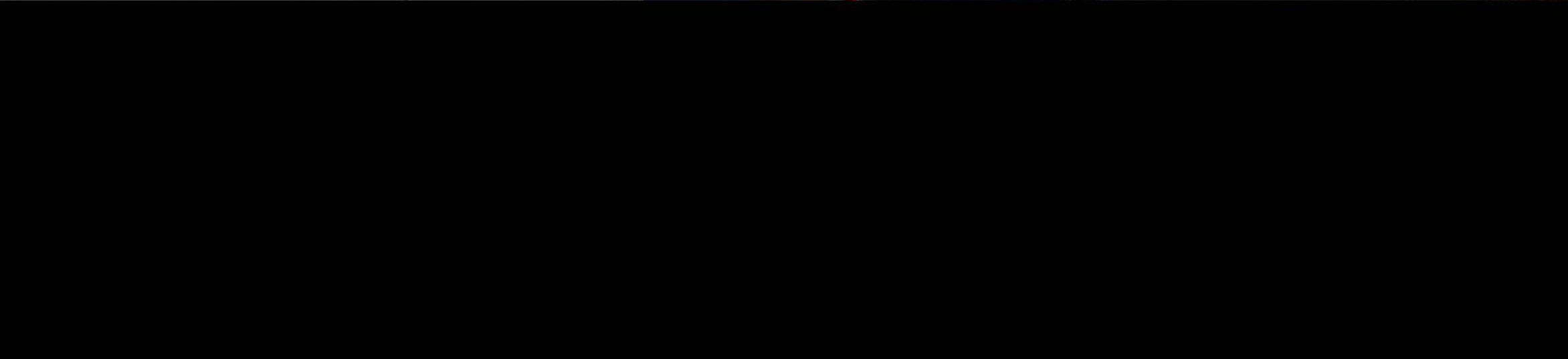
WIFE OF
JAMES C. WOOD
BORN 1878
DIED 1968













D

SEC
D

25







Attention Visitors

As you enter the cemetery, you will see a large sign on the left side of the road. This sign contains information about the cemetery and the services provided by the cemetery.

PLEASE READ THE FOLLOWING INFORMATION CAREFULLY:

- 1. All burials are by cremation.
- 2. All burials are in the ground.
- 3. All burials are in the ground.
- 4. All burials are in the ground.
- 5. All burials are in the ground.
- 6. All burials are in the ground.
- 7. All burials are in the ground.
- 8. All burials are in the ground.
- 9. All burials are in the ground.
- 10. All burials are in the ground.

Thank you for your attention.

Assembly Area →







Covill Dr.
Kraus Ave.



HUMPHREY
TERMINAL
AIRTRAM
ICELANDIAIR
MIDWEST

RESTROOMS OPEN
MON - FRI
FROM 8:00AM - 4:00PM











UNITED STATES DEPARTMENT OF THE INTERIOR
NATIONAL PARK SERVICE

NATIONAL REGISTER OF HISTORIC PLACES
EVALUATION/RETURN SHEET

REQUESTED ACTION: NOMINATION

PROPERTY NAME: Fort Snelling National Cemetery

MULTIPLE NAME: Inter-World War National Cemeteries, 1934-1939 MPS

STATE & COUNTY: MINNESOTA, Hennepin

DATE RECEIVED: 1/22/16 DATE OF PENDING LIST: 2/22/16
DATE OF 16TH DAY: 3/08/16 DATE OF 45TH DAY: 3/08/16
DATE OF WEEKLY LIST:

REFERENCE NUMBER: 16000060

REASONS FOR REVIEW:

APPEAL: N DATA PROBLEM: N LANDSCAPE: N LESS THAN 50 YEARS: N
OTHER: N PDIL: N PERIOD: N PROGRAM UNAPPROVED: N
REQUEST: Y SAMPLE: N SLR DRAFT: N NATIONAL: Y

COMMENT WAIVER: N

___ACCEPT ___RETURN ___REJECT _____DATE

ABSTRACT/SUMMARY COMMENTS:

The Fort Snelling National Cemetery is nationally significant under National Register Criterion A (Military History, Social History) for its association with the expansion of the National Cemetery system during the Inter-war period. Established between 1937-1939, the 436-acre cemetery meets the Registration Requirements set forth in the associated MPS cover document.

[The current nomination and MPS focuses solely on National Register eligibility under Criterion A. With additional contextual development and evaluation these properties might also qualify for significance under Criteria C in the area of landscape architecture.]

RECOM./CRITERIA Accept Criterion A

REVIEWER Paul R. Lusignea DISCIPLINE HISTORIAN

TELEPHONE _____ DATE 3/8/2016

DOCUMENTATION see attached comments Y/N see attached SLR Y(N)

If a nomination is returned to the nominating authority, the nomination is no longer under consideration by the NPS.



DEPARTMENT OF VETERANS AFFAIRS
Office of Construction & Facilities Management
WASHINGTON DC 20420

RECEIVED 2280

JAN 22 2016

Nat. Register of Historic Places
National Park Service

January 20, 2016

Paul Loether, Director
National Register of Historic Places
National Park Service
1201 Eye Street, NW
8th Floor
Washington, DC 20005

Dear Paul:

The Department of Veterans Affairs (VA) is pleased to submit the enclosed National Register of Historic Places nominations for Baltimore National Cemetery (Maryland), Fort Bliss National Cemetery (Texas), Fort Rosecrans National Cemetery (California), Fort Sam Houston National Cemetery (Texas), Fort Snelling National Cemetery (Minnesota), and Golden Gate National Cemetery (California) along with the multiple property cover, Inter-World War National Cemeteries, 1934-1939.

The enclosed disk contains the true and correct copy of the nominations for Baltimore, Fort Bliss, Fort Rosecrans, Fort Sam Houston, Fort Snelling, and Golden Gate national cemeteries as well as the true and correct copy of the cover narrative, Inter-World War National Cemeteries, 1934-1939, to the National Register of Historic Places.

If you have questions regarding these nominations, please feel free to contact me. I can be reached at 202-632-5529.

Sincerely,

A handwritten signature in cursive script that reads "Kathleen Schamel".

Kathleen Schamel
Federal Preservation Officer

Encl.