



85-A-129

Holden-Leonard Mill Complex
Bennington, Vermont
Credit: Thomas C. Bluto
Date: March 1985
Negative filed at Vermont Division
for Historic Preservation
Aerial view of mill complex; view
looking SW.
Photograph 1



84A-556

Holden-Leonard Mill Complex
Bennington, Vermont
Credit: Hugh H. Henry
Date: October 1984
Negative filed at Vermont Division
for Historic Preservation
Buildings #4,3,2-1 - S,E elevations;
view looking NW.
Photograph 2



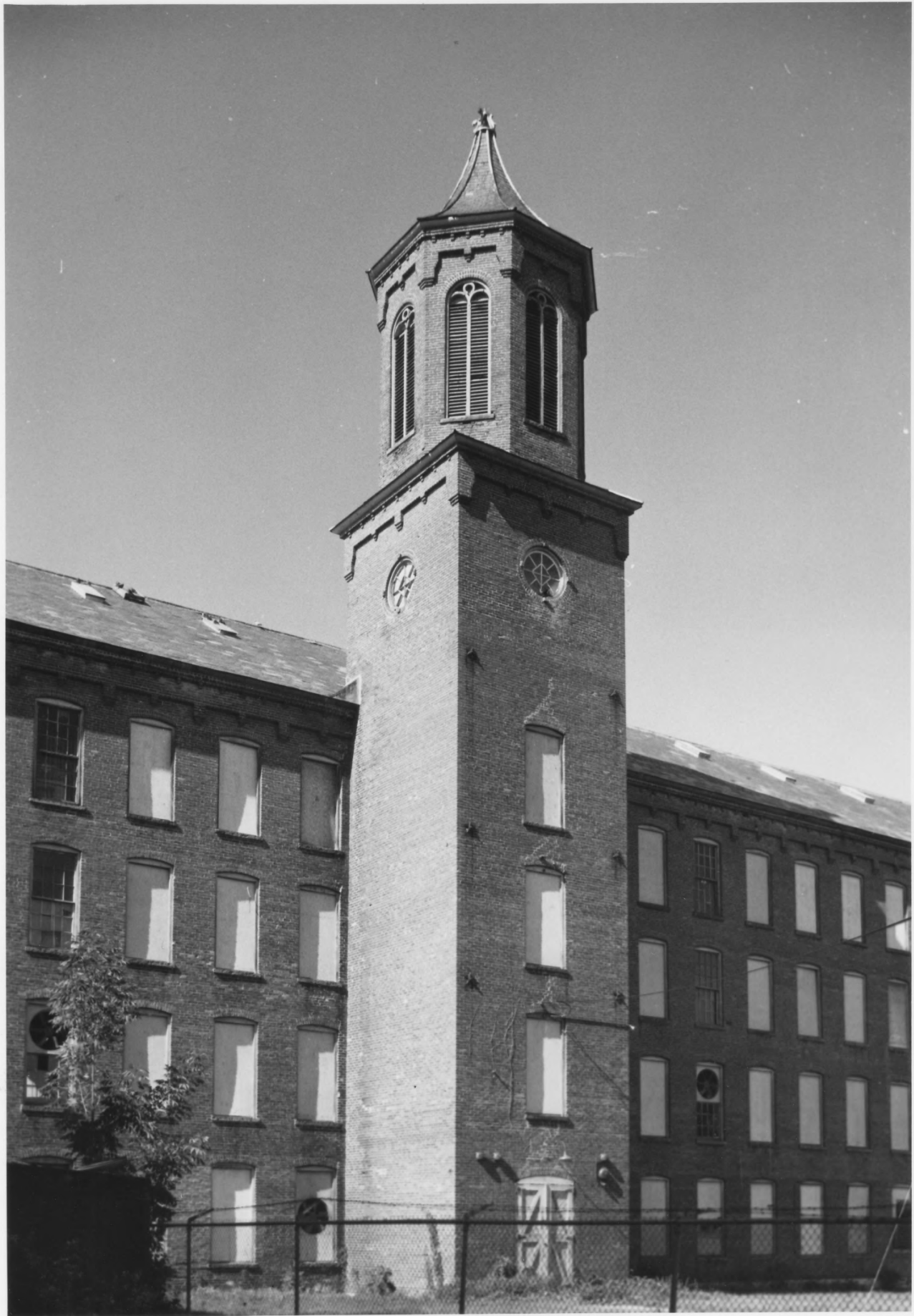
84 A-556

Holden-Leonard Mill Complex
Bennington, Vermont
Credit: Hugh H. Henry
Date: October 1984
Negative filed at Vermont Division
for Historic Preservation
Building #1-2 - E facade; view
looking NW.
Photograph 3



84-A-556

Holden-Leonard Mill Complex
Bennington, Vermont
Credit: Hugh H. Henry
Date: October 1984
Negative filed at Vermont Division
for Historic Preservation
"Big Mill," #5 - E facade; view
looking W.
Photograph 4



84 A-556

Holden-Leonard Mill Complex
Bennington, Vermont
Credit: Hugh H. Henry
Date: October 1984
Negative filed at Vermont Division
for Historic Preservation
"Big Mill," #5 - E tower (S,E faces);
view looking NW.
Photograph 5



84-A-556

Holden-Leonard Mill Complex
Bennington, Vermont
Credit: Hugh H. Henry
Date: October 1984
Negative filed at Vermont Division
for Historic Preservation
Buildings #11-12, 4S, 2S, 6, 10, 5 -
S elevations; view looking N.
Photograph 6



84-A-556

Holden-Leonard Mill Complex
Bennington, Vermont
Credit: Hugh H. Henry
Date: October 1984
Negative filed at Vermont Division
for Historic Preservation
Buildings #17,5,15,14,13,11-12 -
W,N elevations; view looking SE.
Photograph 7



84A-556

Holden-Leonard Mill Complex
Bennington, Vermont
Credit: Hugh H. Henry
Date: October 1984
Negative filed at Vermont Division
for Historic Preservation
Buildings #18,17 - W,S elevations;
view looking NE.
Photograph 8



84-A-556

Holden-Leonard Mill Complex
Bennington, Vermont
Credit: Hugh H. Henry
Date: October 1984
Negative filed at Vermont Division
for Historic Preservation
Buildings #19,5,18, Hydrant #5, #17, 15 -
N,W elevations; view looking SE.
Photograph 9



84A-556

Holden-Leonard Mill Complex
Bennington, Vermont
Credit: Hugh H. Henry
Date: October 1984
Negative filed at Vermont Division
for Historic Preservation
Building #19 - W,S elevations;
view looking NE.
Photograph 10



84-A-556

Holden-Leonard Mill Complex
Bennington, Vermont
Credit: Hugh H. Henry
Date: October 1984
Negative filed at Vermont Division
for Historic Preservation
Buildings #3,4,5,19,20 - N,W
elevations; view looking SE.
Photograph 11



84-A-556

Holden-Leonard Mill Complex
Bennington, Vermont
Credit: Hugh H. Henry
Date: October 1984
Negative filed at Vermont Division
for Historic Preservation
Buildings #21,20 - S,E elevations;
view looking NW.
Photograph 12



84-A-556

Holden-Leonard Mill Complex
Bennington, Vermont
Credit: Hugh H. Henry
Date: October 1984
Negative filed at Vermont Division
for Historic Preservation
Building #27 - E,N elevations;
view looking SW.
Photograph 13



84-A-556

Holden-Leonard Mill Complex
Bennington, Vermont
Credit: Hugh H. Henry
Date: October 1984
Negative filed at Vermont Division
for Historic Preservation
Buildings #31,27 - S,E elevations;
view looking NW.
Photograph 14



84-A-556

Holden-Leonard Mill Complex
Bennington, Vermont
Credit: Hugh H. Henry
Date: October 1984
Negative filed at Vermont Division
for Historic Preservation
Building #1B-1A, Hydrant #3 -
S,E elevations; view looking NW.
Photograph 15



84-A-556

Holden-Leonard Mill Complex
Bennington, Vermont
Credit: Hugh H. Henry
Date: October 1984
Negative filed at Vermont Division
for Historic Preservation
Hydrant house #5 - SE aspect;
view looking NW.
Photograph 16



Holden-Leonard Mill Complex
Bennington, Vermont

Credit: Weichert-Isselhardt
Collection

Date: c. 1890

Negative filed at Vermont Division
for Historic Preservation

"Big Mill," #5 - E facade; view
looking NW.

Photograph 17

867-67