

**EAST TEST AREA - MSFC, HUNTSVILLE**

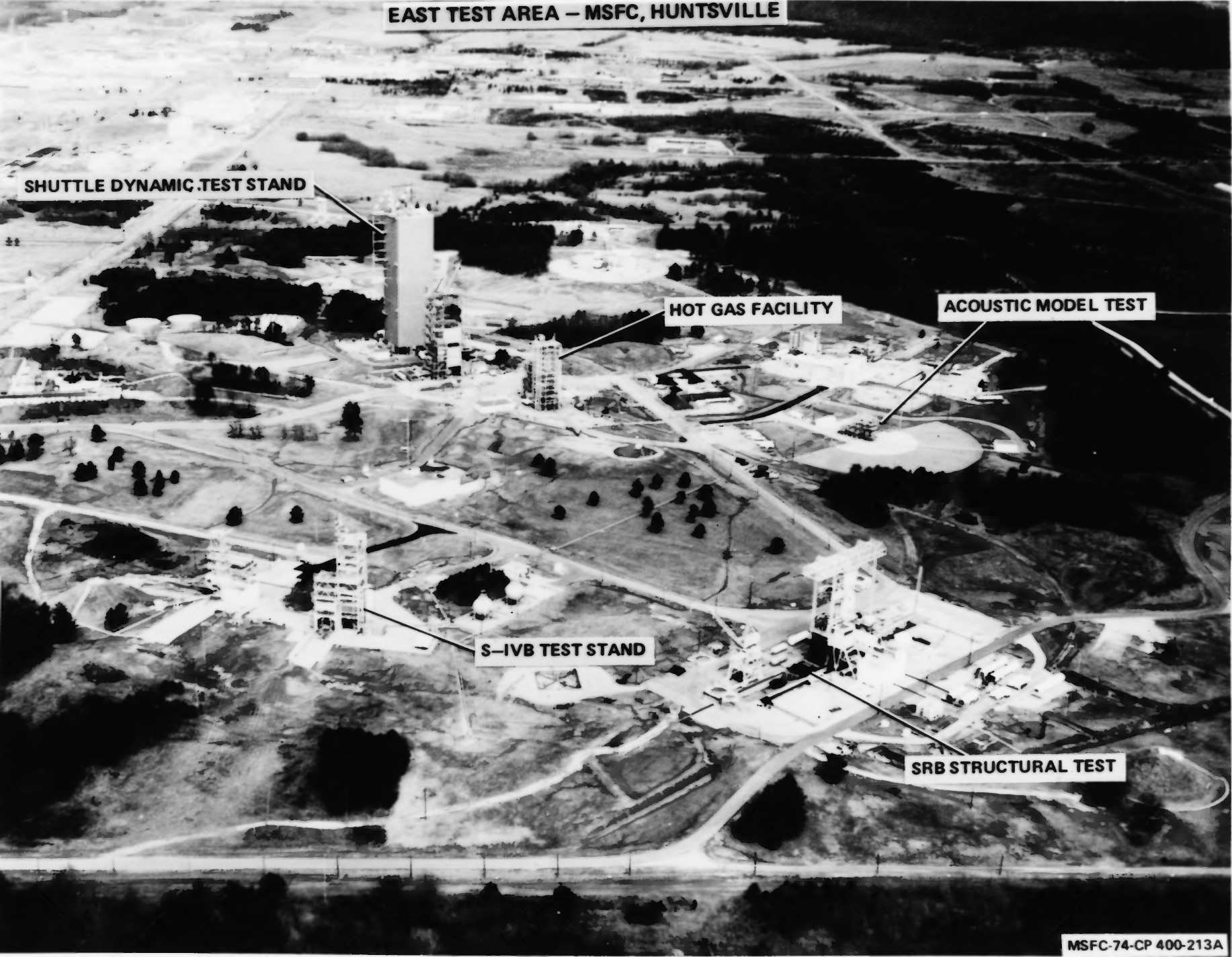
**SHUTTLE DYNAMIC TEST STAND**

**HOT GAS FACILITY**

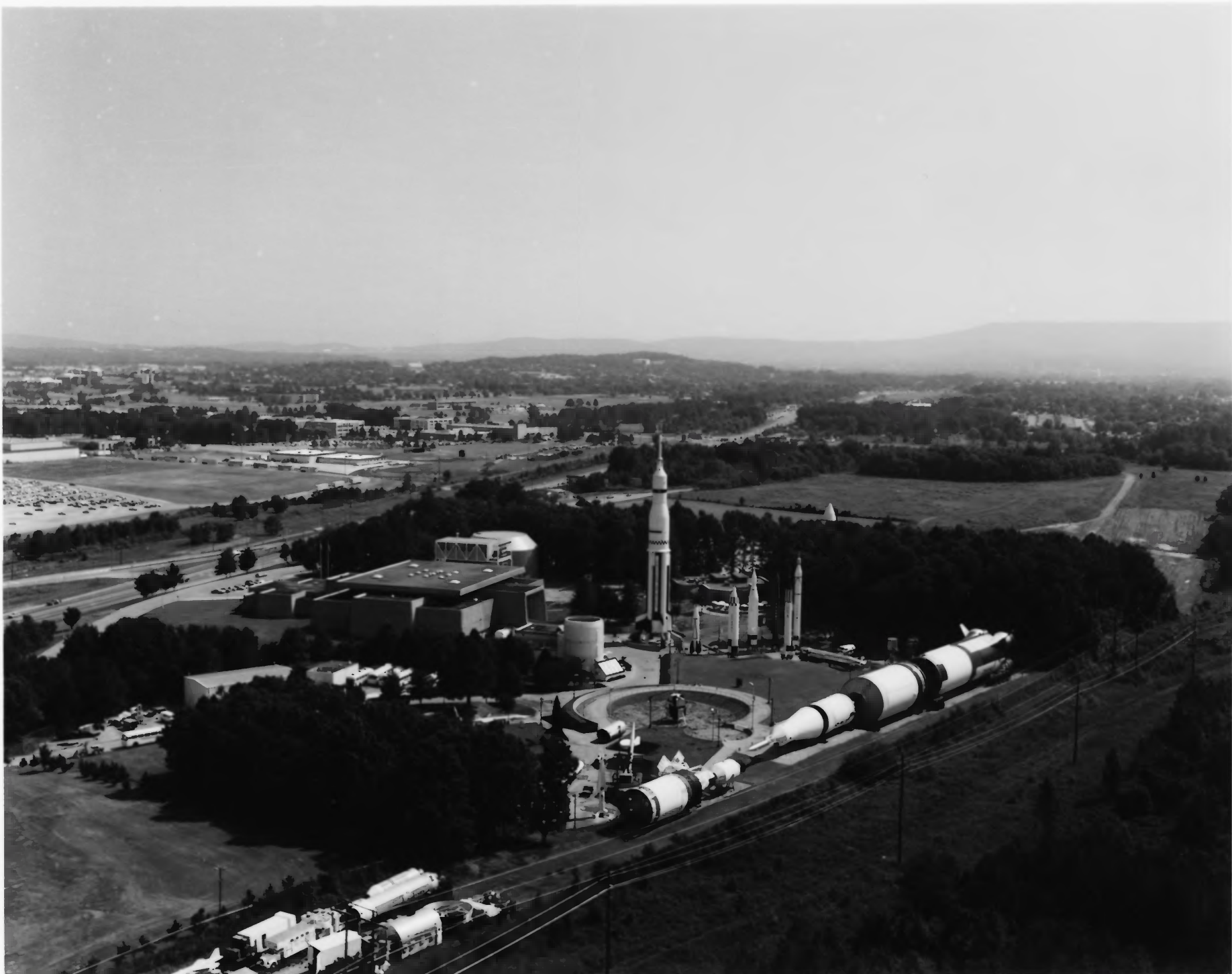
**ACOUSTIC MODEL TEST**

**S-IVB TEST STAND**

**SRB STRUCTURAL TEST**



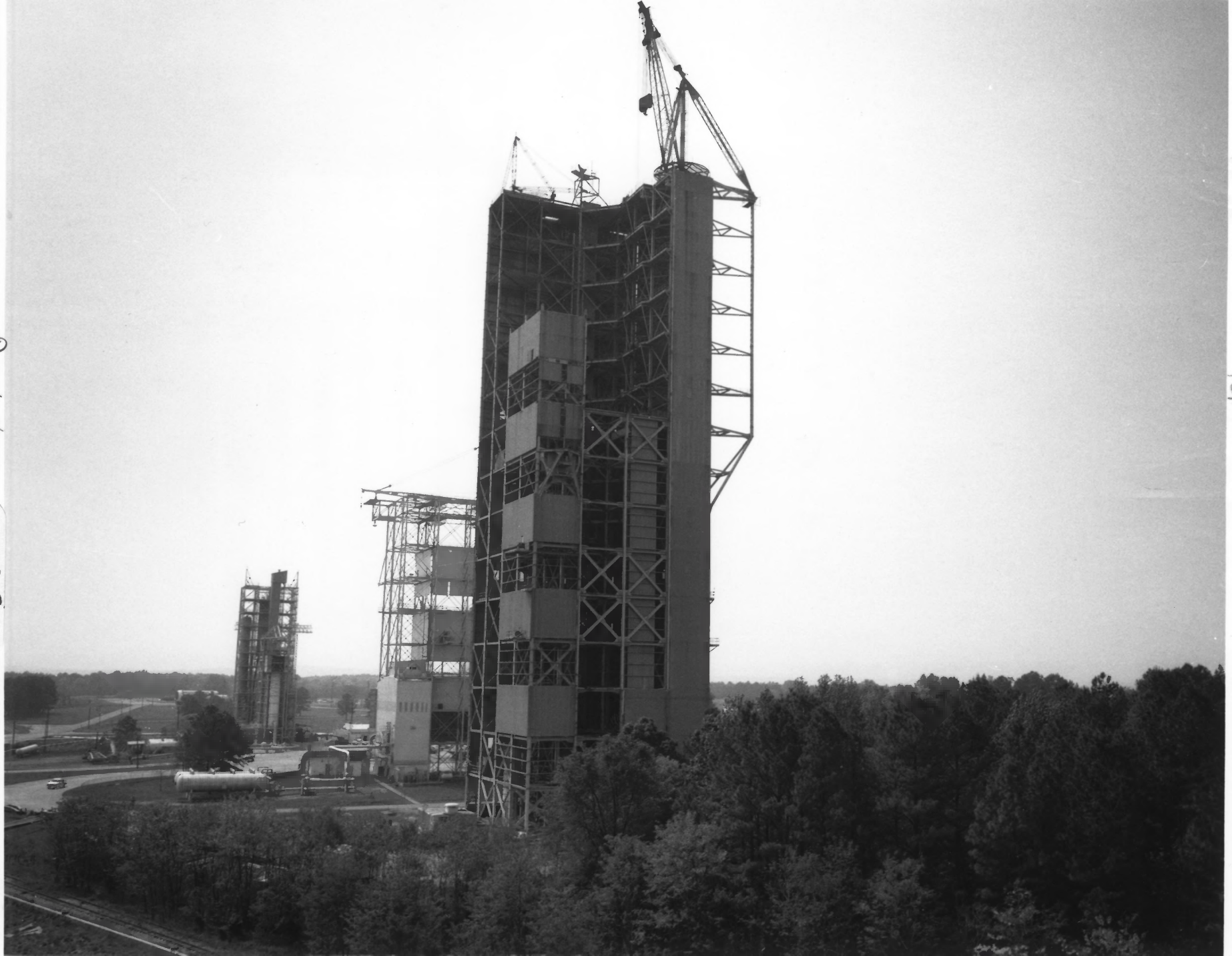
1. Saturn V Dynamic Test Stand
2. Huntsville, Alabama
3. NASA
4. 1974.
5. NASA, Marshall Space Flight Center Facilities Office
6. Aerial View of the East Test Area of the MSFC.  
Saturn V Dynamic Test Stand (Shuttle Dynamic Test Stand) is in the upper left hand corner.
7. 36



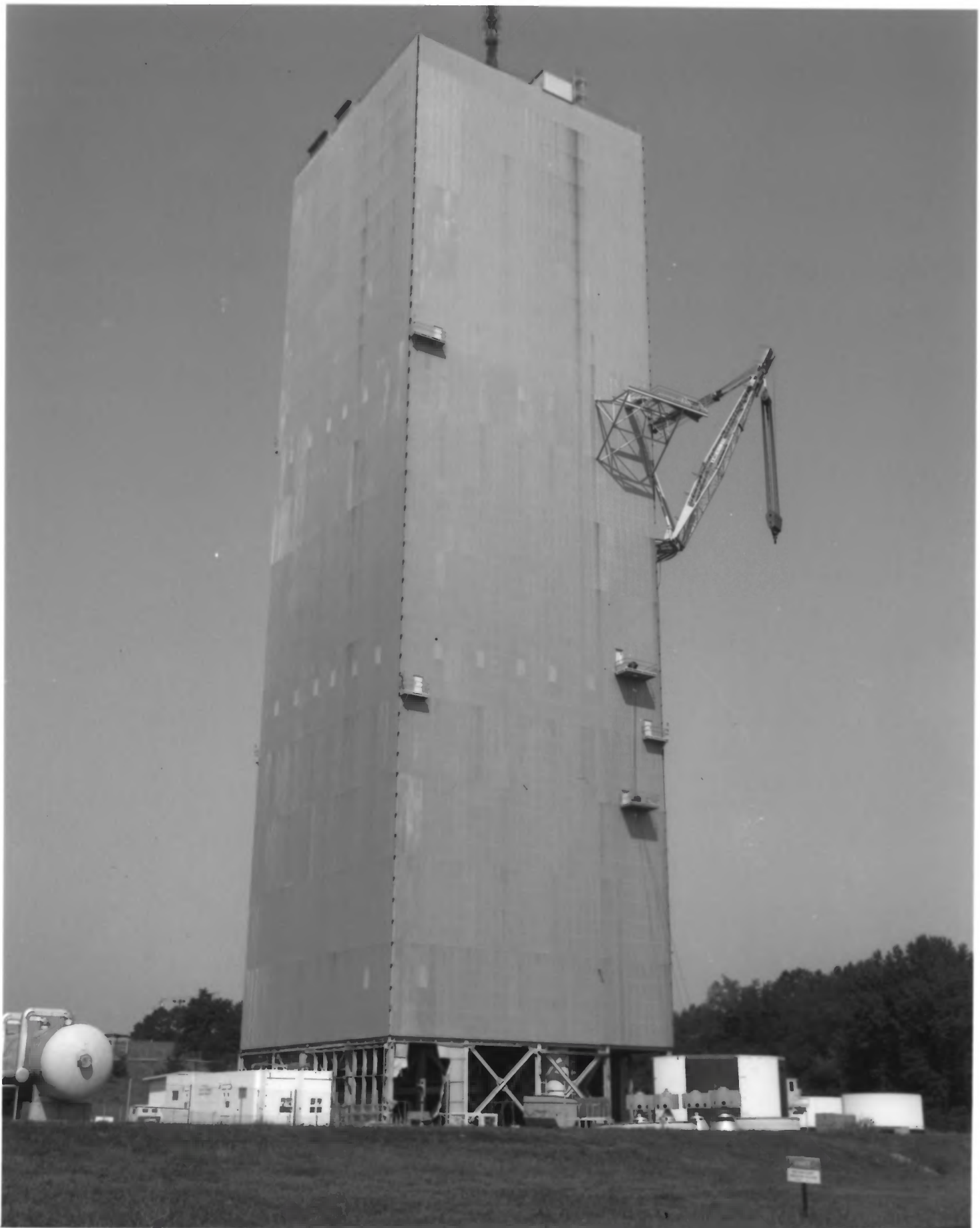
STILL CAPTION

| SERIAL            | CLASS | T                 | R | LAW OFF | MO/YR             | M | L |  |
|-------------------|-------|-------------------|---|---------|-------------------|---|---|--|
| 328895            | U     | B                 | A | AB      | 0982              |   |   |  |
|                   |       | ALABAMA SPACE AND |   |         |                   |   |   |  |
|                   |       | ROCKET CENTER     |   |         |                   |   |   |  |
|                   |       | LOOKING NORTHEAST |   |         |                   |   |   |  |
|                   |       |                   |   |         |                   |   |   |  |
|                   |       | NASA-MSFC         |   |         |                   |   |   |  |
|                   |       |                   |   |         |                   |   |   |  |
|                   |       |                   |   |         |                   |   |   |  |
|                   |       |                   |   |         |                   |   |   |  |
| SECTION <b>CI</b> |       |                   |   |         | DATE: <b>9/82</b> |   |   |  |





1. Saturn V Dynamic test Stand
2. Huntsville, Alabama
3. NASA
4. 1976.
5. NASA, Marshall Space Flight Center Facilities Office
6. Exterior view of Saturn V Dynamic Test Stand in process of being modified for Shuttle use.
7. 38



| STILL CAPTION             |  |       |               |               |             |         |  |  |    |
|---------------------------|--|-------|---------------|---------------|-------------|---------|--|--|----|
| 021666                    |  | U     | A             | A             | 12          | 0771    |  |  |    |
| NEGATIVE NO.              |  | CLASS | $\frac{1}{2}$ | $\frac{1}{2}$ | LAB/<br>OFF | MO/YR   |  |  | SL |
| DESCRIPTION               |  |       |               |               |             |         |  |  |    |
| Advanced Sat Dynamic Test |  |       |               |               |             |         |  |  |    |
| Fac. Stand #4550.         |  |       |               |               |             |         |  |  |    |
|                           |  |       |               |               |             |         |  |  |    |
|                           |  |       |               |               |             |         |  |  |    |
|                           |  |       |               |               |             |         |  |  |    |
|                           |  |       |               |               |             |         |  |  |    |
|                           |  |       |               |               |             |         |  |  |    |
|                           |  |       |               |               |             |         |  |  |    |
| PHOTOGRAPHER              |  |       |               |               |             | DATE:   |  |  |    |
| Thornton                  |  |       |               |               |             | 7-13-71 |  |  |    |

MSFC-Form 1362 (REV. May 1969)

\*MILITE CODE: ALWAYS "N"

BLOG 4550 DYNAMIC STRUCTURAL TEST FAC  
 PRIOR TO MODIFICATION FOR SHUTTLE USE.  
 LOOKING WEST.

NASA-MSFC





| STILL CAPTION                       |       |                      |                |                   |       |                 |     |
|-------------------------------------|-------|----------------------|----------------|-------------------|-------|-----------------|-----|
| NEGATIVE NO.                        | CLASS | Y <sub>1</sub>       | Z <sub>1</sub> | LAB/OFF           | MO/YR |                 | H/L |
| 442251                              | U     | B                    | Z              | AR                | 4/84  |                 |     |
|                                     |       | BLDG. 4550 WEST VIEW |                |                   |       |                 |     |
|                                     |       | DYNAMIC TEST STAND   |                |                   |       |                 |     |
|                                     |       |                      |                |                   |       |                 |     |
|                                     |       |                      |                |                   |       |                 |     |
|                                     |       |                      |                |                   |       |                 |     |
|                                     |       |                      |                |                   |       |                 |     |
|                                     |       |                      |                |                   |       |                 |     |
| PHOTOGRAPHER:<br>CORDER             |       |                      |                | JMC               |       | DATE:<br>4/6/84 |     |
| MSFC - Form 1383 (Rev. August 1970) |       |                      |                | * HASTE CODE * 01 |       |                 |     |

BLDG 4550 LOOKING NORTHWEST

NASA-MSFC



STILL CAPTION

|              |  |       |      |      |         |       |  |             |
|--------------|--|-------|------|------|---------|-------|--|-------------|
| NEGATIVE NO. |  | CLASS | Type | Size | LAB/OFF | MO/YR |  | H<br>L<br>• |
| 442252       |  | IT    | R    | 7    | AR      | 4/84  |  |             |

BLDG. 4550 DYNAMIC TEST

STAND SOUTH EAST VIEW

PHOTOGRAPHER:

CORDER

JMC

DATE:

4/6/84

MSFC - Form 1368 (Rev. August 1970)

• MILITE CODE "H"

BLDG 4550 LOOKING SOUTHEAST

NASA - MSFC





1. Saturn V Dynamic Test Stand
2. Huntsville, Alabama
3. NASA
4. 1980
5. NASA, Marshall Space Flight Facilities Office
6. External View showing Space Shuttle being hoisted into Test Stand.
7. 39



1. Saturn V Dynamic Test Stand
2. Huntsville, Alabama
3. NASA
4. 1977
5. NASA, Marshall Space Flight Center Facilities Office
6. Interior view of Test Stand
7. 40





1. Saturn V Dynamic Test Stand
2. Huntsville, Alabama
3. NASA
4. 1978
5. NASA, Marshall Space Flight Center Facilities Office
6. Interior view with Space Shuttle in place
7. 41