

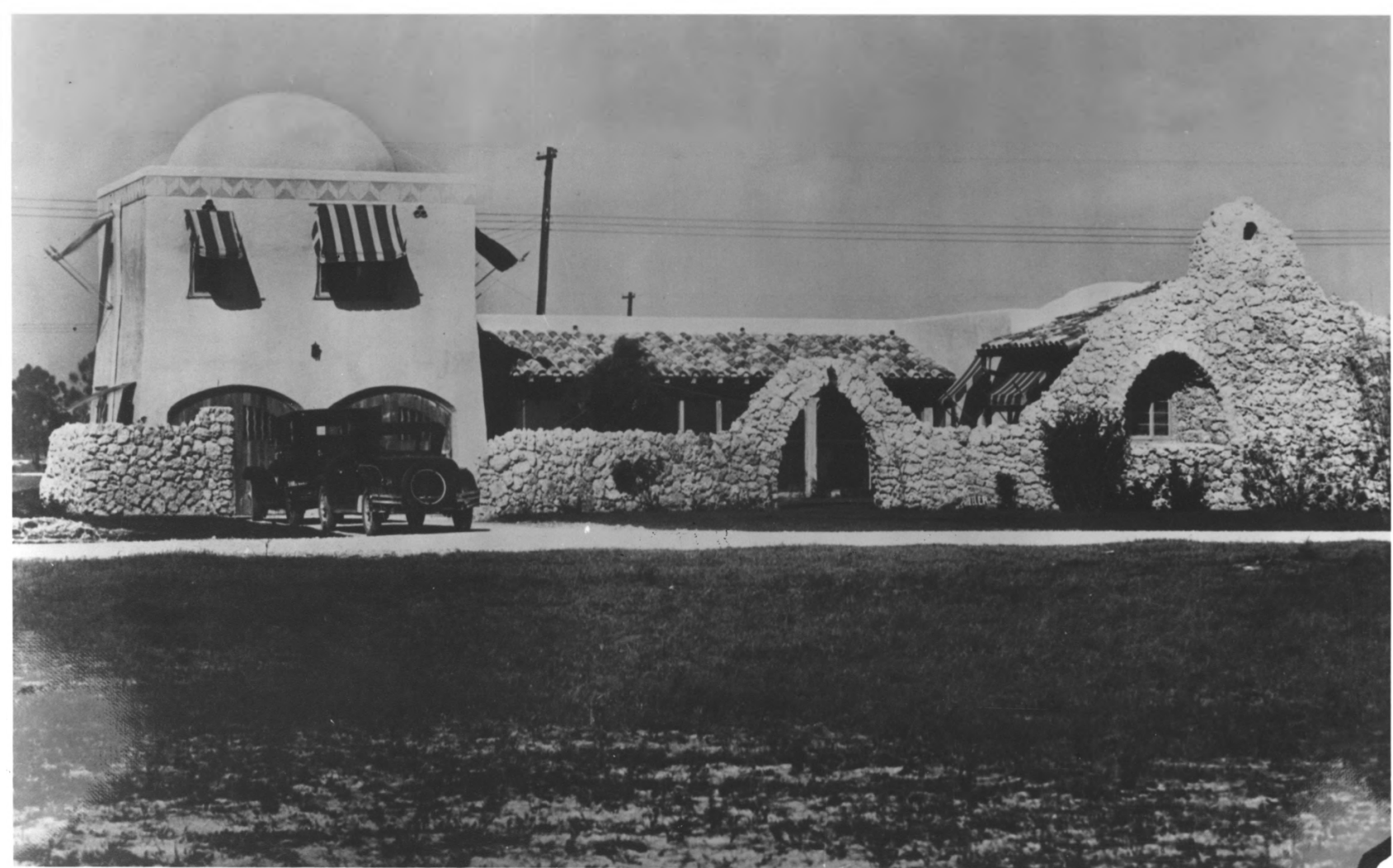
FLOOR PLAN

SCALE - 1/4" = 1'-0"

RESIDENCE No 4.
 FOR
 OPA-LOCKA
 FLORIDA

BERNHARDT E. MÜLLER
 ARCHITECT
 527 - 5th AVE. NEW YORK

1. Plans for Residence No. 4 for Opa-locka,
Florida
2. 1035 Dunad Avenue, Opa-locka, Fl
(Dade County)
3. B.E. Muller
4. circa 1926
5. B.E. Muller Collection, Richter Library,
Univ. of Miami, Miami, Fl
6. Front facade and floor plan
7. Photo no. 1 of 3



1035 DUNAD

1. H. Sayre Wheeler House
2. 1035 Dunad Avenue, Opa-locka, Fl
(Dade County)
3. unknown
4. circa 1926
5. B.E. Muller Collection, Richter Library,
Univ. of Miami, Miami, Fl
6. southeast view
7. Photo no. 2 of 3



1035 DUNAD

1. H. Sayre Wheeler House
2. 1035 Dunad Avenue, Opa-locka, Fl
(Dade County)
3. Michael Maxwell
4. 1986
5. B.E. Muller Collection, Richter Library,
Univ. of Miami, Miami, Fl
6. front facade (east)
7. Photo no. 3 of 3